

TOYOTA

*LEXCEN*





GET THE  
*style*  
 IN A  
 BIG WAY

Here for the first time is a big car with the Toyota feeling.

The Lexcen V6.

Lexcen is a very special Toyota, a big Australian-designed car that is named after a very special Australian designer, Ben Lexcen.

Ben Lexcen was a genius and he was a winner.

He believed that good enough was

never enough. He was an individual, an Australian classic.

The Toyota V6 Lexcen is an Australian classic in five models: Lexcen, Lexcen GL, Lexcen GLX sedans, Lexcen Wagon and Lexcen GL Wagon.

Decide on any of these superb sedans or beautiful practical wagons, and add your choice of options and extras, so that it is your style.

Lexcen is styled for the Australian individual.

The first impression is its smooth, aerodynamic style, its flowing lines, its flush-fitting glass.

From its small profile grille to its handsome high bootline, the Lexcen goes through air like a winged keel through water: fast.

The details have style, too.

From its cockpit layout to its smart badges, this is a designer's car. Open the doors and it's the biggest Toyota passenger car ever. Big enough for comfortable cruising with five adults.

Open the bonnet and see a 3.8 litre no-nonsense V6 engine with a lot more power than many V8's, driving a 4-speed

automatic transmission with fuel-saving overdrive.

Open the boot and see the great Australian outback.

Underneath is a high performance suspension and four-wheel disc brakes to match the power up top.

Lexcen is the big Australian style, all over.







Near enough is not good enough; the Lexcen has luxury features throughout.

Cut pile carpet from front to back, tasteful fabrics, one-piece headlining, and beautifully detailed upholstery with matching trim, give the Lexcen an unbeatable finish.

The controls say luxury, too. Behind the beautifully comfortable

GET THE  
*Luxury*  
 IN A  
 BIG WAY

wheel is a handsome moulded binnacle of cockpit instruments, with fingertip switches on either side for just about everything. The T-bar automatic is marked 1-2-D-N-R-P.

This superbly smooth 4-speed transmission incorporates close-ratio changes and petrol-saving overdrive.

All-round air-conditioning with vents for front-seat and back-seat

passengers is standard equipment on the GL and GLX.

All-round sound is also standard equipment on the GL and GLX: the AM/FM radio/cassette system has four speakers and an input for your CD player.

The front seats are generously contoured, and they adjust forward-back, and up-down, with reclining and

lumbar support in the GL and GLX.

The back seats are divided into two by a central armrest and fold-down tray, folding this up makes comfortable space for three big adults. And the Lexcen makes life easier for you even when you are outside the car.

When you've finished enjoying its luxury and performance, simply

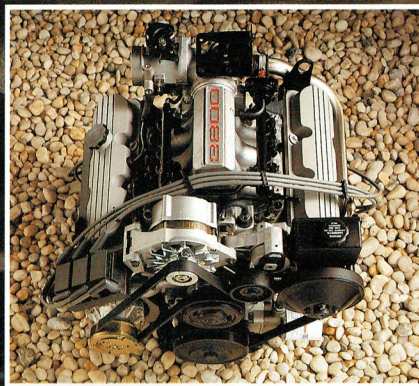
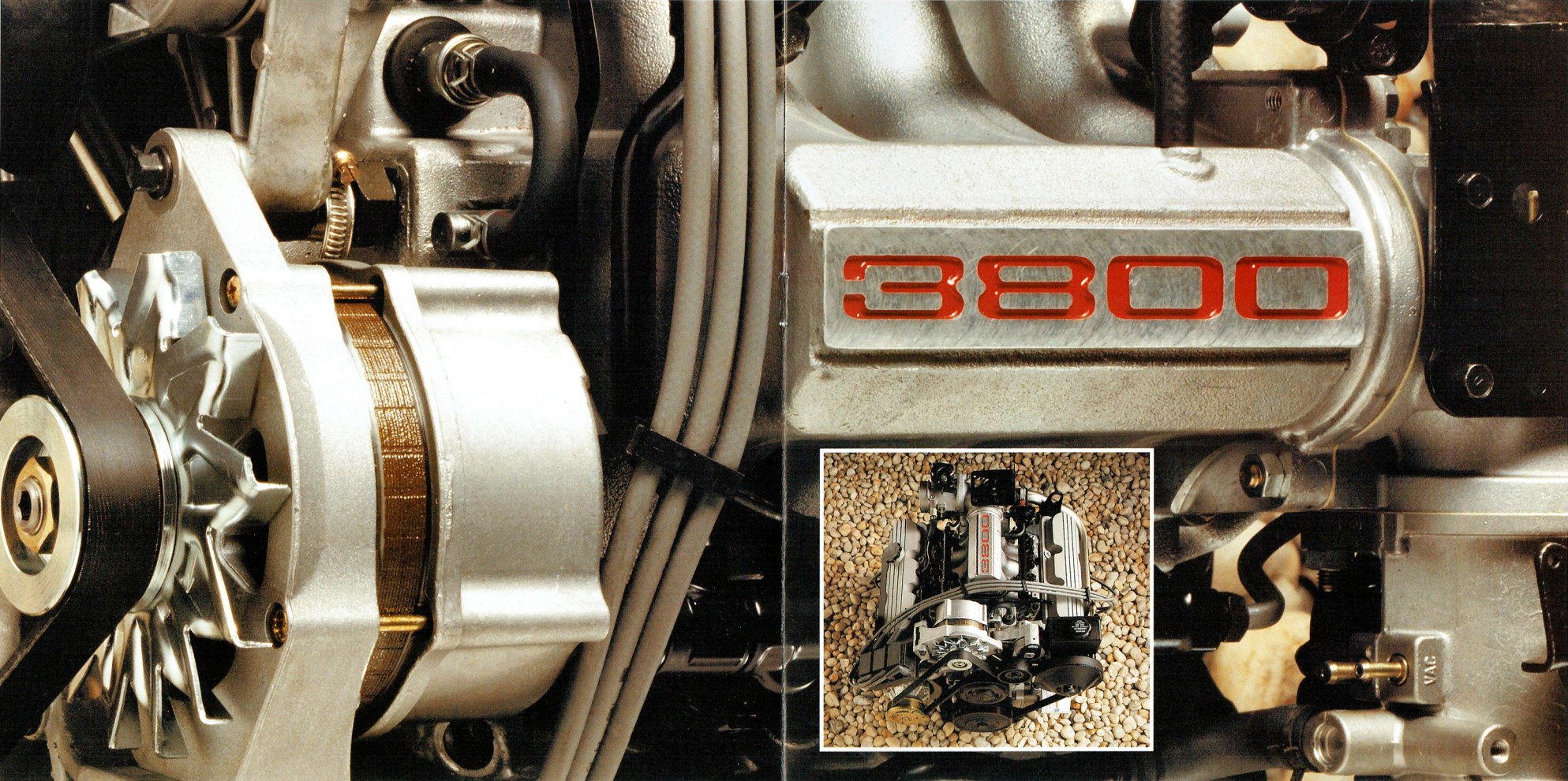
slip the double profile key into the driver's door. Give it an extra twist, and all doors are electronically locked\*! But that's not all.

Because as well as these generous fittings and superior features, the Lexcen has in abundance that other hallmark of all Toyota vehicles.

Scintillating performance.

\*Standard on GL and GLX models.





With its big, fuel-injected 3.8 litre V6 engine, Lexcen accelerates from 0 to 100 km/h in just 8.8\* seconds.

That's fast for a family saloon.

It's big on torque, too; it'll tow anything up to 1.5 tonnes.

Yet this high performance comes with outstanding fuel economy: city cycle 12.5 litre/100 km and a highway cycle of 8.0 litre/100 km.<sup>†</sup>

A V6 is much smoother than a 4, yet it's lighter and shorter than a V8, so the weight is further back toward the centre of the car, which improves handling.

If you like driving, you'll notice a big difference between the Lexcen and other cars.

\* Under factory test conditions. Based on automatic V6 base sedan.

† Dependent on State regulations. † Refer to ASA Standard 2887.

# GET THE *power* IN A BIG WAY

Here are some of the other big advantages.

Low friction technology.

Low-friction pistons, automatically adjusting hydraulic roller valve lifters, reduce friction and wear: the balance shaft reduces vibration.

Electronic engine management.

A computer controls ignition, idling speed, cooling, and fuel injection, thus

increasing engine efficiency by cutting down fuel in deceleration and overdrive.

Overdrive (fourth gear) is a direct mechanical drive through the automatic transmission, which "locks up" the torque converter, to save you more power.

Multipoint fuel injection system eliminates cold-start and warming-up problems, its new technology

injectors improve combustion... this all saves fuel.



Three ignition coils fire two plugs each, and the spark is timed by a magnetic pulse from the crankshaft. There is no distributor to get out of tune.

The big, fuel-efficient 3.8 litre V6 is just the right sort of engine for a big country.





The Lexcen is the most spacious Toyota family car ever sold in Australia. It's longer, wider and more comfortable than most Australian-built sedans.

Its long wheel base of 2731 mm (2822 on the wagon) gives simply, more car.

The V6 engine takes up less space than a V8, so the result is much more

room inside. And the Lexcen offers you plenty of that.

Its big generous seats hold five adults in comfort, with leg-room, head-room and shoulder-room to spare.

And there's big storage room too. The driver's centre console has three separate compartments to keep everything tidy, and full length bins in the front doors to handle maps, directories,

and just about everything for the kids.

The illuminated glovebox has a lock.

There is a hatch in the back seat for easy access to the cavernous 443 litre boot.

More space than most wagons.

With the back seat folded down, the fully carpeted load space in the Lexcen Wagon is 2113 mm long and at least 1520 mm wide. That's big.

GET THE  
*space*  
IN A  
BIG WAY

More style than most wagons.

The Wagon's aerodynamic styling is smooth all round. Not only does it look good, it also increases the performance at cruising speeds, and lowers petrol consumption.

More seats than most wagons.

Your Toyota dealer can fit a forward facing seat which can be mounted in the cargo space to safely

accommodate two children up to the age of eight. It folds away vertically.

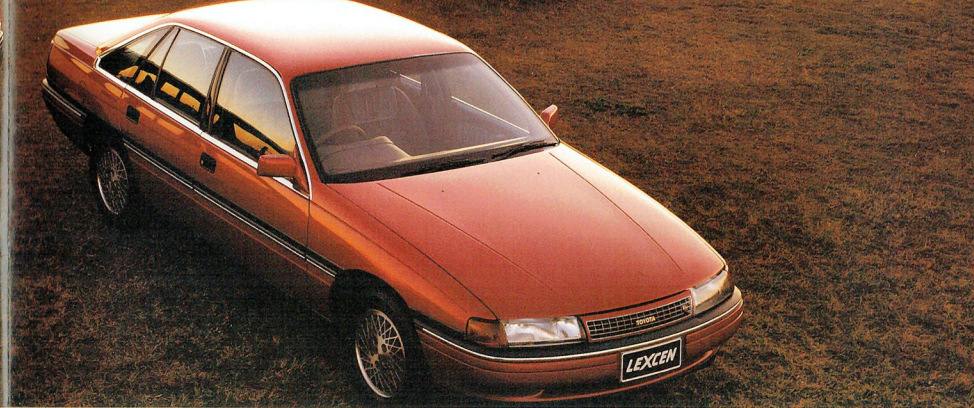
More options than most wagons.

Lexcen Wagons can be ordered with built-in roof racks, and big 68 litre fuel tank.

Ben Lexcen was a great designer. And a man who re-shaped the rules.

That's exactly what this car has done for Australian motoring.





The Toyota V6 Lexcen is an Australian classic in five models: Lexcen, Lexcen GL, Lexcen GLX sedans, Lexcen Wagon and Lexcen GL Wagon.

Toyota Lexcen.

A high performance five-seater, four-door sedan. New technology 3.8 litre V6 engine. 4-speed automatic transmission with overdrive. Power-assisted rack and pinion steering.

MacPherson strut front suspension, coil springs. Trailing arm rear suspension with 5-link location, Panhard rod. Four wheel disc brakes.

Fully adjustable and reclining front seats. Rear seat accommodates three adults. Rear seat retractable centre armrest for added comfort. Fabric upholstery with matching vinyl interior finish. Full length storage

bins built into the front doors.

Toyota Lexcen GL.

A "greater luxury" version of the Lexcen design, including: Big power air-conditioning with vents for front and rear passengers. Big all-round, four speaker sound system with AM/FM radio/cassette player and plug for your CD. Power antenna.

Lumbar support adjustment on

front seats. Central power locking system, all doors. Power windows. Fully fitted, cut pile carpet.

Toyota Lexcen GLX.

A top-of-line luxury saloon with everything the GL has, plus front and rear bumpers finished in body colour and chrome. Front grille in body colour and chrome. Alloy road wheels. Chrome style strip around the windows.

Cruise control for highway speeds. Exterior mirrors in body colour.

Toyota Lexcen Wagon.

All the features of the Lexcen 5-seater sedan on a 91 mm longer wheelbase. Enormous load compartment when back seat is folded forward.

Toyota Lexcen GL Wagon.

All the features of the GL Sedan incorporated in the Wagon design.

GET THE  
*choice*  
IN A  
BIG WAY



# TOYOTA

## LEXCEN

Owning a Toyota has always been a good feeling. Toyota has a long history of reliability on the toughest tracks of this continent. And the Lexcen V6 is no exception.

It's been tested over one-and-a-half million kilometres, from icy starts in the Australian alps, to long days of 40°C in the dust of the outback.

The Lexcen is backed by the Toyota

reputation, by the Toyota 12 months or 20,000 kilometre warranty, by hundreds of Toyota service agents all over Australia, and by factory parts depots in every State capital.

Driving a Lexcen is an even better feeling.

The Lexcen matches exhilarating performance with the wide track of a big car, giving stability at speed, a high

'roll stiffness', and flatter cornering with superbly responsive steering.

Four big disc brakes can handle high speed and heavy loads with ease.

*Keep the feeling!*  
**TOYOTA**  
Genuine parts • Quality service

It's a smarter transmission.

While the first three speeds are quite traditional and use the torque converter to smooth the power, the top speed, overdrive, is different. In overdrive the computer 'locks up' the torque converter into a direct mechanical link, to save power and fuel.

Oh what a big feeling!

The Lexcen is styled for the

Australian individual, with big car comfort and handling.

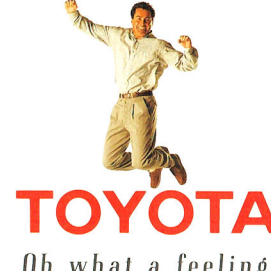
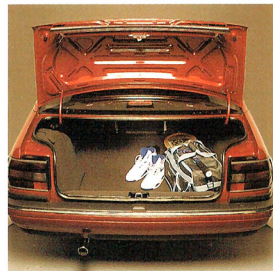
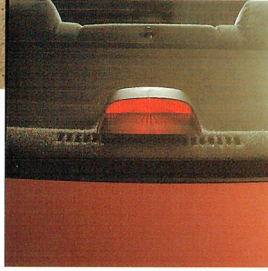
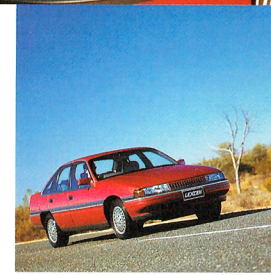
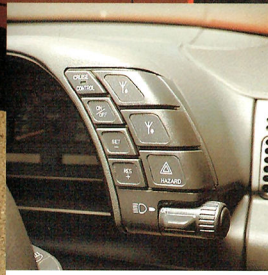
The V6 gives big power, great acceleration, deep down torque for steep climbs, lower revs through overdrive for long roads.

It's more sensible power. More responsive, more useful, more economical. And best of all, it's available from your Toyota dealer.

GET THE  
*feeling*  
IN A  
BIG WAY

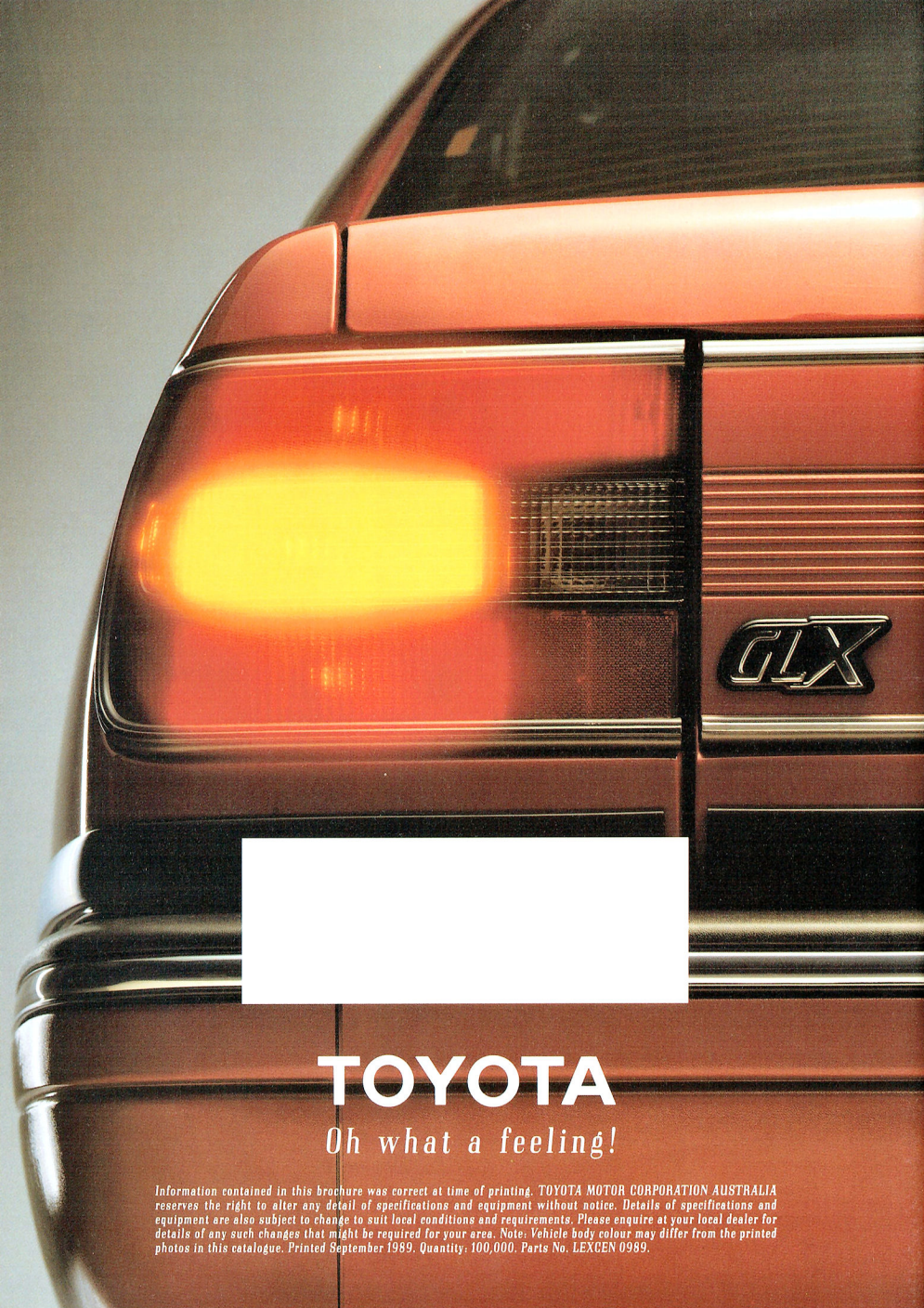


GET THE  
*features*  
IN A  
BIG WAY



**TOYOTA**  
Oh what a feeling!





# TOYOTA

*Oh what a feeling!*

Information contained in this brochure was correct at time of printing. TOYOTA MOTOR CORPORATION AUSTRALIA reserves the right to alter any detail of specifications and equipment without notice. Details of specifications and equipment are also subject to change to suit local conditions and requirements. Please enquire at your local dealer for details of any such changes that might be required for your area. Note: Vehicle body colour may differ from the printed photos in this catalogue. Printed September 1989. Quantity: 100,000. Parts No. LEXCEN 0989.



# TOYOTA LEXCEN V6

## SPECIFICATIONS AND FEATURES.

● = Standard Feature ★ = Factory Option A = Accessory fitted by Dealer

	LEXCEN SEDAN	LEXCEN WAGON	LEXCEN GL SEDAN	LEXCEN GL WAGON	LEXCEN GLX SEDAN
<b>POWERTRAIN</b>					
3.8 litre V6 engine	●	●	●	●	●
Multi-point fuel injection	●	●	●	●	●
Engine management system	●	●	●	●	●
4-speed auto, with overdrive and fuel saving torque converter clutch	●	●	●	●	●
Limited slip differential	★	★	★	★	★
<b>MECHANICAL</b>					
Rack and pinion steering, variable ratio	●	●	●	●	●
Four-wheel power disc brakes	●	●	●	●	●
<b>WHEELS, TYRES</b>					
6JJx14 steel wheels P185/75 HR14 radials	●	●	●	●	
Full wheel covers	●	●	●	●	
6JJx15 alloy wheels					●
P205/65 HR15 low profile tyres (mandatory with 15" wheels)					●
<b>EXTERIOR</b>					
Flush cabin glass	●	●	●	●	●
Six side windows	●	●	●	●	●
Tinted side and rear windows	●	●	●	●	●
Bumper in body colour			●	●	●
Grille in high gloss silver/grey			●	●	
Grille in "MX" grey	●	●			
Grille in body colour & chrome					●
Bodyside mouldings	●	●			
- wide bodyside mouldings			●	●	●
End gate moulding		A		A	
Metallic paintwork	★	★	●	●	●
Chromed exhaust extension	A	A	A	A	●
Smoked tail lamp lenses			●	●	●
<b>CONTROLS, INSTRUMENTS</b>					
Two-spoke steering wheel	●	●	●	●	
Four-spoke steering wheel					●
Remote electric boot release	●		●		●
Remote fuel door release	●	●	●	●	●
Electric remote exterior mirrors	●	●	●	●	●



	BASE SEDAN	BASE WAGON	GL SEDAN	GL WAGON	GLX SEDAN
<b>CONTROLS, INSTRUMENTS cont.</b>					
Multifocal dual pocket quartz halogen headlamps	●	●	●	●	●
Speedometer/odometer/trip meter	●	●	●	●	●
Tachometer	●	●	●	●	●
Temperature gauge	●	●	●	●	●
Fuel gauge	●	●	●	●	●
Warning lights include – brake failure	●	●	●	●	●
– alternator	●	●	●	●	●
– parking brake	●	●	●	●	●
– optional cruise control on			★	★	●
<b>SOUND SYSTEM</b>					
AM/FM stereo electronic tune radio/cassette	●	●	●	●	●
– AM stereo reception			●	●	●
Local/distant search button	●	●	●	●	●
Compact disc input socket			●	●	●
Auto reverse tape deck	●	●	●	●	●
Dynamic noise reduction			●	●	●
Loudness contour circuit			●	●	●
Speakers, twin, 7.5 watt output each	●	●			
– Four, 7.5 watt output each			●	●	●
– Front/rear fader control			●	●	●
Separate bass and treble controls			●	●	●
Power antenna			●	●	●
<b>SEATING</b>					
Driver's seat height adjuster	●	●	●	●	●
Driver's seat lumbar support			●	●	●
Front seat headrest with height adjuster	●	●	●	●	●
Centre console armrest	●	●	●	●	●
Retracting seat belts – front and rear	●	●	●	●	●
Seat trim in woven cloth	●	●			
Seat trim in velour cloth			●	●	●
Rear seat centre armrest			●	●	●
<b>CHILDREN</b>					
Child-proof rear door locks	●	●	●	●	●
Child seat anchor points	●	●	●	●	●
<b>CABIN COMFORT</b>					
Driver's footrest	●	●	●	●	●
10 outlet, 4-speed heating/vent system	●	●	●	●	●
Air-conditioning	★/A	★/A	●	●	●
Rear outlet vents (fitted only with standard or optional factory air-conditioning)	★	★	●	●	●
Power windows with "express" function for driver's window (in power pack)			★	★	●
Power door locks, with deadlatch, all doors (in power pack)			●	●	●
Illuminated cigarette lighter/ashtray	●	●	●	●	●



	<b>BASE SEDAN</b>	<b>BASE WAGON</b>	<b>GL SEDAN</b>	<b>GL WAGON</b>	<b>GLX SEDAN</b>
<b>CABIN COMFORT cont.</b>					
Passenger vanity mirror on sunvisor	A	A	●	●	●
Centre dome light activated by all doors with automatic time delay (in power pack)					●
Front reading spotlamps			●	●	●
Loop pile carpet	●	●			
Cut pile carpet			●	●	●
Carpet floor mats	A	A	A	A	A
Moulded door trim with padded cloth insert	●	●	●	●	●
Integrated armrests and grab handles on front and rear doors	●	●	●	●	●
Sheepskin seat covers – Front	A	A	A	A	A
Passenger overhead assist handles	●	●	●	●	●
Carpet on lower doors			●	●	●
Moulded headlining – cloth finish	●	●	●	●	●
Tinted upper band, flush-bonded, laminated windscreen	●	●	●	●	●
Windscreen sunshade front	A	A	A	A	A
Sunshade rear	A		A		A
Weathershield, driver and front passenger windows	A	A	A	A	A
Rear louvre	A		A		A
Tinted side and rear windows	●	●	●	●	●
Venetian shades, rear window	A	A	A	A	A
Venetian shades, side window	A	A	A	A	A
Tailgate dust deflector		A		A	
<b>STORAGE, CARGO, TOWING</b>					
Front door storage bins	●	●	●	●	●
Centre console with armrest, 3 compartments	●	●	●	●	●
Illuminated locking glovebox	●	●	●	●	●
Storage pocket in rear of front seats			●	●	●
Rear seat centre access to boot	●		●		●
Carpeted boot floor	●		●		●
– spare wheel cover	●		●		●
Boot lamp	●		●		●
Carpeted rear seatback				●	
Carpeted cargo floor		●		●	
Cargo cover		A		A	
Cargo area lamp		●		●	
Roof luggage rack		A		●	
Towing equipment (towbar, tongue, ball, wiring harness, superlift shock absorbers)	A	A	A	A	A
<b>PROTECTION</b>					
Double-sided profile-cut key	●	●	●	●	●
Security shields on door locks	●	●	●	●	●
Radio/cassette unit security mounting	●	●	●	●	●
Centre mount stop lamp	●	●	●	●	●
Headlamp/hood guards	A	A	A	A	A



<b>PROTECTION cont.</b>	<b>BASE SEDAN</b>	<b>BASE WAGON</b>	<b>GL SEDAN</b>	<b>GL WAGON</b>	<b>GLX SEDAN</b>
Radiator insect screen	A	A	A	A	A
Mudflaps/splash guards	A	A	A	A	A
Comprehensive corrosion protection	●	●	●	●	●
Number plate frames	A	A	A	A	A
<b>Dimensions (mm):</b> — Length	4850	4896	4850	4896	4850
— Width	1800	1800	1806	1806	1806
— Height	1403	1422	1403	1422	1403
— Ground clearance	143	141	142	139	150
Kerb Weights (kg):	1333	1380	1378	1428	1395
Wheelbase (mm):	2731	2822	2231	2822	2731
Track: Front/Rear (mm):	1451/1478		1451/1478		1453/1480
Engine:	Six cylinders in V configuration. OHV design with cross-flow cylinder heads. Low friction technology. Multi-point fuel injection. High energy, distributorless, ignition fired by magnetic pulse from crankshaft, via computer. Triple coils. Engine management system. Electric cooling fan.				
Bore/Stroke (mm):	97 x 86				
Displacement (cm <sup>3</sup> ):	3791				
Compression Ratio:	8:5:1				
Power Output (kW):	125 (DIN) @ 4800rpm				
Torque (Nm):	292 (DIN) @ 3200rpm				
Transmission:	Auto: 4-speed overdrive with fuel saving torque converter clutch.				
Ratios:	1st 3.06:1    2nd 1.63:1    3rd 1.00:1    4th 0.70:1				
Drive:	Rear, through hypoid differential. Ratio 3.08:1				
Fuel Economy* (litres/100km):	City cycle: 12.5 (23mpg). Highway cycle: 8.0 (35mpg)				
Brakes:	Power assisted, dual circuit. Four wheel discs. Front ventilated.				
Wheels and Tyres:	6.00JJ x 14, Steel with P185/75 HR14 radials				
Turning Circle (m):	10.4 kerb to kerb.				
Steering:	Variable ratio rack and pinion. Power assisted with variable assist.				
Front:	MacPherson Strut, incorporating wet sleeve shock absorbers. Stabiliser bar. Coil springs.				
Rear:	Trailing arm with 5-link location. Panhard rod. Progressive rate coil springs. Double-acting shock absorbers. Stabiliser bar.				
Fuel Tank Capacity (litres):	Sedan: 63. Wagon: 68.				
Luggage Capacity (litres):	Sedan: 443. Wagon: 2491 (rear seat folded down).				
Towing Capacity (kg):	Sedan: 500kg with standard towbar. 1200kg with load equalising trailer hitch and towbar package. 1590kg with bodyside bracing package, trailer brakes, heavy-duty towbar and equaliser hitch. Wagon: 500kg with standard towbar. 1200kg with load equalising trailer hitch and towbar package. 1590kg with trailer brakes, heavy-duty towbar and equaliser hitch.				

Information contained in this brochure was correct at time of printing. TOYOTA MOTOR CORPORATION AUSTRALIA reserves the right to alter any detail of specifications and equipment without notice. Details of specifications and equipment are also subject to change to suit local conditions and requirements. Please enquire at your local dealer for details of any such changes that might be required for your area. Note: Vehicle body colour may differ from the printed photos in this catalogue. Printed August 1989. Quantity: 100,000. \*Ref. to ASA Standard 2087.