

THE NEW JEEP® CHEROKEE



THE
NEXT

GREAT JEEP. IDEA.

The signature grille and round headlights declare its legendary roots — Willys MB, Jeep CJ and Jeep Wrangler. This 60 year heritage of 4x4 leadership is the driving force behind the designers and engineers who developed the new Jeep Cherokee — The Next Great Jeep Idea.



Added to the strength of the tried and true Wrangler, and the prowess of Grand Cherokee, the most capable Jeep vehicle ever, Jeep Cherokee infuses the brand with a unique new energy — one that offers drivers a whole new world of possibilities. On-road. Off-road. Any road.



4

GENESIS



6

OFF-ROAD
READINESS



8

ON-ROAD
PERFORMANCE



10

SAFETY



12

VERSATILITY



14

SPORT
SPECIFICATIONS



16

LIMITED
SPECIFICATIONS



FROM SKETCHES
TO **STEEL.**

These elements helped sculpt its design: wind, rain, mud, snow, granite, dirt. Even pavement. These features — an all-new suspension system, 3.7 litre V6 Petrol and 2.5 litre Turbo Diesel engines, unique rear swing-gate and flipper glass — will infuse a legendary brand with remarkable new energy. These sketches became steel. This concept — reality.

To capture the heritage of the original Willys MB, round headlights were the starting point of the new Jeep Cherokee design process. The headlight forms, flanking the signature vertical slats of the grille and slightly exposed above the hood, extend into the hood surface. Below them, a muscular front fascia leads right into wide wheel flares — bringing capability, strength and power to the design. A high roofline ends at the external gate-mounted spare tyre. Inside, all-new surroundings harmonise with the exterior theme. From the circular door handles and round air outlets to the well-tailored, supportive front seats, Cherokee's spacious, comfortable interior is a triumph of functional beauty.



Cherokee's exterior design takes cues from two popular Jeep concept vehicles: Jeepster (far left) and Dakar (near left).



Jeep Cherokee Limited shown in Bright Silver.



TOOLS OF THE
ADVENTURE TRADE.

It all starts here, with two rugged and dependable transfer cases backed by 60 years of off-road experience. Both Command-Trac[®] and Selec-Trac[®] feature high-range four-wheel drive (4WD) for light off-road use and low-range 4WD for more extreme conditions. When running on sand or churning through a muddy trail, it's low-range 4WD that you learn to rely on. And it's here, in the new Jeep Cherokee.

The superior off-road capability of the new Jeep Cherokee starts with short front and rear overhangs, over 20 centimetres of suspension travel and a choice of two trail-tested 4WD systems with high and low range.

With the Turbo Diesel's Command-Trac shift-on-the-fly, part-time 4WD system, you can move from two wheel drive (2WD) to 4WD high range at speeds of up to 88 kph. Part-time means you only engage 4WD as you need it — off-road or on slick surfaces.

When returning to dry, paved surfaces, shift back into 2WD.

The Selec-Trac shift-on-the-fly, full-time 4WD system, fitted to petrol models, works the same way as Command-Trac in its basic operation — with one major exception. Selec-Trac features a convenient 4 FULL-TIME mode which can remain engaged over all road surfaces without drivetrain damage. There's no need to shift back and forth between 2WD and 4WD as road conditions change. And that's only the beginning.

Jeep engineers worked hard to simplify Cherokee's undercarriage. You won't find low-hanging wires or cables. Front and rear stabiliser bars are tucked up, out of danger's way. Tapered flanges on the front lower control arms allow for the suspension to "ride" over objects. For the errant rock strike off-road or kerb impact in the parking lot, the heavy-duty cast-iron make-up of these control arms is designed to withstand the impact. In the rear, shock absorbers are angled forward from the axle to maximise control when crawling over objects off-road.

Finally, before any Jeep model begins production, it must pass a series of engineering durability runs — one tough set of tests. Derived from the original testing that the Willys MB was subjected to as it became combat ready, these trials include 24,000 off-road kilometres.



Approach Angle (38.2 degrees): Degree of slope a 4x4 can approach without scraping the front undercarriage.

Breakover Angle (24.3 degrees): Degree of slope that defines the largest hill a 4x4 can travel over without scraping underbody components.

Departure Angle (32.4 degrees): Degree of slope a 4x4 can depart from without scraping the rear undercarriage.

Jeep Cherokee Sport shown in Flame Red.



A new sensor, which overrides the Clutch-Starter Interlock for Cherokee Turbo Diesel models, improves control when tackling extremely rugged terrain. Whenever low-range 4WD is engaged, you can start and stop the vehicle in gear. Another off-road aid in low-range 4WD is the fact that the engine automatically recalibrates to a higher idle and throttle-body strategy for low-speed rock crawling.

MUSCLE WITH
MANNERS.

Powerful engines with ample low end torque are Jeep Brand hallmarks. Cherokee's all-new 3.7L Power Tech V6 and all-new 2.5L Turbo Diesel Direct-Injection Power Tech I-4* combine raw power and ingenuity. The 3.7 litre power plant is one of the most powerful, responsive and efficient petrol engines we've ever produced. And while the all-new IS43 suspension system (independent front, solid-axle rear, 4-link front, 3-link rear) was built to withstand the rigours of off-road driving, Jeep engineers fine-tuned its on-road ride and handling to be nothing short of exceptional.

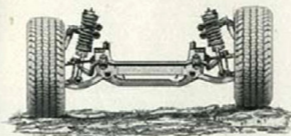
*Late Availability. Consult your Dealer.



The 3.7L Power Tech V6 engine delivers a mighty 155 kW of power @ 5200 rpm and 312 Nm of torque @ 4000 rpm.



The available 2.5L Turbo Diesel Power Tech I-4 engine serves up 105 kW of power @ 3800 rpm and 343 Nm of torque @ 2000 rpm.



The independent front suspension of Cherokee's IS43 suspension system incorporates antedive geometry which helps keep the vehicle more level when braking.

Jeep Cherokee Limited shown in Steel Blue.



You'll especially enjoy Cherokee's powerful acceleration when navigating busy city streets. An available power sunroof can increase air circulation, while allowing a great view of towering skyscrapers, or just the glorious sky.

On narrow trails and city streets, the IS43 suspension system delivers a solid, precise steering feel and steady straight-line stopping. Mounting the front coil springs and shock absorbers above the upper control arms attains a tight turning diameter (11.0 m). And careful selection of coil spring rates and shock absorber valving helps produce Cherokee's fluid on-road ride.

In the rear, a solid-axle, link-coil suspension contributes to the smooth ride, while progressive-rate springs help maintain consistent handling, whether you're driving alone, carrying passengers or towing a trailer.

Front and rear stabiliser bars work to minimise body lean when cornering and help balance the front-to-rear tyre load distribution, contributing to Cherokee's outstanding on-road manners. Goodyear tyres specially engineered for excellent wet surface traction strive to heighten your confidence behind the wheel.

An all-new power rack-and-pinion steering system provides definitive control for the driver and improves your "feel" of the road. A high degree of structural stiffness adds to Cherokee's solid ride.



The effort, feel and response of Cherokee's new rack-and-pinion steering are precisely tuned to provide the driver with decisive feedback and ultimate control — taking the concept of "fun-to-drive" to a whole new level.

OUR COMPREHENSIVE
PROTECTION
PLAN.

Even on the most rain-drenched stretch of road, you'll drive with confidence, enjoying the command-of-road driving position created by Cherokee's upright stance. The high seating position, sweeping windshield and sloping bonnet allow a great view of your environment. Combining a broad range of active and passive elements, the occupant safety system of the new Jeep Cherokee is truly first-class.

You can count on Cherokee's impressive list of safety features to get you through. Up front, standard Next Generation multistage driver and front-passenger air bags* have different levels of deployment, depending upon the severity of impact and whether or not passengers

are wearing their seat belts. Plus, supplemental side-curtain air bags**, which deploy from the headliner in the event of a side impact, are available for the first time on a Jeep vehicle.

Standard variably intermittent front windshield wipers, rear window wiper, rear defroster and available fog lamps keep your lines of view clear, even at highway speeds. The low washer fluid warning lamp helps to ensure you've got cleaning power when you need it.

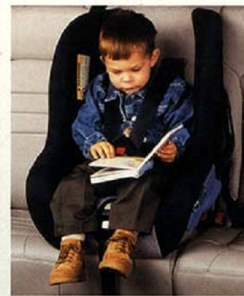
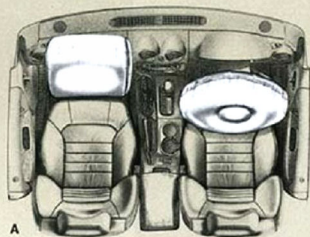
When you've got considerable amounts of gear to pack, pull the rear gate latch all the way out, opening the swing-gate as the flipper glass raises on its own. Or, simply pull the latch back half way to release just the flipper glass. It raises automatically — handy for stowing small packages in a hurry.

Properly secure all cargo.



A) Next Generation multistage driver and front-passenger air bags* offer added protection in frontal impacts.

B) Standard 'supplemental side-curtain air bags' protect both front and rear outboard occupants.



To more effectively secure compatible* aftermarket child seats, Jeep engineers incorporated the LATCH system in Cherokee. Just attach the lower tethers of the child seat to the anchors mounted between the upper and lower seat cushions. Then secure the top tether strap to the anchor on the seatback (all three rear-seat positions have them). That's it.



The power, heated foldaway mirrors are handy on chilly days.

In the back, all seating positions benefit from head restraints and everyone gets a three-point seat belt. Plus, our standard Sentry Key® Theft Deterrent System fends off would-be thieves without any extra effort from the driver. When the ignition key is inserted, it transmits a confirmation code to the Sentry Key module on the steering column. If it isn't a valid key, the engine is immobilised. It's that easy.

An available four-wheel antilock brake system (ABS) with Electronic Brake Distribution adapts to vehicle load and road surface changes. While Cherokee's standard power front disc and rear drum brake system benefits from a new tandem-diaphragm vacuum booster that greatly enhances response time.



Soft-edge webbing improves the comfort of three-point seat belts found throughout, including the rear centre seat.

* Children 12 and under should always be in a backseat correctly using an infant or child restraint system, or a seat belt that is right for their age and size.
** The LATCH system may also be used with top tethers on non-compatible aftermarket child seats to supplement the seat belts in restraining the seats. Please refer to your Owner's Manual for complete instructions.

A WELL-ROUNDED

INDIVIDUAL.

From the instrument cluster to the door-trim panels, Cherokee's all-new interior exemplifies extraordinary attention to detail. It is sculpted to offer all the features you'll need to enjoy the ride — whether you're heading out on the trails or hitting the highway.

Jump in and you'll appreciate the well-tailored, shapely front bucket seats. They offer outstanding lateral and thigh support, perfect for tackling rough terrain. Whether camping or commuting, Limited's power, leather-trimmed driver and front passenger seats make any drive more enjoyable.



With a 2649 millimetre wheelbase, Cherokee provides a generous 945 millimetres of rear-seat leg room and allows passengers easy entry and exit through spacious rear doors.

Thoughtfully placed controls put you immediately in command behind the wheel. From wipers to rear defroster, you'll find everything you need, right where you need it. The blue-green glow of the large backlit gauges, as well as the climate control and radio displays, naturally leads your eye to important information while driving at night. In addition, essential switches are

illuminated for ease of use after the sun goes down.



Limited instrument panel shown in Dark Slate Grey.



A) A padded centre console houses power window switches and dual removable cup holders.

B) Circular door handles curve into your hand, providing excellent grip.

C) Cherokee's jack, jack handle and tools are stored in their own removable case beneath the rear seat. So, you'll never have to remove your cargo just to change a flat.

D) Innovative rear door-trim pockets can hold a water bottle securely in place.

E) Cherokee's available overhead console houses courtesy/reading lamps and a mini trip computer.

F) Rounded air outlets allow quick and easy redirection of airflow to keep driver and passengers comfortable.

Limited leather-trimmed interior shown in Dark Slate Grey.





Flame Red



Black



Bright Silver Metallic



Steel Blue Pearl Coat



Salsa Red Pearl Coat



Stone White



Patriot Blue Pearl Coat



Woodland Brown Satin Glow



Dark Garnet Red Pearl Coat



Shale Green Metallic

SPORT Specifications



EXTERIOR DIMENSIONS (millimetres unless specified)

Length	
Wheelbase	2649
Overall Length (including spare)	4496
Width	
Overall Width	1819
Track, front/rear	1524/1516
Height	
Overall Height (with roof rails)	1866
Ground Clearance (at kerb weight)	
Running Ground Clearance	244
Approach Angle/Departure Angle	38.0°/32.3°
Breakover Angle	24.3°

INTERIOR DIMENSIONS (millimetres unless specified)

Head Room, front/rear	1034/1069
Leg Room, front/rear	1036/945
Shoulder Room, front/rear	1435/1435
Hip Room, front/rear	1448/1204
Cargo Volume (L) Rear Seats Up/Folded	821/3950
Seating Capacity	5

CAPACITIES/WEIGHTS

Fuel Tank (L)	70
Cooling System (L)	6
2.5L Turbo Diesel Power Tech I-4 engine	12.5
3.7L Power Tech V6 engine	13.0
Base Kerb Weight (kg)	
2.5L Turbo Diesel Power Tech I-4 engine	1925
3.7L Power Tech V6 engine	1858
Payload Capacity (kg)	
(with all occupants and cargo)	552
Towing Capacity (kg)	2250
Maximum Gross Vehicle Weight Rating (kg)	
2.5L Turbo Diesel Power Tech I-4 engine	2517
3.7L Power Tech V6 engine	2540

POWER TRAIN

Engines	3.7L Power Tech V6	2.5L Turbo Diesel Power Tech I-4*
Power, kW @ rpm	155 @ 5200	105 @ 3800
Torque, Nm @ rpm	312 @ 4000	343 @ 2000
Displacement cc	3701	2499
Bore x Stroke	93.0 x 91.0	92.0 x 94.0
Compression Ratio	9.1:1	17.5:1
Fuel System	Sequential multipoint electronic fuel injection	Common-rail direct electronic fuel injection

*Late availability. Consult your dealer.

POWER TRAIN (continued)

Transmissions

Heavy-duty five-speed manual with overdrive and synchronised forward gears; hydraulically assisted, adjustment-free clutch (2.5L I-4)

Multispeed automatic with alternate second gear ratio, over-drive and lock-up torque converter; electronically controlled (3.7L V6)

Gear Ratios, :1

	Multispeed automatic (3.7L V6)	5-speed manual (2.5L I-4)
1st	3.00	4.02
2nd/alternate	1.67/1.50	2.32/-
3rd	1.00	1.40
4th	0.75	1.00
5th		0.78
Reverse	3.00	3.55
Axle Ratio, :1	3.73	4.10
Overall Top Gear	2.80	2.91

FOUR-WHEEL-DRIVE SYSTEMS

Select-Trac® (Petrol only) – Full-time; two-speed with shift-on-the-fly; includes low-range (2.72:1); allows for two- or four-wheel-drive mode, full- or part-time 4WD; single-lever transfer case mode operation

Command-Trac® (Diesel only) – Part-time; two-speed with shift-on-the-fly; includes low-range (2.72:1); single-lever transfer case mode operation

BODY/SUSPENSION/CHASSIS

Body Design – UniFrame construction – body sheet metal and frame structural members welded and bonded into a single unit

Front Suspension – Independent with cast-iron lower and forged steel upper control arms, coil springs, stabiliser bar, low-pressure gas-charged shock absorbers

Rear Suspension – Solid axle with two trailing lower arms, triangular upper arm, coil springs, stabiliser bar, low pressure gas-charged shock absorbers

Trac-Lok Rear Differential – Rear axle differential that locks in response to wheel slippage

Steering – Power-assisted, rack-and-pinion; 17:01 ratio

Turns – 3.6, lock-to-lock

Turning Diameter – 10.94 m, kerb-to-kerb

Brake System – Front – Hydraulic, power-assisted low-drag ventilated disc brakes; full cast; 288mm rotor diameter

Rear – Hydraulic, power-assisted self-adjusting dual-servo drum brakes (234mm x 44.5mm); full cast

SPORT Standard Features and Options

Sport Standard Features

Air Bags – Next Generation multistage driver and front passenger*
– Supplemental side curtains, headliner-mounted*

Air Conditioning – Manual temperature control

Alternator – 136 ampere 136 ampere (Petrol), 124 ampere (Diesel)

Assist Handles – Overhead for front and rear outboard seating positions

Axle Ratio – 3.73 (Petrol), 4.10 (Diesel)

Battery – 525 ampere (Petrol), 700 ampere (Diesel), maintenance-free with Battery-Saver Feature

Brakes – Power front disc/rear drum

Cargo Area – Tie-down bars (four) recessed in floor and one D-ring mounted on each quarter panel

Console – Full-length centre floor console with removable dual front cup holders, padded armrest and large storage bin with CD/cassette provisions

Convenience Group I – Cargo trim panel with cubby and integral storage net, illuminated sun visor vanity mirrors, rear cargo area 12 volt power outlet, courtesy lamps, map/dome reading lamps and cargo compartment lamp

Differential – Rear, Trac-Lok limited-slip

Door Locks – Child-protection rear

Engine – 3.7L Power Tech V6
– 2.5L Turbo Diesel

Engine Immobiliser – Sentry Key®

Floor Mats – Front and rear

Glass – Flipper-style swing gate glass

Instrument Cluster – Tachometer, 240kph speedometer, coolant temperature and fuel gauges with indicators for low fuel, seat belts, brake system, parking brake, check engine, high-beam lamps, air bag, low oil pressure, charging system and lamps

Lighting, Exterior – Round halogen headlamps with parade mode and delay-off features

Mirrors, Exterior – Dual power, heated foldaway
Interior – Rearview, day/night

Power Locks – Speed-sensitive and illuminated entry

Power Outlets – Auxiliary front and rear cargo area 12 volt outlets and ignition-switched lighter outlet

Remote Keyless Entry – Two key fob radio frequency transmitters with controls for power door locks, illuminated entry and flipper glass open

Roof Rails – Side rails with 69 kg capacity

Seats – Fresno cloth log-back reclining front buckets and rear 65/35 "one-handed" split-folding bench with six shopping big hooks on rear of seatback, adjustable outboard and fixed centre head restraints and user-ready LATCH system for compatible aftermarket child seats

Shoulder Belts – Height-adjustable front with traveling inboard buckles, constant-force retractors and driver's pretensioner; rear includes three-point center seat belt and cinching latch plates on outboard belts to minimise movement of aftermarket child seats

Skid Plate – Front suspension

Sound System – AM/FM stereo radio with cassette and CD players, graphic

equaliser and CD changer controls and six speakers

Steering – Power rack-and-pinion with power steering cooler
– Soft-feel molded vinyl steering wheel

Steering Column – Tilt

Sun Visors – Dual illuminated sun visor vanity mirrors

Suspension – IS43 Independent front suspension with cast-iron lower and forged steel upper control arms, coil springs, low-pressure gas-charged shock absorbers, jounce bumpers and stabiliser bar; Solid axle rear with two trailing lower arms, A-shaped upper arm, coil springs, stabiliser bar and low-pressure gas-charged shock absorbers

Swing-Gate – Includes flipper-style glass with washer/wiper and electric defrost

Tires – 235/70R16 Goodyear Wrangler Ultra Grip all-season BSW
– Full-size matching spare

Transfer Case – Selec-Trac® NV242 full-time 4WD (Petrol)
– Command-Trac® NV231 part-time 4WD (Diesel)

Transmission – Multispeed automatic (Petrol)
– Five-speed manual (Diesel)

Wheels – 16"x7" Full-Face Style Steel

Windows – Power with driver one-touch-down feature

Wiper System – Front, variable-speed intermittent

SPORT Options

Brakes – Four-wheel antilock

Off-Road Group – Fuel tank and transfer case skid plates and 235/70R16 Goodyear Wrangler SR-A all-terrain OWL tyres

*Children 12 and under should always be in a backseat correctly using an infant or child restraint system, or a seat belt that is right for their age and size.



Fresno cloth, standard on Sport. Shown in Dark Slate Grey (Standard)



Fresno cloth, standard on Sport. Shown in Taupe (Optional)



16"x7" Full-Face Style Steel (Standard: Sport)





Bright Silver Metallic



Flame Red



Black



Steel Blue Pearl Coat



Salsa Red Pearl Coat



Stone White



Patriot Blue Pearl Coat



Woodland Brown Satin Gloss



Dark Garnet Red Pearl Coat



Shale Green Metallic

LIMITED Specifications



EXTERIOR DIMENSIONS (millimetres unless specified)

Length	4496
Wheelbase	2649
Overall Length (including spare)	4496
Width	1819
Overall Width	1819
Track, front/rear	1524/1516
Height	1866
Overall Height (with roof rails)	1866
Ground Clearance (at kerb weight)	244
Running Ground Clearance	244
Approach Angle/Departure Angle	38.0°/32.3°
Breakover Angle	24.3°

INTERIOR DIMENSIONS (millimetres unless specified)

Head Room, front/rear	1034/1069
Leg Room, front/rear	1036/945
Shoulder Room, front/rear	1435/1435
Hip Room, front/rear	1448/1204
Cargo Volume (L)	821/1050
Rear Seats Up/Folded	821/1050
Seating Capacity	5

CAPACITIES/WEIGHTS

Fuel Tank (L)	70
Cooling System (L)	13.0
Base Kerb Weight (kg)	1865
Payload Capacity (kg)	552
(with all occupants and cargo)	2250
Towing Capacity (kg)	2250
Maximum Gross Vehicle Weight Rating (kg)	2540

POWER TRAIN

Engine	3.7L
Power, kW @ rpm	155 @ 5200
Torque, Nm @ rpm	312 @ 4000
Displacement (cc)	3701
Bore x Stroke	93.0 x 91.0
Compression Ratio	9.1:1
Fuel System	Sequential multiport electronic fuel injection
Transmission	Multispeed automatic with alternate second gear ratio, overdrive and lockup torque converter; electronically controlled

POWER TRAIN (continued)

Gear Ratios, :1	Multispeed automatic
1st	3.00
2nd	1.67
2nd alternate	1.50
3rd	1.00
4th	0.75
Reverse	3.00
Axle Ratio, :1	3.73
Overall Top Gear	2.40

FOUR-WHEEL-DRIVE SYSTEMS

Selec-Trac® NV242 – Full-time; two-speed with shift-on-the-fly; includes low-range (2.72:1) allows for two- or four-wheel-drive mode, full- or part-time 4WD; single-lever transfer case mode operation

BODY/SUSPENSION/CHASSIS

Body Design – UniFrame construction – body sheet metal and frame structural members welded and bonded into a single unit

Front Suspension – Independent with cast-iron lower and fogged steel upper control arms, coil springs, stabiliser bar, low-pressure gas-charged shock absorbers

Rear Suspension – Solid axle with two trailing lower arms, triangular upper arm, coil springs, stabiliser bar, low-pressure gas-charged shock absorbers

Trac-Lok Rear Differential – Rear axle differential that locks in response to wheel slippage

Steering – Power-assisted, rack-and-pinion; 17.0:1 ratio

Turns – 3.6, lock-to-lock

Turning Diameter – 10.94 m, kerb-to-kerb

Brake System – Front – Hydraulic, power-assisted low-drag ventilated disc brakes; full cast; 288mm rotor diameter

Rear – Hydraulic, power-assisted self-adjusting dual-servo drum brakes (25.4mm x 44.5mm); full cast

Antilock brake system – Three-channel with three active speed sensors and electronic brake distribution (EBD)

LIMITED Standard Features and Options

Limited Standard Features

Air Bags – Next Generation multistage driver and front passenger*
 – Supplemental side curtains, headliner-mounted*
Air Conditioning – Manual temperature control
Alternator – 136 ampere
Assist Handles – Overhead for front and rear outboard seating positions
Axle Ratio – 3.73:1
Battery – 525 ampere, maintenance-free with Battery-Saver Feature
Brake-Park Interlock – Automatic transmission
Brakes – Power front disc/rear drum
Cargo Area – Tie-down bars (four) recessed in floor, one D-ring mounted on each quarter panel and retractable cargo compartment cover
Console – Full-length centre floor console with removable dual front cup holders, padded armrest and large storage bin with CD/cassette provisions
 – Overhead mini-console with mini-trip computer

Convenience Group 1 – Cargo trim panel with cubby and integral storage net, illuminated sun visor vanity mirrors, rear cargo area 12 volt power outlet, courtesy lamps, map/dome reading lamps and cargo compartment lamp
Differential – Rear, Trac-Lok limited-slip
Door Locks – Child-protection rear
Engine – 3.7L Power Tech V6
Engine Immobiliser – Sentry Key®
Floor Mats – Front and rear
Glass – Flipper-style swing-gate glass

Instrument Cluster – Tachometer, 240-kph speedometer, coolant temperature and fuel gauges with indicators for low fuel, seat belts, brake system/parking brake, check engine, high-beam lamps, air bag, low oil pressure, charging system and lamps
Lighting, Exterior – Round halogen headlamps with parade mode and delay-off features
 – Submersible halogen fog lamps
Interior – Ashtray

Mirrors, Exterior – Dual power, heated foldaway
 Interior – Rear-view, day/night
Power Locks – Speed-sensitive and illuminated entry
Power Outlets – Auxiliary front and rear cargo area 12 volt outlets and ignition-switched lighter outlet
Remote Keyless Entry – Two key fob radio frequency transmitters with controls for power door locks, illuminated entry and flipper glass open
Roof Rails – Side rails with 68kg capacity

Seats – Premium leather-trimmed, heated, power-adjustable, low-back, reclining front buckets and rear 65/35 "one-handed" split-folding bench with six shopping bag hooks on rear of seatback, adjustable outboard and fixed centre head restraints and user-ready LATCH system for compatible aftermarket child seats
Shoulder Belts – Height-adjustable front with traveling inboard buckles, constant-force retractors and driver's pretensioner; rear includes three-point centre seat belt and cinching latch plates on outboard belts to minimise

movement of aftermarket child seats
Skid Plate – Front suspension
Sound System – AM/FM stereo radio with cassette and CD player, graphic equaliser and CD changer controls
 – Infinity® premium sound system with six speakers and steering wheel-mounted audio controls
Speed Control – Electronic steering wheel-mounted controls with leather-wrapped steering wheel
Steering – Power rack-and-pinion with power steering cooler
 – Leather-wrapped steering wheel with speed control switches
Steering Column – Tilt
Sun Visors – Dual illuminated visor vanity mirrors

Suspension – IS43 Independent front suspension with cast-iron lower and forged steel upper control arms, coil springs, low-pressure gas-charged shock absorbers, jounce bumpers, and stabiliser bar; Solid axle rear with two trailing lower arms, A-shaped upper arm, coil springs, stabiliser bar and low-pressure gas-charged shock absorbers
Swing-Gate – Includes flipper-style glass with washer/wiper and electric defrost
Tires – 235/70R16 Goodyear Wrangler Ultra Grip all-season BSW
 – Full-size matching spare tire
Transfer Case – Selec-Trac® NV242 full-time 4WD
Transmission – Multispeed automatic
Wheels – 16"x7" Mechanica cast aluminium
Windows – Power with driver one-touch-down feature
Wiper System – Front, variable-speed intermittent

LIMITED Options

Off-Road Group – Fuel tank and transfer case skid plates and 235/70R16 Goodyear Wrangler SR-A all-terrain OWL tyres
Sunroof – Power tilt-and-slide with solar-tint glass and express-open feature

*Children 12 and under should always be in a back seat correctly using an infant or child restraint system, or a seat belt that is right for their age and size.



Premium leather, standard on Limited. Shown in Dark Slate Gray (Standard).



Premium leather, standard on Limited. Shown in Light Taupe (Optional).



16"x7" Mechanica Cast Aluminium (Standard; Limited)





THERE'S ONLY ONE
EARTH.



Handle it with care. As a Jeep vehicle owner, you have the means to experience many rare places on this planet. We hope you'll take advantage of the opportunity and treat the environment with the utmost respect. Strive to leave each place better than you found it, so future generations will be able to enjoy our great outdoors.



Jeep Cherokee Limited shown in Bright Silver.
Jeep Cherokee Sport shown in Flame Red.



Jeep

THERE'S ONLY ONE

All product illustrations and specifications are based upon current information at the time of publication approval. Although descriptions are believed correct, accuracy cannot be guaranteed. DaimlerChrysler Corporation reserves the right to make changes from time to time, without notice or obligation, in prices, specifications, colours, materials, and to change or discontinue models. See your dealer for details. Jeep, Wrangler, Cherokee, Grand Cherokee, Command-Trac, Seles-Trac and the Jeep grille are trademarks of DaimlerChrysler.

Infinity is a registered trademark of Infinity Systems, Inc.

Visit the jeep website at:
www.jeep.com.au

A224004 9/01 Part number: SBKJ2002