

# DODGE CHARGER



2022

# 2022 CHARGER

**3 INTRODUCTION**

**4 SCAT PACK 392**

**5 SRT HELLCAT® WIDEBODY**

**6 SRT HELLCAT REDEYE WIDEBODY**

**7 JAILBREAK**

**8 POWERTRAINS**

**9 WIDEBODY**

**10 ALL-WHEEL-DRIVE SYSTEM**

**11 INTERIOR**

**12 TECHNOLOGY**

**13 SAFETY & SECURITY FEATURES**

**14 INTERIOR AND EXTERIOR**

**COLOUR CHOICES**

**15 EXTERIOR STRIPE CHOICES**

**16 WHEEL CHOICES**

Now and forever, Dodge is about performance, power and muscle. But that formula isn't simply calculated by the amount of insane horsepower and fierce torque our vehicles produce. Performance is also measured by the way advanced safety and security features protect passengers. The onboard technology that keeps occupants connected to the people, places and entertainment that matter most is another gauge of power.

Dodge Charger is a muscle car disguised as a family sedan. Power, performance, race-inspired technology and seating for five come together to give drivers the complete package. With a choice between Rear- (RWD) and All-Wheel Drive (AWD), Charger offers year-round versatility.



# POWER. PERFORMANCE. MUSCLE.

/// SRT HELLCAT® WIDEBODY SHOWN IN INDIGO BLUE

/// SCAT PACK 392 WIDEBODY SHOWN IN F8 GREEN

/// SCAT PACK 392 WIDEBODY SHOWN IN TRIPLE NICKEL

## /// 2022 DODGE CHARGER

How does a four-door, five-passenger sedan feel at home in a brand known for its pure muscle? Easily. With a brilliant combination of power, performance and control, every Charger in the 2022 lineup has stayed true to its performance-car roots. Whether you bring home an efficient, responsive Charger SXT, the supercharged authority of the SRT Hellcat Redeye Widebody or anything in between, there's a Charger that's perfect for you.

# SCAT PACK 392



## /// SCAT PACK 392 AND SCAT PACK 392 WIDEBODY

It's a hefty 485-horsepower, 475-lb-ft-of-torque 392 HEMI® V8 engine that powers Charger Scat Pack 392. Big Brembo® brakes, Three-Mode Electronic Stability Control (ESC)<sup>1\*</sup> with Full-Off Mode, high-performance suspension with Bilstein® shocks and 20 by 9-inch aluminum wheels, and available cold-air induction help you use that power responsibly. With the available Widebody package, the uniquely tuned suspension features Three-Mode (Street [Auto], Sport and Track) Bilstein Adaptive Damping Suspension System and 20 by 11-inch wheels. The result is radical levels of lateral grip, acceleration and braking that deliver premium handling. Massive 15.4-inch Brembo two-piece brake rotors with 6-piston front calipers deliver tremendous stopping power, heat management and longevity, producing 60 - 0-mph stops in 32.6 metres (107 feet). The numbers Scat Pack Widebody yields tell an impressive story: 0 - 60 mph in 4.3 seconds, quarter-mile in 12.4 seconds ET and 0.98 g lateral grip on the skid pad.<sup>2</sup>

## /// SCAT PACK INTERIOR

The interior boasts standard race-inspired seats with an embroidered Scat Pack Bee logo (standard high-performance premium cloth or available Nappa leather-faced with Alcantara® suede inserts). All Scat Pack models include Dodge

SRT® Performance Pages that features Launch Control, g-force meter, drag-race timers and more. This real-time data can be accessed on either the standard 7-inch reconfigurable digital display or the standard 8.4-inch Uconnect® touchscreen. Customize steering feel, transmission shift points, throttle response, ESC<sup>1</sup> tuning and suspension firmness (if equipped with Adaptive Damping Suspension) via the standard SRT Drive Modes.

## /// NEW HEMI® ORANGE PACKAGE – A BOLDER SLICE OF STYLE

Opt to equip your Charger with the new HEMI Orange Package. Available exclusively on GT RWD and Scat Pack 392 Widebody trim levels, this package brings race-inspired style to your vehicle. A sporty, offset Orange and Gunmetal stripe runs tip to tail for maximum impact. Orange brake calipers are visible through the spokes of the 20 by 11-inch Carbon Black Warp-Speed wheels on Scat Pack or 20 by 9-inch wheels on GT. The trim-level badging with pops of Orange does the rest of the talking. Inside, Desert Orange accent stitching gives a custom feel to the instrument panel, steering wheel, shifter boot, seats and doors. K-Black and Gloss Black accents are found on the three steering wheel bezels, the cluster mask trim, HVAC rings and the shifter body. An Orange-accented “392” instrument-panel badge also sets this package apart. (Shown on cover.)

\* A note about this catalogue: all disclosures can be found on the last page.

# SRT HELLCAT<sup>®</sup> WIDEBODY

# 717<sup>HP</sup>



### /// THE NAME SAYS IT ALL

Nothing short of a sinister, the track-inspired Charger SRT Hellcat Widebody throws down serious performance numbers. Its 717-horsepower, 650-lb-ft-of-torque output is supplied by a Supercharged 6.2L HEMI<sup>®</sup> SRT Hellcat V8 engine. Its dominance shows in 0 - 60-mph runs in 3.6 seconds and its impressive 10.96-second quarter-mile elapsed time – even on street tires<sup>2</sup>

### /// SRT<sup>®</sup> DRIVE MODES

All SRT Hellcat trim levels feature Drive Modes specific to the vehicle. The SRT tuned Bilstein<sup>®</sup> Three-Mode Adaptive Damping Suspension System provides driver-selectable settings including Street (Auto) Mode = sporty but compliant ride; Sport Mode = firm, maximum handling; and Track Mode = firm, maximum handling plus performance shifting and a gear-holding feature to suit any driver's needs. The SRT Drive Modes can be accessed via the Uconnect<sup>®</sup> touchscreen.

# SRT HELLCAT<sup>®</sup> REDEYE WIDEBODY

UP TO **807** HP



1/4-MILE – 10.6 SECONDS  
0 – 60 MPH IN 3.5 SECONDS<sup>2</sup>



UP TO 807 HORSEPOWER  
707 LB-FT OF TORQUE



TRACK SPEED OF 327 KM/H  
(203 MPH<sup>2</sup>)



### /// SRT HELLCAT REDEYE

Powered by the up to 807-horsepower, 707-lb-ft-of-torque Supercharged 6.2L high-output HEMI<sup>®</sup> V8 engine that's mated to the TorqueFlite<sup>®</sup> 8HP90 8-speed automatic transmission, Widebody sets the pace as the nameplate's most intense trim level. It can run a quarter-mile in 10.6 seconds at 207 km/h (129 mph), go from 0 – 60 mph in the mid-3-second range and hit a top track speed of 327 km/h (203 mph<sup>2</sup>). SRT Hellcat Redeye also uses Torque Reserve to deliver up to 3.9 psi of boost at launch and up to 55 percent more engine torque. Both the steel prop shafts and the half shafts allow the vehicle to handle the additional torque created with the help of the SRT Power Chiller<sup>®</sup> and After-Run Chiller. Essentially, this daily driver is a beast.

### /// BREAK FREE FROM CONVENTION

For the first time ever, Dodge designers are riding shotgun, and you're in the driver's seat. The new, optional Jailbreak Package for 2022 Charger SRT Hellcat Redeye Widebody models unlocks ordering restrictions, allowing owners to run wild in more than 20 categories, including seven options for seats, stripes and wheels; six brake caliper colour options; five exterior badging finishes; four choices each of steering wheels; four seat belt colours and floor mats; and much more. The SRT Hellcat Redeye Widebody Jailbreak is bumped to 807 horsepower thanks to a revised powertrain calibration.

GO TO [WWW.DODGE.CA](http://WWW.DODGE.CA) TO CUSTOMIZE YOUR CHARGER

# PICK IT MAKE IT JAILBREAK

**/// BREAK FREE FROM CONVENTION** Exclusive to the SRT Hellcat® Redeye Widebody, the available Jailbreak Package unlocks 10 additional horsepower and creates a Charger that's uniquely yours. Jailbreak unleashes more colour availability, previously restricted colour combinations and, for the first time, a choice of badge colours. Buyers can also choose their wheels, stripes, interior seating and exterior colour preferences.

**GO TO [WWW.DODGE.CA](http://WWW.DODGE.CA) TO CUSTOMIZE YOUR CHARGER**

**5 EXTERIOR BADGE COLOURS:** BLACK CHROME, RED, BRASS MONKEY, SATIN CHROME, MIDNIGHT METALLIC.



**7 WHEEL CHOICES:** 20 BY 11-INCH CARBON BLACK LIGHTWEIGHT WHEELS, 20 BY 11-INCH BRASS MONKEY WIDEBODY WHEELS, 20 BY 11-INCH CARBON BLACK WHEELS, 20 BY 11-INCH DEVIL'S RIM WHEELS, 20 BY 11-INCH LIGHTWEIGHT GRANITE WHEELS, 20 BY 11-INCH SATIN CARBON WARP-SPEED WHEELS, 20 BY 11-INCH WARP-SPEED GRANITE WHEELS.



**CHARGER SEAT MATERIALS AND COLOURS:** BLACK LAGUNA/ALCANTARA®, SEPIA LAGUNA, DEMONIC RED LAGUNA, BLACK LAGUNA, BLACK AND HAMMERHEAD GREY LAGUNA.



**CHARGER EXTERIOR GRAPHIC OPTIONS:** GUNMETAL DUAL STRIPE, BLUE DUAL STRIPE, SILVER DUAL STRIPE, CARBON DUAL STRIPE, RED DUAL STRIPE. SHOWN ON PAGE 15: SATIN BLACK-PAINTED HOOD, SATIN BLACK-PAINTED ROOF, SATIN BLACK-PAINTED HOOD/ROOF/DECKLID.



**ADDITIONAL INTERIOR OPTIONS:**

- 2 DRIVER AIR BAG BADGES: RED/LIT, WHITE/LIT
- 5 APPLIQUÉ FINISHES: DUB PLATE, HECTIC MESH, DARK ENGINE TURN, CARBON FIBRE, COPPER WEAVE
- 2 IP BADGES: JAILBREAK IP BADGE, BASE REDEYE IP BADGE
- 2 STEERING WHEEL WRAP OPTIONS: LEATHER, ALCANTARA
- 2 HEADLINER/A-PILLAR OPTIONS: TWILL, ALCANTARA
- 4 FLOOR BINDING COLOURS: BLACK, SEPIA, DEMONIC RED, HAMMERHEAD GREY
- 4 SEAT BELT COLOURS: BLACK, SEPIA, DEMONIC RED, HAMMERHEAD GREY

**ADDITIONAL EXTERIOR OPTIONS:**

- 6 BRAKE CALIPER COLOUR OPTIONS: RED, ORANGE, BLACK, GUNMETAL, YELLOW, BLUE
- 2 EXHAUST TIP OPTIONS: CHROME, BLACK
- 2 SPOILER OPTIONS: STANDARD, PERFORMANCE



## READY TO ROAM

### /// CANADA'S BEST-SELLING ENGINE<sup>3</sup> – 3.6L PENTASTAR VARIABLE VALVE TIMING (VVT) V6

The robust 3.6L engine, with a fuel efficiency rating of 7.8 L/100 km (36 mpg) highway<sup>4</sup> on Rear-Wheel-Drive (RWD) models, produces up to 300 horsepower and 264 lb-ft of torque. It's the combination of fully independent dual-cam phasing, sequential multipoint fuel injection, high-flow intake and exhaust ports that results in the perfect blend of high torque and fuel efficiency.

### /// 5.7L HEMI VVT V8

Providing 370 horsepower and 395 lb-ft of torque, this powerplant moves you from 0 – 60 mph in the 5-second range. With the standard TorqueFlite<sup>®</sup> 8-speed automatic transmission, the FuelSaver Multi-Displacement System (MDS) technology allows the vehicle to transition from eight cylinders to four to optimize fuel efficiency when full power is not required.

### /// 6.4L SRT HEMI V8

This engine assaults the asphalt with 485 horsepower, 475 lb-ft of torque, an impressively flat torque curve and a 0 – 60-mph time in the 4-second range. With the standard TorqueFlite 8-speed automatic transmission, the FuelSaver MDS technology deactivates four cylinders when eight are not needed, creating a double threat of power and efficiency.

### /// 6.2L SUPERCHARGED HEMI SRT HELLCAT V8

With 717 horsepower, 650 lb-ft of torque and a fierce 0 – 60-mph time in the 3-second range, this engine makes Charger SRT Hellcat Widebody a force to be reckoned with.

### /// 6.2L SUPERCHARGED HIGH-OUTPUT HEMI SRT HELLCAT V8

SRT Hellcat Redeye Widebody uses 797 horses (807 hp on Jailbreak models), 707 lb-ft of torque and a TorqueFlite 8HP90 8-speed automatic transmission to run a quarter-mile in 10.6 seconds at 207 km/h (129 mph), go from 0 – 60 mph in the mid-3-second range and hit a top track speed of 327 km/h (203 mph<sup>2</sup>).

/// SRT HELLCAT WIDEBODY SHOWN IN WHITE KNUCKLE WITH AVAILABLE DUAL STRIPES IN CARBON

3.6L PENTASTAR™ VVT V6

UP TO **300** // **264**  
HORSEPOWER LB-FT TORQUE

5.7L HEMI<sup>®</sup> VVT V8

**370** // **395**  
HORSEPOWER LB-FT TORQUE

6.4L SRT<sup>®</sup> HEMI VVT V8

**485** // **475**  
HORSEPOWER LB-FT TORQUE

6.2L SUPERCHARGED HEMI SRT HELLCAT<sup>®</sup> V8

**717** // **650**  
HORSEPOWER LB-FT TORQUE

6.2L SUPERCHARGED H.O. HEMI SRT HELLCAT V8

UP TO **807** // **707**  
HORSEPOWER LB-FT TORQUE



# WIDE-REACHING AGGRESSION



/// Charger Widebody models have looks as aggressive as their performance. The iconic-inspired design showcases scalloped bodysides, an imposing grille and an all-out aggressive look. A designed performance hood provides maximum air intake to the powerplant from the functional hood scoop to boost power. The mail-slot grille lets cool air travel into the radiator to maintain ideal operating temperatures even in the hottest conditions. Side sills connect the front and rear fascias to help amplify the integrated design. In the rear, a standard one-piece, body-colour performance spoiler details the back design while adding downforce to help bring high-speed balance to the vehicle. The Widebody flares out an additional 88.9 mm (3.5 inches) from the overall width of the Charger for a more dominating, planted presence.

Charger SRT Hellcat® Widebody and Scat Pack 392 Widebody models ride on standard 20 by 11-inch aluminum wheels and wider, stickier Pirelli® 305/35ZR20 tires (Three-Season tires are available). This combination teams up with a competition suspension tuning with the Bilstein® Three-Mode Adaptive Damping Suspension System to produce even more grip, delivering next-level performance on the street, strip and road course. SRT Hellcat Widebody runs 2.1 seconds faster than the standard body on a 3.4-km (2.1-mile) road course, equal to 13 car lengths after one lap.

/// SRT HELLCAT WIDEBODY SHOWN IN FROSTBITE WITH AVAILABLE SATIN BLACK-PAINTED GRAPHICS PACKAGE, AND SCAT PACK WIDEBODY SHOWN IN GO MANGO WITH AVAILABLE SATIN BLACK-PAINTED GRAPHICS PACKAGE



## UNCOMPROMISING PERFORMANCE

### /// ADVANCED ALL-WHEEL DRIVE (AWD)

When Mother Nature throws a curve ball, Charger hits it out of the park. Designed to perform no matter the conditions, the available on-demand AWD and front-axle disconnect seamlessly transition between Rear-Wheel Drive (RWD) and AWD without driver intervention on V6-powered models. Under normal driving conditions, power to the front wheels is disengaged and 100 percent of the engine's torque is directed to the rear wheels. When sensors indicate more traction is needed, the system automatically engages the front wheels and instantly transitions to AWD Mode. These systems work with the vehicle's Electronic Stability Control (ESC)<sup>1</sup> system to deliver precise front-to-rear torque control while preserving unrelenting drive.

**ADVANCED  
AWD SYSTEM**

/// GT AWD SHOWN IN WHITE KNUCKLE  
WITH BLACKTOP PACKAGE



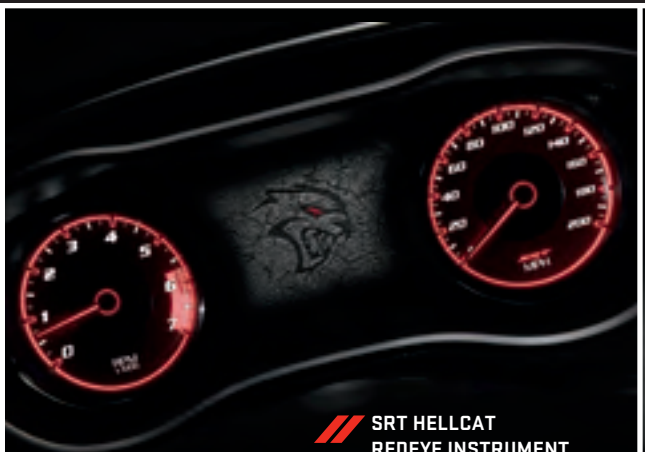
# STYLE DRIVEN BY COMFORT

/// SRT HELLCAT® SHOWN WITH REAL CARBON FIBRE INTERIOR ACCENTS ON THE IP AND CENTRE CONSOLE, AVAILABLE IN THE CARBON/SUEDE INTERIOR PACKAGE

## /// FOREVER AN ICON

Heritage-inspired design cues blend seamlessly with today's technology. A one-piece extruded aluminum instrument-panel bezel houses the standard 7-inch reconfigurable digital gauge cluster. Buttons on the steering wheel let you scroll through hundreds of different vehicle configurations and customize what information you see and how you see it.

Spacious and comfortable, Charger offers enough room for five adults. Seat options range from premium cloth to Nappa leather-faced with Alcantara® suede inserts to premium Laguna full leather. Standard cabin details include integrated storage, soft-touch surfaces and standard Dual-Zone Automatic Temperature Control (ATC). Heated/ventilated front seats, heated rear seats and a full-circumference heated steering wheel for year-round comfort are also available.



/// SRT HELLCAT REDEYE INSTRUMENT CLUSTER SHOWN



/// SRT HELLCAT SHOWN WITH BLACK LAGUNA LEATHER SEAT WITH EMBOSSED SRT HELLCAT LOGO



/// SRT HELLCAT SHOWN WITH BLACK LAGUNA LEATHER SEATS

# BOLD 8.4-INCH TOUCHSCREEN



Uconnect® brings a wide range of interactive features to your vehicle and beyond through a highly intuitive communication experience. Trips are enhanced with informative and entertaining apps. Access them on your Uconnect touchscreen as well as your smartphone.

Listen to your favourite channel from your connected device, then flip to SiriusXM<sup>5</sup> in your car and enjoy the best ad-free music, plus every major sport and the biggest names in entertainment, news and comedy. You'll get over 150 channels, all at the press of a button. With the SiriusXM Platinum plan<sup>5</sup> you get every channel available on your satellite radio, and you can also listen wherever you go on your portable devices with the SiriusXM App<sup>5</sup>, which is included with your trial. Available.

Drive worry-free with SiriusXM Guardian<sup>TM6</sup> – a premium suite of safety and convenience services that can be accessed in-vehicle or through the Uconnect App<sup>6</sup>. Includes a one-year trial. Available.

## DRIVEUCONNECT.CA

### /// APPLE CARPLAY<sup>7</sup>

Display your favourite iPhone apps right on your Uconnect touchscreen. Access your iTunes library, call anyone in your contacts list or just ask Siri<sup>9</sup> to help you out while you drive. Get directions, make calls and send messages, and connect to Apple Music, all without pausing your drive. Standard.

### /// ANDROID AUTO<sup>TM7</sup>

Connect your Android<sup>TM</sup> phone to bring the best of Google with you in your Uconnect system. Talk to Google on Android Auto and get things done with your voice so you can keep your focus on driving. Easily send messages, get directions, control media and more. Just say, "Hey Google" or, in compatible cars, long-press the voice-control button on your steering wheel to get started. Standard.



SiriusXM  
**TRAFFIC PLUS TRAVEL LINK**



## SAFETY & SECURITY

**/// PARKVIEW® REAR BACK-UP CAMERA**<sup>9</sup> This system displays the area directly behind your vehicle when the vehicle is in Reverse. Dynamic grid lines adjust with steering input to assist in parking. Standard.

**/// PARK-SENSE® REAR PARK ASSIST**<sup>9</sup> When your vehicle is in Reverse and moving at a low speed, the system can detect objects in your vehicle's path. When sensors detect objects in the back-up pathway, the system provides an audible and visual warning. Standard.

**/// BLIND-SPOT MONITORING (BSM) WITH REAR CROSS-PATH DETECTION**<sup>9</sup> Dual radar sensors constantly monitor driver blind spots, providing notification of an encroaching vehicle via illuminating icons in the sideview mirrors and by audible chime. The system includes Rear Cross-Path Detection<sup>9</sup>, which monitors for vehicles and objects in perpendicular relationships to the vehicle while backing out of parking spots or driveways. Available.

**/// ADAPTIVE CRUISE CONTROL (ACC)**<sup>9</sup> Automatically adjusts vehicle speed to maintain desired distance from the vehicle ahead and can bring the vehicle to a full stop without driver intervention. Available.

**/// FULL-SPEED FORWARD COLLISION WARNING WITH ACTIVE BRAKING**<sup>9</sup> Radar and camera technology combine to alert you when the system senses potential frontal impact. If you're not able to respond quickly enough, the system can automatically engage the brakes with the ability to bring the vehicle to a complete stop. Available.

**/// LANE DEPARTURE WARNING (LDW) WITH LANE KEEP ASSIST**<sup>9</sup> This system measures your position within lane boundaries. If it detects an unintentional lane drift, it will alert you and can correct the vehicle back into the lane. Available.

**/// ELECTRONIC STABILITY CONTROL (ESC)**<sup>1</sup> This system is designed to assist the driver in maintaining control of the vehicle when a loss of traction is detected. ESC<sup>1</sup> senses when a vehicle loses steering control and attempts to correct the vehicle's course by automatically applying the brakes at individual wheels. Standard.

**/// RAIN-SENSING WINDSHIELD WIPERS** System sensors automatically detect moisture on the windshield and activate the wipers. Standard.

**/// READY ALERT BRAKING** The system anticipates situations when you might initiate an emergency brake stop and uses the ESC<sup>1</sup> pump to pre-charge the brake system in order to decrease the time required for full brake application. Standard.

**/// RAIN BRAKE SUPPORT** When your car's windshield wipers have been activated, the system pulses the brake pads closer to the spinning rotors, helping to keep the rotors and pads dry for greater control and operator security. Standard.

**/// DODGE AIR FILTRATION SYSTEM** The enhanced air filtration system provides even cleaner air for you and your family. The new Air Filtration System filters 95 percent of air particulates, reducing many types of solid and liquid airborne matter, such as dust, smoke, droplets and aerosols, making it the cleanest cabin air ever in a Dodge vehicle. Standard.

**/// SRT HELLCAT® WIDEBODY SHOWN IN  
WHITE KNUCKLE WITH SATIN BLACK-  
PAINTED GRAPHICS PACKAGE**

## INTERIOR COLOUR CHOICES



Sport cloth – Black with Tungsten accent stitching  
Standard on SXT



Performance cloth with Houndstooth-pattern inserts – Black with Houndstooth-pattern inserts and Tungsten accent stitching  
Available on SXT; Standard on GT, R/T and Scat Pack 392; Includes Scat Pack Bee logo on Scat Pack 392



Nappa leather-faced with perforated inserts – Black with Metallic Black accents and Tungsten accent stitching  
Available on SXT with Plus Group



Nappa leather-faced with Alcantara® suede bolsters and perforated inserts – Black with Tungsten accent stitching  
Available on GT with Plus Group; Available on R/T and Scat Pack 392 with Plus Group or Daytona Edition  
Note: Includes embroidered Scat Pack Bee logo on Scat Pack 392; Includes embroidered Daytona logo with Daytona Edition



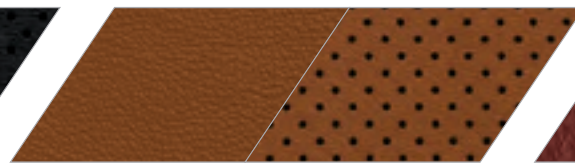
Nappa leather-faced with perforated Alcantara inserts – Black with Orange accent stitching  
Available on GT RWD and Scat Pack 392 with HEMI® Orange Package; Includes embroidered Dodge “//” Rhombus logo



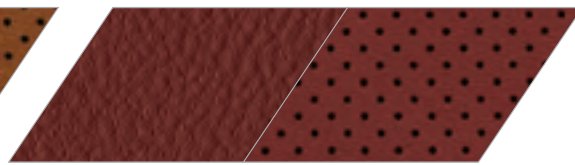
Nappa leather-faced with Alcantara suede bolsters and perforated inserts – Black / Ruby Red with Ruby Red accent stitching  
Available on Scat Pack 392 with Plus Group; Includes embroidered Scat Pack Bee logo



Laguna leather with perforated inserts – Black with Silver accent stitching  
Available on SRT Hellcat® Widebody, SRT Hellcat Redeye Widebody and SRT Hellcat Redeye Widebody Jailbreak; Includes embossed SRT Hellcat logo



Laguna leather with perforated inserts – Sepia with Silver accent stitching  
Available on SRT Hellcat Widebody and SRT Hellcat Redeye Widebody Jailbreak; Includes embossed SRT Hellcat logo



Laguna leather with perforated inserts – Demonic Red with Silver accent stitching  
Available on SRT Hellcat Widebody and SRT Hellcat Redeye Widebody Jailbreak; Includes embossed SRT Hellcat logo



Laguna leather with Alcantara suede bolsters and perforated inserts – Black with Silver accent stitching  
Available on SRT Hellcat Widebody with Alcantara Interior Package; Available on SRT Hellcat Redeye Widebody Jailbreak; Includes SRT Hellcat logo



Laguna leather with perforated inserts – Black / Hammerhead Grey  
Available on SRT Hellcat Redeye Widebody Jailbreak; Includes embossed SRT Hellcat logo

## EXTERIOR COLOUR CHOICES\*



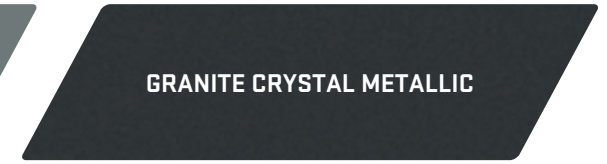
WHITE KNUCKLE



TRIPLE NICKEL



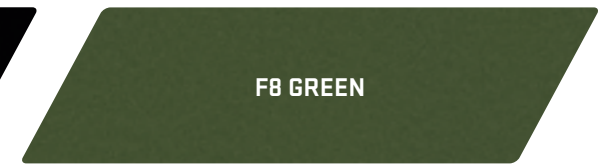
SMOKE SHOW



GRANITE CRYSTAL METALLIC



PITCH BLACK



F8 GREEN



SINAMON STICK



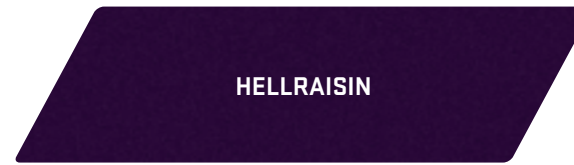
STINGER YELLOW



TORRED



GO MANGO



HELLRAISIN



OCTANE RED



FROSTBITE



INDIGO BLUE

\*All colours not available on all models. See your retailer for details.

## EXTERIOR STRIPE CHOICES



- 1 SATIN BLACK-PAINTED HOOD**
- 2 SATIN BLACK-PAINTED GRAPHICS PACKAGE**
- 3 DAYTONA GRAPHICS**
- 4 DUAL STRIPES SHOWN IN CARBON. ALSO AVAILABLE IN BLUE, SILVER, RED AND GUNMETAL**
- 5 HEMI<sup>®</sup> ORANGE STRIPE**

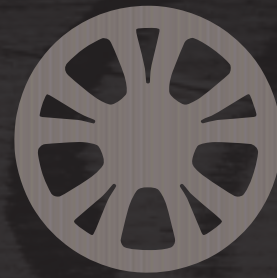
## WHEEL CHOICES



17 by 7-inch Fine Silver aluminum  
Standard on SXT RWD



20 by 8-inch Satin Carbon aluminum  
Standard on GT RWD;  
Available on SXT RWD with Plus Group



19 by 7.5-inch Satin Carbon aluminum  
Standard on SXT AWD



20 by 8-inch Satin Carbon aluminum  
Standard on GT AWD;  
Available on SXT AWD with Plus Group



20 by 8-inch Satin Carbon aluminum  
Standard on R/T;  
Available on GT RWD with Plus Group



20 by 8-inch Black Noise aluminum  
Available on SXT AWD and GT AWD  
with Blacktop Package



20 by 8-inch Black Noise aluminum  
Available on SXT RWD, GT RWD and R/T  
with Blacktop Package



20 by 9-inch Mid-Gloss Black aluminum  
Available on GT RWD with  
HEMI® Orange Package



20 by 8-inch machined-face aluminum  
with Granite pockets  
Available on R/T with Plus Group



20 by 9-inch Low-Gloss Granite aluminum  
Standard on Scat Pack 392;  
Available on R/T with Daytona Edition



20 by 9.5-inch Low-Gloss Black aluminum  
Available on Scat Pack 392  
with Daytona Edition



20 by 11-inch  
Carbon Black Warp-Speed aluminum  
Available on Scat Pack 392  
with HEMI Orange Package



20 by 11-inch Lightweight  
Carbon Black aluminum  
Standard on SRT Hellcat® Redeye  
Widebody Jailbreak



20 by 11-inch  
Brass Monkey forged aluminum  
Available on SRT Hellcat Widebody  
and SRT Hellcat Redeye Widebody Jailbreak



20 by 11-inch  
Lightweight Low-Gloss Granite aluminum  
Available on SRT Hellcat Redeye  
Widebody Jailbreak



20 by 11-inch Devil's Rim  
Low-Gloss Granite aluminum  
Standard on Scat Pack 392 Widebody;  
Available on SRT Hellcat Redeye Widebody Jailbreak



20 by 11-inch Satin Carbon  
Warp-Speed aluminum  
Available on SRT Hellcat Redeye  
Widebody Jailbreak



20 by 11-inch Carbon Black aluminum  
Standard on SRT Hellcat Widebody;  
Available on SRT Hellcat Redeye Widebody  
Jailbreak and Scat Pack 392 Widebody



20 by 11-inch Warp-Speed  
Low-Gloss Granite aluminum  
Available on SRT Hellcat Widebody and  
SRT Hellcat Redeye Widebody Jailbreak





ABOUT THIS CATALOGUE: Since the time of publishing, some of the information you'll find in this catalogue may have been updated. Ask your retailer for details. Some of the equipment shown or described throughout this catalogue is available at extra cost. Specifications, descriptions, illustrative materials and all competitive comparisons contained herein are as accurate as known at the time this publication was approved for printing. FCA Canada Inc. reserves the right to make changes at any time without notice and without incurring obligation. For the price of the model with the equipment you desire, or verification of specifications contained herein, see your Chrysler, Jeep, Dodge, Ram, FIAT and SRT retailer. ©2022 FCA Canada Inc. All Rights Reserved. Chrysler, Dodge, Jeep, Ram, SRT, 392 HEMI, Bee logo, Blacktop, Charger, HEMI, Mopar, Mopar Vehicle Protection, Park-Sense, ParkView, R/T, Scat Pack, SRT Hellcat, the SRT Hellcat design, SRT Power Chiller, SXT, TorqueFlite and Uconnect are registered trademarks, and Pentastar is a trademark of FCA US LLC.

Alcantara is a registered trademark of Alcantara S.p.A. Bilstein is a registered trademark of August-Bilstein GmbH & Co. Bluetooth is a registered trademark of Bluetooth SIG, Inc. Brembo is a registered trademark of Brembo SpA. Cummins is a registered trademark of Cummins, Inc. FIAT is a registered trademark of FCA Group Marketing S.p.A., used under licence by FCA US LLC. Facebook and logo are registered trademarks of Facebook, Inc. Goodyear is a registered trademark of The Goodyear Tire & Rubber Company. Google, Android, Android Auto, YouTube, and other related marks and logos are trademarks of Google LLC. All rights reserved. Instagram is a registered trademark of Instagram, Inc. iPhone and Siri are registered trademarks and Apple CarPlay is a trademark of Apple Inc. Michelin is a registered trademark of Michelin North America, Inc. Pirelli is a registered trademark and P Zero is a trademark of Pirelli & C.S.p.A. ©2022 SiriusXM Canada Inc. "SiriusXM," SiriusXM Guardian, the SiriusXM logo, channel names and logos are trademarks of SiriusXM Radio Inc. and are used under licence. The Twitter logo is a service mark of Twitter, Inc.

WARRANTIES: 2022 Chrysler, Jeep, Dodge and Ram vehicles are backed by a 5-Year or 100,000-Kilometre fully transferable Powertrain Limited Warranty\* with \$0 deductible plus 24-hour roadside assistance! SRT vehicles are backed by a 3-Year or 60,000-Kilometre fully transferable Powertrain Limited Warranty\* with \$0 deductible plus 24-hour roadside assistance. Basic Warranty coverage is for 3 Years or 60,000 Kilometres.\* Rust-through coverage on all body sheet metal is for 3 years. The Cummins Turbo Diesel engine is protected by a separate Limited Warranty, covering the engine for 5 Years or 160,000 Kilometres.\* The EcoDiesel engine is backed by a 5-Year or 100,000-Kilometre fully transferable Powertrain Limited Warranty\* with \$0 deductible plus 24-hour roadside assistance.

\*Whichever comes first. Some conditions may apply. †The 5-Year/100,000-Kilometre Powertrain Limited Warranty does not apply to vehicles sold for certain commercial uses. See your retailer for full details.

MOPAR VEHICLE PROTECTION: FCA Canada Inc. has a vested interest in your satisfaction and owner experience with your new vehicle. Mopar Vehicle Protection offers extended service and maintenance plans to help ensure you'll enjoy your vehicle for many years down the road – for just pennies a day. For more information on comprehensive vehicle coverage, see your local Chrysler, Jeep, Dodge and Ram retailer or call 800-465-2001.

DISCLAIMERS 1. No system can repeal the laws of physics or overcome careless driving actions. Performance is limited by available traction, which snow, ice and other conditions can affect. When the warning lamp flashes, the driver needs to use less throttle and adapt speed and driving behaviour to prevailing road conditions. 2. Drive responsibly. Always obey the rules of the road. 3. Based on IHS Markit Automotive Canadian New Vehicle Total Registrations for combined years CY2016 to CYTD September 2021. 4. Based on *EnerGuide* fuel consumption ratings and fuel tank options. Government of Canada test methods used. Your actual fuel consumption will vary based on driving habits and other factors. Ask your retailer for the *EnerGuide* information. 7.8L / 100 km highway and 12.4 /100 km city on Charger RWD models equipped with the 3.6L engine and 8-speed automatic transmission. 5. If you decide to continue service after your trial, the subscription plan you choose will continue and you will be charged according to your chosen payment method at then-current rates unless you cancel your services. Fees and taxes apply. Some services and features are subject to device capabilities and location availability. Please see the SiriusXM Customer Agreement at [www.siriusxm.ca/terms](http://www.siriusxm.ca/terms) for complete terms and how to cancel, which includes calling SiriusXM at 1-888-539-7474. All fees and programming are subject to change, provided that we will notify you in advance of any price change. We use personal information in accordance with our Privacy Policy, available at [www.siriusxm.ca/privacy](http://www.siriusxm.ca/privacy). 6. All SiriusXM Guardian equipped vehicles come with a 12-month complimentary trial effective on the date of purchase or lease of a new vehicle. Enrolment in the trial is required to receive service. Upon expiration of the trial period, purchase of a subscription is required to continue SiriusXM Guardian. SiriusXM Guardian is available only on equipped vehicles purchased within the United States, Puerto Rico and Canada. Services can only be used where cellular coverage is available. See Uconnect and SiriusXM Guardian Terms of Service for complete service limitations. You are responsible for using remote features in accordance with any laws, rules or ordinances in effect in your vehicle's location. 7. Driving while distracted can result in loss of vehicle control. Only use mobile phones and other devices, even with voice controls, when it is safe to do so. Requires compatible iPhone. See retailer for phone compatibility. Data plan rates apply. To use Android Auto on your phone screen, you'll need an Android phone running 6.0 or higher and the Android Auto App. 8. Requires an iPhone with Siri. Certain features are not available while the vehicle is in motion. iPhone must be within active cellular range. Customer's existing iPhone data rates apply to Internet-supported features. 9. This is a driver convenience system, not a substitute for active driver involvement. The driver must remain aware of his or her surroundings and be prepared to take corrective action to avoid collisions.

FOR FULL SPECIFICATION DETAILS // VISIT [DODGE.CA](http://DODGE.CA)



LIKE US ON:

[facebook.com/dodgecanada](https://www.facebook.com/dodgecanada)



CHECK US OUT ON:

[instagram.com/dodgecanada](https://www.instagram.com/dodgecanada)



LIKE US ON:

[twitter.com/dodge\\_canada](https://twitter.com/dodge_canada)



SIGN UP FOR UPDATES AT:

[dodge.ca/en/signup](http://dodge.ca/en/signup)

