

THE ALL NEW HOLDEN

# SUBURBAN V8



**HOLDEN**

*There's nothing quite like a Holden.*



# The largest 4WD on the face of the planet.\*

From General Motors, the largest car company in the world, comes the largest mass produced four wheel drive in the world.\*

Introducing the Holden Suburban. With uncompromising power, ruggedness and strength. Plus uncompromising comfort and an unmistakable presence and style.

No other four wheel drive even comes close with a combination of size, passenger and cargo space, big truck-like strength and the choice of V8 Petrol 1500 Series or V8 Turbo Diesel 2500 Series.

And its ability to tow up to an incredible 3400kg,\*\* makes Suburban 2500 the ultimate towing machine.

Inside there's room to comfortably seat up to nine people, as well as plenty of space for their luggage.

With its range of unmatched features the Holden Suburban is big on comfort. Sit back and relax in the space and power that comes from leadership. Because the Holden Suburban is sourced from Chevrolet, which has been a leader in this class of vehicle in the USA for over 60 years.

When there's hard work to be done, make no mistake – bigger is better. And there's none bigger than the Holden Suburban. So it's perfectly suited to the needs of Australian motorists who want to travel long distances in comfort.



\*In terms of shadow area Suburban is the largest mass produced 4WD in the world. \*\*Depending on State towing regulations and tow bar design.



# An American classic of epic proportions.

With its Chevrolet USA heritage extending back over 60 years, the new Holden Suburban is a uniquely large 4WD.

In fact, you'll need to stand back to fully appreciate the size of the Holden Suburban.

It's over 5.5 metres long, 1.9 metres wide and 1.8 metres high. And because of Suburban's long wheelbase, the ride is smooth and comfortable.

In fact, every seat has full leg room via the provision of foot wells in all three rows of seats.

Suburban is a thoughtful design as well. The lower centre of gravity allows for superb roadholding and handling. It also means that getting in

and out is easy for passengers.

Importantly, Suburban is not just big for the sake of being big. Because of its size and capacity, Suburban can do things other four wheel drives can't. Like transport up to nine people and their luggage, as well as tow a trailer. Normally that would be a job for at least two vehicles.

It's also reassuring to know that these vehicles have been designed and factory engineered by GM for use as right hand drive vehicles.

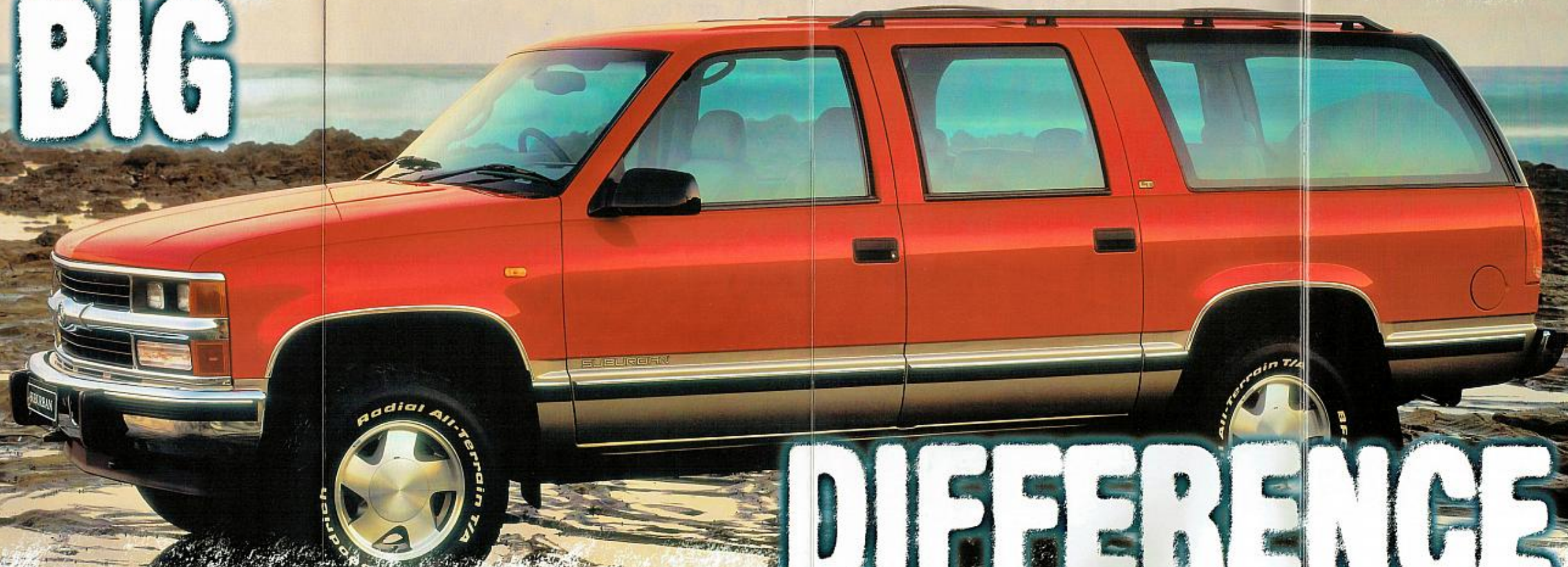
When you compare the Suburban with any other vehicle in the class, you'll see that nothing else even comes near it.



*America's most appealing full-size 4WD - The Chevrolet Suburban*



# BIG



# DIFFERENCE





# Big V8 Petrol or V8 Turbo Diesel Power.

The Holden Suburban comes with two power/drivetrain options – V8 Petrol or V8 Turbo Diesel.

Each engine is matched to drivetrain components designed for their different applications.

The petrol engine 1500 Suburban models feature a heavy duty drivetrain and have a Gross Vehicle Mass (GVM) of 3311kg.

The diesel engine 2500 Suburbans feature super heavy duty transmission and axles, a wider wheel track, a heavy duty braking system, 8-stud steel wheels and heavy duty suspension, all contributing to a GVM of 3900kg.

The Chevrolet VORTEC 5.7 litre V8 petrol engine has a power output of 190kW (255bhp) @ 4600rpm and torque of 447Nm @ 2800rpm. This is

a very smooth engine that delivers its power effortlessly. Sequential fuel injection provides a high level of performance, resulting in precise fuel delivery to each cylinder. Also, for those that need it, the petrol engine is compatible for LP gas conversion.

The 6.5 litre Turbo Diesel V8 produces 145kW (195bhp) of power at 3400rpm and a massive 583Nm of torque at a low 1800rpm. Both

engines have proved so dependable that the first major service, apart from standard grease and oil changes, is scheduled for 160,000km.

Each engine is matched to a four speed overdrive, electronically controlled turbo hydramatic automatic transmission, for best overall performance and delivery of excellent fuel efficiency.

Both petrol and turbo diesel variants feature the patented INSTA-TRAC 4WD shift system. INSTA-TRAC allows shifting from 2WD to 4WD High at the push of a button while travelling. 4WD Low also provides pulling power for rugged conditions, steep gradients and heavy towing.

That's big performance.



1500 LT



2500 LS



# From the ground up it's unlike any other 4WD.

Every component has been manufactured to do the hard work, for a long time, under the toughest conditions.

## STEEL LADDER-TYPE FRAME

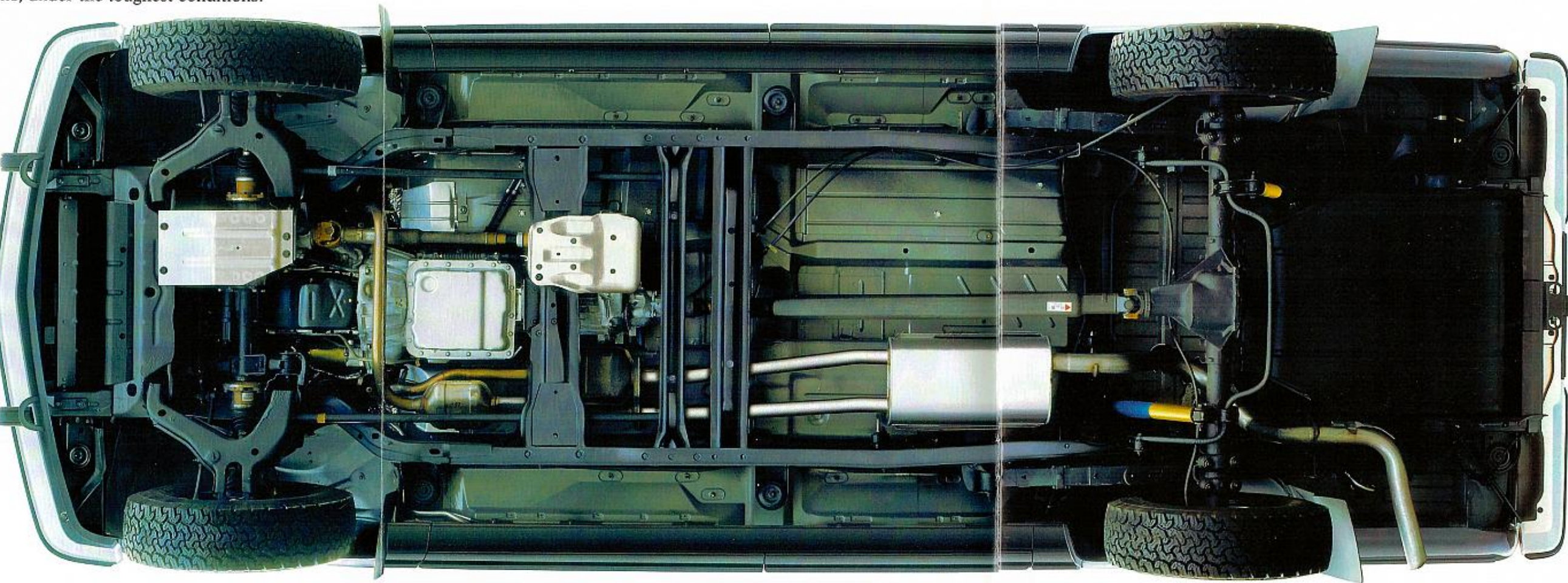
Exceptional strength and rigidity are provided by a steel ladder-type frame with boxed front sections that support the engine front suspension and drivetrain. The deep C-channel rails are cross-braced for maximum strength, while two front tow hooks are standard equipment.

This strength extends into passenger safety as well, with driver's side airbag standard. A reinforced safety cage helps protect the passenger compartment while the Suburban's controlled crush zones are designed to help absorb energy in frontal or rear collisions. Steel side door beams give added protection from side impacts.

The Anti-lock Braking System (ABS) helps to maintain control when braking on slippery surfaces.

With high tare weight as well as a class-leading GVM rating, Suburban has unmatched towing capabilities where State regulations are dependent on vehicle weight. Depending on State regulations and tow bar design, Suburban can tow up to 3400kg.\*

Even the big 159 litre fuel tank will make a difference to how often you need to refuel on a long trip.



### Independent front suspension

Suburban features rugged and reliable independent torsion bar front suspension that helps keep the front wheels virtually straight up and down at all times, for a stable ride, precise control and better steering over rough surfaces.

### Engineered for right hand drive

All Australian delivery Suburbans have been factory-built by GM for right hand drive.

### INSTA-TRAC 4WD System

With the push of a button the INSTA-TRAC 4WD system allows the driver to shift between two wheel drive and four wheel drive high, "on the fly."

### Corrosion resistant exterior panels

Exterior body panels (except the roof) are made of two-sided galvanized steel that helps virtually eliminate corrosion on the outside surface (resulting from scratches and chips), and protects from rust through corrosion originating on the inside surface.

### Two-stage multi-leaf rear springs

The specially designed second stage springs engage as load weight increases to provide additional support without sacrificing ride quality. This and torsion gas shock absorbers, front and rear, ensure a pleasant ride for all.

### Long range fuel tank

With its standard 159 litre fuel tank, the Suburban is designed for long distance travel between fuel stops. The 5.7 litre VORTEC V8 petrol engine is also suitable for operating on LP gas.

### Built for off-road driving

Suburban also has a Limited Slip Rear Differential and BF Goodrich heavy duty tires with triple guard side walls for greater protection against sharp objects and rough terrain. Underbody plates protect the front differential, transfer case and fuel tank against off-road terrain damage.

### Standard tow bar

Depending on State regulations, Suburban 1500 petrol can tow up to 2720kg, and the 2500 Diesel up to a massive 3400kg.

### Anti-lock Braking System

Standard on all models, the ABS complements large ventilated front discs and rear drums filling 16" wheels.

### Wax-dipped frame

To enhance long-lasting durability, the Suburban corrosion protection process includes dipping the entire frame in a special wax during assembly.

### Steel ladder-type frame

Exceptional strength and rigidity are provided by a steel ladder-type frame with boxed front sections that help support the engine and front suspension.

### Lasting good looks

A standard basecoat and advanced clear coat paint process resists fading and provides a high gloss shine for long-lasting exterior beauty. Body side protective moldings and steel hangers front and rear also increase body protection.

### Drop centre frame design

The use of a drop centre frame design helps provide a low step-in height, whilst also maintaining excellent ground clearance. The large 8140mm wheelbase ensures a smoother ride on all surfaces.

### Corrosion resistant steel exhaust system

Made of corrosion resistant steel, the Suburban muffler and all pipes from the catalytic converter back are designed to provide long-lasting durability.





## The most versatile interior of any 4WD.

Suburban offers uncompromised seating for up to nine people and an unmatched choice of seating/cargo options.\*

With the full complement of seating for nine,\* there's still more than 1.3 cubic metres of cargo space. Not to mention Suburban's excellent towing capacity.

With no third row seat and the second row seat upright (carrying the

driver and up to five passengers) there's still over 2.7 cubic metres of cargo capacity.

Or with no third row seat, and the second row seat folded forward, there's more than 4.23 cubic metres of cargo space – more than what is

available in some commercial vans. And with non-slip rear step bumper standard, loading up is easy.

So if you want a four wheel drive big enough to carry a full crew and their gear, climb aboard the new Suburban.

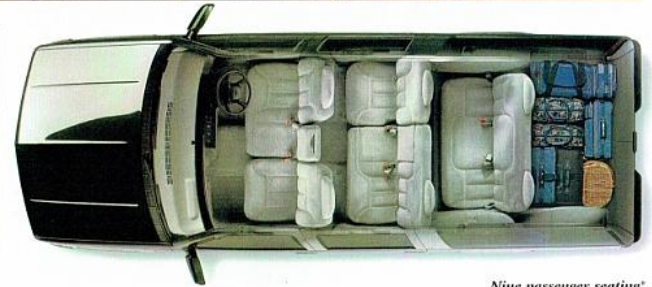


Up to 4.23 cubic metres of storage



### Easy entry for rear passengers

The versatile centre row 60/40 split folding seat on all models includes an easy entry feature that allows the right hand portion to slide forward, helping clear the way for rear passengers. The rear seat features a footwell for added space and passenger comfort.



### Nine passenger seating\*

A front row 3-person bench seat on Suburban LS and Suburban provide full size room for up to nine people as well as a luggage capacity most four wheel drives would struggle to fit behind the second row of seats.





2500 LT neutral leather interior

## A big difference in comfort.

Suburban is as luxurious as it is big, with a host of features you would expect from a prestige passenger vehicle.

The first thing everyone will notice is the space – there's plenty of shoulder room, leg room and head room. The big seats feature high quality cloth trim, with the added luxury of full leather trim

standard in the Suburban LT model.

LT models feature electric front seat adjustment with a six function control located on both front seats. As well as electric cushion lumbar



**Front and rear CFC free, air conditioning**  
All models feature front and rear air conditioning with separate controls for the convenience of passengers and a total of 13 outlets throughout the vehicle.

support for driver and front passenger.

### FRONT AND REAR AIR CONDITIONING

All models also feature dual air conditioning systems with separate



**Overhead console**  
Along with the high back front bucket seats on the 1500 LS and LT, and 2500 LT models, there is also an overhead console with reading lights and storage for sunglasses and other items.

controls for rear passengers and tinted windows to help keep the interior cool in Australia's harsh climate.

There is a host of convenience features, like fold-out cup holders,



**Centre row console**  
The split folding centre row bench seat features a convenient pull-down centre armrest with cup holders and tissue pack holder.

map holders, courtesy lamps, auto dimming rear view mirror, compass readout and more.

The Australian Eurovox AM/FM stereo radio/cassette is security coded.



**Console convenience**  
Standard on 1500 LS and LT and 2500 LT are high back front bucket seats which include a multi function centre console with pivoting writing surface, map strap and your choice of drop-in dual cupholders and cassette/CD storage.

'Suburban' passengers enjoy a four speaker sound system, while in the LS and LT models passengers enjoy their surround sound reproduction through six speakers.





## Experience unique driving control.

Even though it's big, the Holden Suburban is remarkably easy to drive.

Firstly there's a tilt-adjustable steering wheel to ensure the most comfortable driving position.

Power steering facilitates easy parking, whilst still maintaining precise control at highway speeds.

Cruise control is standard on all

models, while added safety is ensured with a driver's airbag. High seating position with height adjustable driver's seat allows for excellent visibility in traffic.

The second generation On-Board Diagnostics (OBD II) constantly monitors the engine and transmission

and alerts the driver to service and maintenance needs.

A central locking system is standard on all models, with remote locking also on LS and LT models.

The Holden Suburban has brains as well as brawn.



### Standard four wheel anti-lock braking system

Standard on all Suburban models, four wheel ABS is designed to help you keep control by reducing wheel lockup when braking on slippery surfaces.



### Electric side mirrors

LS and LT models have folding, electric side mirrors standard for greater convenience.



### Auto dimming rear view mirror

For enhanced driver safety an electro-chronic mirror automatically dims to reduce glare. It also features an 8 point electronic compass.





2500 LS 9 seat, grey cloth interior





Suburban 2500 LS 6.5 litre Turbo Diesel V8

## Not just badged for Australia.

Holden took a proven American heritage and tested it extensively downunder before carefully specifying it for Australia.

The Suburban was originally developed by Chevrolet in America, where it's been the best-selling automotive brand for over 60 years.

The Suburban is not converted to left hand drive, but has been factory

developed and built for right hand drive by General Motors. The suspension has been modified for Australian conditions using Bilstein gas shock absorbers to be better able to cope with Australian roads.

BF Goodrich All-Terrain tyres are fitted to all models for the best mix of off-road traction and ride comfort.

Heavy duty air cleaners, electrics, alternators and batteries (dual batteries on diesel) are all fitted to Australian

specification, while triple door seals give added protection against fine dust.

Long distance durability testing was carried out on the right hand drive components. The dashboard and controls were all developed for right hand drive. Even Australian made Eurovox radios are shipped across the Pacific to be fitted to the Holden Suburban during production.

The result is that the Suburban

incorporates the full strength and experience of General Motors whilst being uniquely specified by our engineers for Australian conditions.

### A DIFFERENCE FROM THE START

Suburban is only available from selected specialist Holden Dealers who offer a complete service, repair and spare parts support system.

Whilst major services must be

carried out at one of the strategically located Suburban Specialist Dealers, regular services can be carried out at any of over 350 Holden Dealers throughout Australia.



# A model level for every need.

Both petrol and diesel engine Suburbans offer three model variants.

These are 'Suburban', LS and LT.

All variants feature a 60/40 split fold second row seat and a fully removable third row seat.

'Suburban' and the diesel engine LS model feature a split fold front bench seat suitable for three people

	1500 Petrol V8			2500 Turbo Diesel V8		
	'Suburban'	LS	LT	'Suburban'	LS	LT
Front seat (Bench)	•			•	•	
Front high back, recliner bucket seats		•	•			•
Seating surfaces	Cloth	Cloth	Leather	Cloth	Cloth	Leather
Second row, 60/40 split	•	•	•	•	•	•
Third row removable bench	•	•	•	•	•	•
Seating capacity	9	8	8	9	9	8
Rear door design	BD	BD	H	BD	BD	H

BD = Barn door. H = Horizontal tailgate.

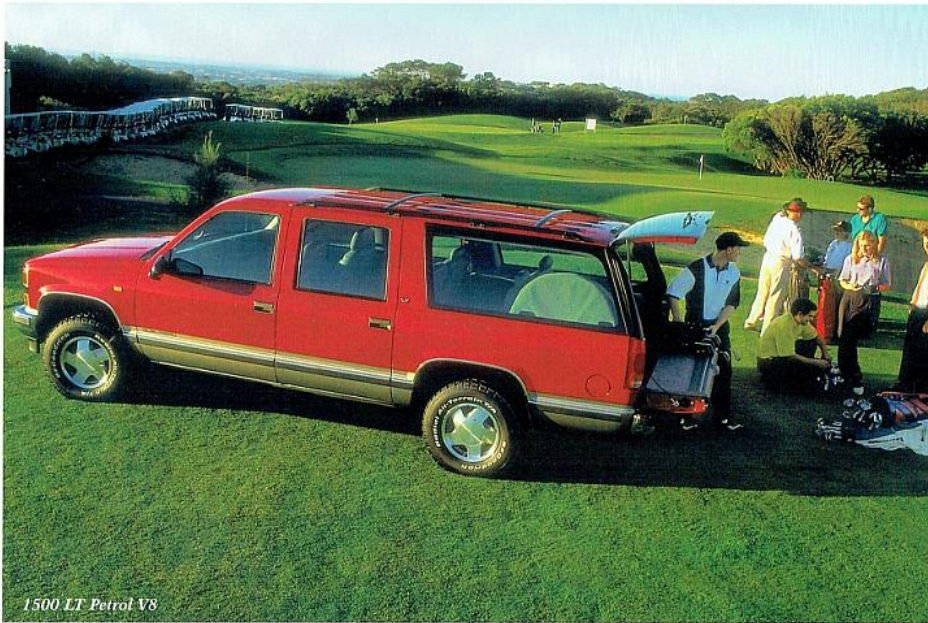
with a centre seat which doubles as an armrest when not in use. The petrol engine LS and the LT models feature front bucket seats.

In addition to the features of the 'Suburban', the LS and LT models have standard features which enhance driving comfort and convenience. The leather trim steering wheel offers more comfortable grip. Power windows add to driver and passenger convenience while an integrated roof rack provides more carrying space.

The Suburban LT provides the ultimate in big four wheel drive luxury with full leather trim seats, two tone paint, power adjustable front seats and a tailgate/liftglass rear entry.



2500 Suburban Turbo Diesel V8



1500 LT Petrol V8



2500 LS Turbo Diesel V8



# SUBURBAN COLOURS & TRIM



*Black*



*Emerald Green Metallic*



*Indigo Blue Metallic*



*Summit White*



# SUBURBAN COLOURS & TRIM



*Pewter Metallic*



*Dark Toreador Red Metallic*



*Victory Red/Pewter Metallic\**

\*Above shows two-tone paint scheme - standard on LT models.



*Reclining high-back bucket seat shown in Grey Custom Leather standard on LT model (inset Neutral available LT 2500 only)*



*Front reclining three passenger 60/40 split bench seat shown in Grey Custom Cloth standard on 'Suburban' and LS models<sup>1</sup>*

<sup>1</sup>LS petrol has high back front reclining bucket seats



# The smartest way to own a new Suburban.

Holden and Holden Financial Services offer you the most extensive range of options designed to assist you in owning a new Suburban more affordably.

## HOLDEN FINANCIAL SERVICES SMART CHOICES

Small business Suburban buyers have the option of SmartDrive which can provide many of the tax, maintenance and service advantages normally only enjoyed by large fleet buyers. Now that's smart! Suburban fleet buyers enjoy access to HNL Fleet Services<sup>1</sup> which offer a wide range of fleet leasing, management and financial services to approved customers. Consult your Holden Dealer or HNL Fleet services direct, toll-free on 1800 226 772.

For private buyers Holden SmartBuy puts the keys to a new Suburban in your hand and keeps more dollars in your pocket. Low monthly repayments, with a choice of 1, 2 or 3 year terms, give you more affordable and flexible finance options.

SmartBuy also has the extra advantage of a guaranteed minimum buyback price.

At the end of the agreement, you can hand back your Suburban, pay it out for the agreed value or refinance it. The choice is yours.\*

Free-call the SmartBuy Hotline for more details on 1800 642 000. For the annual percentage rate applicable see your local Holden Dealer.

## THE GM CARD – A GREAT DEAL MORE REWARDING

Simply by putting your everyday expenses like bills and shopping on your GM Visa or GM MasterCard, you'll be saving towards your next new Holden.<sup>6</sup> For every \$20 you spend on credit purchases Holden will put \$1 towards your next new Suburban.

You can swipe thousands of dollars off the best price you can

negotiate on a new Suburban.

The Rebate can be transferred to other eligible members of your family. So even if you're a fleet buyer you can save hundreds, even thousands off a second new car.

The GM Card offers no annual fee in the first year (a fee, currently \$18, applies in subsequent years), and a competitive interest rate with up to 55 days interest free.<sup>6</sup>

To apply, visit any Westpac/Challenge branch, Holden Dealer, or call The GM Card 24 hour Customer Service Line on 131 200.

## THE PACKAGE WOULDN'T BE COMPLETE WITHOUT EXTRA PEACE OF MIND

*We're with you all the way.*

Your new Holden Suburban comes with the added peace of mind of the nationwide support of Holden and its Dealer network.



## 3 YEAR OR 100,000km NEW VEHICLE WARRANTY

Every Holden Suburban comes with a 3 year or 100,000 km New Vehicle Warranty, whichever comes first.<sup>7</sup>



This factory-backed bumper to bumper warranty covers everything from the engine, transmission, clutch, interior and exterior components including corrosion.<sup>8</sup>

An Extended New Vehicle Warranty is also available.

## The reassurance of 3 year/24 hour Holden roadside assistance.\*\*

Peace of mind is also provided in the form of 3 year/24 hour Holden Roadside Ultra Assist. One of Australia's most comprehensive assistance packages, it is complimentary for the full term of your new Holden Suburban warranty.

Holden Roadside Ultra Assist provides assistance with flat tyres, lock out, unexpected mechanical

problems, accommodation, car rental, medical advice and referral in case of accident or vehicle theft.

So, in the event of the unexpected happening, from your keys being locked in the car to mechanical and accident advice, help is readily available by simply calling the toll-free number 1800 817 100.

This service is delivered from over 900 centres by Assist Australia and the combined resources of the Australian motoring organisations.

## Extensive national dealer support.

With over 350 dealers strategically located nationwide, the Holden service network is the largest in the country. Regular servicing can be carried out at any Holden Dealer with Specialist Suburban Dealers fully trained and authorised to perform major services.<sup>11</sup>

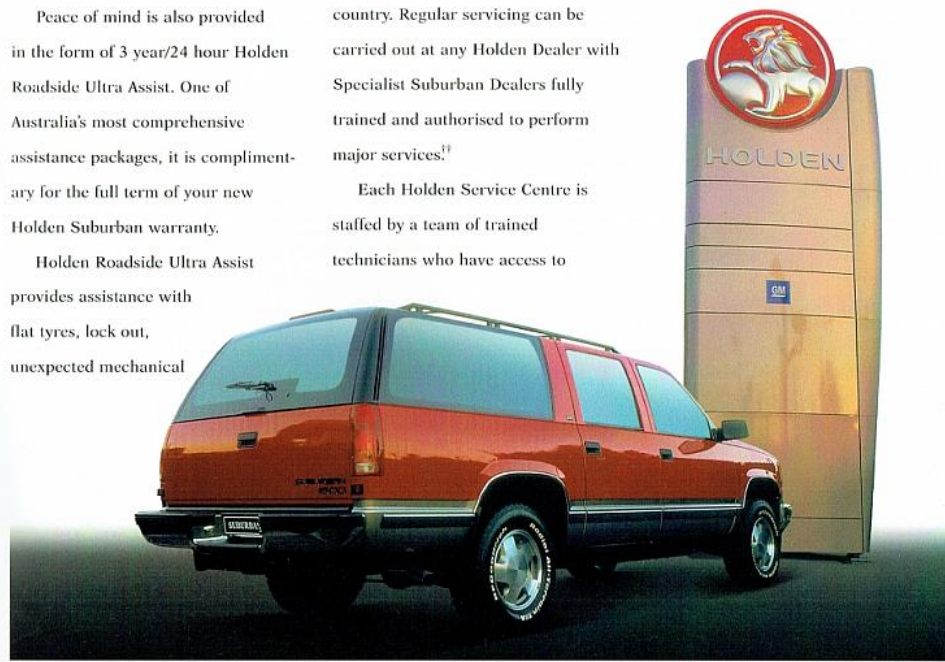
Each Holden Service Centre is staffed by a team of trained technicians who have access to

regular factory training bringing them up to speed on the latest technology.

## CHOOSE THE RIGHT SUBURBAN WITH INROADS

To make choosing the right model easier, your participating Holden Dealer can arrange a free consultation using our interactive vehicle specification system – Inroads.

Inroads has been designed to quickly answer your most pointed questions, e.g. What are the superior qualities of the Suburban? What will the effect be if I don't have brakes on my trailer? What is the cost of servicing over 3, 5 or 7 years?



HNL Fleet Services is a registered business name of Holden National Leasing Ltd. A.C.N. 008 589 562. \*Fees and charges apply. Subject to credit approval and current terms and conditions. A disposal fee of \$350 applies, plus charges for excess wear or excess kilometres may also apply. #Subject to The GM Card from Holden Program Rebate Rules, which sales for which a fleet allowance is paid are not eligible for GM Card Rebate. Full details of terms and conditions are available on request from your local Westpac branch. The interest rate as of Sep. 1 1997 is 15.4% p.a. Fees and charges may apply. †Conditions apply. See your Holden Dealer for details. \*\*Refer to owner's manual or local dealer for full terms and conditions. \*\*\*For full terms and conditions regarding Holden Roadside Assistance please refer to our customer booklet available from our Customer Assistance centres. Holden Roadside Assistance is not always available in remote areas. ††Major services must be carried out by Suburban Specialist Dealers.



## SPECIFICATIONS

	1500			2500		
	4 DOOR 4X4 WAGON			4 DOOR 4X4 WAGON		
Body Configuration	4 DOOR 4X4 WAGON			4 DOOR 4X4 WAGON		
Model	Suburban	LS	LT	Suburban	LS	LT
Ordering Code	8KK35-522	8KK35-722	8KK35-822	8KL35-542	8KL35-742	8KL35-842
Engine Configuration	VORTEC 5.7L V8 Petrol			GM 6.5L V8 Turbo Diesel		
Bore & stroke (mm)	101.6 x 88.4			103.0 x 97.0		
Compression ratio	9.4:1			21.5:1		
Valves	two per cylinder			two per cylinder		
Lifters	Hydraulic roller			Hydraulic roller		
Cam drive	Chain			Chain		
Fuel/Air Intake	Sequential Port Fuel Injection			Indirect Electronic Fuel Injection		
Peak Power	190 kW (255bhp) @ 3600rpm			145 kW (195bhp) @ 3400rpm		
Peak Torque	447Nm @ 2800rpm			583Nm @ 1800rpm		
Transmission	4L60-E electronically controlled, Turbo Hydramatic, four speed automatic with overdrive			Heavy duty 4L80-E electronically controlled, Turbo Hydramatic, four speed automatic with overdrive		
4WD System	On demand INSTA-TRAC with "shift on the fly" 2WD - 4WD High - 2WD					
Transmission Ratios (Petrol)	1st gear 3.06	2nd gear 1.63	3rd gear 1.00	4th gear 0.70	Reverse 2.29	
(Diesel)	2.48	1.48	1.00	0.75	2.08	
Clutch/Converter	Torque Converter Clutch					
Transfer Gear Ratios	Low 2.72:1, High 1.00:1					
Final Drive Ratio	3.73					
Axes	Front: Semi-floating Hypoid. Capacity 1780kg Rear: Semi-floating Hypoid with Limited Slip Differential. Capacity 2759kg			Front: Semi-floating Hypoid. Capacity 1927kg Rear: Semi-floating Hypoid with Limited Slip Differential. Capacity 3400kg		
Steering	Standard Power Steering					
Suspension	Front: Independent Short-Arm with adjustable torsion bars and stabiliser bar. 46mm pre-laded Bilstein gas shock absorbers. Rear: Semi-elliptic two-stage heavy duty multileaf springs and stabiliser bar. 46mm pre-laded Bilstein gas shock absorbers					
Brakes	Power-assisted, front disc, rear drum, four-wheel anti-lock. Includes brake/transmission interlock					
Size	294mm disc, 283mm drum			317mm disc, 330mm drum		
Wheels	16" Steel Rim	16" Aluminium Alloy		Heavy duty eight stud 16" Steel Rim with dress ring		
Tyres	BF Goodrich All Terrain LT245/75 R16E					
Wheelbase (mm)	3340					
Track (mm)	Front: 1628 Rear: 1620		Front: 1742 Rear: 1652			
Turning Circle (m) Kerb to kerb	13.6			13.7		
Frame	All-welded ladder-type, channel design and boxed front-end section					
GVM (kg)	3311			3900		
Kerb Mass (with 10 litres of fuel) (kg)	2540			2942		
Payload (kg)	771			958		
Maximum Towing Capacity (kg)*	2720			3400		
Breakover (degrees)	17			18		
Approach Angle (degrees)	31			32		
Departure Angle (degrees)	21			22		
<b>Dimensions (mm) - Exterior</b>						
Overall Length	5575					
Width	1948					
Height	1854			1895		
<b>Interior</b>						
Headroom (front/mid/rear)	1013/988/962					
Legroom (front/mid/rear)	1045/919/914					
Shoulder Room (front/mid/rear)	1651/1651/1633					
Hip Room (front/mid/rear)	1516/1531/1512					
Cargo Volume - max. (cu m)	4.23(cu metres)					
Fuel Tank (litres)	159					
Service Intervals	Basic grease and oil change services at 10,000km intervals. First major service after 160,000km					

\*Subject to State Regulations and tow bar design.

## FEATURES

EXTERIOR	SUBURBAN			LS	LT
	Air dries, dark argent				
1500	\$	\$	\$		
2500	-	-	-		
Body side mouldings, black with bright trim	\$	\$	\$		
Bumper					
front - chrome with black impact strip with rear step - chrome with black impact strip	\$	\$	\$		
rear step - chrome with black impact strip	\$	\$	\$		
Bumper guards, front	\$	\$	\$		
Doors, rear cargo					
50/50 panel type	\$	\$	-		
horizontal drop end gate with lift up glass	-	-	\$		
Luggage carrier, roof mounted, painted black	-	\$	\$		
Mirrors, exterior - black	\$	-	-		
electric glass plane adjustment, black, manual fold-away	-	\$	\$		
Radiator grille, chrome	\$	\$	\$		
Shield package, engine, front differential, transfer case	\$	\$	\$		
Spare wheel, tyre and jack (internally mounted)	\$	\$	\$		
low hooks, two front	\$	\$	\$		
loadbar, heavy duty including tongue	\$	\$	\$		
Wheel opening flares, diesel 2500 models only	\$	\$	\$		
Wheels, 1500 models					
16" steel rim	\$	-	-		
16" aluminium alloy	-	\$	\$		
Wheels, 2500 models					
16" steel rim with dress ring	\$	\$	\$		
<b>CONTROLS, INSTRUMENTS</b>					
Automatic transmission with shift indicator	\$	\$	\$		
Cruise control	\$	\$	\$		
Headlamp on reminder	\$	\$	\$		
Instruments - speedometer, odometer, trip odometer, fuel level, voltmeter, engine temperature, oil pressure and tachometer	\$	\$	\$		
Locking system - power door locks, includes rear lock/unlock switch for all doors, mounted on inside RH rear pillar	\$	\$	\$		
locking system - Remote Keyless Entry	-	\$	\$		
locking system - single two-sided key for ignition and all doors (and LT model tailgate)	\$	\$	\$		
Power steering	\$	\$	\$		
Power windows	-	\$	\$		
Powertrain Control Module (PCM)	\$	\$	\$		
Rear window demister/washer/wiper	\$	\$	\$		
Rear end gate electric remote release	-	-	\$		
Rearview mirror, light sensitive, with compass	\$	\$	\$		
RH adjustable steering column	\$	\$	\$		
transfer case with electronic shift (2WD/4WD HIGH/2WD)	\$	\$	\$		
<b>LIGHTING</b>					
Courtesy lamps - front floor well area, additay, glovebox	\$	\$	\$		
Dual composite halogen headlamps	\$	\$	\$		
Passenger dome light with time delay and rear cargo dome light	\$	\$	\$		
Underhood Lamp	-	\$	\$		
<b>SOUND SYSTEM</b>					
Antenna - fixed fiberglass	\$	\$	\$		
Radio/cassette - Dynamic AM/FM stereo, CD compatible, security coded with four speakers	\$	-	-		
with six speakers	-	\$	\$		

S = Standard feature.

SEATS AND ASSOCIATED EQUIPMENT	SUBURBAN			LS	LT
	Front - reclining three-passenger 60/40 split-bench, wide fold-down centre armrest/storage compartment with seating surface and map strap on lid				
1500 models	\$	-	-		
2500 models	\$	\$	-		
Front - reclining bucket seats, high back, direct-pusher					
1500 model with multi-feature centre console with protruding seating surface; overhead console with reading lights and storage; front floor console	-	\$	\$		
1500 and 2500 models with six-way power adjuster; multi-feature centre console with protruding seating surface; overhead console with reading lights and storage; front floor console	-	-	\$		
Second row, 60/40, folding bench seat, wide fold-down centre armrest with cup holders and a tissue packet holder	\$	\$	\$		
Third row bench seat, fully reclinable	\$	\$	\$		
hmi					
custom cloth leather	\$	\$	-		
-	-	-	\$		
<b>CABIN COMFORT</b>					
Air conditioning, individual front and rear systems, with individual controls	\$	\$	\$		
Cup holders, dual slide-out in dash	\$	\$	\$		
Floor covering					
full colour-keyed carpeting with removable vinyl colour-keyed front and rear floor mats	\$	\$	\$		
Glass, Solar-Ray light tinted all windows	\$	\$	\$		
Passenger assist handles	\$	\$	\$		
Scotchgard protector on carpeting, cloth seats and cloth door trim panels	\$	\$	\$		
Steering wheel					
sanitized leather	\$	-	-		
leather wrapped	-	\$	\$		
Sunshades, colour-keyed padded cloth with RH storage strap and LH vanity mirror	\$	-	-		
with extenders and illuminated mirrors, RH includes storage strap	-	\$	\$		
Trim panels - side doors					
colour-keyed moulded, with armrests, cloth inserts, carpeted lower arcs, and lighted red-white reflectors;	\$	-	-		
front doors include map pockets	-	\$	\$		
colour-keyed moulded, with armrests, cloth inserts, carpeted lower arcs, and lighted red-white reflectors;					
front doors include map pockets	-	\$	\$		
Trim panels, rear load door and skidwall					
black composite fibre	\$	-	-		
colour-keyed	-	\$	\$		
<b>STORAGE, CARGO</b>					
Glovebox	\$	\$	\$		
Front seatback storage nets	\$	\$	\$		
Storage compartments, behind rear wheel housings	\$	\$	\$		
<b>PROTECTION AND SAFETY</b>					
Airbag, driver	\$	\$	\$		
Brakes					
anti-lock braking system	\$	\$	\$		
brake/transmission interlock	\$	\$	\$		
Controlled crush zones	\$	\$	\$		
Energy absorbing steering column	\$	\$	\$		
Galvanized steel body panels (except roof)	\$	\$	\$		
Hazard lamps	\$	\$	\$		
High-mounted centre stop light	\$	\$	\$		
Horn, steering wheel hub pad	\$	\$	\$		
Laminated urethane bonded windshield	\$	\$	\$		
Safety belts:					
driver and front outboard passenger - height adjustable	\$	\$	\$		
centre row, outboard only - height adjustable	\$	\$	\$		
/5 second safety belt warning light	\$	\$	\$		
Side impact beams	\$	\$	\$		
Wax-dipped frame	\$	\$	\$		

A word about this catalogue: We have tried to make the catalogue as comprehensive and factual as possible. However, since the time of printing some of the information you'll find here may have been updated. Also, some of the equipment shown or described through the catalogue may have been changed and/or available at a later date. And the rights reserved to make changes at any time without notice, in prices, colours, materials, equipment and models. Your Hidden Dealer has details, and before ordering, you should ask them to bring you up to date. The FGM Dealer or other person so authorized is permitted to give or make any statement, opinion or undertaking in relation to the quality, performance characteristics, distributors or fitness for any purpose of any FGM product which is in contrast with any written statement, opinion or undertaking on any of these subjects given or made by us. General Motors Australia Ltd. A.C.N. 004 962 522 in its published sales literature, and the company accepts no liability for any such misstatements or Hidden Dealer's in many parts of Australia have been franchised by us. General Motors Australia Ltd. For the sake of service parts and the position of service to owners of FGM products, every endeavour is made to ensure that such vehicles carry adequate stock of service parts, but there is no guarantee that such parts will be available at any specific location or at any particular time. Express warranties offered for FGM products are subject to the conditions set out in all vehicle handbooks. Details also available from FGM on request. Copyright 1998 - General Motors Australia Ltd. March 1998. GMS80071000116



## Suburban Specialist Dealers

[www.holden.com.au/suburban](http://www.holden.com.au/suburban)

### AUSTRALIAN CAPITAL TERRITORY

**Gerald Slaven Holden.** Belconnen

Ph: 02 6251 5111

### NEW SOUTH WALES

**A.C. McGrath & Co.** Liverpool

Ph: 02 9821 5000

**Barry Smith Holden.** Pennant Hills

Ph: 02 9481 8222

**Suttons City Holden.** Rosebery

Ph: 02 9931 3000

**Brian Kelly Holden.** Cardiff

Ph: 049 547 733

**John Kierath.** Dubbo

Ph: 068 821 011

**Bob Todd Motors.** Port Macquarie

Ph: 065 831 100

### VICTORIA

**Preston Motors.** Essendon Nth

Ph: 03 9374 2888

**Garry & Warren Smith Group.** Oakleigh

Ph: 03 9568 6333

**Patterson Cheney.** Ringwood

Ph: 03 9262 6666

**R. & B. Smith Holden.** Geelong

Ph: 0352 222 888

**Colin Watson Motors.** Traralgon West

Ph: 03 5174 8000

### QUEENSLAND

**Zupps Aspley.** Aspley

Ph: 07 3246 8000

**Eagers Retail.** Newstead

Ph: 07 3364 1199

**Robina Holden.** Robina

Ph: 07 5575 0500

**Ireland Holden.** Cairns

Ph: 070 523 666

**Lawrence's.** Rockhampton

Ph: 079 305 111

**Toowoomba Holden.** Toowoomba

Ph: 076 900 900

**Tony Ireland Townsville.** Townsville

Ph: 077 267 777

### TASMANIA

**Motors Pty Ltd.** Hobart

Ph: 03 6220 1171

### SOUTH AUSTRALIA/NORTHERN TERRITORY

**Claridge Holden.** Malvern

Ph: 08 8272 1600

### WESTERN AUSTRALIA

**Shacks Holden.** Fremantle

Ph: 08 9432 9432

**City Motors.** Perth

Ph: 08 9422 7777

For more information  
on the new Suburban call

**1800 629 222**

Monday - Friday 8:00am - 6:00pm

or visit our web site at

[www.holden.com.au/suburban](http://www.holden.com.au/suburban)



Official Automotive Partner

