



SPARK

HOLDEN
LET'S GO THERE





Daytime Running Lamps (DRLs) & Front Fog Lamps*



Push-button Start*



Alloy Wheels*



Spark LT in Absolute Red
^ 5.2L per 100km fuel efficiency figure based on Spark LS with manual transmission combined highway/urban ADR 81/02 testing. Results may vary depending on driving style, road conditions and vehicle load.
* Certain devices may not be compatible with the vehicle's MyLink system. See holden.com.au/myholdenconnect for details.
* Available on LT only.

SPARK YOUR STYLE

Whether you're zipping around town, staying connected with friends or just busy fitting more into your day, the new Spark is the stylish way to enhance your life.

It has sporty good looks with alloy wheels* and every Spark is packed with the latest technology, so it's easy for you to stay connected to the things that really matter.

You'll also love the way the new Spark drives, with energetic performance and enhanced safety features to protect you even more, like Daytime Running Lamps to make sure you'll be seen wherever life takes you.

Small car for big adventures

Spark has real style, but it also gives you all the space you need for a weekend getaway or your next exciting road trip. What's more, you can pair your smartphone with Holden MyLink* to listen to your playlists, call your bestie or access your favourite apps from the 7" colour touch-screen.

Sporty style

Contemporary proportions and a sleek roofline give a planted profile. With an array of eye-catching colours and a refined interior to match, you'll find all the creature comforts to make life much easier.

Go further for less

Go further for less with all-new fuel-efficient performance thanks to a standard 1.4L petrol engine. Class-leading entry-level power gives Spark zippy acceleration combined with impressive fuel economy of just 5.2L/100km[†].

Take your world on board:

- MyLink infotainment system* with 7" colour touch-screen
- Phone projection featuring Apple CarPlay®^ and Android® Auto™
- Bluetooth® audio streaming†
- iPod® connectivity
- Enhanced voice control
- Siri® Eyes Free^
- Hands-free calling
- Satellite Navigation via phone projection†
- Access phone contacts, calendars, reminders, playlists and more

^ Requires compatible iOS device.
See apple.com.au for more details.

~ Requires compatible Android® device.
See android.com for more details.

* Certain devices may not be compatible with the vehicle's MyLink system.
See holden.com.au/myholdenconnect for details.

† Data plan rates may apply.

* Spotify app must be purchased separately.
(Smartphone sold separately)

mylink



SYNC YOUR LIFE WITH SPARK

Connect your online life with your life on the go. Spark puts you in touch with class-leading connectivity, starting with the very latest MyLink™ technology featuring a large 7-inch colour touch-screen. Swipe to navigate through infotainment options, just like on your smartphone.

Spark syncs with your busy lifestyle. MyLink™ makes it easy with phone projection (Apple CarPlay®^ and Android® Auto™ functionality) so that certain smartphone apps can be accessed and controlled via your Spark's touch-screen, including Siri®^ for voice-to-text functionality or voice control. You can also play tunes from your Spotify®+ account, navigate with ease to all your favourite destinations and find new discoveries via Google® Maps™ or Apple® Maps^†.





Side curtain airbags

Collapsible pedal release system

Front airbags

1.4L 4cyl petrol engine

Brake Assist (BA)

Electronic Stability Control (ESC)

Electronic Brakeforce Distribution (EBD)

MORE POWER MORE SAFETY

Anti-lock Braking System (ABS)

Side impact airbags

Seatbelt pretensioners

Traction Control System (TCS)

The new Spark has been tuned locally for Australia's unique conditions. It's perfect for city driving, nimble and easy to manoeuvre safely around busy corners.

A Rear View Camera* and Rear Park Assist* make reverse parking a breeze, even in tight spots, and a smooth CVT automatic transmission# means seamless gear changes. You'll notice real benefits in fuel economy as well.

The new Spark has also been awarded the highest possible 5-star ANCAP safety rating. You'll have real peace of mind with front, side-curtain and side-impact airbags, as well as seatbelt pretensioners, crumple zones and a passenger safety cell.

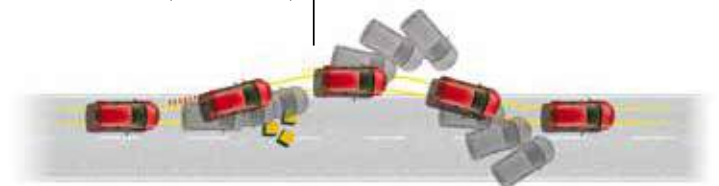
Get a more powerful drive and safer stopping with the latest technology in every new Spark.

How ESC helps you avoid accidents

Imagine you have to avoid an unexpected obstacle on the road. You end up with two wheels on the gravel verge and need to brake suddenly...

* Optional pack on LS, Standard on LT.
Optional transmission on LS.

TCS reduces torque to reduce slip



ESC brakes the left rear wheel momentarily to reduce understeer

ESC brakes the right front wheel momentarily to reduce oversteer

LS



Spark LS in Splash Blue



Spark LS in Son of a Gun Grey



LT



Spark LT in Absolute Red



Spark LT in Summit White



Spark LS redefines the small car with a compelling list of included must-haves, a high level of standard safety features and a bold, sports style unlike anything else on the road.

Standard features include:

- 1.4L petrol engine
- 5-speed manual transmission
- Optional CVT automatic transmission
- Electronic Stability Control (ESC) including Hill Start Assist
- Front airbags for driver and front passenger
- Side impact airbags for driver and front passenger
- Full length side curtain airbags
- ISOFIX Child Seat Anchorage System for two child seats
- Cruise Control
- Remote central locking
- Rear roof spoiler
- Daytime running lamps
- Interior trim – Jet Black Cloth
- 6-way adjustable driver seat
- Air Conditioning
- Holden MyLink infotainment system with 7" colour touch-screen*
- Phone projection featuring Apple CarPlay® and Android® Auto™
- 6-speaker audio
- Bluetooth®
- AUX input jack
- USB input
- Satellite navigation via phone projection**
- Optional Driver Assist Pack:
 - Rear Park Assist
 - Rear View Camera

[^] Requires compatible iOS device. See apple.com.au for more details.

⁻ Requires compatible Android® device. See www.android.com for more details.

^{*} Certain devices may not be compatible with the vehicle's MyLink system. See holden.com.au/myholdenconnect for details.

⁺ Data plan rates may apply.

Spark LT takes it to a new level with a Rear View Camera to make parking in tight spots a breeze, fog lamps that look great as well as helping you see in difficult conditions, and the luxury feel of perforated Sportec Seat trim.

Features in addition to LS include:

- CVT automatic transmission
- Passive Entry and Push-button Start with Sensor Key (PEPS)
- 15" alloy wheels
- Chrome accented upper and lower grilles
- Front fog lamps
- Jet Black Sportec seat trim
- Leather wrap steering wheel
- Rear Park Assist
- Rear View Camera
- Chrome accented lower side window sill
- Rear power windows
- Mirotic dash trim

ACCESSORIES



Spark LT in Summit White with Black Design Pack

16" Silver alloy wheels with Satin Steel Grey wheel inserts



Spark LT in Mineral Black with Red Design Pack

16" Black alloy wheels with Solar Red wheel inserts

Accessories available

- 15" alloy wheels available in Silver or Black with Satin Steel Grey or Solar Red wheel inserts*
- 16" alloy wheels available in Silver or Black with Satin Steel Grey or Solar Red wheel inserts*

- Grille Surrounds available in Black, Lime Green or Solar Red
- Rear spoiler available in Black, Lime Green, Solar Red
- Mirror caps available in Black, Lime Green or Solar Red

- Bonnet Protector
- Cargo Mat
- Decal package
- Headlamp Covers
- Luggage Net
- Mats - carpet

- Mudflaps
- Sill Plates
- Skid Plate
- Sport Pedals
- Weathershields
- Fog Lamp Trim Kit - Chrome
- Luggage Liners

*Suits LT model only.

DESIGN PACK

Make it personal.

1: CHOOSE YOUR WHEEL (LT ONLY)



15" Wheels: Black with Satin Steel Grey insert Black with Solar Red insert Silver with Satin Steel Grey insert Silver with Solar Red insert



16" Wheels: Black with Satin Steel Grey insert Black with Solar Red insert Silver with Satin Steel Grey insert Silver with Solar Red insert

2: CHOOSE YOUR COLOUR THEME



Grille, Black Grille, Solar Red Grille, Lime Green



Mirror caps, Black Mirror caps, Solar Red Mirror caps, Lime Green



Spoiler, Black Spoiler, Solar Red Spoiler, Lime Green

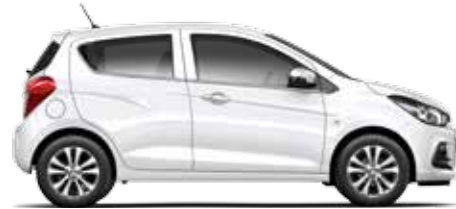
3: DRESS UP YOUR INTERIOR



Sill Plates Sport Pedals Floor Mats

COLOUR AND TRIMS

Exterior Colours



Summit White



Mineral Black*



Nitrate Silver*



Son of a Gun Grey*



Absolute Red



Splash Blue*



Creamy Beige*

Exterior and Interior trims

Model	Exterior colour							Interior trim
	Summit White	Splash Blue*	Nitrate Silver*	Son of a Gun Grey*	Absolute Red	Mineral Black*	Creamy Beige*	
LS	●	●	●	●	●	●	●	Jet Black Cloth
LT	●	●	●	●	●	●	●	Jet Black Sportec

Jet Black Cloth

Jet Black Sportec

FEATURES

	LS	LT		LS	LT
Engine and transmission					
1.4L 4cyl petrol engine	●	●			
5-speed manual transmission	●	-			
CVT Automatic transmission	○	●			
Safety and handling					
Electronic Stability Control (ESC) including Hill Start Assist	●	●			
Anti-lock Braking System (ABS)					
Brake Assist (BA)					
Electronic Brakeforce Distribution (EBD)					
Traction Control System (TCS)					
Hill Start Assist (HSA)					
Front airbags for driver and front passenger	●	●			
Side impact airbags for driver and front passenger	●	●			
Full length side curtain airbags	●	●			
Driver and front passenger seatbelt pretensioners	●	●			
Seatbelt warning lamp and tone	●	●			
ISOFIX Child Seat Anchorage System for two child seats	●	●			
Collapsible Pedal Release system	●	●			
Electric power steering	●	●			
Suspension – Front: McPherson strut, Rear: Torsion Beam	●	●			
Brakes – Front: Disc, Rear: Drum	●	●			
Security					
Engine Immobiliser	●	●			
Remote central locking	●	●			
Passive Entry and Push-button Start with Sensor Key (PEPS)	-	●			
2 spare keys (PEPS)	-	●			
Additional Remote flip key (Non PEPS)	●	-			
Wheels and Tyres					
14" x 5" steel wheels 165/65R14-79T (4)	●	-			
15" x 6" alloy wheels 185/55R15-82H (4)	-	●			
14" x 4" steel spare space saver wheel T105/70S/70D14-84M	●	●			
Exterior					
Body coloured exterior door handles	●	●			
Body coloured exterior mirrors	●	●			
Remote release fuel filler flap	●	●			
Black grille	●	-			
Black grille with chrome accent	-	●			
Rear roof spoiler	●	●			
Headlamps – Halogen	●	●			
Daytime running lamps	●	●			
Front fog lamps	-	●			
High mount stop light	●	●			
Front wipers – variable intermittent	●	●			
Rear wiper – intermittent	●	●			
Chrome accented lower side window sill	-	●			
Driver and Cabin Comfort					
Interior trim – Jet Black cloth	●	-			
Interior trim – Jet Black Sportec	-	●			
Leather wrap steering wheel	-	●			
Instrument panel storage compartment	-	●			
Dimmable instrument panel	●	●			
6-way adjustable driver seat	●	●			
4-way adjustable front passenger seat	●	●			
Height-adjustable front headrests	●	●			
Front passenger seat back pocket	-	●			
Rear seats – Folding seatback and cushion 40/60 with 3 headrests	●	●			
Rear seat lower cushion fold up for flat folding	●	●			
Driver and front passenger sunshades with mirror and cover	●	●			
Rear coat hooks	●	●			
Front passenger overhead assist handle	●	●			
Trip computer displaying:	●	●			
Average speed					
Outside temperature					
Distance to empty					
Oil Life Monitoring					
Steering wheel mounted phone and audio controls	●	●			
Electric					
Cruise Control	●	●			
Rear Park Assist		P ●			
Rear View Camera		P ●			
Air Conditioning	●	●			
Rear compartment courtesy lamp	●	●			
Front power windows	●	●			
Rear power windows	-	●			
Rear compartment touch pad Open/Close (Unlock with door unlock)	●	●			
Power Outlet – Centre console	●	●			
Infotainment					
Holden MyLink infotainment system*	●	●			
Phone projection featuring Apple CarPlay®* & Android® Auto™	●	●			
6 speaker audio	●	●			
Bluetooth®*	●	●			
AUX input jack	●	●			
USB input	●	●			

● Standard

○ Optional

P Optional Pack

^ Requires compatible iOS device.

See apple.com.au for more details.

~ Requires compatible Android device.

See www.android.com for more details.

* Certain devices may not be compatible with the vehicle's MyLink system.

See holden.com.au/myholdenconnect for details.

+ Data plan rates often apply.

Variations between colours shown and actual paint colours/interior trim colours may occur due to the printing process.

* Prestige paints are available at an additional cost. Certain colours may not be available from time to time.

TECHNICAL SPECIFICATIONS

Transmission	5-speed Manual	CVT Automatic		
Engine	Ecotec 1.4L 4cyl DOHC petrol			
Bore x stroke (mm)	74 x 81.3			
Displacement (cc)	1399			
Compression ratio (:1)	10.6			
Power (kW)	73@6200			
Torque (Nm)	124@4400	128@4400		
Gear ratios	1st	3.636	Ratio coverage:	7.3
	2nd	1.864	Pulley ratio:	2.20~0.55
	3rd	1.189	Final Gear ratio:	3.574
	4th	0.946		
	5th	0.756		
	Reverse	3.385		3.77
Final drive	3.905	Through low ratio:	3.754	
Recommended Fuel	91 RON ULP	91 RON ULP		
Fuel tank capacity (litre)	32	32		
Steering	Electric Power Steering			
Electronic Stability Control (ESC)	Incorporating: Anti-lock Braking System (ABS), Brake Assist (BA), Electronic Brakeforce Distribution (EBD), Traction Control System (TCS)			
Chassis	Front: McPherson Strut. Rear: Torsion Beam			
Brakes	Front: Ventilated disc. Rear: Drum			
Anti-lock Braking System (ABS)	4 channel, 4 sensor			
Service	The complimentary inspection is due at 1 month. The first service is due at 15,000km or 9 months (whichever occurs first) and then every 15,000km or 9 months (whichever occurs first) since the last service. Additional services may be required under certain driving conditions such as when towing (refer to Owner's Handbook).			
Exterior dimensions				
Length (mm)	3595			
Width (mm) – excluding mirrors	1595			
Height (mm)	1476			
Wheelbase (mm)	2385			
Track front/rear (mm)	1410/1418			
Interior dimensions				
Leg room front/rear (mm)	1060/839			
Shoulder room front/rear (mm)	1291/1264			
Head room front/rear (mm)	1005/955			
Luggage capacity (l)	Rear seat up: 185 Rear seat folded: 985			
Turning diameter (m)	14" wheel (LS): 9.6m 15"/16" wheel (LT): 10.4m			



AUSTRALIA'S BIGGEST CAPPED PRICE SERVICING PROGRAM[^]

Every Holden comes with Lifetime Capped Price Servicing[^]. For the entire ownership of your Holden, you will know exactly what your standard services will cost, before you even drop off your car. This gives you complete peace of mind that the price of your scheduled service will never be more than you expect.

What's more, Holden's Lifetime Capped Price Servicing[^] program isn't just for new vehicles, it includes every Holden ever built – dating back to 1948! It's Australia's biggest Capped Price Servicing program and just another reason to feel good about owning a Holden.



NO SURPRISES, NO UNCERTAINTY, NO WORRIES.

There's nothing more exciting than buying a new car. And Holden provides a complete Aftersales program to make sure you not only feel good about your new Holden now, but also in the years to come.

So whether you're looking to add that 'personal touch' with Genuine

Parts and Accessories, or seeking peace of mind with Holden Professional Care's Lifetime Capped Price Servicing[^], you can be assured that you're being looked after by Holden trained experts that operate in one of Australia's largest service networks.



LIFETIME CAPPED PRICE SERVICING[^]

Every Holden comes with Lifetime Capped Price Servicing. This gives you complete peace of mind and no uncertainty for the life of your vehicle.



PARTS AND ACCESSORIES

Give your Holden a personal touch by choosing from our range of Genuine Holden Parts and Accessories, exclusively at Holden Dealers.



WARRANTY

Holden's New Vehicle Warranty[^] applies from the day your vehicle is first registered. Holden approved and Genuine Accessories and parts are also covered.



ROADSIDE

To ensure your Holden delivers you an uninterrupted driving experience, your vehicle comes with one year of Standard Roadside Assistance.



CUSTOMER CARE

Holden Customer Care is available to answer any questions. Call 1800 033 349. 8am - 7pm Mon-Fri, 9am - 1pm on Sat (AEST). holdencustomer@gm.com



RENTAL

At highly competitive prices, Holden Rental will keep you on the road with the latest high quality, low KM models.

TO FIND OUT MORE VISIT WWW.HOLDEN.COM.AU/OWNERSHIP

[^] Subject to Lifetime Capped Price Service terms and conditions. See holden.com.au for details and to obtain a quote.

* Our goods come with guarantees that cannot be excluded under the Australian Consumer Law. You are entitled to a replacement or refund for a major failure and compensation for any other reasonably foreseeable loss or damage. You are also entitled to have the goods repaired or replaced if the goods fail to be of acceptable quality and the failure does not amount to a major failure.



Bluetooth® is a registered trademark and logo of Bluetooth SIG, Inc.
iPod®, Siri® and Apple CarPlay® are registered trademarks of Apple Inc.
Android® Auto and Google® Maps are registered trademarks of Google Inc.
Spotify® is a registered trademark of Spotify Australia Pty Ltd.

Cover image: Spark LT in Absolute Red

A word about this brochure. We have tried to make this brochure as comprehensive and factual as possible. However, since the time of printing some of the information you'll find here may have been updated. Also, some of the equipment shown or described through this brochure may have been changed and/or is available at extra cost. Further, GM Holden Ltd ABN 84 006 893 232 (Holden), reserves the right to make changes at any time without notice, in prices, colours, materials, equipment and models. Your Holden Dealer has details, and before ordering, you should ask them to bring you up to date. No Holden Dealer or other person is authorised or permitted to give or make any statement, assertion or undertaking in relation to the quality, performance characteristics, descriptions or fitness for any purpose of any Holden product which is at variance with any written statement, assertion or undertaking on any of these subjects given or made by Holden in its published sales literature, and Holden does not accept any liability for any such unauthorised action. Holden has authorised Dealers in many parts of Australia for the sale of service parts and the provision of service to owners of Holden's products. Every endeavour is made to ensure that such Dealers carry adequate stocks of service parts, but Holden doesn't make any promise other than that contained in the New Vehicle Warranty given by Holden that such parts or service facilities will be available at any specific location or at any particular time. Express warranties offered for Holden products are subject to the conditions set out in all vehicle handbooks. Details also available from Holden on request. Copyright Holden. July 2016. HBR2347 AD13597.