



Captiva



Holden
Let's go there



The most versatile member of the family.

Family life can get pretty hectic, juggling school runs, the demands of work and making time for weekend getaways. So how do you fit it all in? It's easy with a Captiva. With its five or seven seats and surprisingly compact exterior, it's the versatile SUV packed with comfort and style.

Available in Two Wheel Drive and Active All Wheel Drive, including petrol and diesel options, the Captiva is both fuel efficient and fun to drive. And because it's your family we're talking about, every Captiva comes with the very latest safety technology.

Keeping you and your family safe

- Rear View Camera shows you what's behind when reversing, automatically on the 7-inch colour touch-screen.
- Active Rollover Protection monitors body roll and automatically initiates braking counter measures if required.
- Hill Start Assist prevents the Captiva unintentionally rolling backwards or forwards down a slope. Engaging automatically on gradients, it keeps your vehicle stationary after the brake is released, giving you time to use the accelerator to pull away.

- Descent Control System is activated with the touch of a button. The Captiva's Descent Control System uses engine control and automatic braking to limit downhill speed. It enables smooth, controlled hill descents and allows the driver to concentrate primarily on steering.
- ISOFIX child seat anchorage technology across the Captiva range ensures your precious little ones are kept safe with a rock solid connection between the vehicle and the seat. You'll find ISOFIX-equipped child seats easy to install and remove every time.
- Should a collision occur, passive safety systems instantly determine the severity and direction of impact, then activate the required occupant protection features.

Packed full of the latest technology.

Take your world on board:

- MyLink infotainment system* with 7" colour touch-screen
- Phone projection featuring Apple CarPlay** and Android® Auto*
- Bluetooth® audio streaming*
- iPod® connectivity
- Enhanced voice control
- Siri® Eyes Free*
- Hands-free calling
- Satellite Navigation via phone projection*
- Access phone contacts, calendars, reminders, playlists and more

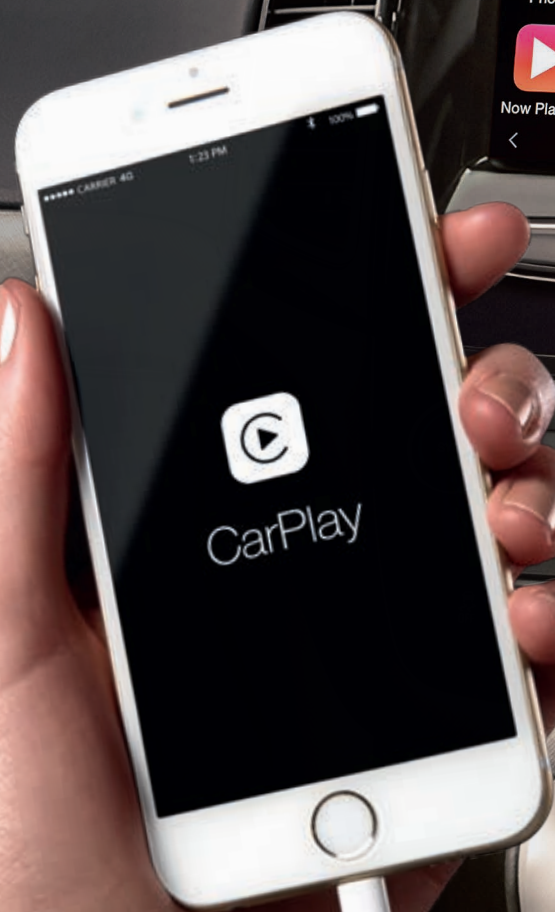
* Requires compatible iOS device. See apple.com.au for more details.

- Requires compatible Android device. See android.com for more details.

* Certain devices may not be compatible with the vehicle's MyLink system. See holden.com.au/myholdenconnect for details.

+ Data plan rates often apply.

mylink



Captiva LTZ

Every Captiva comes with the kind of technology you and your family will appreciate at your fingertips, with the latest MyLink infotainment system* featuring a big 7-inch colour touch-screen.

Phone projection technology featuring Apple CarPlay® and Android® Auto ensures the family is always connected. You can now stream music via Spotify and navigate your holidays utilising Apple or Google Maps.

Blind Spot Alert*

Makes second-guessing lane changes a thing of the past. There are radars mounted to either side of the Captiva LTZ that constantly monitor its blind spots for approaching traffic. When an encroaching vehicle is detected a warning light appears on the corresponding side mirror.

Rear Cross Traffic Alert (RCTA)*

When reversing, RCTA intuitively scans cross traffic and warns of an approaching motor vehicle hazard.

Passive Entry and Start with Sensor Key Technology

This ultra-convenient feature allows you to leave your keys in your pocket or bag with the ability to unlock and start the car with a push of a button simply by carrying the sensor key with you.



Available on LTZ model only.

High performance, lower fuel bills.

The Captiva offers you a choice of three state-of-the-art engines from Holden's range of advanced fuel-saving technologies.

Economy Drive mode

- Eco Drive mode is designed to improve the Captiva's fuel economy. When engaged, the transmission will upshift sooner and downshift later, the torque converter will lock up sooner and stay on longer, and the accelerator pedal will be less sensitive.

Self-leveling suspension

- The Captiva's advanced self-leveling suspension system detects the amount of cargo being carried in the vehicle and automatically adjusts itself to maintain optimum ride, control and aerodynamics*.

3.0 litre V6 petrol

- The advanced, all-alloy SIDI V6 engine in LT and LTZ models produces smooth, ample power over a broad rev range, with increased fuel economy and lower CO2 emissions.

- Able to haul a 2,000kg tow load (braked trailer), the 3.0 litre will reward you with effortless performance under all driving conditions.

- Maximum power:
190kW @ 6900rpm*

- Maximum torque:
288Nm @ 5800rpm*

2.4 litre petrol

- A high output, 4-cylinder engine with variable valve timing, this dual overhead cam powerplant for the two wheel drive LS model is smooth, reliable and provides linear delivery of torque, with near-peak levels over a broad range of revs. Fast to respond, slow to 'empty', its spirited performance makes driving a joy.

- Maximum power:
123kW @ 5600rpm*

- Maximum torque:
230Nm @ 4600rpm*

2.2 litre turbo diesel

- The Captiva's 4-cylinder turbo diesel engine is equipped with high-pressure common rail fuel injection, so it delivers thrilling performance and torque smoothly and quietly.

- Maximum power:
135kW @ 3800rpm*

- Maximum torque:
400Nm @ 1750-2750rpm*

*Maximum figures as per ECE regulations.
*Available in 7-seat models only.

Captiva LS. Family Friendly.



Captiva LS in Red-E or Not

More storage, more options.

50/50 split fold third row seats

- Need to carry extra cargo? Fold down one or both third row seats as needed and the Captiva's cargo area instantly grows from 85 litres up to 465 litres.

60/40 split fold second row seats

- More cargo than passengers? Fold down both second and third row seats and you now have a massive 930 litre space at your disposal.

Flat cargo space

- Flat folding third and second row seats means a flat cargo space. So regardless of the seating configuration, you can easily move items into place.

Folding front passenger seat

- Need to bring home something big? Something really big? Fold down the front passenger seat as well, and your Captiva will safely carry objects up to 2.7 metres in length.

Three 12 volt power outlets

- Conveniently located 12 volt power outlets in the front, second row and cargo area ensure everyone's electronic devices can be kept fully charged.

Wide tailgate opening

- The Captiva's high loading height and wide tailgate opening make it easy to access the vehicle's cargo area, and less stressful on your lower back.



The SUV, just the way you want it, available in either a turbo diesel or an economical 4-cylinder petrol engine, the boldly styled Captiva LS comes with all the safety and technology 'must haves', plus premium luxury inclusions like a 7-inch colour touch-screen with Phone Projection technology, Electric Park Brake, Rear Park Assist, Rear View Camera, Bluetooth** with audio streaming and a USB input with iPod® connectivity.



Captiva LS in Son of a Gun Grey

Standard features include:

- 2.4 litre 4-cylinder petrol engine
- 6-speed manual transmission
- Optional 2.2 litre 4-cylinder common rail turbo diesel engine
- Optional 6-speed automatic transmission with Active Select
- Electronic Stability Control
- Six airbags
- Auxiliary input
- USB input with iPod® connectivity
- Bluetooth** connectivity, including audio streaming
- Leather wrap steering wheel with audio controls
- Cloth seat trim
- Power windows, front and rear
- 17" alloy wheels (4)
- Chrome exhaust tips
- Rear Park Assist
- LED Daytime Running Lamps
- MyLink infotainment system* with 7" colour touch-screen
- Phone projection featuring Apple CarPlay® and Android® Auto™
- 6-speaker audio system
- Satellite Navigation via phone projection+
- Dual Zone Electronic Climate Control
- Rear View Camera
- Electric Park Brake
- ECO Drive (fuel economy mode)
- Hill Start Assist
- Level ride rear suspension
- Passive Entry and Start with sensor key
- 5-star ANCAP rating
- Optional 3rd row seat

* Requires compatible iOS device. See apple.com.au for more details.
* Requires compatible Android device. See android.com for more details.
* Certain devices may not be compatible with the vehicle's MyLink system. See holden.com.au/myholdenconnect for details.
+ Data plan rates often apply.



Captiva LT.

Luxury at every turn.



Captiva LT in Mineral Black



Captiva LT in Summit White



18" alloy wheels (4)

Front fog lamps



Electric sunroof

With the option of turbo diesel or SIDI Direct Injection V6 under the bonnet, the Captiva LT offers a huge step up with Active All Wheel Drive performance, and even more luxury features, including 18" alloy wheels (4), Sportec seat bolsters, front fog lamps and roof rails.

Standard features in addition to LS include:

- 3.0 litre V6 SIDI Direct Injection petrol engine
- Optional 2.2 litre 4-cylinder common rail turbo diesel engine
- 6-speed automatic transmission with Active Select
- Active All Wheel Drive
- Dual USB inputs with iPod® connectivity
- Privacy glass
- Fold flat 3rd row seat
- Electric sunroof (delete option upon request)
- Cloth seat trim with Sportec bolsters
- 18" alloy wheels (4)
- Front fog lamps
- Roof rails (charcoal)
- Sidesteps
- Body-coloured side mouldings
- 3rd row rear air conditioning

Captiva LTZ.

Safety without compromise.



Captiva LTZ in Nitrate Silver

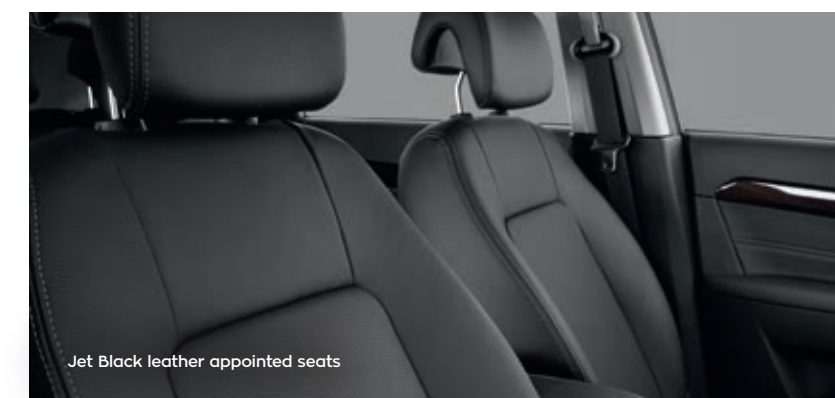


Captiva LTZ in Burnt Coconut

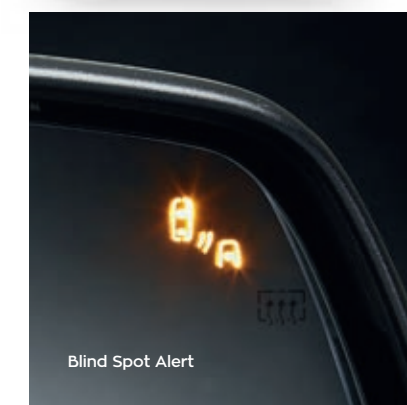
In the range-topping Captiva LTZ, you'll be surrounded by a wish list of sophisticated luxuries and state-of-the-art technology, including 19" alloy wheels (4), satin silver roof rails, leather appointed seats that are heated in the front, and the latest safety technologies, including Blind Spot Alert and Rear Cross Traffic Alert.

Standard features in addition to LT include:

- Heated front seats
- Leather appointed seat trim
- Electric 8-way adjustment of driver's seat
- 19" alloy wheels (4)
- Roof rails (satin silver)
- Blind Spot Alert
- Rear Cross Traffic Alert
- Front passenger under-seat storage tray
- 8-speaker audio system



Jet Black leather appointed seats



Blind Spot Alert



LED Daytime Running Lamps

Accessories.



Captiva LTZ in Mineral Black

Headlamp Protectors

Bonnet Protector

Holden spends years in Research and Development to ensure every single car we build delivers what each driver demands. Genuine Holden Accessories give you the extra flexibility to further personalise your new Captiva to fit your world. The choice is yours. Enjoy.

holden.com.au/cars/captiva/range



Locknuts

Rear Luggage Barrier – steel (two position)

Luggage Organiser

Luggage Net

Exterior



- 01 Headlamp Protectors**
Provide durable protection against stone chips and scratches
- 02 Weathershields**
For driver and front passenger
- 03 Towing package**
The Holden tow bar kit is designed specifically for your vehicle, and is available with a range of accessories. Refer to your Holden Dealer or your owner's manual for towing specifications
- 04 Nudge bar**
The nudge bar is designed to work with the vehicle's SRS airbag system in the event of a frontal impact
- 05 Wheel lock nuts**
- 06 HID Driving lamp package**
Combination of 'pencil' and 'spread' beam. Up to 1km range. (Requires nudge bar for fitment)
- 07 Bonnet Protector**
- 08 Roof Cross Bars**
To suit LS models

Interior



- 10 ISOFIX child seat**
Offers the highest level of safety for your children
- 11 Cargo blind**
Help keep your Captiva looking tidy while providing extra security by concealing items in the cargo area
- 12 Boot lip protector**
Attaches firmly to the floor of the cargo compartment, and is easily folded into place when required
- 13 Boot liner - carpet/rubber**
Reversible load liner with high quality tailored carpet on one side and heavy duty rubber on the reverse
- 14 Cargo organiser**
Great for storing shopping bags and other loose items
- 15 iPad holder**
Comes with headphones and charger*
- 16 Moulded boot liner**
- 17 Neoprene Seat Covers**
- 18 Smartshades**
Creates privacy and shade. Available for rear windows and rear windscreen
- 19 All-weather floor mats**
- 20 Carpet floor mats**

*iPad not included. iPad is a registered trademark of Apple Inc.

Features.

	LS	LT	Ltz
Engine and transmission			
2.4 litre 4-cylinder petrol engine with 6-speed manual transmission	●	—	—
2.4 litre 4-cylinder petrol engine with 6-speed automatic transmission and Active Select	○	—	—
3.0 litre V6 SIDI petrol engine with 6-speed automatic transmission and Active Select	—	●	●
2.2 litre 4-cylinder common rail turbo diesel engine with 6-speed automatic transmission and Active Select	○	○	○
Active All Wheel Drive (AWD)	—	●	●
Two Wheel Drive (2WD)	●	—	—
Safety and handling			
4-channel Anti-lock Braking System	●	●	●
4-wheel disc brakes, front and rear ventilated	●	●	●
Active Rollover Protection	●	●	●
Brake Assist	●	●	●
Descent Control System	●	●	●
Electronic Brakeforce Distribution	●	●	●
Electronic Stability Control	●	●	●
Traction Control System	●	●	●
Hill Start Assist	●	●	●
Electric Park Brake	●	●	●
Four-link Independent Rear Suspension	●	●	●
Self-levelling suspension (7-seat only)	○	●	●
Rack and pinion power steering	●	●	●
Driver and front passenger airbag	●	●	●
Side impact airbags for driver and front passenger	●	●	●
Curtain airbags	●	●	●
Child-proof rear door locks	●	●	●
Child restraint anchor fittings (3) fixed to 2nd row	●	●	●
ISOFIX child seat anchorage system	●	●	●
Audible seatbelt warning	●	●	●
Pyrotechnic front seatbelt pretensioners	●	●	●
Front seatbelt load force limiter	●	●	●
Front seatbelt sash height adjust	●	●	●
Blind Spot Alert	—	—	●
Rear Cross Traffic Alert	—	—	●
Security			
Engine immobiliser	●	●	●
Key security code	●	●	●
Passive Entry and Start with sensor key technology	●	●	●
Remote keyless entry operates:	●	●	●
- Interior lighting	●	●	●
- Central locking for keyless entry	●	●	●
- Tailgate	●	●	●
- Fuel filler door	●	●	●
Wheels and tyres			
17" x 7" 6-spoke alloy wheels, 235/60 R17 tyres (4)	●	—	—
18" x 7" 5-twin spoke alloy wheels, 235/55 R18 tyres (4)	—	●	—
19" x 7" 5-spoke alloy wheels, 235/50 R19 tyres (4)	—	—	●
16" x 6.5" steel spare wheel, 215/70 R16 tyre (no cost option)	○	○	○
Tyre inflator kit	●	●	●
Exterior			
Anti-corrosion protection	●	●	●
Centre high-mount stop lamp	●	●	●
Dual chrome exhaust tips	●	●	●
Body coloured exterior door handles with chrome highlights	●	●	●
LED Daytime Running Lamps	●	●	●
Front fog lamps	—	●	●
Moulded mudflaps, rear	●	●	●
Power side heated mirrors with auto off function and side turn signal	●	●	●
Rear fog lamps	●	●	●
Side fender vents	●	●	●
Sidesteps	—	●	●
Silver decorative skid plates, front and rear	—	—	●
Wheel arch mouldings	●	●	●
Driver and cabin comfort			
Dual zone electronic climate control	●	●	●
Cargo area lamp	●	●	●
Electric sunroof (delete option upon request)	—	●	●
3rd row air conditioning (standard on 7 seat variant)	○	●	●
Rear dome lamp - luggage illumination	●	●	●
Centre dome lamp with delay function	●	●	●
Front passenger and 2nd row overhead folding assist handles	●	●	●
Front reading lamps	●	●	●
Power windows, front and rear	●	●	●
Sill plates (black)	●	—	—
Sill plates (stainless steel)	—	—	●
Tinted windows	●	●	●
Privacy glass	—	●	●
Vanity mirror, driver and passenger, with cover	●	●	—
Vanity mirror, driver and passenger, illuminated with cover	—	—	●

	LS	LT	Ltz
Lumbar support	●	●	●
Fold-flat 2nd row seat	●	●	●
Fold-flat 3rd row seat	○	●	●
Fold-down 2nd row seats allowing access to 3rd row seats	○	●	●
Folding front passenger seat	●	●	●
Seating capacity for seven	○	●	●
Seat trim - cloth	●	—	—
Seat trim - cloth with Sportec bolsters	—	●	—
Seat trim - leather appointed	—	—	●
Heated front seats	—	—	●
Electric 8-way adjustment of driver's seat	—	—	●
Three height adjustable 2nd row seat head restraints	●	●	●
Automatic headlamp mode	●	●	●
Cruise control	●	●	●
Electrochromatic inside rear view mirror	—	—	●
Windshield variable intermittent wipers	●	●	●
Rear window intermittent wiper	●	●	●
Leather wrap steering wheel	●	●	●
Rear Park Assist	●	●	●
Rear View Camera	●	●	●
Steering wheel height and reach adjust	●	●	●
Storage and cargo			
12 volt power outlet, front, 2nd row and cargo compartment	●	●	●
60/40 split fold 2nd row rear seat back	●	●	●
50/50 split fold 3rd row rear seat back	○	●	●
3rd row seat cup holder	○	●	●
Multipurpose centre console box with armrest	●	●	●
Rear seat centre armrest with two cup holders and a small storage compartment	●	●	●
Coat hooks	●	●	●
Front seat back pockets	●	●	●
Front passenger under seat storage tray	—	—	●
Front and rear door storage bins	●	●	●
Roof rails (charcoal)	—	—	●
Roof rails (satin silver)	—	—	●
Sunglasses holder	●	●	●
Infotainment			
MyLink infotainment system* with 7" colour touch-screen	●	●	●
Phone projection featuring Apple CarPlay® and Android® Auto-	●	●	●
Enhanced voice control	●	●	●
Siri® Eyes Free®	●	●	●
Satellite Navigation via phone projection+	●	●	●
Speakers: quantity	6	6	8
Auxiliary input jack	●	●	●
Bluetooth® audio streaming*	●	●	●
Steering wheel mounted audio controls	●	●	●
Dual USB inputs with iPod® connectivity	—	●	●
USB input with iPod® connectivity	●	—	—

- Standard
- Optional

* Requires compatible iOS device. See apple.com.au for more details.
 - Requires compatible Android device. See android.com.au for more details.
 * Certain devices may not be compatible with the vehicle's MyLink system.
 See holden.com.au/myholdenconnect for details.
 + Data plan rates often apply.

Colour and trim.



Summit White



Nitrate Silver*



Son of a Gun Grey*



Red-E or Not



Mineral Black*



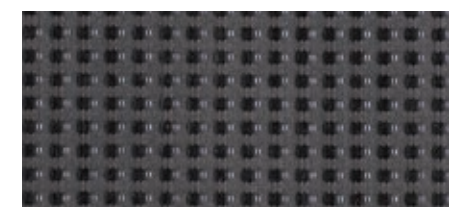
Burnt Coconut*



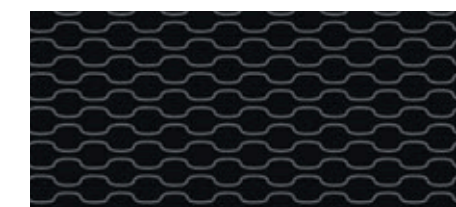
Blue Eyes*

Model	Exterior colour							Interior trim
	Standard paint	Prestige paint						
	Summit White	Red-E or Not	Son of a Gun Grey*	Nitrate Silver*	Mineral Black*	Burnt Coconut*	Blue Eyes*	
LS	●	●	●	●	●	●	●	Jet Black 'Megan' cloth seats
LT	●	●	●	●	●	●	●	Jet Black 'Mark' cloth seats with Sportec bolsters
Ltz	●	●	●	●	●	●	●	Jet Black leather appointed seats

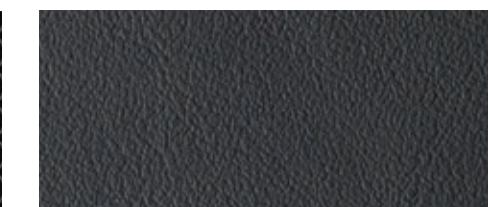
Variations between colours shown and actual paint colours /Interior trim colours may occur due to the printing process.
 * Prestige paints are available at an additional cost.
 Certain colours may not be available from time to time.



'Megan' cloth seats



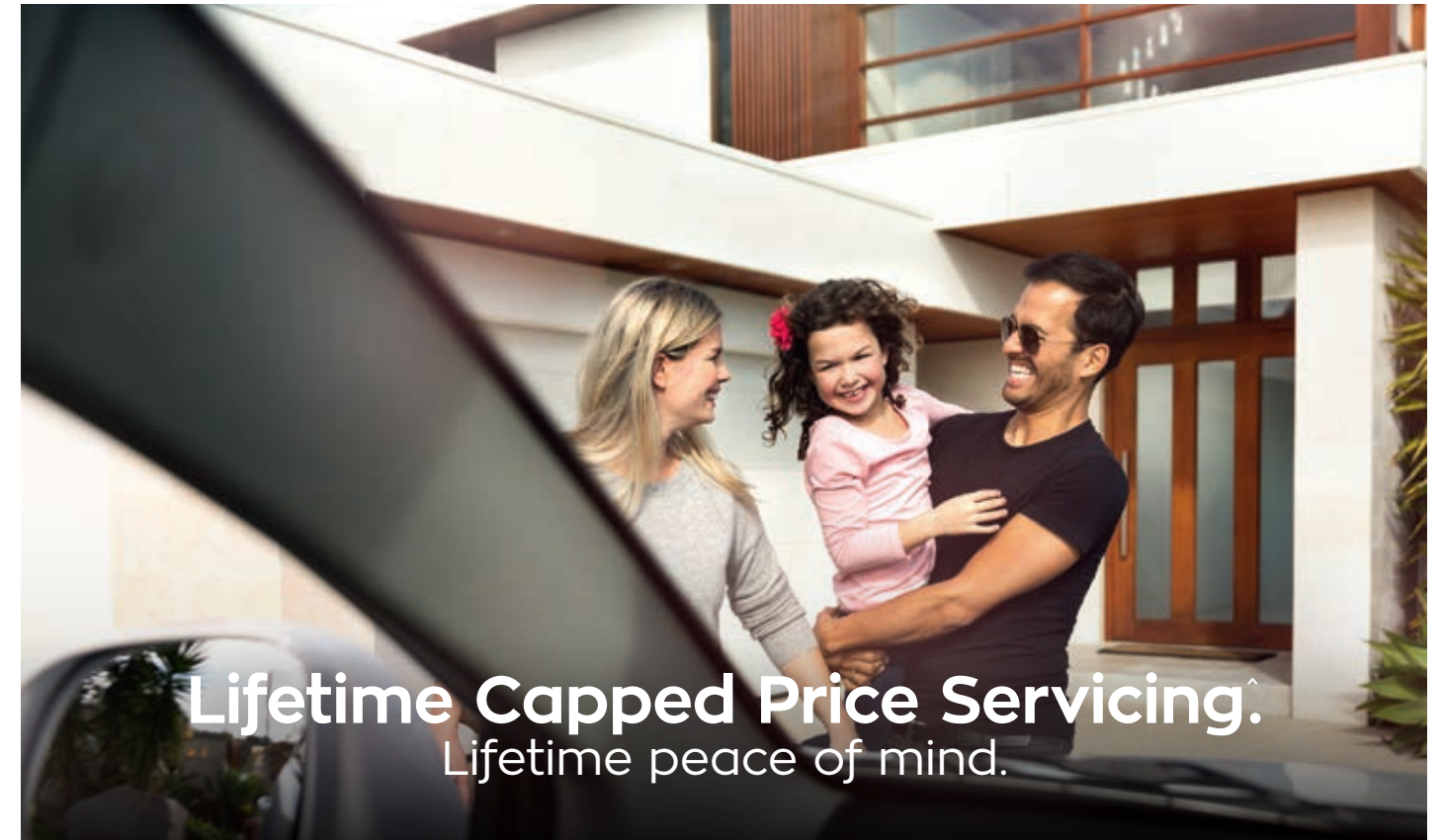
'Mark' cloth seats with Sportec bolsters



Jet Black leather appointed seats

Technical specifications.

	123kW*, 2.4 litre 4-cylinder petrol engine	135kW*, 2.2 litre 4-cylinder common rail turbo diesel engine	190kW*, 3.0 litre SIDI Direct Injection V6 engine		
Engine	2.4 litre Double Overhead Cam 4-cylinder multi-point fuel injection with four valves per cylinder	2.2 litre Double Overhead Cam 4-cylinder with four valves per cylinder. Cast iron block, aluminium head. High-Pressure Common Rail Direct Injection	3.0 litre 60-degree Double Overhead Cam V6 with four valves per cylinder. Twin knock control sensors with individual cylinder adaptive control. On board diagnostics. Spark Ignition Direct Injection (SIDI)		
Capacity (cc)	2384	2231	2997		
Compression ratio	10.4	16.3	11.7		
Maximum power (ECE, kW)#	123 @ 5600rpm	135 @ 3800rpm	190 @ 6900rpm		
Maximum torque (ECE, Nm)#	230 @ 4600rpm	400 @ 1750-2750rpm	288 @ 5800rpm		
Recommended fuel	91 RON (ULP), 95 RON (PULP or higher may result in improved engine performance and efficiency)	Diesel	91 RON (ULP), 95 RON (PULP or higher may result in improved engine performance and efficiency)		
Fuel tank (L)	65				
Active All Wheel Drive (AWD)*	The All Wheel Drive system is 'Active Torque on Demand'. An electronically controlled electro-hydraulic differential ensures the best possible torque distribution between the front and rear axles. As driving conditions dictate, the rear axle is employed via an electronically controlled electro-magnetic coupling to give increased traction. The torque split ratio between front and rear wheels is variable in real time depending on the driving conditions				
Brakes (mm)	Four wheel disc. Ventilated discs - front and rear				
Front diameter	296				
Rear diameter	303				
Anti-lock Braking System (ABS)	4-channel, 4-sensor				
Traction Control System (TCS)	When sensors detect imminent wheel spin, engine torque is reduced. If one wheel starts to spin, braking is applied to transfer torque to the wheel(s) with better traction				
Brake Assist (BA)	Provides additional braking assistance by allowing the driver to reach the ABS threshold sooner and therefore help to reduce stopping distances				
Electronic Stability Control (ESC)	Assists the driver in emergency situations by providing correction to the intended vehicle path, which may help the driver avoid obstacles and reduce slides. This is accomplished via individual brake application and engine torque management control				
Descent Control System (DCS)	Utilises the active braking capability of the ESC to maintain a controlled speed when travelling down hill				
Active Rollover Protection (ARP)	ARP is designed to reduce the risk of rollover when lane changing and cornering, working in conjunction with the ESC system				
Hill Start Assist (HSA)	HSA prevents the car from rolling away when trying to pull away on an upward or downward gradient. The system engages automatically when a gradient is detected; it then acts to hold the car stationary after the brake is released, giving the driver time to apply the throttle				
Suspension	Front: MacPherson strut, gas pressurised dampers, stabiliser bar. Rear: Independent four-link, gas pressurised dampers, stabiliser bar				
Steering	Rack and pinion power steering				
Roof Load (kg)	100				
Turn circle (curb to curb, m)	11.87				
Cargo volume (L)	All seats up/folded	85			
	3rd row seats folded	465			
	All rear seats folded	930			
	Front passenger, all rear seats folded	1565			
Towing (kg)	Braked	1500	2000	2000	
	Unbraked	750	750	750	
Service	The complimentary inspection is due at 1 month. The first service is due at 15,000km or 9 months (whichever occurs first) and then every 15,000km or 9 months (whichever occurs first) since the last service. Additional services may be required under certain driving conditions such as when towing (refer to Owner's Handbook)				
Track (mm)	Front	1569			
	Rear	1576			
Wheelbase (mm)	2707				
Exterior dimensions (mm)	Length	Width	Height	Height (including roof rails)	
	4673	1849	1727	1756	
Ground clearance (mm)	200				
Interior dimensions (mm)	Front	Leg	Shoulder	Head	Hip
		1036	1455	1026	1349
	Rear	Leg	Shoulder	Head	Hip
		946	1455	1017	1357



Lifetime Capped Price Servicing.
Lifetime peace of mind.

Know the cost.

You'll know exactly what you'll be charged for each scheduled service before you even drop off your car.

Your car is being taken care of.

With trained expert technicians using only Holden-approved parts and fluids, sleep easy knowing your car is taken care of.

Every Holden in Australia.

As one of Australia's biggest Capped Price Servicing* programs, we're proud to offer you complete service cost transparency on every Holden ever built, dating back to 1948.

Calculate the cost of servicing your Holden using the online calculator at holden.com.au/completecure

No surprises, no uncertainty, no worries.

Lifetime Capped Price Servicing* is just one of the many ways that Holden Complete Care puts you first.

We're also pleased to offer you our new *Take Your Time Test Drive*. Now we give you the option of a 24-hour test drive when you are choosing a new car, so you can get to know any Holden on your terms.†

And of course, no matter which new Holden you choose, it's reassuring to know that every new vehicle is covered by a **3 year/100,000km Warranty***

What's more, with Holden Complete Care you get the added peace of mind of one year's *Roadside Assistance*, in case you should ever need it.

With Lifetime Capped Price Servicing* and lots more, Holden Complete Care is our way of caring for you and your car.



Take Your Time Test Drive



3 year/100,000km Warranty*



Roadside Assistance

Find out more by going to holden.com.au

Maximum figures as per ECE regulations
* Not available on LS models

* Subject to Lifetime Capped Price Service terms and conditions. See holden.com.au for details and to obtain a quote. † Our goods come with guarantees that cannot be excluded under the Australian Consumer Law. You are entitled to a replacement or refund for a major failure and compensation for any other reasonably foreseeable loss or damage. You are also entitled to have the goods repaired or replaced if the goods fail to be of acceptable quality and the failure does not amount to a major failure. ‡ Eligibility criteria apply. See holden.com for full terms and conditions.



Bluetooth® is a registered trademark and logo of Bluetooth SIG, Inc.
iPod®, Apple CarPlay® and Apple® Maps are registered trademarks of Apple Inc.
Android®- Auto and Google Maps™ are registered trademarks of Google Inc.
Spotify® is a registered trademark of Spotify Australia Pty Ltd.
Cover image: Captiva LTZ in Nitrate Silver

A word about this brochure. We have tried to make this brochure as comprehensive and factual as possible. However, since the time of printing some of the information you'll find here may have been updated. Also, some of the equipment shown or described through this brochure may have been changed and/or is available at extra cost. Further, GM Holden Ltd ABN 84 006 893 232 (Holden), reserves the right to make changes at any time without notice, in prices, colours, materials, equipment and models. Your Holden Dealer has details, and before ordering, you should ask them to bring you up to date. No Holden Dealer or other person is authorised or permitted to give or make any statement, assertion or undertaking in relation to the quality, performance characteristics, descriptions or fitness for any purpose of any Holden product which is at variance with any written statement, assertion or undertaking on any of these subjects given or made by Holden in its published sales literature, and Holden does not accept any liability for any such unauthorised action. Holden has authorised Dealers in many parts of Australia for the sale of service parts and the provision of service to owners of Holden's products. Every endeavour is made to ensure that such Dealers carry adequate stocks of service parts, but Holden doesn't make any promise other than that contained in the New Vehicle Warranty given by Holden that such parts or service facilities will be available at any specific location or at any particular time. Express warranties offered for Holden products are subject to the conditions set out in all vehicle handbooks. Details also available from Holden on request. Copyright Holden, January 2017. HBR2588. AD13646.