

2022 GMC

YUKON



GMC

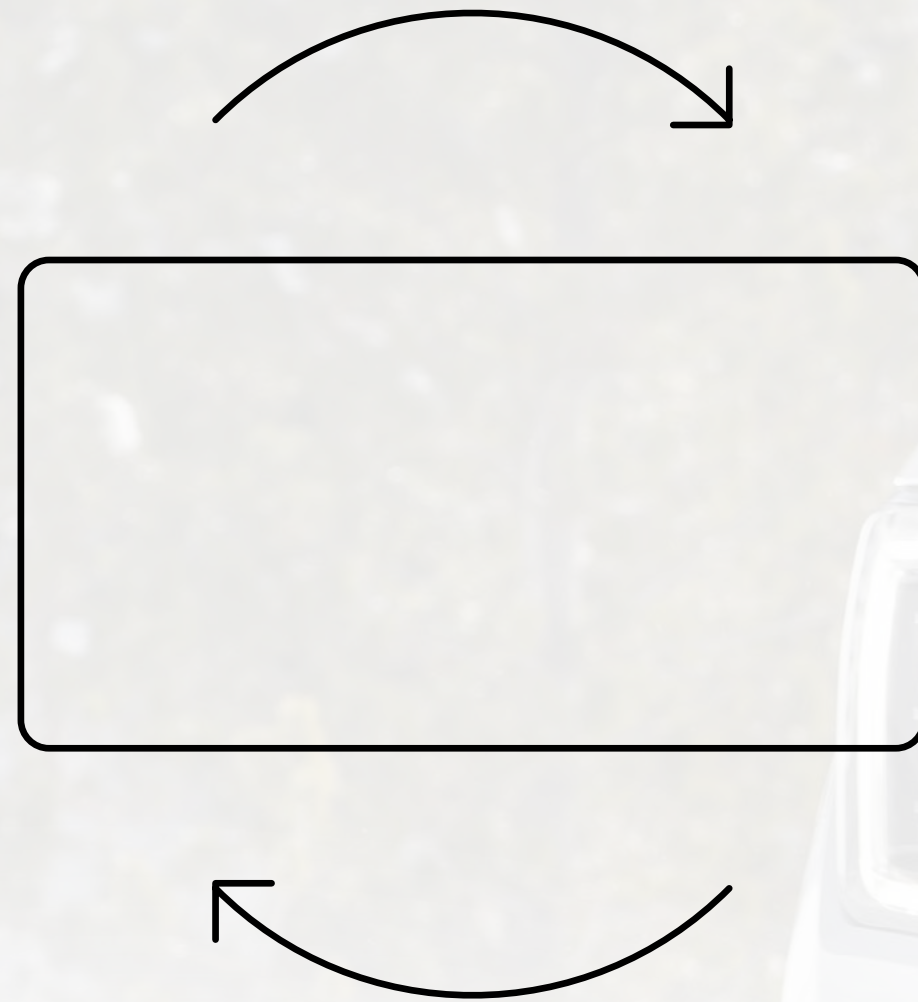
NAVIGATION GUIDE

3

CLICK THE HOME BUTTON TO RETURN TO THE TABLE OF CONTENTS.



1



ROTATE FOR A BETTER VIEWING EXPERIENCE.

— GMC Connected Services¹

2

CLICK ON UNDERLINED TEXT TO REVEAL IMPORTANT LEGAL INFORMATION.

4

CLICK THE X TO CLOSE DISCLAIMERS.

¹Connected services vary by vehicle model and require active service plan, working electrical system, cell reception and GPS signal. Does not include emergency or security services. See onstar.com for details and limitations.



YUKON

CONTENTS

CLICK ANY TITLE TO EXPLORE A SPECIFIC CHAPTER.

3	INTRODUCTION	21	VERSATILITY	33	EXTERIOR COLORS	40	IMPORTANT WORDS AND LEGAL DISCLOSURES
6	DENALI	24	TOWING	34	INTERIOR COLORS AND TEXTURES		
14	AT4	26	SAFETY AND TECHNOLOGY	35	WHEELS		
19	CAPABILITY	29	CONNECTIVITY	36	ACCESSORIES		

MEET THE 2022 GMC YUKON

The 2022 Yukon delivers premium accommodations, the latest available technologies and robust capability.



Due to current supply-chain shortages, certain features shown throughout this catalog, including on the cover, have limited or late availability, or are no longer available. See the window label or a dealer regarding the features on an individual vehicle.

PREMIUM AND CAPABLE

Live large in the big, bold 2022 Yukon. It's more than the ultimate premium SUV—it's a way of life. Yukon gives you powerful capability, available premium amenities and more of what you need—and want.



Due to current supply-chain shortages, certain features shown have limited or late availability, or are no longer available. See the window label or a dealer regarding the features on an individual vehicle.

LIVE LARGE IN YUKON



Yukon SLE provides advanced technology, bold style and the robust capability to make the most of every drive.



Yukon SLT is big, bold and beautiful with powerful capability and even more of what you love to help you keep on top of every day.



Yukon AT4 offers high-end luxury with the off-road capability to leave the limitations of the road behind.



Yukon Denali is beautifully appointed, technologically advanced and engineered to be the ultimate premium and capable SUV.

YUKON DENALI: KING OF THE ROAD

The magnificently appointed Yukon Denali elevates the ultimate premium SUV to even greater heights.



Due to current supply-chain shortages, certain features shown have limited or late availability, or are no longer available. See the window label or a dealer regarding the features on an individual vehicle.



DENALI

ABSOLUTELY DISTINCTIVE

AN EXCEPTIONAL EXPERIENCE

Yukon Denali's unique and exclusive interior offers striking design, sumptuous finishes and your choice of four color themes that make every day a big event.

The leather appointments are highlighted by stitching, which uses contrasting thread to create a meticulous Fractal, X-stitch pattern.

DENALI





Due to current supply-chain shortages, certain features shown have limited or late availability, or are no longer available. See the window label or a dealer regarding the features on an individual vehicle.

Make every trip a first-class affair with innovative features such as a power-sliding center console,¹ which slides back with the touch of a button to provide up to 10" of additional room.

- Four Denali-Exclusive Color Themes
- Authentic Wood and Aluminum Trim
- Fractal Stitching

- Power-Sliding Center Console¹
- Panoramic Sunroof Is Available

ENTERTAINED AND INFORMED

Intuitive technology helps keep you and your passengers effortlessly connected on the go.

- New 12" Diagonal Digital Driver Information Center
- Bose® 14-Speaker Centerpoint® Surround Sound
- Multicolor 15" Diagonal Head-Up Display



ELITE INSTRUMENTATION

The exclusive Yukon Denali dash is a seamless combination of aesthetics and function for the optimal display of both information and style.

Customize your Yukon Denali with a choice of four distinctive color themes featuring premium leather appointments and authentic wood details.



Teak/Light Shale



Dark Walnut/Very Dark Ash Gray



Brownstone/Jet Black



Jet Black/Jet Black



DESIGN THAT SPEAKS FOR ITSELF

The big, bold and beautiful Yukon Denali will leave you speechless—while its sculpted curves say: outgoing, strong, well-defined, spacious, active and capable.

Due to current supply-chain shortages, certain features shown have limited or late availability, or are no longer available. See the window label or a dealer regarding the features on an individual vehicle.

DENALI

REFINED DETAILS

- Dual Exhaust System With Dual Twin-Polished Stainless-Steel Tips (Gas Engine Only)
- LED Headlamps and Taillamps With Signature C-Shape Lighting
- Satin Chrome Grille, Bodyside Molding, Door Handles and Fog-Lamp Surround
- 20" Polished Aluminum Wheels; 22" Bright Machined Aluminum Wheels Are Available
- Illuminated Power-Retractable Assist Steps Are Available



BIG ADVENTURE AWAITS IN **YUKON AT4**

Adventure-ready, authentically capable and undeniably premium, Yukon has what you need to explore and discover what lies beyond the boundaries.

AT4



Due to current supply-chain shortages, certain features shown have limited or late availability, or are no longer available. See the window label or a dealer regarding the features on an individual vehicle.



Due to current supply-chain shortages, certain features shown have limited or late availability, or are no longer available. See the window label or a dealer regarding the features on an individual vehicle.



TACKLE TOUGH TERRAIN

- AT4-Specific Front Design Features Skid Plate and an Approach Angle of Nearly 32 Degrees
- 20" All-Terrain Tires

- 6.2L V8 Engine Is Available
- Four-Corner Air Ride Adaptive Suspension Is Available
- Active Response 4WD™ System Is Available



ROUGH IT IN REFINED STYLE

Due to current supply-chain shortages, certain features shown have limited or late availability, or are no longer available. See the window label or a dealer regarding the features on an individual vehicle.



UPGRADE YOUR ADVENTURES

Hit the trails in Yukon AT4's Jet Black interior with AT4-exclusive Brandy accents and dark brushed aluminum details designed to help you explore in comfort.

AT4

Due to current supply-chain shortages, certain features shown have limited or late availability, or are no longer available. See the window label or a dealer regarding the features on an individual vehicle.

EXCLUSIVE AT4 CABIN OFFERS:

- Dark Brushed Aluminum Details
- Durable Jet Black Interior With Brandy Seat and Stitching Accents
- Heated and Ventilated Front Perforated Leather Seating Surfaces¹
- Multicolor 15" Diagonal Head-Up Display With an Off-Road Inclinometer Is Available
- High Definition Surround Vision² Is Available

AT4



Due to current supply-chain shortages, certain features shown have limited or late availability, or are no longer available. See the window label or a dealer regarding the features on an individual vehicle.



THE POWER YOU NEED

Yukon's robust power—provided by an available 6.2L V8 engine, delivering 420 hp—is just begging to be unleashed.

And paired with a 10-speed automatic transmission, it gives you 460 lb-ft of torque so going big is always on the table.

Due to current supply-chain shortages, certain features shown have limited or late availability, or are no longer available. See the window label or a dealer regarding the features on an individual vehicle.



Confidently maneuver in slick or off-road conditions with an available Active Response 4WD system that seamlessly sends optimal torque to each wheel to improve traction.

- 10-Speed Automatic Transmission
- 5.3L V8 With 355 hp and 383 lb-ft of Torque
- 6.2L V8 With 420 hp and 460 lb-ft of Torque Is Available
- 3.0L Duramax Turbo Diesel With 277 hp and 460 lb-ft of Torque Is Available
- Four-Corner Air Ride Adaptive Suspension Is Available

Due to current supply-chain shortages, certain features shown have limited or late availability, or are no longer available. See the window label or a dealer regarding the features on an individual vehicle.



144.7 CU. FT.



THE ROOM YOU NEED

—
Yukon gives you up to 122.9 cu. ft. and Yukon XL offers up to 144.7 cu. ft. of generous, easily accessible max cargo room¹ with both rear rows folded down.

LIVE EVEN LARGER WITH YUKON XL

Upsize your life with Yukon XL, featuring more cargo room behind the first, second and third rows, a more spacious cabin, more flexible cargo space and more fuel capacity than Yukon.



Due to current supply-chain shortages, certain features shown have limited or late availability, or are no longer available. See the window label or a dealer regarding the features on an individual vehicle.

EASY ACCESS

Enjoy added convenience with the available hands-free programmable power liftgate with GMC logo projection, which opens with just a kick of your foot.

With seating for up to nine,¹ second-row seats that offer an available power-release fold-and-tumble feature and available third-row power fold-flat seats, the transition from passengers to cargo is effortless.



Due to current supply-chain shortages, certain features shown have limited or late availability, or are no longer available. See the window label or a dealer regarding the features on an individual vehicle.

POWERFUL CAPABILITY AND ADVANCED TECHNOLOGY TO TOW UP TO 8,400 LBS

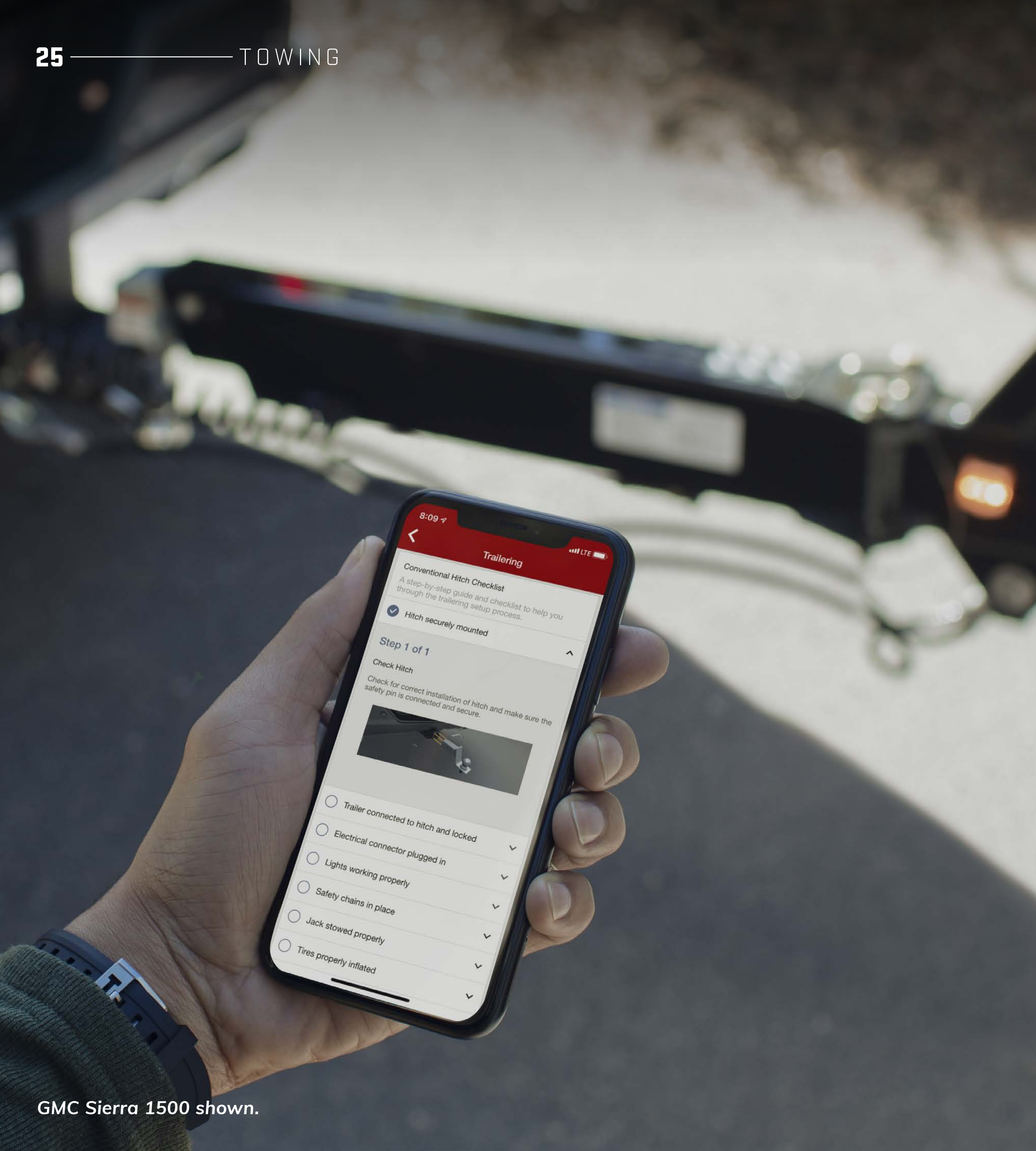
Large living sometimes needs large gear, and Yukon is engineered to pull big—up to 8,400 lbs.¹

And with the available ProGrade™ Trailering System to help you keep tabs on Yukon and your trailer with up to 13 available camera views,² you can do it with confidence.

Thirteen camera views not available on vehicle shown.



Due to current supply-chain shortages, certain features shown have limited or late availability, or are no longer available. See the window label or a dealer regarding the features on an individual vehicle.



GMC Sierra 1500 shown.

TRAILER TECH

Create custom trailer profiles with the available in-vehicle Trailing App¹ integrated into Yukon's infotainment system,² and find maintenance reminders, predeparture checklists, a Trailer Light Sequence Test and a Trailer Tire Pressure Monitoring System.³

SMART TRAILER INTEGRATION

The ASA Electronics iN•Command[®] Control System,⁴ available on Yukon, is designed to integrate with and be accessible through the myGMC mobile app⁵ (on compatible iPhone[®] and Android[™] smartphones) or on your vehicle's infotainment system via Apple CarPlay^{®6} and Android Auto^{™7}. The iN•Command Control System allows you to monitor and control a range of smart system functions such as water tank levels, climate controls and power slide-outs in recreational trailers equipped with GlobalConnect technology.

UP TO 13 AVAILABLE CAMERA VIEWS¹

1. SURROUND VIEW
2. REAR CAMERA MIRROR
3. FRONT CAMERA VIEW
4. REAR CAMERA VIEW
5. FRONT TOP-DOWN VIEW
6. REAR TOP-DOWN VIEW
7. FRONT SIDE VIEW
8. REAR SIDE VIEW
9. HITCH GUIDANCE WITH HITCH VIEW
10. TRANSPARENT TRAILER VIEW (REQUIRES COMPATIBLE CONVENTIONAL TRAILER)
11. INSIDE TRAILER VIEW
12. REAR TRAILER VIEW
13. PICTURE-IN-PICTURE VIEW

Safety or driver-assistance features are no substitute for the driver's responsibility to operate the vehicle in a safe manner. The driver should remain attentive to traffic, surroundings and road conditions at all times. Visibility, weather and road conditions may affect feature performance. Read the vehicle Owner's Manual for more important feature limitations and information.



BIG-TIME PEACE OF MIND

Living large means traveling with a higher level of confidence—that's why Yukon enhances your awareness of the road and surrounding vehicles with GMC Pro Safety Plus,¹ a suite of available advanced collision-avoidance and driver-assistance technologies.



Due to current supply-chain shortages, certain features shown have limited or late availability, or are no longer available. See the window label or a dealer regarding the features on an individual vehicle.

GMC PRO SAFETY PLUS¹ IS STANDARD ON SLT, AT4 AND DENALI AND INCLUDES:

- Lane Change Alert With Side Blind Zone Alert
- Lane Keep Assist With Lane Departure Warning
- Rear Cross Traffic Alert
- Automatic Emergency Braking
- Forward Collision Alert
- Rear Park Assist (Feature Will Not Function on Certain Models Without Dealer Retrofit; See Dealer for Details)
- Following Distance Indicator
- Front Pedestrian Braking
- IntelliBeam—Auto High Beams



KEEP YOUR CONNECTION STRONG

Enjoy the experience of a seamlessly connected drive. GMC Connected Services¹ elevates your ownership experience.

YUKON OFFERS:

- New Google built-in² Compatibility With Google Maps
- GMC Connected Services¹
- myGMC Mobile App³
- Wi-Fi® Hotspot⁴
- In-Vehicle Apps⁵ Such as Spotify^{®6}



Due to current supply-chain shortages, certain features shown have limited or late availability, or are no longer available. See the window label or a dealer regarding the features on an individual vehicle.

STAY IN COMMAND WHEREVER THE ACTION LEADS

- 10.2" Diagonal Premium GMC Infotainment System¹
- Wireless Apple CarPlay® Compatibility²
- Wireless Android Auto Compatibility³
- Google built-in⁴ Is Available
- Wireless Charging⁵ Is Available



Due to current supply-chain shortages, certain features shown have limited or late availability, or are no longer available. See the window label or a dealer regarding the features on an individual vehicle.





GET THERE WITH GOOGLE BUILT-IN

Available Google built-in¹ compatibility is now fully integrated into the GMC Infotainment System.² With Google built-in, you will receive a helpful, personalized and seamless way to enhance your in-vehicle experience. With Google Assistant, Google Maps and Google Play, you get access to hands-free help, live traffic updates, some of your favorite apps and more.

HELP WHEN YOU NEED IT

With available OnStar® Safety and Security, you'll have added peace of mind knowing an Emergency-Certified Advisor¹ is ready to help. Whether it's a crash, a vehicle theft or an emergency situation, help is available 24/7.

The Safety & Security Plan² includes the OnStar Guardian™ App,³ which lets you bring the key OnStar safety services you depend on into any vehicle. Help in a crash, assistance with a flat tire and more are available through your smartphone. Best of all, you can share OnStar Guardian with up to seven of your loved ones at no additional cost.



FIND YOUR TRUE COLORS



SUMMIT
WHITE



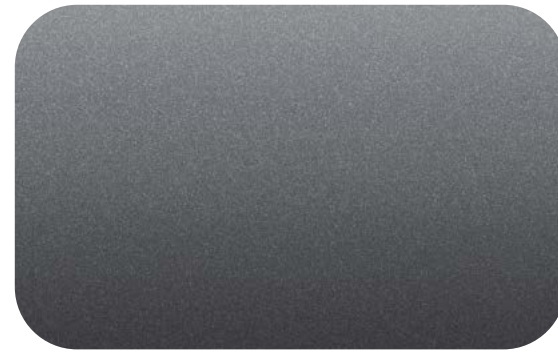
ONYX
BLACK¹



PEARL BEIGE
METALLIC^{1,2}



MIDNIGHT BLUE
METALLIC¹



SATIN STEEL
METALLIC¹



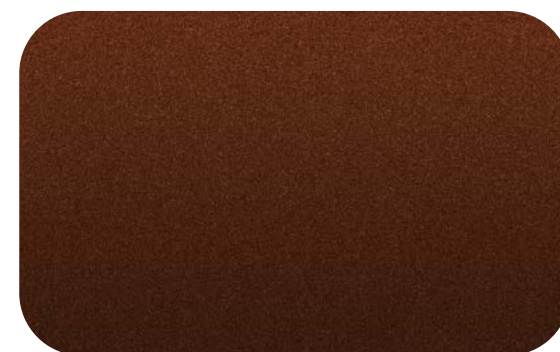
CAYENNE RED
TINTCOAT¹



HUNTER
METALLIC^{1,3}



WHITE FROST
TRICOAT^{1,4}



REDWOOD
METALLIC¹

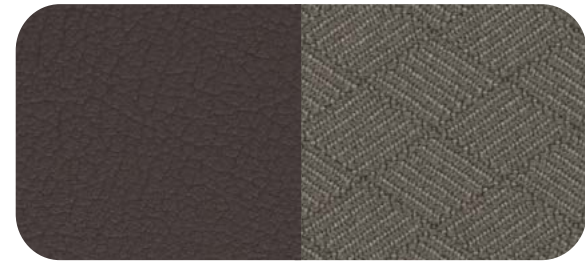


Denali shown in Hunter Metallic.

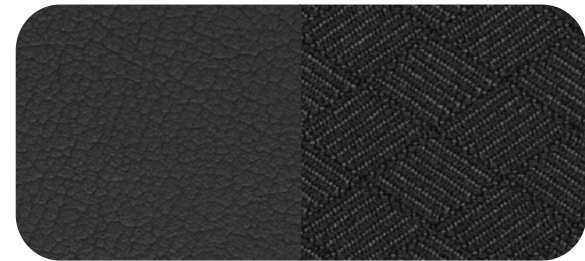
See your GMC dealer or [gmc.com](https://www.gmc.com) for more exterior color details.

Due to current supply-chain shortages, certain features shown have limited or late availability, or are no longer available. See the window label or a dealer regarding the features on an individual vehicle.

SLE



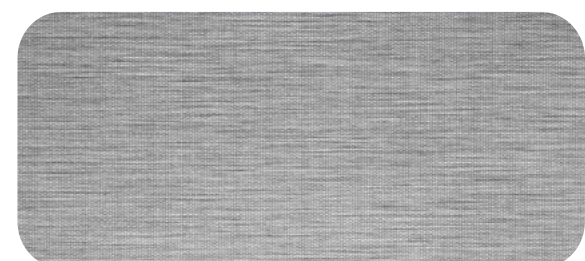
DARK WALNUT/
SLATE CLOTH



JET BLACK/
JET BLACK CLOTH

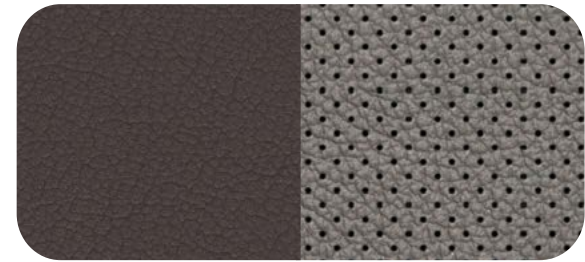


KAITAIN LINE TONE

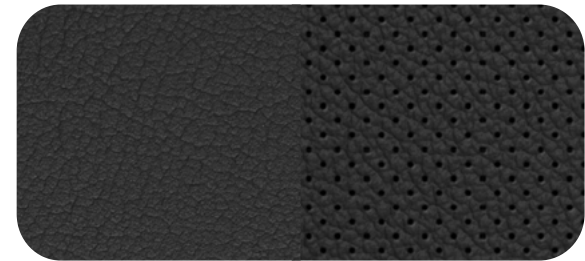


AEGIS PATTERNED
ALUMINUM

SLT



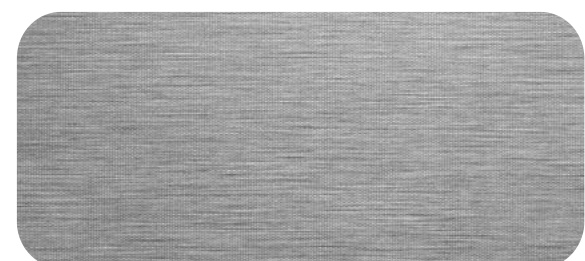
DARK WALNUT/
SLATE FRONT PERFORATED
LEATHER-APPOINTED



JET BLACK/JET BLACK
FRONT PERFORATED
LEATHER-APPOINTED

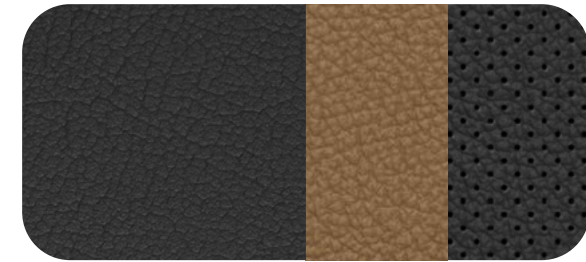


CALADAN TONE



AEGIS PATTERNED
ALUMINUM

AT4



JET BLACK/JET BLACK FRONT
PERFORATED LEATHER SEATING
SURFACES WITH BRANDY ACCENTS

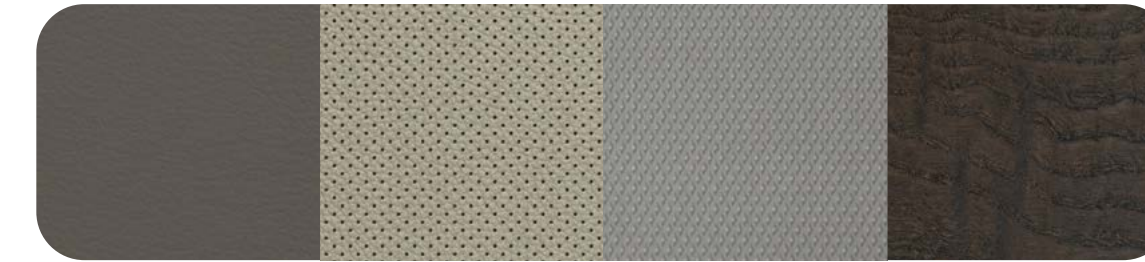


TECHNICAL
APPEARANCE

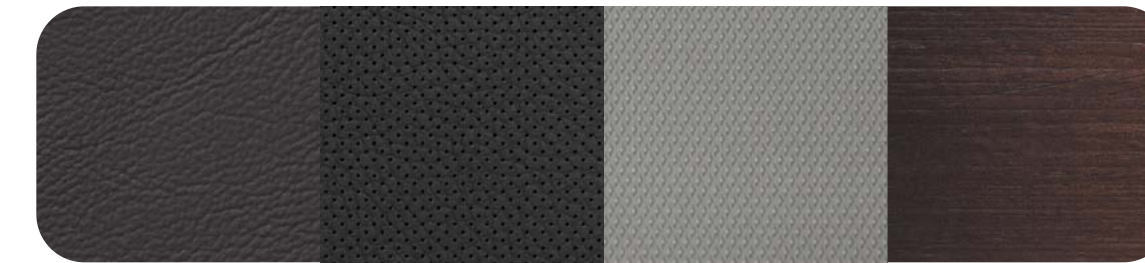


DARK BRUSHED
ALUMINUM

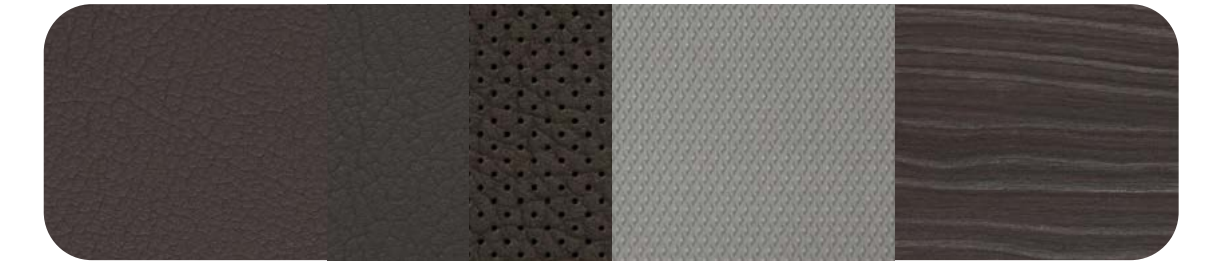
DENALI



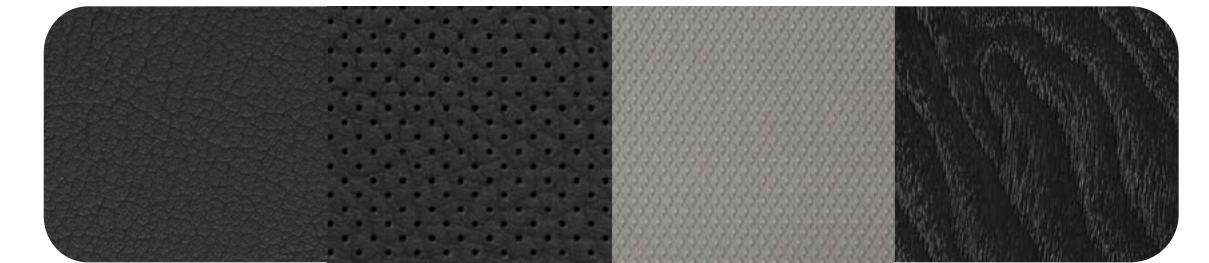
TEAK/LIGHT SHALE FRONT PERFORATED
LEATHER SEATING SURFACES
ATREIDES PATTERNED ALUMINUM
PANDION ASH WOOD



BROWNSTONE/JET BLACK
FRONT PERFORATED LEATHER
SEATING SURFACES
ATREIDES PATTERNED ALUMINUM
ACCIPITER OMBRE WOOD



DARK WALNUT/VERY DARK ASH GRAY
FRONT PERFORATED LEATHER
SEATING SURFACES
ATREIDES PATTERNED ALUMINUM
GALLINAGO PLANK WOOD



JET BLACK/JET BLACK
FRONT PERFORATED LEATHER
SEATING SURFACES
ATREIDES PATTERNED ALUMINUM
ANHINGA ASH WOOD

PRECISION-CRAFTED FROM THE GROUND UP



18"

18" 6-SPOKE MACHINED ALUMINUM WITH DARK GRAY METALLIC ACCENTS (UHN) Standard on SLE



20"

20" 6-SPOKE POLISHED ALUMINUM (NZG)
Standard on SLT;
Available on SLE



20"

20" 6-SPOKE POLISHED ALUMINUM (NZM)
Available on SLT



20"

20" 6-SPOKE MACHINED ALUMINUM WITH CARBON GRAY METALLIC ACCENTS (NZH) Standard on AT4



20"

20" 6-SPOKE MULTIDIMENSIONAL POLISHED ALUMINUM (RTL) Standard on Denali



22"

22" BRIGHT MACHINED ALUMINUM WITH PREMIUM PAINT (RPU)
Available on Denali

YOUR YUKON. YOUR STYLE.

GMC Accessories are a great way to personalize your Yukon—inside and out. They're designed and engineered to meet the Professional Grade standards of your Yukon, as well as your own. We also offer accessories from a lineup of other renowned and proven manufacturers.

Find a full selection of Yukon accessories at gmc.com/accessories.



Accessories shown: accessory roof rack crossrails and Thule® roof-mounted ski and snowboard carrier.

Due to current supply-chain shortages, certain features shown have limited or late availability, or are no longer available. See the window label or a dealer regarding the features on an individual vehicle.

**ACCESSORY FIRST-ROW PREMIUM
ALL-WEATHER FLOOR LINER**



**ACCESSORY CHROME MIRROR
COVERS, 22" MULTI-SPOKE CHROME
WHEELS,¹ ILLUMINATED MIRROR GMC
EMBLEM AND FRONT SPLASH GUARD**



**ACCESSORY ROOF RACK
CROSSRAILS AND THULE[®]
ROOF-MOUNTED CARGO BOX**



**ACCESSORY INTEGRATED
CARGO LINER**



Due to current supply-chain shortages, certain features shown have limited or late availability, or are no longer available. See the window label or a dealer regarding the features on an individual vehicle.

POWERED BY PROFESSIONAL GRADE



SIERRA HEAVY DUTY

CANYON

SIERRA 1500 LIMITED

YUKON

TERRAIN

ACADIA

Hunter Metallic color shown on Canyon Denali is limited availability.

Due to current supply-chain shortages, certain features shown have limited or late availability, or are no longer available. See the window label or a dealer regarding the features on an individual vehicle.

DRIVE THE CONVERSATION

#GMCYUKON | #DENALI | #AT4



Share your GMC experience and get in on the action.

Due to current supply-chain shortages, certain features shown on this spread have limited or late availability, or are no longer available. See the window label or a dealer regarding the features on an individual vehicle.



GMC
@GMC

Keep the next peak in sight.
#MotivationMonday #GMCYukon #AT4



GMC
May 21 at 7:15 AM · 🌐

Keep your cool, even in the Valley of Fire. GMC Yukon Denali.
<https://s.gmc.com/8m9sv>



IMPORTANT WORDS AND LEGAL DISCLOSURES

NEW VEHICLE LIMITED WARRANTY

3-YEAR/36,000-MILE BUMPER-TO-BUMPER LIMITED WARRANTY GMC will warrant each 2022 Yukon from bumper to bumper for 3 years/36,000 miles (whichever comes first; see dealer for details), with no deductible, from the original in-service date of the vehicle, for warrantable repairs that are required as a result of defects due to materials and/or workmanship. Cosmetic corrosion resulting from defects is also covered under the Bumper-to-Bumper Limited Warranty. In addition, rust-through corrosion will be covered for 6 years/100,000 miles (whichever comes first; see dealer for details).

POWERTRAIN LIMITED WARRANTY Every 2022 GMC Yukon comes with a 5-year/60,000-mile (whichever comes first) transferable Powertrain Limited Warranty. 24/7 Roadside Assistance and Courtesy Transportation are also offered for the duration of the Powertrain Limited Warranty. 6.6L Duramax Turbo Diesel engines are covered by a 5-year/100,000-mile (whichever comes first) transferable Powertrain Limited Warranty. 24/7 Roadside Assistance and Courtesy Transportation are also offered for the duration of the Powertrain Limited Warranty. Please see your GMC dealer for details.

ONSTAR® AND GMC CONNECTED SERVICES

Connected vehicle services vary by vehicle model and require working electrical system, cell reception and GPS signal. Requires active service plan. OnStar links to emergency services. See onstar.com for details and limitations.

GMC CERTIFIED SERVICE

To help your Yukon live up to its performance promise, GMC Certified Service—found exclusively at your GMC dealer—is there. With all the engineering excellence in Yukon, GM-trained technicians have the expertise to help care for it.

ADDITIONAL NOTES

A NOTE ON CHILD SAFETY Always use seat belts and the correct child restraint for your child's age and size, even with airbags. Even in vehicles equipped with the Passenger Sensing System, children are safer when properly secured in a rear seat in the appropriate infant, child or booster seat. Never place a rear-facing infant restraint in the front seat of any vehicle equipped with an active frontal airbag. See the Owner's Manual and the child safety seat instructions for more safety information.

TRAILERING AND OFF-ROAD DRIVING INFORMATION Please go to gmc.com and carefully review the vehicle Owner's Manual for important safety information about trailering or off-road driving in your vehicle.

FLEET ORDERS Some standard content may be deleted on fleet orders. See dealer for details.

ENGINES GMC products are equipped with engines produced by GM Powertrain or other suppliers to GM worldwide. The engines in GMC products may also be used in other GM makes and models.

GMC.COM See more of Yukon on our website: gmc.com/yukon. More photos and information; hot links to related subjects; convenient dealer locator; pricing guide; spec out your own vehicle. Or call 1-800-GMC-8782.

IMPORTANT WORDS ABOUT THIS CATALOG We have tried to make this catalog comprehensive and factual. We reserve the right, however, to make changes at any time, without notice, in prices, colors, materials, equipment, specifications, models and availability. Specifications, dimensions, measurements, ratings and other numbers in this catalog and other printed materials provided at the dealership or affixed to vehicles are approximations based on design and engineering drawings, prototypes and laboratory tests. Your vehicle may differ due to variations in manufacture and equipment. Since some information may have been updated since the time of publication, please check with your GMC dealer for complete details. GMC reserves the right to lengthen or shorten the model year for any product for any reason or to start and end model years at different times. Certain vehicle features may lose their usefulness over time due to obsolescence from technological changes. Unless otherwise noted, all claims based on GM Large SUV segment and latest available competitive information available at time of publication. Excludes other GM vehicles.

AN IMPORTANT NOTE ABOUT ALTERATIONS AND WARRANTIES Installations or alterations to the original equipment vehicle (or chassis) as distributed by General Motors are not covered by the General Motors New Vehicle Limited Warranty. The special body company, assembler, equipment installer or upfitter is solely responsible for warranties on the body or equipment and any alterations (or any effect of the alterations) to any of the parts, components, systems or assemblies installed by GM. General Motors is not responsible for the safety or quality of design, features, materials or workmanship of any alterations by such employers.

ASSEMBLY GMC vehicles and their components are assembled or produced by different operating units of General Motors, its subsidiaries or suppliers to GM worldwide. We sometimes find it necessary to produce GMC vehicles with different or differently sourced components than originally scheduled. Since some options may be unavailable when your vehicle is assembled, we suggest you verify that your vehicle includes the equipment you ordered and that, if there were changes, they are acceptable to you.

GMMOBILITY.COM (1-800-323-9935) GM Mobility offers financial assistance for eligible adaptive equipment to make automotive travel easier for persons with disabilities or special transportation needs. To learn more about special GM Mobility offers, visit gmmobility.com.

©2022 General Motors. All rights reserved. GM, the GM logo, GMC, the slogans, emblems, vehicle model names, vehicle body designs and other marks appearing in this catalog are the trademarks and/or service marks of General Motors, its subsidiaries, affiliates or licensors. Facebook is a registered trademark of Facebook, Inc. Twitter is a registered trademark of Twitter, Inc. Instagram is a registered trademark of Instagram, LLC. Sirius, XM and all related marks and logos are trademarks of SiriusXM Radio, Inc. Google, Android, YouTube, Android Auto and other marks are trademarks of Google LLC. Apple, CarPlay, iPhone and Siri are registered trademarks of Apple, Inc.



Due to current supply-chain shortages, certain features shown have limited or late availability, or are no longer available. See the window label or a dealer regarding the features on an individual vehicle.

Make every trip a first-class affair with innovative features such as a power-sliding center console,¹ which slides back with the touch of a button to provide up to 10" of additional room.

- Four Denali-Exclusive Color Themes
- Authentic Wood and Aluminum Trim
- Fractal Stitching

- Power-Sliding Center Console¹
- Panoramic Sunroof Is Available

¹Limited availability.



EXCLUSIVE AT4 CABIN OFFERS:

- Dark Brushed Aluminum Details
- Durable Jet Black Interior With Brandy Seat and Stitching Accents
- Heated and Ventilated Front Perforated Leather Seating Surfaces¹
- Multicolor 15" Diagonal Head-Up Display With an Off-Road Inclinometer Is Available
- High Definition Surround Vision² Is Available



Due to current supply-chain shortages, certain features shown have limited or late availability, or are no longer available. See the window label or a dealer regarding the features on an individual vehicle.

¹Feature will not function on certain models without dealer retrofit. See dealer for details. ²Safety or driver-assistance features are no substitute for the driver's responsibility to operate the vehicle in a safe manner. Read the vehicle Owner's Manual for important feature limitations and information.





144.7 CU. FT.



THE ROOM YOU NEED

—
Yukon gives you up to 122.9 cu. ft. and Yukon XL offers up to 144.7 cu. ft. of generous, easily accessible max cargo room¹ with both rear rows folded down.

¹Cargo and load capacity limited by weight and distribution.



EASY ACCESS

Enjoy added convenience with the available hands-free programmable power liftgate with GMC logo projection, which opens with just a kick of your foot.

With seating for up to nine,¹ second-row seats that offer an available power-release fold-and-tumble feature and available third-row power fold-flat seats, the transition from passengers to cargo is effortless.



Due to current supply-chain shortages, certain features shown have limited or late availability, or are no longer available. See the window label or a dealer regarding the features on an individual vehicle.



¹Nine-person seating on SLE with available front bench seat.



POWERFUL CAPABILITY AND ADVANCED TECHNOLOGY TO TOW UP TO 8,400 LBS

Large living sometimes needs large gear, and Yukon is engineered to pull big—up to 8,400 lbs.¹

And with the available ProGrade™ Trailing System to help you keep tabs on Yukon and your trailer with up to 13 available camera views,² you can do it with confidence.

Thirteen camera views not available on vehicle shown.



¹Requires Yukon 2WD with 5.3L engine and available Max Trailering Package. Maximum trailering ratings are intended for comparison purposes only. Before you buy a vehicle or use it for trailering, carefully review the trailering section of the Owner's Manual. The trailering capacity of your specific vehicle may vary. The weight of passengers, cargo and options or accessories may reduce the amount you can trailer. ²Safety or driver-assistance features are no substitute for the driver's responsibility to operate the vehicle in a safe manner. Read the vehicle Owner's Manual for important feature limitations and information. Some camera views require available accessory camera and installation. Not compatible with all trailers. See your dealer for details.

Due to current supply-chain shortages, certain features shown have limited or late availability, or are no longer available. See the window label or a dealer regarding the features on an individual vehicle.

TRAILER TECH

Create custom trailer profiles with the available in-vehicle Trailing App¹ integrated into Yukon's infotainment system,² and find maintenance reminders, predeparture checklists, a Trailer Light Sequence Test and a Trailer Tire Pressure Monitoring System.³

SMART TRAILER INTEGRATION

The ASA Electronics iN•Command[®] Control System,⁴ available on Yukon, is designed to integrate with and be accessible through the myGMC mobile app⁵ (on compatible iPhone[®] and Android[™] smartphones) or on your vehicle's infotainment system via Apple CarPlay^{®6} and Android Auto^{™7}. The iN•Command Control System allows you to monitor and control a range of smart system functions such as water tank levels, climate controls and power slide-outs in recreational trailers equipped with GlobalConnect technology.

¹App functionality and features vary with vehicle equipment and trim level. Data connection may be required. Some features require active service plan and working electrical system. User terms and limitations apply.

²Functionality varies by model. Full functionality requires compatible Bluetooth[®] and smartphone, and USB connectivity for some devices.

³Requires available Trailer Tire Pressure Monitoring System and installation of trailer tire pressure monitor sensors. ⁴iN•Command is provided

by ASA Electronics and is designed to operate within 30 feet of the trailer. Works with trailers equipped with the iN•Command Control System with GlobalConnect via Bluetooth connection. Control and monitoring functionality varies by trailer manufacturer, model and installed options.

Use of the iN•Command Control System feature through the myGMC mobile app requires active service plan. User terms apply. See onstar.com for details and limitations. ⁵Device data connection required. Available

on select Apple[®] and Android[™] devices. Some features require active service plan and working electrical system. Service availability, features and functionality vary by vehicle. Terms apply. See onstar.com for details and limitations. ⁶Vehicle user interface is a product of Apple[®] and its

terms and privacy statements apply. Requires compatible iPhone[®] and data plan rates apply. Apple CarPlay, Siri, iPhone and Apple Music are trademarks of Apple, Inc., registered in the U.S. and other countries.

⁷Vehicle user interface is a product of Google and its terms and privacy statements apply. Requires the Android Auto app on Google Play and a compatible Android smartphone. Data plan rates apply. You can check which smartphones are compatible at g.co/androidauto/requirements.

Android, Google Play and Android Auto are trademarks of Google LLC.



UP TO 13 AVAILABLE CAMERA VIEWS¹

1. SURROUND VIEW
2. REAR CAMERA MIRROR
3. FRONT CAMERA VIEW
4. REAR CAMERA VIEW
5. FRONT TOP-DOWN VIEW
6. REAR TOP-DOWN VIEW
7. FRONT SIDE VIEW
8. REAR SIDE VIEW
9. HITCH GUIDANCE WITH HITCH VIEW
10. TRANSPARENT TRAILER VIEW
(REQUIRES COMPATIBLE
CONVENTIONAL TRAILER)
11. INSIDE TRAILER VIEW
12. REAR TRAILER VIEW
13. PICTURE-IN-PICTURE VIEW

Safety or driver-assistance features are no substitute for the driver's responsibility to operate the vehicle in a safe manner. The driver should remain attentive to traffic, surroundings and road conditions at all times. Visibility, weather and road conditions may affect feature performance. Read the vehicle Owner's Manual for more important feature limitations and information.



¹Some camera views require available accessory camera and installation. Not compatible with all trailers. See your dealer for details.



BIG-TIME PEACE OF MIND

Living large means traveling with a higher level of confidence—that's why Yukon enhances your awareness of the road and surrounding vehicles with GMC Pro Safety Plus,¹ a suite of available advanced collision-avoidance and driver-assistance technologies.



¹GMC Pro Safety Plus: Automatic Emergency Braking, Lane Keep Assist with Lane Departure Warning, Forward Collision Alert, Front Pedestrian Braking, Following Distance Indicator, IntelliBeam, Lane Change Alert with Side Blind Zone Alert, Rear Cross Traffic Alert and Rear Park Assist (feature will not function on certain models without dealer retrofit; see dealer for details). Safety or driver-assistance features are no substitute for the driver's responsibility to operate the vehicle in a safe manner. Read the vehicle Owner's Manual for important feature limitations and information.



Due to current supply-chain shortages, certain features shown have limited or late availability, or are no longer available. See the window label or a dealer regarding the features on an individual vehicle.

GMC PRO SAFETY PLUS¹ IS STANDARD ON SLT, AT4 AND DENALI AND INCLUDES:

- Lane Change Alert With Side Blind Zone Alert
- Lane Keep Assist With Lane Departure Warning
- Rear Cross Traffic Alert
- Automatic Emergency Braking
- Forward Collision Alert
- Rear Park Assist (Feature Will Not Function on Certain Models Without Dealer Retrofit; See Dealer for Details)
- Following Distance Indicator
- Front Pedestrian Braking
- IntelliBeam—Auto High Beams



Due to current supply-chain shortages, certain features shown have limited or late availability, or are no longer available. See the window label or a dealer regarding the features on an individual vehicle.



¹Safety or driver-assistance features are no substitute for the driver's responsibility to operate the vehicle in a safe manner. Read the vehicle Owner's Manual for important feature limitations and information.



KEEP YOUR CONNECTION STRONG

Enjoy the experience of a seamlessly connected drive. GMC Connected Services¹ elevates your ownership experience.

YUKON OFFERS:

- New Google built-in² Compatibility With Google Maps
- GMC Connected Services¹
- myGMC Mobile App³
- Wi-Fi® Hotspot⁴
- In-Vehicle Apps⁵ Such as Spotify⁶

¹Connected services vary by vehicle model and require active service plan, working electrical system, cell reception and GPS signal. Does not include emergency or security services. See onstar.com for details and limitations. ²Google built-in services are subject to limitations, and availability may vary by vehicle, infotainment system and location. Select service plan required. Certain Google actions and functionality may require account linking. User terms and privacy statements apply. Google, Google Play and Google Maps are trademarks of Google LLC. ³Available on select Apple® and Android™ devices. Service availability, features and functionality vary by vehicle, device and the plan you are enrolled in. Terms apply. Device data connection required. See onstar.com for details and limitations. ⁴Service varies with conditions and location. Requires active service plan and paid AT&T® data plan. See onstar.com for details and limitations. ⁵Available on select 2017 model year and newer GM vehicles with compatible hardware. Third-party trademarks are the property of their respective third-party owners and used under agreement. Requires active service plan and paid AT&T vehicle data plan. See onstar.com for details and limitations. ⁶Spotify app requires active Spotify account. Visit spotify.com/auto on your smartphone, tablet or computer for terms and to set up an account. Available on select model year 2018 and newer infotainment systems with compatible hardware. Select service plan required.

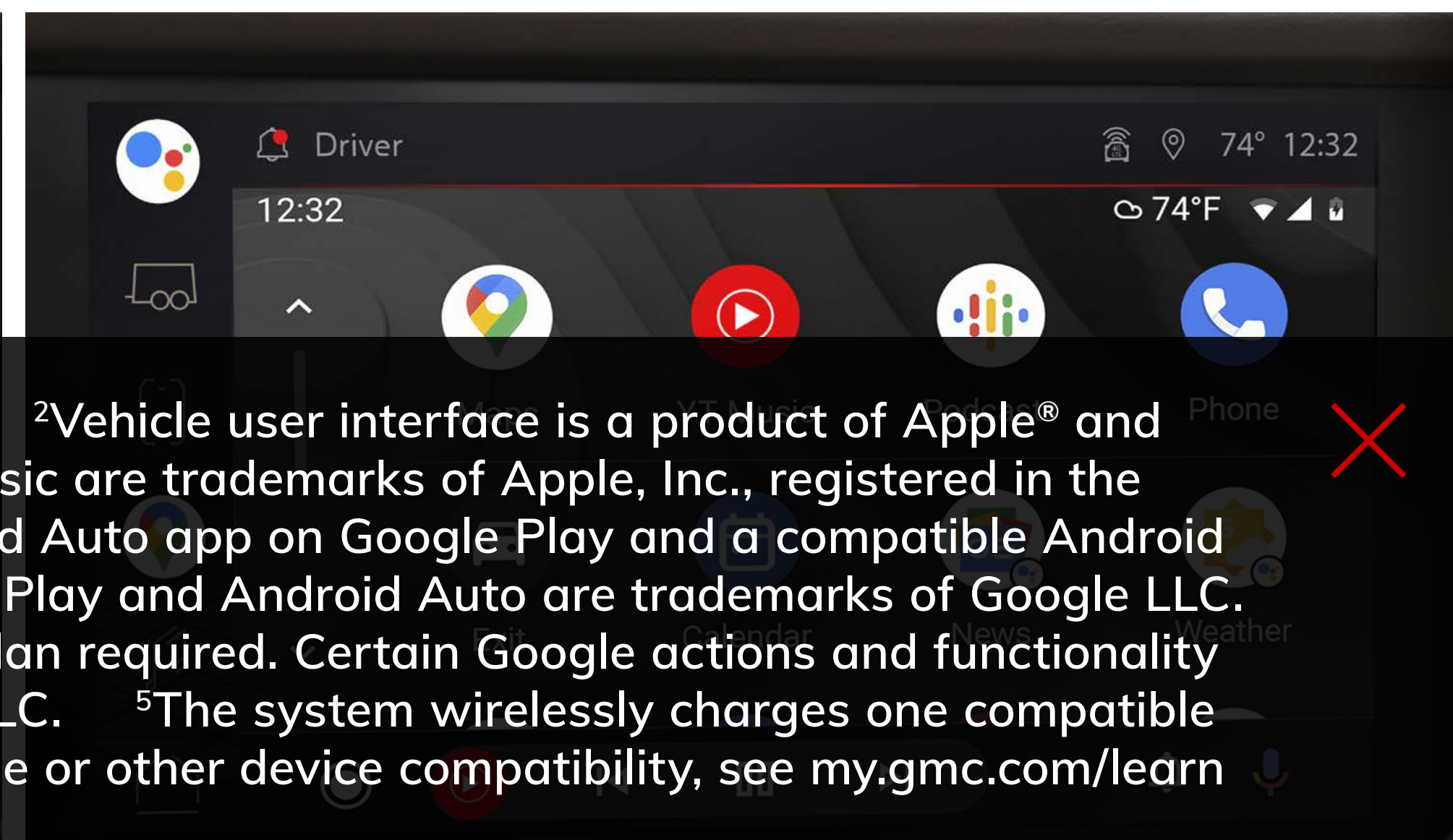
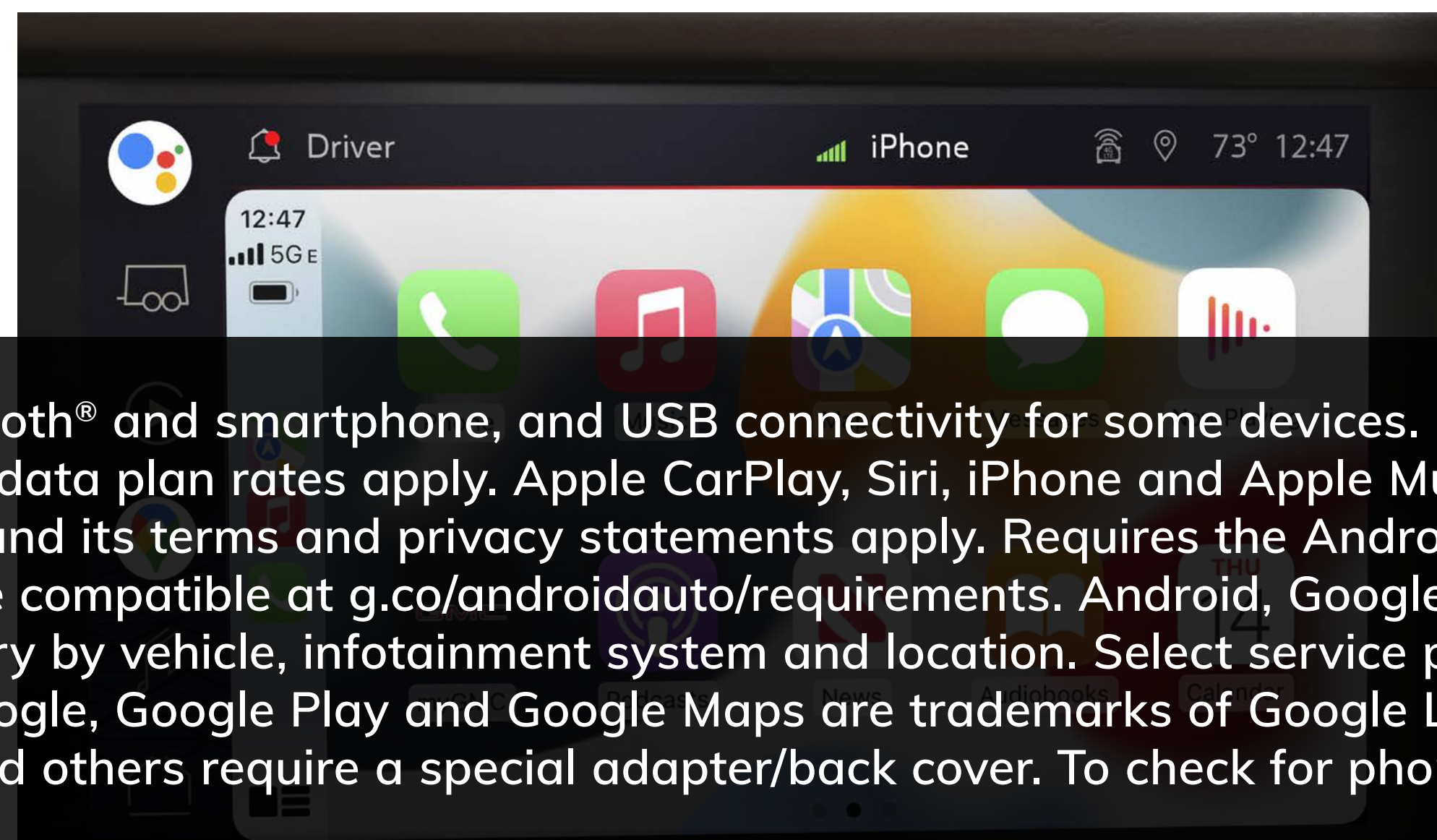


STAY IN COMMAND WHEREVER THE ACTION LEADS

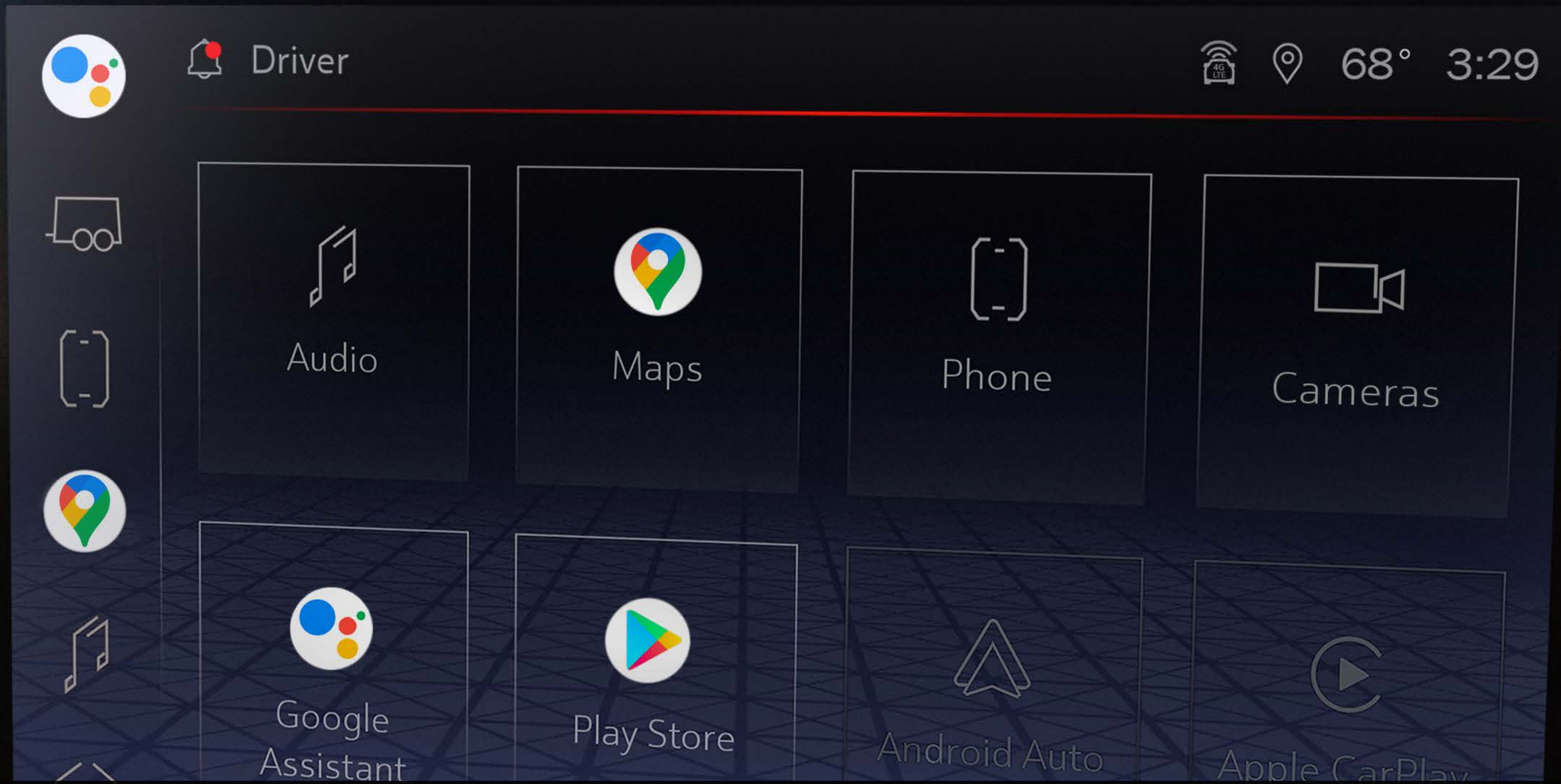
- 10.2" Diagonal Premium GMC Infotainment System¹
- Wireless Apple CarPlay® Compatibility²
- Wireless Android Auto Compatibility³
- Google built-in⁴ Is Available
- Wireless Charging⁵ Is Available



Due to current supply-chain shortages, certain features shown have limited or late availability, or are no longer available. See the window label or a dealer regarding the features on an individual vehicle.



¹Functionality varies by model. Full functionality requires compatible Bluetooth® and smartphone, and USB connectivity for some devices. ²Vehicle user interface is a product of Apple® and its terms and privacy statements apply. Requires compatible iPhone® and data plan rates apply. Apple CarPlay, Siri, iPhone and Apple Music are trademarks of Apple, Inc., registered in the U.S. and other countries. ³Vehicle user interface is a product of Google and its terms and privacy statements apply. Requires the Android Auto app on Google Play and a compatible Android smartphone. Data plan rates apply. You can check which smartphones are compatible at g.co/androidauto/requirements. Android, Google Play and Android Auto are trademarks of Google LLC. ⁴Google built-in services are subject to limitations, and availability may vary by vehicle, infotainment system and location. Select service plan required. Certain Google actions and functionality may require account linking. User terms and privacy statements apply. Google, Google Play and Google Maps are trademarks of Google LLC. ⁵The system wirelessly charges one compatible mobile device. Some phones have built-in wireless charging technology and others require a special adapter/back cover. To check for phone or other device compatibility, see my.gmc.com/learn or consult your carrier.



GET THERE WITH GOOGLE BUILT-IN

Available Google built-in¹ compatibility is now fully integrated into the GMC Infotainment System.² With Google built-in, you will receive a helpful, personalized and seamless way to enhance your in-vehicle experience. With Google Assistant, Google Maps and Google Play, you get access to hands-free help, live traffic updates, some of your favorite apps and more.

¹Google built-in services are subject to limitations, and availability may vary by vehicle, infotainment system and location. Select service plan required. Certain Google actions and functionality may require account linking. User terms and privacy statements apply. Google, Google Play and Google Maps are trademarks of Google LLC. ²Functionality varies by model. Full functionality requires compatible Bluetooth® and smartphone, and USB connectivity for some devices.



HELP WHEN YOU NEED IT

With available OnStar® Safety and Security, you'll have added peace of mind knowing an Emergency-Certified Advisor¹ is ready to help. Whether it's a crash, a vehicle theft or an emergency situation, help is available 24/7.

The Safety & Security Plan² includes the OnStar Guardian™ App,³ which lets you bring the key OnStar safety services you depend on into any vehicle. Help in a crash, assistance with a flat tire and more are available through your smartphone. Best of all, you can share OnStar Guardian with up to seven of your loved ones at no additional cost.



¹OnStar Emergency Advisors are certified by the International Academies of Emergency Dispatch. ✗
²OnStar plan, working electrical system, cell reception and GPS signal required. OnStar links to emergency services. Not all vehicles may transmit all crash data. See onstar.com for details and limitations. ³U.S. and Canada only. Available on select Apple® and Android devices. Mobile Crash Response services are intended for use in select vehicles only and can connect automatically on Android devices only. Service coverage varies with conditions and location. Service availability, features and functionality vary by device and software version. OnStar Guardian service plan (stand-alone plan, add-on plan or plan that includes the service), cell reception, GPS signal and device data connection required. Terms apply. Device permissions are required for app to operate properly. OnStar links to emergency services. Device and app may not transmit all crash data. See onstar.com for details and limitations. Pricing and availability subject to change. You may cancel at any time by calling 1-888-4ONSTAR (1-888-466-7827).

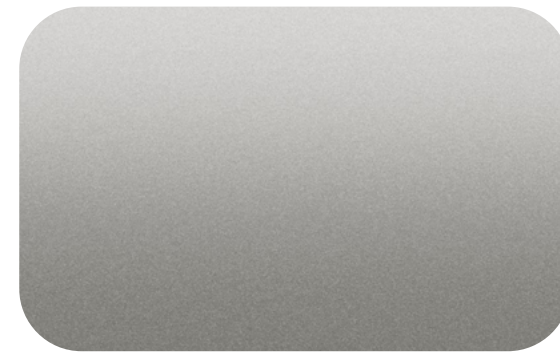
FIND YOUR TRUE COLORS



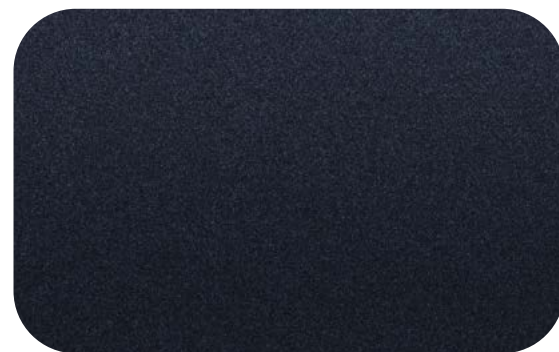
SUMMIT
WHITE



ONYX
BLACK¹



PEARL BEIGE
METALLIC^{1,2}



MIDNIGHT BLUE
METALLIC¹



SATIN STEEL
METALLIC¹



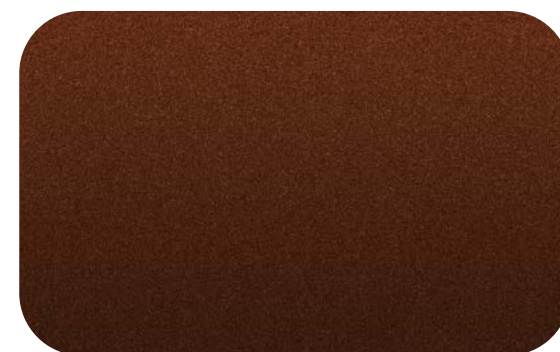
CAYENNE RED
TINTCOAT¹



HUNTER
METALLIC^{1,3}



WHITE FROST
TRICOAT^{1,4}



REDWOOD
METALLIC¹

- ¹Extra-cost color.
- ²Not available on AT4.
- ³Only available on Denali.
- ⁴Not available on SLE.



Denali shown in Hunter Metallic.

See your GMC dealer or gmc.com for more exterior color details.

Due to current supply-chain shortages, certain features shown have limited or late availability, or are no longer available. See the window label or a dealer regarding the features on an individual vehicle.

ACCESSORY FIRST-ROW PREMIUM ALL-WEATHER FLOOR LINER



ACCESSORY CHROME MIRROR COVERS, 22" MULTI-SPOKE CHROME WHEELS,¹ ILLUMINATED MIRROR GMC EMBLEM AND FRONT SPLASH GUARD



¹Late-availability accessory wheels shown. Use only GM-approved tire and wheel combinations. See gmc.com/accessories for important tire and wheel information, or see your dealer.



ACCESSORY ROOF RACK CROSSRAILS AND THULE[®] ROOF-MOUNTED CARGO BOX



ACCESSORY INTEGRATED CARGO LINER



Due to current supply-chain shortages, certain features shown have limited or late availability, or are no longer available. See the window label or a dealer regarding the features on an individual vehicle.