

zoom-zoom

zoom-zoom

2003 B-SERIES TRUCK



Get more detailed information on your Mazda B-Series. Check out our website at www.mazda.ca for specifications and features, option packages, pricing, financing and to find a dealer near you.



Mazda Canada Inc., Suite 400, 305 Milner Avenue, Scarborough, Ontario M1B 3V4
Printed in Canada. Part No. 9999-92-B203-EN



mazda
www.mazda.ca



mazda
www.mazda.ca



Nothing beats having
the right tool for the job.

We're defining "job" pretty loosely here. Hit the country roads, tow a boat, load up supplies for a barbecue – a Mazda B-Series Truck makes it that much easier. Rugged, powerful and well equipped. They come in a full range of models, 4x2 or 4x4, with a choice of engines, transmissions, seating configurations and standard equipment. And with a sporty appearance these trucks not only perform but look great doing it. Whatever your activity, there's a Mazda B-Series to match.



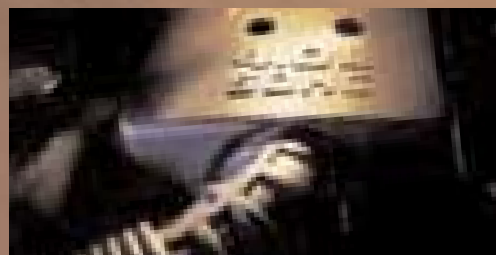


Haul of fame credentials.

What can you take and where can you take it? If those are the first questions you ask about a truck, you'll like our answers. Lots. And nearly anywhere.

Thanks to a trio of high torque, powerful engines. B4000 models have a 4.0-litre V6 with 207 horsepower and 238 lb-ft of torque. B3000 models have a 3.0-litre V6 with 154-hp and 180 lb-ft of torque, and B2300 models have a 2.3-litre 4-cylinder with 143-hp and 154 lb-ft of torque. A 5-speed manual transmission is standard, yet

a 5-speed electronically controlled automatic is available with any engine choice. With a Mazda B-Series Truck you will want to move mountains.



Play dirty.

So the best camping spot in the province is between two hills and a muddy creek 10 km from the main road. It rained three days this week. But your Mazda B4000 4x4 Truck is made for those conditions. It has nearly 8-inches of ground clearance. You can shift into or out of 4-wheel-drive on the fly (up to 72 km/h), so you never need to stop to lock the hubs, and there's a low range for the really rough terrain. Underbody skid plates protect the fuel tank and transfer case. So the trip's too rough for cars? Too slippery for 2-wheel-drive trucks? Too bad – but not for you. Who said life was fair?



Far left: Shift from 2WD to 4WD high range or 4WD low range with just a quick turn of the dash-mounted control.


Left: Generous ground clearance lets you go places even 4WD cars fear to tread. Respect the wilderness. There's still plenty of fun to be had.

Get in touch with your softer, gentler side.




Refined truck. A contradiction in terms? Not with a Mazda B-Series Truck. Here, you'll find a high level of comfort and convenience. The 60/40 split-bench seat is well-shaped and supportive (4x2 models). The cab is roomy and you sit up high for

a great view over traffic. Controls are intuitive to use, thanks to the clear and logical dashboard layout. There's a long list of standard equipment that makes the cab a very friendly place. Air conditioning (CFC-free, of course) is standard in most models. Cup holders, a great sound system and an extra 12-Volt outlet on the dash are standard in all. Sure, Mazda B-Series Trucks are rugged and tough on the outside. Inside, they're kind and gentle. But nobody says you have to let on.



Right: AM/FM/CD stereo system with four speakers and a digital clock is standard. Great sound with plenty of volume available.



Far right: Cab Plus models have two folding jump seats for extra passenger capacity.

Here's what **you can do**
with your **sense of style.**

Just about anything you want. Drive it to the hottest nightspot in town. Take it fishing. Personalize it from our long list of custom accessories.





All you need to pull off those big weekend plans.

With the 207-hp Mazda B4000 4x2 Truck and optional 5-speed automatic transmission, you can tow a trailer weighing as much as 2,640 kg. Jet boats, dirt bikes, snowmobiles, ATVs, race cars – they're all great fun. But you have to get them somewhere. A powerful Mazda B-Series Truck has the kind of pull you need.

AXLE RATIO AND LOAD RATING

ENGINE/TRANSMISSION	AXLE TYPE	AXLE RATIO	MAXIMUM TRAILER WEIGHT†				MAXIMUM GCWR*	
			Regular Cab		Cab Plus		kg	lbs
B2300/MT (4x2)	Regular	3.73	744	1,640			2,177	4,800
B2300/AT (4x2)	Regular	4.10	1,016	2,240			2,495	5,500
B3000/MT (4x2)	LS	3.73	1,197	2,640	1,107	2,440	2,722	6,000
B3000/AT (4x2)	LS	3.73	1,860	4,100	1,769	3,900	3,402	7,500
Dual Sport 3.0L MT (4X2)	LS	4.10	1,161	2,560			2,722	6,000
Dual Sport 3.0L AT (4x2)	LS	4.10	1,823	4,020			3,402	7,500
Dual Sport 3.0L MT (4x2)	LS	4.10			1,070	2,360	2,722	6,000
Dual Sport 3.0L AT (4x2)	LS	4.10			1,733	3,820	3,402	7,500
B4000/MT (4x2)	LS	3.55			1,524	3,360	3,175	7,000
B4000/AT (4x2)	LS	3.55			2,640	5,820	4,309	9,500
Dual Sport 4.0L MT (4x2)	LS	3.55			1,488	3,280	3,175	7,000
Dual Sport 4.0L AT (4x2)	LS	3.55			2,604	5,740	4,309	9,500
B4000/MT (4x4)	LS	4.10			1,361	3,000	3,175	7,000
B4000/AT (4x4)	LS	4.10			2,486	5,480	4,309	9,500

LS = Limited Slip Axle

*The Gross Combined Weight Rating (GCWR) is the maximum allowable combined weight of vehicle, trailer, passengers and cargo.

†Trailer weights shown are maximums and must be reduced by the weight of any passengers, cargo, hitch, or optional equipment in the towing vehicle. The following equipment may also be required: load-carrying hitch for trailers over 2,000 lbs. Towing a trailer will have an effect on the vehicle's handling, braking and durability, performance, and driving economy. For specific information on recommended or required equipment, see your Mazda Dealer.

ENGINE/TRANSMISSION	MAXIMUM PAYLOAD RATINGS*		MAXIMUM GROSS AXLE WEIGHT RATING (GAWR)				GROSS VEHICLE WEIGHT RATING (GVWR)	
	kg	lbs	Front		Rear		kg	lbs
B2300/MT (4x2) Regular Cab	572	1,260	1,043	2,300	1,157	2,550	1,969	4,360
B2300/AT (4x2) Regular Cab	572	1,260	1,043	2,300	1,157	2,550	1,969	4,360
B3000/MT (4x2) Regular Cab	744	1,640	1,043	2,300	1,247	2,750	2,123	4,680
B3000/AT (4x2) Regular Cab	744	1,640	1,043	2,300	1,247	2,750	2,123	4,680
Dual Sport 3.0L MT (4X2) Regular Cab	572	1,260	1,139	2,510	1,179	2,600	2,132	4,700
Dual Sport 3.0L AT (4X2) Regular Cab	572	1,260	1,139	2,510	1,179	2,600	2,132	4,700
B3000/MT (4x2) C/P	753	1,660	1,179	2,600	1,247	2,750	2,286	5,040
B3000/AT (4x2) C/P	753	1,660	1,179	2,600	1,247	2,750	2,286	5,040
Dual Sport 3.0L MT (4x2) C/P	572	1,260	1,229	2,710	1,179	2,600	2,241	4,940
Dual Sport 3.0L AT (4x2) C/P	572	1,260	1,229	2,710	1,179	2,600	2,241	4,940
B4000/MT (4x2) C/P	753	1,660	1,179	2,600	1,247	2,750	2,286	5,040
B4000/AT (4x2) C/P	753	1,660	1,179	2,600	1,247	2,750	2,286	5,040
Dual Sport 4.0L MT (4x2) C/P	572	1,260	1,229	2,710	1,179	2,600	2,241	4,940
Dual Sport 4.0L AT (4x2) C/P	572	1,260	1,229	2,710	1,179	2,600	2,241	4,940
B4000/MT (4x4) C/P	572	1,260	1,293	2,850	1,179	2,600	2,313	5,100
B4000/AT (4x4) C/P	572	1,260	1,293	2,850	1,179	2,600	2,313	5,100

*Payload is the maximum allowable weight of people, cargo and body equipment and is reduced by the weight of optional equipment.

2003 MAZDA B-SERIES TRUCK ACCESSORIES



Pictured below from left to right: side-step tube, bedliner and bed extender.



- Front mask • Hood deflector • All-weather floor mats – front • Electrochromatic mirror w/ compass • Electrochromatic mirror w/ compass & temperature • Fog lights
- Wheel locks (set of 4) • Tailgate lock
- Bedliner • Bed extender • Soft tonneau cover • Trailer hitch (class III) • Retractable tie-downs • Bed rails • Side-step tubes
- Foldable storage box • Spare tire lock

For further information, please refer to the Mazda Accessories Brochure. Mazda notes that all Genuine Mazda Accessories, if installed by your Mazda Dealer prior to or at an initial vehicle retail delivery, carry the same new-vehicle warranty as the Mazda B-Series Truck.

COLOUR COMBINATIONS

EXTERIOR

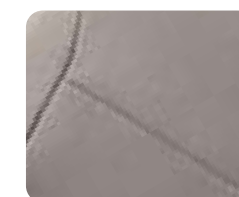
Regular Models

Mystic Black	Medium Graphite
Classic White	Medium Graphite
Performance Red	Medium Graphite
Deep Galaxy Blue	Medium Graphite
Platinum Frost Metallic	Medium Graphite
Chestnut Mica	Medium Prairie Tan
Light Tundra	Medium Prairie Tan
Sandstorm	Medium Prairie Tan

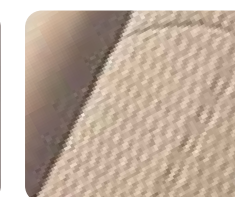
Dual Sport Models**

Monochromatic Mystic Black	Medium Graphite
Monochromatic Classic White	Medium Graphite
Monochromatic Performance Red	Medium Graphite
Monochromatic Platinum Frost	Medium Graphite
Monochromatic Chestnut Mica	Medium Prairie Tan

**Dual Sport models feature body-colour bumpers, door handles, fender flares, front grille surround & lower front fascia.



Medium Graphite



Medium Prairie Tan



Mystic Black



Classic White



Performance Red



Deep Galaxy Blue



Platinum Frost Metallic



Chestnut Mica



Light Tundra



Sandstorm

2003 B-SERIES TRUCK SPECIFICATIONS

ENGINE	B2300	B3000	B4000
Type	2.3L DOHC I4	3.0L OHV V6	4.0L SOHC V6
Displacement	2,261 cc	2,957 cc	4,025 cc
Bore and stroke	87.5 x 94mm	88.9 x 79.8mm	100.3 x 84.3mm
Compression ratio	9.7:1	9.0:1	9.0:1
Horsepower SAE net	143 @ 5,250 rpm	154 @ 5,200 rpm	207 @ 5,250 rpm
Torque, SAE net lb. ft.	154 @ 3,750 rpm	180 @ 3,900 rpm	238 @ 3,000 rpm
Fuel system	Sequential Electronic multi-port Fuel Injection (EFI)	Sequential Electronic multi-port Fuel Injection (EFI)	Sequential Electronic multi-port Fuel Injection (EFI)
Valve-train	4-valves per cylinder	2-valves per cylinder	2-valves per cylinder
Engine block	Aluminum alloy	Cast iron	Cast iron
Recommended fuel	Regular (unleaded)	Regular (unleaded)	Regular (unleaded)

DRIVETRAIN

Type	Front engine/rear-wheel drive			
Transmission	5-speed manual with overdrive and hydraulically actuated non-asbestos self-adjusting clutch			
	5-speed automatic with overdrive and lock-up torque converter			
	Manual (I4)		Automatic (V6)	
	B2300	B3000	B4000	B2300/B3000/B4000
Gear ratios: 1st	3.72	3.72	3.40	2.47
2nd	2.20	2.20	2.05	1.85
3rd	1.50	1.50	1.31	1.47
4th	1.00	1.00	1.00	1.00
5th	0.79	0.79	0.79	0.75
Reverse	3.40	3.40	3.40	2.10
Transfer case	2-speed, planetary gears. Gear ratios: 1.00:1 (high range); 2.48:1 (low range). Rotary switch electric shift with live axle system.			

ELECTRICAL SYSTEM

Type	Maintenance-free with battery saver
Battery	I4: GR96R (12V-52AH), V6: GR40R (12V-60AH)
Alternator	95 amp
Starter	1,425W
Ignition system	Electronic (EEC-V) Distributorless. Solid state w/ on-board diagnostic system
Fan clutch	Viscous type

CHASSIS

Frame	Ladder-type, single channel, w/ 7-cross members (8-cross members on C/P models)
4x2 Front suspension	Unequal length double A arm front suspension used in conjunction with power-assisted rack-and-pinion steering. Computer-selected coil springs, gas-pressurized shock absorbers and stabilizer bar.
4x2 Rear suspension	Semi-floating live axle with two stage multi-leaf springs, gas-pressurized shock absorbers.
4x4 Front suspension	Torsion bar, computer selected, with unequal length double A arm suspension used in conjunction with power-assisted rack-and-pinion steering. Stabilizer bar.
4x4 Rear suspension	Semi-floating live axle with two stage multi-leaf springs and heavy duty gas-pressurized shock absorbers.
Steering	Power-assisted, rack-and-pinion type
Steering ratio	23.75:1
Min. turning circle	4x2: 11.5m Regular Cab; 12.98m Cab Plus 4x4: 13.07m Cab Plus
Brakes	Power-assisted, with dual hydraulic circuits and 4-wheel Anti-lock Brake System (ABS) 4x2: 261mm dual piston, floating caliper ventilated front discs; 229mm rear drum; 4x4: 287mm dual piston, floating caliper ventilated front discs; 254mm rear drums
Parking brake	Foot-operated, soft release

WHEELS AND TIRES

Wheels	15" 7-spoke silver steel wheels (SX Regular & Cab Plus) 15" Tear-drop alloy wheels (Dual Sport models) 15" 5-spoke alloy wheels (4x2 SE and SE Plus Package) 16" 3-spoke alloy wheels (4x4 SE)
Tires	225/70R15 all-season BSW tires (4x2 SX Reg. Cab, Cab Plus, & 4X2 SE/SE Plus Package) 235/75R15 all-terrain BSW tires (Dual Sport models) 245/75R16 all-terrain OWL tires (4x4 SE)

EXTERNAL DIMENSIONS (mm)

		REGULAR CAB	CAB PLUS
Wheelbase	4x2	2,834	3,193
	4x4	–	3,198
Track (fr/r)	4x2	1,488/1,455	1,488/1,455
	4x4	–	1,488/1,455
Overall length	4x2(DS)	4,762	5,123
	4x4	–	5,153
Overall width	4x2	1,763	1,763
	4x4	–	1,786
Overall height	4x2	1,648	1,646
	4x2(DS)	1,717	1,715
	4x4	–	1,715
Ground clearance	4x2	170	170
	4x2(DS)	185	185
	4x4	–	201

INTERNAL DIMENSIONS (mm)

		REGULAR CAB	CAB PLUS
Shoulder room: front	4x2/4x4	1,384/–	1,366/1,366
	rear	–	388/388
Headroom: fr/r		995/–	995/904
Legroom: fr/r		1,077/–	1,072/1,024
Hiproom: fr/r		1,388/–	1,388/503
Bed, inside length		1,824	1,824
Bed, inside width (max.)		1,320	1,320
Bed, inside width (min)		1,026	1,026
Bed, inside depth		419	419

BASE CURB WEIGHTS (kgs.)

	4X2	4X4
Regular Cab	1,374	–
Dual Sport – Regular Cab	1,484	–
Cab Plus	1,525	1,706
Dual Sport – Cab Plus	1,581	–

TRANSPORT CANADA FUEL ECONOMY RATINGS

	Model	L (100 km)	
		City	Hwy.
4x2	B2300 MT	9.8	7.7
	B2300 AT	11.5	8.7
	B3000 MT	12.7	9.8
	B3000 AT	13.8	9.9
4x4	B4000 MT	13.5	10.0
	B4000 AT	14.2	10.2
	B4000 MT	15.2	11.5
	B4000 AT	16.2	11.7

FUEL TANK CAPACITIES

Regular Cab	62.4L
Cab Plus	73.8L

2003 B-SERIES TRUCK FEATURES

ENGINEERING FEATURES	4X2						4X4
	REGULAR CAB	3.0L	3.0L	3.0L	CAB PLUS		
	SX	SX	DS	SX	DS	SE	SE
B2300 2.3L I4	S	–	–	–	–	–	–
B3000 3.0L OHV V6	–	S	S	S	S	S	–
B4000 4.0L SOHC V6	–	–	–	–	O	O	S
5-speed manual transmission w/ overdrive	S	S	S	S	S	S	S
5-speed electronic automatic transmission w/ overdrive	O	O	O	–	–	–	O
5-speed automatic transmission w/ 3.0L Flex Fuel Engine	–	–	–	O	O	O	–
Power front disc/rear drum brakes	S	S	S	S	S	S	S
4-wheel Anti-lock Brake System (ABS)	S	S	S	S	S	S	S
Front stabilizer bar	S	S	S	S	S	S	S
Electric shift transfer case with live axle system	–	–	–	–	–	–	S
Rotary dial 'Shift-on-the-fly' control	–	–	–	–	–	–	S
Limited slip axle	–	S	S	S	S	S	S
Engine block heater and battery warmer	S	S	S	S	S	S	S
Skid plates; fuel tank and transfer case	–	–	–	–	–	–	S
Battery saver	S	S	S	S	S	S	S
EXTERIOR FEATURES							
15" 7-spoke silver steel wheels; 225/70R15 A/S BSW tires	S	S	–	S	–	–	–
15" Tear-drop alloy wheels; 235/75R15 A/T BSW tires	–	–	S	–	S	–	–
15" 5-spoke alloy wheels; 225/70R15 A/S BSW tires	–	–	–	–	–	S	–
16" 3-spoke alloy wheels; 245/75R16 A/T OWL tires	–	–	–	–	–	–	S
Body-colour door handles, front & rear bumpers	–	–	S	–	S	–	–
Body-colour front grille surround and lower front fascia	–	–	S	–	S	–	–
Chrome grille and chrome trim around side window	–	–	–	–	–	S	S
Chrome front bumper	–	–	–	–	–	S	S
Bright rear bumper	–	–	–	–	–	S	S
Dual black power sailmount exterior foldaway mirrors	–	–	–	–	–	S	S
Front (2) tow hooks	–	–	–	–	–	–	S
Sliding rear window	S	S	S	S	S	S	S
Fog lights	–	–	S	–	S	P	S
Wheel lip mouldings with integrated mud flaps	–	–	S	–	S	–	S
Trailer tow wire harness – 4 pin	S	S	S	S	S	S	S
Removable tailgate	S	S	S	S	S	S	S
INTERIOR FEATURES: COMFORT AND CONVENIENCE							
Leather-wrapped steering wheel	–	–	–	–	–	S	S
Cruise control with steering wheel mounted controls	–	–	–	–	–	S	S
Tilt steering	–	–	–	–	–	S	S
Intermittent wipers	S	S	S	S	S	S	S
Power door locks	–	–	–	–	–	S	S
Power windows	–	–	–	–	–	S	S

COMFORT AND CONVENIENCE (cont'd)	4X2						4X4
	REGULAR CAB	3.0L	3.0L	3.0L	CAB PLUS		
	SX	SX	DS	SX	DS	SE	SE
Keyless entry (2 transmitters included)	–	–	–	–	–	S	S
12-volt auxiliary power point	S	S	S	S	S	S	S
Sunvisors w/ passenger-side mirror	–	–	–	–	–	S	S
INTERIOR FEATURES: SEATING AND TRIM							
60/40 cloth split bench seat with armrest/storage/1 cup holder/coin storage	S	S	S	S	S	S	–
Sport bucket seats with armrest/storage/2 cup holders/coin storage	–	–	–	–	–	P	S
Side facing vinyl rear jump seats	–	–	–	S	S	S	S
Floor consolelet with 2 cup holders	S	S	S	S	S	S	S
Rear cup holders	–	–	–	S	S	S	S
Door map pockets	–	–	–	S	S	S	S
INSTRUMENTATION							
Tachometer	S	S	S	S	S	S	S
AUDIO SYSTEMS							
AM/FM/CD player stereo w/ clock, 4 speakers and antenna	S	S	S	S	S	S	–
Premium AM/FM 6-disc CD changer w/ clock, 4 speakers and antenna	–	–	–	–	–	P	S
SAFETY FEATURES							
Driver and passenger air bags (SRS)	S	S	S	S	S	S	S
Ignition-key-actuated switch for deactivating passenger air bag	S	S	S	S	S	S	S
Collapsible steering column	S	S	S	S	S	S	S
Front safety belts with shoulder belt height adjustment	S	S	S	S	S	S	S
Full-size temporary spare tire	S	S	S	S	S	S	S
Crank up/down spare tire carrier	S	S	S	S	S	S	S
Securilock engine immobilizer theft deterrent system	S	S	S	S	S	S	S
Spare fuses	S	S	S	S	S	S	S
OPTIONAL FEATURES							
4.0L SOHC V6	–	–	–	–	O	O	S
CFC-free air conditioning	O	A/O	S	A/O	S	S	S

S = Standard O = Optional A = Accessory – = Not available P = Plus Package

Dual Sport Package: 4x4 chassis, 235/75R15 tires, 15" Tear-drop alloy wheels, body-colour fender flares w/ integrated mud flaps, body-colour door handles and front & rear bumpers, body-colour front grille surround and lower front fascia, fog lights and air conditioning.

SE Plus Package: Sport bucket seat with armrest/storage/2 cup holders, fog lights and premium AM/FM 6-disc CD changer w/ 4 speakers. Requires 4.0L engine and only available on SE models. Standard on all 4x4 models.

MAZDA WARRANTY The basic warranty on Mazda B-Series Truck covers all parts found to be factory defective for 3 years or 60,000 km whichever comes first. Additional warranties cover powertrain components for a period of 3 years or 80,000 km whichever comes first, body sheet metal perforation for 5 years and unlimited mileage and specific emission control components for up to 8 years or 128,000 km. Exclusions from coverage are limited to maintenance items or adjustments (repairs not requiring parts replacement) on vehicles over 12 months old and repairs due to normal wear and tear. Ask your Mazda Dealer for additional information.

ROADSIDE ASSISTANCE PROGRAM As part of our commitment to your total satisfaction, 2003 Mazda B-Series Truck owners are automatically enrolled in our Roadside Assistance Program. Roadside Assistance protects your Mazda B-Series Truck for the duration of the 3-year basic limited warranty. Should you require assistance during this period, our service will help to get your vehicle back on the road and minimize any inconvenience. For complete details on this program, see your Mazda Dealer.

MAZDA ADDED PROTECTION For peace of mind motoring, we've created the Mazda Added Protection Plan (MAP). MAP complements your Mazda Limited Warranty for up to 7 years or 160,000 km, and protects you from unexpected repair expenses and the rising cost of repairs. All MAP plans include Personal Budget and Repair Inflation Protection. In addition, all MAP plans include Premium Roadside Assistance, which extends the roadside assistance coverage offered during the new vehicle limited warranty period throughout the MAP term. The Premium Roadside Assistance offers Towing, Battery Boost, Out-of-Fuel Coverage, Tire Service, Lockout Service, Emergency Travel Expense Reimbursement and Travel Planning. Should you ever decide to sell your Mazda vehicle, MAP is transferable to future owners and will enhance the resale value of your vehicle. The Mazda Added Protection Plan is fully backed and administered by Mazda Canada Inc. For more information, please contact your Mazda Dealer.

Product changes and options availability: Following publication of this brochure, certain changes in standard equipment, options, prices and the like, or product delays may have occurred which would not be included in these pages. Your Mazda Dealer is your best source for up-to-date information. Mazda reserves the right to change product specifications at any time without incurring obligations. Options and accessories shown or described in this brochure are available at extra cost and may be offered only in combination with other options or subject to additional ordering requirements or limitations. E. & O. E.