

2003

ACURA
— EL —



ACURA

www.acura.ca



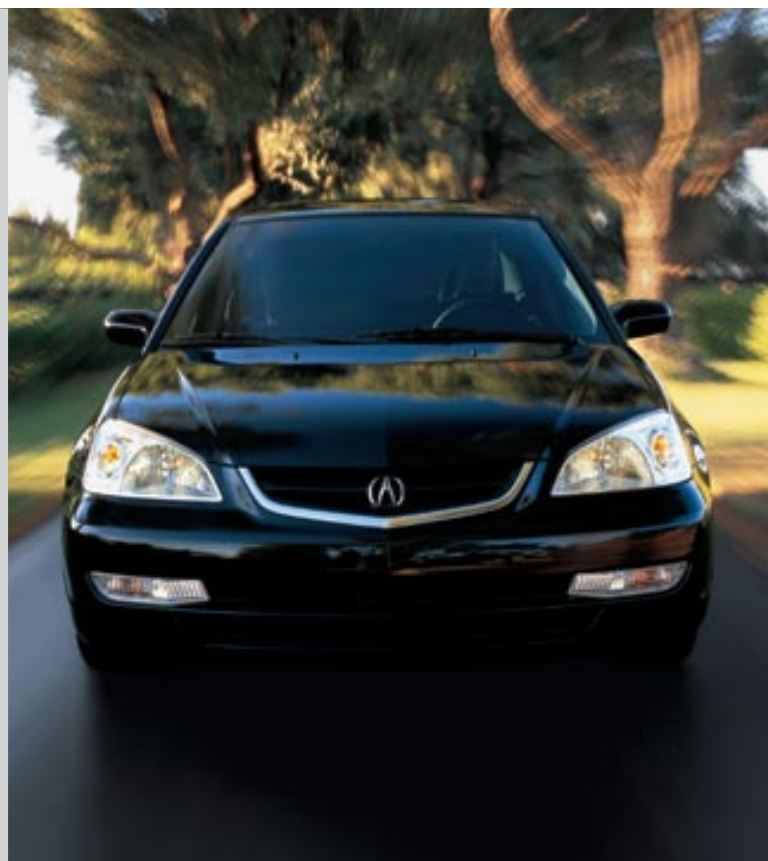


The Acura philosophy has always been about engineering; applying precision and ingenuity to mechanical challenges, and in the process, enriching the driving experience. This ongoing mission pushes us to constantly redefine our standards. The result is a line of performance vehicles that satisfies even the most qualified driver.



ACCELERATED THINKING

Part of our learning comes from the track where elite racers test new materials and designs under the most severe conditions, resulting in new technologies for you. Whether it's a powerful engine that responds in a heartbeat, a suspension capable of advanced manoeuvres, or a cockpit that yields expert control, you'll discover performance that ignites your passion and challenges your ability. Experience it yourself in the 2003 Acura EL. It's time to test drive our thinking.



) performance (



PURE STIMULATION

It is a spirited automobile. One with the power and precision to connect you flawlessly with the road. Yet it is no less accomplished in the art of style and sophistication. The Acura EL. A luxurious, European-inspired sports sedan that captures the essence of driving perfection. From the impressive linearity of its steering to its precise, 4-wheel independent suspension, the EL will reward you with superior road feel and

unforgettable control. Its responsive VTEC engine serves up enough power to awaken the senses, and it's to be enjoyed from an openly driver-oriented cockpit. Whether your choice is the elegant Touring model or the richly-appointed Premium, you'll be treated to an astonishing degree of dynamic performance and refinement. Then again, it's exactly what you'd expect from Acura.

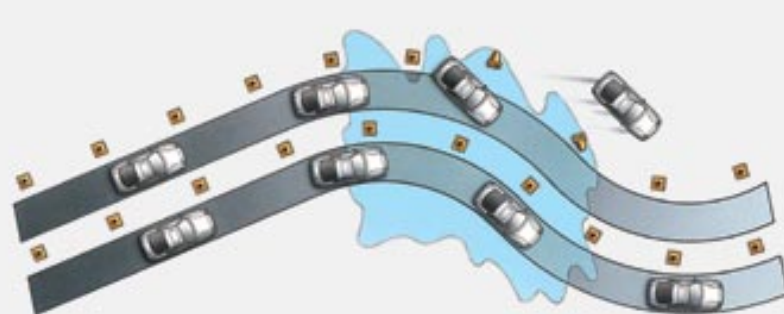
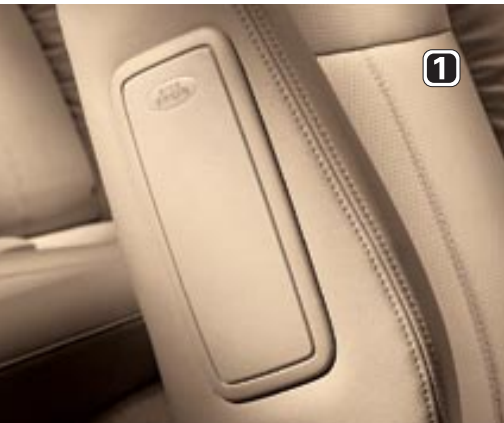




INTENTIONALLY DESIGNED FOR THE UNEXPECTED

Our commitment to engineering excellence includes our dedication to developing the most sophisticated safety features possible. It all begins with the rigid safety cage beneath the sleek EL exterior. Strong steel reinforcements help protect the interior, while each door has been reinforced with a steel side-impact beam to offer protection from lateral collisions. Inside, there are built-in child seat tethers in the rear, 3-point

seat belts at all seating positions, dual-stage, dual-threshold front air bags, and driver and front passenger side air bags to help protect occupants. A remote keyless entry system with panic feature has also been added for your peace of mind. Combined, these features give you the comfort of knowing that safety for you and your passengers is another one of Acura's top priorities.



① Both front seats offer the protection of side-impact air bags mounted in the outer edge of the seatbacks. If the front seat passenger is a child or small-statured adult, or if the passenger is in the air bag's deployment path, sensors prevent the side air bag from deploying. The system is reactivated when the proper seating position is restored. ② Advanced, computer-aided design engineering tools were used to develop the sturdy EL chassis so it acts as a rigid barrier that resists impact forces. Helping achieve this are front and rear crumple zones that deform in a controlled manner to absorb impact forces before they can reach the passenger cabin. ③ The Anti-Lock Braking System (ABS) on the EL pulses the brakes to prevent wheel lockup. This helps the driver retain steering control when braking hard, especially on slippery surfaces.





) interior (

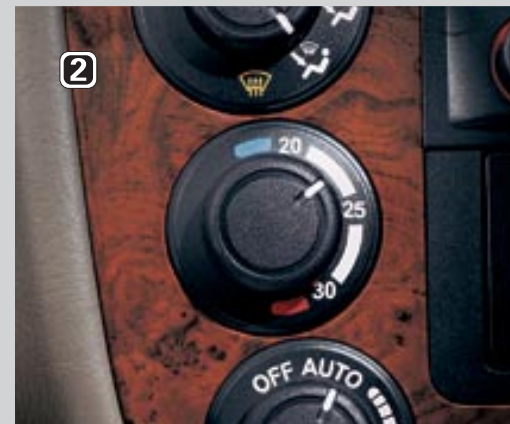


YOUR SEAT OF COMMAND

Step inside the Acura EL and start your engine. Whether you're in the Touring model with its cloth upholstery, or the Premium with the added sportiness of perforated leather trim, you'll feel energized in the height-adjustable driver's seat. Sculptured front seats with deep side bolsters, and a 4-spoke leather-wrapped steering wheel invite you to achieve the perfect cornering line, while superb outward visibility allows you to expertly anticipate each driving situation. The cabin has also been furnished with stylish chrome accents and wood-print trim, making the ride look as good as it feels.



① On the Premium model, a power-operated moonroof with dark tinted privacy glass, tilt feature, and sliding shade provides added luxury and comfort at the touch of a button. ② The Automatic Climate Control System featured in the EL Premium maintains your ideal driving temperature. It also incorporates a Micron Air Filtration System which helps reduce bacteria, pollen, and smoke particles. ③ To complement the high-revving VTEC engine and further engage the driver, the EL comes with a slick-shifting standard 5-speed transmission. It's a light, compact design that uses narrow high-capacity bearings and low-friction lubricant for improved shift quality and crispness. ④ If you prefer the convenience of an automatic transmission, the EL also offers an optional 4-speed automatic featuring Grade Logic Control that reduces gear hunting on steep inclines and descents.





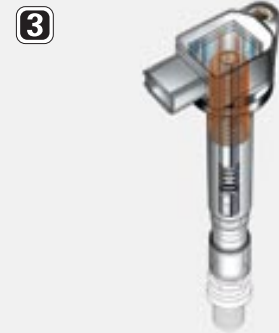
DRIVE ON THE
LEADING EDGE

To ensure an invigorating and rewarding driving experience, the Acura EL is superbly equipped with engineering innovations. It begins with the 1.7 litre, 16-valve, all-aluminum engine at its heart. Featuring our race-derived VTEC (Variable Valve Timing and Lift Electronic Control) system, this powerplant serves up quick response and riveting power.

The efficient EL engine also surpasses the requirements of the U.S. Federal National Low Emissions Vehicle (NLEV) program. So you won't be the only one who benefits from the ride. Whether straight, steep or winding, our European-inspired sports sedan gives you masterful command of any road. This handling prowess comes courtesy of a 4-wheel independent suspension that yields wonderfully crisp turn-in, thanks to refinements that reduce vibration and improve steering feel. To further enhance handling, there are front and rear stabilizer bars, bringing even more enjoyment to your spirited ride. Finally, the EL uses disc brakes at all four wheels which provide impressive braking power and excellent resistance to fade. An Anti-Lock Braking System (ABS) is also standard. Because 60 to 0 is just as important as 0 to 60.



❶ The VTEC system varies intake valve timing and lift so that it closely matches the engine's changing air/fuel needs, improving power while also enhancing fuel economy and lowering emissions. Adding to engine efficiency is its 4-valve-per-cylinder design which optimizes fuel and air mixture in the combustion chambers. ❷ The engine's high-rigidity cylinder block design and strong, lightweight pistons further improve power and performance. ❸ Equipped with an electronically controlled direct ignition system, the EL engine eliminates the need for high-tension spark plug wires. This ensures the hottest, most precise spark possible and consequently, lowers emissions. ❹ The 4-wheel independent suspension coupled with large diameter stabilizer bars provide sporty, stable handling while reducing vehicle roll. ❺ Progressive valve shock absorbers tuned in a European style remain firm against body lean in corners, so that you experience precision handling with a stiff, exacting ride.



specifications (

POWERTRAIN	
Drivetrain	Transverse front engine / front-wheel drive
Engine Type	1.7-litre, SOHC with Variable Valve Timing and Lift Electronic Control (VTEC)
Horsepower, SAE net	127 hp @ 6300 rpm
Torque, SAE net	114 lbs.-ft. @ 4800 rpm
Bore & Stroke	75 mm x 94.4 mm
Displacement	1668 cc
Compression Ratio	9.9:1
Fuel System	Multi-point Programmed Fuel Injection (PGM-FI)
Valvetrain	4-valves-per-cylinder with VTEC
Engine Block/Cylinder Head	Aluminum alloy
Emissions Control	Vehicle surpasses the requirements of the U.S. Federal National Low Emissions Vehicle (NLEV) program
Ignition System	Electronic direct ignition
Transmission	5-speed manual (standard) 4-speed automatic with Grade Logic Control System (optional)

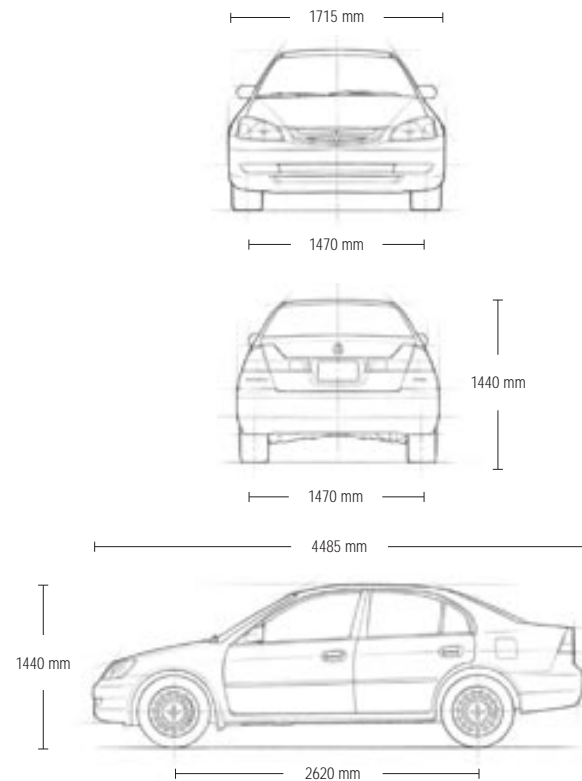
SUSPENSION/CHASSIS	
Front Suspension	Toe Control-Link Independent Strut with coil springs
Rear Suspension	Reactive-Link Double-Wishbone with coil springs
Shock Absorbers	Gas pressurized
Stabilizer Bars	Front 15.9 mm diameter Rear 12 mm diameter
Steering Type	Variable power-assist rack-and-pinion
Steering Ratio	14.7:1
Turning Radius	5.6 m
Wheels	Cast Aluminum Alloy, 15" x 6.0" JJ
Tires	All Season 185/65 R15
Braking System	Anti-Lock Braking System (ABS)
	Front Power-assisted ventilated disc Rear Power-assisted solid disc

CAPACITIES	
Engine Oil (litres)	4.2
Fuel Tank (litres)	50
Cooling System (MT/AT) (litres)	5.0/4.9
Passenger Volume (litres)	2495
Cargo Volume (litres)	365

FUEL ECONOMY		(2003 Data Shown)	
Manual Transmission (L/100 km)	City: 7.8 Highway: 6.1		
Automatic Transmission (L/100 km)	City: 8.2, Highway: 6.0		
Recommended Fuel	Regular unleaded		

INTERIOR DIMENSIONS		
Front	Head Room	(Touring) 1010 mm (Premium) 964 mm
	Leg Room	1072 mm
	Hip Room	1300 mm
	Shoulder Room	1335 mm
Rear	Head Room	(Touring) 964 mm (Premium) 923 mm
	Leg Room	914 mm
	Hip Room	1266 mm
	Shoulder Room	1321 mm

EXTERIOR DIMENSIONS		
Wheelbase		2620 mm
Track, front		1470 mm
Track, rear		1470 mm
Length		4485 mm
Width		1715 mm
Height		1440 mm
Curb Weight	Manual Transmission	(Touring) 1182kg (Premium) 1199kg
	Automatic Transmission	(Touring) 1205kg (Premium) 1222kg



SAFETY FEATURES
Driver and front passenger dual-stage, dual-threshold Air Bag System (SRS)
Driver and front passenger Side Air Bag System (SRS) with front passenger Occupant Position Detection System (OPDS)
Anti-Lock Braking System (ABS) with Electronic Brake Distribution (EBD)
Remote keyless entry system with panic feature and trunk release
ECU immobilizer system
Security system
3-point (ALR) seat belts (Front Rt., Rear)*
3-point (ELR) seat belts**
Front adjustable seat belt anchors
Front seat belt dual pretensioners
Front occupant knee bolster
Child-proof rear door locks
Rear seat child tether anchors
LATCH Child Safety Seat Anchor System
Inner trunk emergency handle
Rear window defroster

* (ALR) Automatic Locking Retractor ** (ELR) Emergency Locking Retractor

EXTERIOR FEATURES
Body-coloured bumpers, side mouldings, mirrors and door handles
Front splash guards
Aluminum alloy wheels
Rear in-glass print antenna
Green tinted glass

SEATING AND TRIM	EL TOURING	EL PREMIUM
Reclining front bucket seats	•	•
Driver's seat manual height adjustment	•	•
Fabric interior	•	
Perforated leather-trimmed interior with heated front seats		•
Leather-wrapped steering wheel	•	•
Leather-wrapped shift knob (5 MT)	•	•
Wood-print trim with chrome accents	•	•
Center console armrest with storage	•	•
60/40 split fold-down rear seatback	•	•
Passenger seatback pocket	•	•
Front seat adjustable headrests	•	•
Rear seat outboard adjustable headrests	•	•
Carpeted floor mats	•	•

• = Standard



- ① Engineered specifically for your EL, these Alloy Sport Wheels add a sophisticated and sporty look.
- ② This 6-disc CD Changer lets you listen to hours of uninterrupted music so you can fully immerse yourself in the compelling style and driving performance of the EL.

COMFORT AND CONVENIENCE	EL TOURING	EL PREMIUM
CFC-Free air conditioning	•	•
Automatic Climate Control System		•
Micron Air Filtration System	•	•
Power-operated moonroof with tilt feature, privacy glass and sliding shade		•
Acura Music System with 120-watt AM/FM stereo, 4 speakers with integrated amplifiers, in-dash CD player and anti-theft feature	•	•
Power windows with driver's side one-touch up/down feature	•	•
Power door locks	•	•
Power heated exterior mirrors	•	•
Windshield wipers with variable intermittent feature	•	•
Illuminated ignition lock, and driver's power window and mirror switches	•	•
Illuminated power moonroof switch		•
Time delayed fading interior lights	•	•
Steering wheel-mounted cruise control	•	•
Tachometer	•	•
Adjustable steering column	•	•
Dual beverage holder	•	•
Remote fuel-filler-door and trunk release	•	•
Digital quartz clock	•	•
Low fuel warning light	•	•
Low windshield washer fluid warning light	•	•
Maintenance reminder light	•	•
Trunk light	•	•
Driver's footrest	•	•
Rear heater ducts	•	•
Driver and front passenger vanity mirrors	•	•
12-volt accessory socket	•	•
Overhead map light	•	•

• = Standard

EL AERO PACKAGE		(Available on Touring & Premium)
COLOURS		FEATURES
Nighthawk Black Pearl		Rear spoiler
Satin Silver Metallic		Front & rear skirts
Eternal Blue Pearl		Side skirts

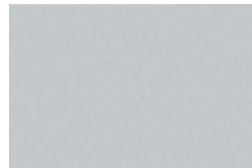
ACCESSORIES	
Personalize your Acura EL with Genuine Acura Accessories. Ask your Acura Dealer for additional information.	
CD changer	Rear spoiler
Engine block heater	Moonroof wind deflector
Full nose mask	Cargo net
Half nose mask	Gold plated emblem kit

EL Touring

EXTERIOR	INTERIOR
Nighthawk Black Pearl	Ebony Fabric
Satin Silver Metallic	Ebony Fabric
Radiant Ruby Pearl	Ebony Fabric
Eternal Blue Pearl	Parchment Fabric
Shoreline Mist Metallic	Parchment Fabric



Nighthawk Black Pearl



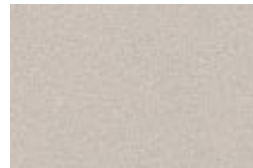
Satin Silver Metallic



Radiant Ruby Pearl



Eternal Blue Pearl



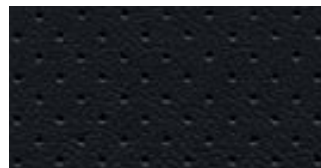
Shoreline Mist Metallic



Ebony Fabric
(Touring)



Parchment Fabric
(Touring)



Ebony Leather
(Premium)



Parchment Leather
(Premium)

THE ACURA EXPERIENCE

At Acura, our commitment to excellence goes far beyond engineering our vehicles. We're just as committed to making your



ownership experience a rewarding one. That's why every new Acura includes:
A complimentary tank of gas at time of delivery • Carpeted floor mats • 8,000 and 16,000 kilometre scheduled maintenance • 24-hour Roadside

Assistance for the first three years of ownership which includes Dispatch Emergency Roadside Service, Emergency Lockout Service, Traffic Accident Services and more. See your Acura Dealer for details.

ACURA PLUS

As a new Acura Owner, you can prolong your worry-free ownership experience by purchasing additional coverage. Just choose from our flexible selection of Mechanical Coverage that extends up to 7 years/160,000 km, whichever comes first. You can also extend your Roadside Assistance. Ask your Acura Dealer for full details.

WARRANTIES

Your new Acura vehicle includes the following warranties:
Major component – 5-year/100,000 km limited warranty
• Vehicle – 3-year/60,000 km distributors limited warranty • Rust Perforation – 5-year unlimited distance warranty • Surface Corrosion – 3-year unlimited distance warranty • Accessories – 3-year/60,000 km limited warranty (when installed by an

authorized Acura Dealer at time of new vehicle delivery). Regular maintenance items and parts are subject to normal wear and replacement, and therefore not covered by warranty. Certain other items are excluded and certain conditions apply. See your Acura Dealer for complete details.

LEASING AND FINANCING

We offer an array of options to make owning an Acura even easier. Ask your Acura Dealer for complete details on: Acura Leadership Leasing,* Acura Future Value Financing* and Conventional Financing.*

*A genuine service of Honda Canada Finance Inc. Conditions, restrictions and pre-payment requirements might apply O.A.C. *Acura Future Value Financing* does not apply in the province of Quebec.

Specifications, features, illustrations and equipment shown in the catalogue are based upon the latest available information at the time of publication. Although descriptions are believed to be correct, accuracy cannot be guaranteed. Honda Canada Inc. reserves the right to make changes at any time, without notice or obligation, in colours, specifications, accessories, materials and models. Some vehicles are shown with optional equipment. Acura, a division of Honda Canada Inc., 715 Milner Avenue, Toronto, Ontario, Canada M1B 2K5. 1-888-9ACURA-9. www.acura.ca. Acura, NSX, RL, TL, CL, EL, RSX and MDX are registered trademarks of Honda Motor Co. Ltd.

