

The BMW 3 Series
cabriolet



325Ci
330Ci



People who keep an open mind
have higher expectations than others.



Driving isn't an activity, it's an experience.
But of course that depends on what you are driving.



The basis of good looks
is a classic profile.





Heaven above.
And below.



■ **Xenon headlights** (high and low) illuminate the road ahead and to the side with brilliant clarity. These headlights also feature auto-levelling to adjust for varying passenger and cargo loads.



■ **Front bullet foglights** are cleanly integrated into the front bumper, illuminating the road ahead in bad weather.



■ **Expandable Cargo Space** frees space otherwise used by the softtop by collapsing the storage box into the roof of the trunk when extra cargo space is required. A lever on the side of the box makes this task quick and simple.



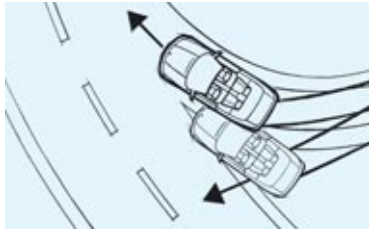
□ **Park Distance Control (PDC)** uses ultrasonic sensors in the front and rear bumpers to help you judge the distance to other cars and unseen objects when parking. The beeping becomes faster as your bumper approaches the object, turning into a constant tone when the distance is less than 30 centimetres.



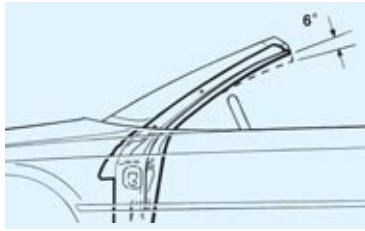
□ **Rain sensor** uses an infrared light to measure the amount of rain. When the wipers are in the "intermittent" mode, the rain sensor automatically adjusts the windshield wiping interval as needed. Also includes automatic headlamp function.



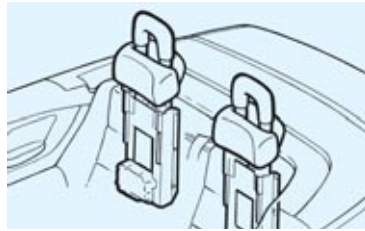
□ **Fully automatic softtop** provides the ease of one-touch raising and lowering. It is automatically stored in a special compartment under the flush-mounted body colour, magnesium tonneau cover (Standard on the 330Ci).



■ **Dynamic Stability Control (DSC III)** recognizes the risk of the car skidding very early and stabilizes the car within milliseconds. Also includes Dynamic Brake Control (DBC).



■ **Rigid body:** Design features to ensure the rigidity of the utilized body include special reinforcement of the A-pillar and the top of the windshield frame, more generous sills and special lateral reinforcements.



■ **Roll-over Protection System** greatly enhances occupant safety with sensors that can detect the possibility of a rollover. When the system is activated, steel bars – discreetly integrated into the rear headrests – deploy automatically. Along with the reinforced windshield frame.



□ **Interior auto-dimming mirror** increase driving safety and comfort for driving at night. Depending on the dazzle intensity, the interior mirror dims accordingly in order to minimize glare. When dazzling has ceased the mirrors return to the original degree of reflection. The programmable garage door opener is included.



□ **BMW Telephone preparation** makes the installation of a BMW car telephone system, available through BMW Accessories, as easy and convenient as possible. The compact, lightweight cellular phone integrates with your BMW to offer many benefits, including hands-free communication.



□ **On-board Navigation System** guides you conveniently and directly to your destination. In addition to providing driving instructions via voice, directional arrows or map display the system will provide destination-specific information.



■ **Multi-function leather sport steering wheel,** offers highly convenient operation, increased safety, and an ergonomical design that makes it fit especially well in the driver's hands.



■ **Electric front seat adjustment** with memory function for driver's seat and external mirrors; three personalized positions can be saved for each setting of the driver's seat and the external mirrors. (Memory function is optional on the 325Ci).



■ **Seat heating** is a welcome feature in cooler weather. With the touch of a button, you can individually select from three heat settings.



□ **CD Changer** integrates with the BMW In-dash CD Player to allow extra storage of up to 6 discs. Mounted into the trunk, the CD Changer is hidden from view.



□ **Harman Kardon Sound System** projects exceptional sound from upgraded speakers and amplification, plus a subwoofer and vehicle-speed-sensitive equalization. (Standard on 330Ci).



□ **Rear side airbags** protect your head and upper body in a side-on collision; the side airbag significantly reduces the risk of injury at pelvic and chest level.

Performance and Efficiency	325Ci	330Ci	Sound System	325Ci	330Ci
2.5-litre, 184 hp dual overhead cam (DOHC), 24-valve inline 6-cylinder engine	■	–	Anti-theft AM/FM stereo/CD sound system with 10 speakers, Radio Data System (RDS), Dolby B/C noise reduction, Auto-Store, pre-wired for CD changer	■	–
3.0-litre, 225 hp dual overhead cam (DOHC), 24-valve inline 6-cylinder engine	–	■	Harman Kardon sound system with 11 upgraded speakers (including subwoofer) and amplification, and vehicle-speed-sensitive equalization	□	■
5-speed manual transmission with direct 5th gear	■	■	In-dash CD player	■	■
5-speed STEPTRONIC 3-mode (automatic/sport automatic/clutchless manual) transmission with Adaptive Transmission Control (ATC)	□	□			
Double-VANOS steplessly variable valve timing	■	■			
Dual resonance intake system	■	■			
Handling, Ride and Braking					
4-wheel ventilated anti-lock disc brakes with electronic front/rear proportioning	■	■			
Engine-speed sensitive, variable-assist power steering	■	■			
Front and rear anti-roll (stabilizer) bars	■	■			
Multi-link rear suspension with cast-aluminum upper transverse arms	■	■			
Strut-type front suspension with forged-aluminum lower arms, hydraulic cushions	■	■			
Twin-tube gas-pressure shock absorbers	■	■			
Exterior					
Body-colour hardtop with integrated rear-window defroster, retractable coat hooks, and individual reading lights front and rear	□	□			
Body-coloured, heated power outside mirrors	■	■			
Fully automatic soft-top	□	■			
Fully-lined fabric soft-top with glass rear window and electric rear-window defroster	■	■			
Halogen free-form fog lights	■	■			
Headlamp washers	■	■			
Heated windshield-washer jets	■	■			
Metallic paint	□	□			
Tires:					
– 16 x 7.0 Star spoke alloy wheels, style 43, 205/55R-16 all-season tires	■	–			
– 17 x 7.0 Double spoke alloy wheels, style 79, 205/50R-17 all-season tires	–	■			
White indicator lenses, front and rear	■	■			
Xenon headlights with auto-levelling and high-beam function	■	■			
Instrumentation and Controls					
4-function on-board computer	■	■			
Check Control vehicle monitor system with pictogram	■	■			
Service Interval Indicator with kms-to-service readout	■	■			
Telephone prewiring	□	□			
Tire pressure monitor system	–	□			
Interior Seating and Trim					
3-position driver's seat and exterior mirror memory	□	■			
3-spoke multi-function leather sport steering wheel with fingertip cruise, audio and accessory phone controls	■	■			
3-stage, thermostatically controlled heated front seats	■	■			
8-way power front seats (driver's)	■	■			
Front center armrest with storage compartment	■	■			
Interior Trim:					
– Aluminum	□	□			
– Birch wood (optional with Leatherette and Montana Leather)	■	□			
– Myrtle wood (optional with Leatherette and Montana Leather)	■	□			
– Silk screen Paint Dark Grey (standard with Cloth)	■	–			
– Titanium (standard with Leatherette and Montana Leather)	■	□			
Seatback easy-entry feature with memory and 2x-speed power fore-aft control	■	■			
Upholstery:					
– Leatherette	■	–			
– Montana Leather	□	■			
– Tex 2000 Cloth	■	–			

Comfort and Convenience	325Ci	330Ci	Safety and Security (continued)	325Ci	330Ci
Automatic air conditioning and air recirculation	■	■	Front-door-mounted side-impact airbags	■	■
Automatic-dimming inside rear-view mirror, including garage door opener	□	□	Interlocking door anchoring system to help protect against door intrusion in side impacts	■	■
Automatic tilt-down of passenger's side-view mirror (when cabriolet is shifted into reverse gear)	■	■	Rear side-impact airbags	□	□
BMW Ambiance Lighting	■	■	Rollover Protection System	■	■
Car & Key Memory	■	■	Seat-integrated front safety belts with automatic pre-tensioners and force limiters	■	■
Electric interior trunk release	■	■	Space-saver spare wheel and tire	■	■
Expandable cargo space with top raised	■	■	BMW Maintenance Program		
Front map reading and footwell lights	■	■	BMW No-Charge Scheduled Maintenance (3 years/60,000 kms) ¹	■	■
Fully finished trunk with reversible mat and drop-down tool kit	■	■	Premium Packages		
Keyless entry with multi-function remote control, including 2-step unlocking and remote trunk release	■	■	Auto dimming interior mirror; Electric seats with driver memory; Harman Kardon Sound System; Lumbar Support	□	–
Locking glovebox with rechargeable take-out flashlight	■	■	Auto dimming interior mirror; Ski bag; Lumbar Support; Park Distance Control	–	□
Multi-function steering wheel with cruise control	■	■	Sport Packages		
Power front and rear windows with "one touch" up/down operation	■	■	Sport seats; Sport suspension; 17 x 8.0 Star spoke alloy wheels, style 44, 225/45R-17; performance tires	□	–
Pre-wiring for alarm and CD changer	■	■	Sport seats; Sport suspension; 17 x 8.0 Star spoke alloy wheels, style 96, 225/45R-17; performance tires	–	□
Ski bag	□	□	M Sport Package¹		
Tilt/telescopic steering column	■	■	Anthracite roof liner; Black aluminum cube trim; High-gloss Shadow Line; M Aerodynamic package; M Double spoke alloy wheels, 17 x 7.5 front, 225/45R-17; 17 x 8.5 rear, 245/40R-17 performance tires; M multi-function leather sport steering wheel; Sport seats.	–	□
Safety and Security					
Anti-lock Braking System (ABS), incl. CBC	■	■	MV-spoke alloy wheels, 18 x 8.0 front, 255/40R-18,	–	□
Automatic fuel cut-off, triggered by airbag deployment	■	■	Silver aluminum cube trim	–	□
Automatic-Locking Retractors (ALR) on all passenger safety belts (for installation of child restraint seats)	■	■	Navigation Package		
Automatic Stability Control + Traction (ASC+T)	■	■	BMW On-Board navigation; Canada Navigation CD	□	□
Battery Safety Terminal (BST)	■	■			
Central locking system (including glovebox door) with centre console switch (leaves gas filler door unlocked), double-lock feature and 2-step unlocking	■	■			
Coded Driveaway Protection	■	■			
Crash sensor that automatically turns on hazard lights and interior lights, and unlocks doors	■	■			
Driver's and passenger's front airbag Supplemental Restraint System (SRS) with "smart" dual-threshold, dual-stage deployment and sensor to help prevent unnecessary passenger's airbag deployment	■	■			
Dynamic Stability Control (DSC III), incl. DBC	■	■			

¹ See Retailer for complete details.

Weight		325Ci	330Ci
Unladen weight	kg	1615 (1645)	1645 (1680)
Weight distribution, front/rear			
Manual transmission	%	48.8/51.2	49.3/51.7
Automatic transmission	%	49.2/50.8	48.9/51.1
Max. gross weight man/auto	kg	2015/2045	2040/2075
Max. payload	kg	400	400
Max. axle load, front/rear	kg	945/1155	950/1170
Max. root load	kg	75	75

Engine		325Ci	330Ci
Litres/type (with Double-VANOS)		2.5/in-line 6	3.0/in-line 6
Displacement	cm ³	2494	2979
Bore/stroke	mm	84.0/75.0	84.0/89.6
Nominal output/rpm	hp	184/6000	225/5900
Max. torque/rpm	lb-ft	175/3500	214/3500
Compression ratio	:1	10.5	10.2
Fuel Grade		Premium Unleaded	Premium Unleaded

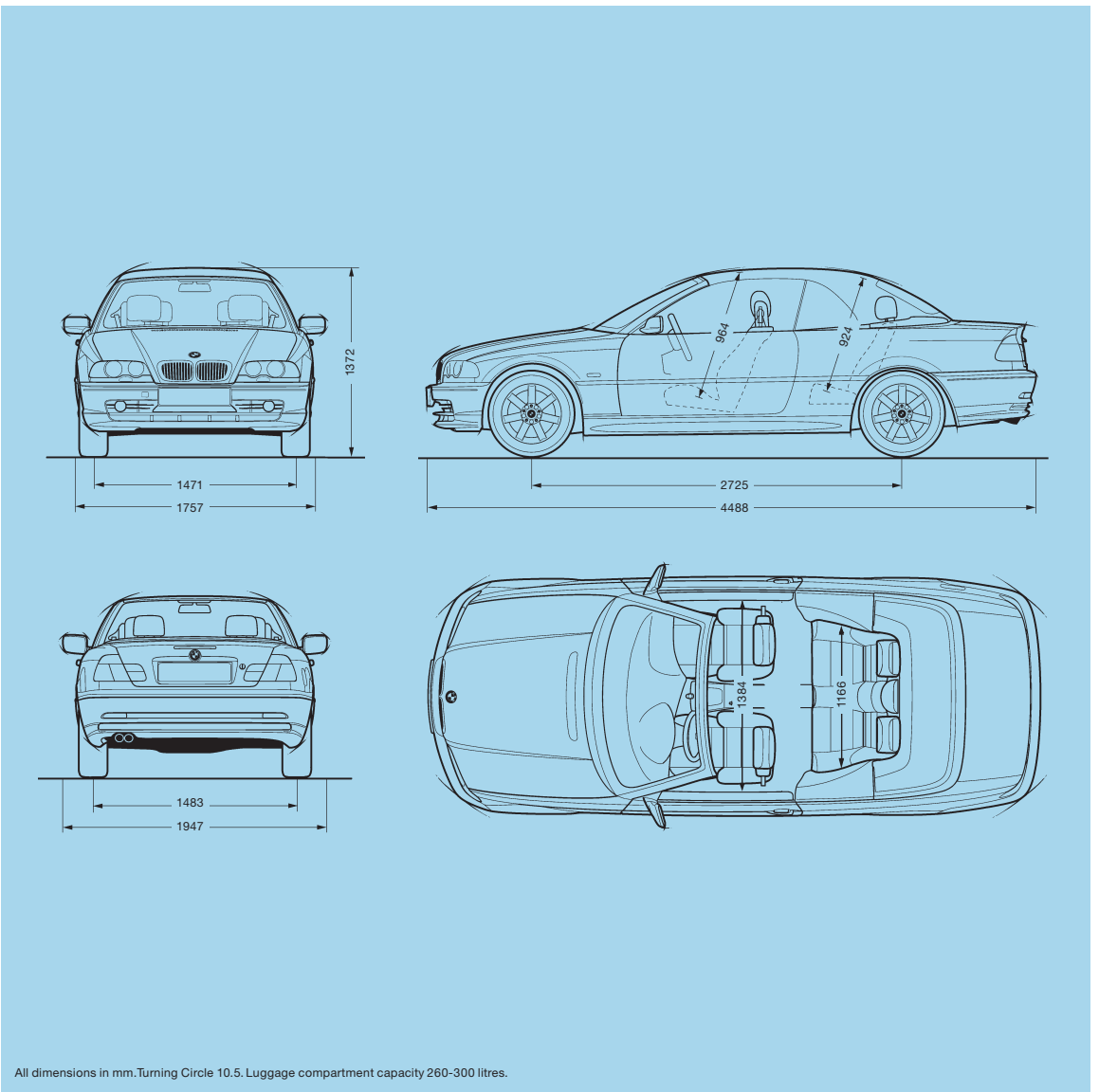
Brakes		325Ci	330Ci
Braking system		4 channel ABS	4 channel ABS
Brake type, front and rear		ventilated disc	ventilated disc
Brake diameter, front/rear	mm	300/294	325/320

Performance		325Ci	330Ci
Drag coefficient	C _d	0.35	0.35
Top speed ¹	km/h	206 ¹	206 ¹
Acceleration – 0-100 km	sec	8.3 (9.5)	7.5/7.9

Wheels		325Ci	330Ci
Tire dimensions (standard)		205/55R-16	205/50R-17
		All season	All season
Wheel dimensions (standard)		7Jx16	7Jx17
Material		Cast alloy	Cast alloy

Fuel Consumption²		325Ci	330Ci
Manual transmission			
City/Highway	L/100 km	12.4/8.0	11.9/7.8
Automatic transmission			
City/Highway	L/100 km	12.2/8.2	12.6/8.3

Transmission		325Ci	330Ci
Drive configuration		Rear	Rear
Gear ratios – manual transmission			
I/II	:1	4.23/2.52	4.21/2.49
III/IV	:1	1.66/1.22	1.66/1.24
V/R	:1	1.00/4.04	1.00/3.85
Final drive ratio	:1	3.46	3.07
Gear ratios – automatic transmission			
I/II	:1	3.67/2.00	3.67/2.00
III/IV	:1	1.41/1.00	1.41/1.00
V/R	:1	0.74/4.10	0.74/4.10
Final drive ratio	:1	3.46	3.38



All dimensions in mm. Turning Circle 10.5. Luggage compartment capacity 260-300 litres.

Figures in () apply to vehicles with automatic transmission.
¹ Top speed limited electronically.
² NR Can-estimated figures are for comparison only. Your actual mileage will vary, depending upon speed and trip length actual highway free consumption will most likely be lower.