

BMW 3 Series  
coupé



325Ci  
330Ci



The world is full of amazing sights.  
Some of them can even drive.



**A clear idea is what takes you to your destination.**







Good design is not an art.  
It's a passion.



■ **Xenon headlights** (high and low beam) illuminate the road ahead and to the side with brilliant clarity. These headlights also feature auto-leveling to adjust for varying passenger and cargo loads.



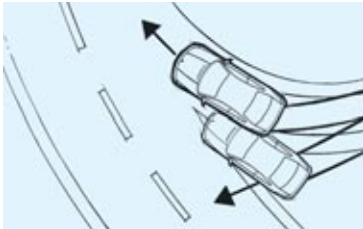
■ **Heated headlight washers** help keep lights clean of ice, mud, road salt and other coatings for maximum road lighting and enhanced driving safety.



■ **Front bullet foglights** are cleanly integrated into the front bumper, illuminating the road ahead in bad weather.



■ **Automatic Climate Control system** includes Automatic AirRecirculation, which is activated when a sensor detects certain pollutants in the outside air. Inside, cabin air continuously passes through a microfilter that removes pollen, dust and spores.



■ **Dynamic Stability Control (DSC III)** recognizes the risk of the car skidding very early and stabilizes the car within milliseconds. Also includes Dynamic Brake Control (DBC).



■ **Multi-function leather sport steering wheel**, offers highly convenient operation, increased safety and an ergonomic design that makes it fit especially well in the driver's hands.



■ **Car memory** allows you to program a full range of individual settings and features on your car, including the Follow-me-Home function. **Key memory** allows you to set your preferred seat position of the electrically adjustable driver's seat. Furthermore, it is possible to set the automatic climate control to the interior temperature and air distribution to a specific key.



■ **Driver and front passenger airbags** protect your head and upper body in a frontal collision from hitting the steering wheel or instrument panel; depending on the severity of the impact, the airbags are inflated via a two-stage gas generator (impact-depending system); the front passenger airbag comes complete with a seat occupancy detector.



■ **Head Protection System (HPS)** for the driver and front passenger provide effective protection of your head and upper body in a collision from the side.



□ **Rain sensor** uses an infrared light to measure the amount of rain. When the wipers are in the "intermittent" mode, the rain sensor automatically adjusts the windshield wiping interval as needed. Also includes automatic headlamp function.



□ **Park Distance Control (PDC)** uses ultrasonic sensors in the rear bumper to help you judge the distance to other cars and unseen objects when parking. The beeping becomes faster as your bumper approaches the object, turning into a constant tone when the distance is less than 30 centimetres.



□ **BMW Telephone preparation** makes the installation of a BMW car telephone system, available through BMW Accessories, as easy and convenient as possible. The compact, lightweight cellular phone integrates with your BMW to offer many benefits, including hands-free communication.



□ **Glass sunroof** allows natural light to enter the cabin. For convenience, it has a one-touch open and close feature with anti-trapping, as well as a tilt function for ventilating the inside of your car on hot summer days.



□ **On-board Navigation System** guides you conveniently and directly to your destination. In addition to providing driving instructions via voice, directional arrows or map display, the system will provide destination-specific information.



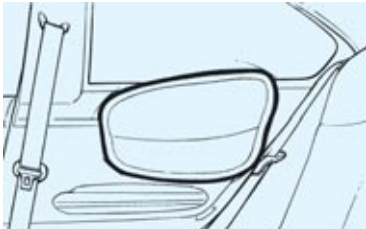
□ **Ski bag** helps to allow safe, clean transport of skis, ski poles and other long, thin objects. When not extended for use, the ski bag can be stored out of sight.



□ **Harman Kardon Sound System** projects exceptional sound from upgraded speakers and amplification, plus a subwoofer and vehicle-speed-sensitive equalization.



□ **Electric Seats with Driver Memory** enable the driver and passenger to precisely adjust their seat to individual preferences. The driver's mirror positioning is also retained in the seat memory.



□ **Rear side airbags** protect your head in a side-on collision; the side airbag significantly reduces the risk of injury at pelvic and chest level.

Performance and Efficiency	325Ci	330Ci
2.5-litre, 184 hp dual overhead cam (DOHC), 24-valve inline 6-cylinder engine	●	–
3.0-litre, 225 hp dual overhead cam (DOHC), 24-valve inline 6-cylinder engine	–	●
5-speed manual transmission with direct 5th gear	●	●
5-speed STEPTRONIC 3 mode (automatic/sport automatic/clutchless manual) transmission with Adaptive Transmission Control (ATC)	○	○
Double-VANOS steplessly variable valve timing	●	●
Dual resonance intake system	●	●
Handling, Ride and Braking		
4-wheel ventilated anti-lock disc brakes with electronic front/rear proportioning	●	●
Automatic Stability Control + Traction (ASC + T)	●	●
Dynamic Stability Control (DSC III)	●	●
Engine-speed-sensitive, variable-assist power steering	●	●
Front and rear anti-roll (stabilizer) bars	●	●
Multi-link rear suspension with cast-aluminum upper transverse arms	●	●
Sport suspension calibration	●	●
Strut-type front suspension with forged-aluminum lower arms, hydraulic cushions	●	●
Twin-tube gas-pressure shock absorbers	●	●
Exterior		
Chrome and body-colour detail trim	●	●
Daytime running lights	●	●
Halogen free-form foglights	●	●
Heated windshield washer jets and dual-power mirrors	●	●
High-pressure headlight cleaning system	●	●
Metallic paint	○	○
Tires		
– 16 x 7.0 Star spoke alloy wheels, style 43, 205/55R-16 all-season tires	●	–
– 17 x 7.0 Radial spoke alloy wheels, style 79, 205/50R-17 all-season tires	–	●
Titanium-finish trim on headlight and foglight panels and front bumper air inlet	–	●
White indicator lenses	●	●
Xenon headlights with auto-levelling and high-beam function	●	●
Sound System		
Anti-theft AM/FM stereo sound system with 6 speakers, Radio Data System (RDS), Auto-Store and 3-channel FM diversity antenna system; pre-wired for CD changer	●	●
Harman Kardon sound system with 12 speakers (including 2 subwoofers), upgraded amplification and vehicle-speed-sensitive equalization	○	○
In-dash CD player	●	●

Interior Seating and Trim	325Ci	330Ci
3-spoke leather-wrapped multi-function sport steering wheel with fingertip cruise control, audio and accessory phone controls	●	●
3-stage, thermostatically controlled heated front seats	○	●
6-way adjustable front seats	●	●
10-way adjustable front sport seats	○	○
Centre rear safety belt	●	●
Dual power front seats with 3-position driver's seat and exterior mirror memory (includes automatic tilt-down of passenger's side-view mirror when vehicle is shifted into reverse gear)	○	○
Front centre armrest with storage compartment	●	●
Front seatback storage nets	●	●
Interior trim		
– Aluminum (optional, not with Cloth Laser/Alcantara)	○	○
– Birch wood (optional with Leatherette or Montana Leather)	○	○
– Myrtle wood (optional with Leatherette or Montana Leather)	○	○
– Silk-Screen Paint Dark Grey (standard with Tex 2000 Cloth)	●	–
– Titanium (standard with Leatherette or Montana Leather)	●	●
Lumbar support, 4-way adjustable	○	○
Ski bag	○	○
Split fold-down rear seats with centre armrest	●	●
Upholstery		
– Cloth Laser Anthracite/Alcantara Combination (only with M Sport package)	–	○
– Leatherette	●	●
– Montana Leather	○	○
– Tex 2000 Cloth	●	●
Comfort and Convenience		
2-way power glass moonroof with one-touch operation, sliding interior sunshade and wind deflector	○	●
Alarm and CD changer prewiring	●	●
Automatic climate control and air recirculation	●	●
Automatic-dimming inside rear-view mirror	○	○
BMW Ambiance Lighting	●	●
Dual power outside mirrors	●	●
Electric interior trunk release	●	●
Front/rear map-reading, footwell and visor-mirror lights	●	●
Fully finished trunk with drop-down tool kit	●	●
Keyless entry with multi-function remote control, including 2-step unlocking and remote trunk release	●	●
Locking glovebox with rechargeable take-out flashlight	●	●
Multi-function steering wheel with cruise control	●	●
Park Distance Control (PDC), rear	○	○
Power front windows with "one touch" up/down operation; power rear windows with "one touch" down	●	●

Comfort and Convenience	325Ci	330Ci
Rain-sensing windshield wipers, incl. automatic headlight function	○	○
Tilt/telescopic steering wheel	●	●
Vehicle & Key Memory	●	●
Instrumentation and Controls		
4-function on-board computer	●	●
Aluminum-finish instrument rings	–	●
Check Control vehicle monitor system with pictogram	●	●
Integrated On-board Navigation system with high-function on-board computer <sup>1</sup>	○	○
Service Interval Indicator with kms-to-service read-out	●	●
Telephone prewiring	○	○
Tire pressure monitor system	–	○
Safety and Security		
Anti-lock Braking System (ABS)	●	●
Automatic fuel cut-off, triggered by airbag deployment	●	●
Automatic-Locking Retractors (ALR) on all passenger safety belts (for installation of child restraint seats)	●	●
Battery Safety Terminal (BST)	●	●
Central locking system with centre console switch (leaves gas filler door unlocked), double-lock feature and 2-step unlocking	●	●
Coded Driveaway Protection	●	●
Crash sensor that automatically turns on hazard lights and interior lights and unlocks doors	●	●
Driver's and passenger's front airbag Supplemental Restraint System (SRS) with "smart" dual-threshold, dual-stage deployment and sensor to help prevent unnecessary passenger's airbag deployment	●	●
Front-door-mounted side-impact airbags	●	●
Full-use spare alloy wheel and tire	●	●
Head Protection System (HPS)	●	●
Height-adjustable front safety belts with automatic tensioners and force limiters	●	●
Interlocking door anchoring system to help protect against door intrusion in side impacts	●	●
Rear side airbags	○	○
BMW Maintenance Program		
BMW No-Charge Scheduled Maintainance (3 years/60 000 km) <sup>1</sup>	●	●

1 See Retailer for complete details.

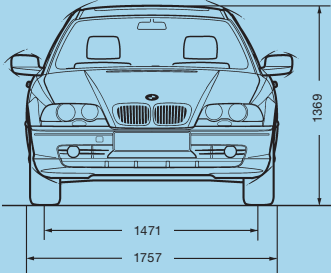
Premium Package	325Ci	330Ci
Electric seats with driver memory; Glass sunroof; Harman Kardon sound system; Heated front seats; Lumbar Support	○	–
Auto dimming interior mirror; Electric seats with driver memory; Harman Kardon sound system; Lumbar Support; Montana Leather; Ski bag	–	○
Sport Package		
Sport seats; 17 x 8.0 Star spoke alloy wheels, style 44, 225/45R-17; performance tires	○	–
Sport seats; 17 x 8.0 Star spoke alloy wheels, style 96, 225/45R-17; performance tires	–	○
M Sport Package <sup>1</sup>		
Anthracite roof liner; Black Aluminum Cube trim; High-gloss Shadow Line; M Aerodynamic package; M Double spoke alloy wheels, 17 x 7.5 front, 225/45R-17; 17 x 8.5 rear, 245/40R-17 performance tires; M multi-function leather sport steering wheel; Sport seats; Sport suspension upgrade.	–	○
M V-spoke alloy wheels, 18 x 8.0 front, 225/40R-18, 18 x 8.5 rear, 255/35R-18 performance tires	–	○
Silver Aluminum Cube trim	–	○
Navigation Package		
BMW On-board Navigation; Canada Navigation CD	○	○

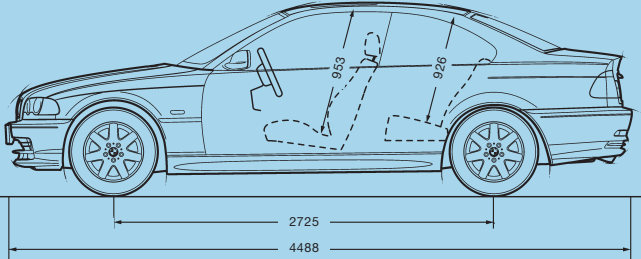
Weight			
Unladen	kg	325Ci 1475/1515	330Ci 1520/1540
Weight distribution, front/rear			
Manual transmission	%	50.4/49.6	50.1/49.9
Automatic transmission	%	50.8/49.2	50.6/49.4
Engine			
Litre/type (with Double-VANOS)		2.5/DOHC inline 6, 24V	3.0/DOHC inline 6, 24V
Displacement	cm <sup>3</sup>	2494	2979
Bore/stroke	mm	84.0/75.0	84.0/89.6
Nominal output/rpm	hp	184/6000	225/5900
Max torque/rpm	lb-ft	175/3500	214/3500
Compression ratio	:1	10.5	10.2
Fuel grade		Premium Unleaded	Premium Unleaded
Transmission			
Drive configuration		Rear	Rear
Manual gear ratios			
I/II	:1	4.23/2.52	4.21/2.49
III/IV	:1	1.66/1.22	1.66/1.24
V/R	:1	1.00/4.04	1.00/3.85
Final drive ratio	:1	3.15	2.93
Automatic gear ratios			
I/II	:1	3.67/2.00	3.67/2.00
III/IV	:1	1.41/1.00	1.41/1.00
V/R	:1	0.74/4.10	0.74/4.10
Final drive ratio	:1	3.46	3.38
Brakes			
Braking system		4-channel ABS	4-channel ABS
Brake type, front and rear		ventilated disc	ventilated disc
Brake diameter front/rear	mm	300/294	325/320
Performance			
Drag coefficient	C <sub>d</sub>	0.32	0.32
Top speed <sup>1</sup>	km/h	206	206
Acceleration 0-100 km/h <sup>2</sup>	sec	7.6 (8.6)	6.8 (7.4)

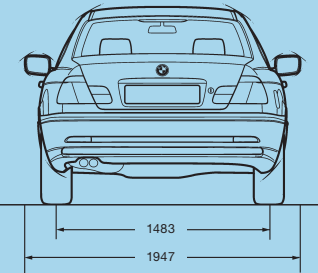
Figures in ( ) apply to vehicles with automatic transmission.

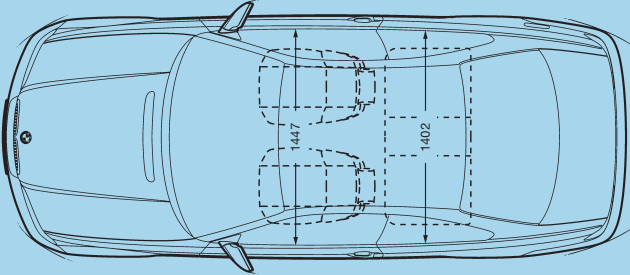
- 1 Top speed limited electronically.
- 2 BMW AG, test results. Actual acceleration results may vary, depending on specification of vehicle, road and environmental conditions, testing procedures and driving style. These results should be used for comparison only and verification should not be attempted on public roads. **BMW urges you to obey all posted speed laws and always wear safety belts.**
- 3 NR Can-estimated figures are for comparison purposes only. Your actual mileage will vary, depending on speed, driving habits, trip length and driving conditions; actual mileage will most likely be lower.

Wheels			
Tire dimensions	(standard)	325Ci 205/55R-16 all-season	330Ci 205/50R-17 all-season
Wheel dimensions	(standard)	7J x 16	7J x 17
Material		Cast alloy	Cast alloy
Fuel consumption <sup>3</sup>			
5-speed manual transmission			
City	L/100 km	11.5	11.3
Highway	L/100 km	7.3	7.3
5-speed automatic transmission			
City	L/100 km	11.8	11.6
Highway	L/100 km	7.9	7.7









Illustrations above:  
All dimensions in mm. Turning Circle 10.5; Luggage compartment capacity 410 litres.