

zoom-zoom

zoom-zoom

2003 **TRIBUTE**

Get more detailed information on your Mazda Tribute. Check out our website at www.mazda.ca for specifications and features, option packages, pricing, financing and to find a dealer near you.



Mazda Canada Inc., Suite 400, 305 Milner Avenue, Scarborough, Ontario M1B 3V4
Printed in Canada. Part No. 9999-92-TR03-EN



Finally. An **SUV** where the "S"
truly means something.

Most SUVs do pretty well on the "U" part of the equation. But if you want an SUV designed with the soul of a sports car, the list gets considerably shorter. The 2003 Mazda Tribute.



What sets it apart will set you free.

Just think of the freedom that you'll have with the 200 horsepower of the Mazda Tribute V6 models.

An electronically controlled 4-speed automatic transmission keeps you running along smoothly. Lap up highway miles and mountain roads alike without drawing a deep breath. Go through city traffic.

Go wherever you please. Yes. It was born of Mazda's sports car heritage, but this is an SUV. Responsive power is only the start. There's a fully independent suspension for crisp handling. Rack-and-pinion steering has a positive, linear feel. Big all-season radial tires grip the road, wet or dry. Bottom line: The Mazda Tribute puts the "free" in freedom.



Fun expands to fill the space provided.

Keeping this law of Mazda Tribute in mind, be ready to thoroughly enjoy yourself. In any number of ways. Start with the big picture – the flexible seating and cargo arrangements. Three-week camping trip, anyone? Fold the rear seatback and load up. Want to keep your gear out of sight? With the seatback up, a retractable cover does the job (LX, ES). The liftgate window opens separately, and the opening's big enough to let you carry the proverbial 4x8 sheet of plywood or building material of your choice. Versatility extends to the exterior, where a roof rack is standard equipment on LX and ES models. You can expand the rack's usefulness with the available attachments for carrying bicycles or skis. And if you still need further capacity for fun, the available Towing Package lets you tow up to 1,588 kg and includes the wiring harness for your trailer. There's also an available bike rack that mounts on the trailer hitch. Which brings us to the first corollary to our law – in a Mazda Tribute, there's no such thing as too much fun.


The roof rack expands your space beyond the interior. It's the perfect place to tie down snowboards or any other gear.

The Mazda Tribute LX and ES models have a 60/40 split rear seatback, and DX models have a one-piece seatback. Either way, when it's folded forward, you have tons of cargo space and a flat load floor to make it especially useful.




Here, your reach always equals your grasp.


When it comes to realizing ambitions, the Mazda Tribute puts you on a fast track. Comfort, convenience, sporty performance, adrenaline rush – all there, at your fingertips. The driver's seat prepares you by delivering great support. You can achieve complete mastery of your environment with minimal effort. Adjust the tilt steering wheel, set your outside mirrors, raise or lower the windows, lock the doors, bring on the music – all the controls are close and clear. The gauges deliver your operating information efficiently and quickly. And with great outward visibility, you'll know immediately when your goals are in sight. In here, nothing's too long a reach.



Both the ES and LX models have an overhead storage console that's particularly handy for quick access to your sunglasses. Also available on DX models as part of the Appearance Package.



Let the good tunes roll – a 100-watt AM/FM/CD stereo with 4 speakers is standard equipment on DX and LX models. For the ES, there's a 190-watt premium AM/FM/cassette stereo with an in-dash 6-disc CD changer and 7 speakers, including a subwoofer. (Also available on the LX as a part of the Sports Package.)



They're not just for coffee anymore – the two cup holders in the center console come in handy in lots of ways. Rear-seat passengers get their own cup holders. The DX console has an open storage tray, the DX-V6, LX and ES have a large console with a covered storage tray.

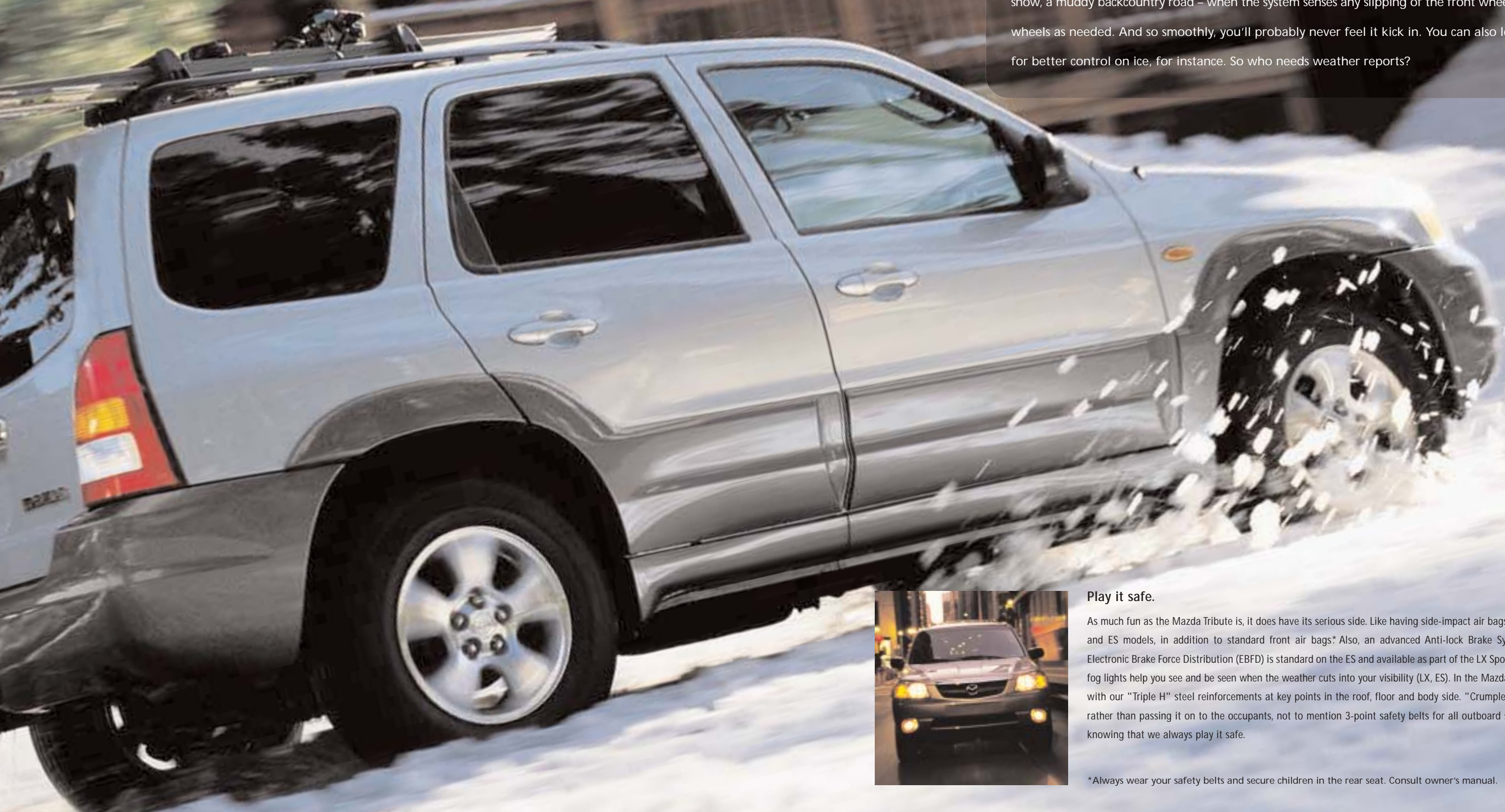
Silver meter rings available early 2003.

Not a bad **seat** in the house.

Lots of entertainment venues could learn something here – Mazda Tribute seating is first-class all the way. Orthopedically designed front bucket seats feature enhanced lumbar support (LX, ES), especially appreciated on long trips. For backseat passengers, the "theater style" seats are raised for a better view, yet the step-in height remains low for easy access. The rear seatbacks also recline on the LX and ES. And by the way, the admission price is right.

Weather or not, here we come.

If you seek snow – or vice versa – you'll be happy to know the Mazda Tribute has available **AWD** that makes it a great foul-weather friend. The technically advanced Rotary Blade Coupling design is an "as-required" system that automatically engages when road conditions go bad and require extra traction. Rain, sleet, snow, a muddy backcountry road – when the system senses any slipping of the front wheels, it transfers power to the rear wheels as needed. And so smoothly, you'll probably never feel it kick in. You can also lock the center differential, useful for better control on ice, for instance. So who needs weather reports?



Play it safe.

As much fun as the Mazda Tribute is, it does have its serious side. Like having side-impact air bags* on both the LX and ES models, in addition to standard front air bags*. Also, an advanced Anti-lock Brake System (ABS) with Electronic Brake Force Distribution (EBFD) is standard on the ES and available as part of the LX Sports Package. Front fog lights help you see and be seen when the weather cuts into your visibility (LX, ES). In the Mazda Tribute you're surrounded by a "safety cage" with our "Triple H" steel reinforcements at key points in the roof, floor and body side. "Crumple zones" front and rear, absorb impact energy rather than passing it on to the occupants, not to mention 3-point safety belts for all outboard seating positions. So go have some fun. And relax, knowing that we always play it safe.



*Always wear your safety belts and secure children in the rear seat. Consult owner's manual.

2003 MAZDA TRIBUTE ACCESSORIES



- Trailer-hitch bike attachment • Cassette player • All-weather floor mats • Dust and pollen filter • Anti-theft alarm system • Cargo net
- Cargo floor-liner • Cargo divider/Pet guard • Rear mud guards
- Front mask • Moonroof wind deflector • Rear spoiler • Hood deflector • Bike attachment • Ski attachment • Alloy wheels
- Roof carrier cargo box • Wheel locks (set of 4) • Rear bumper step plate • Side-step tubes • Engine block heater • DVD entertainment system (N/A for vehicles w/ moonroof)

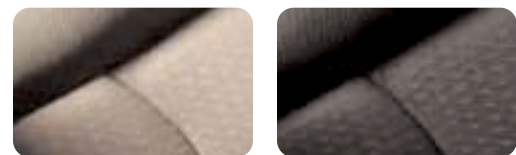
Pictured below from left to right: trailer-hitch bike attachment, front mask, rear mud guards and cargo net.



For further information please refer to the Mazda Accessories Brochure. Mazda notes that all Genuine Mazda Accessories, if installed by your Mazda Dealer prior to or at an initial vehicle retail delivery, carry the same new-vehicle warranty as the Mazda Tribute.

COLOUR COMBINATIONS

EXTERIOR	EXTERIOR LOWER (DX)	EXTERIOR LOWER (LX/ES)	INTERIOR
Mystic Black	Medium Titanium	Mineral Grey	Beige
Glacier Silver Metallic	Storm Grey	Dark Titanium Metallic	Dark Grey
Dark Titanium Metallic	Storm Grey	Dark Titanium Metallic	Dark Grey
Calypso Blue Metallic	Storm Grey	Dark Titanium Metallic	Dark Grey
Redfire Metallic	Storm Grey	Dark Titanium Metallic	Dark Grey
Gold Ash Metallic	Storm Grey	Dark Titanium Metallic	Dark Grey
Light Tundra	Storm Grey	Dark Titanium Metallic	Dark Grey
Merlot Pearl	Medium Titanium	Mineral Grey	Beige



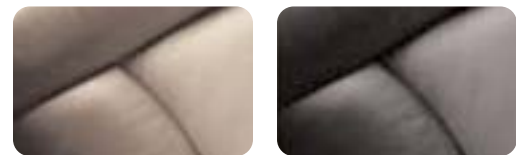
Beige Cloth DX

Dark Grey Cloth DX



Beige Cloth LX

Dark Grey Cloth LX



Beige Leather ES

Dark Grey Leather ES



Mystic Black



Gold Ash Metallic



Glacier Silver Metallic



Light Tundra



Dark Titanium Metallic



Merlot Pearl



Calypso Blue Metallic



Redfire Metallic

2003 TRIBUTE SPECIFICATIONS

ENGINE	DX	DX-V6, LX, ES
Type	2.0L DOHC 16-valve I4	3.0L DOHC 24-valve V6
Displacement	1,989 cc	2,967 cc
Bore and stroke	84.8 x 88.0mm	89.0 x 79.5mm
Compression ratio	9.6:1	10.0:1
Horsepower SAE net	130 @ 5,400 rpm	200 @ 6,000 rpm
Torque, SAE net lb. ft.	135 lb. ft. @ 4,500 rpm	200 lb. ft. @ 4,750 rpm
Fuel system	Sequential Electronic multi-point Fuel Injection (EFI)	Sequential Electronic multi-point Fuel Injection (EFI)
Valve-train	4 valves per cylinder Mechanical lash adjuster	4 valves per cylinder Hydraulic lash adjuster
Engine block	Cast iron	Aluminum die cast
Cylinder head	Aluminum die cast	Aluminum die cast
Emission control	3-way close coupled catalytic converter	3-way close coupled & underbody catalytic converter
Recommended fuel	Regular (unleaded)	Regular (unleaded)

DRIVETRAIN

Type	Front engine/front-wheel drive, optional AWD	
Transmission	5-speed manual	
	4-speed automatic (standard on DX-V6, LX, ES)	
	Manual (I4) 2WD/AWD	Automatic (V6) 2WD/AWD
Gear ratios: 1st	3.666	2.889
2nd	2.059	1.571
3rd	1.310	1.000
4th	1.030	0.698
5th	0.837	n/a
Reverse	3.454	2.310
Final drive	4.588	3.776
AWD system	Rotary blade coupling with lock-up function	
Transfer case AWD	I4 MT: Integrated type, V6 AT: Add on type	

ELECTRICAL SYSTEM

Battery	I4: GR96R (12V-52AH), V6: GR40R (12V-60AH)
Alternator	I4/V6: 12V-110AH

ELECTRICAL SYSTEM (cont'd.)

Starter	I4: 1.5kW, V6: 1.4kW
Ignition system	I4/V6: Full transistor breakerless electronic
Fan	Electric fan system

CHASSIS

Frame	Monocoque body
2WD front suspension	MacPherson struts supported by L-shape Lower Control Arms (LCAs)
2WD rear suspension	Multi-link suspension with two lateral links and trailing arms
AWD front suspension	MacPherson struts supported by L-shape Lower Control Arms (LCAs)
AWD rear suspension	Multi-link suspension with two lateral links and trailing arms
Steering	Rack-and-pinion steering with engine-speed-sensitive power assistance
Steering ratio	15.0
Min. turning circle	10.8m/11.2m (215 tires/235 tires) (curb-to-curb)
Brakes	Front: single piston ventilated disc (278mm) brakes Rear: drum brakes (229mm) Optional ABS with Electronic Brake Force Distribution System (EBFD) (standard on ES & LX Sports Package)
Parking brake	Mechanical, hand-operated on rear wheels
Curb weight (kg)	I4 2WD: 1,402kg, I4 AWD: 1,472kg, V6 2WD: 1,493kg, V6 AWD: 1,567kg

WHEELS AND TIRES

Wheels	16" styled steel wheels (DX) 16" 6-spoke alloy wheels (DX Appearance Package) 16" 5-spoke alloy wheels (LX, ES)
Tires	215/70R16 all-season BSW tires (DX, DX Appearance Package) 235/70R16 all-season BSW tires (LX, ES)

CAPACITIES

Seating	5 Persons
Washer fluid tank	4.5L (common tank for windshield and rear window)
Fuel tank	61.0L
Engine oil	I4: 4.5L, V6: 5.7L
Coolant capacity	I4: 8.0L, V6: 10.0L

EXTERNAL DIMENSIONS (mm)

Wheelbase	2,620
Track (fr/r)	1,540/1,520 (215 tires); 1,550/1,530 (235 tires)
Overall length	4,395
Overall width	1,800/1,825 (215 tires/235 tires)
Overall height	Without roof rack: 1,707 (215 tires)/1,721 (235 tires) With roof rack: 1,761 (215 tires)/1,775 (235 tires)
Ground clearance	200 (215 tires)/214 (235 tires)
Coefficient of drag (Cd)	0.39

INTERNAL DIMENSIONS (mm)

Headroom (fr/r)	976/951 (w/ moonroof); 1,026/995 (w/o moonroof)
Legroom (fr/r)	1,058/938
Shoulder room (fr/r)	1,375/1,241
Hiproom (fr/r)	1,355/1,240
Width	1,032 (between wheel house)
Cargo length	922 (rear seat to tailgate)
Cargo width	1,335 (between quarter trims)
Height of luggage area	970
Tailgate opening	840
Cargo volume	1,820L (behind front seat back)
SAE Cargo volume	937L (behind rear seat back)

TRANSPORT CANADA FUEL ECONOMY RATINGS

	2WD		AWD	
	I4 MT	V6AT	I4 MT	V6AT
City	10.2L/100km	12.6L/100km	10.8L/100km	13.0L/100km
Highway	7.9L/100km	8.8L/100km	8.7L/100km	9.3L/100km

TOWING

	Maximum Towing Capacity (lbs/kg)		Maximum Gross Combined Weight (GCWR)(kg)	
	2WD	AWD	2WD	AWD
2.0L I4 2WD MT	1,000/454	1,929		
2.0L I4 AWD MT	1,000/454	1,999		
3.0L V6 2WD AT	2,000/907	2,452		
3.0L V6 2WD AT with Towing Package	3,500/1,588	3,147		
3.0L V6 AWD AT	2,000/907	2,526		
3.0L V6 AWD AT with Towing Package	3,500/1,588	3,221		

2003 TRIBUTE FEATURES

ENGINEERING FEATURES

	2WD			AWD		
	DX-I4	DX-V6	LX-V6	DX-I4	DX-V6	ES-V6
2.0L I4	S	-	-	-	-	-
3.0L DOHC V6 engine	-	S	S	-	S	S
4-speed electronically controlled automatic transmission with overdrive, high efficiency torque converter and hill-climbing control	-	S	S	-	S	S
4-wheel, 4-sensor, 3-channel Anti-lock Brake System (ABS)	-	-	SP	-	-	SP
Electronic Brake Force Distribution System (EBFD)	-	-	SP	-	-	SP
Front stabilizer bar	S	S	S	S	S	S

EXTERIOR FEATURES

16" styled steel wheels w/ bright finish cap, P215/70R16 BSW all-season	S	S	-	S	S	-
16" 6-spoke alloy wheels, P215/70R16 BSW all-season	AP	AP	-	AP	AP	-
16" 5-spoke alloy wheels, P235/70R16 BSW all-season	-	-	S	-	-	S
Trailer Towing Package	-	-	SP	-	-	SP
Bumpers/painted finish (2-tone appearance)	-	-	S	-	-	S
Wheel arch moldings with cladding- large	-	-	S	-	-	S
Privacy glass: roof rack	AP	AP	S	AP	AP	S
Rear flip-up window	S	S	S	S	S	S
Heated, power adjustable door mirrors	S	S	S	S	S	S
Remote fuel door opener	S	S	S	S	S	S
Front fog lights	-	-	S	-	-	S
Front variable intermittent wipers/washers	S	S	S	S	S	S
2-speed rear wiper & washer	S	S	S	S	S	S
Electric sliding glass moonroof	-	-	-	-	-	S

INTERIOR FEATURES: COMFORT AND CONVENIENCE

AM/FM/CD player w/ 4 speakers and clock	S	S	S	S	S	-
AM/FM 6-disc in-dash CD changer, cassette, clock and premium audio sound system (includes 7 speakers with a 90w amp. super woofer (total output 190 watts))	-	-	SP	-	-	SP
Air conditioning	S	S	S	S	S	S
Power locks and remote keyless entry w/ illumination	S	S	S	S	S	S
Power windows w/ express 1-touch feature	S	S	S	S	S	S
Leather-wrapped steering wheel	-	-	SP	-	-	SP
Cruise control	AP	AP	S	AP	AP	S
Centre dome lamp w/ integrated map lamps	S	S	S	S	S	-
Retractable cargo cover	-	-	S	-	-	S

INTERIOR FEATURES: SEAT & TRIM

	2WD			AWD		
	DX-I4	DX-V6	LX-V6	DX-I4	DX-V6	ES-V6
Front Seats: 6-way power adjustable seat (driver's seat only)	-	-	S	-	-	S
Lumbar support	-	-	S	-	-	S
Seat back map pocket (driver and passenger)	S	S	S	S	S	S
Heated seats	-	-	-	-	-	S
Rear Seat: 60/40 split seat cushions	-	-	S	-	-	S
Reclining seatback	-	-	S	-	-	S
Trim: Leather seating	-	-	-	-	-	S
Front and rear floor mats	S	S	S	S	S	S

INTERIOR FEATURES: INSTRUMENT PANEL AND STORAGE

Resettable trip odometer	S	S	S	S	S	S
Tachometer	S	S	S	S	S	S
Low fuel light	S	S	S	S	S	S
Three power points (cigar lighter, aux. point on IP and cargo area)	S	S	S	S	S	S
Overhead console	AP	AP	S	AP	AP	S
Center console (small type)	S	-	-	S	-	-
Center console (large type) with armrest and storage bin	-	S	S	-	S	S

INTERIOR FEATURES: SAFETY AND SECURITY

Driver and front passenger air bag system (SRS)	S	S	S	S	S	S
Front side air bags	-	-	S	-	-	S
Engine immobilizer theft-deterrent system	S	S	S	S	S	S
Front safety belt pretensioners	S	S	S	S	S	S
Side door impact bar (front & rear)	S	S	S	S	S	S
Child proof rear door locks	S	S	S	S	S	S

S = Standard - = Not Available SP = Sports Package AP = Appearance Package

Appearance Package: Roof rack, cruise control, overhead console with dual storage bins, 16" 6-spoke alloy wheels, privacy glass.

Sports Package: ABS w/ EBFD, ABS warning light, AM/FM 6-disc in-dash CD changer & cassette with 7 speakers, leather-wrapped steering wheel, Towing Package (includes trailer hitch receiver, trailer wiring plug, engine oil cooler, towing capacity increase from 2000 lbs. to 3500 lbs.).

ES Model: Includes LX equipment, Sports Package, leather interior, heated seats and power moonroof.

MAZDA WARRANTY

The basic warranty on the Mazda Tribute covers all parts found to be factory defective for 3 years or 80,000 km whichever comes first. Additional warranties cover powertrain components for a period of 3 years or 80,000 km whichever comes first, body sheet metal perforation for 5 years and unlimited mileage and specific emission control components for up to 8 years or 128,000 km. Exclusions from coverage are limited to maintenance items or adjustments (repairs not requiring parts replacement) on vehicles over 12 months old and repairs due to normal wear and tear. Ask your Mazda Dealer for additional information.

ROADSIDE ASSISTANCE PROGRAM

As part of our commitment to your total satisfaction, 2003 Mazda Tribute owners are automatically enrolled in our Roadside Assistance Program. Roadside Assistance protects your Mazda Tribute for the duration of the 3-year basic limited warranty. Should you require assistance during this period, our service will help to get your vehicle back on the road and minimize any inconvenience. For complete details on this program, see your Mazda Dealer.



For peace of mind motoring, we've created the Mazda Added Protection Plan (MAP). MAP complements your Mazda Limited Warranty for up to 7 years or 160,000 km, and protects you from unexpected repair expenses and the rising cost of repairs. All MAP plans include Personal Budget and Repair Inflation Protection. In addition, all MAP plans include Premium Roadside Assistance, which extends the roadside assistance coverage offered during the new vehicle limited warranty period throughout the MAP term. The Premium Roadside Assistance offers Towing, Battery Boost, Out-of-Fuel Coverage, Tire Service, Lockout Service, Emergency Travel Expense Reimbursement and Travel Planning. Should you ever decide to sell your Mazda vehicle, MAP is transferable to future owners and will enhance the resale value of your vehicle. The Mazda Added Protection Plan is fully backed and administered by Mazda Canada Inc. For more information, please contact your Mazda Dealer.

Product changes and options availability: Following publication of this brochure, certain changes in standard equipment, options, prices and the like, or product delays may have occurred which would not be included in these pages. Your Mazda Dealer is your best source for up-to-date information. Mazda reserves the right to change product specifications at any time without incurring obligations. Options and accessories shown or described in this brochure are available at extra cost and may be offered only in combination with other options or subject to additional ordering requirements or limitations. E. & O. E.