

BMW 3 Series
Cabriolet

325Ci
330Ci



The Ultimate
Driving Experience.™





There can only be one winner when engineers and designers compete to design the perfect car: **you.**

What you really expect from a Cabriolet is **enjoyment...** but why so modest?



The most beautiful navigation system
in the world comes as standard: **the stars.**





Heaven above.
And below.



■ **Xenon headlights** (high and low beam) illuminate the road ahead and to the side with brilliant clarity. These headlights also feature auto-levelling, to adjust for varying passenger and cargo loads.



■ **Front bumper foglights** are cleanly integrated into the front bumper, illuminating the road ahead in bad weather.



■ **Multi-function leather sport steering wheel** offers highly convenient operation, increased safety and an ergonomic design that makes it fit especially well in the driver's hands.



■ **Rain sensor** uses an infrared light to measure the amount of rain. When the wipers are in the "intermittent" mode, the rain sensor automatically adjusts the windshield wiping interval as needed. Also includes automatic headlight function.



□ **Park Distance Control (PDC)** uses ultrasonic sensors in the rear bumpers to help you judge the distance to other cars and unseen objects when parking. The beeping becomes faster as your bumper approaches the object, turning into a constant tone when the distance is less than 30 centimetres.



□ **Fully automatic soft top** provides the ease of one-touch raising and lowering. It is automatically stored in a special compartment under the flush-mounted body colour, magnesium tonneau cover. (Standard on the 330Ci.)



■ **Seat heating** is a welcome feature in cooler weather. With the touch of a button, you can individually select from three heat settings.



■ **Six-speed manual transmission** makes for extremely dynamic driving. Smooth and optimally synchronized, it boasts precise, short shift throws. The more tightly graded transmission and additional sixth gear make the engine even more responsible to your personal style of driving. (Available only on 330Ci.)



■ **Electric front seat adjustment** with memory function for driver's seat and external mirrors; three personalized positions can be saved for each setting of the driver's seat and the external mirrors. (Memory function is optional on the 325Ci.)



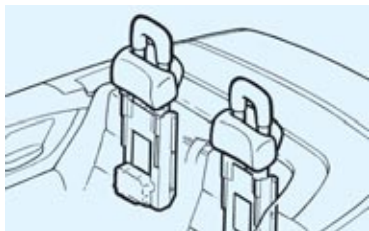
□ **On-board Navigation System** guides you conveniently and directly to your destination. In addition to providing driving instructions via voice, directional arrows or map display, the system will provide destination-specific information. Includes Canada/USA Navigation DVD.



□ **Interior auto-dimming mirror** increases driving safety and comfort for driving at night. Depending on the dazzle intensity, the interior mirror dims accordingly in order to minimize glare. When dazzling has ceased the mirrors return to the original degree of reflection. The programmable garage door opener is included.



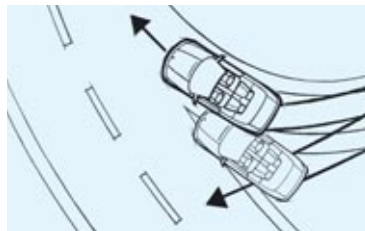
□ **Harman/Kardon Sound System** projects exceptional sound from upgraded speakers and amplification, plus a subwoofer and vehicle-speed-sensitive equalization. (Standard on 330Ci.)



■ **Rollover Protection System** greatly enhances occupant safety with sensors that can detect the possibility of a rollover. When the system is activated, steel bars – discreetly integrated into the rear headrests – deploy automatically.



■ **Rigid body:** Design features to ensure the rigidity of the utilized body include special reinforcement of the A-pillar and the top of the windshield frame, more generous sills and special lateral reinforcements.



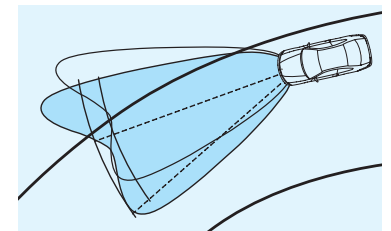
■ **Dynamic Stability Control (DSC)** recognizes the risk of the car skidding very early and stabilizes the car within milliseconds. Also includes Dynamic Brake Control (DBC).



□ **CD Changer** integrates with the BMW In-dash CD Player to allow extra storage of up to 6 discs. Mounted in the trunk, the CD Changer is hidden from view.



□ **Rear side airbags** protect your thorax in a side-on collision; the side airbag significantly reduces the risk of injury at pelvic and chest level.



□ **Adaptive Headlights** allow the xenon headlights to actively adjust themselves to bends in the road and also light up the road ahead, offering significant improvement to road illumination.

Performance and Efficiency	325Ci	330Ci	Sound System	325Ci	330Ci
2.5-litre, 184 hp dual overhead cam (DOHC), 24-valve in-line 6-cylinder engine	■	—	Anti-theft AM/FM stereo/CD sound system with 10 speakers, Radio Data System (RDS), Dolby B/C noise reduction, Auto-Store, pre-wired for CD changer	■	—
3.0-litre, 225 hp dual overhead cam (DOHC), 24-valve in-line 6-cylinder engine	—	■	Harman/Kardon Sound System with 11 upgraded speakers (including subwoofer) and amplification, and vehicle-speed-sensitive equalization	□	■
5-speed manual transmission	■	—	In-dash CD player	■	■
6-speed manual transmission	—	■			
5-speed STEPTRONIC 3-mode (automatic/sport automatic/clutchless manual) transmission with Adaptive Transmission Control (ATC)	□	□			
6-speed SMG®1 (Sequential Manual Gearbox)	—	□			
Double-VANOS steplessly variable valve timing	■	■			
Dual resonance intake system	■	■			
Handling, Ride and Braking					
4-wheel ventilated anti-lock disc brakes with electronic front/rear proportioning	■	■			
Dynamic Stability Control (DSC)	■	■			
Engine-speed-sensitive, variable-assist power steering	■	■			
Front and rear anti-roll (stabilizer) bars	■	■			
Multi-link rear suspension with cast-aluminum upper transverse arms	■	■			
Strut-type front suspension with forged aluminum lower arms, hydraulic cushions	■	■			
Twin-tube gas-pressure shock absorbers	■	■			
Exterior					
Body-colour hardtop with integrated rear window defroster, retractable coat hooks, and individual reading lights front and rear	□	□			
Body-coloured, heated power outside mirrors	■	■			
Fully automatic soft top	□	■			
Fully-lined fabric soft top with glass rear window and electric rear window defroster	■	■			
Halogen free-form foglights	■	■			
Headlight washers	■	■			
Heated windshield-washer jets	■	■			
Metallic paint	□	□			
Tires:					
- 16 x 7.0 Parallel spoke alloy wheels, style 88, 205/55R-16 all-season tires	■	—			
- 17 x 7.0 Parallel spoke alloy wheels, style 98, 205/50R-17 all-season tires	—	■			
White indicator lenses, front and rear	■	■			
Xenon headlights with auto-levelling and high-beam function	■	■			
Instrumentation and Controls					
Check Control vehicle monitor system with pictogram	■	■			
On-board Computer, 4-function	■	■			
Service Interval Indicator with kms-to-service readout	■	■			
Telephone and BMW Assist Preparation, including one year of BMW Assist Safety and Security Services ¹	□	□			
Telephone prewiring	□	□			
Interior Seating and Trim					
3-position driver's seat and exterior mirror memory	□	■			
3-spoke multi-function leather sport steering wheel with fingertip cruise, audio and accessory phone controls	■	■			
3-stage, thermostatically controlled heated front seats	■	■			
8-way power front seats	■	■			
Front centre armrest with storage compartment	■	■			
Interior Trim:					
- Titanium	■	■			
- Myrtle Wood	□	□			
Lumbar support, 4-way adjustable	□	□			
Seatback easy-entry feature with memory	■	■			
Upholstery:					
- Leatherette	■	—			
- Montana Leather	□	■			
- Exclusive Leather, extended	□	□			

Comfort and Convenience	325Ci	330Ci	Safety and Security (continued)	325Ci	330Ci
Alarm and CD Changer pre-wiring	■	■	Front-door-mounted side-impact airbags	■	■
Automatic Climate Control and air recirculation	■	■	Interlocking door anchoring system to help protect against door intrusion in side impacts	■	■
Auto-dimming interior mirror, including garage door opener	□	□	Rear side airbags	□	□
Automatic tilt-down of passenger's side view mirror (when vehicle is shifted into reverse gear)	□	■	Rollover Protection System	■	■
BMW Ambiance Lighting	■	■	Seat-integrated front safety belts with automatic pre-tensioners and force limiters	■	■
Car & Key Memory	■	■	Space-saver spare wheel and tire	■	■
Electric interior trunk release	■	■	Premium Packages		
Expandable cargo space with top raised	■	■	Auto-dimming interior mirror; Electric seats with driver memory; Harman/Kardon Sound System; Lumbar Support	□	—
Front map reading and footwell lights	■	■	Auto-dimming interior mirror; Lumbar Support; Park Distance Control; Ski bag	—	□
Fully finished trunk with reversible mat and drop-down tool kit	■	■	Sport Packages		
Keyless entry with multi-function remote control, including 2-step unlocking and remote trunk release	■	■	Sport seats; Sport suspension; 17 x 8.0 Star spoke alloy wheels, style 44, 225/45R-17 performance tires	□	—
Locking glovebox with rechargeable take-out flashlight	■	■	Sport seats; Sport suspension; M Double spoke alloy wheels, style 68M, 17 x 7.5 front, 225/45 R-17; 17 x 8.5 rear, 245/40 R-18 performance tires	—	□
Park Distance Control (PDC), rear	□	□	Double spoke bolted alloy wheels, style 71, 18 x 8.0 front, 225/40 R-18; 18 x 8.5 rear, 255/35 R-18 performance tires	—	□
Power front and rear windows with "one touch" up/down operation	■	■	M Sport Package¹		
Rain sensor with automatic headlight function	■	■	Anthracite roof liner; Black Aluminum Cube trim; High-gloss Shadow Line; M Aerodynamic package; M Double spoke alloy Wheels, style 135M, 18 x 8.0 front, 255/40 R-18, 18 x 8.5 rear, 255/135 R-18 performance tires	—	□
Ski bag	□	□	M multi-function leather sport steering wheel; Sport seats; Sport suspension upgrade	—	□
Tilt/telescopic steering wheel column	■	■	Silver Aluminum Cube trim	—	□
Safety and Security					
Adaptive Headlights	□	□	Navigation Package¹		
Anti-lock Braking System (ABS), incl. CBC	■	■	BMW On-Board Navigation system; Canada/USA Navigation MAP DVD	□	□
Automatic fuel cut-off, triggered by airbag deployment	■	■	Exclusive Edition		
Automatic-Locking Retractors (ALR) on all passenger safety belts (for installation of child restraint seats)	■	■	Auto-dimming interior mirror; Electric seats with driver memory; Exclusive Leather, extended; Harman/Kardon Sound System; Lumbar support; Myrtle Wood Interior Trim	□	—
Automatic Stability Control + Traction (ASC+T)	■	■	Auto-dimming interior mirror; Exclusive Leather, extended; Lumbar support; Myrtle Wood Interior Trim; Park Distance Control; Ski bag	—	□
Battery Safety Terminal (BST)	■	■			
Central locking system (including glovebox door) with centre console switch (leaves gas filler door unlocked), double-lock feature and 2-step unlocking	■	■			
Coded Drive-away Protection	■	■			
Crash sensor that automatically turns on hazard lights and interior lights and unlocks doors	■	■			
Driver's and passenger's front airbag Supplemental Restraint System (SRS) with "smart" dual-threshold, dual-stage deployment and sensor to help prevent unnecessary passenger's airbag deployment	■	■			
Dynamic Stability Control (DSC)	■	■			

¹ See Retailer for complete details.

Weight		325Ci	330Ci
Unladen weight	kg	1615 (1645)	1640 (1675)
Weight distribution, front/rear			
Manual transmission	%	48.9/51.1	48.7/51.3
Automatic transmission	%	49.2/50.8	49.4/50.6
Max. gross weight man/auto	kg	2015/2045	2040/2075
Max. payload	kg	400	400
Max. axle load, front/rear	kg	945/1155	950/1170
Max. roof load	kg	75	75

Engine		325Ci	330Ci
Litres/type (with Double-VANOS)		2.5/in-line 6	3.0/in-line 6
Displacement	cm ³	2494	2979
Bore/stroke	mm	84.0/75.0	84.0/89.6
Nominal output/rpm	hp	184/6000	225/5900
Max. torque/rpm	lb/ft	175/3500	214/3500
Compression ratio	:1	10.5	10.2
Fuel Grade		Premium Unleaded	Premium Unleaded

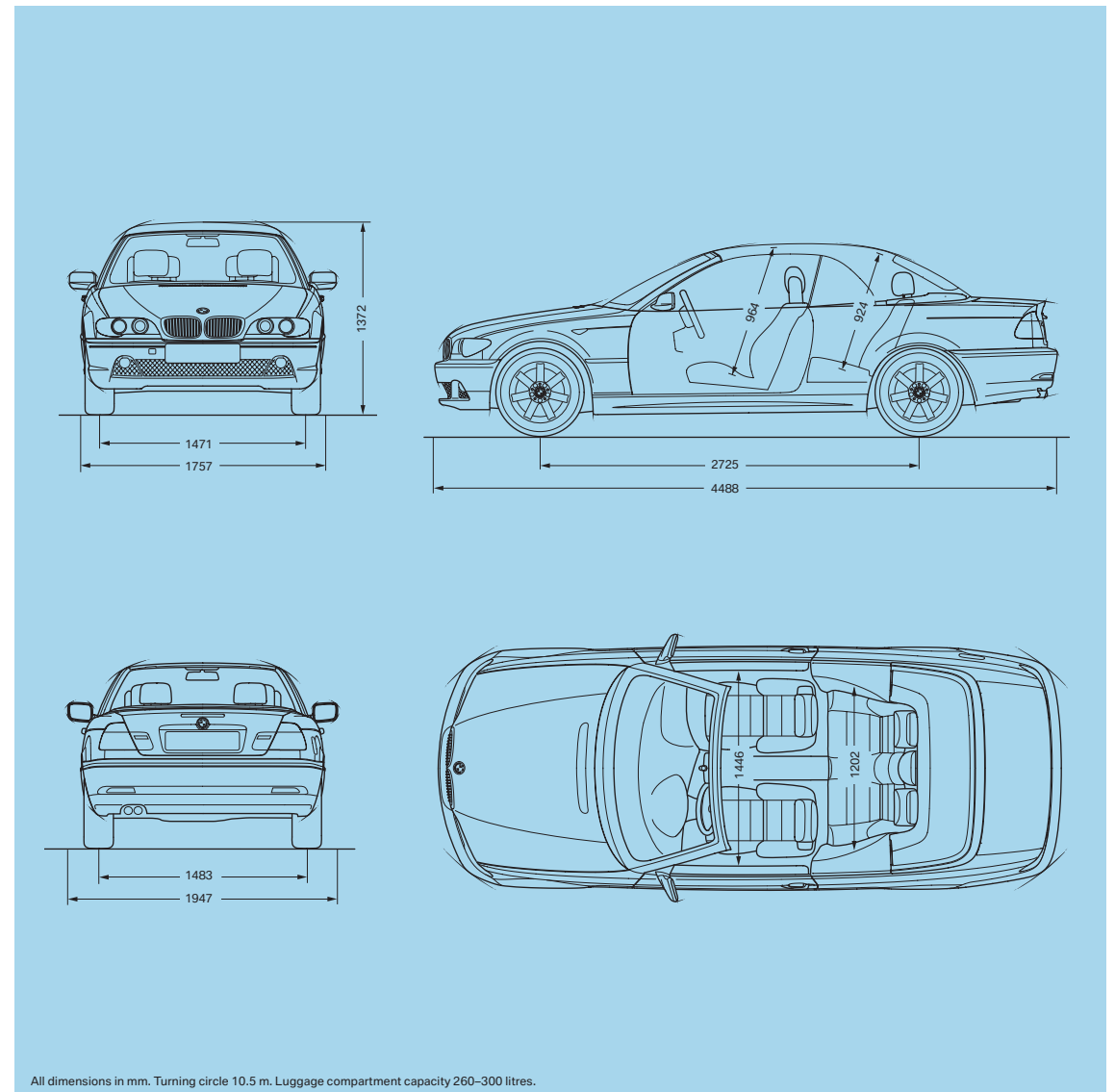
Transmission		325Ci	330Ci
Drive configuration		Rear	Rear
Gear ratios – manual transmission			
I/II	:1	4.23/2.52	4.35/2.50
III/IV	:1	1.66/1.22	1.66/1.23
V/VI/R	:1	1.00/-/4.04	1.00/0.85/4.04
Final drive ratio	:1	3.46	3.07
Gear ratios – automatic transmission			
I/II	:1	3.67/2.00	3.67/2.00
III/IV	:1	1.41/1.00	1.41/1.00
V/R	:1	0.74/4.10	0.74/4.10
Final drive ratio	:1	3.46	3.38

Brakes		325Ci	330Ci
Braking system		4-channel ABS	4-channel ABS
Brake type, front and rear		ventilated disc	ventilated disc
Brake diameter, front/rear	mm	300/294	325/320

Performance		325Ci	330Ci
Drag coefficient	C _d	0.35	0.35
Top speed ¹	km/h	206	206
Acceleration – 0-100 km	sec	8.3 (9.5)	7.5 (7.9)

Wheels		325Ci	330Ci
Tire dimensions (standard)		205/55R-16 All-season	205/50R-17 All-season
Wheel dimensions (standard)		7Jx16	7Jx17
Material		Cast alloy	Cast alloy

Fuel Consumption²		325Ci	330Ci
Manual transmission/SMG			
City/Highway	L/100 km	12.6/8.2	11.9/7.7
Automatic transmission			
City/Highway	L/100 km	12.2/8.3	12.6/8.1



All dimensions in mm. Turning circle 10.5 m. Luggage compartment capacity 260-300 litres.

Figures in () apply to vehicles with automatic transmission.
 1 Top speed limited electronically.
 2 NR Can-estimated figures are for comparison only. Your actual mileage will vary, depending upon speed and trip length actual highway free consumption will most likely be lower.

Exclusive Canadian importer and distributor – BMW Canada Inc., Whitby, Ontario L1N6K9. All illustrations and specifications are based on product information available at the time of printing. BMW reserves the right to revise specifications at any time, without notice. BMW may, subject to legal compliance, determine the Model Year designation of its vehicles. The Model Year designation on any particular model may be longer or shorter than 12 months. Some models may be shown with optional equipment and/or options not available in Canada. Further information can be obtained from your BMW Retailer.

© 2003 BMW Group, Munich, Germany. Not to be reproduced wholly or in part without written permission of BMW Group, Munich, Germany. "BMW", the BMW logo and "The Ultimate Driving Experience" are trademarks of the BMW Group, used under licence by BMW Canada Inc.