

**BMW 3 Series
Sedan**

320i
325i
330i
325xi
330xi



**The Ultimate
Driving Experience.™**



Passion comes in many different forms.
But few are more exciting.



It is hard to describe how power is developed.
But it's easy to understand.



**Intelligent cars don't have an IQ.
What they have is DSC.**



A cockpit should be governed not by fashion but by the needs of the driver.

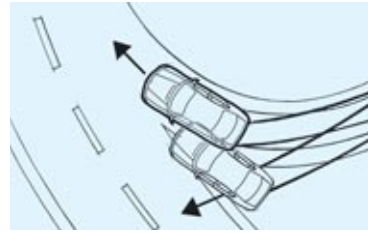




■ **Xenon headlights** (low and high beam) illuminate the road ahead and to the side with brilliant clarity. These headlights also feature auto-levelling to adjust for varying passenger and cargo loads. They also have twice the light intensity of conventional halogen bulbs. (Optional on 320i.)



■ **Heated headlight washers** help keep lights clean of ice, mud, road salt and other coatings for maximum road lighting and enhanced driving safety. (Not available on 320i.)



■ **Dynamic Stability Control (DSC)** recognizes the risk of the car skidding very early and stabilizes the car within milliseconds. Also includes Dynamic Brake Control (DBC).



■ **Rain sensor** uses an infrared light to measure the amount of rain. When the wipers are in the "intermittent" mode, the rain sensor automatically adjusts the windshield wiping interval as needed. Also includes automatic headlamp function.



□ **Park Distance Control (PDC)** uses ultrasonic sensors in the rear bumper to help you judge the distance to other cars and unseen objects when parking. The beeping becomes faster as your bumper approaches the object, turning into a constant tone when the distance is less than 30 centimetres.



□ **Telephone and BMW Assist Preparation** makes the installation of a BMW Mobile Phone system, available through BMW Accessories, as easy and convenient as possible. Also includes one year of BMW Assist Safety and Security Services. Please see Retailer for complete content and details.



■ **Multi-function leather steering wheel** offers highly convenient operation, increased safety and an ergonomical design that makes it fit especially well in the driver's hands. (Optional on 320i.)



■ **Six-speed manual transmission** makes for extremely dynamic driving. Smooth and optimally synchronized, it boasts precise, short shift throws. The more tightly graded transmission and additional sixth gear make the engine even more responsible to your personal style of driving. (Available only on 330i/xi.)



■ **Automatic Climate Control system** includes Automatic Air Recirculation (AAR), which is activated when a sensor detects certain pollutants in the outside air. Inside, cabin air continuously passes through a microfilter that removes pollen, dust and spores. (Not available on 320i.)



□ **On-board Navigation System** guides you conveniently and directly to your destination. In addition to providing driving instructions via voice, directional arrows or map display, the system will provide destination-specific information. Includes Canada/USA Navigation DVD.



□ **Lumbar support** is electronically adjustable and provides the driver and front passenger with a high degree of seating comfort and effective spinal relief. The continuously variable air cushion system helps you adopt an orthopedically correct seating position.



□ **Harman/Kardon Sound System** produces exceptional sound from upgraded speakers and amplification, plus a subwoofer and vehicle-speed-sensitive equalization.



■ **Car memory** allows you to program a full range of individual settings and features on your car, including the Follow-Me-Home function. **Key memory** allows you to set your preferred seat position of the electrically adjustable driver's seat. Furthermore, it is possible to set the automatic climate control to the interior temperature and air distribution to a specific key.



■ **Driver and front passenger airbags** protect your head and upper body in a frontal collision from hitting the steering wheel or instrument panel; depending on the severity of the impact, the airbags are inflated via a two-stage gas generator (impact-depending system); the front passenger airbag comes complete with a seat occupancy detector.



■ **ITS Head Protection System (HPS)** for the driver and front passenger provides effective protection of your head and upper body in a collision from the side.



□ **Electric seats with driver memory** enable the driver and passenger to precisely adjust their seats to individual preferences. The driver's mirror positioning is also retained in the seat memory.



□ **Through-loading system** with 2:1 split folding rear seats, including ski bag.



□ **Rear side airbags** protect your upper body in a side-on collision; the side airbag significantly reduces the risk of injury at pelvic and chest level.

Performance and Efficiency	320i	325i/325xi	330i/330xi
2.2-litre 168 hp dual overhead cam (DOHC), 24-valve in-line 6-cylinder engine	●	–	–
2.5-litre 184 hp dual overhead cam (DOHC), 24-valve in-line 6-cylinder engine	–	●	–
3.0-litre 225 hp dual overhead cam (DOHC), 24-valve in-line 6-cylinder engine	–	–	●
5-speed manual transmission with direct 5th gear	●	●	–
6-speed manual transmission	–	–	●
5-speed STEPTRONIC 3 mode (automatic/sport automatic/clutchless manual automatic transmission with Adaptive Transmission Control (ATC))	○	○	○
6-speed SMG ¹ (Sequential Manual Gearbox)	–	–	○/–
Double-VANOS steplessly variable valve timing	●	●	●
Dual resonance intake system	●	●	●
Handling, Ride and Braking			
4-wheel ventilated anti-lock disc brakes with electronic front/rear proportioning	●	●	●
Brake force display	●	●	●
Dynamic All-Wheel Drive	–	–/●	–/●
Engine-speed-sensitive, variable-assist power steering	●	●	●
Front and rear anti-roll (stabilizer) bars	●	●	●
Hill Descent Control (HDC) enables the car to take steep downhill gradients safely by automatically limiting the speed of the car to approximately 8 km/h.	–	–/●	–/●
Multi-link rear suspension with cast-aluminum upper transverse arms	●	●	●
Sport suspension calibration	○	○/–	●/–
Strut-type front suspension with forged-aluminum lower arms, hydraulic cushions	●	●	●
Twin-tube gas-pressure shock absorbers	●	●	●
Exterior			
Body colour-finish trim on front bumper air inlet	–	–	●
Chrome window surround	–	–	●
Halogen free-form foglights	○	●	●
High-pressure headlight cleaning system	–	●	●
Metallic paint	○	○	○
Speed-sensitive windshield wipers	●	●	●
Tires			
– 16 x 7.0 Steel wheels with covers, 205/55R-16 all-season tires	●	–	–
– 16 x 7.0 Star spoke alloy wheels, style 45, 205/55R-16 all-season tires	○	●	–
– 17 x 7.0 Radial spoke alloy wheels, style 73, 205/50R-17 all-season tires	–	–	●
Xenon headlights with auto-levelling, including foglights	○	●	●
Sound System			
Anti-theft AM/FM stereo sound system with 6 speakers, Radio Data System (RDS) and 3-channel FM diversity antenna system, pre-wired for CD changer	●	●	●
Harman/Kardon sound system with 12 speakers (including 2 subwoofers), upgraded amplification and vehicle-speed-sensitive equalization	–	○	○
In-dash CD player	●	●	●

● Standard
○ Optional
– Not Available

¹ Please see Retailer for complete details.

Interior Seating and Trim	320i	325i/325xi	330i/330xi
3-stage, thermostatically controlled heated front seats	○	○	●
4-spoke leather-wrapped steering wheel	●	●	●
6-way adjustable front seats	●	●	●
10-way adjustable sport seats ¹	○	○	○
Front centre armrest with storage compartment	●	●	●
Front seatback storage nets	–	●	●
Interior Trim			
– Titanium	●	●	●
– Myrtle Wood	○	○	○
Lumbar support, 4-way electronically adjustable	–	○	○
Multi-function steering wheel with fingertip cruise, audio and accessory phone controls	○	●	●
Power front seats, 3-position memory driver's seat and exterior mirror memory (includes automatic tilt-down of passenger's side-view mirror when vehicle is shifted into reverse gear)	○	○	○
Upholstery			
– Leatherette	●	●	●
– Montana Leather	–	○	○
– Cloth Laser/Alcantara Anthracite (only with M-Sport Package)	–	–	○
– Exclusive Leather, extended	–	○	○
Comfort and Convenience			
2-way power glass moonroof with one-touch operation, sliding interior sunshade and wind deflector	○	○	●
Air conditioning, manual, with microfilter	●	–	–
Alarm and CD changer pre-wiring	●	●	●
Automatic Climate Control and air recirculation, including microfilter	–	●	●
Automatic-dimming interior rear view mirror	○	○	○
BMW Ambiance lighting	●	●	●
Electric interior trunk release	–	●	●
Electric sunshade for rear window	–	–	○
Fully finished trunk with drop-down tool kit	●	●	●
Keyless entry with multi-function remote control, including two-step unlocking and remote trunk release	●	●	●
Locking glovebox with rechargeable take-out flashlight	●	●	●
Park Distance Control (PDC), rear	–	○	○
Power front and rear windows with "one touch" feature up/down operation	●	●	●
Rain sensor with automatic headlight function	●	●	●
Split fold-down rear seats with centre armrest (includes ski bag)	○	○	○
Tilt/telescopic steering wheel	●	●	●
Vehicle & Key Memory	●	●	●

Instrumentation and Controls	320i	325i/325xi	330i/330xi
Aluminum-finish ringed gauges	-	-	●
Check Control vehicle monitor system with pictogram	●	●	●
On-board computer, 4-function	○	●	●
Service Interval Indicator with kms-to-service readout	●	●	●
Telephone and BMW Assist Preparation, includes one year of BMW Assist Safety and Security Services	○	○	○
Safety and Security			
Anti-lock Braking System (ABS) incl. Cornering Brake Control (CBC)	●	●	●
Automatic fuel cut-off, triggered by airbag deployment	●	●	●
Automatic-Locking Retractors (ALR) on all passenger safety belts (for installation of child restraint seats)	●	●	●
Automatic Stability Control + Traction (ASC+T)	●	●	●
Battery Safety Terminal (BST)	●	●	●
Central locking system with centre console switch (leaves gas filler door unlocked), double-lock feature and 2-step unlocking	●	●	●
Coded Driveaway Protection	●	●	●
Crash sensor that automatically turns on hazard lights and interior lights and unlocks doors	●	●	●
Driver's and passenger's front airbag Supplemental Restraint System (SRS) with dual-stage, dual-threshold deployment and sensor to help prevent unnecessary passenger's airbag deployment	●	●	●
Dynamic Stability Control (DSC) incl. DBC	●	●	●
Front-door-mounted side-impact airbags	●	●	●
Full-use spare alloy wheel and tire	○	●	●
Head Protection System (HPS)	●	●	●
Height-adjustable front safety belts with automatic tensioners and force limiters	●	●	●
Interlocking door anchoring system to help protect against door intrusion in side impacts	●	●	●
Rear centre 3-point safety belt and headrest	●	●	●

● Standard
○ Optional
- Not Available

¹ See Retailer for complete details.

Premium Packages	320i	325i/325xi	330i/330xi
Glass sunroof; Heated front seats; On-board computer	○	-	-
Electric seats with driver memory; Glass sunroof; Harman/Kardon sound system; Heated front seats	-	○	-
Electric seats with driver memory; Harman/Kardon sound system; Interior auto-dimming mirror; Lumbar support; Montana Leather; Through-load with ski bag	-	-	○
Exclusive Edition			
Anthracite roof liner; Electric seats with driver memory; Exclusive Leather, extended; Glass sunroof; Heated front seats; Myrtle Wood Interior Trim	-	○	-
Anthracite roof liner; Auto-dimming interior mirror; Electric seats with driver memory; Exclusive Leather, extended; Harman/Kardon Sound System; Lumbar support; Myrtle Wood Interior Trim	-	-	○
Sport Packages			
3-spoke leather sport steering wheel; 16 x 7.0 V-spoke alloy wheels, style 136, 225/50R-16 performance tires; Full-size spare tire; Sport seats; Sport suspension	○	-	-
3-spoke multi-function leather sport steering wheel; 17 x 7.5 front, 17 x 8.5 rear M Double spoke alloy wheels, style 68M, 225/45R-17 front, 245/40R-17 rear performance tires; Full-size spare tire; Sport seats; Sport suspension	-	○/-	-
3-spoke multi-function leather sport steering wheel; 17 x 8.0 M Parallel spoke alloy wheels, style 68M, 225/45R-17 performance tires; Sport seats	-	-	○/-
M Sport Package¹			
Anthracite roof liner; Black Aluminum Cube trim; High-gloss Shadow Line; M Aerodynamic Package; M multi-function leather sport steering wheel; Sport seats; Sport suspension; M Double spoke alloy wheels, style 135M, 18 x 8.0 front, 225/40R-18, 18 x 8.5 rear, 255/35R-18 performance tires	-	-	○/-
M Performance Edition¹			
Anthracite roof liner; Black Aluminum Cube trim; High-gloss Shadow Line; M Aerodynamic Package; M multi-function leather sport steering wheel; Sport seats; M Double spoke alloy wheels, style 135M, 18 x 8.0 front, 225/40 R-18, 18 x 8.5 rear, 255/35 R-18 performance tires; 235hp @ 5,900rpm; 222 lb-ft @ 3,500; Revised engine management; Shorter rear axle ratio; Modified camshaft; 0-100km/h in 6.4 seconds	-	-	○
Silver Aluminum Cube trim	-	-	○
All-Wheel Drive Sport Package			
3-spoke leather sport steering wheel; 17 x 7.0 Star spoke alloy wheels, style 137, 205/50R-17 all-season tires; Sport seats	-	-/○	-
3-spoke leather sport steering wheel; 17 x 8.0 Star spoke alloy wheels, style 96, 205/45R-17 all-season run-flat tires (incl. space-saver spare tire); Sport seats; Tire Pressure Warning	-	-	-/○
Communication Package			
Multi-function steering wheel; Telephone and BMW Assist Preparation, includes one year of BMW Assist Safety and Security Services	○	-	-
Navigation Package			
BMW On-board Navigation System; Canada/USA Navigation DVD	-	○	○

Weight		320i	325i/325xi	330i/330xi
Unladen	kg	1440 (1475)	1470 (1505)	1505 (1530)
Weight distribution, front/rear				
Manual transmission	%	52.7/47.3	50.2/49.8	50.2/49.8
Automatic transmission	%	53.1/46.9	50.7/49.3	50.7/49.3
Max. gross weight, man/auto	kg	1905/1940	1940/1980 (2050/2080)	1970/2005 (2060/2085)
Max. payload	kg	480	480	480
Max. axle load, front/rear	kg	895/1070	900/1100 (990/1120)	910/1120 (980/1130)
Max. roof load	kg	75	75	75
Engine				
Litre/type (with Double-VANOS)		2.2/DOHC in-line 6, 24v	2.5/DOHC in-line 6, 24v	3.0/DOHC in-line 6, 24v
Displacement	cm ³	2171	2494	2979
Bore/stroke	mm	80.0/72.0	84.0 x 75.0	84.0 x 89.6
Nominal output/rpm	hp	168/6250	184/6000	225/5900
Max torque/rpm	lb-ft	155/3500	175/3500	214/3500
Compression ratio	:1	10.8	10.5	10.2
Fuel grade		Premium unleaded	Premium unleaded	Premium unleaded
Transmission				
Drive configuration		Rear	Rear/All-Wheel	Rear/All-Wheel
Manual gear ratios				
I/II	:1	4.23/2.52	4.23/2.52 / 4.21/2.49	4.35/2.50 / 4.35/2.50
III/IV	:1	1.66/1.22	1.66/1.22 / 1.66/1.24	1.66/1.23 / 1.66/1.23
V/VI/R	:1	1.00/-/4.04	1.00/-/4.04 / 1.00/-/3.85	1.00/0.85/4.04 / 1.00/1.00/4.04
Final drive ratio	:1	3.38	3.15 / 3.23	2.93 / 3.07
Automatic gear ratios				
I/II	:1	3.67/2.00	3.67/2.00 / 3.45/2.21	3.67/2.00 / 3.42/2.22
III/IV	:1	1.41/1.00	1.41/1.00 / 1.59/1.00	1.41/1.00 / 1.60/1.00
V/R	:1	0.74/4.10	0.74/4.10 / 0.76/3.17	0.74/4.10 / 0.75/3.03
Final drive ratio	:1	3.91	3.46 / 3.46	3.38 / 3.46
Brakes				
Braking system		4-channel ABS	4-channel ABS	4-channel ABS
Brake type, front and rear		ventilated disc	ventilated disc	ventilated disc
Brake diameter, front/rear	mm	286/276	300/294	325/320
Performance				
Drag coefficient	C _d	0.31	0.31	0.31
Top speed ¹	km/h	206	206	206
Acceleration 0–100 km/h ²	sec	8.7 (9.8)	7.6 (8.6)	6.8 (7.4)

Wheels		320i	325i/325xi	330i/330xi
Tire dimensions	standard	205/55R-16 all-season	205/55R-16 all-season	205/50R-17 all-season
Wheel dimensions	standard	7J x 16	7J x 16	7J x 17
Material		Steel wheel with cover	Cast alloy	Cast alloy
Fuel Consumption³				
Manual transmission				
City	L/100 km/h	11.3	11.6/12.1	11.3/11.9
Highway	L/100 km/h	7.2	7.4/7.7	7.3/7.9
Automatic transmission				
City	L/100 km/h	11.6	11.8/12.3	11.6/13.0
Highway	L/100 km/h	7.4	8.0/8.4	7.7/8.6
Tank capacity, approx	L	63	63	63

Illustrations above: all dimensions in mm. Figures in () apply to 325i, if different. Please see your BMW Retailer for 325xi and 330xi dimensions. Luggage compartment capacity 440 litres. Turning circle 10.5 m on 320i, 325i and 330i; 10.9 m on 325xi and 330 xi.

- 1 Top speed limited electronically.
- 2 BMW AG test results. Actual acceleration results may vary, depending on specification of vehicle, road and environmental conditions, testing procedures and driving style. These results should be used for comparison only, and verification should not be attempted on public roads. **BMW urges you to obey all posted speed laws and always wear safety belts.**
- 3 NR Can-estimated figures are for comparison purposes only. Your actual mileage will vary, depending on speed, driving habits, trip length and driving conditions; actual mileage will most likely be lower.

Exclusive Canadian importer and distributor – BMW Canada Inc., Whitby, Ontario L1N 6K9. All illustrations and specifications are based on product information available at the time of printing. BMW reserves the right to revise specifications at any time, without notice. BMW may, subject to legal compliance, determine the Model/Year designation of its vehicles. The Model/Year designation on any particular model may be longer or shorter than 12 months. Some models may be shown with optional equipment and/or options not available in Canada. Further information can be obtained from your BMW Retailer. Figures in () apply to vehicles with automatic transmission.

© 2003 BMW Group, Munich, Germany. Not to be reproduced wholly or in part without written permission of BMW Group, Munich, Germany; "BMW", the BMW logo and "The Ultimate Driving Experience" are trademarks of the BMW Group, used under licence by BMW Canada Inc.