

BMW X5



X5 3.0i
X5 4.4i

The Ultimate
Driving Experience™





To find a new world, you must constantly redefine.



325 CAE

The ongoing process of becoming better.

The best link between town and country is a good engine.



What you see here you don't really need to see.





■ **Xenon headlights (low and high beam)** with luminous rings, including dynamic headlight range control for much better illumination of the road ahead in bad weather or poor visibility. These headlights also feature auto-levelling, to adjust for varying passenger and cargo loads.



■ **Rain sensor** uses an infrared light to measure the amount of rain. When the wipers are in the "intermittent" mode, the rain sensor automatically adjusts the windshield wiping interval as required. Includes automatic headlight function.



□ **Park Distance Control (PDC)** uses ultrasonic sensors in the bumpers to help you judge the distance to other cars and unseen objects when parking. The beeping becomes faster as your bumper approaches the object, turning into a constant tone when the distance is less than 30 centimetres.



■ **BMW Business CD** offers AM/FM radio with easy-to-use preset buttons. Listen to your favourite radio stations or insert a CD into the single CD player.



■ **Automatic Climate Control system** includes Automatic Air Recirculation (AAR), which is activated when a sensor detects certain pollutants in the outside air. Inside, cabin air continuously passes through a microfilter that removes pollen, dust and spores.



□ **Six-speed manual gearbox** makes for extremely dynamic driving. Smooth and optimally synchronized, it boasts precise, short shift throws. The more tightly graded transmission and additional sixth gear make the engine even more responsive to your personal style of driving. (Available on the X5 3.0i.)



□ **Running boards** made of brushed and eloxyplated aluminum give the X5 a particularly sport touch.



□ **Privacy glass** on the rear side windows (behind the B-pillar) and rear window; reduces the sun's dazzle and ensures a pleasant temperature inside the car.



□ **BMW light-alloy wheels:** 8.5J x 18" Y-spoke alloy wheels, style 131; 255/55R-18 all-season tires. (Available only on X5 3.0i.)



■ **Six-speed automatic transmission with STEPTRONIC.** Gears are shifted quickly and smoothly for optimum performance on the road. (Standard on the 4.4i.) STEPTRONIC allows you to use the automatic transmission like a manual gearbox without having to press a clutch pedal. (On the X5 3.0i a 5-speed automatic transmission is available.)



□ **Sport seats** for the driver and front passenger (shown here in Dakota Leather), including pockets, electrical adjustment for the driver and front passenger seats, memory function for the driver's seat; optimum side support is provided by side bolsters, individual adjustment of seat height, backrest and seat angle, and thigh support.



□ **Comfort seats** for the driver and front passenger, including pockets, electrical adjustment of the headrest and seat position for the driver and front passenger, memory function on the driver's seat, exterior mirrors and steering column; armrest at the front. (Available on the X5 4.4i.)



□ **BMW light-alloy wheels:** 9.0J x 19" front, 9.0J x 19" rear Star spoke alloy wheels style 132; 255/50R-19 front, 285/45R-19 rear performance tires. (Available only on X5 4.4i.)



□ **Multi-function leather sport steering wheel** offers highly convenient operation, increased safety and an ergonomic design that makes it fit especially well in the driver's hands.



□ **On-board Navigation System** guides you conveniently and directly to your destination. In addition to providing driving instructions via voice, directional arrows or map display, the system will provide destination-specific information.



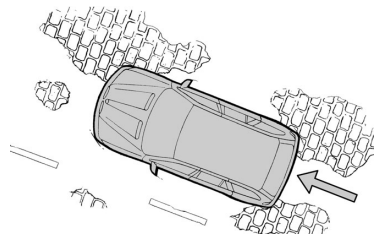
□ **Heated rear seats** are a welcome feature in cooler weather. With the touch of a button, you can select from two heat settings.



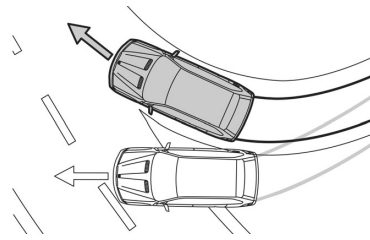
■ **Split-folding seats** allow you to accommodate many different types of luggage.



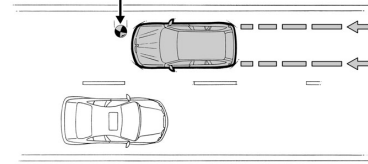
□ **Glass sunroof** allows natural light to enter the cabin. For convenience, it has a one-touch open and close feature with anti-trapping, as well as a tilt function for ventilating the inside of your car on hot summer days. (Standard on the X5 4.4i.)



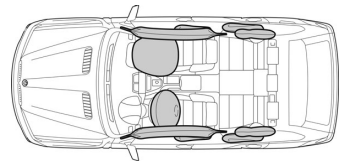
■ **Automatic Differential Brake (ADB-X)** proves the same function as differential locks by intervening on demand on individual wheels. A wheel about to spin is automatically slowed down by ADB-X until it regains its grip and conveys drive forces. With DSC activated, ADB-X is supplemented by engine output control; with DSC switched off the function is set to maximum drive and traction.



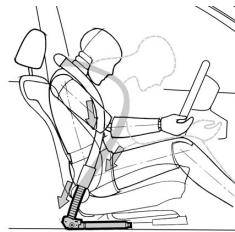
■ **Dynamic Stability Control (DSC)**, comprising ADB-X, CBC, DBC, and HDC. DSC detects the risk of swerving right from the start, stabilizing the car within fractions of a second. The DSC suspension control system ensures greater driving stability above all in bends.



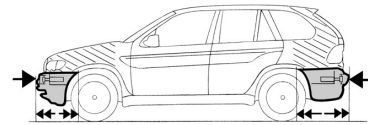
■ **Dynamic Brake Control (DBC)** provides brake assistance, building up maximum brake pressure in an emergency even if the driver fails to properly press down the brake pedal, significantly shortening your BMW's stopping distance in the process.



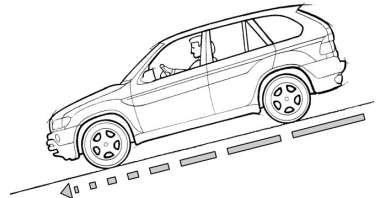
The **airbags** and all further safety components are perfectly coordinated in a BMW, so that in a collision only the airbag actually required is activated. Such activation of the airbag varies in intensity, depending on the impact. Up to 10 airbags offer protection precisely where required: driver and front passenger airbags, head airbags front and rear, as well as side airbags at the front and, as an option, at the rear.



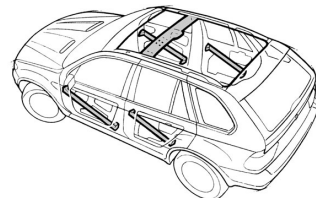
■ **BMW restraint system** for the driver and front passenger, combining the three-point seat belt (with manual belt height adjustment on the B-pillar), belt latch tensioner, belt force governor and anti-submarining ramp in the seat, for optimum restraint in a collision.



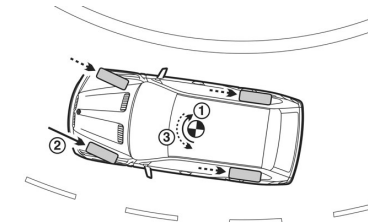
■ **Bumpers with regenerating aluminum impact absorbers** take up impacts, without damage, at speeds up to 4 km/h. Special deformation zones at the front and rear absorb forces at up to 15 km/h without any damage to the body.



■ **Hill Descent Control (HDC)** enables your BMW to take even the steepest downhill gradients slowly and surely all by itself, just slightly faster than walking pace. As an option the driver may also control HDC via buttons in the multi-function steering wheel.



■ **Door reinforcements** ensure maximum occupant protection in a side-on collision. This safety is provided by diagonal reinforcement profiles in the door, ensuring supreme door stiffness.



■ The sports driver knows that when you apply the brakes, the loads acting on the rear wheels are reduced, possibly making the vehicle swerve round in a bend. (1) **Cornering Brake Control (CBC)** counteracts this effect by asymmetrically adjusting brake pressure (2) in order to generate a stabilizing counterforce (3) even before the Anti-Lock Braking System (ABS) cuts in.

Safety	3.0i	4.4i
Adaptive brake lights	■	■
Airbags:		
– Driver and front passenger airbags with ID (Impact-Depending) function, seat occupancy detector on front passenger's seat	■	■
– Head airbags for the driver and passenger front and rear	■	■
– Side airbags at the front for driver and passenger	■	■
– Side airbags for rear passengers	□	□
Alarm system with remote control	■	■
Anti-lock Brake System (ABS)	■	■
Automatic Differential Brake (ADB-X)	■	■
Battery Safety Terminal (BST)	■	■
Battery light, third, in the upper rear window frame	■	■
Brakes:		
– Disc brakes at the front, inner vented	■	■
– Disc brakes at the rear	■	■
Central locking with electronic immobilizer, crash sensor; fuel tank filler cap integrated in central locking	■	■
Centre lock switch	■	■
Child seat fastening, ISOFIX	■	■
Cornering Brake Control (CBC)	■	■
Dynamic Brake Control (DBC)	■	■
Dynamic Stability Control (DSC - X)	■	■
Foglights	■	■
Fuel pump switching off automatically in the event of a collision	■	■
High-pressure headlight cleaning system	□	□
Hill Descent Control (HDC)	■	■
Park Distance Control (PDC)	□	□
Power steering with crash-optimized safety steering column	■	■
Rain sensor with automatic headlights	■	■
Safety bodyshell:		
– Deformation zones front and rear, door reinforcements made of aluminum, bumpers regenerating to their original shape in collisions at up to 4 km/h	■	■
Seatbelts:		
– Ergonomic belt system at the rear with three-point belts on all seats	■	■
– Inertia-reel seatbelts at the front with pyrotechnical belt latch tensioner and belt force governor	■	■
– Manual seatbelt height adjustment on the B-pillar	■	■
Side impact protection door reinforcements	■	■
Trailer Stability Control in conjunction with trailer towbar	■	■
Xenon headlights , low and high beam with luminous rings, including dynamic headlight range control	■	■

Engines	3.0i	4.4i
3.0-litre, 225 hp 24-valve in-line 6-cylinder engine	■	–
4.4-litre, 315 hp, 32-valve V8 engine	–	■
Comfort start	–	■
Cylinder-specific knock control	■	■
Digital Motor Electronics (DME)	■	■
Drive-by-wire throttle system, fully electronic	■	■
Double VANOS "steplessly" variable valve timing	■	■
Dual resonance intake system	■	–
Electronically controlled engine cooling	■	■
Engine compartment with full encapsulation	■	■
Engine mounts with controlled hardness	■	■
Light-alloy cylinder head	■	■
On-board diagnosis	■	■
Three-way catalytic converter, heated oxygen sensor, activated carbon filter, fully controlled tank purge	■	■
Valvetronic	–	■
Transmission/Suspension		
5-speed automatic transmission with Adaptive Transmission Management and STEPTRONIC	■	–
6-speed automatic transmission with Adaptive Transmission Management and STEPTRONIC	–	■
6-speed manual transmission	□	–
Anti-roll stabilizer bars, front and rear	■	■
Double-joint spring strut front axle with brake dive compensation and thrust bar	■	■
Electronic Brakeforce Distribution (EBD)	■	■
Full air suspension with Active Ride Height offroad, standard and entry mode	□	□
Integral rear axle with anti-squat and anti-dive	■	■
Self-levelling air suspension, rear	□	■
Sport suspension calibration	□	□
Two-mass flywheel (only with manual transmission)	■	–
xDrive, all-wheel-drive system with variable power division	■	■
Interior		
Armrest at the front, folding up and down, sliding forwards and backwards	■	■
Armrests on the doors, with integral grab handles	■	■
Automatic air conditioning (including Automatic Air Recirculation)	■	■
BMW Ambiance Lighting	■	■
Car/Key Memory	■	■
Centre armrest at the rear	■	■
Complete preparation for mobile phone (Motorola V50)	□	□
Cupholders, front and rear	■	■

Interior	3.0i	4.4i
Digital clock	■	■
Follow-Me-Home function	■	■
Glass sunroof, electrical	□	■
Glove compartment, illuminated and lockable	■	■
Headrests at the front, adjustable for height and angle	■	■
Headrests at the rear (3), manually adjustable for height	■	■
Indirect illumination of centre console front and rear	■	■
Interior lights with automatic function, soft on/off	■	■
Interior mirror with automatic anti-dazzle function	□	□
Interior Trim:		
– Beige high-gloss	■	–
– Black high-gloss	■	–
– Dark Poplar wood trim	□	■
– Light Poplar wood trim	□	□
– Smoke Grey Poplar wood trim	□	□
Latching points (four) and cargo holders (two) in the luggage compartment	■	■
LIGHTS ON? warning	■	■
Luggage compartment cover including partition net	■	■
Luggage compartment lights (two) in upper section of rear lid	■	■
Luggage compartment with full textile lining	■	■
Lumbar supports for driver and front passenger, electrically adjustable	□	□
Navigation System, Professional, DVD navigation with 16:9 on-board monitor, BMW Professional radio with cassette player, no TV function	□	□
On-board computer with Check/Control including alphanumeric display, additional functions	□	■
On-board computer with Check/Control including pictogram display	■	■
Outside temperature display	■	■
Power sockets (12 V), two, in luggage compartment	■	■
Radio/Audio:		
HiFi Sound System, 10 speakers	■	■
Audiophile Sound System with Digital Sound Processing (DSP), 14 speakers	■	■
– BMW Business CD/Radio	■	■
– CD Changer, pre-wiring	■	■
– CD Changer, 6-disc	□	□
Roof liner, Anthracite	□	□
Seat pockets on front seats	■	■
Seats/seat comfort:		
– Front seats, 10-way power adjustable for driver	■	–
– Front seats, 10-way power adjustable for driver and passenger, including driver memory	–	■
– Comfort seats, 12-way power adjustable	–	□
– Rear-seat backrest with asymmetric (2:1) subdivision	■	■

Interior	3.0i	4.4i
- Heated seats for driver and front passenger	■	■
- Heated seats on the rear seats	□	□
- Sport seats for driver and front passenger, 10-way power adjustable	□	□
Service Interval Indicator	■	■
Ski-bag	□	□
Smoker package	■	■
Spare wheel beneath floor in luggage compartment	■	■
Steering wheel column electrically adjustable for reach and height (included in electrical seat adjustment)	■	■
Steering wheel, heated	■	■
Steering wheels:		
- Leather steering wheel with airbag and multi-function buttons	■	■
- Sport leather steering wheel with airbag and multi-function buttons	□	□
Storage facilities in the roof console, in the doors front and rear, storage boxes rear left and right; extra storage space on no-smoker model	■	■
Telephones:		
- Telephone pre-wiring	■	■
- Telephone and BMW Assist Preparation including one year of BMW Assist Safety and Security Services	□	□
Twin-tone horn	■	■
Universal garage door opener , pre-wiring	■	■
Upholstery:		
- Leatherette	■	-
- Dakota Leather	□	■
Vanity mirrors , illuminated, with slide cover for driver and front passenger	■	■
Window lifts front and rear, electrical, with fingertip control, open/close function, trap release, comfort close on all doors	■	■

Exterior	3.0i	4.4i
All-round anti-corrosion treatment with partial hot galvanizing, phosphate coating and cathodic dip bath, hollow cavity preservation, underfloor protection	■	■
Direction indicators, white	■	■
Aluminum running boards	□	□
Engine compartment lid and rear lid supported by gas pressure springs	■	■
Heat-insulating glass all-round , green, with laminated windscreen	■	■
Illumination of entry area integrated in rear-view mirrors	■	■
Metallic paintwork	■	■
Keyless entry with multi-function remote control	■	■
Rear lid, two-piece:		
- Rear lid section folding down to loading sill level	■	■
- Upper section opening up separately at the touch of a button (electrical control buttons outside and in the interior), including Soft Close automatic system	■	■
Rearview mirrors, electrically adjustable , finished in body colour, blue-tinted, heated, in aspheric design	■	■
Rearview mirrors with automatic anti-dazzle function , including fold-in function, heated	□	□
Rear window wiper	■	■
Roof rails	■	■
Screenwasher nozzles, heated	■	■
Towbar with removable ball socket (including Trailer Stability Control)	□	□
Wheel arches at the front with plastic inserts	■	■
Wheels:		
- 17 x 7.5 V-spoke alloy wheels, style 130, 235/65R-17 all-season tires	■	-
- 18 x 8.5 Y-spoke alloy wheels, style 131, 255/55R-18 all-season tires	□	-
- 18 x 18.5 Star spoke alloy wheels, style 153, 255/55R-18 all-season tires	-	■
- 19 x 9.0 front, 19 x 10.0 rear Star spoke alloy wheels, style 132, 255/50R-19 front, 285/45R-19 rear performance tires	-	□
Windshield with green stripe	□	□
Maintenance		
Scheduled Maintenance for 3 years/60,000 km on both models	■	■
Premium Package		
Auto-dimming mirrors; Dakota Leather; Dark Poplar wood trim; Electric seats with driver memory	□	-
Audiophile Sound System with Digital Sound Processing; Auto-dimming mirrors; Comfort seats, front; Heated seats, rear	-	□
Sport Package		
3-spoke multi-function leather sport steering wheel; 18" Y-spoke alloy wheels, style 131; Anthracite roof liner; Door unlock lever and metal grille in front apron in Titanium; Exhaust baffles; Exterior trim in body colour; Window framing in high-gloss Shadow Line; Sport suspension with self-levelling rear	□	-
3-spoke multi-function leather sport steering wheel; 19" star-spoke alloy wheels, style 132; Anthracite roof liner; Door unlock lever and metal grille in front apron in Titanium; Exhaust baffles; Window framing in high-gloss Shadow Line; Sport suspension with self-levelling rear	-	□
Activity Package		
Aluminum running boards; Headlight cleaning system; Park Distance Control; Privacy glass; Ski bag	□	□
Navigation Package		
BMW On-board Navigation System; Canada/USA Navigation DVD	□	□

Weight		3.0i¹	4.4i²
Unladen ³	kg	2130 [2110]	2235
Max. permissible	kg	2725 [2725]	2725
Permitted load ³	kg	595 [615]	490
Permitted axle load, front/rear	kg	1230/1500	1265/1500
Permitted roof load	kg	100	100
Permitted trailer load, unbraked	kg	750 [750]	750
Permitted trailer load, braked	kg	2700 [2700]	2700

Engine		3.0i	4.4i
Cylinders/valves		6/24	32
Capacity	cm ³	2979	4398
Bore/stroke	mm	84.0 x 89.6	92.0 x 82.7
Max. output	hp/rpm	225/5900	315/6100
Max. torque	lb-ft/rpm	214/3500	324/3600
Compression ratio	:1	10.2	10.0

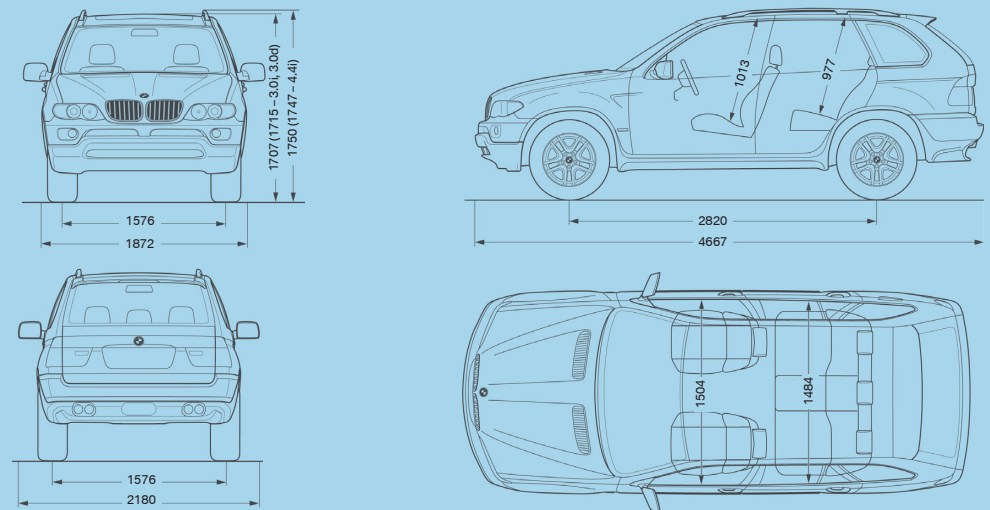
Transmission		3.0i	4.4i
Automatic transmission ratios	III/III :1	5.14/2.83/1.79 [3.42/2.22/1.60]	4.17/2.34/1.52
	IV/V/VI/R :1	1.26/1.00/0.83/4.64 [1.00/0.75-3.03]	1.14/0.87/0.69/3.40
Final drive ratio	:1	4.10 [4.10]	4.10

Performance		3.0i	4.4i
Top speed	km/h	210	210
Acceleration 0-100 km/h	s	8.3 [8.8]	7.0

Fuel Consumption⁵		3.0i	4.4i
City	L/100 km	TBA	TBA
Highway	L/100 km	TBA	TBA
Combined	L/100 km	TBA	TBA
Tank capacity, approx	L	93	93

Wheels		3.0i	4.4i
Tire dimensions		235/65 R-17	255/55
Wheel dimensions		7.5 J x 17	8.5 J x 18
Material		Light alloy	Light alloy

Electrical System		3.0i	4.4i
Battery capacity	Ah	80	90
Alternator output	AW	140/1960	170/2380



All dimensions of drawings in millimetres. Luggage compartment capacity 465 to 1550 litres

¹ Figures in [] apply to vehicles with manual transmission.
² Available with automatic transmission only.
³ Unladen weight applies to vehicles in standard trim. Optional equipment may increase this figure.
⁴ Applies only to sports and car trailers.
⁵ NR Can - estimated figures are for comparison purposes only. Your actual mileage will vary, depending on speed, driving habits, trip length and driving conditions; actual mileage will most likely be lower.

© 2003 BMW AG, Munich, Germany. Not to be reproduced wholly or in part without the written permission of BMW AG, Munich. © BMW Canada Inc. "BMW", the BMW logo and "The Ultimate Driving Experience" are trademarks of BMW AG, used under licence by BMW Canada Inc.