

2004 Mercedes-Benz **C-Class**
C 230 Kompressor C 240 C 320 C 32 AMG



Mercedes-Benz

Exceptional choice, outstanding value and a fun-to-drive attitude give the C-Class unmatched appeal. Sport Coupe, Sport Sedan, Sedan or Wagon, supercharged four or V-6 power, every C-Class delivers the style, performance, premium equipment and advanced safety systems that set a Mercedes-Benz apart from all others. And even with standard features like dual-zone climate control, eight air bags and our Electronic Stability Program, these remarkable C-Class offerings are so compellingly priced that they create new definitions for driving excitement and affordable luxury.

A performance-tuned suspension and distinctive interior appointments give our C230 Kompressor and C320 Sport Coupes and Sport Sedans dynamic style to match their enthusiastic spirit. Showcasing a more sumptuous side of the C-Class, the confident Sedans and multifaceted Wagons offer the rich feel of hand-polished wood and the year-round confidence of our C240 4MATIC™ and C320 4MATIC all-wheel-drive models. The C-Class transmission offerings include – depending on model – a 6-speed manual and a driver-adaptive 5-speed automatic.¹ And for those who want a more aggressive edge, there's the C32 AMG Sport Sedan, fortified with a 349-hp supercharged V-6. The 2004 C-Class: so many ways to play it smart.

I want to



drive

incredible value, every day

with supercharged spirit

style with substance

reassured and protected by eight air bags

a Mercedes made especially for me



Shown above and on cover: C 320 Sport Coupe with optional Panorama roof and premium leather upholstery. C 240 *Elegance* Wagon with optional sunroof. C 320 Sport Sedan with optional sunroof and Bi-Xenon headlamps with washers.

Intelligent

value for enlightened buyers

contours that trim the wind to a whisper

choice of responsive, efficient engines

sophistication in a driver's car

safety system with eight protective air bags

C 240 *Elegance* Sedan.

Exceptional choice with premium panache: Defining character traits of the C-Class Sedans. The selection starts with the superb value of the C 230 Kompressor *Classic* Sedan, with its potent 189-hp 1.8-litre supercharged four. If V-6 power is more your style, consider the lively 168-hp 2.6-litre C 240 *Classic* and *Elegance* Sedans, or perhaps the C 320 with its even more vibrant 215-hp 3.2-litre V-6. Take charge of changing gears with the standard 6-speed manual transmission, or let the optional driver-adaptive 5-speed automatic

transmission match its style to yours, while still offering you the manual-style control of Touch Shift.¹ Experience the comfort, precision and poise of our 4-wheel multilink suspension with ESP stability control.² And C 240 and C 320 4MATIC™ all-wheel-drive models bring an added measure of surefooted handling confidence. These tantalizing tourers even anticipate the unexpected, thanks to advanced safety features like emergency-sensing Brake Assist that can potentially shorten stopping distances,³ and eight air bags offering 10-way protection. Designed to delight, the C-Class Sedans can make your good life just a bit better.

C 230 Kompressor *Classic*
C 240 *Classic*
C 240 *Classic* 4MATIC
C 240 *Elegance*
C 240 *Elegance* 4MATIC
C 320
C 320 4MATIC

Sedan

1 C 240 and 4MATIC models available with automatic transmission only. 2 No system, no matter how sophisticated, can repeal the laws of physics or overcome careless driving actions. Please always wear your seat belt. 3 Braking effectiveness also depends on proper brake system maintenance, and tire and road conditions. 4 Optional on the C 230 Kompressor *Classic* and C 240 *Classic*. 5 Optional on the C 240 *Elegance*. 6 Optional on all models.

WARM WELCOME

A stylish cabin with modern comforts makes the roomy, 5-passenger C-Class Sedans deliciously inviting. The seduction commences with hand-polished Calyptus wood trim on the dash and console of the C230 Kompressor *Classic* and C240 *Classic*. Laurel wood trim graces the dash, console and doors of the C240 *Elegance* and C320 Sedans, complemented by leather front seating inserts.⁴ A 4-way steering column – with power adjustment standard on the C320 – quickly conforms to your preference.⁵ Comfortable and supportive, the C230 Kompressor *Classic*, C240 *Classic* and C240 *Elegance* front seats are 8-way adjustable – four of them power – while 10-way power front seats with 3-position memory are standard on the C320.⁵ With its multifunction dash display and convenient steering wheel controls, your C-Class Sedan also provides quick access to a wealth of information – everything from outside air temperature, engine oil level and trip computer data, to audio and phone⁶ status. Just one more defining element that sets a C-Class Sedan apart – and keeps you ahead of the game.

C-Class Sedan sophistication continues with a 6-speaker audio system featuring automatic speed-sensitive volume adjustment, or the sonic brilliance of an optional 10-speaker digital Bose® sound system. And to help keep you comfortable regardless of the weather, the dual-zone climate control systems in the C-Class Sedans incorporate an electrostatic dust filter and a humidity sensor as well as individually adjustable rear-cabin vents. The C320's digital system – optional on C240 *Elegance* – also includes a 4-way sun sensor to compensate for direct sunlight plus an activated charcoal filter with a smog sensor that automatically recirculates filtered cabin air when it detects an increase in certain types of pollution.

Every C-Class Sedan provides the reassuring security of eight air bags, including dual-stage front bags and side-impact air bags in each door, and Head Protection Curtains that can help safeguard outboard passengers from head injuries and broken glass. So you can feel secure, knowing that you're not simply welcome, but cherished.



Classic models.

C320 Sedan shown with optional automatic transmission, headlamp washers, power rear-window sunshade, antitheft alarm system, premium leather upholstery, heated front seats, and split-folding rear seat.



Intelligent ergonomics help make every drive in a C-Class Sedan an enjoyable affair. Well-placed instruments and switchgear, highly legible displays, intuitive controls and thoughtful details like a one-touch express-up/down feature for each of the four power windows help ensure a more relaxing atmosphere wherever you travel.

high performance, hyper value

Energized

215-hp V-6 for quicker getaways

new attitude every mile of the way

free-revving 189-hp supercharged four

17" alloy wheels



C 230 Kompressor || C 320 Sport Sedan

monochromatic door handles, blue-tinted glass, a stainless-steel exhaust finisher and new staggered-width 5-spoke 17" alloy wheels with high-performance tires¹ make an electrifying exterior statement.

Visceral power to match the visual punch of these Sport Sedans comes from a 189-hp 1.8-litre supercharged four in the C 230 Kompressor and a 215-hp 3.2-litre V-6 – with an aggressive, sport-tuned exhaust note – in the C 320. Either engine can be paired with the standard 6-speed manual transmission or an optional driver-adaptive 5-speed automatic with Touch Shift for manual-style control. Corners come alive thanks to a sport-tuned multilink suspension. And stopping power gets an added boost from larger 4-wheel disc brakes sporting perforated rotors and 4-piston calipers up front.

Invigorating by design, the C 230 Kompressor and C 320 Sport Sedans are always ready to add new intrigue to familiar roads. Sculpted lower bodywork, blacked-out grille slats,



¹ Z-rated tires are optimized for performance driving and may provide reduced ride comfort, increased tire noise, substantially increased treadwear and greater susceptibility to damage compared with H-rated tires.

INTERIOR MOTIVE

The C230 Kompressor and C320 Sport Sedans deliver bold interior impact as well. Textured aluminium trims the console and doors. Deeply bolstered sport front seats feature supple leather seating inserts. Their active vitality is directly reinforced by a new 3-spoke sport steering wheel with raised thumbgrips as well as a sport shift knob, both leather-wrapped for a more positive grip. Rubber-studded aluminium-trimmed pedals add even more visual excitement, while the standard 6-speed manual transmission now has 20% shorter throws for even quicker shifting. If all this stuff doesn't make you want to hit the road in a C-Class Sedan, it's time to hang up those custom-fit driving shoes.

C230 Kompressor Sport Sedan shown with optional automatic transmission, power rear-window sunshade, antitheft alarm system and heated front seats.



C 240 *Classic*
C 240 *Classic* 4MATIC
C 240 *Elegance*
C 240 *Elegance* 4MATIC
C 320
C 320 4MATIC

Wagon

At work or at play, the C 240 and C 320 Wagons are as capable as they are beautiful. Impeccably outfitted, their spacious interiors offer room for five – or up to 1,800 litres of cargo with the rear seat folded. And standard aluminium roof rails further enhance overall utility. Your choice of two responsive V-6 engines – with either mated to a driver-adaptive 5-speed automatic transmission with Touch Shift – translates into smooth takeoffs and strong passing power. 4MATIC™ all-wheel-drive models add an extra measure of driving confidence that ideally complements the precise handling of the 4-wheel multilink suspension and ESP stability control.¹ For added peace of mind, every Wagon also delivers advanced safety features like emergency-sensing Brake Assist that can potentially reduce stopping distances,² and the sheltering security of eight air bags – including Head Protection Curtains. Adventurous, and most assuredly engaging, the C-Class Wagons are ready to go when you are.

workhorse character with thoroughbred style

quick and quicker, a choice of V-6 engines

space for up to 1,800 litres of gear with the rear seat folded

4MATIC all-wheel-drive models for year-round confidence



C 320 Wagon shown with optional sunroof.

¹ No system, no matter how sophisticated, can repeal the laws of physics. Performance is limited by available traction, which snow, ice and other conditions can affect. Always drive carefully, consistent with conditions. Best performance in snow is obtained with winter tires. ² Braking effectiveness also depends on proper brake system maintenance, and tire and road conditions. ³ Optional on the C 240 *Classic*. ⁴ Optional on the C 240 *Elegance*. Not available on the C 240 *Classic*.

Controls on the steering wheel and a multifunction display let you adjust audio volume and program vehicle settings. You can also check coolant temperature, engine oil level, trip computer data and more – even the distance to the next service as calculated by the clever Flexible Service System.



ACCOMMODATING AMBIENCE

Blending singular sophistication with exceptional practicality, the C 240 and C 320 Wagons aim to please in every way possible. Beyond soft leather front seating inserts³ and hand-finished Laurel wood trim (Calyptus wood in the C 240 *Classic*), comfort and convenience items abound. We've even made the unexpected standard, like an intermittent rear-window wiper that automatically activates if you shift into Reverse while the front wipers are on.

C-Class Wagon indulgence begins with supportive front seats that adjust eight ways in the C 240 models and ten ways with 3-position memory in the C 320.⁴ Savour a 6-speaker audio system or the sweet sounds of an optional 10-speaker Bose® sound system. Even the dual-zone climate control exceeds expectations: In the C 320, for instance, a thoughtful REST mode

can recirculate residual heat for up to 30 minutes to help keep the cabin warm after parking.⁴

Whether venturing out to a local flea market or heading to a favourite campground, you can more than double the size of the cargo area in these Wagons by simply folding down the 60/40-split rear seat. They even offer clever design touches like a vertical net to divide the cabin from the cargo area, a luggage cover with slick one-touch retraction, and a 12-volt rear power outlet. As adaptable as they are athletic, the C 240 and C 320 Wagons take any task in stride.

Impulsive

performance plus European style at a surprising price
supercharged four with 189 high-spirited horses
optional Panorama roof opens new vistas
215-hp V-6 adds even more thrills



C 230 Kompressor Sport Coupe shown with optional Panorama roof.

C 230 Kompressor || C 320 Sport Coupe

You'll find the car you've always dreamed of in the C-Class Sport Coupes. Dramatic styling, unique interior trim and deeply bolstered sport front seats merely hint at their dynamic personalities. Both the 189-hp 1.8-litre supercharged four in the C 230 Kompressor Sport Coupe and the 215-hp V-6 in the C 320 deliver immediate acceleration. And a 6-speed manual transmission – or optional 5-speed automatic with Touch Shift control – makes changing gears intensely rewarding. A performance-tuned multilink suspension, ESP stability control and the confident stopping power of 4-wheel discs with Brake Assist give these Sport Coupes a full measure of aggressive spark. In the C 320, that spark gets extra sizzle from 17" alloy wheels, high-performance tires,¹ colour-keyed door handles, and a stainless-steel exhaust finisher (all available on the C 230 Kompressor as part of the optional Evolution Package). And we've saved the best for last: Even with standard features like dual-zone climate control and eight air bags, C-Class Sport Coupe pricing starts a lot lower than you might expect.

¹ Z-rated tires are optimized for performance driving and may provide reduced ride comfort, increased tire noise, substantially increased treadwear and greater susceptibility to damage compared with H-rated tires.

As bold inside – with generous room for four – as they are on the outside, the C-Class Sport Coupes are as good for show as they are for go. Your appetite for driving is whetted by standard 8-way adjustable sport front seats and a short-throw shifter. The C 320 adds patterned aluminium trim – even on the door sills – a leather-wrapped 3-spoke steering wheel with raised thumbgrips, leather-covered sport shift knob, and rubber-studded aluminium-trimmed pedals (all optional on the C 230 Kompressor as part of the Evolution Package).



C 320 Sport Coupe shown above right with optional automatic transmission, power-adjustable steering column, heated power-adjustable front seats with memory, and anti-theft alarm system.



HIGH PROFILE

Keeping your cool is a breeze in the captivating Sport Coupes. Dual-zone climate control with a dust filter, humidity sensor and rear-cabin air vents helps maintain the atmosphere to everyone's liking. And the standard 6-speaker audio system is specifically engineered to bring clean, clear sound to any seat in the house. An optional 8-speaker digital Bose® sound system adds another dimension with AudioPilot™, which uses a microphone in the cabin to "listen" and compensate for unwanted ambient noise.

Heading off for a long weekend? You'll appreciate the easy-going versatility of the 60/40-split folding rear seat. And if you're looking for a new perspective on life, the optional Panorama roof – tinted glass panels from windshield to liftgate, with an extra-large sliding glass sunroof – can bring the spirit of a convertible to the body of a coupe.

C 320 Sport Coupe shown with optional automatic transmission, premium leather upholstery and anti-theft alarm system.

C 32 AMG | Sport Sedan

The C 32 AMG showcases the white-hot synergy between Mercedes-Benz and its AMG performance division. A 349-hp supercharged V-6 handcrafted by AMG sends this spectacular sedan streaking to 100 km/h in just 5.1 seconds.¹ That same high-velocity excitement is evident in its AMG lower

bodywork, 17" AMG wheels, Z-rated high-performance tires² and unique interior treatment. The C32's driver-adaptive 5-speed automatic transmission uses AMG's SpeedShift™ programming to deliver 35% faster gear changes, prevent unwanted downshifts in hard corners, and let you preselect the best gear for maximum acceleration. Huge 4-wheel ventilated disc brakes, gripped by 4-piston calipers in front, provide intense stopping power. The suspension gains an AMG edge with performance-tuned shock absorbers, thicker stabilizer bars and recalibrated ESP programming that lets you take full advantage of the super sedan's lightning-like handling reflexes.



gear changes with SpeedShift

5.1-second sprints from 0 to 100 km/h

through corners, blistering in a straight line

Bold

appearance, even bolder performance

349-hp supercharged V-6



¹ Stated rates of acceleration are based upon manufacturer's track results and may vary depending upon model, environmental and road surface conditions, driving style, elevation and vehicle load. ² Z-rated tires are optimized for performance driving and may provide reduced ride comfort, increased tire noise, substantially increased treadwear and greater susceptibility to damage compared with H-rated tires. ³ Top speed electronically limited to 250 km/h. Obey all speed laws.



C32 AMG shown with optional antitheft alarm system.

COMPETITIVE EDGE

You can feel AMG's competition influence throughout the C32 AMG's cabin. Aggressively bolstered sport seats wrapped in AMG-design leather hold you tight in corners while offering 10-way power adjustment and dual-level heat. Textured aluminium trim adds an extra measure of high-energy appeal. Matching pleasure with business, the C32 also delivers welcome amenities like a 6-speaker audio system and digital dual-zone climate control. With the C32 AMG, the best of both worlds is simply the best.

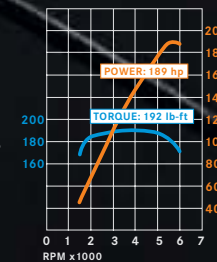
Everywhere you look, reminders of the C32 AMG's high-performance legacy abound. AMG-design perforated leather trims the seats in a monochrome or two-tone motif. A silver finish and 300-km/h speedometer³ set off the instrument cluster. Grab hold of that distinctive leather-covered shift knob and get ready for the drive of a lifetime.

Winning combinations

driving forces

Regardless of which C-Class engine and transmission pairing you choose, performance and efficiency will be fundamental parts of the operating equation. The supercharged four and the two naturally aspirated V-6s feature alloy blocks and heads that help save weight and improve overall vehicle balance. Sophisticated electronic management systems on all three engines allow the fuel and spark to be precisely controlled at each cylinder, to help enhance mileage and maintain low emissions. Another shared state-of-the-art feature is an electronic throttle that imparts a new level of responsiveness to accelerator inputs. And when you combine these inspired engines with the inspiring 6-speed manual gearbox or driver-adaptive 5-speed automatic,¹ you've got motivation to match all of your driving ambitions.

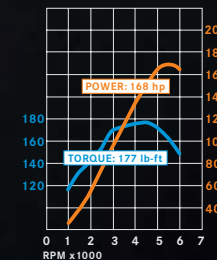
1.8-litre supercharged
4-cylinder



C 230 KOMPRESSOR ENGINE

Supercharged and intercooled for maximum responsiveness, the 1.8-litre four in the C 230 Kompressor models makes a robust 189 hp and 192 lb-ft of torque. Variable valve timing endows it with an exceptionally broad powerband for quicker acceleration and better passing performance.

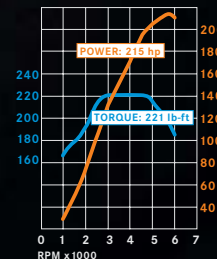
2.6-litre V-6



C 240 ENGINE

Innovative touches like a torque-enhancing intake manifold and two spark plugs for each cylinder help make the 2.6-litre SOHC V-6 a solid, low-emission performer. Developing 168 hp and 177 lb-ft of torque, it gives every C 240 smooth, efficient power.

3.2-litre V-6



C 320 ENGINE

The 3.2-litre V-6 in the C 320 models makes an exhilarating 215 hp and 221 lb-ft of torque. Exceptionally refined and responsive, it also runs low-emissions clean. And every rear-wheel-drive C 320 equipped with the automatic transmission is a Flexible Fuel Vehicle that can be fueled with premium gasoline, ethanol (E85) or a blend of E85 and premium gasoline.

¹ Manual transmission available only on C 230 Kompressor and C 320 Sport Coupes, Sport Sedans and Sedans. C 240, C 32 AMG, Wagon and 4MATIC models available with automatic transmission only.

quick change



**6-SPEED MANUAL
TRANSMISSION**

Standard on all rear-wheel-drive C230 Kompressor and C320 Sport Coupes, Sport Sedans and Sedans is a 6-speed stick that features a close-ratio gearset to help ensure fast, clean shifts. It's also got an extra-aggressive first gear for added zip off the line.

**DRIVER-ADAPTIVE
5-SPEED AUTOMATIC**

Standard on all C240, Wagon and 4MATIC models, and the C32 AMG (optional on the other models), our smooth, responsive driver-adaptive 5-speed automatic transmission matches its shift points to suit your driving style. The clever Touch Shift feature lets you tap the shift lever left or right for manual-style control.



Confidence to make every corner

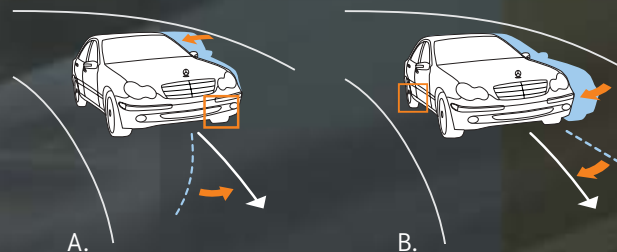
sure and secure

ELECTRONIC STABILITY PROGRAM

The C-Class enjoys a handling advantage that allows it to react quickly and confidently to unexpected driving situations. It's our Electronic Stability Program (ESP), which continuously monitors your steering and braking actions while you're cornering and compares them to the actual vehicle path. If it senses the onset of plowing (understeer) or fishtailing (oversteer), ESP brakes individual wheels and/or reduces excess engine power, to help keep you on course.¹ ESP also incorporates Acceleration Slip Control to help counteract wheelspin during acceleration.

A. ESP brakes the outside front wheel to counteract oversteer.

B. ESP brakes the inside rear wheel to counteract understeer.



¹ No system, no matter how sophisticated, can repeal the laws of physics or overcome careless driving actions. Please always wear your seat belt.
² Braking effectiveness also depends on proper brake system maintenance, and tire and road conditions.

feel directly connected

STRUCTURE, SUSPENSION AND STEERING

Brilliant handling begins with the basics. The C-Class starts with an extremely rigid body structure that vigorously resists twisting and flex to help maintain precise suspension geometry and improve ride comfort. Optimized weight distribution, rear-wheel drive and 16" or 17" tires help you put the power down more effectively, yielding an exceptional combination of balance and responsiveness. Complementing these elements is an advanced 4-wheel independent multilink suspension. Bolstered with gas-pressurized shock absorbers and rack-and-pinion steering, this sophisticated hardware controls the movement of each wheel with exacting accuracy. Get ready to take on corners with newfound confidence and enthusiasm.

a stop in time

ANTILOCK BRAKES WITH BRAKE ASSIST

In addition to standard 4-wheel disc brakes with ABS, every C-Class benefits from our emergency-sensing Brake Assist. Because Mercedes-Benz research has shown that drivers tend not to brake hard enough, soon enough, in an emergency, Brake Assist senses panic stopping by the speed at which you depress the brake pedal and automatically applies all available braking boost immediately. By helping to eliminate the delay caused by human nature, Brake Assist can potentially reduce stopping distances when it matters most.²



C 320 Sport Coupe shown with optional Panorama roof and premium leather upholstery.



4MATIC  All-wheel drive

A rain-slicked freeway. Your favourite twisty two-lane on a perfect summer day. That vacation to the ski slopes over winter break. No matter where you travel or what kind of road conditions you encounter, C 240 4MATIC™ and C 320 4MATIC Sedans and Wagons, deliver the extra handling confidence of all-wheel drive.

Traction in action

.....● more grip, less slip

With 4MATIC all-wheel drive, the traction of your C-Class is raised to the power of four. The system is always engaged and always sending torque to every wheel. But 4MATIC is so cleverly designed that you might not even know it's there – until you really need it. And 4MATIC is fully integrated with our standard Electronic Stability Program (ESP), which maximizes the effectiveness of the all-wheel drive system under all conditions.

.....● every wheel working for you

To help make sure that the driving power translates into control, 4MATIC incorporates our 4-wheel Electronic Traction System. 4-ETS monitors each wheel for the first sign of wheel slip, and can individually brake slipping wheels to maintain the balance of power, or reduce excess torque. By continuously ensuring that power goes to the wheels with grip, 4MATIC can help get you going even if only one wheel has traction.!



1 No system, no matter how sophisticated, can repeal the laws of physics. Performance is limited by available traction, which snow, ice and other conditions can affect. Always drive carefully, consistent with conditions. Best performance in snow is obtained with winter tires.

C320 4MATIC Sedan and C240 Elegance 4MATIC Wagon shown with optional Tele Aid system.

Stressed for success. The structural formula for the C-Class starts with an impressive list of individual ingredients: high-strength/low-alloy steel in critical areas, roof pillars employing three layers of steel, and a laser-welded, variable-thickness floorpan. Add in legendary Mercedes-Benz engineering expertise, and the result is an integrated vehicle structure that gives every C-Class unparalleled safety and security, as well as precise handling and a controlled ride.

..... comes from the heart

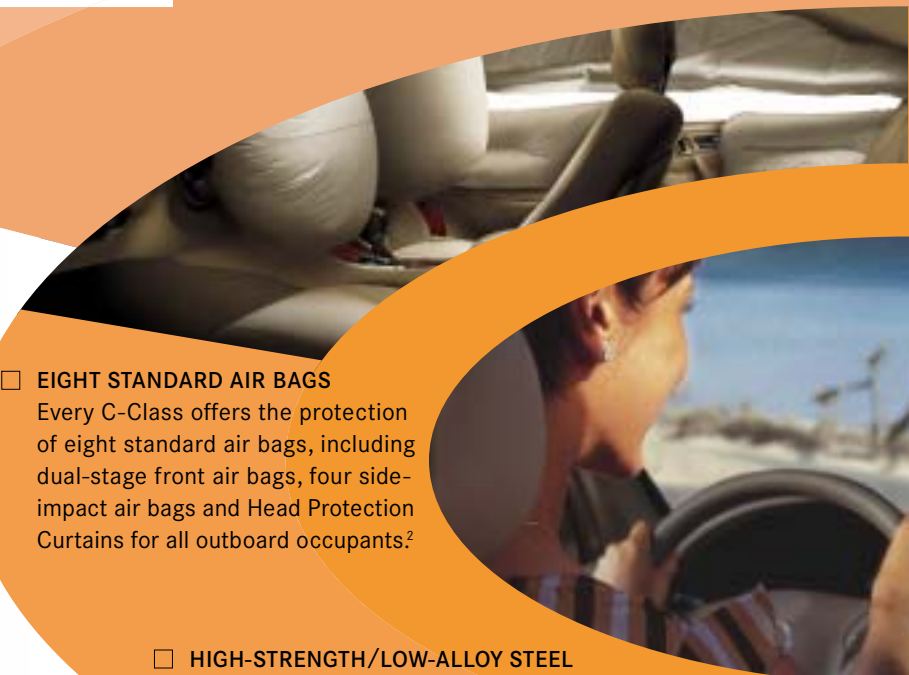
CRUMPLE ZONES

Advanced front and rear crumple zones progressively deform to help absorb the force of an impact. Full-width crossmembers and an ellipsoidal bulkhead help transfer impact energy around the cabin to help preserve the passenger space.



EIGHT STANDARD AIR BAGS

Every C-Class offers the protection of eight standard air bags, including dual-stage front air bags, four side-impact air bags and Head Protection Curtains for all outboard occupants.²



HIGH-STRENGTH/LOW-ALLOY STEEL

HSLA steel is used in critical areas throughout the body shell of the C-Class to help create an exceptionally rigid structure, maximizing integrity and minimizing chassis flex for improved handling.



..... in every corner

ELECTRONIC STABILITY PROGRAM (ESP)

In corners, ESP helps to correct oversteer (fishtailing) or understeer (plowing) by selectively applying the brakes to one or more wheels and/or by reducing excess engine power.¹



A sense of security surrounds you

□ EMERGENCY-SENSING BRAKE ASSIST

Complementing the antilock brakes in your C-Class, Brake Assist can sense panic stopping and automatically apply all available power brake boost instantly to potentially reduce stopping distances.³



□ SIDE-IMPACT PROTECTION

The reinforced floorpan, doors and door sills in every C-Class are part of an integrated safety structure that affords formidable protection against side impacts.



□ EMERGENCY TENSIONING DEVICES AND BELT FORCE LIMITERS

All four outboard seat belts feature Emergency Tensioning Devices, which help remove seat-belt slack in a sufficiently severe front or rear impact, and belt force limiters, which help reduce the peak deceleration forces on belted occupants.



□ ACCELERATION SLIP CONTROL (ASR)

ASR traction control helps limit wheelspin during hard acceleration or on slippery road surfaces.¹

□ A HEAD RESTRAINT FOR EVERY OCCUPANT

And when there are no rear-seat passengers on board, the rear head restraints can be folded down to improve the driver's rearward view.



At Mercedes-Benz, we take an integrated approach to safety engineering, reflecting a desire to build vehicles that optimize both the driver's ability to avoid an accident and the car's potential for protecting all on board should an impact occur. The robust structure and advanced safety technologies of the C-Class allow it to pass our rigorous battery of no fewer than 28 different crash tests – more than any single government currently requires. Standard safety features, including our Electronic Stability Program (ESP), Acceleration Slip Control and emergency-sensing Brake Assist, can be appreciated every day. Others – including a comprehensive system of air bags, seat-belt Emergency Tensioning Devices and belt force limiters – you may never experience. But in any case, you can rest assured knowing that these sentinels of safety will be on guard for you.

A suite of air bags. Every C-Class model offers the comprehensive protection of eight standard air bags. No other class competitor offers more. It starts with dual-stage front air bags that vary their inflation rates in response to impact severity.

To help protect you in side impacts, every C-Class also comes with individual front and rear side-impact air bags. As a final measure of added security, multiple-chamber Head Protection Curtains help protect outboard occupants from head injury and broken glass in rollovers and side impacts.

only a Mercedes can provide



¹ No system, no matter how sophisticated, can repeal the laws of physics or overcome careless driving actions. Please always wear your seat belt. ² **WARNING:** THE FORCES OF A DEPLOYING AIR BAG CAN CAUSE SERIOUS OR FATAL INJURY TO A CHILD UNDER AGE 13. THE SAFEST SEATING POSITION FOR YOUR CHILD IS IN THE REAR SEAT, BELTED INTO AN APPROPRIATE, PROPERLY INSTALLED CHILD SEAT, OR CORRECTLY WEARING A SEAT BELT IF TOO LARGE FOR A CHILD SEAT. **A CHILD UNDER 13 MUST NOT USE THE FRONT SEAT UNLESS THE CHILD IS BELTED INTO AN APPROPRIATE, PROPERLY INSTALLED BABYSMART-COMPATIBLE CHILD SEAT. A CHILD UNDER 13 WHO IS TOO LARGE FOR A CHILD SEAT MUST NOT USE THE FRONT SEAT. SEE OPERATOR'S MANUAL FOR ADDITIONAL WARNINGS AND INFORMATION ON AIR BAGS, SEAT BELTS AND CHILD SEATS.** At time of press, the toddler seat (for children 9–18 kg) is not approved for use in Canada. ³ Braking effectiveness also depends on proper brake system maintenance, and tire and road conditions.

Customer care

This is a page full of ownership benefits that accompany your Mercedes-Benz. A page no other carmaker can duplicate. For every benefit you see here, we've got experienced and knowledgeable people to support you. And driving a Mercedes keeps all of this as close as your local dealer and as convenient as a phone call to 1-800-387-0100.

24-HOUR ROADSIDE ASSISTANCE

During the basic warranty coverage of 48 months and the time duration of the optional Extended Limited Warranty, Mercedes-Benz Roadside Assistance will be at your service. We'll bring you some gas, replace a flat tire with your spare, or jump-start your car. In the event of a mechanical breakdown, if attempts by our Roadside Assistance technician have not made your vehicle safely operable, towing service will be provided to the nearest Mercedes-Benz dealership. Assistance is available 24 hours a day, every day, to anyone driving a Mercedes-Benz anywhere in Canada or the continental U.S.¹

CUSTOMER SERVICE

Owning a Mercedes-Benz means that when you have a question, we're here to help. Our Customer Service Centre is open 9 a.m. to 5 p.m. EST, Monday through Friday, and is staffed with knowledgeable Mercedes-Benz people who can talk you through the finer points of working your car's audio system – or even assist you in locating the nearest Mercedes-Benz dealership. Just call 1-800-387-0100. It's that simple.

GENUINE MERCEDES-BENZ PARTS

Your dealer has access to a vast inventory of parts for both new and vintage Mercedes-Benz vehicles. And we've made a nationwide effort to encourage our dealers to keep parts and labour prices competitive with those of independent garages.

MERCEDES-BENZ WARRANTIES

The Mercedes-Benz New Car Limited Warranty covers defects in materials or workmanship for 48 months or 80,000 km, whichever occurs first. Major components such as the engine, transmission, drivetrain, fuel and cooling systems, steering and brakes are covered for 5 years or 120,000 km. To widen your window of confidence, you can opt for a Mercedes-Benz Extended Limited Warranty as well.²

TRIP INTERRUPTION REIMBURSEMENT

If a breakdown covered by your New Car Limited Warranty occurs more than 80 km from your home, leaves your Mercedes-Benz vehicle inoperable or unsafe to drive, and requires overnight repairs, we've got you covered. You will be reimbursed up to \$500 for hotel accommodations and up to \$600 for alternate travel expenses per incident while your car is being repaired at an authorized Mercedes-Benz dealership.

WEAR AND TEAR COVERAGE

For 24 months or 40,000 km (whichever comes first), many items normally considered "wear and tear," such as light bulbs, wiper blade refills, and brake pads and discs, are covered. If necessary, an authorized Mercedes dealer will replace these parts at no charge to you.

TIME FOR BASIC MAINTENANCE? ASK YOUR MERCEDES.

No two drivers are the same. That's why the Flexible Service System in your Mercedes monitors certain indicators of oil condition, engine loads, rpm, operating temperatures and your driving habits to determine when basic maintenance is really necessary.³ Then a display on the dash reminds you to contact your Mercedes-Benz dealer for an appointment. So you can spend less time servicing your Mercedes and more time enjoying your life.

ALTERNATE TRANSPORTATION

Your life doesn't have to get put on hold just because it's time for service or maintenance on your car. That's why your Mercedes-Benz dealer always endeavours to provide you with alternate transportation when you drop off your vehicle for service.⁴

¹ Vehicle must be accessible from main roads. Emergency Roadside Assistance may involve charges for parts, service and towing. Depending on the circumstances, assistance may come from an outside service provider, courtesy of Mercedes-Benz Emergency Roadside Assistance. For full details of the Roadside Assistance Program, please see your dealer. ² Please see your dealer for warranty details as well as for terms, conditions and pricing for extended warranty options. ³ Maintenance items are identified in the Service Booklet for each model. Driver is responsible for monitoring fluid levels and tire pressures between service visits. Limitations apply. ⁴ Certain restrictions may apply. Terms, conditions and dealer participation may vary. ⁵ First year's monitoring included at no cost with subscription. Subscription is required for service to be active. Tele Aid operates only where cellular and Global Positioning System coverage are available.

Enlightened in-car communications



Optional Tele Aid puts three buttons in your C-Class that can give you a direct connection with Mercedes-Benz support and people who specialize in knowing the right answers and knowing what to do when it comes to helping preserve your schedule, your sanity, and maybe even your safety.⁵

i-BUTTON

The Tele Aid *i*-button lets you talk directly to our Customer Service Centre, where trained Mercedes-Benz representatives can answer questions you may have about your vehicle. Everything from “How do I replace the battery in my remote key?” to “Where’s the nearest dealer?” Just press the button and we’ll be there to help out.



SOS BUTTON

Whether you need emergency assistance or see someone who does, push the Tele Aid SOS button. In a matter of moments, you’ll be in touch with emergency response personnel who’ll already know the location of your C-Class and can summon police, paramedics or other assistance to you. And if an air bag or seat-belt Emergency Tensioning Device deploys, the Tele Aid system will call for emergency help automatically, even if you can’t push the button.



WRENCH BUTTON

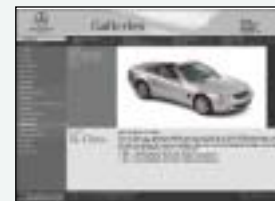
You’re miles from nowhere and you have a flat, run out of fuel or see a warning lamp. The wrench button gives you a one-touch voice link to Mercedes-Benz Roadside Assistance. Tele Aid can automatically tell us the model and location of your C-Class. Our staff will talk you through the trouble or, if necessary, dispatch a Roadside Assistance vehicle to your precise location.¹



OUR WORLD – AT YOUR FINGERTIPS

Still looking for more Mercedes information? Visit mercedes-benz.ca to open an online window to Mercedes-Benz and our vehicles. Here, you can get information about any Mercedes, download eBrochures or take a look at financing and leasing options. Our website also offers details about European Delivery, the Mercedes-Benz Extended Limited Warranty, upcoming product information, Mercedes-Benz Customer Care, Service First and more – including the history of Mercedes-Benz. There’s a world of information, but only one address to remember: mercedes-benz.ca.

mercedes-benz.ca



C-Class specifications

	C 230 KOMPRESSOR SPORT COUPE C 230 KOMPRESSOR CLASSIC SEDAN C 230 KOMPRESSOR SPORT SEDAN	C 240 AND C 240 4MATIC SEDANS C 240 AND C 240 4MATIC WAGONS	C 320 SPORT COUPE C 320 SPORT SEDAN C 320 AND C 320 4MATIC SEDANS C 320 AND C 320 4MATIC WAGONS	C 32 AMG SPORT SEDAN
ENGINE AND DRIVETRAIN				
Engine	Intercooled supercharged DOHC 16-valve inline-4. Dual balance shafts. High-pressure die-cast alloy cylinder block. Alloy heads.	SOHC 18-valve 90° V-6. High-pressure die-cast alloy cylinder block. Alloy heads.	SOHC 18-valve 90° V-6. High-pressure die-cast alloy cylinder block. Alloy heads.	AMG-built intercooled supercharged SOHC 18-valve 90° V-6. High-pressure die-cast alloy cylinder block. Reinforced crankshaft and valvetrain. Alloy heads. Lightweight camshafts.
Displacement	1,796 cc	2,597 cc	3,199 cc	3,199 cc
Net power	189 hp @ 5,800 rpm	168 hp @ 5,700 rpm	215 hp @ 5,700 rpm	349 hp @ 6,100 rpm
Net torque	192 lb-ft @ 3,500-4,000 rpm	177 lb-ft @ 4,700 rpm	221 lb-ft @ 3,000-4,600 rpm	332 lb-ft @ 4,400 rpm
Compression ratio	8.7:1	10.5:1	10.0:1	9.0:1
Fuel requirement	Premium unleaded gasoline, 91 pump octane.	Premium unleaded gasoline, 91 pump octane.	Premium unleaded gasoline, 91 pump octane. With rear-wheel drive and automatic transmission: Flexible Fuel Vehicle can operate on premium unleaded gasoline (91 pump octane), ethanol (E85), or a blend of E85 and premium gasoline.	Premium unleaded gasoline, 91 pump octane.
Fuel and ignition system	SIM 4 engine management. Integrated sequential multipoint fuel injection and ignition with individual cylinder control of fuel spray, spark timing and antiknock. Electronic throttle.	ME 2.8 engine management. Integrated sequential multipoint fuel injection and phased twin-spark ignition includes individual cylinder control of fuel spray, spark timing and phase, and antiknock. Electronic throttle. Two high-energy ignition coils and two spark plugs per cylinder, with 160,000-km spark plug intervals.	ME 2.8 engine management.	ME 2.8 engine management.
Intake system	Variable intake-valve timing. Roots-type rotary-piston supercharger with air-to-air intercooler.	Magnesium 2-stage resonance intake manifold increases intake runner length at lower rpm for improved response.		Helical high-pressure supercharger with electromechanical clutch and liquid-to-air intercooler.
Manual transmission	Standard. Fully synchronized 6-speed with clutch-starter interlock. Short-throw shifter standard on Sport Sedan, included with Sport Coupe Evolution Package.	Not available.	Rear-wheel-drive models (except Wagon): Standard. C320 Wagon and 4MATIC models: Not available. Fully synchronized 6-speed with clutch-starter interlock. Short-throw shifter standard on Sport Coupe and Sport Sedan.	Not available.
Automatic transmission	Optional. Driver-adaptive electronic 5-speed. Touch Shift allows driver to manually downshift and allow upshifts by nudging the shift lever left or right from the Drive position. Driver-selectable comfort mode starts vehicle moving in 2nd gear or a second Reverse gear, and upshifts at lower rpm, to help improve control on slippery surfaces. Shift into Optimum Gear programming allows one-touch selection of the best gear for maximum acceleration or engine braking by holding the shift lever to the left of Drive for one second. Display in instrument cluster indicates selected gear range and mode.	Standard.	C 320 Wagon and 4MATIC models: Standard. Rear-wheel-drive models (except Wagon): Optional.	Standard. AMG-enhanced driver-adaptive electronic 5-speed. Touch Shift allows driver to manually downshift and allow upshifts by nudging the shift lever left or right from Drive. AMG SpeedShift™ programming provides up to 35% faster gear changes, automatically downshifts during braking, prevents unwanted upshifting while cornering, offers one-touch selection of the best gear for maximum acceleration (Shift into Optimum Gear), and features torque converter lockup in all forward gears. Transmission also includes driver-selectable comfort mode and instrument-cluster display of selected gear range/mode.
Rear axle ratio	3.46:1	3.46:1	3.27:1	3.06:1

TRACTION AND STABILITY

Electronic Stability Program (ESP) and Acceleration Slip Control (ASR)	Standard ESP compares the driver's intended course, via steering and braking inputs, to the vehicle's response, via lateral acceleration, rotation (yaw) and individual wheel speeds. ESP then brakes individual front or rear wheels and/or reduces excess engine power as needed to help correct understeer (plowing) or oversteer (fishtailing). ESP incorporates the functions of ASR traction control, which senses drive-wheel slip and individually brakes the slipping wheel or wheels, and/or reduces excess engine power, until control is regained. ¹			
4MATIC™ all-wheel drive with 4-wheel Electronic Traction System (4-ETS)	Not available.	C 240 4MATIC Sedans and Wagons: Standard. C 240 Sedans and Wagons: Not available.	C 320 4MATIC Sedan and Wagon: Standard. C 320 Sport Coupe, Sport Sedan, Sedan, Wagon: Not available.	Not available.
	4MATIC features a permanent 40/60 front/rear torque split maintained via a planetary centre differential. 4-ETS monitors the speed of all four wheels to detect wheel slip, then applies individual brakes as needed to provide the effect of locking the front, rear and/or centre differentials, and/or reduces excess engine power. 4-ETS continually balances the torque split to ensure that power is permitted to flow to the wheel(s) with traction. 4MATIC also incorporates the functions of ESP and ASR. ¹			

PERFORMANCE

	Manual		Automatic		Manual		Automatic		Automatic	
Acceleration, 0-100 km/h²	Sport Coupe: 7.4 sec	7.7 sec	Sedans: 8.9 sec		Sport Coupe: 7.0 sec	7.1 sec	Sport Coupe: 7.0 sec	7.1 sec	Sport Coupe: 7.0 sec	7.1 sec
	Sport Sedan: 7.8 sec	8.0 sec	4MATIC Sedans: Information not available.		Sport Sedan: 7.0 sec	7.1 sec	Sport Sedan: 7.0 sec	7.1 sec	Sport Sedan: 7.0 sec	7.1 sec
	Sedan: 7.8 sec	8.0 sec	Wagons: 8.9 sec		Sedan: 7.0 sec	7.1 sec	4MATIC Sedan: Not available.	Information not available.	4MATIC Sedan: Not available.	Information not available.
			4MATIC Wagons: Information not available.		Wagon: Not available.	7.0 sec	4MATIC Wagon: Not available.	Information not available.	4MATIC Wagon: Not available.	Information not available.
Fuel economy, city estimate³	Sport Coupe: 10.5 l/100 km	10.2 l/100 km	Sedans: 12.4 l/100 km		Sport Coupe: 12.7 l/100 km	11.8 l/100 km	Sport Coupe: 12.7 l/100 km	11.8 l/100 km	Sport Coupe: 12.7 l/100 km	11.8 l/100 km
	Sport Sedan: 10.5 l/100 km	10.2 l/100 km	4MATIC Sedans: 12.3 l/100 km		Sport Sedan: 12.7 l/100 km	11.8 l/100 km	Sport Sedan: 12.7 l/100 km	11.8 l/100 km	Sport Sedan: 12.7 l/100 km	11.8 l/100 km
	Sedan: 10.5 l/100 km	10.2 l/100 km	Wagons: 12.3 l/100 km		Sedan: 12.7 l/100 km	11.8 l/100 km	4MATIC Sedan: Not available.	12.2 l/100 km	4MATIC Sedan: Not available.	12.2 l/100 km
			4MATIC Wagons: 12.3 l/100 km		Wagon: Not available.	11.8 l/100 km	4MATIC Wagon: Not available.	12.2 l/100 km	4MATIC Wagon: Not available.	12.2 l/100 km
Fuel economy, highway estimate³	Sport Coupe: 7.2 l/100 km	7.1 l/100 km	Sedans: 8.9 l/100 km		Sport Coupe: 8.3 l/100 km	8.2 l/100 km	Sport Coupe: 8.3 l/100 km	8.2 l/100 km	Sport Coupe: 8.3 l/100 km	8.2 l/100 km
	Sport Sedan: 7.2 l/100 km	7.1 l/100 km	4MATIC Sedans: 8.7 l/100 km		Sport Sedan: 8.3 l/100 km	8.2 l/100 km	Sport Sedan: 8.3 l/100 km	8.2 l/100 km	Sport Sedan: 8.3 l/100 km	8.2 l/100 km
	Sedan: 7.2 l/100 km	7.1 l/100 km	Wagons: 8.8 l/100 km		Sedan: 8.3 l/100 km	8.2 l/100 km	4MATIC Sedan: Not available.	8.1 l/100 km	4MATIC Sedan: Not available.	8.1 l/100 km
			4MATIC Wagons: 8.7 l/100 km		Wagon: Not available.	8.2 l/100 km	4MATIC Wagon: Not available.	8.1 l/100 km	4MATIC Wagon: Not available.	8.1 l/100 km

		C 230 KOMPRESSOR SPORT COUPE C 230 KOMPRESSOR CLASSIC SEDAN C 230 KOMPRESSOR SPORT SEDAN	C 240 AND C 240 4MATIC SEDANS C 240 AND C 240 4MATIC WAGONS	C 320 SPORT COUPE C 320 SPORT SEDAN C 320 AND C 320 4MATIC SEDANS C 320 AND C 320 4MATIC WAGONS	C 32 AMG SPORT SEDAN
SUSPENSION	Front suspension	Independent 3-link (double wishbone on 4MATIC models) with antidive geometry. Coil springs over gas-pressurized shock absorbers. Stabilizer bar.			
	Rear suspension	Independent 5-arm multilink with geometry for antisquat and alignment control. Separate coil springs and gas-pressurized shock absorbers. Stabilizer bar.			
	Sport suspension	Sport Coupe and Sport Sedan: Standard. Classic Sedan: Not available. Sport-tuned shock absorbers. Thicker front and rear stabilizer bars.	Not available.	Sport Coupe and Sport Sedan: Standard. Sedan, Wagon: Not available. Sport-tuned shock absorbers. Thicker front and rear stabilizer bars.	AMG-tuned coil springs and gas-pressurized shock absorbers. Thicker front and rear stabilizer bars.

STEERING

	Steering type	Rack-and-pinion with power assist and integrated hydraulic damper.	Rack-and-pinion with power assist and integrated hydraulic damper.	Rack-and-pinion with power assist and integrated hydraulic damper.	Rack-and-pinion with power assist and integrated hydraulic damper.
	Steering wheel turns	3.3 lock-to-lock	3.3 lock-to-lock	3.3 lock-to-lock	3.3 lock-to-lock
	Turning circle	35.3 ft/10.76 m curb-to-curb	35.3 ft/10.76 m curb-to-curb	35.3 ft/10.76 m curb-to-curb	35.3 ft/10.76 m curb-to-curb

WHEELS AND TIRES

	Wheels , aluminium-alloy	C 230 Kompressor Sport Coupe: 5-double-spoke design, 7.0Jx16 (standard). 7-spoke design, 7.5Jx17 (with optional Evolution Package). C 230 Kompressor Classic and C 240 Classic Sedans: 5-double-spoke design, 7.0Jx16. C 320 Sport Coupe: 7-spoke design, 7.5Jx17. C 230 Kompressor and C 320 Sport Sedans: 5-spoke design, 7.5Jx17 front and 8.5Jx17 rear. C 240 Elegance and C 320 Sedans and Wagons: 7-spoke design, 7.0Jx16.			Polished AMG double-spoke design, 7.5Jx17 front and 8.5Jx17 rear.
	Tires , steel-belted radial	C 230 Kompressor Sport Coupe: 205/55R16 91H, all-season performance (standard). 225/45ZR17, high-performance ⁴ (with optional Evolution Package). C 230 Kompressor Classic and C 240 Classic Sedans: 205/55R16 91H, all-season performance. C 320 Sport Coupe: 225/45ZR17, high-performance. ⁴ C 230 Kompressor and C 320 Sport Sedans: 225/45ZR17 front and 245/40ZR17 rear, high-performance. ⁴ C 240 Elegance and C 320 Sedans and Wagons: 205/55R16 91H, all-season performance.			225/45ZR17 91Y front and 245/40ZR17 91Y rear, high-performance. ⁴

BRAKES

	Brake system	Dual-circuit power-assisted 4-wheel disc.	Dual-circuit power-assisted 4-wheel disc.	Dual-circuit power-assisted 4-wheel disc.	AMG-enhanced dual-circuit power-assisted 4-wheel disc.
	Brake discs , front – rear	Sport Coupes, Sedans and Wagons: Ventilated front discs. Solid rear discs. Sport Sedans: Enlarged perforated and internally ventilated front discs with painted 4-piston fixed-type calipers. Solid rear discs.			Enlarged perforated and internally ventilated front discs with 4-piston fixed-type calipers. Ventilated rear discs with dual-piston fixed-type calipers.
	Antilock Braking System (ABS)	ABS senses impending wheel lockup under heavy braking and pumps the front brakes individually or the rear brakes together (to help maintain stability) as needed up to 30 times per second, to prevent lockup and maintain steering ability.			
	Brake Assist	Brake Assist senses emergency braking via the speed at which the driver presses the brake pedal and immediately applies maximum available power boost, potentially reducing the overall stopping distance by helping to eliminate the delay caused by a common human tendency not to brake hard enough, soon enough. Letting up on the brake pedal releases Brake Assist. ⁵			

EXTERIOR DIMENSIONS

	SPORT COUPES	SPORT SEDANS AND SEDANS	WAGONS	C 32 AMG SPORT SEDAN
Wheelbase	106.9 in/2,715 mm	106.9 in/2,715 mm	106.9 in/2,715 mm	106.9 in/2,715 mm
Overall length	171.0 in/4,343 mm	178.2 in/4,526 mm	178.9 in/4,541 mm	178.2 in/4,526 mm
Overall height	54.3 in/1,379 mm	55.1 in/1,400 mm	56.7 in/1,441 mm (includes roof rails)	55.1 in/1,400 mm
Overall width	68.0 in/1,728 mm	68.0 in/1,728 mm	68.0 in/1,728 mm	68.0 in/1,728 mm
Track , front – rear	58.8 in/1,493 mm – 57.6 in/1,464 mm	58.8 in/1,493 mm – 57.6 in/1,464 mm	58.8 in/1,493 mm – 57.6 in/1,464 mm	58.8 in/1,493 mm – 57.6 in/1,464 mm
Coefficient of drag	0.29	0.27	0.31	0.27
Curb weight , manual – automatic	C 230 Kompressor: 3,185 lb/1,445 kg – 3,230 lb/1,465 kg C 320: 3,385 lb/1,535 kg – 3,415 lb/1,550 kg	C 230 Kompressor: 3,185 lb/1,445 kg – 3,230 lb/1,465 kg C 240: Not available – 3,265 lb/1,525 kg C 240 4MATIC: Not available – 3,520 lb/1,595 kg C 320: 3,440 lb/1,555 kg – 3,450 lb/1,565 kg C 320 4MATIC: Not available – 3,550 lb/1,610 kg	C 240: Not available – 3,470 lb/1,575 kg C 240 4MATIC: Not available – 3,625 lb/1,645 kg C 320: Not available – 3,495 lb/1,585 kg C 320 4MATIC: Not available – 3,660 lb/1,660 kg	C 32 AMG: Not available – 3,540 lb/1,605 kg

INTERIOR DIMENSIONS

Headroom , front – rear	38.5 in/979 mm – 36.3 in/922 mm	38.9 in/987 mm – 37.3 in/948 mm	38.5 in/987 mm – 38.0 in/964 mm	38.9 in/987 mm – 37.3 in/948 mm
Legroom , front – rear	42.0 in/1,067 mm – 33.0 in/837 mm	41.7 in/1,059 mm – 33.0 in/838 mm	42.0 in/1,067 mm – 33.0 in/837 mm	41.7 in/1,059 mm – 33.0 in/838 mm
Hiproom , front – rear	52.9 in/1,344 mm – 45.8 in/1,163 mm	51.9 in/1,318 mm – 54.5 in/1,384 mm	51.9 in/1,318 mm – 54.5 in/1,384 mm	51.9 in/1,318 mm – 54.5 in/1,384 mm
Shoulder room , front – rear	52.8 in/1,341 mm – 51.7 in/1,312 mm	53.1 in/1,350 mm – 54.3 in/1,378 mm	53.2 in/1,350 mm – 54.3 in/1,378 mm	53.1 in/1,350 mm – 54.3 in/1,378 mm
Cabin capacity	84.9 cu ft/2,488 litres	85.5 cu ft/2,506 litres	89.3 cu ft/2,616 litres	85.5 cu ft/2,506 litres
Cargo capacity	99 cu ft/280 litres (rear seats in use) 38.1 cu ft/1,080 litres (rear seats folded)	15.2 cu ft/430 litres	25.2 cu ft/713 litres (rear seats in use) 63.6 cu ft/1,800 litres (rear seats folded)	15.2 cu ft/430 litres

1 No system, no matter how sophisticated, can repeal the laws of physics or overcome careless driving actions. Best performance in snow is obtained with winter tires. Please always wear your seat belt. 2 Stated rates of acceleration are based upon manufacturer's track results and may vary depending upon model, environmental and road surface conditions, driving style, elevation and vehicle load. 3 2004 Natural Resources Canada *Fuel Consumption Guide* ratings. Ratings are submitted to Transport Canada by the vehicle manufacturer, who certifies that the tests and

calculations were carried out according to approved Transport Canada test methods. Transport Canada then verifies the accuracy of the data before the *Fuel Consumption Guide* is published. 4 Z-rated tires are optimized for performance driving and may provide reduced ride comfort, increased tire noise, substantially increased treadwear and greater susceptibility to damage compared with H-rated tires. 5 Braking effectiveness also depends on proper brake system maintenance, and tire and road conditions.

C-Class standard equipment

C230 KOMPRESSOR SPORT COUPE C320 SPORT COUPE	C230 KOMPRESSOR CLASSIC SEDAN C240 CLASSIC SEDANS AND WAGONS	C230 KOMPRESSOR SPORT SEDAN C320 SPORT SEDAN	C240 ELEGANCE SEDANS AND WAGONS C320 SEDANS AND WAGONS	C32 AMG SPORT SEDAN	
					MECHANICAL FEATURES
●	●	—	—	—	6-speed manual transmission (not available on C320 Wagon or 4MATIC models).
○	○	○	○	○	Driver-adaptive electronic 5-speed automatic transmission with Touch Shift (standard on C320 Wagon and all 4MATIC models).
—	—	—	—	●	AMG SpeedShift™ high-performance transmission programming (see description, page 22).

C230 KOMPRESSOR SPORT COUPE C320 SPORT COUPE	C230 KOMPRESSOR CLASSIC SEDAN C240 CLASSIC SEDANS AND WAGONS	C230 KOMPRESSOR SPORT SEDAN C320 SPORT SEDAN	C240 ELEGANCE SEDANS AND WAGONS C320 SEDANS AND WAGONS	C32 AMG SPORT SEDAN	
					EXTERIOR FEATURES
—	—	—	—	●	AMG-design sculpted front air dam with mesh air intakes, side skirts and rear apron.
●	●	—	—	—	Black door handles.
○	●	—	●	●	Colour-keyed door handles (with chrome trim on C240 <i>Elegance</i> and C320 Sedans and Wagons).
●	—	—	—	—	Atlas Grey slotted grille with chrome upper and lower trim and grille-mounted Star. Neutral-tinted glass.
—	—	—	—	—	Stone Grey ribbed grille with chrome accents and chrome surround. Neutral-tinted glass.
—	—	●	—	●	Black grille with four chrome ribs and chrome surround. Blue-tinted glass.
—	—	—	—	●	Atlas Grey grille with four chrome ribs and chrome surround. Neutral-tinted glass.
●	—	●	—	—	Polished stainless-steel exhaust finisher (with dual tailpipes on C32 AMG).
●	●	●	●	●	Variable-focus halogen headlamps. Halogen front foglamps. Single red rear foglamp.
●	●	●	●	●	Daytime Running Lamps illuminate low-beam headlamps at reduced intensity (full intensity for optional Bi-Xenon lamps) in daylight, with auto-on override in darkness.
●	●	●	●	●	Touch Turn Signals flash three times with one touch of the turn-signal lever, for more convenient lane-changing. Auxiliary LED turn signal indicators, integrated with side mirror housings.
●	●	●	●	●	Automatic lamp substitution uses a nearby lamp if a critical bulb fails.
●	●	●	●	●	Dual power mirrors, linked to driver's seat memory ² and automatically heated.
●	●	●	●	●	Auto-dimming left-side mirror.
○ ²	○ ²	—	○ ²	○ ²	Parking-assist right-side mirror can be programmed to tilt down upon shifting to Reverse.
●	●	●	●	●	Electrically heated rear window with auto-shutoff based on time and outside temperature.
●	●	●	●	●	Dual windshield wipers with aero wiper blades. Heated washer nozzles, lines and reservoir.
—	—	—	●	—	Intermittent rear wiper, with heated washer. When the front wipers are on, shifting to Reverse activates the rear wiper (Wagons only).
—	—	—	●	—	Protective-coated roof rails (Wagons only).

C230 KOMPRESSOR SPORT COUPE C320 SPORT COUPE	C230 KOMPRESSOR CLASSIC SEDAN C240 CLASSIC SEDANS AND WAGONS	C230 KOMPRESSOR SPORT SEDAN C320 SPORT SEDAN	C240 ELEGANCE SEDANS AND WAGONS C320 SEDANS AND WAGONS	C32 AMG SPORT SEDAN	
					LOCKING AND SECURITY
●	●	●	●	●	SmartKey remote central locking system uses redundant infrared and radio-frequency signals for improved range, and rolling-code signal for protection from transmitter cloning.
●	●	●	●	●	SmartKey uses an electronic code to unlock the steering column and ignition. Removing SmartKey from ignition disables the engine computer to help prevent unauthorized engine starting.
●	●	●	●	●	SmartKey remote control integrates door lock/unlock buttons (including liftgate on Sport Coupes and Wagons), remote trunk opener (Sedans), removable valet key (plus optional anti-theft alarm, if equipped). Driver may selectively unlock only the driver's door and fuel filler, or all the doors plus the trunk/liftgate and fuel filler.
●	●	●	●	●	Driver-programmable user-recognition feature links each SmartKey to driver's preferences (up to three individual users per car). Each SmartKey recalls for its assigned driver: memory features ² for driver's seat, outside mirrors and power steering column position; and various climate control settings.
●	●	●	●	●	SmartKey offers infrared-remote opening/closing of windows (plus optional sunroof, if equipped) from outside the car.
●	●	●	●	●	Driver-programmable driveaway locking can automatically lock the doors when the car reaches 15 km/h.
●	●	●	●	●	Night security illumination uses the car's exterior lights to help illuminate a path after parking in darkness. Driver-programmable intervals allow lights to stay on for 60, 45, 30 or 15 seconds, or not at all.
●	●	●	●	●	Locator lighting uses the car's lights to help light a return path when the car is remote-unlocked in darkness. Unlocking car activates illuminated entry system.
●	●	●	●	●	Emergency trunk release, located inside cargo area and illuminated for 60 minutes after the trunk lid or liftgate is closed (Sport Coupes and Sedans only).
●	●	●	●	●	Integrated 3-button garage door control (integrated with inside rearview mirror), compatible with HomeLink® components and some other systems.

● STANDARD ○ OPTIONAL — NOT AVAILABLE

C230 KOMPRESSOR SPORT COUPE C320 SPORT COUPE	C230 KOMPRESSOR CLASSIC SEDAN C240 CLASSIC SEDANS AND WAGONS	C230 KOMPRESSOR SPORT SEDAN C320 SPORT SEDAN	C240 ELEGANCE SEDANS AND WAGONS C320 SEDANS AND WAGONS	C32 AMG SPORT SEDAN	
					CLIMATE CONTROL
●	●	●	—	—	CFC-free automatic climate control, with dual temperature controls.
—	○	—	—	●	CFC-free automatic climate control, with digital dual temperature and airflow controls, plus dashtop diffuser vent and illuminated vent adjusters. Activated charcoal filter, with smog-sensing automatic recirculation of filtered cabin air. 4-way sun sensor. REST mode can ventilate cabin or help keep cabin warmer using residual heat for up to 30 minutes after car is turned off.
●	●	●	●	●	Electrostatic dust filter. Humidity sensor. Rear-cabin air vents.
●	●	●	●	●	Tunnel mode offers one-touch closing of all windows (and sunroof or Panorama roof, if equipped) via climate-control air recirculation button.

C230 KOMPRESSOR SPORT COUPE C320 SPORT COUPE	C230 KOMPRESSOR CLASSIC SEDAN C240 CLASSIC SEDANS AND WAGONS	C230 KOMPRESSOR SPORT SEDAN C320 SPORT SEDAN	C240 ELEGANCE SEDANS AND WAGONS C320 SEDANS AND WAGONS	C32 AMG SPORT SEDAN	
					INTERIOR FEATURES
●	●	●	●	●	Multifunction steering wheel provides convenient, additional controls for commonly used functions of the audio system and optional phone, plus operation of the multifunction display (for details, see Instrumentation, at right).
●	●	●	●	●	Power windows (front only on Sport Coupes), all with one-touch express-up/down.
●	●	●	—	—	4-way (tilt/telescoping) steering column, manually adjustable.
○ ²	○ ²	—	○ ²	○ ²	4-way power steering column, position linked to driver's seat memory. Driver-programmable easy-exit feature can move driver's seat rearward and/or raise steering column when SmartKey is removed from ignition.
●	●	●	●	●	Electronic cruise control.
●	●	●	●	●	Auto-dimming rearview mirror.
●	●	●	●	●	Delayed-shutoff front courtesy lamps. Dual front reading lamps.
●	●	●	●	●	Dual illuminated vanity mirrors, in sun visors.
—	—	—	●	●	Entrance lamps in front doors. Rear-cabin courtesy lamp.
●	●	●	●	●	3-position front centre armrest, with dual storage compartments. Illuminated 2-tier glovebox. Pockets in all doors. Parcel net in right front footwell. Retractable dual front cupholder.
—	—	—	●	●	Magazine pockets on both front seatbacks.
—	●	●	●	●	Rear centre armrest, with slide-out dual cupholder.
●	●	●	●	●	Illuminated, carpeted cargo area with tie-down hooks (dual cargo-area lamps on Wagons).
●	—	—	—	—	Removable rigid cargo cover.
—	—	—	●	—	Retractable/removable vertical partition net and horizontal luggage cover. Luggage cover features one-touch retraction for more convenient loading of cargo area (Wagons only).
—	—	—	●	—	Parcel net and 12-volt power outlet in cargo-area side panel. Concealed underfloor storage, with collapsible/removable carry-crate (Wagons only).

C230 KOMPRESSOR SPORT COUPE C320 SPORT COUPE	C230 KOMPRESSOR CLASSIC SEDAN C240 CLASSIC SEDANS AND WAGONS	C230 KOMPRESSOR SPORT SEDAN C320 SPORT SEDAN	C240 ELEGANCE SEDANS AND WAGONS C320 SEDANS AND WAGONS	C32 AMG SPORT SEDAN	
					SEATING AND TRIM
●	—	—	—	—	8-way manually adjustable front seats.
—	●	●	—	—	8-way adjustable front seats, with power adjustment for height and recline.
○	○	—	○	○	10-way power front seats, each with 3-position memory. Driver's seat memory includes steering column and outside mirror positions. Memory stations are linked to each SmartKey's user-recognition feature.
●	—	—	—	●	Sport front seats.
○	○	○	○	○	Heated front seats.
●	—	—	—	—	Rear-seat easy-entry system: When a front seatback is folded, the entire seat moves up and forward for easier access to the rear cabin. Seat returns to original position when seatback is returned upright.
●	○	○	○	○	60/40-split folding rear seats (standard on Wagons; includes centre-armrest pass-through on Sedans).
—	○	○	●	—	Cloth upholstery on seats and door trim.
—	—	—	—	—	Leather front seating inserts with M-B Tex trim. M-B Tex rear-seat upholstery.
—	—	—	—	●	AMG-design Charcoal or two-tone leather upholstery. AMG-design sport steering wheel and shift knob.
○	—	—	—	—	Leather-trimmed 3-spoke sport steering wheel with raised thumbgrips. Leather-trimmed sport shift knob. Rubber-studded aluminium pedals.
—	—	—	—	●	Leather-trimmed 4-spoke steering wheel and shift knob.
●	—	—	—	—	Patterned aluminium trim on dash and console.
—	—	—	—	—	Hand-polished Calyptus wood trim on dash and console.
—	—	—	—	—	Hand-polished Laurel wood trim on doors, dash and console.
—	—	—	●	—	Textured aluminium trim on doors, dash and console.

C-Class optional equipment

C230 KOMPRESSOR SPORT COUPE C320 SPORT COUPE	C230 KOMPRESSOR CLASSIC SEDAN C240 CLASSIC SEDANS AND WAGONS	C230 KOMPRESSOR SPORT SEDAN C320 SPORT SEDAN	C240 ELEGANCE SEDANS AND WAGONS C320 SEDANS AND WAGONS	C32 AMG SPORT SEDAN	AUDIO AND COMMUNICATIONS
●●	●●	●●	●●	●●	6-speaker audio system, with automatic speed-sensitive volume adjustment.
●●	●●	●●	●●	●●	AM/FM stereo/weatherband radio with scan and dual-sensitivity seek tuning, plus a concealed autoreverse cassette player with music search feature.
●●	●●	●●	●●	●●	In-dash audio system operating panel integrates controls and displays for the radio, cassette player, optional glovebox-mounted 6-disc CD changer and optional portable digital telephone.
●●	●●	●●	●●	●●	Fibre-optic network offers precise, high-speed communication among components. Factory preparation for optional CD changer and cellular phone, using fibre-optic network.
INSTRUMENTATION					
●●	●●	●●	●●	●●	Electronic analogue speedometer, tachometer and fuel gauge.
—	—	—	—	—	Silver-accented AMG-design instrument cluster.
●●	●●	●●	●●	●●	Multifunction display in speedometer face can be scrolled via steering-wheel controls to operate and display various menus and vehicle features: Odometer, resettable trip meter and outside temperature indicator. Engine coolant temperature, digital speedometer, Flexible Service System, and engine oil-level check. Radio station, cassette player, COMAND CD player (optional)/6-CD changer (optional). Navigation system route guidance (optional). Reminder and malfunction messages. Driver-programmable settings for instrument cluster, lighting, vehicle and convenience features. Trip computer (elapsed time, fuel consumption, distance to empty). Cellular phone book (optional).
●●	●●	●●	●●	●●	Digital display for clock and Touch Shift gear/mode selection (for automatic transmission).
●●	●●	●●	●●	●●	Flexible Service System calculates and displays distance to next basic maintenance service based on actual driving conditions, some indicators of oil condition, engine loads, rpm and operating temperatures.
●●	●●	●●	●●	●●	Audible reminders to release parking brake, switch off headlamps and remove key from ignition.
RESTRAINT SYSTEMS					
●●	●●	●●	●●	●●	Integrated Restraint System: Driver and front passenger are each provided with a front air bag with dual-stage inflation based on impact severity, a door-mounted side-impact air bag, and a 3-point seat belt with an Emergency Tensioning Device (ETD) and belt force limiter. ³ On Sedans and Wagons, outboard rear passengers are each provided with a door-mounted side-impact air bag and a 3-point seat belt with ETD and belt force limiter. On Sport Coupes, rear passengers are each provided with a side-panel-mounted side-impact air bag and a 3-point seat belt with ETD and belt force limiter.
—	—	●●	●●	●●	3-point seat belt for centre rear passenger.
●●	●●	●●	●●	●●	Head Protection Curtains: In a side impact exceeding a preset threshold, a multi-chamber air bag deploys to cover the side windows (excluding cargo area on Wagons) on the affected side of the car.
●●	●●	●●	●●	●●	Occupancy sensor prevents the front passenger's front and side-impact air bags from deploying if the seat is unoccupied. An ETD will not deploy if seat belt is unfastened.
●●	●●	●●	●●	●●	Universal LATCH system (Lower Anchors and Tethers for Children) at rear seating positions, as well as selectable seat-belt retractors at all passenger seating positions, to help secure child seats. ³
●●	●●	●●	●●	●●	Height-adjustable front shoulder belts. Front seat belts are attached to seat frames at both lower points. Automatically height-adjusting outboard rear shoulder belts (Sedans and Sport Coupes only).
—	—	—	●●	—	Manually height-adjustable rear shoulder belts (Wagons only).
●●	●●	●●	●●	●●	4-way adjustable front head restraints. On models equipped with power front seats, the front head restraints also power-adjust automatically for height as each seat is adjusted fore-aft.
●●	●●	●●	●●	●●	Individually retractable rear head restraints, two on Sport Coupes and three on Sedans and Wagons.
—	—	●●	●●	●●	All three rear head restraints can be remotely retracted by the driver for improved rearward vision when the rear seats are unoccupied (Sedans only).

C230 KOMPRESSOR SPORT COUPE C320 SPORT COUPE	C230 KOMPRESSOR CLASSIC SEDAN C240 CLASSIC SEDANS AND WAGONS	C230 KOMPRESSOR SPORT SEDAN C320 SPORT SEDAN	C240 ELEGANCE SEDANS AND WAGONS C320 SEDANS AND WAGONS	C32 AMG SPORT SEDAN	OPTIONAL EQUIPMENT
○	○	●	○	●	Driver-adaptive electronic 5-speed automatic transmission with Touch Shift (standard on C320 Wagon and 4MATIC models).
○	○	○	○	○	Power tilt/sliding tinted glass sunroof with one-touch express-open/close.
○	—	—	—	—	Panorama tinted glass roof, including power tilt/sliding panel with express-open and dual power sunshades.
○	○	○	○	○	Bi-Xenon High Intensity Discharge projector low-beam and high-beam headlamps with heated washers.
○	○	○	○	○	Heated headlamp washers.
○	○	○	○	○	Rain-sensing automatic intermittent windshield wipers.
○	○	○	○	○	Automatic antitheft alarm system, with towaway protection and remote panic feature.
—	○	○	○	○	Power rear-window sunshade with one-touch express-up/down (Sedans only).
○	○	—	○	●	10-way power front seats, each with 3-position memory. 4-way power steering column. Driver's seat memory includes positions of steering column and side mirrors. Driver-programmable easy-exit feature can raise steering column and/or move driver's seat rearward when SmartKey is removed from ignition. Parking-assist right-side mirror can be programmed to tilt down upon shifting to Reverse.
○	○	○	○	○	Heated front seats.
—	—	—	○	—	Multicontour driver's seat, with pneumatic side bolsters, dual lumbar supports, and thigh support.
●	○	○	○	○	60/40-split folding rear seats (standard on Wagons; includes centre-armrest pass-through on Sedans).
—	○	○	○	○	Ski sack in rear centre-armrest pass-through (Sedans).
—	○	○	●	—	Leather front seating inserts.
○	—	○	○	○	Premium leather upholstery on all seat surfaces plus head restraints and door trim inserts.
—	○	—	○	●	CFC-free automatic climate control, with digital dual temperature and airflow controls, plus dashtop diffuser vent and illuminated vent adjusters. Activated charcoal filter, with smog-sensing automatic recirculation of filtered cabin air. 4-way sun sensor.
○	○	○	○	○	Bose® sound system with 10 speakers (8 on Sport Coupes), including a dash-mounted centre fill speaker and a 230-mm Nd® Neodymium Iron Boron high-efficiency woofer. Bose AudioPilot™ digital processing helps compensate for unwanted ambient noise with virtually no perceived change in audio volume.
○	○	○	○	○	Integrated 6-disc CD changer, mounted in glovebox.
○	○	○	○	○	COMAND integrated navigation system, radio and single-CD player/CD-ROM drive. In-dash navigation system uses GPS satellites to determine the current location of your car, and map databases on CD-ROM. ⁴
○	○	○	○	○	Tele Aid uses Global Positioning System (GPS) satellites to determine the current location of your car, plus a cellular link to provide 24-hour contact with Mercedes-Benz for emergency aid (SOS button), information (i-button) or Roadside Assistance (wrench button). Automatic Collision Notification engages SOS function if an air bag or Emergency Tensioning Device (ETD) deploys. Tele Aid also includes Automatic Alarm Notification (which alerts Mercedes-Benz to contact you if the antitheft alarm is set off), stolen vehicle tracking, and remote keyless unlocking service. ⁵
○	○	○	○	○	Integrated Motorola V60i™ tri-band digital portable telephone.
○	○	○	○	○	Integrated Motorola V60i tri-band digital portable telephone, with voice control system for operation of commonly used telephone and audio system features.
○	○	○	○	○	Metallic paint.
○	●	—	—	—	Evolution Package: Four 17" 7-spoke alloy wheels with 225/45ZR17 high-performance tires. ⁶ Colour-keyed exterior door handles. Enlarged, polished stainless-steel exhaust tip. Leather-trimmed 3-spoke sport steering wheel with raised thumbgrips. Leather-covered sport shift knob (with short-throw shifter for manual transmission). Rubber-studded aluminium pedals. Patterned aluminium door sill appliques.

1 Available as part of Evolution Package. See listing above. 2 Requires memory system, which is optional on Sport Coupes, C230 Kompressor Sport Sedan, and C240 *Elegance* models. 3 **WARNING:** THE FORCES OF A DEPLOYING AIR BAG CAN CAUSE SERIOUS OR FATAL INJURY TO A CHILD UNDER AGE 13. THE SAFEST SEATING POSITION FOR YOUR CHILD IS IN THE REAR SEAT, BELTED INTO AN APPROPRIATE, PROPERLY INSTALLED CHILD SEAT, OR CORRECTLY WEARING A SEAT BELT IF TOO LARGE FOR A CHILD SEAT. A CHILD UNDER 13 MUST NOT USE THE FRONT SEAT UNLESS THE CHILD IS BELTED INTO AN APPROPRIATE, PROPERLY INSTALLED **BABYSMART-COMPATIBLE** CHILD SEAT. A CHILD UNDER 13 WHO IS TOO LARGE FOR A CHILD SEAT MUST NOT USE THE FRONT SEAT. SEE OPERATOR'S MANUAL FOR ADDITIONAL WARNINGS AND INFORMATION ON AIR BAGS, SEAT BELTS AND CHILD SEATS. At time of press, the toddler seat (for children 9–18 kg) is not approved for use in Canada. 4 Option deletes standard cassette player and dash pocket. CD-ROM maps do not cover all areas nor all routes within an area. One regional CD-ROM is included with vehicle. 5 First year's monitoring is provided at no cost with subscription. Subscription is required for service to be active. Tele Aid operates only where cellular and GPS coverage are available. Owner must authorize stolen vehicle tracking and file a police report. 6 Z-rated tires are optimized for performance driving and may provide reduced ride comfort, increased tire noise, substantially increased treadwear and greater susceptibility to damage compared with H-rated tires.




Mercedes-Benz

Mercedes-Benz Canada Inc.
849 Eglinton Avenue East
Toronto, Ontario M4G 2L5
1-800-387-0100
www.mercedes-benz.ca

Printed in Canada
© 2003 Mercedes-Benz Canada Inc.
A DaimlerChrysler Company
Marketing Communications
MBC-03-513-50

All illustrations and specifications contained in this brochure are based on the latest product information available at the time of publication. Mercedes-Benz reserves the right to make changes at any time, without notice, in colours, materials, equipment, specifications and models. Any variations in colours shown are due to reproduction variations of the printing process. Illustrations may include test situations. Some vehicles may be shown with non-Canadian equipment. Some vehicles are shown with optional equipment.

HomeLink® is a registered trademark of Prince, a Johnson Controls Company.

 In an effort to minimize the environmental impact of this brochure, Mercedes-Benz uses a recycled #1 grade coated paper that is guaranteed in writing to contain a minimum of 10% post-consumer waste.

