

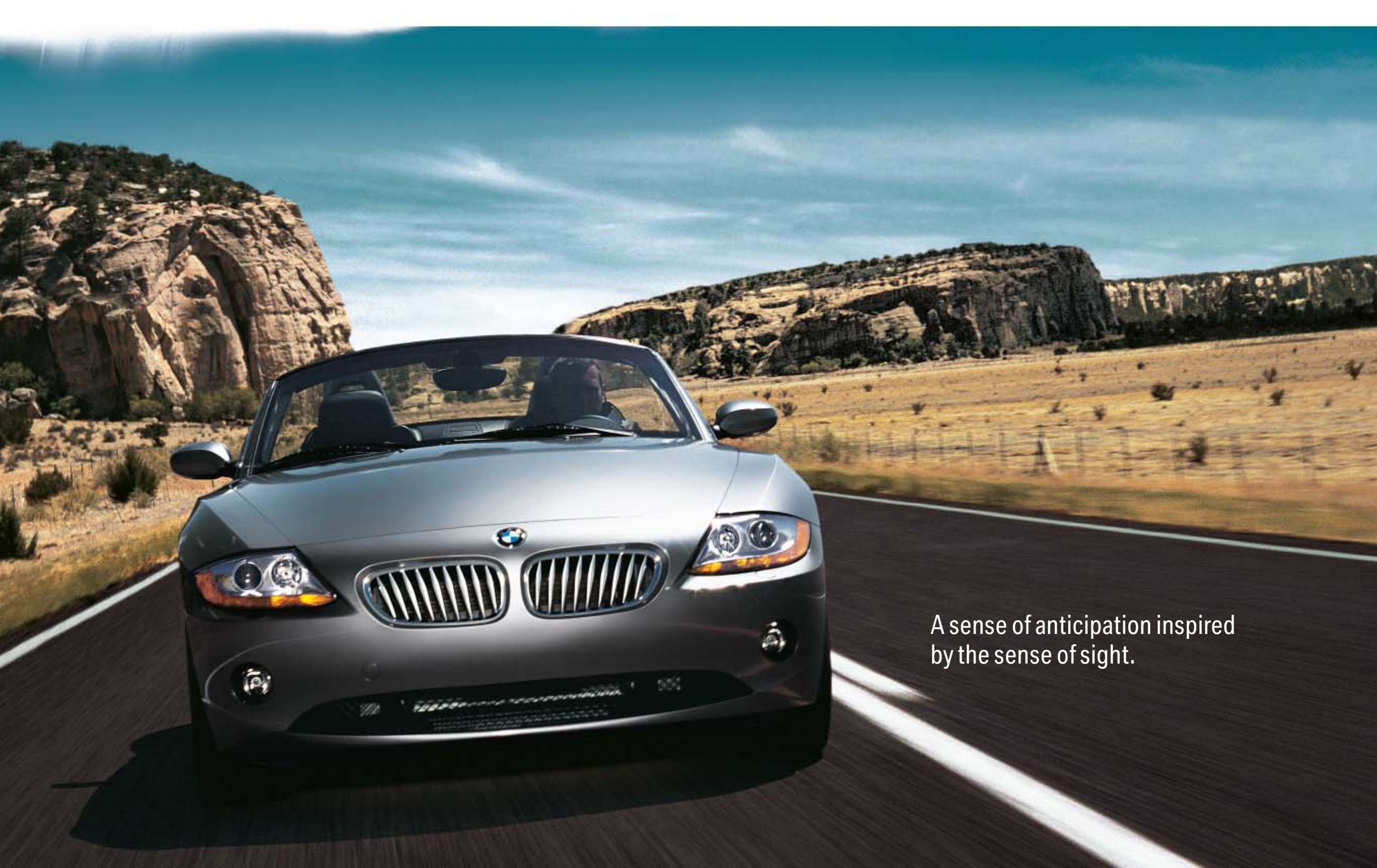
The
BMW Z4 Roadster



Z4 2.5i
Z4 3.0i

The Ultimate
Driving Experience™





A sense of anticipation inspired
by the sense of sight.

The BMW Z4 Roadster. Ignite your senses.



Once experienced, never forgotten.





At your service.

Equipment | Exterior



■ **Kidney grille with chrome surround** and matte graphite kidney slats. (On the Z4 2.5i the kidney slats are black.)



■ **Foglights** in halogen free-form technology are integrated into the front air dam to ensure additional visibility and safety in bad weather or poor visibility.



■ **Xenon headlights** for low and high beam with dynamic headlight range control ensure better illumination of the road ahead and to the side, in bad weather or in poor visibility. Xenon headlights with ellipsoid technology offer a very high standard of light intensity and a very smooth and consistent spread of light on the road.



■ **Indicator light in front side panel:** integrated into the BMW roundel.



□ **Headlight washer system** provides automatic cleaning in parallel with the windshield wipers when the headlights are on, thereby enhancing the headlight illumination of the road ahead in all weather conditions.



■ **Glass rear window, heated:** scratch-proof rear window ensures optimal vision to the rear at all times.

Equipment | Exterior



■ **Manual softtop operation:** central lock for single-handed operation. (Standard on Z4 2.5i.)

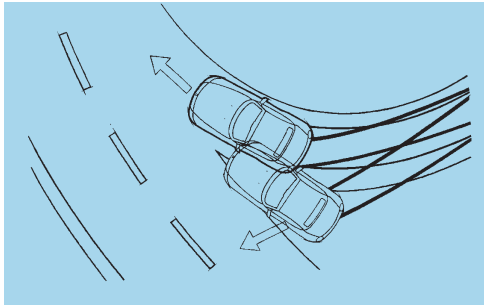
□ **Fully automatic softtop operation:** at the touch of a button the softtop opens/closes in approximately 10 seconds the softtop can also be operated via remote control. (Standard on Z4 3.0i.)



□ The **wind deflector** reduces drafts and isolated turbulence in the shoulder and neck region; consists of two panes securely fitted into the roll bars and a frame-based net spanning between them. If the net is not required, it can be stored in a special storage rack in the luggage compartment. Please see your local BMW Retailer for complete details.



□ **Hardtop** is easily installed, turning your roadster into a sleek coupé. Perfect for hot or cold weather; made to match the exterior colour of your roadster. Please see your local BMW Retailer for complete details.



■ **Dynamic Stability Control (DSC)** including Dynamic Traction Control (DTC) mode, Cornering Brake Control (CBC) and Dynamic Brake Control (DBC); DSC recognizes a tendency to skid before it even occurs and stabilizes the vehicle within a fraction of a second. The DTC mode subfunction allows an increased wheel slip up to a predetermined limit, in order to optimize acceleration in exceptional driving situations. The traction mode is activated by briefly pressing the DTC button.



■ **Star Spoke alloy wheels** (with performance run-flat tires) - Style 102, 16 x 7.0, 225/50R-16. Tires not recommended for winter use. (Standard on Z4 2.5i.)



■ **Double Spoke alloy wheels** (with performance run-flat tires) - Style 103, 17 x 7.0, 225/45R-17. Tires not recommended for winter use. (Standard on Z4 3.0i.)



□ **Turbine alloy wheels** (with performance run-flat tires) - Style 106, 17 x 8.0, 225/45R-17. Tires not recommended for winter use. (Optional on Z4 2.5i.)



□ **Ellipsoid alloy wheels** (with performance run-flat tires) - Style 107, 18 x 8.0, front, 225/40R-18; 18 x 8.5, rear, 255/35R-18. Tires not recommended for winter use. (Optional on Z4 3.0i.)



□ **Star Spoke bolted wheels** (with performance run-flat tires) - Style 108, 18 x 8.0, front, 225/40R-18; 18 x 8.5, rear, 255/35R-18. Tires not recommended for winter use. (Optional on Z4 3.0i.)

Standard Equipment | Optional Equipment

Safety	Z4 2.5i	Z4 3.0i
Airbags:		
– Driver and passenger Impact-Dependent (ID) airbag system; seat occupancy detector for passenger airbag	■	■
– Knee airbags for driver and passenger	■	■
– Supplemental Restraint System (SRS) with “smart” dual-threshold, dual-stage deployment and sensor to help prevent unnecessary passenger’s airbag deployment	■	■
– Side airbags for driver and passenger	■	■
Adaptive Brakelights		
Alarm system with remote control	□	□
Anti-lock Braking System (ABS)	■	■
Auto-dimming rearview and exterior mirrors	□	□
Battery Safety Terminal (BST)	■	■
Brakes:		
– Disc brakes, front, inner vented	■	■
– Disc brakes, rear inner vented (Z4 2.5i: solid disc)	■	■
Bumpers with aluminum impact absorbers front and rear, fully regenerating from impacts of up to 4 km/h; deformation units at the front absorb impacts up to 15 km/h	■	■
Crash sensor (incl. fuel cutoff, lights on, door unlock)	■	■
Central locking locks doors, trunk lid, fuel filler cap, storage compartment at the back between the seats	■	■
Dynamic Brake Control (DBC)	■	■
Dynamic Stability Control (DSC) incl. Dynamic Traction Control (DTC)	■	■
Electronic Brake-force Distribution (EBD)	■	■
Emergency trunk lock release	■	■
Foglights	■	■
High-pressure headlight cleaning system	□	□
Indicator light in the front side panel (in white), integrated into the BMW roundel	■	■
Rollover safety system	■	■
Run-flat tires with Tire Pressure Warning (TPW)	■	■
Seat-integrated front safety belts , with automatic pre-tensioners and force limiters	■	■
Side impact protection door reinforcement	■	■
Third brakelight , integrated into trunk	■	■
Xenon headlights	■	■
Engine		
2.5-litre, 184 hp dual overhead cam (DOHC), 24-valve in-line six-cylinder engine	■	–
3.0-litre, 225 hp dual overhead cam (DOHC), 24-valve in-line six-cylinder engine	–	■
Alloy cylinder head	■	■
Alloy engine	■	■
Digital Motor Electronics (DME)	■	■
Double-VANOS (steplessly variable valve timing)	■	■
Electronically controlled engine cooling	■	■
Fully electronic “drive-by-wire” throttle system	■	■

Standard Equipment | Optional Equipment

Engine (continued)	Z4 2.5i	Z4 3.0i
Ignition distribution, static	■	■
On-board diagnosis	■	■
Selective cylinder knock control	■	■
Three-way catalytic converter, heated lambda sensors, activated carbon filter, controlled tank purge	■	■
Twin exhaust pipe	■	■
Valve clearance compensation, hydraulic	■	■
Transmission/Suspension		
5-speed manual transmission	■	–
6-speed manual transmission	–	■
6-speed Sequential Manual Gearbox (SMG)	–	□
5-speed STEPTRONIC 3-mode (automatic/sport automatic/clutchless manual) transmission with Adaptive Transmission Control (ATC)	□	□
Anti-roll bar, front and rear	■	■
Dynamic Driving Control with Sport Mode	□	□
Electromechanical Power Steering (EPS)	■	■
SERVOTRONIC	■	■
Single-joint spring-strut front axle/Central arm rear axle	■	■
Interior Features		
Air conditioning, manual with microfilter	■	■
Automatic Climate Control includes Automatic Air Recirculation (AAR), which is activated when a sensor detects certain pollutants in the outside air.	–	□
Central softtop locking, integrated in the front centre of the softtop	■	■
Courtesy light, front centre with time delay function	■	■
Cruise control	■	■
Cupholders	■	■
Electric window lifts, central switch incl. one-touch open/close for driver and passenger	■	■
Gear lever and handbrake lever cover in leather	■	■
Heat-insulation glass, green, front and side windows	■	■
Interior Trim:		
– Brushed Aluminum	■	■
– Graphite	■	–
– Poplar Light	□	□
Locking illuminated glovebox	■	■
Luggage compartment, load capacity 240 to 260 litres	■	■
On-board computer	■	■
Radio/Audio:		
– 6-disc CD Changer	□	□
– BMW Business CD, with MP3 capability	■	■
– HiFi 10-speaker Sound System, incl. 2 subwoofers	■	■
– HiFi Sound System with Digital Sound Processing (DSP), incl. 2 subwoofers with Carver technology	□	□
Remote control for central locking	■	■

Standard Equipment | Optional Equipment

	Z4 2.5i	Z4 3.0i
Interior Features		
Seat Comfort:		
– Electric seat adjustment, with memory function for driver's seat	<input type="checkbox"/>	<input type="checkbox"/>
– Seat heating for driver and passenger	<input type="checkbox"/>	<input checked="" type="checkbox"/>
– Sport seats for driver and passenger	<input checked="" type="checkbox"/>	<input checked="" type="checkbox"/>
Sport steering wheel in leather	<input checked="" type="checkbox"/>	<input checked="" type="checkbox"/>
Steering wheel column , manually adjustable for reach and height	<input checked="" type="checkbox"/>	<input checked="" type="checkbox"/>
Storage compartment between the seats (approx. 8 L) can be locked via central locking system; storage compartment behind the seats (partially decreased space if CD Changer or Navigation System is installed)	<input checked="" type="checkbox"/>	<input checked="" type="checkbox"/>
Sun visors , with vanity mirror incl. slide covers, for driver and front passenger	<input checked="" type="checkbox"/>	<input checked="" type="checkbox"/>
Telephone and BMW Assist preparation with Bluetooth technology ; incl. one year of BMW Assist Safety and Security Services	<input type="checkbox"/>	<input type="checkbox"/>
Telephone prewire	<input type="checkbox"/>	<input type="checkbox"/>
Tool kit (integrated into the battery well)	<input checked="" type="checkbox"/>	<input checked="" type="checkbox"/>
Trunk light	<input checked="" type="checkbox"/>	<input checked="" type="checkbox"/>
Upholstery:		
– Leatherette	<input checked="" type="checkbox"/>	–
– New England Leather, extended	–	<input type="checkbox"/>
– Oregon Leather	<input type="checkbox"/>	<input checked="" type="checkbox"/>
Variable softtop storage box	<input checked="" type="checkbox"/>	<input checked="" type="checkbox"/>
Exterior Features		
Electric trunk lock release , via switch in the interior or remote control in the car key	<input checked="" type="checkbox"/>	<input checked="" type="checkbox"/>
Body-coloured bumpers and door handles	<input checked="" type="checkbox"/>	<input checked="" type="checkbox"/>
Glass rear window , heated	<input checked="" type="checkbox"/>	<input checked="" type="checkbox"/>
Hardtop	<input type="checkbox"/>	<input type="checkbox"/>
Hardtop mount	<input checked="" type="checkbox"/>	<input checked="" type="checkbox"/>
Headlight surrounds , black	<input checked="" type="checkbox"/>	–
Headlight surrounds , matte chrome	–	<input checked="" type="checkbox"/>
Metallic paint	<input checked="" type="checkbox"/>	<input checked="" type="checkbox"/>
Front chrome grille , with black kidney slats	<input checked="" type="checkbox"/>	–
Front chrome grille , with matte graphite kidney slats	–	<input checked="" type="checkbox"/>
Power folding mirrors	–	<input type="checkbox"/>
Rain sensor , with automatic headlights	<input checked="" type="checkbox"/>	<input checked="" type="checkbox"/>
Side mirrors in body colour , electrically adjustable, aspheric	<input checked="" type="checkbox"/>	<input checked="" type="checkbox"/>
Softtop:¹		
– Beige	<input type="checkbox"/>	<input type="checkbox"/>
– Black	<input checked="" type="checkbox"/>	<input checked="" type="checkbox"/>
– Grey	<input type="checkbox"/>	<input type="checkbox"/>
Softtop operation:		
– Manual single-hand operation	<input checked="" type="checkbox"/>	–
– Fully automatic	<input type="checkbox"/>	<input checked="" type="checkbox"/>
Wheels:		
– Star Spoke alloy wheels (with performance run-flat tires) - Style 102, 16 x 7.0, 225/50R-16	<input checked="" type="checkbox"/>	–
– Double Spoke alloy wheels (with performance run-flat tires) - Style 103, 17 x 7.0, 225/45R-17	–	<input checked="" type="checkbox"/>
– Turbine alloy wheels (with performance run-flat tires) - Style 106, 17 x 8.0, 225/45R-17	<input type="checkbox"/>	–
– Ellipsoid alloy wheels (with performance run-flat tires) - Style 107, 18 x 8.0, front, 225/40R-18; 18 x 8.5, rear, 255/35R-18	–	<input type="checkbox"/>
– Star Spoke bolted alloy wheels (with performance run-flat tires) - Style 108, 18 x 8.0, front, 225/40R-18; 18 x 8.5, rear, 255/35R-18	–	<input type="checkbox"/>
White turn signal indicator lenses including third brakelight	<input checked="" type="checkbox"/>	<input checked="" type="checkbox"/>

¹Please see your local BMW Retailer for details.

Standard Equipment | Optional Equipment

Exterior Features (continued)	Z4 2.5i	Z4 3.0i
Wind deflector	<input type="checkbox"/>	<input type="checkbox"/>
Windshield with green stripe	■	■
Windshield washer nozzles, heated, incl. heated exterior mirrors	■	■
Navigation Package		
BMW On-Board Navigation system; Canada/USA Navigation DVD	<input type="checkbox"/>	<input type="checkbox"/>
Premium Package		
Auto-dimming rearview mirror and exterior mirrors; Automatic climate control; Electric seats with driver memory; HiFi Professional Sound System with DSP; Multi-function steering wheel; Power folding mirrors; Wind deflector	—	<input type="checkbox"/>
Electric seats with driver memory, Heated Seats, HiFi Sound System with DSP, Multi-function steering wheel	<input type="checkbox"/>	—
Sport Package		
Dynamic Driving Control, Turbine alloy wheels (with performance run-flat tires) - Style 106, 17 x 8.0, 225/45R-17	<input type="checkbox"/>	—
Dynamic Driving Control, Ellipsoid alloy wheels (with performance run-flat tires) - Style 107, 18 x 8.0, front, 225/40R-18; 18 x 8.5, rear, 255/35R-18	—	<input type="checkbox"/>

Technical Data

Weight¹		Z4 2.5i	Z4 3.0i
Curb weight	kg	1330 (1360)	1360 (1380)
Weight distribution, front/rear			
Manual transmission	%	50.2/49.8	50.4/49.6
Automatic transmission	%	50.5/49.5	50.7/49.3
Max. permissible weight	kg	1580 (1610)	1610 (1630)
Payload	kg	250	250
Permitted axle load, front/rear	kg	780/835	790/845
Engine			
Litre/type		2.5/in-line 6	3.0/in-line 6
Displacement	cm ³	2494	2979
Bore/stroke	mm	84.0/75.0	84.0/89.6
Max. output	hp/rpm	184/6000	225/5900
Max. torque	lb-ft/rpm	175/3500	214/3500
Compression ratio	:1	10.5	10.2
Transmission			
Drive configuration		Rear	Rear
Transmission type		5-M(5-A)	6-M(5-A)
Standard transmission ratio	I/II:1	4.23/2.52 (3.67/2.00)	4.35/2.50 (3.67/2.00)
	III/IV:1	1.66/1.22 (1.41/1.00)	1.66/1.24 (1.41/1.00)
	V/VI/R:1	1.00/-/4.04 (0.74/-/4.10)	1.00/0.85/3.93 (0.74/-/4.10)
Final drive ratio	:1	3.46(3.64)	3.07(3.46)
Brakes			
Braking system		4-channel ABS	4-channel ABS
Brake type, front/rear		ventilated/solid disc	ventilated/ventilated disc
Brake diameter, front/rear		286/280	300/294
Performance			
Drag coefficient	C _d	0.35	0.35
Top speed ²	km/h	235 (227)	250 (244)
Acceleration 0 – 100 km/h	sec	7.6 (7.7)	6.3 (6.4)

Figures in () apply to vehicles with automatic transmission.

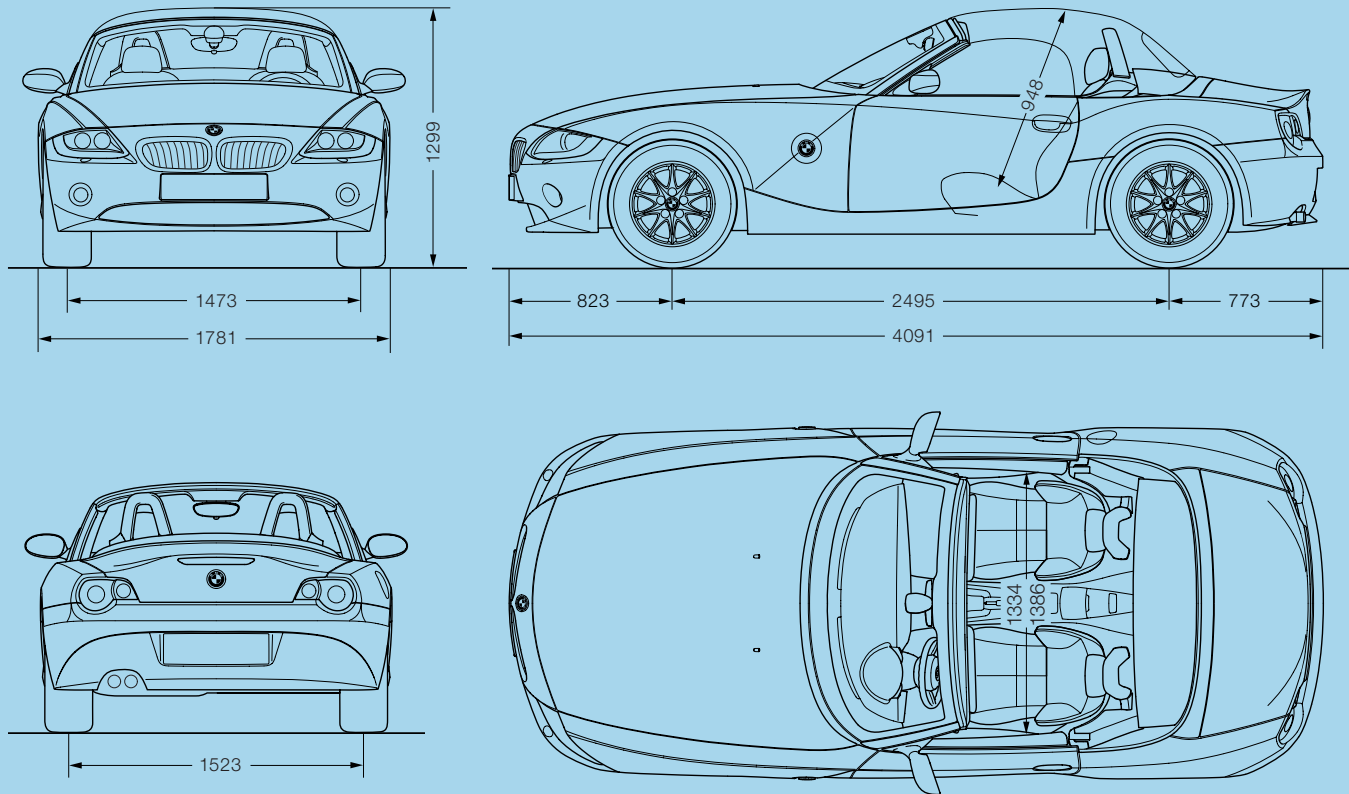
Technical Data

Wheels

	Z4 2.5i	Z4 3.0i
Tire size	225/50 R-16	225/45 R-17
Wheel size	16 x 7.0	17 x 7.0
Material	Light alloy	Light alloy

Consumption³

City	L/100 km	11.7 (11.4)	11.4 (12.2)
Highway	L/100 km	7.8 (7.7)	7.4 (8.0)
Tank capacity, approx.	L	55	55
Fuel grade		Premium unleaded	Premium unleaded



All dimensions in the technical drawings are given in millimetres. Luggage capacity up to 260 litres.

¹ Figures are based on a 90% fill-up, driver's weight of 68 kg and 7 kg of luggage. Curb weight applies to vehicles with standard equipment. Optional extras may increase these figures.

² Electronically limited.

³ NR-Can-estimated figures are for comparison purposes only. Your actual mileage will vary depending on speed, driving habits, trip length and driving conditions; actual mileage will most likely be lower.

Exclusive Canadian importer and distributor – BMW Canada Inc., Whitby, Ontario L1N 6K9. All illustrations and specifications are based on product information available at the time of printing. BMW reserves the right to revise specifications at any time, without notice. BMW may, subject to legal compliance, determine the Model Year designation of its vehicles. The Model Year designation on any particular model may be longer or shorter than 12 months. Some models may be shown with optional equipment and/or options not available in Canada. Further information can be obtained from your BMW Retailer.

© 2004 BMW Group, Munich, Germany. Not to be reproduced wholly or in part without written permission of BMW Group, Munich, Germany. "BMW", the BMW logo and "The Ultimate Driving Experience" are trademarks of the BMW Group, used under licence by BMW Canada Inc.