

Honda CR-V 2005





the goods page 7

choices page 14

versatility page 8

confidence page 10

count on it page 4

room to move page 6

control page 5

attraction page 3

It's a Honda. page 12

Why CR-V?

Imagine a game where you draw a card and it tells you to go on some adventure. It could be most anything – hiking in the mountains, sandcastle building at the beach, even a scavenger hunt in the Rockies. If you drive a CR-V, it's no contest. The **versatility** and **roominess** of the CR-V puts it way out front, while typical Honda virtues of innovation and efficiency keep it there. The CR-V also gets plenty of updates in 2005 with advanced **safety** engineering for every model, and there's a handsome, leather-trimmed EX model too. Ready to play?

attraction ▶ exterior styling

It's not hard to explain the handsome, **rugged style** of the CR-V. After all, this SUV has all those Honda toughness genes through and through. And it shows in the broad, **square-shouldered stance** and angular lines. For 2005, the look gets even bolder with updated headlights, grille, taillights, bumpers, side trim and more. And for an added touch of stylishness, the CR-V EX with leather comes with body-coloured bumpers, moldings, door handles and a hard, sculpted spare tire cover.

Fresh, updated styling

Power Moonroof

Privacy glass

Alloy wheels





CR-V LX shown in Satin Silver Metallic with accessory roof rack and bicycle attachment.

160-hp, 2.4-litre, 16-valve i-VTEC™ engine

RealTime™ 4-wheel drive system

4-wheel Anti-lock Braking System

4-wheel independent suspension

count on it ▶ engine

Old Faithful could take lessons from Honda engines – their durable, reliable quality is the stuff of legends. The 2.4-litre powerplant of the CR-V is no exception. And its lightweight, aluminum alloy block and head are home to much **advanced technology**, like an i-VTEC™ valve-actuating system. It combines variable valve timing and lift, Variable Timing Control (VTC), dual overhead camshafts and 4-valves-per-cylinder to generate powerful responsiveness at all engine speeds. Transmission choices include a fun-to-shift 5-speed manual gearbox on the LX and EX, and the smooth **5-speed automatic** transmission on the EX with leather option. But no matter which model you want to go with, you'll be taking it easier on the environment because every CR-V meets the requirements of the stringent Tier 2 emissions standard.

control ▶ handling

The great thing about a 4-wheel **independent suspension** is the terrific job it can do combining precise handling with a smooth, compliant ride. The CR-V adds to that a pair of stabilizer bars to limit body roll and a rack-and-pinion steering system with variable power assist for **excellent road feel**. Four-wheel disc brakes make for smooth, consistent stops. CR-V also comes with the RealTime™ 4WD system for enhanced capability. This amazing set-up can automatically go from front-wheel drive to **grippy 4WD** the instant traction starts to get dicey. Add to that ample ground clearance for yet another dimension of freedom.



CR-V EX interior shown in Ivory Fabric (U.S. model shown.)

Cruise with a fingertip.

The standard cruise control lets you set and adjust your cruising speed from the steering wheel.



Easy open, easy close.

The power windows on all CR-V models come with an auto-up/down feature for the driver.



See what's up.

EX with Leather Option comes with a standard power moonroof and sunshade.



Fill it with sound.

Every CR-V lets you play CDs and cassettes, and tune in your favourite AM and FM stations.

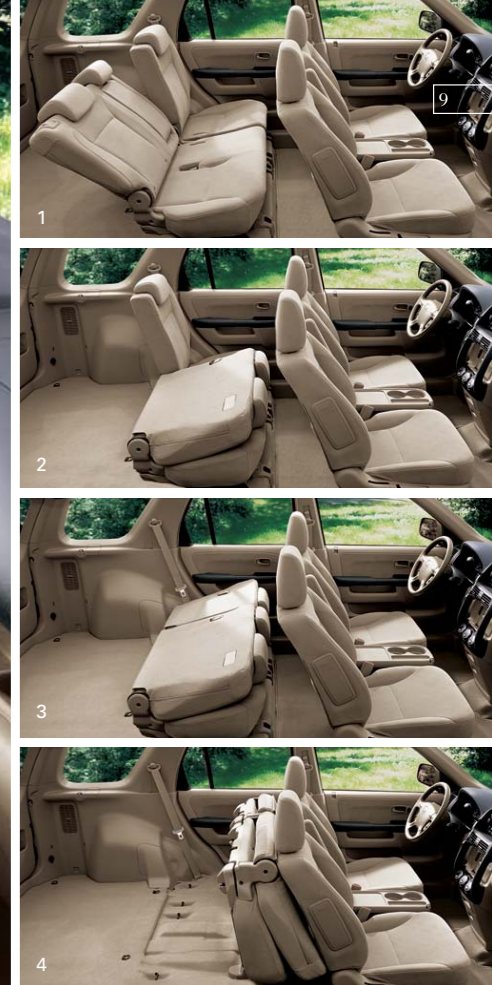


room to move ▶ interior

Honda designers are masters at making the insides of their vehicles seem bigger than the outsides. Once you've had the pleasure of enjoying the **spacious comfort** of the CR-V, you'll be inclined to agree. It starts with the easy step-in height and seating that provides a commanding view of the road. Along with lots of room, the 2005 CR-V also benefits from a stylish upgrade in materials and design. New head restraints and plush new upholstery are among the enhancements. Plus, there's the CR-V EX with Leather Option to make every adventure a little more luxurious. Along with several exterior styling cues, this **distinctive** model comes with supple leather trim, a leather-wrapped steering wheel, heated front seats and heated outside mirrors. Regardless of which model you go with, however, CR-V gives you seating for five, or more than 948 Litres of cargo space to play with.

the goods ▶ interior features

Every 2005 Honda CR-V offers an **amenity-rich** environment. Access it with the remote entry system that's integrated into the key. Settle in and enjoy air conditioning with air filtration that helps keep out dust and pollen. The oversized climate controls are easy to adjust. Power mirrors and locks are standard. The **sweet-sounding** CR-V LX audio setup is an AM/FM/CD/cassette system with four speakers, while EX models crank it up with a 6-disc in-dash CD changer, two more speakers and new steering wheel-mounted controls. And the Immobilizer Theft-Deterrent System helps keep your CR-V secure.



CR-V EX interior shown in Ivory Fabric.

versatility ▶ interior configurations

New CR-V owners can often be spotted grinning and shaking their heads – an expression of their sheer awe at this vehicle's **extraordinary functionality**. Both of the 60/40 split rear seats can adjust four ways for comfort, or stow two ways for cargo hauling.* Storage pockets and bins practically line the cabin from stem to stern. Beverage holders await their refreshments front and rear. There's a 12-volt power outlet up front, as well as one in the cargo area. The hidden waterproof storage-well adds underfloor storage. And numerous tie-down anchors help make securing your cargo a snap.

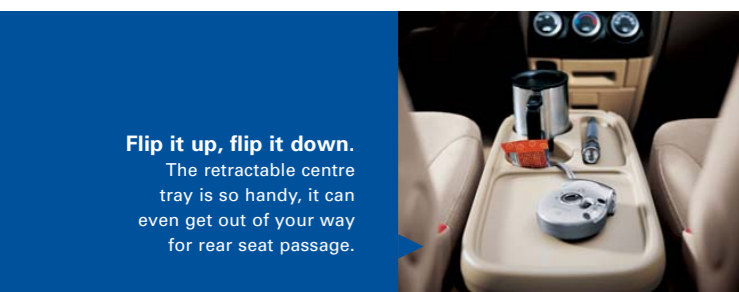
*Carrying too much cargo or improperly storing it can affect the handling, stability and operation of this vehicle. Before carrying any cargo, consult the Owner's Manual for load limits and loading guidelines.



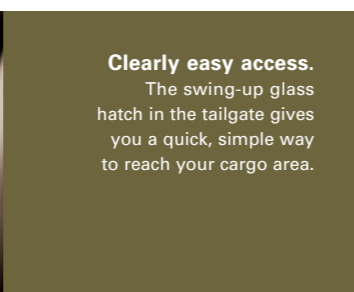
You can eat off the floor.
Pull out the storage-well cover and it grows legs and turns into a handy picnic table.

Split. Fold. And tumble.

1. The 60/40 split rear seats each can slide and recline.
2. Fold one side down and still have some company in back.
3. Imagine the possibilities with both seatbacks folded.
4. Or tumble the rear seats to open up all 948 litres of cargo space.



Flip it up, flip it down.
The retractable centre tray is so handy, it can even get out of your way for rear seat passage.



Clearly easy access.
The swing-up glass hatch in the tailgate gives you a quick, simple way to reach your cargo area.



Take four more wheels.
CR-V is so accommodating, you can load up two mountain bikes with the front wheels on.*

*Honda reminds you to properly secure items stored in the cargo area.

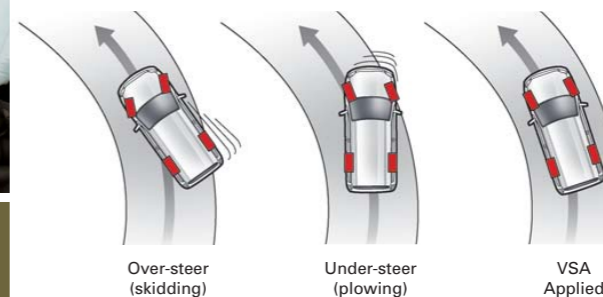


At your fingertips.
CR-V offers an amenity rich environment with oversized climate controls that are easy to adjust, even with gloves on.

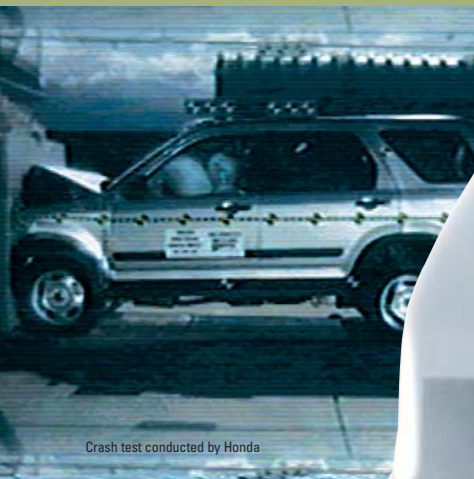
confidence ▶ safety

In applying our philosophy of **safety for everyone**, Honda engineers have equipped every 2005 CR-V model with front side airbags and all-new side curtain airbags to go with the dual-stage, dual-threshold front airbags. Every CR-V also comes with an Anti-lock Braking System (ABS) as well. And each and every new model now has the remarkable Vehicle Stability Assist (VSA) system that's designed to help control skidding. All of this is on top of the exceptional strength and rigidity of its body structure,

which helps to explain this vehicle's impressive performance in the National Highway Traffic Safety Administration's rigorous frontal- and side-impact crash-testing. CR-V has also achieved a **5-star crash test rating** – the best possible. But then again, this is familiar territory for Honda safety engineers. In fact, Honda has eight models that have achieved a 5-star safety rating from the NHTSA for frontal crash tests. That's more than any other brand tested.



1 Absorbs excess energy fast.
The CR-V body structure is designed with sacrificial crush zones in both front and rear. In an impact, they serve to deform in a controlled way and absorb crash forces



Crash test conducted by Honda

2 It's easy to do the right thing.
Child seats should always be securely strapped into the back seats. So that's where you'll find the Lower Anchors and Tethers for Children system. LATCH makes it quicker and easier to install your compatible child seats in the correct way.

3 Just as rugged as it looks.
The CR-V body is designed to be a stalwart friend in tough times. The use of numerous cross-members, high-tensile steel and bracing helps prevent cabin deformation.

4 Airbags that do what's called for.
The front airbags in the CR-V can deploy at one of two rates and thresholds, depending upon crash severity and seatbelt use. To add an extra layer of head protection, all 2005 models come with side curtain airbags for window-adjacent occupants. They deploy on the affected side when sensors detect a sufficient collision.
Honda reminds you and your passengers to always buckle up.

5 A model of stability.
Every 2005 CR-V comes equipped with Honda's sophisticated Vehicle Stability Assist system. VSA is designed to detect discrepancies between the driver's input and what's happening out on the road. If the system senses the onset of over-steer (skidding) or under-steer (plowing), it can apply braking to individual wheels and/or reduce engine power to help restore you to your intended path.

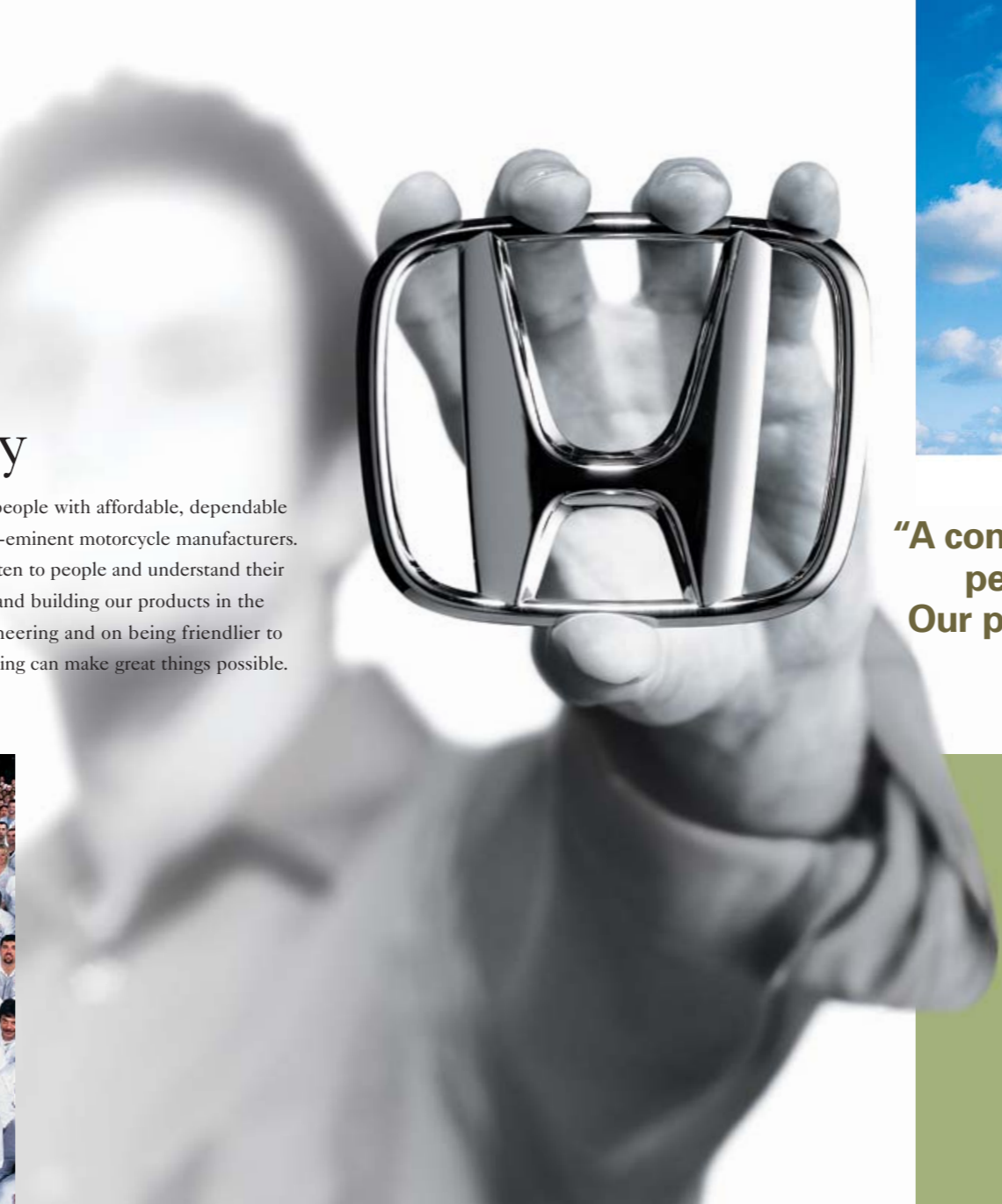
6 Keep those wheels turning.
All CR-V models also come standard with ABS that can sense wheel lockup during hard braking and then pulse the brake-line pressure to help you retain steering control.





It's a Honda ▶ a success story

Soichiro Honda founded the Honda Motor Company in 1948 to provide people with affordable, dependable transportation. Within a few short years, Honda was one of the world's pre-eminent motorcycle manufacturers. At Honda, we believe that the first step in making a good product is to listen to people and understand their needs. This core value is reflected in everything we do. From designing and building our products in the markets where they're used, to the importance we place on safety engineering and on being friendlier to the environment. In short, it's our belief that the power of ingenious thinking can make great things possible.



What makes a Honda a Honda? ▶

That's easy. The answer is right here in this country, where more than 4,300 world-class associates and over 60 Canadian suppliers contribute to the making of our extraordinary vehicles. Today, we produce 390,000 vehicles per year and, since 1986, when we began manufacturing in Canada, we have produced more than 2.5 million vehicles and invested more than \$1.8 billion in the Canadian economy.



◀ Imagination unbound.

Honda innovation is reestablishing the boundaries in aerospace technology with the HondaJet – a highly fuel-efficient, low-emission experimental aircraft with exceptional cabin space. And Honda's ASIMO is the world's most advanced and capable humanoid robot.



◀ Making safety for everyone.

Honda takes safety engineering to new levels with testing facilities unique to the planet. At the recently opened Honda R&D Automotive Safety Research Facility in Ohio, the world's most advanced high-resolution crash barrier helps provide unprecedented knowledge of real-world safety performance. And in Tochigi, Japan, Honda R&D engineers can crash test vehicles at a variety of speeds and impact angles in the world's first indoor all-directional crash test facility, shown here.



◀ Winning is good. Learning is better.

Honda began racing motorcycles in the 1950s and cars in the '60s. Over the years, our trophy case has become quite crowded. And all of our vehicles certainly reflect the advancements of our hard-won technology. But we believe the greatest benefit of racing is how it prepares our engineers to think creatively under pressure. So they're always ready for the next big challenge.

▼ We have a clear edge.

Since our pioneering CVCC engines of the '70s, Honda has led the way in earth-friendlier cars. Today, every Honda meets the requirements of the stringent Tier 2 emissions standard. Only Honda offers three hybrid vehicles.



And now, our advanced zero-emission FCX fuel-cell car is the first certified for commercial use in the U.S.

"A company is most clearly defined neither by its people nor by its history, but by its products. Our products will speak the truth about Honda."

Soichiro Honda, Founder,
Honda Motor Co., Ltd.

choices ▶ trim levels



Few would doubt that the Honda CR-V is a smart place to put your money. Year after year, this SUV has out-distanced just about every other vehicle in its class. No wonder IntelliChoice gave it the 2004* award for **Best Overall Value of the Year**, and The Car Book 2004 by Jack Gillis has named it **Best Bet**. It's even less surprising that CR-V owners can often be spotted grinning and shaking their heads – an expression of their sheer awe at this ever-evolving vehicle.

*©2004 The Complete Car Cost Guide™ IntelliChoice, Inc., www.intellichoice.com



CR-V LX ▼

- 160-hp, 2.4-litre, 16-valve i-VTEC™ engine
- 4-wheel disc brakes with ABS
- 60/40 split rear sliding fold & tumble seats
- Air conditioning with micron air-filtration system
- AM/FM/CD/cassette audio system
- Dual-stage, dual-threshold front airbags
- Keyless remote entry
- Power windows, mirrors and door locks
- RealTime™ 4-wheel-drive system
- Side airbags
- Side curtain airbags
- Vehicle Stability Assist (VSA)



CR-V EX ▼

- Adds to or replaces LX features:
- 16" alloy wheels
 - AM/FM Stereo with Cassette player and 6 disc in-dash CD changer with 6 speakers
 - Body-coloured, heated dual power mirrors
 - Rear privacy glass
 - Steering wheel mounted audio controls

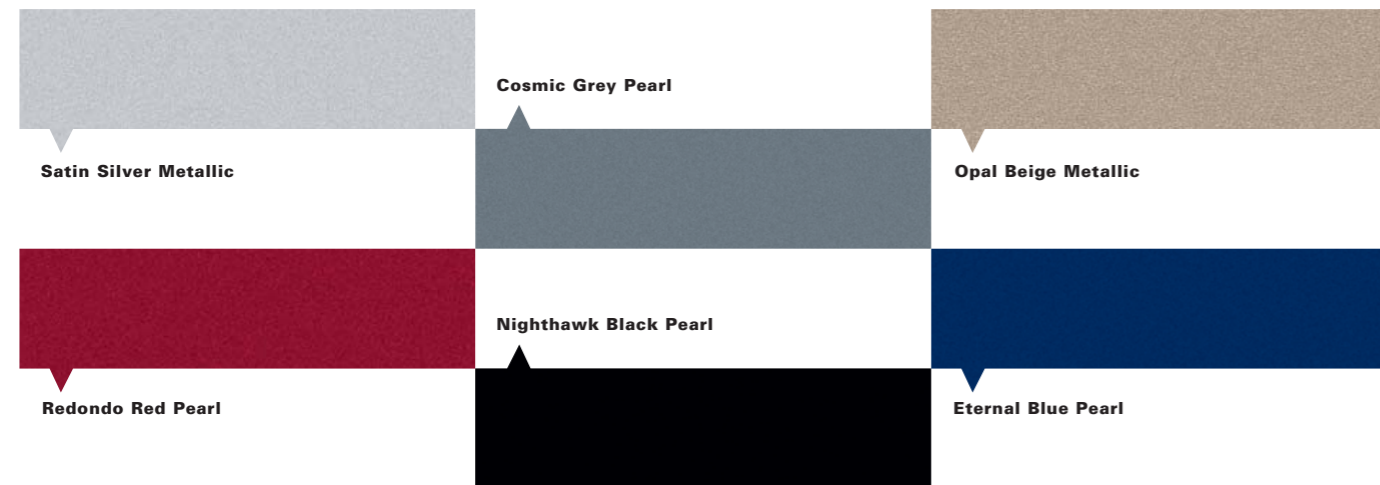


CR-V EX with leather option ▼

- Adds to or replaces EX features:
- 5-speed automatic transmission
 - Body-coloured bumpers, side molding and door handles
 - Body-coloured hard spare tire cover
 - Heated front seats
 - Leather-trimmed seating
 - Leather-wrapped steering wheel
 - Power moonroof with tilt feature

personality ▶ colours and accessories

exterior



interior



| Exterior / Interior Colors | LX | EX | EX with leather option |
|-------------------------------|----|----|------------------------|
| Eternal Blue Pearl / Black | • | • | Leather |
| Nighthawk Black Pearl / Black | • | • | Leather |
| Opal Beige Metallic / Ivory | • | • | Leather |
| Redondo Red Pearl / Ivory | • | • | Leather |
| Satin Silver Metallic / Black | • | • | Leather |
| Cosmic Grey Metallic / Black | • | • | Leather |

Get in. Stand out.

There are hundreds of Genuine Honda Accessory combinations to suit your personality, so go ahead – get in and stand out. Whether you add Fog Lights or the Metal Look Trim Kit, all Honda accessories are crafted with the same attention to detail as your CR-V. So for unparalleled quality, choose only Genuine Honda Accessories and experience a whole new level of performance. See your Dealer for full details.

Other available accessories:

- 16" Alloy Wheels
- Bike Attachment
- Fender Flare/Body Cladding Kit
- Front Bumper Trim
- Front Splash Guards
- Half Nose Mask
- Running Boards
- Security System

CR-V ▶ specifications

| ENGINE | LX | EX | EX w/Leather Option |
|---|----------|----------|---------------------|
| Type: In-Line 4-Cylinder Aluminum Alloy | • | • | • |
| Displacement (cc) | 2354 | 2354 | 2354 |
| Horsepower @ rpm (SAE net) | 160@6000 | 160@6000 | 160@6000 |
| Torque (lb.-ft @ rpm) | 162@3600 | 162@3600 | 162@3600 |
| Compression Ratio | 9.6:1 | 9.6:1 | 9.6:1 |
| Valve Train: DOHC 16-Valve i-VTEC™ with VTC | • | • | • |
| Fuel System: Programmed Fuel Injection (PGM-FI) | • | • | • |
| Ignition System: Electronic | • | • | • |

| DRIVE TRAIN | LX | EX | EX w/Leather Option |
|---|----------|----------|---------------------|
| Type: RealTime™ 4WD | • | • | • |
| Manual Transmission: 5-Speed | • | • | N/A |
| Automatic Transmission: Electronically-Controlled 5-Speed with Lock-up Torque Converter and Grade Logic Control | Optional | Optional | • |

| BODY / SUSPENSION / CHASSIS | LX | EX | EX w/Leather Option |
|---|------------------|-------------|---------------------|
| Body Type: Unit Body | • | • | • |
| Front Suspension: Independent Strut | • | • | • |
| Rear Suspension: Independent Double-Wishbone | • | • | • |
| Steering Type: Variable Power-Assisted Rack-and-Pinion | • | • | • |
| Stabilizer Bars (mm, front / rear) | 27.2 / 14.0 | 27.2 / 14.0 | 27.2 / 14.0 |
| Brakes: Power Assisted Disc (Front Ventilated / Rear Solid) | • | • | • |
| Wheels | 16" Styled Steel | 16" Alloy | 16" Alloy |
| Tires: All-Season Radials | P215/65R 16 | P215/65R 16 | P215/65R 16 |

| EXTERIOR / INTERIOR DIMENSIONS | LX | EX | EX w/Leather Option |
|--|-------------------------|-------------------------|---------------------|
| Wheelbase (mm) | 2625 | 2625 | 2625 |
| Length (mm) | 4595 | 4597 | 4817 |
| Width (mm) | 1783 | 1783 | 1783 |
| Height (mm) | 1682 | 1682 | 1682 |
| Track – Front / Rear (mm) | 1535 / 1545 | 1535 / 1545 | 1535 / 1545 |
| Curb Weight (kgs) - M.T. / A.T. | 1530 / 1560 | 1530 / 1560 | N/A / 1585 |
| Front / Rear Dimensions - Headroom (mm) | 1038 / 994 | 1038 / 994 | 989 / 994 |
| - Legroom (mm) | 1049 / 1000 | 1049 / 1000 | 1049 / 1000 |
| - Hiproom (mm) | 1385 / 1360 | 1385 / 1360 | 1385 / 1360 |
| Cargo Volume (L) | 948.6 | 948.6 | 948.6 |
| Passenger Volume (L) | 3001.6 | 3001.6 | 2925.1 |
| Fuel Capacity (L) | 58 | 58 | 58 |
| Fuel Consumption* City/HWY (L/100km) - M.T. / A.T. | 11.1 / 8.4 / 10.6 / 8.0 | 11.1 / 8.4 / 10.6 / 8.0 | N/A / 10.6 / 8.0 |

*See Dealer for latest 2005 EnerGuide published by NRCAN when available.

| SAFETY | LX | EX | EX w/Leather Option |
|---|----|----|---------------------|
| 3-Point Seatbelts in All Seating Positions | • | • | • |
| 4-Wheel Anti-lock Braking System (ABS) with Electronic Brake Distribution (EBD) | • | • | • |
| 8 km/h Impact Absorbing Bumpers | • | • | • |
| Child Proof Rear Door Locks | • | • | • |
| LATCH Child Safety Seat Anchors in Rear Outboard Positions | • | • | • |
| Driver and Front Passenger Airbags (SRS) | • | • | • |
| Driver Side Airbag (SRS) | • | • | • |
| ECU Immobilizer | • | • | • |
| Front Occupant Knee Bolster | • | • | • |
| Front Seatbelt Shoulder Height Adjustment | • | • | • |
| Passenger Side Airbag (SRS) with Occupant Position Detection System (OPDS) | • | • | • |
| Side Curtain Airbag (SRS) with Rollover Sensor | • | • | • |
| Side Impact Door Beams | • | • | • |
| Vehicle Stability Assist (VSA) | • | • | • |

| EXTERIOR FEATURES | LX | EX | EX w/Leather Option |
|--------------------------------|----|----|---------------------|
| Body-Coloured Bumpers | • | • | • |
| Body-Coloured Door Handles | • | • | • |
| Body-Coloured Side Mouldings | • | • | • |
| Body-Coloured Tailgate Garnish | • | • | • |
| Chrome Grille Surround | • | • | • |
| Front Intermittent Wipers | • | • | • |
| Fuel Cap Holder | • | • | • |
| Glass: Green Tinted | • | • | • |
| Privacy Rear Side and Hatch | • | • | • |

| | | | |
|--|-------------|-----------------------|-----------------------|
| Power Door Mirrors | • | Body-Coloured, Heated | Body-Coloured, Heated |
| Power Moonroof with Tilt Feature, Privacy Glass and Sunshade | • | • | • |
| Rear Splash Guards | • | • | • |
| Rear Window Defroster with Timer | • | • | • |
| Rear Intermittent Wiper with Washer | • | • | • |
| Side Sill Guard | • | • | • |
| Spare Tire Cover | Soft, Black | Soft, Black | Hard, Body-Coloured |
| Trailer Hitch Pre-Wire | • | • | • |
| Wheel Arch Protector: Front and Rear | • | • | • |

| INTERIOR FEATURES | LX | EX | EX w/Leather Option |
|--|----|----|---------------------|
| 4-Spoke Steering Wheel | • | • | Leather-Wrapped |
| Air Conditioning (CFC-Free) with Defrost Synchronization | • | • | • |
| AM/FM Stereo with 6 CD and Cassette Player with 6 Speakers | • | • | • |
| AM/FM Stereo with CD and Cassette Player with 4 Speakers | • | • | • |
| Audio Anti-Theft | • | • | • |
| Cruise Control | • | • | • |
| Driver and Passenger Vanity Mirror with Hard Cover | • | • | • |
| Driver Seat Height Adjustment | • | • | • |
| Floor Mats | • | • | • |
| Folding Centre Table with Dual Beverage Holder | • | • | • |
| Front Map Lights | • | • | • |
| Heated Front Seats | • | • | • |
| Illuminated Driver's Power Window Switches | • | • | • |
| Illuminated Ignition Lock | • | • | • |
| Instrument Panel Mounted Parking Brake | • | • | • |
| Keyless Remote Entry with Hatch Release Feature | • | • | • |
| Leather-Trimmed Interior | • | • | • |
| Lockable and Illuminated Glove Box | • | • | • |
| Maintenance Indicator | • | • | • |
| Micron Air-Filtration System | • | • | • |
| Outside Temperature Gauge | • | • | • |
| Power Door Locks | • | • | • |
| Power Windows with Driver's Auto Up/Down Anti-Pinch | • | • | • |
| Rear Cargo Area Light | • | • | • |
| Rear Cargo Hook | • | • | • |
| Rear Cargo Storage Well | • | • | • |
| Rear Cargo Tie Downs | • | • | • |
| Rear Centre Armrest | • | • | • |
| Rear Heater Ducts | • | • | • |
| Remote Fuel Lid Release | • | • | • |
| Removable and Folding Picnic Table | • | • | • |
| Steering Wheel Mounted Audio Controls | • | • | • |
| Sunglass Holder | • | • | • |



We're here. At Honda, assistance and support are always available. The team of trained technicians at your Honda Dealership will keep your vehicle in terrific shape. Honda accessories installed at the time your car was purchased are covered under the 3-year/60,000 km limited warranty. And if you ever need more information or assistance, feel free to call us at 1-888-9-HONDA-9.

Visit us online. For all of the latest Honda information, including our product specifications, pricing, photos and more, visit our website at [honda.ca](http://www.honda.ca/). It has everything you need to "design" your own Honda and personalize it with items from our list of quality accessories.

Quality Honda accessories give you the opportunity to fine-tune your new CR-V just how you like it. Whether you want to turn up the style, the versatility or the exclusivity, every accessory is designed and built to adhere to the strictest Honda standards. See your Dealer for full details.

Whether you buy or lease a Honda, **Honda Canada Finance Inc.** can assist you with the process. Ask your Dealer which lease or purchase plan best suits your needs.

Genuine Honda Replacement Parts are made to the same exacting standards as original Honda Components and are guaranteed by our Genuine Honda Parts Warranty.

We're ready to help. When you purchase a 2005 Honda, you automatically receive Honda Plus Roadside Assistance. This service is available for you or anyone else driving your vehicle 24-hours-a-day, 7-days a week, anywhere in Canada or the U.S. Coverage is for up to three years, unlimited mileage and includes towing, battery boost, lock-out assistance plus many other helpful services. Ask your Dealer for more information.

Make the grade with Honda. If you're a recent university or college graduate, you may be eligible for an allowance of up to \$750.00 on certain Honda models. To learn more about our Graduate Program, see your participating Honda Dealer.

©2004 Honda Canada Inc.,

715 Milner Avenue, Toronto, Ontario, Canada M1B 2K8

Remember Your Seatbelts. It's a Simple Fact of Life. Specifications, features, illustrations and equipment shown in this catalogue are based upon the latest available information at the time of publication. Although descriptions are believed to be correct, accuracy cannot be guaranteed. Honda Canada Inc. reserves the right to make changes at any time, without notice or obligation, in colours, specifications, accessories, materials and models. Some vehicles are shown with optional equipment. CR-V is a registered trademark of Honda Motor Co. Ltd.

PRINTED IN CANADA. 08/04. PRINTED ON RECYCLED PAPER.  

7555B009E



HONDA

honda.ca