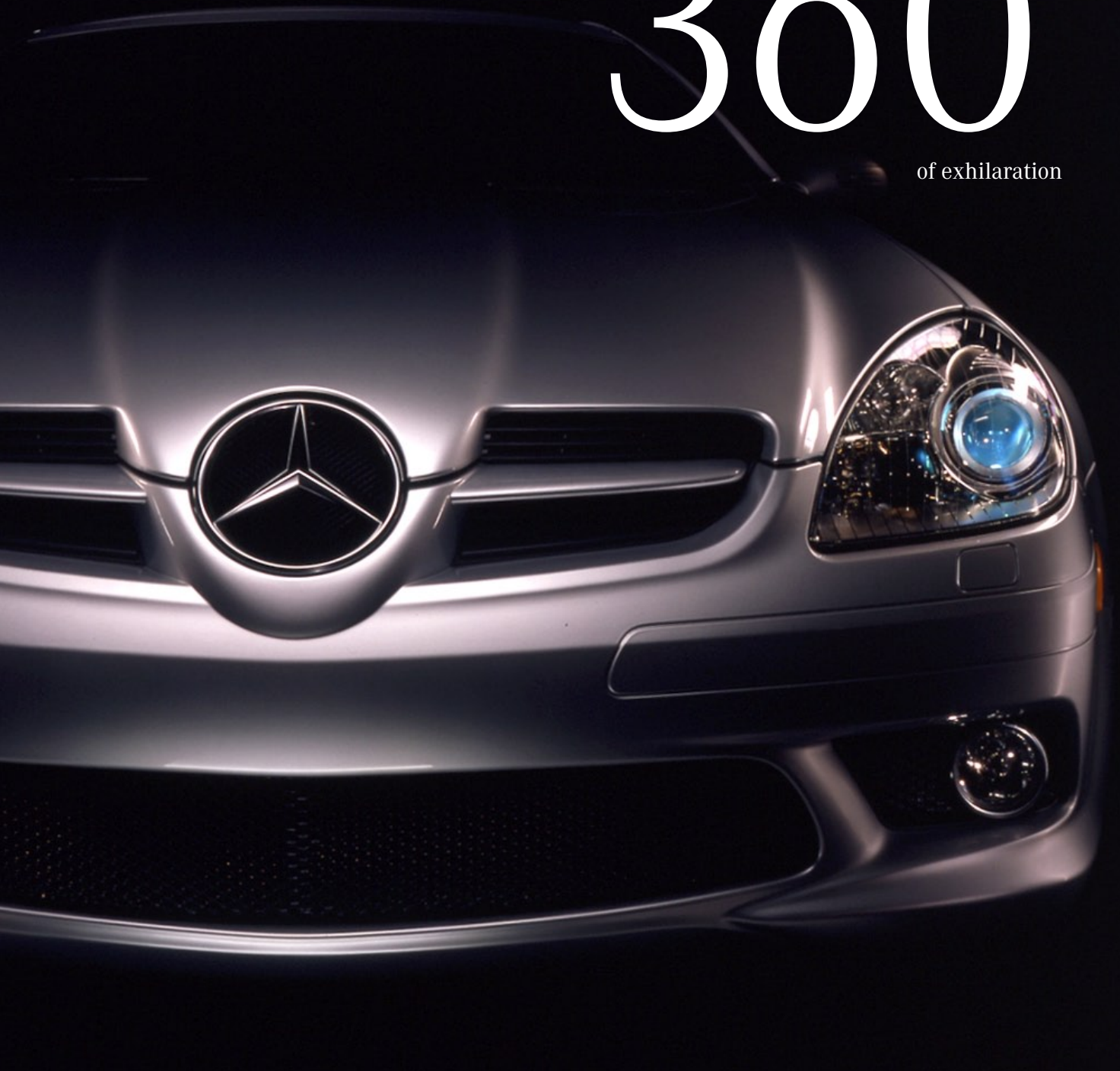


2005 Mercedes-Benz

SLK-Class SLK 350 SLK 55 AMG

360°

of exhilaration



Mercedes-Benz

200,000

There are over

words in the English language...

and yet, words escape us.

From any perspective, it's pure exhilaration. We can try to describe it to you, but ultimately it's only when you've experienced the SLK that all the words and numbers ring true. Welcome to the intense rush that is the completely new 2005 SLK.





SLK350 shown with optional Iridium Silver metallic paint and AIRSCARF.

SLK-CLASS

RETRACTABLE HARDTOP

Ooh to ahh in **22** seconds.

Even when it's not being driven, the new SLK is artistry in motion. In just 22 seconds, it converts from a seductive hardtop coupe to an open-air extrovert. And while either configuration is exciting in its own right, it's equally thrilling to watch the retractable steel roof fold itself away at the touch of a button. As the hardtop glides back, the rear window pivots through a 150° arc, allowing the top to stow more efficiently and help preserve trunk space. You can even operate the top from outside the car using the SmartKey remote.



SLK350 shown with optional Iridium Silver metallic paint and AMG Sport Package.



The SLK's visual exhilaration commences with tautly rendered bodywork that brilliantly integrates its coupe and roadster personalities. This sleek wedge shape emanates from a front end inspired by Mercedes-Benz Formula One race cars. A host of breathtaking design cues impart even more aggressive intensity, highlighted by 17" 10-spoke staggered-width alloy wheels and bold clear-lens headlamps that offer optional Bi-Xenon lighting. It's all here in the new SLK—a phenomenal performer with unforgettable presence.





0

afterthoughts.

In the SLK, form doesn't just meet function, it engages in a passionate relationship. The prominent speedometer and tachometer reside in dramatically angled tubes that add style and help reduce glare. A 3-spoke multifunction sport steering wheel puts control of numerous functions at your fingertips, while the 9-speaker audio system with in-dash CD player and digital dual-zone climate control let you create an ideal ambiance. Power window switches are seamlessly integrated into the modernistic door pulls. Sport seats with supple leather upholstery reveal Silver-painted magnesium seat frames that are light yet exceptionally strong. Intuitive seat-shaped controls adjust the optional power seats. Everything lies within reach, and begs to be touched.



5.6

seconds later, you can breathe again.



A class-leading 0-100 time¹ is only the beginning. Beyond the astounding thrust is the thrill of a heart-pounding rush every time you punch it. The breathtaking SLK 350's talents are provided by an all-new 268-hp 3.5-litre V-6 that gives 100% of its tremendous 258 lb-ft of torque at a mere 2,400 rpm and relentlessly holds it there through 5,000 rpm. The result: scalding off-the-line acceleration and immediate response throughout the rev range. Keep pushing, and its 24-valve DOHC design gives an addictive charge to the 6,500-rpm redline, yet never runs out of breath—even as you struggle to capture yours. And once you do, the new SLK will be ready to go again.

¹ With manual transmission. Stated rates of acceleration are based upon AMCI's test-track results and may vary depending upon model, environmental and road surface conditions, driving style, elevation and vehicle load.

SLK 350 shown with optional Iridium Silver metallic paint, AMG Sport Package, and Bi-Xenon headlamps with washers.





SLK 350 shown with optional Iridium Silver metallic paint and Bi-Xenon headlamps with washers.



The only **6** speed you'll ever want.

The only **7** speed you can get.

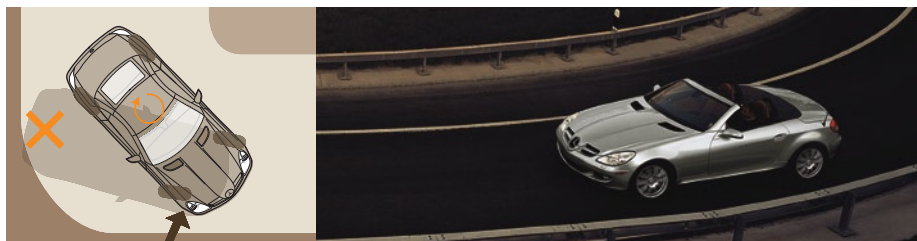
It used to be the advice was simple: If you buy a sports car, go for the stick shift. And with the SLK 350, who could blame you? The newly redesigned 6-speed manual is everything an enthusiast could ask for, with short, direct throws and a light, positive action. But for those who love to drive, the 7-speed automatic is an equally tempting option. The only 7-speed in the industry, it gives an unmatched range of ratios for everything from vigorous acceleration to relaxed cruising. You can tap the shifter left or right to enjoy the manual-style control of Touch Shift. Or for a burst of power—like a blistering passing move—hold the lever to the left for a second and the transmission will automatically preselect the optimum gear for acceleration. Which transmission is right for you? Try them both. You'll have a great time deciding.



46% less twist. Way more shout.

As impressive as ultimate cornering grip may be, it's how the SLK gets there that will make you sing out every time you enter a turn. Forty-six percent greater torsional rigidity helps the 4-wheel multilink suspension work with razor-sharp precision, allowing the staggered-width 17" high-performance tires¹ to be pushed eagerly into every corner. The surgical accuracy of rack-and-pinion steering lets you point that Formula One-inspired nose exactly where you want it. A near-ideal front-to-rear weight balance delivers the same thrill whether diving in for that late apex or unwinding the wheel as you come rocketing out. And with our standard Electronic Stability Program (ESP) stability control,² you can explore the SLK's awe-inspiring handling with confidence-inspiring poise. It all adds up to an experience only the SLK can provide—the ability to turn rubber, metal and tarmac into pure emotion.

¹ Z-rated tires are optimized for performance driving and may provide reduced ride comfort, increased tire noise, substantially increased treadwear and greater susceptibility to damage compared with H-rated tires. ² No system, no matter how sophisticated, can repeal the laws of physics or overcome careless driving actions. Please always wear your seat belt.



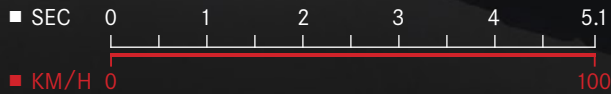
54

precision perforations in each front rotor.

Countless precision stops.

At first glance, those little holes may not seem like much. But in a high-performance braking situation where rotors can get red-hot and brake fluid can boil, the ability to dissipate heat and vapours is vital. Rather than simply drilling holes in the discs—a method that can cause “stress risers” that weaken the metal—the perforations in the SLK front brakes are cast in place to help maintain maximum strength. With the stopping power of competition-bred hardware such as beefy 4-piston front calipers grasping largest-in-class ventilated 330-mm discs, and ABS with emergency-sensing Brake Assist, the SLK 350 can exceed the expectations of even the most demanding driver. You can count on it.





355 hp
period.

Affordable exotic. The term gets thrown around, but does any vehicle truly live up to it? For your consideration, we offer the SLK 55 AMG—the most affordable car worthy of the label. With a handcrafted 5,439-cc V-8 pumping out 355 hp and 376 lb-ft of peak torque and the first 7-speed automatic ever offered on an AMG model, you can reach 100 km/h in a scant 5.1 seconds! Bend curves to your will with an AMG-calibrated suspension and feel the arresting performance of 6-piston composite front calipers grasping perforated 340-mm brake discs. After you've admired the unique AMG-design lower bodywork, the subtle rear lip spoiler, the AMG multispoke 18" wheels with high-performance tires², and the sophisticated growl departing the four polished stainless-steel exhaust tips, you might just decide this is the only exotic you'll ever need—at any price.

¹ Stated rates of acceleration are based upon manufacturer's track results and may vary depending upon model, environmental and road surface conditions, driving style, elevation and vehicle load. ² AMG 18" wheels and accompanying high-speed-rated tires provide substantially increased treadwear and reduced ride comfort compared to H-rated tires. Serious wheel and tire damage may occur if the vehicle is operated on rough or damaged road surfaces or upon encountering road debris or obstacles.



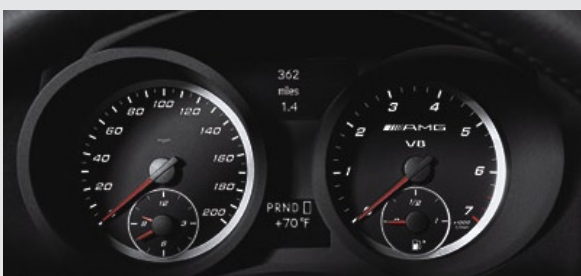


The more time you spend inside the SLK 55 AMG, the more you realize how much thought went into it. Your immediate impulse for manual shifting is met by ideally placed fingertip controls on the thick-rimmed, leather-wrapped steering wheel; and AMG SpeedShift™ programming quickens those changes by 35%. Your cognitive centre's demand for information is fed by the rapid sweep of red indicators across a 320-km/h speedometer¹ and 7,000-rpm tachometer. Your brain's pleasure centre revels in the touch of supple two-tone Nappa leather with Alcantara trim on AMG sport seats. It's the perfect environment for those who like to think fast.

Your brain runs at
320 km/h.

Can your car measure up?

¹ Please obey all speed laws. Top speed electronically limited to 250 km/h.





1

skipped heartbeat.

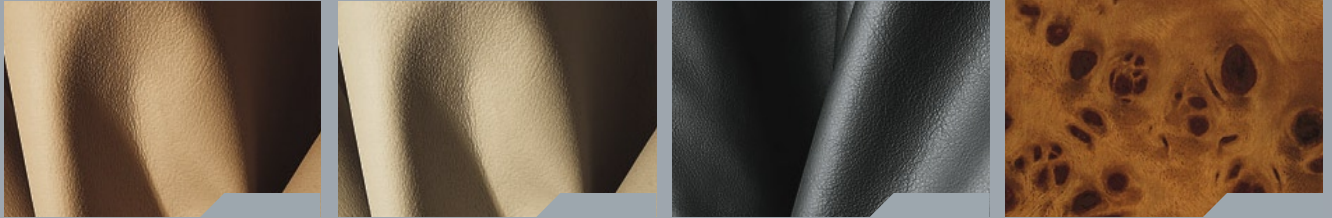


The optional AMG Sport Package for the SLK 350 is designed to elicit an immediate visceral response. You might salivate over the new staggered-width 17" AMG-design 5-spoke alloy wheels wrapped in high-performance tires,¹ your gaze riveted by the chiselled front air dam, side skirts and rear apron. The taut, lowered sport suspension will accelerate your pulse as you hunt down your favourite curves, while steering wheel-mounted shift buttons will put the spine-tingling thrill of the optional 7-speed automatic's Touch Shift feature at your fingertips. We know you'll be drawn to it, but be careful—it's not for the faint of heart.

¹ Z-rated tires are optimized for performance driving and may provide reduced ride comfort, increased tire noise, substantially increased treadwear and greater susceptibility to damage compared with H-rated tires.

designo Automotive artistry

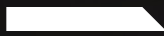
With its aggressive lines and invigorating performance, the completely new SLK embodies the thrill that only a true sports car can provide. For some, it's also the perfect canvas for a most personal statement of individual style. To provide exclusivity to go with the exhilaration, we offer you a host of stunning *designo* refinements.¹ Choose from a palette of exclusive exterior colours, select glove-soft Nappa leather upholstery, and exquisite wood trim that's matched by eye for grain, then shaped and finished by hand. Whatever your *designo* preferences, the result will be a singular work of automotive art that would make a delightful addition to any collection.



¹ SLK 350 requires heated seats or AIRSCARF for *designo* leather interiors.

22°

of freedom.



If you drive a convertible, you know it—that point when it gets too late in the day or in the season, and the top must come up. It's like being told to go inside when you still want to play. That's why Mercedes-Benz created AIRSCARF. A soothing stream of heated air to your neck, head and shoulders helps take the bite out of chilly top-down conditions. The system features individual 3-stage temperature controls and airflow that automatically adjusts to your driving speed, and the option also includes heated seats. With AIRSCARF, it's never been more fun to stay out late.

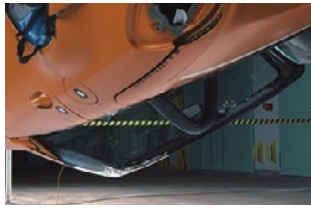


Protection at

0.000001

millimetre.

It's a simple desire. You'd like your SLK to stay looking new for a long time. To accomplish this, Mercedes-Benz went to the leading edge of scientific exploration, to the world of nano-technology. A Mercedes-Benz exclusive, the SLK incorporates microscopic ceramic nano-particles into the paint's clearcoat. These nano-particles float around freely in the liquid paint, but as the paint cures, they cross-link into an incredibly strong, dense network. The resulting finish offers considerably greater and longer-lasting resistance to fine scratches than conventional paint finishes, for an enduring deep gloss. That same kind of focused innovation also extends to SLK's optional equipment. Thoughtful items like rain-sensing windshield wipers and corner-illuminating front foglamps help contribute to a lustrous driving experience.



250

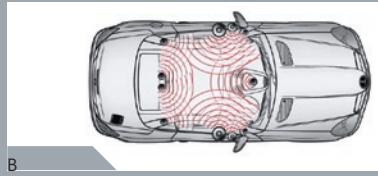
milliseconds that can change the rest of your life.

Sometimes the smallest detail can make a huge difference. Consider the LED taillamps on the SLK. They illuminate the brake lamps 250 milliseconds quicker than traditional bulbs. A quarter of a second may not sound like much—it's faster than the blink of an eye—but a car following you at 100 km/h covers nearly seven metres in that amount of time. Sometimes an accident can be avoided with just a few extra centimetres to respond. So something as simple as a better brake lamp that may give the car behind you extra stopping distance isn't just smart. It's brilliant.



It starts with higher standards. The robust structure and advanced safety technologies of the SLK-Class allow it to pass a battery of more crash tests than any single government requires. Along with the open-air exhilaration only a roadster can provide, it's comforting to know you're guarded by dual steel roll bars bolted directly to the body structure to enhance rollover protection,¹ and the protection of six air bags—including head/thorax side-impact air bags and dual knee air bags.

¹ The roll bar system is designed to enhance the level of rollover protection compared to an open vehicle without one. No system, no matter how sophisticated, can eliminate the chance of injury in an accident. Please always wear your seat belt.



Infinitely appealing

- (A) **8-WAY POWER SEATS**¹ The 8-way power driver and passenger seats each feature 3-position memory for custom-tailored comfort, and include a 4-way power steering column. The driver's seat memory also retains settings for the steering column and the side mirrors.
- (B) **LOGIC7 DIGITAL SURROUND SOUND** Raise your SLK to new levels of sonic splendour with a 380-watt 11-speaker harman/kardon[®] LOGIC7[®] 7.1-channel digital surround sound system. It's part of the optional Premium Sound Package that also includes the COMAND system and a glovebox-mounted 6-disc CD changer.
- (C) **COMAND** The Cockpit Management and Data system integrates the radio and controls for the optional phone and glovebox-mounted single-feed 6-disc CD changer into a single in-dash unit that you can access from the SLK's standard multifunction display and steering-wheel controls. A large colour-LCD screen provides crisp, clear displays. COMAND is part of the optional Premium Sound Package, which is also available with or without a new DVD-based GPS satellite navigation system² which reads the maps of Canada, the contiguous U.S. and Hawaii from a single disc.
- (D) **BI-XENON HEADLAMPS** High Intensity Discharge headlamps produce a brighter, whiter light on both high and low beams for better vision over longer distances. They also have dynamic level control to help cut glare, as well as heated high-pressure washers. Backlit "gills" provide a predatory glow from the side view.
- (E) **7-SPEED AUTOMATIC TRANSMISSION**¹ The greater number of gears allows for a snappier first gear for quick off-the-line acceleration, a smaller rpm drop with each upshift for seamless mid-range response, and a long-legged top gear for quiet and economical cruising.
- (F) **VAVONA WOOD TRIM**³ For an ideal blend of sport and luxury, add the classic beauty of Vavona wood on the steering wheel, handbrake, door pulls and dash.

¹ Standard on SLK55 AMG. ² While the navigation system provides directional assistance, the driver must remain focused on safe driving behaviour, including paying attention to traffic and street signs. The driver should utilize the system's audio cues while driving and should only consult the map or verbal displays once the vehicle has been stopped in a safe place. DVD-ROM maps do not cover all areas nor all routes within an area. ³ Not available with heated steering wheel or SLK55 AMG. ⁴ First year's monitoring provided at no cost with subscription. Subscription is required for service to be active. Tele Aid operates only where cellular and Global Positioning System coverage are available.

TELE AID

The optional Tele Aid system uses GPS satellites plus a digital cellular link to provide 24-hour live assistance at the touch of any of three buttons in your SLK-Class. If you need help—or see someone who does—the SOS button is for summoning emergency aid. Press the *i*-button for information. And the wrench button connects you to our legendary Roadside Assistance. Tele Aid also includes Automatic Collision Notification, which engages the SOS function if an air bag or Emergency Tensioning Device (ETD) deploys, as well as stolen vehicle tracking and remote keyless unlocking service.⁴





MOTOROLA V60i™ DIGITAL PORTABLE PHONE

Plug one of our sleek new accessory Motorola phones into your SLK, and it becomes part of our integrated Hands-Free Communication System.¹ With the phone docked in the armrest cradle, your phone book is automatically downloaded into the car while the phone battery charges, and the phone is connected to the vehicle's integrated antenna system. Calls are clearly delivered through the audio system, which automatically mutes the radio or pauses the CD. You can even control calls via the multifunction steering wheel. Your Mercedes-Benz dealer offers a selection of the latest Motorola mobile phones for most major carriers.



(G) **HEATED SEATS**² To help take the chill out of even the coldest day, heated seats offer three levels of soothing warmth. (H) **6-DISC CD CHANGER** Conveniently mounted in the glovebox and fully integrated with the audio or COMAND system in your SLK-Class, the single-feed 6-disc CD changer makes it easy to enjoy hours of your favourite audio entertainment. (I) **CORNER-ILLUMINATING FOGLEAMPS**³ To help you see better in turns and when entering dark areas such as driveways and parking structures, corner-illuminating front foglamps (included with Bi-Xenon headlamps) monitor steering angle and turn-signal use, and illuminate to help brighten your path. (J) **RAIN-SENSING WIPERS** The intermittent wipers automatically adjust their frequency based on the amount of rainfall that an infrared sensor detects on the windshield glass. (K) **PLEXIGLASS WINDSCREEN** This accessory windscreen helps keep the rear view clear while limiting noise and buffeting when you drive your SLK with the top down.

ACCESSORIES

Your dealer offers an enticing selection of accessory items—from distinctive alloy wheels to eye-catching brushed aluminium mirrors—to let you add even more individualized appeal to your SLK. To ensure the highest quality, each of these components is designed, engineered and tested to the same exacting standards as your Mercedes-Benz.

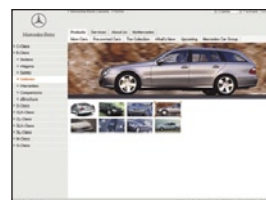
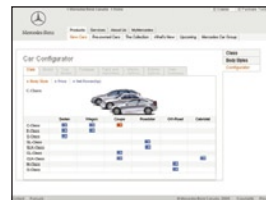
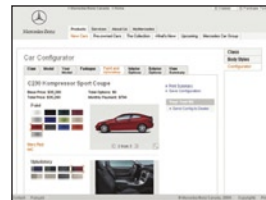


¹ For safety reasons, we encourage the driver to stop the vehicle in a safe place before answering or placing a call. Always dock the phone in the cradle for use inside the vehicle. Operating a phone or radio transmitter with its own attached or built-in antenna while the engine is running can interfere with the vehicle's electronic systems.
² Standard on SLK 55 AMG. ³ Not available with AMG Sport Package or SLK 55 AMG.

 <http://mercedes-benz.ca>

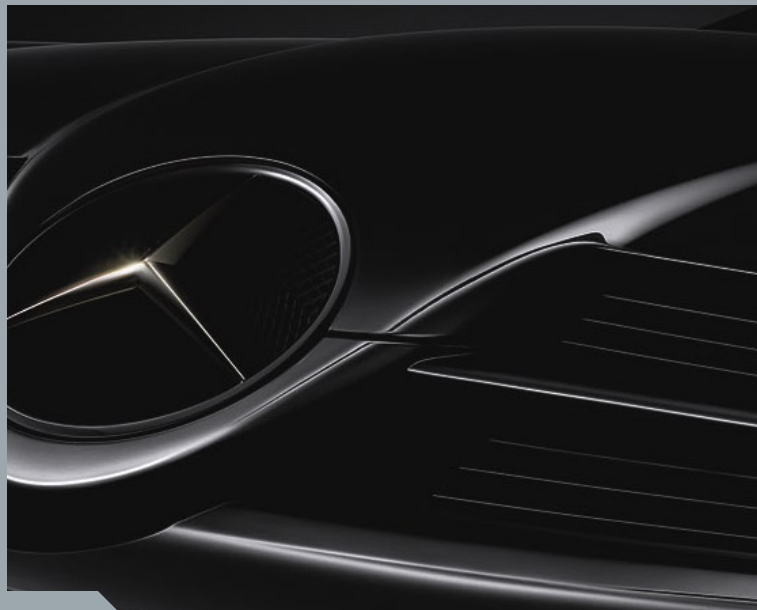
Our world—at your fingertips

Still looking for more Mercedes-Benz information? Visit mercedes-benz.ca to open an online window to Mercedes-Benz and our vehicles. Here, you can get information about any model, download eBrochures or take a look at financing and leasing options. Our website also offers details about European Delivery, the Mercedes-Benz Extended Limited Warranty, upcoming product information, Mercedes-Benz Customer Care, and more—including the history of Mercedes-Benz. There's a world of information, but only one address to remember: mercedes-benz.ca.



The first name in service

The innovative spirit that drives us to create the world's finest vehicles is directly reflected in an impressive selection of owner benefits. Consider the 24-hour Mercedes-Benz Roadside Assistance Program, the first of its kind. Our Flexible Service System Plus lets you go farther than ever between scheduled oil changes. And our Customer Service Centre can provide answers to questions about your vehicle. When we invented the first car in 1886, we also created the first car owner. For nearly 120 years, it's been our passion to ensure that driving a Mercedes-Benz remains an experience that's second to none.



24-hour Roadside Assistance

During the basic warranty coverage of 48 months and the time duration of the optional Extended Limited Warranty, Mercedes-Benz Roadside Assistance will be at your service. We'll bring you some gas, replace a flat tire with your spare, or jump-start your car. In the event of a mechanical breakdown, if attempts by our Roadside Assistance technician have not made your vehicle safely operable, towing service will be provided to the nearest Mercedes-Benz dealership. Assistance is available 24 hours a day, every day, to anyone driving a Mercedes-Benz anywhere in Canada or the continental U.S.¹

Wear and tear coverage

For 24 months or 40,000 km (whichever comes first) many items normally considered "wear and tear," such as light bulbs, wiper blade refills, and brake pads and discs, are covered. If necessary, an authorized Mercedes-Benz dealer will replace these parts at no charge to you.

Customer service

Owning a Mercedes-Benz means that when you have a question, we're here to help. Our Customer Service Centre is open from 9 a.m. to 5 p.m. EST, Monday through Friday, and is staffed with knowledgeable Mercedes-Benz people who can talk you through the finer points of working your car's audio system—or even assist you in locating the nearest Mercedes-Benz dealership. Just call 1-800-387-0100. It's that simple.

Mercedes-Benz warranties

The Mercedes-Benz New Car Limited Warranty covers defects in materials or workmanship for 48 months or 80,000 km, whichever occurs first. Major components such as the engine, transmission, drivetrain, fuel and cooling systems, steering and brakes are covered for 5 years or 120,000 km. To widen your window of confidence, you can opt for a Mercedes-Benz Extended Limited Warranty as well.²

Time for basic maintenance?

Ask your SLK-Class.

No two drivers are the same. That's why the Flexible Service System Plus in your SLK-Class monitors certain indicators of oil condition, engine loads, rpm, operating temperatures and your driving habits to determine when basic maintenance is really necessary.³ It even monitors brake-pad wear. Then a display on the dash reminds you to contact your Mercedes-Benz dealer for an appointment. So you can spend less time servicing your SLK-Class and more time enjoying your life.

Genuine Mercedes-Benz parts

Your dealer has access to a vast inventory of parts for both new and vintage Mercedes-Benz vehicles. And we've made a nationwide effort to encourage our dealers to keep parts and labour prices competitive with those of independent garages.

Trip Interruption reimbursement

If a breakdown covered by your New Car Limited Warranty occurs more than 80 km from your home, leaves your Mercedes-Benz vehicle inoperable or unsafe to drive, and requires overnight repairs, we've got you covered. You will be reimbursed up to \$500 for hotel accommodations and up to \$600 for alternate travel expenses per incident while your car is being repaired at an authorized Mercedes-Benz dealership.

Alternate Transportation

Your life doesn't have to get put on hold just because it's time for service or maintenance on your car. That's why your Mercedes-Benz dealer always endeavours to provide you with alternate transportation when you drop off your vehicle for service.⁴

¹ Vehicle must be accessible from main roads. Roadside Assistance repairs may involve charges for parts, service and towing. Depending on the circumstances, these services may be provided by an outside service, courtesy of Mercedes-Benz Roadside Assistance. For full details of the Roadside Assistance Program, please see your dealer. ² Please see your dealer for warranty details as well as for terms, conditions and pricing for extended warranty options. ³ Maintenance items are identified in the Service Booklet for each model. Driver is responsible for monitoring fluid levels and tire pressures between service visits. Limitations apply. ⁴ Certain restrictions may apply. Terms, conditions and dealer participation may vary.

SLK 350 COUPE/ROADSTER

SLK 55 AMG COUPE/ROADSTER¹

ENGINE / DRIVETRAIN

Engine type Construction	3,498-cc DOHC 24-valve 90° V-6. High-pressure die-cast alloy cylinder block. Alloy heads. Counter-rotating balance shaft.	5,439-cc AMG-built SOHC 24-valve 90° V-8. High-pressure die-cast alloy cylinder block. Reinforced components. Alloy heads. Lightweight camshafts.
Net power	268 hp @ 6,000 rpm	355 hp @ 6,000 rpm
Net torque	258 lb-ft @ 2,400–5,000 rpm	376 lb-ft @ 3,500 rpm
Compression ratio	10.7:1	11.0:1
Induction	Continuously variable intake and exhaust timing. Magnesium 2-stage resonance intake manifold. Electropneumatic turbulence flaps.	Magnesium 2-stage resonance intake manifold.
Fuel and ignition system	ME 9.7 engine management. Integrated sequential multipoint fuel injection and ignition. Electronic throttle. One high-energy ignition coil and spark plug per cylinder. 160,000-km spark plug intervals.	ME 2.8 engine management. Integrated sequential multipoint fuel injection and phased twin-spark ignition. Electronic throttle. Two high-energy ignition coils and two spark plugs per cylinder. 160,000-km spark plug intervals.
Fuel requirement	Premium unleaded, 91 pump octane.	Premium unleaded, 91 pump octane.
Fuel tank capacity	70.0 litres (with 9.1-litre reserve).	70.0 litres (with 10.0-litre reserve).
Exhaust system	Sport-tuned, with dual mufflers and polished chrome tips.	Dual AMG low-backpressure, with four polished stainless-steel tips.
Manual transmission	Standard. Fully synchronized 6-speed with direct-action short-throw shifter and clutch-starter interlock.	Not available.
Automatic transmission	Optional 7-speed automatic. Electronically controlled shifting. Driver-adaptive programming adjusts shift points to the driver's current driving style. Touch Shift allows driver to manually downshift and allow upshifts by nudging the shift lever left or right from the Drive position. Shift into Optimum Gear programming allows one-touch selection of the best gear for maximum acceleration or engine braking by holding the shift lever to the left of Drive for one second. Driver-selectable Comfort mode starts vehicle moving in 2nd gear or a second Reverse gear, and upshifts at lower rpm, to help improve control on slippery surfaces.	Standard AMG-enhanced 7-speed automatic.
AMG SpeedShift and fingertip manual mode	Not available. AMG SpeedShift™ programming provides up to 35% faster gear changes, automatically downshifts during braking, prevents unwanted upshifting while cornering, and features torque converter lockup in all forward gears. Fingertip manual mode allows direct-access shifting through forward gears via buttons on back of upper steering-wheel spokes (left button downshifts, right button upshifts) or via Touch Shift feature of shift lever, and will automatically intervene only to select 1st gear when the vehicle stops. In Standard and Comfort modes, the steering-wheel buttons operate the Touch Shift feature.	Standard.
Fingertip shift control	Included with AMG Sport Package. ² Fingertip shift control operates Touch Shift feature via rocker-type buttons on back of upper steering-wheel spokes (both buttons upshift and downshift).	Not available.
Drive configuration	Rear-wheel drive. Rear axle ratio: 3.27:1.	Rear-wheel drive. Rear axle ratio: 3.06:1.
Electronic Stability Program (ESP)	ESP compares the driver's intended course, via steering and braking inputs, to the vehicle's response, via lateral acceleration, rotation (yaw) and individual wheel speeds. ESP then brakes individual front or rear wheels and/or reduces excess engine power as needed to help correct understeer (plowing) or oversteer (fishtailing). ESP also integrates all-speed traction control, which senses drive-wheel slip under acceleration and individually brakes the slipping wheel or wheels, and/or reduces excess engine power, until control is regained. ³	

PERFORMANCE	MANUAL	AUTOMATIC	AUTOMATIC
Acceleration, 0–100 km/h⁴	5.6 seconds	5.7 seconds	5.1 seconds
Fuel economy,⁵ city estimate	12.9 l/100 km	12.3 l/100 km	15.0 l/100 km
highway estimate	8.5 l/100 km	8.5 l/100 km	9.8 l/100 km

CHASSIS

Front/rear suspension	Independent 3-link front with coil springs over gas-pressurized shock absorbers, and anti-dive geometry. Independent 5-arm multilink rear with separate rear coil springs and shock absorbers, and geometry for antisquat and alignment control. Front and rear stabilizer bars.	
Sport suspension	Optional lowered sport suspension with shorter, firmer coil springs and sport-tuned shock absorbers.	Standard AMG sport suspension with AMG-calibrated coil springs and shock absorbers.
Steering type	Rack-and-pinion with integrated hydraulic damper. Steering-wheel turns: 2.9 lock-to-lock. Turning circle: 34.5 ft/10.5 m curb-to-curb.	
Power assist	Standard: Constant assist. AMG Sport Package ² : Vehicle speed-sensing variable assist.	Vehicle speed-sensing variable assist.
Wheels, aluminium-alloy, front–rear	Standard: 10-spoke, 7.5Jx17–8.5Jx17. AMG Sport Package ² : AMG thin-spoke monoblock, 7.5Jx17–8.5Jx17.	Polished AMG multispoke, 7.5Jx18–8.5Jx18. ⁶
Tires, steel-belted radial	225/45 ZR17 front–245/40 ZR17 rear, high-performance. ⁷	225/40 ZR18 front–245/35 ZR18 rear, high-performance. ⁶
Brake system	Dual-circuit power-assisted 4-wheel disc.	
Brake discs, front–rear	330-mm perforated and ventilated–290-mm solid.	340-mm perforated and ventilated–330-mm ventilated.
Brake calipers, front–rear	4-piston fixed–dual-piston fixed.	AMG 6-piston fixed–AMG 4-piston fixed.
Antilock Braking System	ABS senses impending wheel lockup under heavy braking and pumps the front brakes individually or the rear brakes together (to help maintain stability) as needed up to 30 times per second, to prevent lockup and maintain steering ability.	
Brake Assist	Brake Assist senses emergency braking via the speed at which the driver presses the brake pedal and immediately applies maximum available power boost, potentially reducing the overall stopping distance by eliminating the delay caused by a common human tendency not to brake hard enough, soon enough. Letting up on the brake pedal releases Brake Assist. ⁸	

EXTERIOR DIMENSIONS ⁹	SLK 350	SLK 55 AMG
Wheelbase	95.7 in/2,430 mm	95.7 in/2,430 mm
Overall length	160.7 in/4,082 mm	160.9 in/4,087 mm
Overall height	51.1 in/1,298 mm	50.0 in/1,271 mm
Overall width	70.4 in/1,778 mm	70.6 in/1,794 mm
Track, front	60.1 in/1,526 mm	60.0 in/1,524 mm
rear	61.0 in/1,549 mm	61.0 in/1,549 mm
Coefficient of drag	0.34	0.35
Curb weight	3,231 lb/1,465 kg (manual)	3,397 lb/1,540 kg

INTERIOR DIMENSIONS⁹

Headroom	37.9 in/965 mm	37.9 in/965 mm
Legroom	42.5 in/1,079 mm	42.5 in/1,079 mm
Hiproom	54.6 in/1,387 mm	54.6 in/1,387 mm
Shoulder room	52.2 in/1,326 mm	52.2 in/1,326 mm
Trunk capacity	9.8 cu ft/277 litres (top up) 6.5 cu ft/185 litres (top down)	9.8 cu ft/277 litres (top up) 6.5 cu ft/185 litres (top down)

¹ Delayed availability. See your dealer. ² Optional. ³ No system, no matter how sophisticated, can repeal the laws of physics or overcome careless driving actions. Please always wear your seat belt. ⁴ Stated rates of acceleration are based upon AMCI's test-track results for SLK 350 and manufacturer's track results for SLK 55 AMG, and may vary depending upon model, environmental and road surface conditions, driving style, elevation and vehicle load. ⁵ These estimates are based on the Government of Canada's approved criteria and testing methods. The actual fuel consumption of this vehicle may vary. Refer to the *Fuel Consumption Guide*. ⁶ AMG 18" wheels and accompanying high-speed-rated tires provide substantially increased treadwear and reduced ride comfort compared to H-rated tires. Serious wheel and tire damage may occur if the vehicle is operated on rough or damaged road surfaces or upon encountering road debris or obstacles. ⁷ Z-rated tires are optimized for performance driving and may provide reduced ride comfort, increased tire noise, substantially increased treadwear and greater susceptibility to damage compared with H-rated tires. ⁸ Braking effectiveness also depends on proper brake system maintenance, and tire and road conditions. ⁹ Figures are with top up unless listed otherwise.

SLK 350
SLK 55 AMG¹

EXTERIOR FEATURES

- - Formula One-style nose with colour-keyed grille crossfins.
- ■ Formula One-style nose with black grille crossfins.
- ■ AMG-design Formula One-style front air dam with mesh air intakes, side skirts and rear apron. Colour-keyed AMG-design rear lip spoiler.
- ■ Electrohydraulic retractable steel hardtop. One button lowers or raises top and all four side windows. Rear window pivots 150° while top folds.
- ■ Trunk lid opens at front top retraction and at rear for cargo access.
- ■ Dual automatically heated power mirrors. Auto-dimming left-side mirror. Parking-assist right-side mirror can tilt down upon shifting to Reverse.
- ■ Electrically heated rear window with auto-shutoff based on time, driving speed and outside temperature. Dual aero-blade windshield wipers with heated washer nozzles.
- ■ Variable-focus projector-beam halogen headlamps with high-impact polycarbonate lenses. Halogen front foglamps. Single red rear foglamp, in left taillamp cluster.
- - Red and white rear lamps with dual-intensity LED brake and taillamps.
- ■ Smoked rear lamps with dual-intensity LED brake and taillamps.
- ■ Automatic lamp substitution uses a nearby lamp if a critical bulb fails.
- ■ Touch Turn Signals flash three times with one touch. LED turn signals in side mirrors.

LOCKING / SECURITY

- ■ SmartKey uses an electronic code to unlock steering column and ignition. Removing SmartKey from ignition disables engine computer.
- ■ SmartKey integrates remote door lock/unlock buttons, trunk opener, removable valet key, and panic alarm. Driver may selectively unlock only the driver's door and fuel filler, or both doors plus the trunk and fuel filler. SmartKey offers infrared-remote opening/closing of windows and operation of retractable hardtop.
- ■ Driver-programmable user-recognition feature links each SmartKey to driver's preferences for driver's seat memory settings¹⁰ (all three presets), various climate control settings, and programmable vehicle preferences.
- ■ Driver-programmable driveaway locking can automatically lock the doors when the car reaches 15 km/h.
- ■ Night security illumination uses the car's exterior lights to help illuminate a path after parking. Driver-programmable intervals of up to 60 seconds.
- ■ Locator lighting can help light a return path when the car is remote-unlocked in darkness. Unlocking car activates illuminated entry system.
- ■ Automatic antitheft alarm system with remote panic feature.
- ■ Integrated 3-button garage door control, HomeLink[®] compatible.
- ■ Emergency trunk release, located inside trunk and illuminated for 60 minutes after trunk lid is closed.

INTERIOR FEATURES

- ■ Multifunction steering wheel provides controls for audio system, optional phone, and multifunction display (see Instrumentation, at right).
- ¹¹ ■ Fingertip shift buttons behind steering-wheel spokes.
- ■ Power front side windows, with one-touch express-up/down. One-button lowering or raising of all four windows via power top switch.
- ■ Fine-mesh wind deflector attaches to roll bars.
- - 4-way (tilt/telescoping) manual steering column.
- ¹¹ ■ 4-way power steering column, position linked to driver's seat memory, with driver-programmable easy-exit feature.
- ■ Electronic cruise control.
- ■ Delayed-shutoff courtesy lamps. Dual reading lamps. Automatic ambient interior lighting of console and footwells. Entrance lamps in doors. Illuminated console storage. Illuminated vanity mirrors. Auto-dimming rearview mirror.
- ■ Retractable dual cupholder. Enclosed storage in console and on rear cabin wall. Illuminated glovebox. Pockets in both doors. Parcel net in right footwell.
- ■ Illuminated, carpeted trunk. Movable rigid cover allows increased storage capacity when hardtop is up.

CLIMATE CONTROL

- ■ Digital dual-zone automatic climate control with sun sensor, and humidity/dewpoint sensor (helps reduce window fogging or prevent overdrying of cooled air).
- ■ Dash-top diffuser vent. Electrostatic dust/pollen filter and activated charcoal pollutant filter. Tunnel mode offers one-touch closing of all windows and cabin air intake by holding the air-recirculation button.
- ■ REST mode can ventilate cabin or help keep cabin warmer using residual heat for up to 30 minutes after car is turned off.

SEATING / UPHOLSTERY / TRIM

- - 8-way manual sport seats with Silver-painted magnesium trim.
- ■ Heated AMG-design sport seats with Silver-painted magnesium trim.
- ¹¹ ■ 8-way power seats, each with 3-position memory. Driver's seat memory includes steering column and outside mirror positions.
- - Premium leather upholstery on seats and door inserts. Silver trim on doors, dash and console. Leather-trimmed 3-spoke sport steering wheel and shift knob.
- ■ AMG-design two-tone Nappa leather upholstery. AMG-design aluminium trim on dash and console with Silver trim on doors. AMG-design leather-trimmed 3-spoke sport steering wheel and shift knob.
- ■ Rubber-studded brushed aluminium pedals. Stainless-steel door sill trim (with AMG insignia on SLK 55 AMG models). Velour carpeting and floor mats (exclusive AMG floor mats on SLK 55 AMG).

SLK 350
SLK 55 AMG¹

■ STANDARD □ OPTIONAL - NOT AVAILABLE

AUDIO / COMMUNICATION

- ■ AM/FM stereo/weatherband radio with in-dash single-CD player. In-dash operating panel integrates controls and displays for radio, CD player, and optional 6-disc CD changer and digital telephone.
- ■ Fibre-optic network offers precise, high-speed communication among components. Factory preparation for optional CD changer and phone using fibre-optic network.

INSTRUMENTATION

- ■ Electronic analogue speedometer, tachometer, fuel gauge and quartz clock.
- - Black gauges with white markings. Silver instrument tubes.
- ■ AMG-design gauges, black with white markings and silver accents, including 320-km/h speedometer.¹² Black instrument tubes.
- ■ Digital display for odometer and Touch Shift gear/mode selection.¹³
- ■ Multifunction display, scrolled via steering-wheel controls: Resettable trip meter, outside temperature indicator. Digital speed, coolant temperature, Flexible Service System, engine oil-level check (SLK 55 AMG). Radio tuner, CD player, CD changer.¹⁰ Navigation system route guidance.¹⁰ Vehicle reminder and malfunction messages. Programmable settings for vehicle features. Trip computer. Mobile phone book.¹⁰
- ■ Flexible Service System Plus displays distance remaining to next basic maintenance service, indicates type of service due, and provides automatic reminder feature when service interval draws near. System also monitors brake-pad wear.

RESTRAINT SYSTEMS

- ■ Integrated Restraint System¹⁴: Driver and passenger each provided with a front air bag, knee air bag, side-impact head/thorax air bag, and 3-point seat belt with Emergency Tensioning Device (ETD) and belt force limiter. Height-adjustable head restraints.
- ■ Adaptive dual-stage front air bags are deployed in response to frontal impact severity exceeding a preset threshold.¹⁴ ETDs deploy in a front or rear impact exceeding a preset threshold of severity, or certain rollovers. ETD will not deploy if seat belt is unfastened.
- ■ Dual fixed-position heat-treated micro-alloy steel roll bars.¹⁵

OPTIONAL EQUIPMENT

- ■ 7-speed automatic transmission with Touch Shift control.
- - **AMG Sport Package:** 17" AMG 5-spoke alloy wheels. Lowered sport suspension. AMG-design front air dam with mesh air intakes, side skirts and rear apron.¹⁶ Variable-assist power steering.¹⁶ Steering-wheel shift buttons.¹³
- □ Bi-Xenon headlamps with heated washers. Corner-illuminating front foglamps.¹⁷
- □ Heated headlamp washers.
- □ Rain-sensing intermittent wipers.
- ■ 8-way power seats, each with 3-position memory. 4-way power steering column. Driver's seat memory includes steering column and outside mirror positions.
- ■ Heated seats.
- - Heated steering wheel.¹⁸
- □ AIRSCARF neck-level heating system (includes heated seats).
- □ **Premium Sound Package:** 380-watt, 11-speaker harman/kardon[®] LOGIC7[®] digital surround sound. Integrated single-feed 6-CD changer, mounted in glovebox. COMAND Cockpit Management and Data system integrating AM/FM stereo/weatherband radio, in-dash single-CD player, and a 16.5-cm colour-LCD in-dash screen. Package is available with or without DVD-based GPS navigation system, with map database for Canada, the contiguous U.S. and Hawaii on a single DVD.¹⁹ Dedicated DVD drive in trunk.
- □ Integrated single-feed 6-CD changer, mounted in glovebox (dealer-installed).
- □ Integrated Motorola V60i[™] tri-band digital portable telephone (dealer-installed).
- □ Tele Aid uses Global Positioning System (GPS) satellites to determine the current location of your car, plus a cellular link to provide 24-hour contact with Mercedes-Benz for emergency aid (SOS button), information (i-button) or Roadside Assistance (wrench button). Automatic Collision Notification engages SOS function if an air bag or Emergency Tensioning Device (ETD) deploys. Tele Aid also includes Automatic Alarm Notification (which alerts Mercedes-Benz to contact you if the antitheft alarm is set off), stolen vehicle tracking, and remote keyless unlocking service.²⁰
- - Tobacco Brown Nappa leather.
- - Polished Vavona wood trim on dash, doors, steering wheel and handbrake.²¹
- □ Metallic paint (no charge).

10 When so equipped. 11 Available only as part of a package or in combination with other options. See Optional Equipment listing above. 12 Top speed electronically limited to 250 km/h. Please obey all speed laws. 13 On models with automatic transmission. 14 **WARNING: THE FORCES OF A DEPLOYING AIR BAG CAN CAUSE SERIOUS OR FATAL INJURY TO A CHILD UNDER AGE 13. A CHILD UNDER 13 MUST NOT BE A PASSENGER IN THIS VEHICLE UNLESS THE CHILD IS BELTED INTO AN APPROPRIATE, PROPERLY INSTALLED BABYSMART-COMPATIBLE CHILD SEAT. SEE OPERATOR'S MANUAL FOR ADDITIONAL WARNINGS AND INFORMATION ON AIR BAGS, SEAT BELTS AND CHILD SEATS.** At time of press, the toddler seat (for children 9–18 kg) is not approved for use in Canada. 15 The roll bar system is designed to enhance the level of rollover protection compared to an open vehicle without one. No system, no matter how sophisticated, can eliminate the chance of injury in an accident. Please always wear your seat belt. 16 Standard on SLK 55 AMG. 17 Corner-illuminating foglamps included only on SLK 350 models without AMG Sport Package. 18 Not available with Vavona wood trim or on vehicles equipped with both AMG Sport Package and automatic transmission. 19 DVD-ROM maps do not cover all areas nor all routes within an area. One Canada/U.S. DVD-ROM is included with vehicle. 20 First year's monitoring provided at no cost with subscription. Subscription is required for service to be active. Tele Aid operates only where cellular and Global Positioning System coverage are available. 21 Not available with heated steering wheel.




Mercedes-Benz

Mercedes-Benz Canada Inc.
98 Vanderhoof Avenue
Toronto, Ontario M4G 4C9
1-800-387-0100
www.mercedes-benz.ca

© 2004 Mercedes-Benz Canada Inc.
Marketing Communications

All illustrations and specifications contained in this brochure are based on the latest product information available at the time of publication. Mercedes-Benz reserves the right to make changes at any time, without notice, in colours, materials, equipment, specifications and models. Any variations in colours shown are due to reproduction variations of the printing process. Illustrations may include test situations. Some vehicles may be shown with non-Canadian equipment. Some vehicles are shown with optional equipment. harman/kardon and LOGIC7 are registered trademarks of Harman International Industries, Inc. HomeLink® is a registered trademark of Prince, a Johnson Controls Company.

 In an effort to minimize the environmental impact of this brochure, Mercedes-Benz uses a recycled coated paper that is guaranteed in writing to contain a minimum of 10% post-consumer waste.

Printed in Canada
MBC-04-612-16

SLK350 shown here and on cover with optional Iridium Silver metallic paint, AMG Sport Package and Bi-Xenon headlamps with washers.

