

THE 2006 KIA SPORTAGE



SPORTAGE


KIA MOTORS
The Power to Surprise™



THE 2006 KIA SPORTAGE
THE OFFICIAL VEHICLE OF FUN

IT'S TIME TO START HAVING MORE FUN. With the new 2006 Sportage, there's nothing holding you back. Just fire up its powerful V6 engine. Sink into the roomy interior with standard features like power windows, air conditioning and cruise control. Put yourself at ease with safety features like six standard airbags, including side curtains — not to mention our



unbeatable 5-year/100,000 kilometre Total Care Ownership Coverage.* Draw envious glances with stylish alloy wheels, body side moulding and integrated roof rails. Then revel in the fact that this well-equipped SUV comes with a very attractive price tag – a fact that is not lost on the critics. Renowned automotive magazine “*Le monde de l’auto*” named Sportage the 2005 “Best Buy” for SUVs under \$40,000. Sportage was honoured as the “Most Appealing

Entry-Level SUV in the U.S.” by the J.D. Power and Associates 2005 Automotive Performance, Execution and Layout (APEAL) Study^{SM†}. You see at Kia, our goal is to give you more than you expect for less than you expect. Which is why we have designed a range of quality vehicles with more features, more benefits, more fun and more peace of mind for a lot less money than the competition. So get into the new 2006 Sportage. And let the fun times begin.

Sportage LX-V6 with Luxury package featured throughout brochure. *See back cover for warranty details.
†Study based on responses from 115,026 U.S. new-vehicle owners surveyed during the first 90 days of ownership. www.jdpower.com

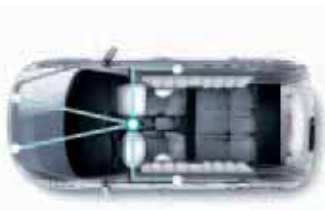
KIA IS NOW THE FASTEST GROWING AUTOMAKER IN THE WORLD WITH OVER HALF A CENTURY OF ENGINEERING EXPERTISE. WE HAVE SOLD OVER 100,000 VEHICLES IN OUR FIRST 5 YEARS IN CANADA. THAT'S FASTER THAN BMW, MERCEDES, TOYOTA AND MAZDA, ACCORDING TO WARD'S AUTOMOTIVE YEARBOOK. AND TODAY, WE HAVE OVER 150 DEALERS ACROSS CANADA, PLUS A BRAND-NEW, STATE-OF-THE-ART 90,000 SQ. FT. NORTH AMERICAN DESIGN AND TECHNICAL CENTRE IN CALIFORNIA. WITH ALL THIS UNDER OUR BELT, IT'S EASY TO SEE WHY THERE ARE MORE THAN 150,000 HAPPY KIA DRIVERS IN CANADA. FOR MORE INFORMATION VISIT





SMART SAFETY ENGINEERING

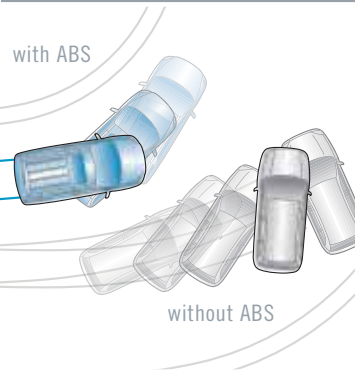
▶ **AIRBAG SENSORS.** ADVANCED AIRBAGS AND SEATBELTS ARE CONTROLLED BY SENSORS THAT WORK IN CONJUNCTION WITH EACH OTHER. TOGETHER, THEY GAUGE THE SEVERITY OF AN IMPACT, DETECT WHETHER YOU'RE BUCKLED-UP AND THEN RESPOND TO A COLLISION ACCORDINGLY.



▼ **SIX STANDARD AIRBAGS.** TO HELP PROTECT YOU IN THE EVENT OF A COLLISION, THE SPORTAGE COMES STANDARD WITH SIX AIRBAGS: FRONT AND REAR SIDE CURTAIN AIRBAGS, FRONT SEAT-MOUNTED SIDE AIRBAGS AND DUAL ADVANCED DRIVER AND PASSENGER FRONT AIRBAGS.



◀ **FRONT FOG LIGHTS** ON THE CONVENIENCE PACKAGE HELP CUT GLARE AND AID VISIBILITY DURING FOGGY AND INCLEMENT WEATHER. TOGETHER WITH THE CLEAR-LENS HALOGEN HEADLIGHTS, OUTWARD VISIBILITY AND OVERALL SAFETY ARE GREATLY IMPROVED. BESIDES THAT, FOG LIGHTS JUST PLAIN LOOK COOL.



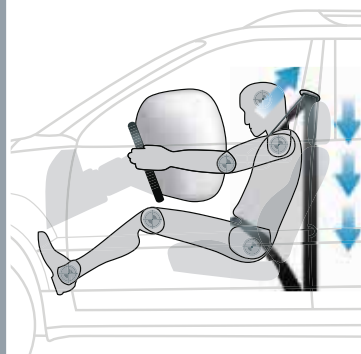
▲ **STANDARD ANTI-LOCK BRAKES** PROVIDE BETTER VEHICLE CONTROL WHEN STOPPING IN DIFFICULT CONDITIONS LIKE WET OR SLICK ROADS. SENSORS MONITOR EACH WHEEL, AND IF ONE IS ON THE VERGE OF LOCKING, THE BRAKES ARE PUMPED. THIS HELPS YOU MAINTAIN THE ABILITY TO STEER DURING HARD BRAKING AND GIVES YOU GREATER CONTROL IN AN EMERGENCY.

▲ **SIDE-IMPACT DOOR BEAMS** HELP PROTECT YOU IN THE EVENT OF A SIDE COLLISION. FRONT & REAR CRUMPLE ZONES OFFER PROTECTION AGAINST COLLISIONS FROM THE FRONT OR REAR.

▼ **HEATED MIRRORS.** THIS FEATURE ON THE CONVENIENCE PACKAGE HELPS KEEP THE OUTSIDE MIRRORS FOG-FREE IN COLD OR FROSTY WEATHER.



◀ **ELECTRONIC STABILITY PROGRAM (ESP) WITH TRACTION CONTROL SYSTEM (TCS).** THESE STANDARD, ADVANCED, ACTIVE SAFETY FEATURES ARE IN PLACE FOR ADDED SECURITY. TCS OFFERS IMPROVED TRACTION BY DETECTING AND CORRECTING WHEEL SPIN, WHILE ESP GIVES YOU IMPROVED DIRECTIONAL STABILITY TO HELP YOU MAINTAIN CONTROL IN THE EVENT OF A SEVERE SKID.



◀ **3-POINT SEAT BELTS.** STANDARD FOR ALL SEATING POSITIONS IN THE SPORTAGE. THE FRONT SEAT BELTS ALSO INCLUDE PRETENSIONERS. THESE AUTOMATICALLY RESTRAIN PASSENGER MOVEMENT, IF NECESSARY, AND WORK IN CONJUNCTION WITH A LOAD LIMITER, WHICH HELPS TO REDUCE SECONDARY INJURY BY SENSING AND ADJUSTING EXCESS FORCE.



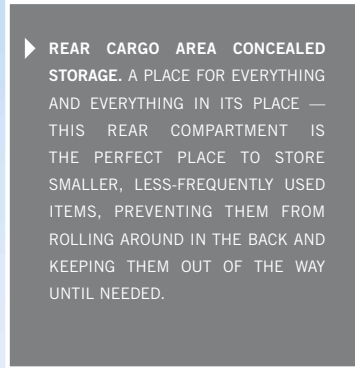
ONE SIZE FITS ALL



EASY RIDER. The Sportage makes bringing everything along incredibly convenient. Its multifunctional rear hatch lifts upward to allow easier access in tight spaces than traditional side-swinging doors. And the separate, flip-up tailgate glass provides a quick way to load groceries and smaller items, while earning a four-paw rating from your furry passengers.



◀ **ROOF RAILS** ALLOW YOU TO ADD THE NECESSARY ATTACHMENTS FOR SPORTING GEAR, EXTRA-LARGE LUGGAGE, YOUR BIKES AND MORE. THIS FEATURE IS ESPECIALLY GREAT FOR ROAD TRIPS OR THOSE TIMES WHEN YOU ALREADY HAVE A FULL LOAD OF PASSENGERS IN THE CABIN.



▶ **REAR CARGO AREA CONCEALED STORAGE.** A PLACE FOR EVERYTHING AND EVERYTHING IN ITS PLACE — THIS REAR COMPARTMENT IS THE PERFECT PLACE TO STORE SMALLER, LESS-FREQUENTLY USED ITEMS, PREVENTING THEM FROM ROLLING AROUND IN THE BACK AND KEEPING THEM OUT OF THE WAY UNTIL NEEDED.



◀ **FRONT-PASSENGER FLAT-FOLDING SEAT.** NEED TO BRING HOME YOUR SKIS AND THE TOTEM POLE YOU FOUND AT THE LODGE'S GIFT SHOP? THE SPORTAGE'S FRONT-PASSENGER SEAT FOLDS DOWN INTO A FULLY FLAT POSITION, FURTHER EXTENDING THE CARGO AREA FOR JUST SUCH OCCASIONS.



▶ **60/40 SPLIT-FOLDING REAR SEAT.** EASILY ACCOMMODATE LONG OR BULKY ITEMS SUCH AS BIKES, CAMPING GEAR, LUGGAGE — YOU NAME IT. TOGETHER WITH THE FRONT-PASSENGER FLAT-FOLDING SEAT, THE SPORTAGE PROVIDES YOU WITH A WIDE VARIETY OF CARGO OPTIONS.





WITH ITS REMARKABLY FLEXIBLE SEATING AND CARGO CAPABILITIES, the Sportage gives you room for everyone and everything. Its smart interior design features a flat-folding front passenger seat along with “fold and dive” rear seats that fold fully flat to increase cargo capacity. The rear seatback is also 60/40 split-folding to let you store long, bulky items and still have room for your friends. We’ve even cleverly stowed the spare tire horizontally under the cargo floor, so you can make the most of all that space — a feature you won’t find on most of the Sportage’s competitors.

LUXURY PACKAGE SHOWN

All cargo should be evenly distributed and secured, and never piled higher than the seatbacks.



INCREASE YOUR COMFORT LEVEL



LUXURY PACKAGE SHOWN

THE 2006 SPORTAGE MAKES YOU FEEL GOOD INSIDE in ways the competition can't. We're talking spacious. Well-designed. Well-appointed. And well beyond what you'd expect from a compact SUV.

MORE ROOM. With a longer wheelbase and larger overall exterior width than the Honda CR-V and the Toyota RAV4,* the Sportage's generous frame allows for an incredibly roomy interior — not to mention an incredibly comfortable ride.

MORE COMFORT. From short errands to long road trips, you and your front passenger will be quite comfortable in the 8-way adjustable driver's and 4-way adjustable passenger's bucket seats. Plus there's generous seating for three more adults in the back.

MORE PLUSH. The Sportage boasts standard bucket seats. But if you really want to sink into comfort, the LX-V6 gives you the option of adding our Luxury package, which gives you exceptionally comfortable, high-quality leather seating surfaces, heated front seats, leather-wrapped steering wheel and gear shift knob and power sunroof.



**“MOST APPEALING
ENTRY-LEVEL SUV
IN THE U.S.”**

Sportage was honoured by the J.D. Power and Associates 2005 Automotive Performance, Execution and Layout (APEAL) StudySM as the “Most Appealing Entry SUV.” The study, now in its 10th year, measures owners' delight with the design, content, layout and performance of their new vehicles.

*Comparison based on 2005 models.

A NEW STANDARD IN STANDARD



LUXURY PACKAGE SHOWN



◀ **POWER SUNROOF.** LET IN A LITTLE SUN, FRESH AIR OR A VIEW OF THE STARS WITH THE PUSH OF A BUTTON. THE LUXURY PACKAGE COMES STANDARD WITH A POWER SUNROOF AND SLIDING SUNSHADE — ANOTHER REASON TO LOVE YOUR SPORTAGE, DAY OR NIGHT.



◀ **OVERHEAD CONSOLE.** THIS EASY-TO-REACH CONSOLE INCLUDES TWO MAP LIGHTS FOR NIGHT TIME VIEWING AND AN ULTRA-HANDY SUNGLASSES HOLDER. JUST THINK — YOU MAY NEVER SIT ON YOUR SHADES AGAIN.



▶ **CRUISE CONTROL** COMES STANDARD ON THE CONVENIENCE PACKAGE. WITH EASY-TO-REACH BUTTONS FOR THE CRUISE CONTROL'S "SET," "CANCEL" AND "RESUME" FUNCTIONS, YOU'RE ALL READY TO MAKE THE MOST OF THE OPEN ROAD.



▶ **PREMIUM AUDIO SYSTEM.** THE SPORTAGE FEATURES AN AM/FM/CD AUDIO SYSTEM WITH 6 SPEAKERS, INCLUDING DOOR-MOUNTED TWEETERS, SO THAT HIGH-QUALITY MUSIC CAN KEEP YOU COMPANY ON ALL YOUR JOURNEYS, LONG OR SHORT.



▶ **REMOTE KEYLESS ENTRY.** A STANDARD FEATURE WITH THE CONVENIENCE PACKAGE PROVIDING BOTH SAFETY AND CONVENIENCE, REMOTE KEYLESS ENTRY GIVES YOU QUICK, EASY ACCESS TO YOUR VEHICLE, WITH THE ADDED SECURITY OF A PUSH-BUTTON PANIC ALARM.



◀ **CENTRE CONSOLE.** ONE OF THE MANY STANDARD STORAGE COMPARTMENTS YOU'LL FIND ON THE SPORTAGE, THE CENTRE CONSOLE GIVES YOU A CONVENIENT PLACE TO STASH YOUR CELL PHONE, PENS, SNACKS AND MORE. THE TOP ALSO DOES DOUBLE DUTY AS A PADDED ARMREST FOR FURTHER COMFORT.



◀ **POWER CONTROLS.** POWER WINDOWS, MIRRORS AND DOOR LOCKS ARE STANDARD. AND THE POWER WINDOWS EVEN INCLUDE A ONE-TOUCH DRIVER'S EXPRESS-DOWN FEATURE FOR ADDED CONVENIENCE.
▶ **SHOPPING BAG HOOK.** LOCATED IN THE FRONT-PASSENGER AREA FOR EASY ACCESS.



▶ **AIR CONDITIONING.** KEEP YOURSELF AND YOUR PASSENGERS FEELING AS COOL AS YOU LOOK WITH AIR CONDITIONING WHICH IS STANDARD WITH THE CONVENIENCE PACKAGE. LOCATED WITHIN EASY REACH ON THE SPORTAGE'S ERGONOMICALLY DESIGNED INSTRUMENT PANEL, WITH MULTIPLE SETTINGS TO GIVE YOU THE ULTIMATE IN CLIMATE CONTROL.



▶ **RECLINING REAR SEATS.** NO MORE NEED TO CALL "SHOTGUN". WITH THE SPORTAGE'S RECLINING REAR SEATS, YOUR FRIENDS WILL BE FIGHTING OVER WHO GETS TO SIT IN BACK. NOW EVERYONE CAN RELAX WHILE YOU TAKE THEM ON ANOTHER ADVENTURE.



▶ **7 kia.ca** VISIT OUR WEBSITE FOR ALL THE INFO YOU NEED, LIKE PERFORMANCE & WARRANTY DETAILS, FEATURES, PRICING AND DEALER LOCATOR. CHECK OUT THE 360° INTERIOR AND EXTERIOR VIEWS OF THE SPORTAGE, AND CALCULATE YOUR MONTHLY PAYMENT.



MORE POWER TO YOU

THE SPORTAGE GIVES YOU MORE POWER than many of its competitors. The LX-V6 comes with a potent 2.7-litre, 24-valve, 173-horsepower V6 engine. Plus it has an available all-wheel-drive system with electronically controlled Torque-On-Demand® for improved on or off-road traction. Yet along with all that power comes a remarkably civilized ride, thanks to its car-based



platform and dual-mode Steptronic transmission, which gives you the option of pedal-free manual shifting for a sportier driving experience. To smooth out all the bumps in the road, there's a fully independent MacPherson-strut front suspension and dual-link rear suspension with front and rear stabilizer bars. For stopping power,

there are 4-wheel disc brakes with standard ABS, plus a Traction Control System (TCS), which detects and corrects wheel spin for superior traction. And the standard Electronic Stability Program (ESP) provides improved directional stability to help you maintain control in the event of a severe skid.

ACCESSORIES

PLEASE ASK YOUR LOCAL DEALER ABOUT THE FULL LINE OF GENUINE KIA ACCESSORIES.



SIDE STEPS. ADD A RUGGED LOOK TO YOUR SPORTAGE, WHILE MAKING IT EASIER TO STEP IN AND OUT.



HOOD PROTECTOR. HELPS PROTECT YOUR HOOD FROM FLYING DEBRIS.



TRAILER HITCH. INCREASE YOUR CARGO CARRYING CAPACITY WITH THE ADDITION OF A TRAILER HITCH.



REAR SPOILER. DESIGNED TO COMPLETE THE AGGRESSIVE LOOK OF YOUR SPORTAGE.

FEATURES

LX

- ◆ 2.0 L 4-cylinder CVVT engine
- ◆ Front-wheel-drive system (FWD)
- ◆ 5-speed manual transmission
- ◆ 16" alloy wheels, P215/65 R16
- ◆ Dual front airbags
- ◆ Dual side-impact airbags
- ◆ Front and rear side curtain airbags
- ◆ 4-wheel anti-lock brakes (ABS)
- ◆ 4-wheel disc brakes
- ◆ Electronic Stability Program (ESP)
- ◆ Traction Control System (TCS)
- ◆ Anti-theft engine immobilizer
- ◆ Power windows, mirrors and door locks
- ◆ Multi-adjustable fold-flat rear seats
- ◆ Fold-flat front passenger seat
- ◆ AM/FM/CD 6-speaker audio
- ◆ Front windshield wiper de-icer
- ◆ Rear wiper
- ◆ Rear split-hatch liftgate with flip-open glass
- ◆ Remote fuel door release
- ◆ Centre console with storage box
- ◆ Battery saver
- ◆ Front and rear mudguards
- ◆ Floor mats

LX CONVENIENCE

(IN ADDITION TO LX FEATURES)

- ◆ Available 4-speed Steptronic automatic transmission
- ◆ Air conditioning
- ◆ Cruise control
- ◆ Remote keyless entry with alarm
- ◆ Door courtesy lamp
- ◆ Brushed metal grain interior accents
- ◆ Deep-tint privacy glass
- ◆ Heated outside mirrors
- ◆ Fog lamps
- ◆ Roof rack
- ◆ Deluxe door scuff plates

LX AWD CONVENIENCE

(IN ADDITION TO LX CONVENIENCE FEATURES)

- ◆ All wheel drive system (AWD) with electronically controlled Torque-On-Demand®
- ◆ 5-speed manual transmission

LX-V6

(IN ADDITION TO OR IN PLACE OF LX CONVENIENCE FEATURES)

- ◆ 2.7 L 6-cylinder DOHC engine
- ◆ Front-wheel-drive system (FWD)
- ◆ 4-speed Steptronic automatic transmission
- ◆ Bodyside moulding
- ◆ Dual exhaust tail pipes

LX-V6 AWD

(IN ADDITION TO LX-V6 FEATURES)

- ◆ All-wheel-drive system (AWD) with electronically controlled Torque-On-Demand®

LX-V6 AWD WITH LUXURY PACKAGE

(IN ADDITION TO LX-V6 AWD FEATURES)

- ◆ Leather seats
- ◆ Heated front seats
- ◆ Power sliding and tilting sunroof
- ◆ Leather-wrapped steering wheel and gear shift knob
- ◆ Cargo net

SPECIFICATIONS

COLOURS

ENGINE	LX & LX CONVENIENCE	LX-V6 & LUXURY PACKAGE
Type	2.0 L, In-line 4-cylinder, Aluminum head	2.7 L, V6, Aluminum block and head
Valve gear	DOHC, 4 valves per cylinder, CVVT	DOHC, 4 valves per cylinder
Displacement	1,975 cc/120.52 cu. in.	2,656 cc/162.08 cu. in.
Compression ratio	10.0:1	10.0:1
Horsepower	140 HP @ 6000 rpm	173 HP @ 6000 rpm
Torque	136 lb.-ft. @ 4500 rpm	178 lb.-ft. @ 4000 rpm
Transmission	5-speed manual 4-speed Steptronic automatic (available)	4-speed Steptronic automatic

DIMENSIONS (EXTERIOR AND INTERIOR)

Wheelbase	2,630 mm (103.5 in.)
Track (front/rear)	1,540/1,540 mm (60.6/60.6 in.)
Length	4,350 mm (171.3 in.)
Width	1,800 mm (70.9 in.)
Height	1,695 mm (66.7 in.)
Ground clearance	195 mm (7.7 in.)
Head room (front/rear)	1,033/1,000 mm (40.7/39.4 in.)
Shoulder room (front/rear)	1,440/1,430 mm (56.7/56.3 in.)
Leg room (front/rear)	1,070/945 mm (42.1/37.2 in.)
Hip room (front/rear)	1,386/1,388 mm (54.6/54.6 in.)
Passenger volume	2,943 L (103.9 cu. ft.)
Cargo volume	667.4 L (23.6 cu. ft.)
Cargo volume, rear seats folded down	1,886.5 L (66.6 cu. ft.)

CURB WEIGHT

5-speed manual	2.0 L I-4 FWD: 1,465 kg (3,230 lb.)
	2.0 L I-4 AWD: 1,547 kg (3,411 lb.)
4-speed automatic	2.0 L I-4 FWD: 1,476 kg (3,254 lb.)
	2.7 L V6 FWD: 1,520 kg (3,351 lb.)
	2.7 L V6 AWD: 1,600 kg (3,527 lb.)

BODY AND CHASSIS

Layout	Front engine
Body type	Steel unitized
Front suspension	Independent, MacPherson struts, coil springs
Rear suspension	Independent, dual link
Steering	Power-assist, rack-and-pinion

BRAKES

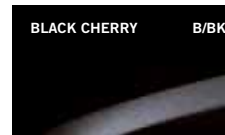
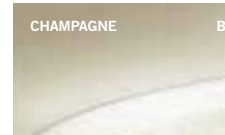
Type	Dual diagonal, split circuit, power-assisted
Front	279 mm (11.0 in.) vented discs
Rear	262 mm (10.3 in.) vented discs (FWD) 284 mm (11.2 in.) vented discs (AWD)
ABS	4-wheel anti-lock brakes

TIRES

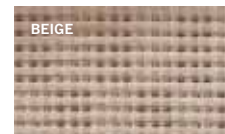
Tires	P215/65 R16
-------	-------------

FUEL ECONOMY (CITY/HIGHWAY L / 100 KM)

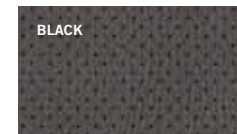
5-speed manual	LX & LX-Convenience (FWD):	10.6/7.8 L (26.7/36.2 mpg)
	LX & LX-Convenience (AWD):	11.2/8.2 L (25.2/34.4 mpg)
4-speed automatic	LX & LX-Convenience (FWD):	11.1/8.2 L (25.4/34.4 mpg)
	LX-V6 & Luxury package (FWD):	12.1/8.5 L (23.4/33.2 mpg)
	LX-V6 & Luxury package (AWD):	12.4/9.4 L (22.8/30.1 mpg)



INTERIOR FABRIC COMBINATIONS ARE INDICATED BY:
B = BEIGE INTERIOR BK = BLACK INTERIOR



SPORTAGE CLOTH



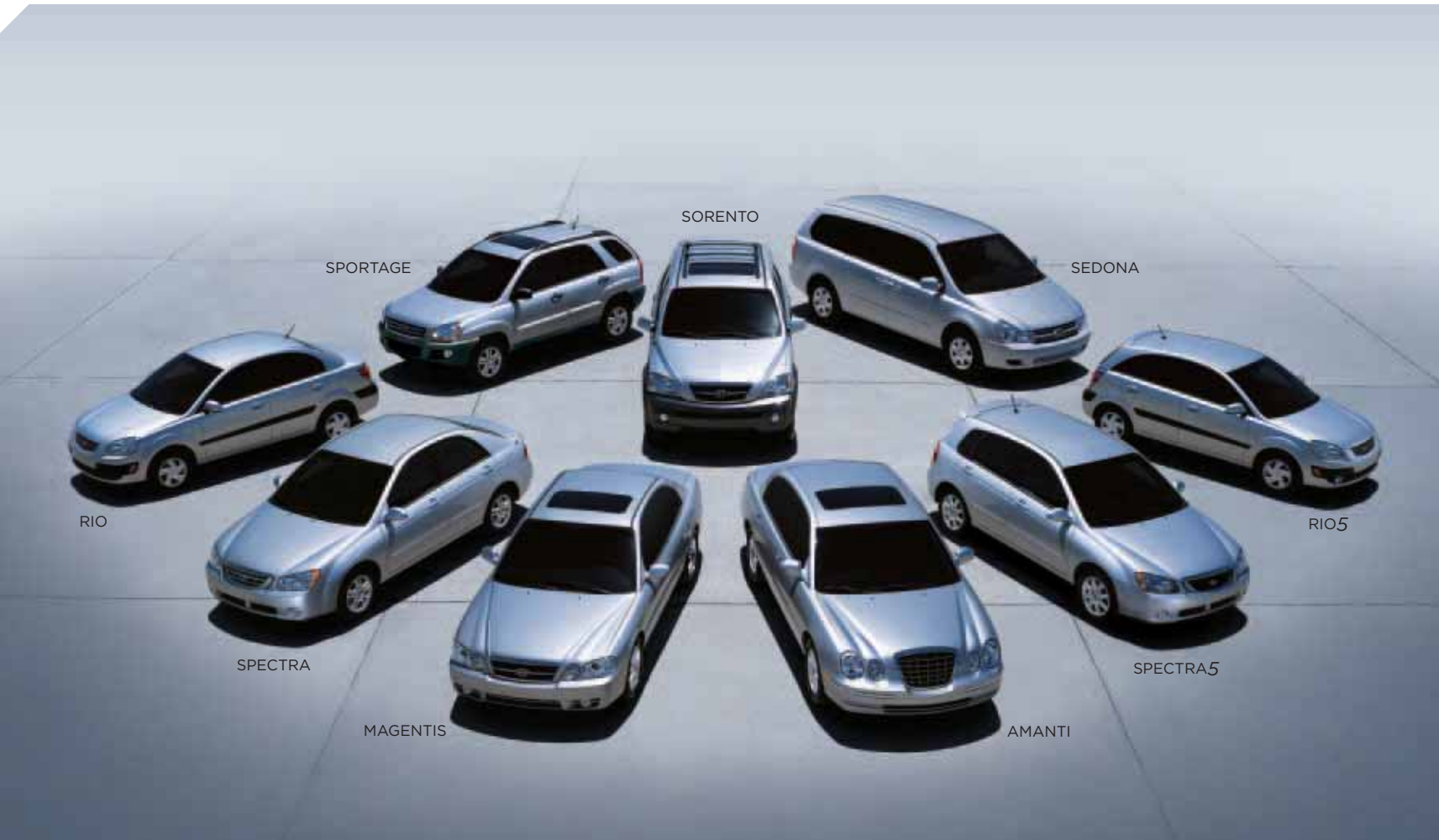
SPORTAGE LEATHER

PEACE OF MIND.



TOTAL CARE OWNERSHIP COVERAGE

- 5 YEAR/100,000 KM WORRY-FREE COMPREHENSIVE WARRANTY
- 5 YEAR/100,000 KM POWERTRAIN WARRANTY
- 5 YEAR/100,000 KM EXTRA CARE ROADSIDE ASSISTANCE



Kia Canada Inc., Mississauga, Ontario, L5R 4J5 1-877-542-2886

All information contained herein was accurate and correct at the time of printing. Kia Canada Inc. reserves the right to make changes at any time without notice, and without any obligations as to colours, materials, specifications, features, accessories, packages, models and any applicable programs. Some vehicles shown may include optional equipment or may not be exactly as shown. Kia Canada Inc., by the publication and dissemination of this material, does not create any warranties, either expressed or implied, to any Kia products. See your Kia dealer or website for further details.

©2005 Kia Canada Inc. Reproduction of the contents of this material without the expressed written approval of Kia Canada Inc. is prohibited

Part # 99999-03FME06

