

MAZDA6 SPORT WAGON



MAZDA6 SPORT HATCHBACK



MAZDA5



MX-5



MAZDA6



MAZDA3 SPORT



MAZDA3



TRIBUTE



RX-8



MPV



B-SERIES



2006 **mazda** MPV

SOUL

BODY OF A MINIVAN.

OF A SPORTS CAR.



zoom-zoom



Get more detailed information on your Mazda MPV. Check out our website at www.mazda.ca for specifications and features, option packages, pricing, financing, to book a test-drive and find a dealer near you. Mazda Canada Inc., 55 Vogell Road, Richmond Hill, Ontario L4B 3K5 Printed in Canada Part No. 9999-92-MV26-EN



REDISCOVER THE EMOTION OF MOTION.

All children instinctively know it. A few adults still remember it. One unique car company refuses to outgrow it. In grown-up language, it means the exhilaration and liberation that comes from experiencing sheer motion. But as usual, children put it much better. And simply call it "zoom-zoom." We practice it every day. It's why we build the kind of cars we do. And why you'll find the soul of a sports car engineered into everything we make ... including the Mazda MPV.

In minivans, room is a given. But true car-like performance? That's far less common. Treat yourself to the Mazda Test-Drive Experience, and you'll soon discover the responsive acceleration and steering, superb braking, and surefooted handling that say this minivan is a Mazda, through and through.





A. WILLING WORKHORSE. The Mazda MPV boasts a 3.0-litre DOHC 24-valve V6. With 200 hp and 200 lb. ft. of torque on tap, you've got plenty of power to haul passengers, cargo or even a small trailer. **B.** STOPPING POWER. For braking performance you can count on, power-assisted, ventilated 4-wheel disc brakes and an Anti-lock Brake System (ABS) with Electronic Brake Force Distribution (EBFD) come standard on both the GS and GT models.

IT MOVES PEOPLE.

To those who think a minivan automatically consigns its driver to a life of motoring monotony, we offer a lively rebuttal: the 2006 Mazda MPV. Within its distinctive exterior lives the spirit of "zoom-zoom", expressed through a powertrain so responsive, it's downright exhilarating. Plus handling that the automotive press has called "nimble" and "fun". The MPV driving experience starts with a 24-valve, 200-hp V6 engine and electronically controlled 5-speed automatic transmission, and continues with confidence-inspiring handling provided by gas-filled struts and shocks, front and rear stabilizer bars and precise, power-assisted rack-and-pinion steering. In fact, with the Mazda MPV's athletic profile, intuitive handling characteristics and pulse-quicken performance, what you've really got is this: The body of a minivan. And the soul of a sports car

CARGO. AND EMOTIONS.



THE MINIVAN A

DRIVING ENTHUSIAST CAN LOVE.



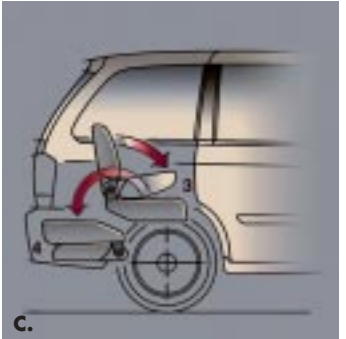
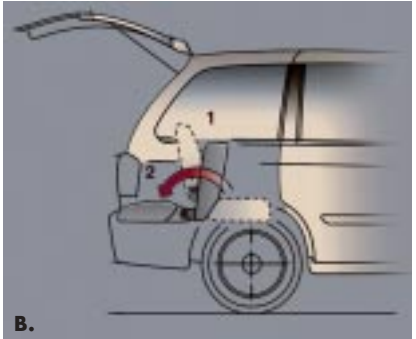
Great design is a Mazda tradition; a fact demonstrated convincingly by the 2006 Mazda MPV. Sharing the same potent "zoom-zoom" gene pool as the RX-8, MX-5 Miata and the Mazda3, the MPV is, quite simply, a total blast to drive. Agile, responsive and versatile, the MPV takes all the virtues of a minivan and adds a healthy dose of driving exhilaration to the mix. Unique in its class, the MPV is something you must experience from the driver's seat.



EVERY PASSENGER TRAVELS

FIRST-CLASS.

Given Mazda MPV's spirited, sensibly-sized nature, the term "minivan" hardly does it justice. You see, MPV is roomy, well-appointed and way more exhilarating than those ponderous, hard-to-maneuvre people-movers. Simply put, this versatile, seven passenger Mazda can move your emotions as easily as it can carry your family and gear. Front to back, MPV is filled with first-rate features like ingeniously engineered, multi-function 2nd and 3rd row seats. A deep cargo well behind the rear seat for your groceries and gear. Not to mention a wide array of insightfully-placed storage compartments, courtesy lamps and beverage holders. Every cubic centimetre of this vehicle's interior is designed to exceed your present notion of minivan. If you're looking for outstanding comfort, practicality and flexibility, please, take a seat.



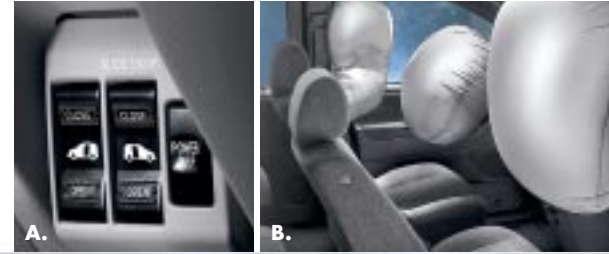
A. SLIDE SHOW. The MPV's 2nd row bench seat features a unique Side-by-Slide™ design that separates into two reclining captain's chairs, with up to four fold-down armrests. **B. YOU'LL SIMPLY FLIP.** You can easily flip the MPV's Tumble-Under™ rear bench seat backwards to create convenient "tailgate" seating that's ideal for outdoor activities.* **C. SPACE MAKER.** Creating lots of extra cargo space couldn't be easier. The MPV's spring-assisted Tumble-Under™ rear bench seat quickly and easily folds flat into the floor with the pull of a strap.

*Be sure your MPV is in park with the engine off.

A. GRAND OPENINGS. Power rear sliding doors (standard on the GT and available on the GS) open or close at the touch of a button on the dash, door pillars and key-less remote. A "power off" dashboard switch helps prevent unintended operation.

B. SAFETY ZONE. Dual front air bags* are standard on all models. Side air bags are available on the GS with Sport package and the GT model.

*Always wear your safety belt and secure children in the rear seats.



Virtually everywhere the eye falls inside the MPV, there's something to impress. It might be the high quality of materials used throughout the cabin. The exemplary fit and finish. The meticulous craftsmanship, or perhaps the obvious attention to thoughtful details. Take the MPV's steering wheel, for example. It not only tilts for extra comfort, but also includes built-in audio functions. An ergonomically contoured driver's seat with an adjustable lumbar support is standard on the GS and GT models. Instrument gauges are large and easy to read. Controls are intuitively placed to minimize driver distraction. And of course, power windows, mirrors and door locks are standard. As is air conditioning with front zone controls. The MPV's cockpit design isn't about making a fashion statement. It's about enhancing communication between man and machine. No gimmickry here – just form, beautifully following function.

RESERVATIONS.



MOVE MORE

OF WHAT MOVES YOU.

A. BIG BIN. You can easily create a cavernous 3,596-litres of cargo volume (without moonroof) simply by folding away MPV's 3rd row seat and removing its 2nd row seats. **B.** UPS AND DOWNS. Both of the MPV's sliding doors include power up-and-down windows. Now there's a breath of fresh air. **C.** ENTERTAINMENT, MPV STYLE. MPV's available rear-seat entertainment system plays both DVDs and MP3 audio CDs and includes a flip-down seven-inch colour monitor, two sets of wireless headphones plus a remote control.

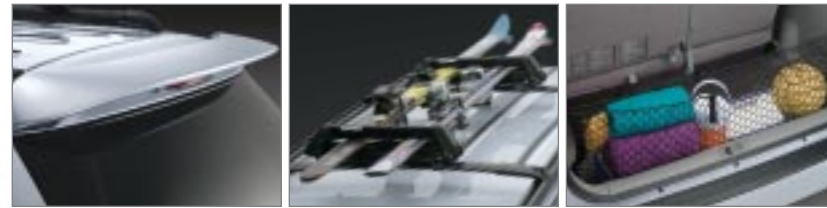
Compare the Mazda MPV to ordinary minivans and its "smart size" versus "super size." The MPV delivers seven-passenger versatility in a shorter, lighter, more agile and fun-to-drive design.

Every Mazda MPV comes equipped with an abundance of driving fun, but behind-the-wheel enjoyment comes much easier when it's accompanied by peace of mind. That's one reason why the MPV was designed with front and rear crumple zones as well as front safety belt pretensioners and load limiters, side door impact protection beams and ISOFIX child seat anchors. Four-wheel disc brakes and an Anti-lock Brake System (ABS) with Electronic Brake Force Distribution (EBFD) are standard on the GS and GT models. Dual front side air bags are standard on the GT, and are available on the GS with Sport package. Not to mention a Five-Star crash safety rating, the highest possible, in U.S. government tests for driver and passenger protection in frontal and side impacts.* What's more, add a trailer hitch and wiring harness (offered only as accessories) to the Towing package and tow up to 1,361 kg (3,000 lbs.). So go ahead – bring that favourite motorcycle or watercraft along for the ride without worry. Because we've definitely got your back.

*Tests conducted on the 2006 Mazda MPV. Highest protection rating possible for frontal and side impacts by U.S. NHTSA.



ACCESSORIES



Pictured above from left to right: Rear spoiler, ski attachment, cargo net.

- Rear spoiler
- Wheel locks (set of 4)
- Roof luggage with stretch net
- Touch-up point
- Bike attachment
- Cargo mat
- Fog lights
- Engine block heater
- Front mask
- Roof rack
- Roof carrier cargo box – long (for skis) or short (for luggage)
- Hood deflector
- Cassette player
- 6-disc in-dash CD changer
- MiniDisc player
- Cargo net
- Trailer hitch (class II)
- DVD entertainment system
- Ski attachment
- 16" alloy wheels (polished)
- Aluminum pedal set

For further information please refer to the Mazda MPV Accessories Brochure. Mazda notes that all Genuine Mazda Accessories, if installed by your Mazda Dealer prior to or at an initial vehicle retail delivery, carry the same new-vehicle warranty as the Mazda MPV.

EXTERIOR COLOURS



ARCTIC WHITE



SUNLIGHT SILVER METALLIC



BRILLIANT BLACK



INDIGO BLUE MICA



SPARKLING GOLD MICA



NORDIC GREEN MICA



GALAXY GREY MICA

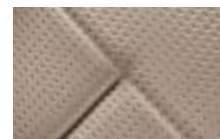
COLOUR COMBINATIONS

	EXTERIOR		INTERIOR	
	GX & GS (CLOTH)	GT (LEATHER)	GX & GS (CLOTH)	GT (LEATHER)
Arctic White	Beige	Beige	Beige	Beige
Sunlight Silver Metallic	Grey	Grey	Grey	Grey
Brilliant Black	Grey	Grey	Grey	Grey
Indigo Blue Mica	Grey	Grey	Grey	Grey
Sparkling Gold Mica	Beige	Beige	Beige	Beige
Nordic Green Mica	Beige	Beige	Beige	Beige
Galaxy Grey Mica	Grey	Grey	Grey	Grey

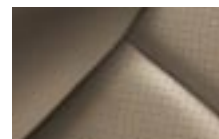
INTERIOR COLOURS



BEIGE CLOTH (GX)



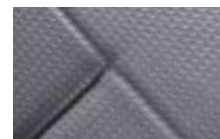
BEIGE CLOTH (GS)



BEIGE LEATHER (GT)



GREY CLOTH (GX)



GREY CLOTH (GS)



GREY LEATHER (GT)

MAZDA MPV WHEELS



15" steel wheels with full wheel covers



15" alloy wheels



16" alloy wheels



17" alloy wheels



For peace of mind motoring, we've created the Mazda Added Protection Plan (M.A.P.). M.A.P. complements your Mazda Limited Warranty for up to 7 years or 160,000 km, and protects you from unexpected repair expenses and the rising cost of repairs. All M.A.P. plans include Personal Budget and Repair Inflation Protection. In addition, all M.A.P. plans include Premium Roadside Assistance, which extends the roadside assistance coverage offered during the new vehicle limited warranty period throughout the M.A.P. term. The Premium Roadside Assistance offers Towing, Winching, Battery Boost, Out-of-Fuel Coverage, Tire Service, Lockout Service, Emergency Travel Expense Reimbursement and Travel Planning, and Dealer Locator. Should you ever decide to sell your Mazda vehicle, M.A.P. is transferable to future owners and will enhance the resale value of your vehicle. The Mazda Added Protection Plan is fully backed and administered by Mazda Canada Inc. For more information, please contact your Mazda Dealer.



Ask your dealer about Mazda's competitive program for recent university and college graduates.

Product changes and options availability: Following publication of this brochure, certain changes in standard equipment, options, prices and the like, or product delays may have occurred which would not be included in these pages. Your Mazda Dealer is your best source for up-to-date information. Mazda reserves the right to change product specifications at any time without incurring obligations. Options and accessories shown or described in this brochure are available at extra cost and may be offered only in combination with other options or subject to additional ordering requirements or limitations. E. & O. E.



ENGINE			
Type	3.0L DOHC 24-valve V6	Compression ratio	10.0:1
Displacement	2,967 cc	Fuel system	Multi-port Electronic Fuel Injection (EFI)
Horsepower SAE net	200 @ 6,200 rpm	Recommended fuel	Regular (unleaded)
Torque, SAE net lb. ft.	200 @ 3,000 rpm		
DRIVETRAIN			
Type	Front engine/front wheel drive		
Transmission	5-speed electronically controlled automatic transmission with overdrive, high efficiency torque converter and hill-climbing control		
CHASSIS			
Frame	Monocoque		
Front suspension	Independent MacPherson strut located by control arm, coil springs and stabilizer bar		
Rear suspension	Torsion beam with coil springs and stabilizer bar		
Steering	Rack-and-pinion with engine-rpm-sensing variable power-assist		
Minimum turning circle	11.4 m (curb-to-curb)		
Brakes	Front:	274 mm x 28 mm power-assisted ventilated disc brakes with 2 pistons	
	Rear:	254 mm x 50 mm power-assisted drum brakes (GX) 286 mm x 18 mm power-assisted ventilated disc brakes (GS and GT)	
	4-wheel, 4 sensor, 3-channel Anti-lock Brake System (ABS) with Electronic Brake Force Distribution (EBFD) (GS and GT)		
Curb weight (kg)	1,691 without rear A/C; 1,699 with rear A/C		
CAPACITIES			
Seating	7 persons	Fuel tank	75L
Washer fluid tank	5.5L		

2006 MAZDA MPV FEATURES

ENGINEERING FEATURES	GX	GS	GT
Power-assisted ventilated front disc/rear drum brakes	S	–	–
4-wheel ventilated power-assisted disc brakes	–	S	S
4-wheel, 4-sensor, 3-channel Anti-lock Brake System (ABS) with Electronic Brake Force Distribution (EBFD)	–	S	S
Traction control	–	SP	S
Towing package (A/T oil cooler)	TP	S	S
WHEELS AND TIRES			
15" steel wheels with full wheel covers; 205/65R15 all-season tires	S	–	–
15" alloy wheels; 205/65R15 all-season tires	TP	–	–
16" alloy wheels; 215/60R16 all-season tires	–	S	–
17" alloy wheels; 215/60R17 all-season tires	–	SP	S
EXTERIOR FEATURES			
Body-coloured bumpers and rear gate garnish	S	S	S
Body-coloured door handles and body side mouldings	S	S	S
Power rear sliding doors	–	O	S
Body-coloured front grille	–	GFX	S
Front/rear air dam, side sill extensions, fog lights and large size exhaust	–	GFX	S
Black housings on front and rear lights	–	GFX	S
Power operated heated door mirrors with breakaway folding function	S	S	S
Front variable intermittent wipers; Rear intermittent wiper	S	S	S
Power glass moonroof with sunshade	–	–	S
Privacy glass on rear door glass, quarter glass and rear gate glass	TP	S	S
COMFORT AND CONVENIENCE			
AM/FM/CD player with 4 speakers and 2 tweeters	S	S	–
AM/FM stereo with 6-disc in-dash CD changer, and premium audio sound system (includes 9 speakers with an 80w amp. subwoofer)	–	SP	S
Steering wheel-mounted audio controls; Tilt steering	S	S	S
Cruise control	TP	S	S
Front air conditioning	S	S	S
Rear air conditioning	–	O/SP	S
Micron air filter	S	S	S
Heater duct for 2nd row	S	S	S
Rear heater (independent of front heater) with separate controls	S	S	S
Power door locks with 2-stage unlocking	S	S	S
Keyless entry system with retractable key, welcome mode, panic and burglar alarm (2 transmitters)	–	S	S
Power windows (front/rear) with driver's one-touch down feature	S	S	S
Power windows switch illumination (driver side)	S	S	S
Covered driver and passenger illuminated vanity mirrors	–	–	S
Front map lamp; Centre dome lamp (incandescent lamp)	S	S	S
Cargo room lamp (lift gate) with switch (on/off/door)	S	S	S
Cupholders (7 total: 2 front, 2 middle, 3 rear); front and rear door bottle holders	S	S	S
Illuminated ignition key surround	S	S	S
Assist grips (2 – front passenger; 2 – 2nd row; 1 – 3rd row)	S	S	S
Coat hooks (2 – 2nd row; 1 – 3rd row)	S	S	S
Cold Package (larger washer tank, larger battery, and rear heater)	S	S	S

Towing package: Cruise control, overhead console, 15" alloy wheels, Towing package (A/T oil cooler), privacy glass and windshield sunshade band. Available on GX model.

Sport package: 215/60R17 all-season tires, 17" alloy wheels, 6-disc in-dash CD changer with 9 speakers and subwoofer, dual front side air bags, traction control, rear air conditioning and leather-wrapped steering wheel. Available on GS model. (Requires GFX package)

GFX package: Front/rear air dam, side sill extensions, large size exhaust, body coloured front grille and fog lights. Available on GS model. (Requires rear A/C or Sport package)

EXTERNAL DIMENSIONS (mm)			
Wheelbase	2,840	Track (fr/rr)	1,540/1,545
Overall length	4,807	Overall height	1,745 (with 15" and 16" tires)
	4,813 (with GFX Package)		1,755 (with 17" tires)
Overall width	1,832	Ground clearance	133

INTERNAL DIMENSIONS	
Headroom (fr/2nd/3rd) (mm)	1,041/999/954 (without moonroof) 991/949/954 (with moonroof)
Legroom (fr/2nd/3rd) (mm)	1,040/939/903
Shoulder room (fr/2nd/3rd) (mm)	1,520/1,540/1,476
Cargo volume behind 3rd seat (L)	487
Cargo volume with 3rd seat folded (L)	1,546 (without rear A/C); 1,521 (with rear A/C)
Cargo volume with 2nd/3rd seats folded (L)	3,596 (without moonroof); 3,526 (with moonroof)
Passenger volume (L)	3,815
Total volume (L)	4,299

FUEL ECONOMY RATINGS (L/100km)	
City	13.3
Highway	8.8

TOWING CAPACITY (kg)	
	Maximum Total Trailer Weight
Standard	907
With Towing package	1,361

SEAT AND TRIM	GX	GS	GT
Front row seats: 8-way power adjustable driver's seat	–	–	S
Driver seat lift function (front and rear tilt function)	S	S	S
Lumbar support (driver)	–	S	S
Seat side table – passenger	–	SP	S
Armrest – driver and passenger	S	S	S
Second row seats: Separate seat (2 passengers), right hand seat with right/left sliding function	S	S	S
Split seat sliding function (back to forward)	–	S	S
Reclining function	S	S	S
Horizontal folding function without seatback table	S	–	S
Horizontal folding function with seatback table	–	S	–
Removable function	S	S	S
Armrests (1 on GX; 4 on GS and GT)	S	S	S
Third row seats: Bench seat (seating capacity = 3)	S	S	S
Under floor fold-down function with spring assist (resulting in flat cargo floor)	S	S	S
Horizontal folding function	S	S	S
Rear facing function	S	S	S
Reclining function	S	S	S

Leather-wrapped steering wheel	–	SP	–
Leather-wrapped parking brake handle with chromed button	–	–	S
Adjustable headrests (for outboard positions)	S	S	S
Cloth upholstery	S	S	–
Leather upholstery	–	–	S
Chromed inner door handles	–	–	S
Front door pockets (driver and passenger)	S	S	S

INSTRUMENT PANEL AND STORAGE			
Carbon-like treatment on centre panel	–	–	S
Chromed accents on ventilator bezels	–	–	S
Tachometer; liquid crystal odometer and twin tripmeter	S	S	S
Rope hooks (6)	S	S	S
Illuminated lockable glove compartment	S	S	S
Rear gate 12 volt accessory power outlet	–	S	S
Covered lower dash centre console with storage box	S	S	S
Front passenger under seat storage compartment	S	S	S
Overhead console (with 2 storage compartments) (not available with moonroof)	TP	S	–

SAFETY AND SECURITY			
Dual front air bags	S	S	S
Dual front side air bags	–	SP	S
Engine immobilizer theft-deterrent system; Anti-theft alarm system	–	S	S
Side door impact protection beams	S	S	S
Front safety belt pretensioner and load limiter	S	S	S
ISOFIX child safety-seat anchors (two in 2nd row, one in 3rd row)	S	S	S
1st and 2nd row adjustable safety belt anchors	S	S	S
2nd row ALR 3-point safety belts	S	S	S
3rd row ALR 3-point safety belts for outboard positions	S	S	S
3rd row lap belt for centre position	S	S	S

S = Standard O = Optional – = Not available GFX = GFX package TP = Towing package SP = Sport package