

2006 **mazda**5



MAZDA6 SPORT WAGON



MAZDA6 SPORT HATCHBACK



MAZDA5



MX-5



MAZDA6



ALWAYS THE

SOUL
OF A SPORTS CAR.

MAZDA3 SPORT



MAZDA3



TRIBUTE



RX-8



MPV



B-SERIES



NEVER LOSE YOUR COOL.



zoom-zoom



Get more detailed information on your Mazda5. Check out our website at www.mazda.ca for specifications and features, option packages, pricing, financing, to book a test-drive and find a dealer near you.
Mazda Canada Inc., 55 Vogell Road, Richmond Hill, Ontario L4B 3K5 Printed in Canada Part No. 9999-92-MZ56-EN



REDISCOVER THE EMOTION OF MOTION.

All children instinctively know it. A few adults still remember it. One unique car company refuses to outgrow it. In grown-up language, it means the exhilaration and liberation that comes from experiencing sheer motion. But as usual, children put it much better. And simply call it "zoom-zoom." We practice it every day. It's why we build the kind of cars we do. And why you'll find the soul of a sports car engineered into everything we make ... including the all-new Mazda**5**.

The first true Multi-Activity Vehicle, Mazda**5** is practical, yet sized for manoeuvrability. It cleverly combines seating for six and fold-flat cargo capability with performance that's pure Mazda. Treat yourself to the Mazda Test Drive Experience. Get behind the wheel of the all-new Mazda**5** and you'll soon remember why you fell in love with the road in the first place.

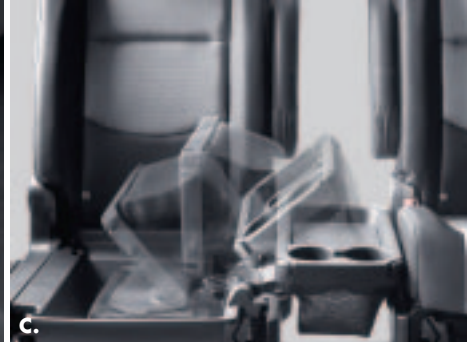


SOMEBODY HAD TO DO IT FIRST.

Breakthrough designs are a Mazda tradition. And the all-new Mazda5 is no exception. Emerging from the same "zoom-zoom" gene pool as the Mazda3, MX-5 Miata and RX-8, Mazda5 is Canada's first true Multi-Activity Vehicle – a category-defying design created expressly for your multi-tasking lifestyle. From the Mazda5's stylish good looks and inspired versatility to its insightful safety features and spirited, soul-of-a-sports-car performance, it will ensure you never lose your cool.



A. Behind the scenes, a handy cargo area tray helps organize essentials. **B.** Integral cup holders are just one refreshing feature of the built-in centre console. Another is the covered, double-bottomed storage bin that welcomes your cell phone, sunglasses and CDs. **C.** The GT interior adds a multi-purpose fold-out table/cargo bin. **D.** For quick and easy access to rear row seating, both centre row seats boast a convenient, one-touch "walk-in" feature. **E.** In a tight parking space or juggling a week's dry cleaning, the Mazda5's easy gliding sliding side doors are a thoughtful touch.



Like some uncanny commuter chameleon, Mazda5 takes versatility to a whole new place... and pulls off some truly radical tricks. Its spacious interior, for example, welcomes three couples as effortlessly as it does a couple of week's groceries, snowboards, mountain bikes or vacation luggage.* Its three rows of independently folding seats give you the flexibility to create a virtually flat cargo floor over 1,520 mm (5 feet) long. Loading and unloading are also a snap – thanks to a light liftgate with dual height positions. And expansive sliding side door openings offer a big-time improvement over small wagons and SUVs. Simply put, Mazda5 fits your multi-faceted lifestyle like nothing else on earth.



*Cargo and load capacity limited by weight and distribution. Please remember to properly secure all cargo.



VERSATILITY
TAKEN TO NEW HEIGHTS.



INFORMATION.

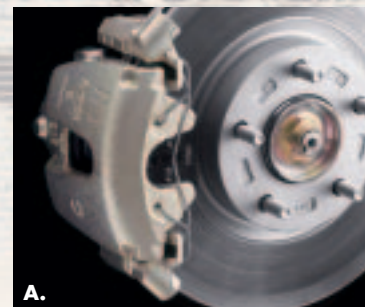
MORE INSIDE

Mazda didn't invent 6-passenger seating. But the Mazda5's perceptive interior refinements definitely raise the bar. For a better all-around view, both centre and rear rows provide elevated, "theatre style" seating. And for generous legroom, both centre row seats provide nearly 15 cm (6 inches) of travel. Even its low, sedan-like stance is beneficial, allowing passengers to actually slide into the vehicle instead of climb. Naturally, side door impact protection beams are standard. As are 3-point safety belts for all occupants, child-proof rear door locks and integrated child seat anchors.

FUN-TO-DRIVE

The reason why a Mazda5 is such a kick to drive is simple. It rides on a refined sports sedan chassis – one it shares with the award-winning Mazda3. So precise steering and quick, agile handling are second-nature. The Mazda5's well thought out design also leaves it about half a ton lighter than some competitors. While its spirited engine generates more standard power than vehicles like the Jetta or Matrix. And thanks to its tight turning circle (10.6 metres), the Mazda5 is a breeze to pilot through a crowded street or into a tight parking space. Hey, some people just know how to have fun.

TAKES A



A. To promote linear, fade-resistant stops, power-assisted 4-wheel disc brakes are standard on every Mazda5, as are an advanced Anti-lock Brake System (ABS) with Electronic Brake Force Distribution (EBFD). **B.** Four-wheel independent suspension and precise, power-assisted rack-and-pinion steering help endow the Mazda5 with confidence-inspiring handling. **C.** The Mazda5's sophisticated 2.3-litre, DOHC, 16-valve, all-aluminum 4-cylinder engine boasts sequential-valve timing, 157-hp and responsive performance. **D.** A slick-shifting 5-speed manual gearbox is standard, while the available 4-speed *Sport* mode automatic transmission also provides the fun of manually shifting at the flick of a wrist.



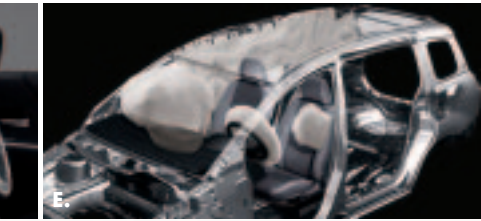
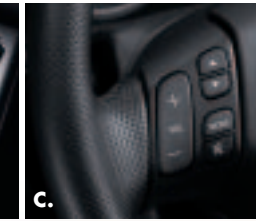
QUICK TURN

FOR THE BETTER.



A. The Mazda5 GS includes an AM/FM/CD player with 4 speakers. The GT includes 6 speakers. **B.** Power windows, door locks and mirrors are standard. **C.** Steering wheel-mounted audio controls are standard. **D.** For added comfort, the Mazda5's steering wheel tilts and telescopes. **E.** For optimum passenger safety, every Mazda5 includes dual front air bags,* driver and front passenger safety belt pretensioners, load limiters, and whiplash-reducing adjustable front seat headrests.

*Always wear your safety belt and secure children in rear seats.



Regardless of where you sit on these issues, the Mazda5 serves up an innovative fusion of fun, versatility and value. Inside, in fact, you'll quickly appreciate how its ingeniously designed interior allows you to juggle me-time, couple-time and family-time. All without giving up your passion for driving or breaking a sweat. The Mazda5 GS version comes surprisingly well-equipped for work or play. The GT version adds more insightful touches like a leather-wrapped steering wheel, AM/FM/CD player with 6 speakers, a handy centre row table/cargo bin, even a power moonroof. Whichever Mazda5 you choose, you can rest assured that safety was a priority from the word go. For example, we went with a "Triple H" construction, unibody design that incorporates three "H" shaped structures in the floor, cab sides and roof. This enhances body rigidity for better handling, stability, and quietness, as well as crash protection. Of course, dual front air bags are standard on Mazda5. And so are important features like side door impact protection beams, brake assist, child-proof rear door locks and whiplash-reducing adjustable front seat headrests. Dual front side air bags and dual side air curtains with coverage for all occupants are also standard on the GT model. Whichever way you go, the all-new Mazda5 Multi-Activity Vehicle delivers a more exhilarating way to exercise both your self-expression and your self-control.

HOOKS UP WITH SELF CONTROL.

SELF-EXPRESSION

ACCESSORIES



Pictured from left to right: Roof rack, cargo net, fog lights.

- Cargo net
- Front mask
- Fog lights
- Rear roof spoiler
- Cassette player
- MP3/CD changer
- Rear bumper guard
- All-weather floor mats
- Cargo cover
- Cargo mat

For further information please refer to the Mazda5 Accessories Brochure. Mazda notes that all Genuine Mazda Accessories, if installed by your Mazda Dealer prior to or at an initial vehicle retail delivery, carry the same new-vehicle warranty as the Mazda5.

EXTERIOR COLOURS



PLATINUM SILVER METALLIC



SNOWFLAKE WHITE PEARL



INDIGO BLUE MICA



CARBON GREY MICA



CARDINAL RED MICA



STELLAR SILVER METALLIC



PHANTOM BLUE MICA



BRILLIANT BLACK

INTERIOR COLOUR



BLACK CLOTH

COLOUR COMBINATIONS

EXTERIOR	INTERIOR
	GS & GT
Platinum Silver Metallic	Black
Snowflake White Pearl	Black
Indigo Blue Mica	Black
Carbon Grey Mica	Black
Cardinal Red Mica	Black
Stellar Silver Metallic	Black
Phantom Blue Mica	Black
Brilliant Black	Black

MAZDA5 WHEELS



16" alloy wheels



17" alloy wheels

MAZDA WARRANTY The basic warranty on the Mazda5 covers all parts found to be factory defective for 3 years or 80,000 km whichever comes first. Additional warranties cover powertrain components for a period of 5 years or 100,000 km whichever comes first, body sheet metal perforation for 5 years and unlimited mileage and specific emission control components for up to 8 years or 128,000 km. Exclusions from coverage are limited to maintenance items or adjustments (repairs not requiring parts replacement) on vehicles over 12 months old and repairs due to normal wear and tear. Ask your Mazda Dealer for additional information.

ROADSIDE ASSISTANCE PROGRAM total satisfaction, 2006 Mazda5 owners are automatically enrolled in our Roadside Assistance Program. Roadside Assistance protects your Mazda5 for the duration of the 3-year basic limited warranty. Should you require assistance during this period, our service will help to get your vehicle back on the road and minimize any inconvenience. For complete details on this program, see your Mazda Dealer.

MAZDA MOBILITY ASSISTANCE PROGRAM Mazda Canada believes that vehicle access is vital for everyone. Under this program, physically-challenged customers who purchase or lease a new, unused Mazda vehicle may be eligible to receive assistance from Mazda Canada Inc. to aid with the cost of acquiring and installing adaptive driving aids on their vehicle. For complete details on this program, see your Mazda Dealer.

MAZDA TEST-DRIVE EXPERIENCE Exhilaration begins with the Mazda Test-Drive Experience – a uniquely designed road trip engineered to take you miles beyond the ordinary test-drive. Down local streets, on-ramps, highways, and off-ramps. Through straightaways, S-curves and corners. It's all about putting a Mazda to the test under real-world conditions. It's about discovering the superb acceleration, braking, steering, handling and ride quality that every Mazda offers. And rediscovering that fun, connected-to-the-road feeling we call "zoom-zoom!"

READY TO ROLL Our pre-delivery commitment means every new Mazda is checked out, gassed up, and fitted with floor mats.



For peace of mind motoring, we've created the Mazda Added Protection Plan (M.A.P.). M.A.P. complements your Mazda Limited Warranty for up to 7 years or 160,000 km, and protects you from unexpected repair expenses and the rising cost of repairs. All M.A.P. plans include Personal Budget and Repair Inflation Protection. In addition, all M.A.P. plans include Premium Roadside Assistance, which extends the roadside assistance coverage offered during the new vehicle limited warranty period throughout the M.A.P. term. The Premium Roadside Assistance offers Towing, Winching, Battery Boost, Out-of-Fuel Coverage, Tire Service, Lockout Service, Emergency Travel Expense Reimbursement and Travel Planning, and Dealer Locator. Should you ever decide to sell your Mazda vehicle, M.A.P. is transferable to future owners and will enhance the resale value of your vehicle. The Mazda Added Protection Plan is fully backed and administered by Mazda Canada Inc. For more information, please contact your Mazda Dealer.



Ask your dealer about Mazda's competitive program for recent university and college graduates.

Product changes and options availability: Following publication of this brochure, certain changes in standard equipment, options, prices and the like, or product delays may have occurred which would not be included in these pages. Your Mazda Dealer is your best source for up-to-date information. Mazda reserves the right to change product specifications at any time without incurring obligations. Options and accessories shown or described in this brochure are available at extra cost and may be offered only in combination with other options or subject to additional ordering requirements or limitations. E. & O. E.

ENGINE

Type	2.3L DOHC 16-valve I4	Compression ratio	9.7:1
Displacement	2,260 cc	Fuel system	Electronic Fuel Injection (EFI)
Horsepower SAE net	157 @ 6,500 rpm	Recommended fuel	Regular (unleaded)
Torque, SAE net lb. ft.	148 @ 3,500 rpm		

DRIVETRAIN

Type	Transverse front engine/front-wheel drive
Transmission	5-speed manual; Optional: 4-speed Sport mode AT with overdrive

CHASSIS

Frame	Unit body (Monocoque) with side door impact protection beams and Triple "H" construction
Front suspension	Independent, strut type, coil springs and stabilizer bar
Rear suspension	Independent, multi-link type, coil springs and stabilizer bar
Steering	Rack-and-pinion with Electro Hydraulic Power-Assist Steering
Minimum turning circle	10.6 m (curb-to-curb)
Brakes	Power-assisted front (ventilated) and rear (solid) disc brakes
	Anti-lock Brake System (ABS) with Electronic Brake Force Distribution (EBFD)

Curb weight (kg)	1,512 (MT)/1,538 (AT)
------------------	-----------------------

CAPACITIES

Seating	6 persons	Fuel tank	60L
Washer fluid tank	4L		

EXTERNAL DIMENSIONS (mm)

Wheelbase	2,750	Overall width	1,755
Track (fr/rr)	1,530/1,515	Overall height	1,630
Overall length	4,610	Ground clearance	140

INTERNAL DIMENSIONS

Headroom (fr/rr/3 rd) (mm)	1,033/1,000/942 (without moonroof)		
	988/995/942 (with moonroof)		
Legroom (fr/rr/3 rd) (mm)	1,035/893/780	Passenger volume (L)	2,768
Shoulder room (fr/rr/3 rd) (mm)	1,410/1,411/1,250	Total volume (L)	4,024
Height of luggage area (mm)	917		
Tailgate opening (mm)	865		

FUEL ECONOMY RATINGS (L/100km)

	5MT	4AT Sport
City	10.6	11.2
Highway	8.0	8.3

2006 MAZDA5 FEATURES

WHEELS AND TIRES

	GS	GT
16" alloy wheels	S	–
17" alloy wheels	–	S
205/55R16 all-season tires	S	–
205/50R17 all-season tires	–	S
Temporary spare tire	S	S

EXTERIOR FEATURES

Body-coloured outer door handle	S	S
Body-coloured protective bodyside mouldings	S	S
Body-coloured front grille	S	S
Body-coloured rear spoiler	–	S
Body-coloured power operated, heated door mirrors	–	S
Black-coloured power operated door mirrors	S	–
Sporty bumpers	S	S
Side sill extensions	S	S
White side turn markers	S	S
Rain-sensing intermittent windshield wipers	S	S
Rear window defroster and wiper	S	S
Sporty exhaust garnish	S	S
Auto light control	S	S
Sporty fog lights	–	S
Sliding doors	S	S

COMFORT AND CONVENIENCE

AM/FM/CD player with 4 speakers	S	–
AM/FM/CD player with 4 speakers and 2 tweeters	–	S
Air conditioning with automatic climate control	0	0
Steering wheel-mounted audio controls	S	S
Steering wheel-mounted cruise controls	–	S
Tilt and telescopic steering wheel	S	S
Internal fuel door release	S	S
Power door locks	S	S
Central locking switch on driver and front passenger doors	S	S
Remote keyless entry system with retractable key, welcome mode and panic alarm (includes two transmitters)	S	S
Illuminated entry	S	S
Micron air filter	S	S
Power windows with driver's one-touch down feature	S	S
Rear heater ducts	S	S
Cargo area lamp	S	S
Covered driver and passenger vanity mirrors	S	S
Passenger assist grips (3)	S	S
Coat hooks (2)	S	S
Map lamps	S	S
Easy close sliding door system	–	S
Power glass moonroof	–	S

COMFORT AND CONVENIENCE (cont'd)

	GS	GT
Dual front cup holders	S	S
Dual second row cup holders in centre console	S	S
Dual third row cup holders	S	S
Sport type cloth upholstery	S	S
Front row seats: Reclining/sliding front seats with thigh support	S	S
	Adjustable driver's seat lifter and lumbar support	S
	Armrest – driver	S
Second row seats: Two captain's chairs with reclining and forward/backward sliding functions	S	S
	Armrests	S
Third row seats: Two-passenger seating with 50/50 split fold-down seatbacks	S	S
Adjustable headrests	S	S
Leather-wrapped 3-spoke steering wheel	–	S
Leather-wrapped shift knob	–	S
Silver finish on inner door handle	S	S
Silver finish on centre panel	S	S

INSTRUMENT PANEL AND STORAGE

Ignition key illumination	S	S
Two 12 volt power outlets	S	S
Tachometer	S	S
Engine coolant temperature gauge	S	S
Warning lights for oil pressure, check engine, low washer fluid, low fuel level and door ajar	S	S
Warning light for air bags	S	S
Front door storage pockets with bottle holders	S	S
Double centre console box with lid	S	S
Centre row, fold-out table/cargo bin	–	S
Illuminated lockable glove compartment	S	S
Driver side seatback pocket	S	S

SAFETY AND SECURITY

Dual front air bags	S	S
Dual front side air bags	–	S
Dual side air curtains (with coverage for all occupants)	–	S
Brake assist	S	S
Side door impact protection beams	S	S
Child-proof rear door locks	S	S
Engine immobilizer theft-deterrent system	S	S
Whiplash-reducing adjustable front seat headrests	S	S
Adjustable front safety belt anchors	S	S
Integrated child seat anchors	S	S
3-point safety belts for all occupants	S	S
Driver and front passenger safety belt pretensioners and load limiters	S	S
Anti-theft alarm system	–	S

S = Standard 0 = Optional – = Not available