

2006 **mazda6**

DRIVE

IT'S ALL ABOUT THE



REMEMBER WHEN YOU
COULDN'T WAIT
TO GET A **DRIVER'S LICENSE?**



MAZDA6 SEDAN

In human terms, the Mazda6 sedan is a definite overachiever. Its exhilarating performance has garnered more than 100 awards and countless accolades from the automotive press. Automobile Magazine, for instance, called Mazda6 "...the prototype of how to make a thrilling sedan" (10/03) and the Automobile Journalists Association of Canada named Mazda6 the Best New Family Car in 2004. Then again, it's no mystery why. Just one look at the Mazda6's newly refreshed styling and taut, athletic profile sets the pulse quickening – as will either of its advanced, free-revving all-aluminum engines. And with a sophisticated, 4-wheel independent suspension, the Mazda6 delivers handling that speaks directly to your love of driving.

IT ISN'T CALLED "SPORT WAGON"
FOR NOTHING.



MAZDA6 SPORT WAGON

Traditionally, there's been a distinct disconnect between the words "Wagon" and "Performance". No more. Meet the Mazda6 Sport Wagon; a thoroughly refreshing approach to performance with practicality. Satisfying the first half of that equation is a 215-hp V6 mated to a 5-speed close-ratio stick, or an available 6-speed **Sport** mode AT, plus a fully independent, sport-tuned suspension. Completing it, is 959-litres of flexible cargo space. All in all, it's an ideal blend of fun and function. It's what happens when a practical wagon dares to think outside the box.

AN OPEN-AND-SHUT CASE

FOR **INSPIRED DESIGN.**



MAZDA6 SPORT HATCHBACK

Beneath its sleek and sporty profile, the Mazda6 Sport hatchback offers an ingenious blend of versatility and performance – as well as convincing proof of the value of innovative engineering. In back, 626-litres of versatile cargo space await your luggage, sports gear, a week's groceries, or even that new home theatre system. While up front, an advanced multi-valve engine and quick-shifting 5-speed manual transmission deliver exhilarating sports-sedan performance that never lets you forget you're in a Mazda.



EXTERIOR COLOURS



DARK CHERRY MICA



SEA BLUE METALLIC



SONIC BLUE METALLIC



BRIGHT RED



GLACIER WHITE



REDFIRE METALLIC



BLACK ONYX



GLACIER SILVER METALLIC



BRIGHT ISLAND BLUE METALLIC



TUNGSTEN GREY METALLIC



GOLD ASH METALLIC

INTERIOR COLOURS



BLACK CLOTH



BLACK LEATHER



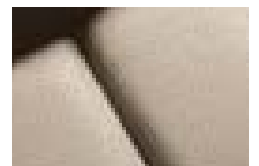
GREY CLOTH



GREY LEATHER



BEIGE CLOTH



BEIGE LEATHER

MAZDA6 SEDAN COLOUR & TRIM

EXTERIOR	INTERIOR	
	GS (CLOTH)	GT (LEATHER)
Glacier White	Grey	Grey
Black Onyx	Grey	Black
Sonic Blue Metallic	Beige	Beige
Redfire Metallic	Black	Black
Glacier Silver Metallic	Black	Black
Gold Ash Metallic	Beige	Beige
Tungsten Grey Metallic	Black	Black
Dark Cherry Mica	Grey	Beige

MAZDA6 SPORT HATCHBACK COLOUR & TRIM

EXTERIOR	INTERIOR	
	GS (CLOTH)	GT (LEATHER)
Black Onyx	Black	Black
Glacier Silver Metallic	Black	Black
Bright Red	Black	Black
Tungsten Grey Metallic	Black	Black
Dark Cherry Mica	Grey	Beige
Bright Island Blue Metallic	Beige	Beige

MAZDA6 SPORT WAGON COLOUR & TRIM

EXTERIOR	INTERIOR	
	GS (CLOTH)	GT (LEATHER)
Black Onyx	Grey	Beige
Glacier Silver Metallic	Black	Black
Sea Blue Metallic	Grey	Beige
Gold Ash Metallic	Beige	Beige
Tungsten Grey Metallic	Black	Black
Dark Cherry Mica	Beige	Beige

MAZDA6 WHEELS



16" steel wheels



17" alloy wheels



18" alloy wheels



2006 MAZDA6 SEDAN / MAZDA6 SPORT HATCHBACK / MAZDA6 SPORT WAGON SPECIFICATIONS

MODELS: Mazda6 sedan: GS-I4, GT-I4, GS-V6, GT-V6 / Mazda6 Sport hatchback: GS-I4, GT-I4, GS-V6, GT-V6 / Mazda6 Sport Wagon: GS-V6, GT-V6

ENGINE	GS-I4, GT-I4	GS-V6, GT-V6
Type	2.3L DOHC 16-valve I4	3.0L DOHC 24-valve V6
Displacement	2,260 cc	2,967 cc
Compression ratio	9.7:1	10.0:1
Horsepower SAE net	160 @ 6,000 rpm	215 @ 6,000 rpm
Torque, SAE net lb. ft.	155 @ 4,000 rpm	199 @ 5,000 rpm
Fuel system	Multi-port Electronic Fuel-Injection (EFI)	Multi-port Electronic Fuel-Injection (EFI)
Recommended fuel	Regular (unleaded)	Regular (unleaded)

DRIVETRAIN

Type	Front engine/front-wheel drive
Transmission	5-speed manual 5-speed electronically controlled Sport mode AT with overdrive, optional on I4 (sedan, Sport hatchback) 6-speed electronically controlled Sport mode AT with overdrive, optional on V6

CHASSIS

Frame	Monocoque
Front suspension	Independent, high-mount double-wishbone, coil springs and stabilizer bar
Rear suspension	Independent, E-type multi-link, coil springs and stabilizer bar
Steering	Rack-and-pinion with engine-rpm-sensing variable power-assist
Minimum turning circle	11.8 m (curb-to-curb)
Brakes	Power-assisted with dual diagonal hydraulic circuits Anti-lock Brake System (ABS) (4-wheel, 4-sensor, 3-channel) with Electronic Brake Force Distribution (EBFD) standard on sedan GT, Sport hatchback and Sport Wagon (Optional on sedan GS) Ventilated front discs: 299 mm Solid rear discs: 280 mm 4-wheel disc brakes

Curb weight (kg)	SEDAN	SPORT HATCHBACK	SPORT WAGON
I4	1,387 (MT); 1,421 (AT)	1,446 (MT); 1,480 (AT)	—
V6	1,504 (MT); 1,530 (AT)	1,526 (MT); 1,552 (AT)	1,559 (MT); 1,586 (AT)

CAPACITIES

Seating	5 persons
Washer fluid tank	4.4L
Fuel tank	68L
EXTERNAL DIMENSIONS (mm)	
Wheelbase	2,675
Track (fr/rr)	1,540/1,540 (205 tires) 1,530/1,530 (215 tires)
Overall length	4,745 (sedan, Sport hatchback); 4,770 (Sport Wagon)
Overall width	1,780
Overall height	1,440 (sedan, Sport hatchback); 1,455 (Sport Wagon)
Ground Clearance	130 (laden)

INTERNAL DIMENSIONS

	SEDAN	SPORT HATCHBACK	SPORT WAGON
Headroom – without moonroof (fr/rr) (mm)	984/942	984/932	984/981
Headroom – with moonroof (fr/rr) (mm)	966/942	966/932	966/981
Legroom (fr/rr) (mm)	1,074/927	1,074/926	1,074/926
Shoulder room (fr/rr) (mm)	1,421/1,403	1,421/1,403	1,421/1,403
Cargo volume (L)	429	626	959
DIN Cargo volume (with rear seats folded down), from the top of the ceiling (L)	—	1,662	1,712
Passenger volume (L)	2,734	2,721	2,784
Total volume (L)	3,163	3,347	3,743

FUEL ECONOMY RATINGS (L/100 km)

	I4				V6			
	SMT		SAT Sport		SMT		6AT Sport	
	City	Highway	City	Highway	City	Highway	City	Highway
SEDAN	10.0	6.8	10.0	7.0	12.2	8.0	12.1	7.9
SPORT HATCHBACK	10.0	6.8	10.0	7.0	12.2	8.0	12.1	7.9
SPORT WAGON	—	—	—	—	12.2	8.0	12.1	7.9

MAZDA6 SEDAN



MAZDA6 SPORT WAGON



MAZDA6 SPORT HATCHBACK



MAZDA WARRANTY The basic warranty on the Mazda6 sedan, Mazda6 Sport hatchback and Mazda6 Sport Wagon covers all parts found to be factory defective for 3 years or 80,000 km whichever comes first. Additional warranties cover powertrain components for a period of 5 years or 100,000 km whichever comes first, body sheet metal perforation for 5 years and unlimited mileage and specific emission control components for up to 8 years or 128,000 km. Exclusions from coverage are limited to maintenance items or adjustments (repairs not requiring parts replacement) on vehicles over 12 months old and repairs due to normal wear and tear. Ask your Mazda Dealer for additional information.

ROADSIDE ASSISTANCE PROGRAM As part of our commitment to your total satisfaction, 2006 Mazda6 sedan, Mazda6 Sport hatchback and Mazda6 Sport Wagon owners are automatically enrolled in our Roadside Assistance Program. Roadside Assistance protects your Mazda6 sedan, Mazda6 Sport hatchback and Mazda6 Sport Wagon for the duration of the 3-year basic limited warranty. Should you require assistance during this period, our service will help to get your vehicle back on the road and minimize any inconvenience. For complete details on this program, see your Mazda Dealer.

MAZDA MOBILITY ASSISTANCE PROGRAM Mazda Canada believes that vehicle access is vital for everyone. Under this program, physically-challenged customers who purchase or lease a new, unused Mazda vehicle may be eligible to receive assistance from Mazda Canada Inc. to aid with the cost of acquiring and installing adaptive driving aids on their vehicle. For complete details on this program, see your Mazda Dealer.

MAZDA TEST-DRIVE EXPERIENCE Excitement begins with the Mazda Test-Drive Experience – a uniquely designed road trip engineered to take you miles beyond the ordinary test-drive. Down local streets, on-ramps, highways, and off-ramps. Through straightaways, S-curves and corners. It's all about putting a Mazda to the test under real-world conditions. It's about discovering the superb acceleration, braking, steering, handling and ride quality that every Mazda offers. And rediscovering that fun, connected-to-the-road feeling we call "zoom-zoom".

READY TO ROLL Our pre-delivery commitment means every new Mazda is checked out, gassed up, and fitted with floor mats.



For peace of mind motoring, we've created the Mazda Added Protection Plan (M.A.P.). M.A.P. complements your Mazda Limited Warranty for up to 7 years or 160,000 km, and protects you from unexpected repair expenses and the rising cost of repairs. All M.A.P. plans include Personal Budget and Repair Inflation Protection. In addition, all M.A.P. plans include Premium Roadside Assistance, which extends the roadside assistance coverage offered during the new vehicle limited warranty period throughout the M.A.P. term. The Premium Roadside Assistance offers Towing, Winching, Battery Boost, Out-of-Fuel Coverage, Tire Service, Lockout Service, Emergency Travel Expense Reimbursement and Travel Planning, and Dealer Locator. Should you ever decide to sell your Mazda vehicle, M.A.P. is transferable to future owners and will enhance the resale value of your vehicle. The Mazda Added Protection Plan is fully backed and administered by Mazda Canada Inc. For more information, please contact your Mazda Dealer.



Ask your dealer about Mazda's competitive program for recent university and college graduates.

Product changes and options availability: Following publication of this brochure, certain changes in standard equipment, options, prices and the like, or product delays may have occurred which would not be included in these pages. Your Mazda Dealer is your best source for up-to-date information. Mazda reserves the right to change product specifications at any time without incurring obligations. Options and accessories shown or described in this brochure are available at extra cost and may be offered only in combination with other options or subject to additional ordering requirements or limitations. E. & O. E.



	SEDAN				SPORT HATCHBACK				SPORT WAGON	
	GS-I4	GT-I4	GS-V6	GT-V6	GS-I4	GT-I4	GS-V6	GT-V6	GS-V6	GT-V6
ENGINEERING FEATURES										
5-speed manual transmission	S	S	S	S	S	S	S	S	S	S
5-speed electronically-controlled Sport mode AT with overdrive	0	0	—	—	0	0	—	—	—	—
6-speed electronically-controlled Sport mode AT with overdrive	—	—	0	0	—	—	0	0	0	0
Anti-lock Brake System (ABS) with Electronic Brake Force Distribution (EBFD)	0	S	0	S	S	S	S	S	S	S
Traction Control System (TCS)	0	S	0	S	S	S	S	S	S	S
WHEELS AND TIRES										
16" steel wheels	S	—	S	—	—	—	—	—	S	—
17" alloy wheels	SP	S	SP	S	S	S	S	—	SP	S
18" alloy wheels	—	—	—	—	—	—	—	S	—	PP
205/60R16 all-season tires	S	—	S	—	—	—	—	—	S	—
215/50R17 all-season tires	SP	S	SP	S	S	S	S	—	SP	S
215/45R18 all-season tires	—	—	—	—	—	—	—	S	—	PP
EXTERIOR FEATURES										
Front mud guards	S	S	S	—	S*	—	—	—	S*	—
Body-coloured protective bodyside mouldings	S	S	S	S	S	S	S	S	S	S
Body-coloured bumpers and door handles	S	S	S	S	S	S	S	S	S	S
Body-coloured rocker panel	S	S	S	S	S	S	S	S	S	S
Body-coloured front grille	—	—	—	S	GFX	S	S	S	GFX	S
Body-coloured side sill extensions	—	—	—	S	GFX	S	S	S	GFX	S
Body-coloured rear spoiler	—	—	—	S	GFX	S	S	S	GFX	S
Body-coloured power operated, heated door mirrors	S	S	S	S	S	S	S	S	S	S
Headlights — Xenon (HID)	—	—	—	—	S	—	S	—	S	PP
Variable intermittent wipers	S	S	S	S	S	S	S	S	S	S
Intermittent rear wiper	—	—	—	—	S	S	S	S	S	S
Black headlight housings	—	—	—	S	GFX	S	S	S	GFX	S
Automatic headlight shut off	S	S	S	S	S	S	S	S	S	S
Fog lights	SP	S	SP	S	SP	S	S	S	SP	S
Sporty taillights	—	—	—	S	GFX	S	S	S	GFX	S
Sporty roof mounted antenna	S	S	S	S	S	S	S	S	S	S
Dual exhaust mufflers with bright oval finishers	S	S	S	S	S	S	S	S	S	S
COMFORT AND CONVENIENCE										
AM/FM/CD player with 4 speakers and 2 tweeters	S	—	S	—	S	—	S	—	S	—
AM/FM 6-disc in-dash CD changer, Bose® audio system with 4 speakers, 2 tweeters and subwoofer	—	S	—	S	—	S	—	S	—	S
Air conditioning with micron air filter	S	S	S	S	S	S	S	S	S	S
Manual climate controls	S	—	S	—	S	—	S	—	S	—
Automatic climate controls	—	S	—	S	—	S	—	S	—	S
Rear seat heater ducts	S	S	S	S	S	S	S	S	S	S
Power glass moonroof with sunshade	—	S	0	S	—	S	0	S	0	S
Voice activated navigation system with retractable 7" display	—	—	—	—	—	—	—	0	—	0
Driver-side key cylinder open/close function for front windows	S	S	S	S	S	S	S	S	S	S
Power windows with driver/front passenger's one-touch up and down feature	S	S	S	S	S	S	S	S	S	S
Power door locks with 2-stage unlocking	S	S	S	S	S	S	S	S	S	S
Keyless entry system with retractable key (2 transmitters)	S	S	S	S	S	S	S	S	S	S
Remote keyless down function for front windows	S	S	S	S	S	S	S	S	S	S
Internal fuel door release	S	S	S	S	S	S	S	S	S	S
Steering wheel-mounted audio controls	SP	S	SP	S	SP	S	S	S	SP	S
Steering wheel-mounted cruise controls	S	S	S	S	S	S	S	S	S	S
Tilt and telescopic steering wheel	S	S	S	S	S	S	S	S	S	S
Auto-dimming mirror with HomeLink®	—	S	—	S	—	S	—	S	—	S
Dual front map lamps with sunglass holder	S	S	S	S	S	S	S	S	S	S
Rear overhead dual map lamps	S	S	S	S	S	S	S	S	S	S
Delayed courtesy lights (front and rear map lights, front door lights)	S	S	S	S	S	S	S	S	S	S
Cargo area lamp	S	S	S	S	S	S	S	S	S	S
Illuminated covered driver and passenger vanity mirrors	S	S	S	S	S	S	S	S	S	S
Dual front and rear cup holders	S	S	S	S	S	S	S	S	S	S
Passenger assist grips (3)	S	S	S	S	S	S	S	S	S	S
Coat hooks (2)	S	S	S	S	S	S	S	S	S	S
SEAT AND TRIM										
Reclining front bucket seats with slide adjustment	S	—	S	—	S	—	—	—	S	—
Driver's manual seat lifter	S	—	S	—	S	—	—	—	S	—

	SEDAN				SPORT HATCHBACK				SPORT WAGON	
	GS-I4	GT-I4	GS-V6	GT-V6	GS-I4	GT-I4	GS-V6	GT-V6	GS-V6	GT-V6
SEAT AND TRIM (cont'd)										
8-way power adjustable driver's seat with manual lumbar support adjustment	SP	S	SP	S	SP	S	S	S	SP	S
Heated front seats	—	S	—	S	—	S	—	S	—	S
60/40 split fold-down rear seatback with centre armrest	S	S	S	S	S	S	S	S	S	S
Trunk-mounted rear seatback release levers	S	S	S	S	S	S	S	S	S	S
Cloth upholstery	S	—	S	—	S	—	S	—	S	—
Leather upholstery	—	S	—	S	—	S	—	S	—	S
Leather-wrapped 3-spoke steering wheel	SP	S	SP	S	SP	S	S	S	SP	S
Leather-wrapped shift knob (MT and AT)	SP	S	SP	S	SP	S	S	S	SP	S
Leather-wrapped parking brake handle	SP	S	SP	S	SP	S	S	S	SP	S
INSTRUMENT PANEL AND STORAGE										
Two 12 volt power outlets	S	S	S	S	S	S	S	S	S	S
Black gauges with white lettering and red night time illumination	S	S	S	—	S	—	—	—	S	—
Electroluminescent gauges with red night time illumination	—	—	—	S	GFX	S	S	S	GFX	S
Tachometer, engine coolant temperature gauge and fuel gauge	S	S	S	S	S	S	S	S	S	S
Twin trip odometers	S	S	S	S	S	S	S	S	S	S
Warning lights for low windshield washer fluid level, low fuel level, door ajar, check engine, oil pressure, volts, parking brake, high beam and safety belts	S	S	S	S	S	S	S	S	S	S
Front door storage pockets with bottle holders	S	S	S	S	S	S	S	S	S	S
Driver side seatback pocket	S	S	S	S	S	S	S	S	S	S
Coin holder with mat and lid — driver side	S	S	S	S	S	S	S	S	S	S
Centre dash panel storage compartment with mat and lid (not available with NAV system)	S	S	S	S	S	S	S	S	S	S
Centre console armrest with covered dual storage compartments	S	S	S	S	S	S	S	S	S	S
Illuminated lockable glove compartment	S	S	S	S	S	S	S	S	S	S
Storage fasteners	—	—	—	—	4	4	4	4	8	8
Side trim pockets in cargo area (left and right)	—	—	—	—	S	S	S	S	S	S
Storage tray in cargo area (not available with Premium audio)	—	—	—	—	—	—	—	—	S	—
Movable barrier cargo net	—	—	—	—	—	—	—	—	S	S
Retractable cargo cover	—	—	—	—	—	—	—	—	S	S
SAFETY AND SECURITY										
Triple "H" construction	S	S	S	S	S	S	S	S	S	S
Side door impact protection beams	S	S	S	S	S	S	S	S	S	S
Optimized brake and accelerator pedal layout (crushable box design)	S	S	S	S	S	S	S	S	S	S
Dual front air bags	S	S	S	S	S	S	S	S	S	S
Dual front side air bags	—	S	—	S	—	S	S	S	—	S
Dual side air curtains	—	S	—	S	—	S	S	S	—	S
Whiplash-reducing adjustable front seat headrests	S	S	S	S	S	S	S	S	S	S
Adjustable rear seat headrests	—	—	—	—	S	S	S	S	S	S
Front safety belt pretensioners with force limiters	S	S	S	S	S	S	S	S	S	S
3-point safety belts for all occupants	S	S	S	S	S	S	S	S	S	S
Height adjustable front shoulder belt "B" pillar anchors	S	S	S	S	S	S	S	S	S	S
Child-proof rear door locks	S	S	S	S	S	S	S	S	S	S
ISOFIX child safety-seat anchors in rear seat (upper and lower type)	S	S	S	S	S	S	S	S	S	S
Engine immobilizer theft-deterrent system	S	S	S	S	S	S	S	S	S	S
Anti-theft alarm system	—	S	—	S	—	S	—	S	—	S

S = Standard 0 = Optional SP = Sport package GFX = GFX package PP = Performance package — = Not Available

*Except if equipped with GFX package

Sport package: (Mazda6 sedan GS and Mazda6 Sport Wagon GS) 17" alloy wheels, 215/50R17 all-season tires, 8-way power adjustable driver's seat, fog lights, leather-wrapped shift knob, parking brake handle and steering wheel-mounted audio controls.

Sport package: (Mazda6 Sport hatchback GS-I4 and Mazda6 Sport Wagon GS) Side sill extensions, body-coloured rear spoiler and front grille, electroluminescent gauges, dark grey console trim, black housings on the headlights and sporty taillights.

GFX package: (Mazda6 Sport hatchback GS-I4 and Mazda6 Sport Wagon GS) Side sill extensions, body-coloured rear spoiler and front grille, electroluminescent gauges, dark grey console trim, black housings on the headlights and sporty taillights.

Performance package: (Mazda6 Sport Wagon GT) 18" alloy wheels, 215/45R18 tires and Xenon headlights.

© Bose is a registered trademark of Bose Corporation. © HomeLink and the HomeLink house are registered trademarks of Johnson Controls, Inc.



MAZDA6 SPORT WAGON



MAZDA6 SPORT HATCHBACK



MAZDA5



MX-5



MAZDA6

ALWAYS THE **SOUL** OF A SPORTS CAR.



MAZDA3 SPORT



MAZDA3



TRIBUTE



RX-8



MPV



B-SERIES



Get more detailed information on your Mazda6. Check out our website at www.mazda.ca for specifications and features, option packages, pricing, financing, to book a test-drive and find a dealer near you. Mazda Canada Inc., 55 Vogell Road, Richmond Hill, Ontario L4B 3K5

Printed in Canada

