



SOLUTIONS FOR THE WORLD YOU DRIVE IN.

At General Motors we are 100 percent committed to building vehicles that answer your specific needs. Because you demand more of your vehicle than ever before, we're committed to putting more of what you want into every vehicle we make.

VALUE

Value means much more than simply the price you pay for a vehicle. We are particularly proud of the value you receive for your money when you choose a General Motors vehicle – the unique combination of style, performance, safety, quality and functionality that sets GM's diverse model lineup apart from the rest.

QUALITY

If you're looking for a vehicle that's built to exceptionally high standards, look no further than GM's long list of quality and dependability awards, media accolades and consumer recommendations – as well as the fact that GM builds the most dependable, longest-lasting full-size pickups on the road.*

SAFETY

General Motors is the only automotive manufacturer committed to offering a full range of cars, trucks and SUVs that provide safety protection before, during and after a collision. In addition, GM builds 26 vehicles that have earned U.S. Government five-star frontal or side crash test ratings for 2006 models.**

FUEL ECONOMY

We know how important fuel efficiency is today. GM has it covered by offering more cars that get better than 7.0 L/100 km or 40 mpg in highway† driving than any other automaker in Canada. In addition, GM offers 15 models with Active Fuel Management™ fuel-saving technology – and 17 models that can run on E85 ethanol fuel.

INNOVATIVE DESIGNS

It required ingenuity to bring utility and dramatic style together in the Chevrolet HHR. And it required pure creativity to execute the flawless lines and purposeful design of the Pontiac Solstice open-air roadster. At GM, we break the mould to develop new designs that give you more range of selection than ever before.

FEATURES

GM keeps you ahead of the curve, by adding the features that really make a difference to your driving experience. Features like OnStar – the first comprehensive in-vehicle communications and assistance service. And XM Satellite Radio – the largest satellite radio provider in the world – that's now offered on more than 50 GM vehicles.

*Dependability based on longevity; 1988-July 2005 full-size Chevrolet and GMC light-duty pickup registrations, including chassis cabs. Sources: R.L. Polk Canada, Inc. National Vehicle Population Profile – Canadian Vehicles in Operation as of July 1, 2005. Based on % of vehicles remaining in operation, weighted on age of vehicle.
**U.S. Government ratings are part of the National Highway Traffic Safety Administration's (NHTSA's) New Car Assessment Program (safercar.gov).
†Based on Natural Resources Canada's 2006 Fuel Consumption Guide's rating available at time of printing.
™© 2005, VANOC. Used under License.

CHEVROLET PONTIAC BUICK GMC SATURN HUMMER SAAB CADILLAC

gmcanada.com



2007 MALIBU & MALIBU MAXX



2007
MALIBU &
MALIBU MAXX



2007 MALIBU

QUALITY AND REFINEMENT ADD UP TO A WORLD OF DIFFERENCE.

There is certainly no shortage of mid-size sedans in production. But their sheer numbers may tend to disguise the fact that all mid-size sedans are definitely not created equal. If you restrict your search to sedans that offer award-winning quality, built on an esteemed global vehicle architecture, the ranks narrow considerably. Sharpen your focus further by including only those with taut road manners, and performance that is highlighted by the 240 horsepower Super Sport models. Then consider only those with an innovative approach to versatility and five-star safety ratings* – the highest government safety rating awarded. So what's left of that crowd of mid-size sedans? Two exceptionally refined automobiles: the world-class Malibu Sedan and five-door Malibu Maxx.

For more information on Malibu and Malibu Maxx, visit our website at malibu.gmcanada.com

*2006 4-door and 5-door models tested. Driver and front passenger frontal crash ratings. U.S. government ratings are part of the National Highway Traffic Safety Administration's (NHTSA) New Car Assessment Program (safercar.gov).



AT LEFT: Malibu Maxx SS, shown in Laser Blue Metallic.
AT RIGHT: Malibu SS Sedan, shown in Laser Blue Metallic.

MALIBU SEDAN

YOU CAN DEPEND ON IT.

When a car has won prestigious awards for both quality and dependability, a rigorous approach to engineering and manufacturing that encompasses every detail is revealed. Malibu's awards also tell you of a relentless quest for improvement. Every year Chevrolet's engineers find new ways of making Malibu an even more rewarding car to drive and to own. An example can be found in the 3.5L V6 engine that's standard on Malibu LTZ Sedan. For 2007, the engine has gained 16 horsepower, increasing the already impressive output to 217 hp. Once Malibu establishes a standard for quality, the challenge remains to surpass it. This new standard is best experienced through a test drive.



MALIBU INTERIOR



The Malibu factory-installed remote vehicle starter system enables you to start the engine from a distance of up to 60 m (200 ft.) simply by depressing a button on your key fob – so you can start warming or cooling the interior even before you get to the car. Standard on LT, LTZ and SS models.

Power adjustable brake and accelerator pedals easily adapt to drivers of different heights, adding to Malibu's safety and convenience. Standard on LTZ and SS models, available on LT.



Malibu LTZ interior, shown in Light Titanium with UltraLux and leather-accented, heated front seats and other available features.

MAKE IT PERSONAL.

Comfort is very personal. To establish your preferred driving position, Malibu is equipped with a power driver's seat height adjuster, as well as a tilt and telescoping steering column. Further customizing of your comfort is made possible by the available power six-way driver's seat and power adjustable pedals.

The standard Driver Information Centre also offers a host of personalization features. Even the standard power door locks can be programmed according to your preferences. With Malibu, we make it personal, and that's a very good thing.

KEY FEATURES:

- OnStar with one-year of the Safe & Sound Plan on LTZ, available on LT and SS
- Power windows, mirrors and programmable door locks
- Air conditioning; automatic climate control on LTZ and SS
- Cruise control
- Driver Information Centre
- Power driver's seat height adjuster
- 60/40 split-folding rear seat increases interior flexibility
- CD player standard; premium 6-speaker sound system standard on LT, LTZ and SS models
- In-dash 6-disc CD player available.


MALIBU MAXX

THE EXCEPTION THAT PROVES THE RULE.

It used to be if you wanted versatility in a vehicle, you needed to drive an SUV or a minivan. Then five-door Malibu Maxx introduced a new category, featuring all the qualities of a well-built sedan, including a standard 217 horsepower V6 engine, plus four-wheel disc brakes with anti-lock braking and an enhanced traction system. Malibu Maxx takes all those attributes and adds tremendous cargo-carrying capacity and flexibility. The versatile vehicle that delivers an exceptionally refined ride and outstanding fuel efficiency: Malibu Maxx.




MALIBU MAXX INTERIOR



Fixed rear skylights with dual retractable sunshades are standard on Malibu Maxx. A power sliding glass front sunroof is available.

The available rear DVD entertainment system features DVD/CD player, an LCD monitor, 2 wireless headphones, input jacks and a remote control unit.



The reversible 2-position rear cargo panel acts as a security cover or as a tabletop.

NOT JUST FLEXIBLE – MULTI-FLEXIBLE.

Malibu Maxx takes flexibility to a whole new level, thanks to the innovative Multi-Flex 60/40 split-folding reclining rear seats. They slide forwards or backwards up to 178 mm (7 in.) to offer more rear-seat legroom than either Toyota Camry or Honda Accord, as well as best-in-class cargo volume.* The versatility is further

enhanced by a reversible, two-position, rear cargo panel. And standard rear skylights add an expansive feeling of openness to the interior, further helping to define the unique Malibu Maxx experience.

*Based on GM Mid Sedan segmentation and latest published competitive information available at time of printing. Cargo and load capacity limited by weight and distribution.

KEY FEATURES:

- 217 hp 3.5L V6
- Front and rear disc brakes with 4-wheel anti-lock braking system
- Multi-Flex 60/40 split reclining rear seats
- Flat-folding front passenger seat
- Premium 6-speaker sound system and CD player

Malibu Maxx LTZ interior, shown in Light Neutral with UltraLux and leather-accented, heated front seats and other available features.

- In-dash 6-disc CD player available
- Rear DVD entertainment system available
- Factory-installed remote vehicle starter system
- OnStar with one-year of the Safe & Sound Plan on LTZ, available on LT and SS.

MALIBU SS

THE SUPER SPORT SEDANS.

What happens when you turn up the heat on Malibu Sedan and Malibu Maxx? You get the blistering brand of performance reserved for the Malibu and Malibu Maxx SS models. The look is bold, thanks to sporty features such as 18-inch flangeless aluminum wheels and a dual chrome-tipped exhaust. Power is generated by an advanced 240 horsepower 3.9L V6 with variable valve timing. SS's four-speed automatic transmission with driver manual shift control and sport performance suspension system add to the credentials. The pace-setting Malibus – Malibu SS and Malibu Maxx SS.



The Malibu SS-specific instrument panel and gauges reveals SS's performance orientation.



FAR LEFT: The 3.9L V6 engine features variable valve timing, which enhances combustion efficiency and torque output across the engine's rpm range. The engine generates 240 hp and 241 lb.-ft. of torque.

LEFT: The confident stance of the Malibu SS is enhanced by 18-in. x 7-in. flangeless Sport aluminum wheels.



FOREGROUND: Malibu SS Sedan, shown in Laser Blue Metallic.
BACKGROUND: Malibu Maxx SS, shown in Laser Blue Metallic.

MALIBU TECHNOLOGY & SAFETY

THIS IS WHERE OUR ENGINEERS GET TO BRAG.

Our engineers apply an exhaustive quality standard to every aspect of Malibu. That includes a comprehensive safety package featuring standard front and rear inflatable side curtain air bags.* No wonder Malibu earned a 2006 Silver Top Safety Pick by the Insurance Institute for Highway Safety.** When you drive a Malibu, you earn a few bragging rights of your own.

*A NOTE ON CHILD SAFETY: Always use safety belts and proper child restraints, even in vehicles equipped with air bags. Even with the Passenger Sensing System, children are safer when properly secured in a rear seat. Never place a rear-facing infant restraint in the front seat of any vehicle equipped with an active air bag. Refer to the vehicle Owner's Manual and child safety seat instructions for more information.

**2006 models tested with available seat-mounted side-impact air bags.



EXTENDED-LIFE SPARK PLUGS. All Malibu engines use extended-life spark plugs, designed to last 166,000 km before replacement.*

FOUR-SPEED AUTOMATIC TRANSMISSION. Built in Windsor, Ontario, the Malibu transmission delivers smooth, electronically controlled gear changes. The Dexron III automatic transmission fluid is designed to last for the life of the car.*

ALUMINUM SUSPENSION COMPONENTS. Both the front and rear suspension systems make extensive use of aluminum components to reduce weight. These lighter parts help to minimize the impact of road irregularities on the body structure, which makes for a more comfortable, controlled ride.

ELECTRIC POWER STEERING. Variable-effort electric power steering eliminates the hydraulics of a conventional power steering system, reducing weight and fuel consumption. This environmentally friendly system also eliminates steering stiffness following start-ups in extremely cold conditions. Standard on all but SS models.

2.2L ECOTEC I-4. Standard on Malibu LS and LT Sedan, the 2.2L ECOTEC in-line 4-cylinder engine incorporates double overhead camshafts and 4-valves per cylinder to help produce 144 hp and 155 lb.-ft. of torque. Twin balance shafts help minimize vibration.

3.5L V6. For 2007, Malibu's 3.5L V6 has received a significant upgrade in power. The engine now produces 217 hp and 217 lb.-ft. of torque. This engine is well known for its smooth, quiet operation and excellent durability. The 3.5L V6 is standard on LTZ Sedan, as well as Maxx LT and LTZ.

3.9L V6 VVT. The 3.9L V6 VVT features a dual-path variable-intake manifold that acts as a low-speed torque enhancer, helping deliver a broad torque curve across the rpm range. Output is 240 hp and 241 lb.-ft. of torque. Standard on SS.

BRAKING SYSTEM. Malibu's braking system features European-style brake pads that deliver excellent braking feel, stopping power and fade performance. The system also includes world-class brake calipers.

REMOTE STARTER SYSTEM. Malibu was the first vehicle ever to offer an available factory-installed remote vehicle starter system. You can start the engine from a distance of up to 60 m (200 ft.) simply by depressing a button on your key fob, which also enables you to activate the heating and cooling systems. The remote starter is also fully integrated with the security system, and unlike aftermarket systems, it is backed by GM's 3 year/60,000 km (whichever comes first) New Vehicle Limited Warranty.

FOUR-LINK REAR SUSPENSION. A compact MacPherson front strut design is combined with a 4-link rear suspension to deliver the agility normally associated with European cars.

WELL-POSITIONED CATALYTIC CONVERTERS. Mounted close to the engine's exhaust manifold, Malibu's catalytic converters get up to operating temperature quickly after start-up, for significantly reduced emissions. As a result, Malibu doesn't require an air pump, a secondary catalytic converter or an EGR valve to meet applicable emissions standards.

HYDROFORMED ENGINE CRADLE. A fully isolated hydroformed engine cradle not only helps reduce noise and vibration, it also allows for more precise suspension system tuning.

MAGBEAM. Squeaks and rattles are significantly reduced by the presence of a cast-magnesium beam instrument panel support.

SOUND DAMPING. Superior sound insulation is provided by tight-fitting front and rear carpeting, in addition to the sound damping materials used in the hood, instrument panel and cargo area.

*Maintenance needs vary with use and driving conditions. Please refer to the Owner's Manual for more information.



GM Accessories available for Malibu include:

- Rear spoiler
- Trunk liner
- Multi-purpose organizer
- Ventvisors
- Splash guards
- Moulded rubber floor mats.

MALIBU ACCESSORIES

MALIBU HAS ITS OWN PERSONALITY. NOW ADD YOURS.

Malibu and Malibu Maxx have strong characters all their own. Now it's your turn to personalize your vehicle with the added style and function provided by GM Accessories. They are the only accessories that are integrated into the process of designing your vehicle, ensuring excellent fit, finish and functionality. And only GM Accessories are backed by GM's 3-year/60,000 km New Vehicle Limited Warranty.* They can also be included in your new-vehicle lease or finance agreement through GMAC. Ask your dealer for a complete list of the GM Accessories available for Malibu and Malibu Maxx, or visit gmcanada.com

*Whichever comes first, when permanently installed by the dealer at the time you purchase or lease your new vehicle.



ONSTAR

OnStar* uses advanced communications technology to enhance your safety, security and convenience.

OnStar Advisors can provide a wealth of information and perform a variety of diagnostic services. They can

also provide assistance in an emergency. No wonder more than 4 million people have become OnStar subscribers and over 12 million calls are made each month on the built-in voice-activated, hands-free system. OnStar and one year of the Safe & Sound Plan are standard on Malibu and Malibu Maxx LTZ models and is available on LT and SS models. See your dealer for more information on plans and services.



*OnStar services require vehicle electrical system (including battery), wireless service, and GPS satellite signals to be available and operating for features to function properly. Not all OnStar features are available on all vehicles. OnStar acts as a link to existing emergency service providers. OnStar Hands-Free Calling requires a Hands-Free enabled vehicle, prepaid minutes and existing OnStar service contract. Subscription Service Agreement required.

XM SATELLITE RADIO

What's convinced more than six million people to subscribe to XM Satellite Radio? How about the largest playlist on the planet, with musical genres that span everything from decades to dance, rock to rap and country to classical – broadcasting the most commercial-free music in digital quality sound? Or is it the news, talk, comedy and sports channels – including more than 1,000 NHL games – and all available from coast to coast? XM has revolutionized radio as we know it. And now you can enjoy XM Satellite Radio in your next General Motors vehicle – GM is the first automaker to offer factory-installed satellite receivers. Ask your dealer for more information.



*Includes three free trial months beyond which service fees apply. Available in 10 Canadian provinces and 48 contiguous United States.

MALIBU STANDARD & OPTIONAL FEATURES

SAFETY AND SECURITY

	LS SEDAN	LT SEDAN/MAXX	LTZ SEDAN/MAXX	SS SEDAN/MAXX
Air bags – dual-stage, driver and front-passenger, frontal	S	S	S	S
Air bags – front to rear, side head curtain	S	S	S	S
Air bags – driver and front-passenger, seat-mounted side-impact	0 ¹	0 ^{1,2}	S	S
Brake/transmission shift interlock	S	S	S	S
Door locks – power, programmable with lock-out protection	S	S	S	S
Headlights – Daytime Running Lights with automatic light control	S	S	S	S
Keyless entry system – extended range remote, includes Panic feature	S	S	S	S
OnStar In-Vehicle Communications and Assistance Service – includes one-year Safe & Sound Plan	–	0 ^{3/0}	S	0
Pedals – power adjustable brake and accelerator	–	0 ⁴	S	S
Safety restraints – LATCH (Lower Anchors and top Tethers for Children), rear seats	S	S	S	S
Theft-deterrent system – content theft alarm, audible/visible	S	S	S	S
Theft-deterrent system – PASS-Key III+	S	S	S	S
Traction assist – Enhanced Traction System (ETS)	–	0 ^{5/S}	S	–
Traction control – electronic, full-function, all-speed	–	–	–	S
Safety Package – includes driver and front-passenger, seat-mounted side-impact air bags and 4-wheel disc brakes with anti-lock braking system (ABS)	0	0	–	–

MECHANICAL

	LS SEDAN	LT SEDAN/MAXX	LTZ SEDAN/MAXX	SS SEDAN/MAXX
Battery – with run-down protection	S	S	S	S
Brakes – power, front disc/rear drum	S	S/-	–	–
Brakes – power, 4-wheel disc	0 ¹	0 ^{1,5/S}	4-wheel disc	S
Brakes – 4-wheel anti-lock braking system (ABS)	0 ¹	0 ^{1,5/S}	S	S
Drive – front-wheel	S	S	S	S
Engine – 2.2L ECOTEC I-4 with MFI Horsepower – 144 @ 5600 rpm; Torque – 155 lb.-ft. @ 4000 rpm	S	S/-	–	–
Engine – 3.5L V6 VVT with SFI Horsepower – 217 @ 5800 rpm; Torque – 217 lb.-ft. @ 4000 rpm	–	0 ^{6/S}	S	–
Engine – 3.9L V6 VVT with SFI Horsepower – 240 @ 5900 rpm; Torque – 241 lb.-ft. @ 2800 rpm	–	–	–	S
Engine – block heater	0	0 ^{6/S}	S	S
Exhaust system – aluminized stainless steel	S	S	S	S
Exhaust system – single chrome tip	–	–	S	–
Exhaust system – dual chrome tips	–	–	–	S
Steering – electric power, variable-effort, rack-and-pinion	S	S	S	–
Steering – power, rack-and-pinion, hydraulic assist	–	–	–	S
Suspension – 4-wheel independent	S	S	S	S
Suspension – Sport	–	–	–	S
Transmission – 4-speed automatic with overdrive	S	S	S	–
Transmission – 4-speed automatic with tap-up/tap-down Driver Manual Shift Control	–	–	–	S
Vehicle starter system – remote	–	S	S	S

TOWING

2.2L ECOTEC I-4 3.63 final drive ratio; 454 kg (1000 lb.) maximum gross trailer weight*
3.5L V6 VVT 3.05 final drive ratio; 454 kg (1000 lb.) maximum gross trailer weight*
3.5L V6 VVT 3.29 final drive ratio; 454 kg (1000 lb.) maximum gross trailer weight*
3.9L V6 VVT 3.69 final drive ratio; 454 kg (1000 lb.) maximum gross trailer weight*

*When properly equipped, includes weight of trailer, cargo, passengers and equipment. All towing recommendations are subject to change. Trailer tongue load should be 10% of the maximum trailer weight but should not exceed the load rating specified for that vehicle, engine or hitch combinations. See your dealer or refer to the Malibu Owner's Manual for details.

EXTERIOR

	LS SEDAN	LT SEDAN/MAXX	LTZ SEDAN/MAXX	SS SEDAN/MAXX
Fog lights	–	0 ⁴	S	S
Glass – Solar-Ray, tinted	S	S	S	S
Mirrors – power remote control, black	S	–	–	–
Mirrors – power remote control, body-colour	–	S	–	S
Mirrors – power remote control, heated, body-colour	–	–	S	–
Mouldings – bodyside, body-colour with black rockers	S	–	–	–
Mouldings – bodyside, body-colour with body-colour rockers	–	S	–	S
Mouldings – bodyside, body-colour with chrome insert and body-colour rockers	–	0 ⁴	S	–
Skylights – fixed rear, includes retractable sunshades	–	–/S	–/S	–/S
Spoiler – rear deck-lid	–	0 ^{7/-}	S/-	S/-
Spoiler – rear, with rear window wiper	–	–/0	–/S	–/S
Sunroof – power, sliding glass panel, express-open feature	–	0	0	0
Tires – P205/65R15 all-season	S	–	–	–
Tires – P215/60R16 all-season	–	S	–	–
Tires – P225/50R17 all-season	–	–	S	–
Tires – P225/50R18 all-season	–	–	–	S
Tires – P225/50R18 summer performance	–	–	–	0
Wheels – 15" x 6.5" steel, bolt-on wheel covers (A)	S	–	–	–
Wheels – 16" x 6.5" steel with sterling silver-painted cover (B)	–	S	–	–
Wheels – 16" x 6.5" flangeless machined-face aluminum (E)	–	0 ^{7/0}	–	–
Wheels – 17" X 7" Chrome-Tech aluminum (C)	–	–	S	–
Wheels – 18" x 7" Sport aluminum (D)	–	–	–	S
Windshield wipers – 2-speed with variable delay (intermittent)	S	S	S	S
Sport Package – includes 16" flangeless machined-face aluminum wheels (E) and rear deck-lid spoiler	–	0 ^{7/-}	–	–
Sun and Sound Package – includes power sunroof and AM/FM stereo with in-dash 6-disc CD changer, auto tone control and Radio Data System (RDS)	–	–/0	–/0	–/0

INTERIOR

	LS SEDAN	LT SEDAN/MAXX	LTZ SEDAN/MAXX	SS SEDAN/MAXX
Air conditioning – manual	S	S	–	–
Air conditioning – automatic climate control	–	–	S	S
Auxiliary power outlet	S	S	S	S
Cargo area – rear, 2-sided adjustable and reversible cargo panel and cargo mat	–	–/S	–/S	–/S
Cargo convenience nets – two, rear sides	–	S/-	S/-	S/-
Console – front floor with armrest, storage, front and rear cupholders	S	S	S	S
Cruise control – steering wheel-mounted, electronic with resume, coast and decelerate/accelerate features	S	S	S	S
Defogger – electric rear-window	S	S	S	S
Floor mats – front and rear, carpeted	S	S	S	S
Heater ducts – rear seat, floor	S	S	S	S
Instrumentation – analogue gauges (includes speedometer, tachometer, coolant temperature and fuel gauge)	S	S	S	S
Instrumentation – Driver Information Centre (includes clock, exterior temperature display, GM Oil Life System and programmable features)	S	S	S	S
Lights – front courtesy, illuminated entry/exit, delayed illumination and theatre dimming	S	S	S	S
Lights – dual front reading	–	S	S	S
Lights – dual rear reading	–	0 ⁴	S	–
Mirror – rear-view electrochromic auto-dimming with compass	–	0 ⁴	S	–
Steering column – tilt and telescopic adjustable	S	S	S	S

INTERIOR (continued)

	LS SEDAN	LT SEDAN/MAXX	LTZ SEDAN/MAXX	SS SEDAN/MAXX
Steering wheel – 4-spoke	S	S	–	–
Steering wheel – 4-spoke, leather-wrapped with sound system controls and leather-wrapped shifter	–	0 ⁴	S	–
Steering wheel – 3-spoke, leather-wrapped with sound system controls and leather-wrapped shifter	–	–	–	S
Sunshades – LH and RH padded; non-illuminated vanity mirrors with extensions	S	–	–	–
Sunshades – LH and RH padded; illuminated driver vanity mirror with extensions	–	S	–	S
Sunshades – LH and RH padded; illuminated driver and passenger vanity mirror with extensions	–	0 ⁴	S	–
Trim accents – simulated walnut burl (replaces gunmetal trim accents with Ebony interior)	–	0	0	–
Trunk/liftgate – release, power remote	S	S	S	S
Universal home remote – 3-channel transmitter	–	–	S	–
Windows – power, driver's express-down feature and rear passenger window lock-out features	S	S	S	S
Luxury and Convenience Package – includes fog lamps, 6-way power driver's seat adjuster, heated front seats, leather-wrapped steering wheel with sound system controls, leather-wrapped shifter, power adjustable pedals, electrochromic auto-dimming interior rear-view mirror with compass, rear reading lights, illuminated passenger vanity mirror and bodyside moulding with chrome insert	–	0	–	–

SEATS

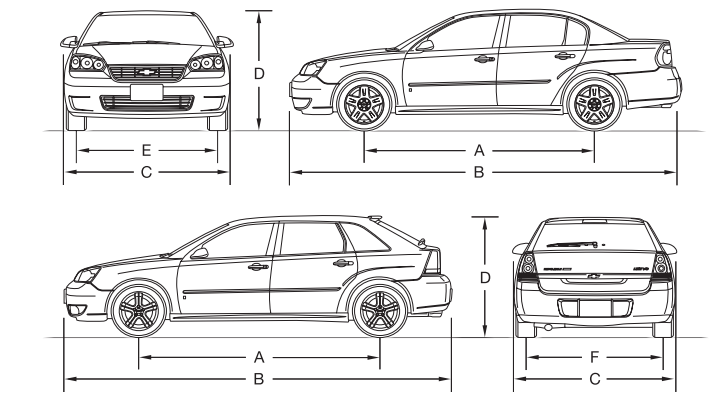
	LS SEDAN	LT SEDAN/MAXX	LTZ SEDAN/MAXX	SS SEDAN/MAXX
Cloth reclining front buckets	S	–	–	–
Custom cloth reclining front bucket seats	–	S	–	–
Reclining front bucket seats with UltraLux and leather-accented seating surfaces	–	–	S	–
Reclining front bucket seats with sport cloth and leather-accented seating surfaces	–	–	–	S
Heated, driver and front-passenger seats	–	0 ⁴	S	–
Power driver height adjuster	S	S	S	S
Power 6-way driver's seat adjuster	–	0 ⁴	S	S
Manual 2-way driver lumbar adjuster	–	S	S	S
Flat-folding front-passenger seat	–	–/S	–/S	–
Multi-Flex seating – rear-seat, 60/40 split-folding, sliding/reclining, folding armrest with storage and 2 cupholders	–	–/S	–/S	–/S
Seatback – rear, 60/40 split-folding	S	S/-	S/-	S/-

ENTERTAINMENT SYSTEMS

	LS SEDAN	LT SEDAN/MAXX	LTZ SEDAN/MAXX	SS SEDAN/MAXX
All Malibu sound systems include an electronically tuned AM/FM stereo with seek up/down, digital clock and TheftLock				
AM/FM stereo with CD player	S	–	–	–
AM/FM stereo with CD player, auto tone control and Radio Data System (RDS)	–	S	S	S
AM/FM stereo with in-dash 6-disc CD changer, auto tone control and Radio Data System (RDS)	–	0	0	0
XM Satellite Radio ⁸	–	0	0	S
Rear audio controls with 2 wireless headphones	–	–	–/S	–/S
4-speaker sound system	S	–	–	–
6-speaker premium sound system	–	S	S	S
DVD Rear Entertainment System – includes console-mounted 178 mm (7 in.) LCD colour monitor, DVD player, video camera and video game input jacks, 2 wireless headphones, remote control and power sunroof	–	–/0	–/0 ⁹	–/0 ⁹

S – Standard. 0 – Optional individually or in combination with other optional equipment.
 1 – Included with Safety Package.
 2 – Requires 3.5L V6 engine.
 3 – Requires Safety Package or 3.5L V6 engine with seat-mounted side-impact air bags.
 4 – Included with Luxury and Convenience Package.
 5 – Included with available 3.5L V6 engine.
 6 – Includes 4-wheel disc brakes with anti-lock braking system (ABS), Enhanced Traction System (ETS) and engine block heater.
 7 – Included with Sport Package.
 8 – Includes three free trial months beyond which service fees apply. Available in 10 Canadian provinces and 48 contiguous United States.
 9 – Deletes rear audio controls.

DIMENSIONS



EXTERIOR, mm (in.)	SEDAN	MAXX
Wheelbase (A)	2700 (106.3)	2852 (112.3)
Length (B)	4783 (188.3)	4770 (187.8)
Width (C)	1776 (69.9)	1773 (69.8)
Height (D)	1461 (57.5)	1476 (58.1)
Front Tread (E)	1524 (60.0)	1524 (60.0)
Rear Tread (F)	1506 (59.3)	1529 (60.2)

INTERIOR, mm (in.) front/rear

Headroom	1006/955 (39.6/37.6)	1001/1001 (39.4/39.4)
Legroom	1064/978 (41.9/38.5)	1064/1041 (41.9/41.0)
Shoulder room	1440/1425 (56.7/56.1)	1440/1410 (56.7/55.5)
Hip room	1351/1331 (53.2/52.4)	1359/1331 (53.5/52.4)

CAPACITIES/WEIGHT

Trunk, L (cu. ft.)	463 (15.4)	646 (22.8)
Fuel tank, L (imp. gal.)	61 (13.4)	62 (13.5)
Curb Weight (est.), kg. (lb.) – LS	1416 (3122)	–
	– LT	1431 (3155)
	– LTZ	1530 (3373)
	– SS	1558 (3435)
– LT	1607 (3543)	
– LTZ	1631 (3596)	
– SS	1655 (3649)	

WHEELS



A – 15" bolt-on wheel cover
 B – 16" sterling silver-painted cover
 C – 17" Chrome-Tech aluminum wheel
 D – 18" Sport aluminum wheel
 E – 16" flangeless machined-face aluminum wheel

EXTERIOR COLOURS



67 Silverstone Metallic

40 White

63 Sport Red Metallic†

41 Black

78 Golden Pewter Metallic†

21 Laser Blue Metallic

53 Amber Bronze Metallic†

25 Dark Blue Metallic†

15 Sandstone Metallic†

75 Dark Gray Metallic†

Colours may not be exactly as illustrated due to restrictions of the printing process. Please see your Sales Consultant for specific colour and model availability.

INTERIOR FABRICS



LS Cloth Seats
83B – Medium
Titanium



LT Custom
Cloth Seats
33C – Cashmere



LTZ UltraLux and
Leather-accented
Seating Surfaces
842 – Light
Titanium



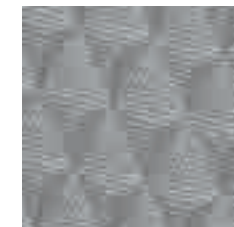
SS Sport Cloth
and Leather-
accented
Seating Surfaces
193 – Ebony



LS Cloth Seats
33B – Cashmere



LTZ UltraLux and
Leather-
accented
Seating
Surfaces
192 – Ebony



LT Custom Cloth
Seats
83C – Medium
Titanium



LTZ UltraLux and
Leather-
accented
Seating
Surfaces
702 – Light
Neutral

EXTERIOR/INTERIOR COLOUR COMPATIBILITY						
Exterior	Interior	19 – Ebony	33 – Cashmere	70 – Light Neutral	83 – Medium Titanium	84 – Light Titanium
15 – Sandstone Metallic†	15 – Sandstone Metallic†	•	•	•	•	•
21 – Laser Blue Metallic	21 – Laser Blue Metallic	•	•	•	•	•
25 – Dark Blue Metallic†	25 – Dark Blue Metallic†	•	•	•	•	•
40 – White	40 – White	•	•	•	•	•
41 – Black	41 – Black	•	•	•	•	•
53 – Amber Bronze Metallic†	53 – Amber Bronze Metallic†	•	•	•	•	•
63 – Sport Red Metallic†	63 – Sport Red Metallic†	•	•	•	•	•
67 – Silverstone Metallic	67 – Silverstone Metallic	•	•	•	•	•
75 – Dark Gray Metallic†	75 – Dark Gray Metallic†	•	•	•	•	•
78 – Golden Pewter Metallic†	78 – Golden Pewter Metallic†	•	•	•	•	•

†Not available on SS models.

THE GM WARRANTY:†

The New Vehicle Limited Warranty is your promise of total warranty protection. It applies to the first owner and all future owners of the vehicle, and covers repairs to correct vehicle defects related to materials or workmanship during the warranty period.

The warranty includes:

- 3-year/60,000 km* Base warranty coverage
- 6-year/160,000 km* rust-through perforation coverage
- 8-year/130,000 km* coverage on catalytic converters and powertrain control modules (PCMs).

†Conditions and limitations apply. *Whichever comes first.

OTHER OWNERSHIP PRIVILEGES AND PROGRAMS:†

- **Roadside Assistance** – 24/7 service via toll-free number during the Base warranty period, anywhere in Canada or the United States
- **Courtesy Transportation** – may be offered during the Base warranty period
- **GM Protection Plan (GMPP)** – the only extended services contract backed by the resources and commitment of General Motors, GMPP may be purchased at the time of your sale or lease, or subsequently during the Base warranty period†
- **GM Goodwrench Service** – with GM-certified technicians and GM-approved parts, nobody knows your GM vehicle better.

†Conditions and limitations apply.

TO HELP YOU PURCHASE OR LEASE A NEW VEHICLE:

- **GMAC Financing** – on the spot financing at your GM dealership††
- **GMAC SMARTLEASE** – a smart alternative to traditional financing††
- **GM Student Bonus Program** – GM will cover the first two purchase finance or lease payments and the lease security deposit on eligible new GM vehicles for students and recent graduates of high school, college or university†
- **The GM Card** – eligible cardholders may be able to redeem up to \$3500 on GM Card® Earnings toward the total purchase price or lease down payment on selected vehicles†. For more information on The GM Card please call 1-800-461-3279.

†Conditions and limitations apply. ††Subject to eligibility.

INFORMATION RESOURCES:

You can find more information about these programs from your GM dealer, or at these information centres:

- The GM website at gmcanada.com
- The GM Customer Communication Marketing Centre at 1-800-GM-DRIVE (1-800-463-7483 or 1-800-263-3830 for TDD users)
- For information about GMAC visit gmcanada.com or call 1-800-616-4622.

A WORD ABOUT THIS BROCHURE

Some of the equipment shown or described throughout this brochure may be available at extra cost. We have tried to make this brochure comprehensive and factual. We reserve the right, however, to make changes at any time, without notice, in prices, colours, materials, equipment, specifications, models and availability. Specifications, dimensions, measurements, ratings and other numbers in this brochure and other printed materials provided at the dealership or affixed to vehicles are approximates based upon design and engineering drawings and prototypes and laboratory tests. Your vehicle may differ due to variations in manufacture and equipment. Since some information may have been adapted since the time of the printing, please check with your GM dealer for complete details. General Motors of Canada Limited reserves the right to lengthen or shorten the model year for any product, for any reason, or to start and end model years at different times.

A WORD ABOUT ASSEMBLY

GM vehicles are equipped with engines and components produced and assembled by different operating units of General Motors, its subsidiaries and suppliers and these engines and components may change or be obtained from different sources from time to time. All such engines and components are approved for use in GM vehicles. Certain equipment ordered may be unavailable at the time of assembly and we suggest that you verify that your vehicle includes the equipment you ordered, or if there are changes, that they are acceptable to you.

TRADEMARKS

The marks appearing in this brochure including, but not limited to: General Motors, GM, the GM Canada emblem, the GM Canada website address, the GM Accessories logo, Buick, Cadillac, Chevrolet, the Chevrolet emblem, GMC, Hummer, Pontiac, Saab, Saturn, HHR, Malibu, Solstice and their respective logos, emblems, slogans and vehicle model names and body designs; and other marks such as Dexron, MagBeam, Multi-Flex, Solar-Ray, SMARTLEASE and UltraLux are trademarks of General Motors Corporation and/or General Motors of Canada Limited, its subsidiaries, affiliates or licensors.

GMAC is a registered trademark of the General Motors Acceptance Corporation.

OnStar, the OnStar logo and the OnStar button are registered trademarks of the OnStar Corporation.

PASS-Key III+ and TheftLock are registered trademarks of Delphi Automotive Systems.

Radio Data System (RDS) is a registered trademark of the U.S. National Association of Broadcasters.

The XM name and related logos are registered trademarks of XM Satellite Radio Inc.

The XM name and related logos are registered trademarks of XM Satellite Radio Inc.

COPYRIGHT

©Copyright 2006 General Motors of Canada Limited. All Rights Reserved. All text, images, graphics, and other materials in this brochure are subject to the copyright and other intellectual property rights of General Motors Corporation and/or General Motors of Canada Limited. These materials may not be reproduced, distributed or modified without the express written permission of General Motors Corporation and/or General Motors of Canada Limited.

Printed in Canada, July 2006.

