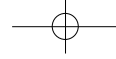


 **2007 TAHOE & SUBURBAN**



2007 TAHOE &
SUBURBAN





Tahoe LTZ 4x4, shown in Silver Birch Metallic with available features.

At right: Suburban 1500 LTZ 4x4, shown in Dark Blue Metallic.
(Pre-production model shown. Actual production model may vary.)

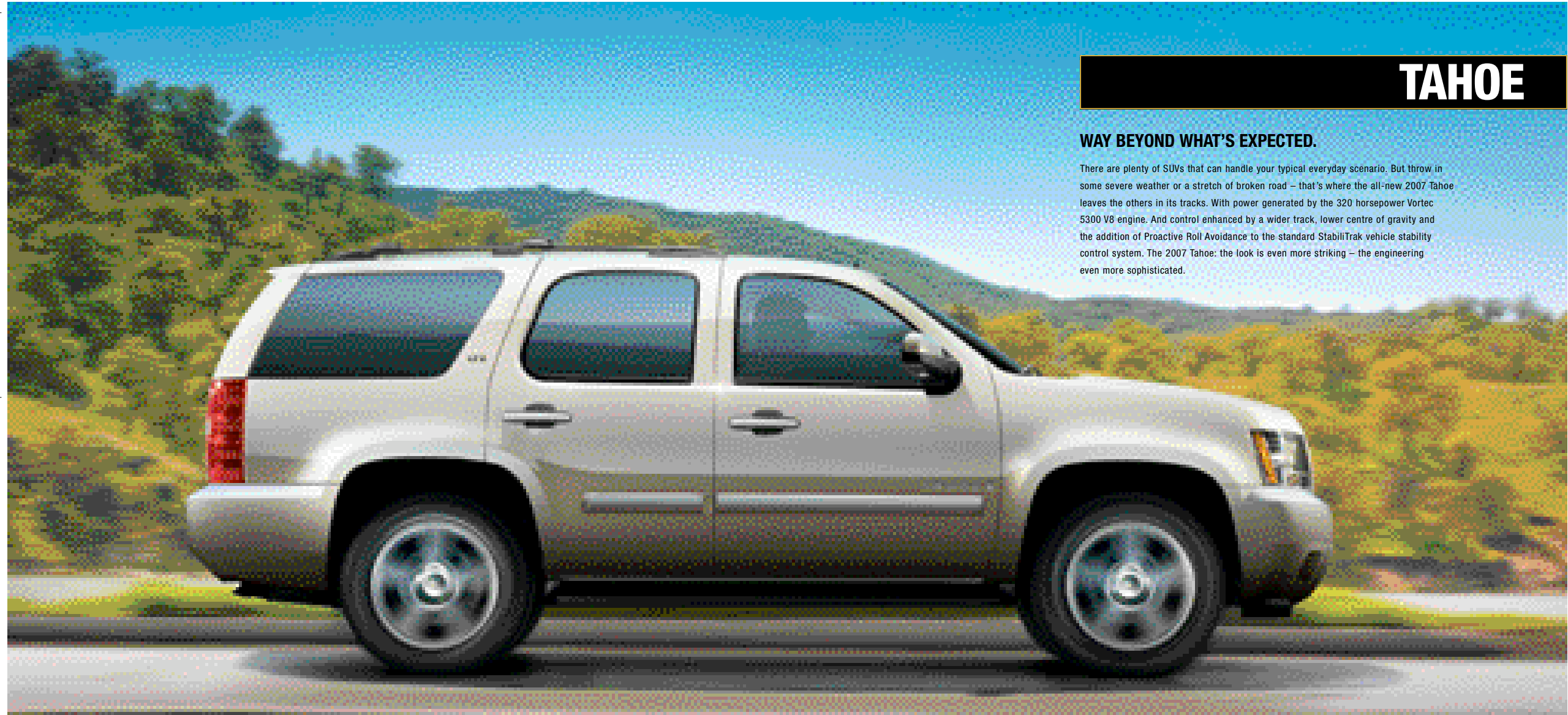
2007 TAHOE & SUBURBAN

HOW CAN YOU TOP TAHOE OR SUBURBAN? WE'LL SHOW YOU.

They are the names that have continually raised the bar for full-size SUV capability. And now comes the next major step forward: the introduction of the all-new 2007 Tahoe and Suburban. They not only increase output with enhanced Vortec V8 power – they also improve fuel efficiency, thanks to the Active Fuel Management™ system. They also raise the civilization quotient with available segment-exclusive power release fold-and-tumble heated second-row seats, as well as an available power liftgate. Safety is equally evolved, with an available new rearview camera system that works with Ultrasonic Rear Parking Assist to detect objects behind you. So just how high is the bar set with the all-new 2007 Tahoe and Suburban? You tell us – take one for a test drive.

For more information on the 2007 Tahoe or Suburban visit our website at tahoe.gmcanada.com or suburban.gmcanada.com





TAHOE

WAY BEYOND WHAT'S EXPECTED.

There are plenty of SUVs that can handle your typical everyday scenario. But throw in some severe weather or a stretch of broken road – that's where the all-new 2007 Tahoe leaves the others in its tracks. With power generated by the 320-horsepower Vortec 5300 V8 engine. And control enhanced by a wider track, lower centre of gravity and the addition of Proactive Roll Avoidance to the standard StabiliTrak vehicle stability control system. The 2007 Tahoe: the look is even more striking – the engineering even more sophisticated.

Tahoe LTZ 4x4, shown in Gold Mist Metallic with available features.

TAHOE INTERIOR



The rear-seat DVD entertainment system features a new, larger, fold-down 203 mm (8-in.) colour LCD monitor, as well as audio/video input jacks for camcorder playback and video games, two wireless infrared two-channel headphones, and a remote control unit. Available on Tahoe and Suburban.



Tahoe LTZ interior, shown in Light Cashmere with available features.

MORE WAYS TO MAKE YOU COMFORTABLE.

It's not just the LTZ's new heated power 12-way leather-appointed front bucket seats that increase your comfort level in the new Tahoe. The LTZ also features power release fold-and-tumble heated

second-row seats. And all Tahoes include tri-zone climate controls. So it doesn't matter how many people you bring along for the adventure – Tahoe's highly refined cabin makes everyone feel right at home.

KEY FEATURES:

- Seating for six; seating for up to nine available
- 40/20/40 split Custom cloth front bench seat on LS
- Leather-appointed seating standard on LTZ, available on LT
- Power six-way driver's seat on LS and LT; heated power 12-way front bucket seats standard on LTZ, available on LT
- Second-row 60/40 split-folding seat; second-row reclining bucket seats available on LT and LTZ
- Third-row two-passenger removable 50/50 split-bench seat standard on LTZ, available on other models
- Tri-zone climate controls
- Rear DVD entertainment system available
- XM Satellite Radio receiver standard on LTZ, available on all other models
- Head curtain side-impact air bags, standard on LTZ, available on all other models.

SUBURBAN

THE REINVENTION OF THE FULL-SIZE SUV.

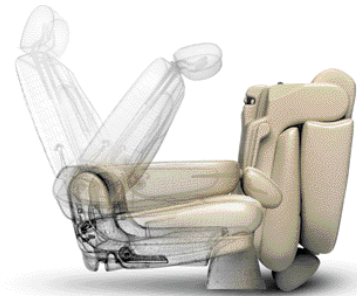
In the 70 years since making its debut as the world's first SUV, Chevrolet Suburban has always remained a step ahead of the pack. For 2007, the slate was wiped clean and our engineers and designers responded by building not just the most capable full-size SUV in Chevrolet history – but also the SUV that leads the entire category with its V8 horsepower and its unequalled passenger capacity.* Still the first name in SUVs: Suburban.

*Horsepower and passenger capacity based on 2006 GM Large Utility segment and latest available competitive information at the time of printing. Excludes other GM vehicles.



Suburban 1500 LTZ 4x4, shown in Dark Blue Metallic.
(Pre-production model shown. Actual production model may vary.)

SUBURBAN INTERIOR



Suburban's cabin is as flexible as it is spacious, thanks to such innovative design features as the LTZ's power release fold-and-tumble heated 2nd-row bucket seats, in addition to a removable, fold-and-tumble third-row bench seat.

Tri-zone climate controls allow separate temperature settings for the driver, front-row passengers and rear-seat passengers. Selected models feature automatic tri-zone controls; other models include manual controls.



MAKE ROOM FOR THE NEW LEADER.

Make room for the SUV with the most seating options and cargo room in its class* – the 2007 Suburban. But there's much more to the new Suburban cabin than space. The seating is as flexible as it is comfortable, enabling you to configure the interior to match your mix of passengers

and cargo. Look a little closer and you'll notice Suburban's exemplary fit and finish, highlighted by exceedingly tight gaps between trim panels. You have room in your life for the new Suburban.

*Based on 2006 GM Large Utility segment and latest available competitive information at the time of printing. Excludes other GM vehicles. Cargo room is with second-row seats folded and third-row seats removed. Cargo and load capacity limited by weight and distribution.

KEY FEATURES:

- Seating for up to nine
- 40/20/40 split Custom cloth front bench seat on LS
- Leather-appointed seating standard on LTZ, available on LT
- Power six-way driver's seat on LS and LT; heated power 12-way front bucket seats standard on LTZ, available on LT
- Second-row 60/40 split-folding seat; second-row reclining bucket seats available on LT and LTZ

- Power release fold-and-tumble second-row seats with heated seat cushions available
- Third-row two-passenger removable 50/50 split-bench seat
- Tri-zone climate controls
- Power adjustable pedals, standard on LTZ models, available on other models.

Suburban LTZ interior, shown in Light Cashmere with available features.

TAHOE & SUBURBAN CONTROLS



A rearview camera system is available on LT and LTZ models. It allows the driver to see obstacles displayed on the navigation screen. The camera works in concert with the available Ultrasonic Rear Parking Assist system.



Tahoe LTZ instrument panel, shown in Ebony/Light Cashmere with available features.

YOU'RE INFORMED. THEY'RE ENTERTAINED.

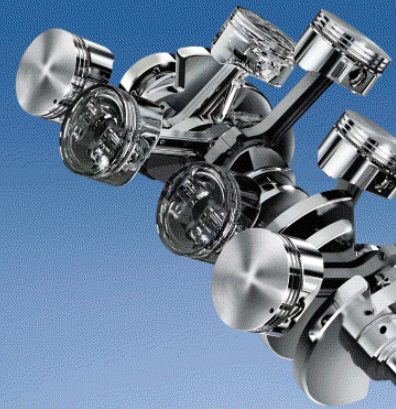
There's lots of useful information at your disposal inside Tahoe and Suburban, whether it's relayed through the comprehensive standard Driver Information Centre or displayed on the available navigation system monitor. For your passengers, the emphasis is on entertainment,

with features that include a standard auxiliary input jack for a portable MP3 player and an available XM Satellite Radio receiver. There are more than enough perks to go around in Tahoe and Suburban.

KEY FEATURES:

- Remote vehicle starter standard on LTZ, available on other models
- OnStar System with one-year Safe & Sound Plan
- Interior electrochromic auto-dimming rear-view mirror with compass and exterior temperature readouts
- Comprehensive Driver Information Centre
- Personalization of comfort, convenience and safety features
- Steering wheel audio system and cruise control switches
- Tire pressure monitoring system
- DVD navigation system, available on LT and LTZ
- Rearview camera system, available on LT and LTZ.

TAHOE & SUBURBAN POWER & TOWING



Tahoe and Suburban Vortec 5300 V8 engines feature the Active Fuel Management™ system to significantly increase fuel efficiency. The system shuts down four cylinders under low-demand operating conditions, such as when driving at highway speeds on level stretches of road. When power demands increase, the engine switches back to eight-cylinder operation. Cylinder deactivation and reactivation are barely perceptible.



Tahoe LT, shown in Silver Birch Metallic.

INCREASED POWER AND FUEL EFFICIENCY – WHAT'S NOT TO LIKE?

Typically you're asked to trade off power for increased fuel efficiency. Well, there's nothing typical about Tahoe and Suburban. Their new Generation IV Vortec V8 engines produce more horsepower while realizing enhanced fuel efficiency, due to the ingenious Active Fuel Management™ system. Environmental

responsibility is further enhanced by an available 85 percent ethanol-capable version of the Vortec 5300 V8. These new V8s put it all together: the horsepower and torque ratings you need to haul a trailer, yet the fuel efficiency you need to reduce operating costs. No trade-off required.

KEY FEATURES:

- 320 hp Vortec 5300 V8 standard
- 85 percent ethanol-capable Vortec 5300 V8 FlexFuel engine standard on Tahoe and Suburban 1500 4x4 models, available on 1500 2WD models
- 350 hp* Vortec 6000 V8, standard on Suburban 2500 models

- Active Fuel Management™ system on Vortec 5300 V8 engine and Vortec 6000 V8 VVT (Suburban 1500 models, Fall 2006)
- Towing capacity of up to 3493 kg (7700 lb.) on Tahoe; 4400 kg (9700 lb.) on Suburban 2500 2WD model (when properly equipped)
- Standard tow/haul mode.

*Horsepower rating is estimated.

TAHOE & SUBURBAN TECHNOLOGY



YOU WANTED IT. WE BUILT IT.

We built the all-new 2007 Tahoe and Suburban around a very simple concept – to provide more of what people really want from their full-size SUV. Our engineers then went to work to make it happen. Their efforts produced a number of enhancements that span everything from reduced noise and vibration in the cabin to heightened safety and convenience, and from increased power to greater versatility. Here's a short list of the technical highlights.

1 AUTOTRAC 4X4 SYSTEM

The Autotrac active transfer case is standard on all Tahoe and Suburban 4x4s. It can adjust to changing road conditions automatically in the Auto 4WD mode. You can also select traditional 2HI, 4HI, 4LO and Neutral modes.

- **AUTO 4WD** detects rear-wheel slippage and automatically engages 4WD as road conditions dictate
- **2HI** is the 2WD setting for most driving conditions and optimal fuel economy
- **4HI** is a full-time 4WD mode for snow, ice and most off-road conditions
- **4LO** is the low-speed 4WD setting for extreme conditions, such as steep hills, deep sand, mud or snow
- **NEUTRAL** is also provided, permitting flat towing.

2 AUTOMATIC LOCKING REAR DIFFERENTIAL

The standard automatic locking rear differential helps get your vehicle moving when one rear wheel loses traction by directing power to the wheel with the better grip. The benefits include:

- Improved performance on and off road
- Full lockup provides maximum drivepower to both rear wheels
- Operates automatically, without the need for driver intervention.

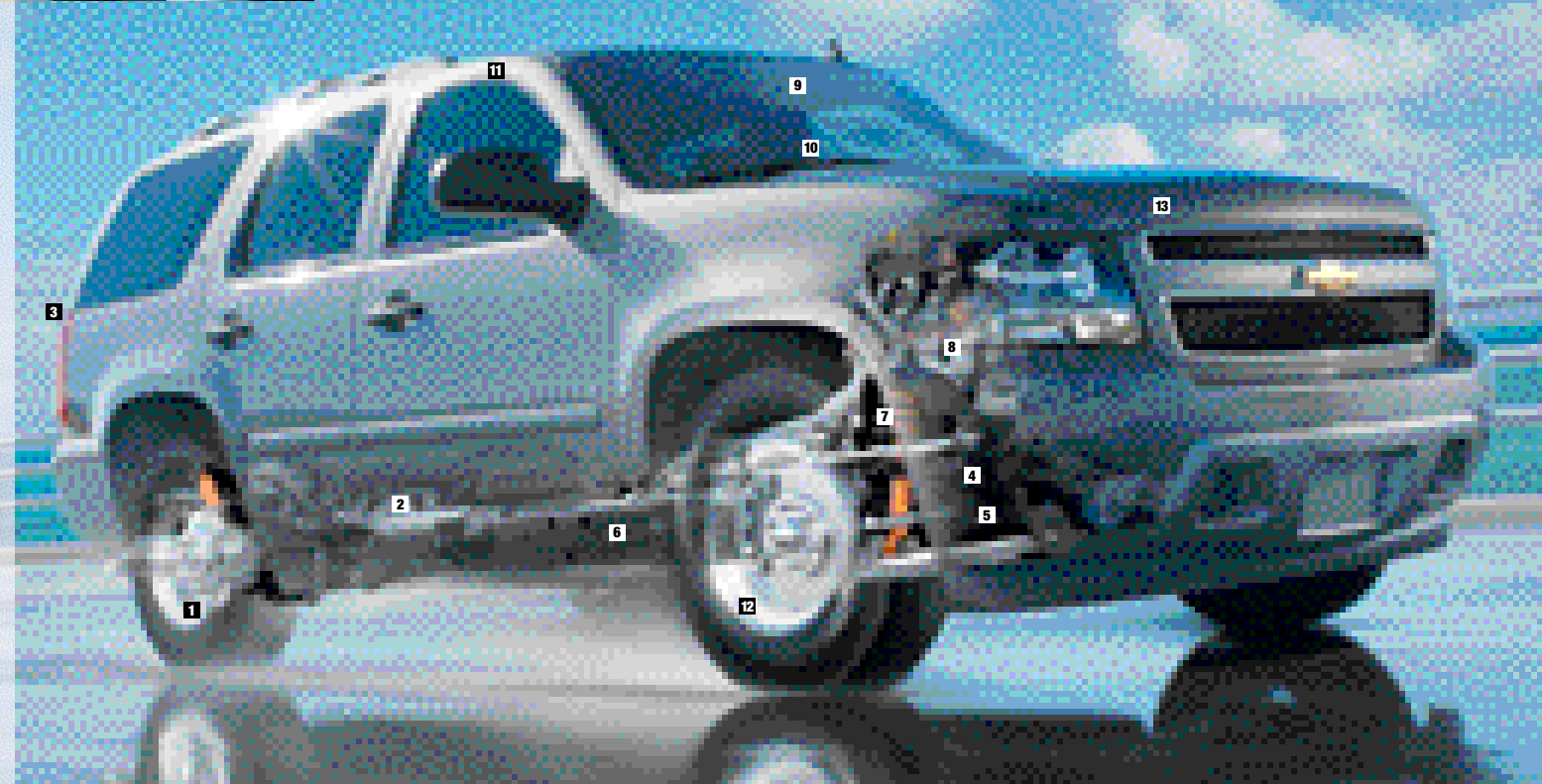
3 REARVIEW CAMERA SYSTEM. Available with Ultrasonic Rear Parking Assist, the rearview camera system enables you to see obstacles behind the vehicle displayed on the available navigation system monitor, thanks to a camera mounted above the rear licence plate.

4 QUIET RIDE. Enhanced isolation from noise and vibration was accomplished by improving the mounting points for the axle, suspension and engine. A new flex coupling between the exhaust system and engine exhaust manifolds reduces noise produced by the exhaust system.

5 NEW RACK-AND-PINION STEERING. The re-engineered steering system delivers a more precise response to driver input. This was achieved through the redesign of several steering components and the front frame bay.

6 STIFFENED FRAME AND WIDER TRACK. Increased torsional rigidity is achieved through the use of stronger hydroformed rails in the all-new front frame section. This enhanced stiffness, in combination with wider front and rear track widths, increases ride stability.

7 NEW FRONT SUSPENSION. The all-new Tahoe and Suburban deliver improved ride and more agile handling. The new coil-over-shock front suspension design reduces vibration and can be tuned more precisely than a torsion bar design. Further isolating the passenger compartment from road vibration is the four-point mounting system on the front axle.



8 FLEXFUEL VORTEC 5300 V8 ENGINE. A FlexFuel version of the Vortec 5300 V8 engine can run on gasoline or a blend of 85 percent ethanol and 15 percent gasoline. E85 renewable fuel is made from bio-material, helping reduce carbon dioxide emissions, decrease greenhouse gases and

our dependence on petroleum. The FlexFuel Vortec 5300 V8 engine is standard on Tahoe and Suburban 1500 4x4 models and available on 1500 2WD models.
NOTE: E85 fuel availability is limited.

9 RAINSENSE WIPER SYSTEM. When engaged, the Rainsense moisture-sensing windshield wiper system's infrared sensor detects water or mist on the windshield and automatically activates the wipers to clear the windshield. The speed of the wipers' sweeping action is based on the intensity of precipitation. Standard on LTZ and available on LT.

10 HEATED WINDSHIELD WASHER FLUID SYSTEM. The system heats windshield washer fluid up to 70°C in just 40 seconds. Using the wipers, you can remove a thin layer of ice from the windshield without having to use a scraper. The system is included with the Rainsense wiper system.

11 NEW HEAD CURTAIN SIDE-IMPACT AIR BAGS.

Head curtain side-impact air bags* help reduce the risk of injuries to all outboard occupants in certain side impacts, providing enhanced protection for all outboard seating rows. When deployed, the air bags remain inflated in the unlikely event of a rollover, to help reduce the risk of ejection. Standard on LTZ, available on all other models.

12 STABILITRAK VEHICLE STABILITY CONTROL SYSTEM.

The standard StabiliTrak system continuously monitors steering angle, wheel speeds, brake pressure and lateral acceleration. If the system detects a lateral skid, it intervenes by adjusting brake pressure and engine power to help return your vehicle to its intended driving line. The new Proactive Roll Avoidance function is included with StabiliTrak to reduce a vehicle's tendency to roll over in a panic situation. Standard on 1500 models only.

13 AERODYNAMICS. The new Tahoe and Suburban have achieved a low drag co-efficient, based on learnings gained through extensive wind tunnel testing. The resulting form is sleek, with a contoured front end and trailing roof line. The low drag translates into improved fuel economy.

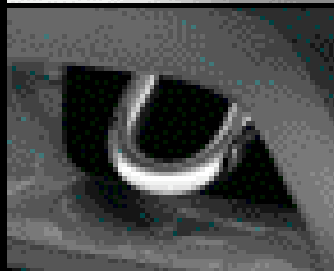
*A NOTE ON CHILD SAFETY: Always use safety belts and proper child restraints, even in vehicles equipped with air bags. Even with the Passenger Sensing System, children are safer when properly secured in a rear seat. Never place a rear-facing infant restraint in the front seat of any vehicle equipped with an active air bag. Refer to the vehicle Owner's Manual and child safety seat instructions for more information.

TAHOE & SUBURBAN ACCESSORIES

TAHOE AND SUBURBAN HAVE THEIR OWN PERSONALITIES. NOW ADD YOURS.

Tahoe and Suburban have strong characters all their own. Now it's your turn to personalize your vehicle with the added style and function provided by GM Accessories. They are the only accessories that are integrated into the process of designing your vehicle, ensuring excellent fit, finish and functionality. And only GM Accessories are backed by GM's 3-year/60,000 km New Vehicle Limited Warranty.* They can also be included in your new-vehicle lease or finance agreement through GMAC. Ask your dealer for a complete list of the GM Accessories available for Tahoe or Suburban, or visit gmcanada.com

*Whichever comes first, when permanently installed by the dealer at the time you purchase or lease your new vehicle.



GM Accessories available for Tahoe and Suburban include:

- Grille inserts
- Tubular assist steps
- Styled fuel door
- Brush grille guard
- Hard cargo carrier
- Side-window weather deflectors
- Rear fascia closeout
- Hitch-mounted bike/ski carrier
- Cargo tray
- Premium all-season floor mats and cargo mats
- Step shield
- 20 inch wheels
 - Five-spoke
 - Six-spoke
 - Twelve-spoke
- Tow hooks
- Moulded splash guards



COMMUNICATIONS AND ENTERTAINMENT TECHNOLOGY.



OnStar® uses advanced communications technology to enhance your safety, security and convenience. OnStar Advisors can provide a wealth of information and perform a variety of diagnostic services. They can also provide assistance in an emergency. No wonder more than 4 million people have become OnStar subscribers. OnStar and one year of the Safe & Sound Plan are standard on all Chevrolet Tahoe and Suburban models. The Directions & Connections Plan is available. See your dealer for more information on plans and services.

*OnStar services require vehicle electrical system (including battery), wireless service, and GPS satellite signals to be available and operating for features to function properly. Not all OnStar features are available on all vehicles. OnStar acts as a link to existing emergency service providers. Subscription Service Agreement required.



What's convinced more than six million people to subscribe to XM Satellite Radio? How about the largest playlist on the planet, with musical genres that span everything from decades to dance, rock to rap and country to classical – broadcast 100 percent commercial-free and in digital quality sound? Or is it the news, talk, sports and comedy channels – including more than 1,000 NHL games, and all available from coast to coast? XM has revolutionized radio as we know it. And now you can enjoy XM Satellite Radio in your next General Motors vehicle – GM is the first automaker to offer factory-installed satellite receivers. Ask your Chevrolet dealer for more information.

*Available in 10 Canadian provinces and 48 contiguous United States.

TAHOE/SUBURBAN STANDARD & OPTIONAL FEATURES

MODEL SELECTOR

Model	Drive	Standard GVWR ¹ kg (lb.)	Maximum Payload ² kg (lb.)	Max. Gross Trailer Weight ³ - kg (lb.)
1500 TAHOE	2WD	2994 (6600) ²	612 (1349)	3266 (7200)
	4x4	3175 (7000) ²	668 (1473)	3493 (7700) ²
1500 SUBURBAN	2WD	3266 (7200)	720 (1587)	3674 (8100)
	4x4	3357 (7400)	751 (1655)	3629 (8000)
2500 SUBURBAN	2WD	3901 (8600)	1162 (2561)	4400 (9700)
	4x4	3901 (8600)	1031 (2272)	4309 (9500)

¹ - Gross Vehicle Weight Rating (GVWR) includes vehicle, passengers, equipment and cargo. ² - When the third-row seat is specified, the GVWR is increased to 3221 kg (7100 lb.) for 2WD models, and 3311 kg (7300 lb.) for 4x4s. ³ - Payloads are approximate and will change with the addition of optional or aftermarket equipment. Consult your dealer or equipment supplier for details.
⁴ - Trailer Weight (also called Trailer Towing Capacity) is the weight of a trailer, its load or contents plus

SAFETY AND SECURITY

	LS	LT	LTZ
Air bags - dual-stage, driver and front-passenger, frontal with passenger-side air bag status indicator in overhead console and Passenger Sensing System	S	S	S
Air bags - front to rear, side head curtain with rollover sensor (includes third row when specified)	0	0	S
Door locks - power, programmable with lock-out protection	S	S	S
Headlights - dual halogen with automatic light control	S	S	S
Keyless entry system - remote	S	S	S
OnStar In-Vehicle Communications and Assistance Service - includes one-year Safe & Sound Plan	S	S	S
Safety restraints - LATCH (Lower Anchors and top Tethers for Children), all 2nd- and 3rd-row seating positions	S	S	S
Safety restraints - 3-point belts for all seating positions (when equipped with front bucket seats)	S	S	S
StabiliTrak - vehicle stability control system with Proactive Roll Avoidance and traction control system ¹	S	S	S
Theft-deterrent system - PASS-Key III+ and vehicle content theft alarm	S	S	S
Tire pressure monitor - except spare tire	S	S	S
Traction control - electronic, full-function, all-speed	S	S	S
Ultrasonic Rear Parking Assist - rear obstacle detection system with audible/visible warning	0	S	S

¹ 1500 models only.

MECHANICAL

Brakes - power-assisted, 4-wheel vented disc with 4-wheel anti-lock braking system (ABS) and dynamic rear proportioning (DRP)	S	S	S
Engine - Vortec 5300 V8 with Active Fuel Management™ (1500 models) ² Horsepower - 320 @ 5200 rpm; Torque - 340 lb.-ft. @ 4200 rpm	S	S	S
Engine - FlexFuel Vortec 5300 V8, capable of running on up to 85% ethanol (standard on 1500 4x4 models)	0	0	S
Engine - Vortec 6000 V8 with Variable Valve Timing (VVT) (Suburban 2500 models) Horsepower (estimated) - 350 @ 5400 rpm; Torque (estimated) - 360 lb.-ft. @ 4400 rpm	S	-	-
Engine oil cooler - heavy-duty, air-to-oil (Suburban 2500 models only)	S	S	-
Engine - block heater	S	S	S
Locking differential - rear	S	S	S
Remote vehicle starter - preparation package	S	S	-
Remote vehicle starter	0	0	S
Steering - power, rack-and-pinion	S	S	S
Suspension - Premium smooth ride (1500 models)	S	S	-
Suspension - heavy-duty handling and trailering (Suburban 2500 models)	S	S	-
Suspension - AutoRide, road-sensing, electronically controlled shock absorbers with automatic rear level control	-	-	S
Transfer case - Autotrac with electronic controls (4x4 models)	S	S	S
Trailering Equipment - heavy-duty, includes weight-distributing hitch platform with hitch receiver, 7-pin sealed wiring connector and trailer brake wiring harness	S	S	S
Transmission - 4-speed electronically controlled automatic with overdrive and tow/haul mode (heavy-duty on Suburban 2500 models)	S	S	S
Transmission oil cooler - heavy-duty, air-to-oil	S	S	S
Snowplow Prep Package - 2500 4x4 models only	0	0	-

² Suburban 1500 4x4 models produce 310 hp @ 5200 rpm (estimated) and 335 lb.-ft. of torque @ 4000 rpm (estimated).

EXTERIOR

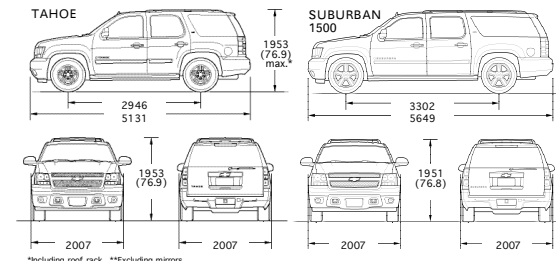
	LS	LT	LTZ
Assist steps - black	S	S	S
Bumpers - front and rear, colour-keyed fascia	S	S	S
Door handles - black	S	-	-
Door handles - colour-keyed	-	S	S
Fog lights - halogen	-	S	S
Glass - Solar-Ray tinted, deep-tinted on all windows behind front doors	S	S	S
Grille - chrome surround	S	S	S
Liftgate - includes liftglass	S	S	-
Liftgate - power, electric open and close with keyless remote control	-	0	S
Mirrors - manual foldaway power adjustable, heated (black on LS and colour-keyed on LT)	S	-	S
Mirrors - as above, includes manual extending and integrated turn signals	0	0	0
Mirrors - power foldaway, full-feature power adjustable, heated, driver-side electrochromic auto-dimming feature, reverse-tilt, side-entry illumination, integrated turn signals and colour-keyed	-	0	S
Mouldings - bodyside, colour-keyed	S	S	S
Rearview Camera System - reverse assist for parking or trailer towing (requires available Ultrasonic Rear Parking Assist, available integrated DVD Navigation System and head curtain side-impact air bags)	-	0	0
Roof rack - side rails	S	S	S
Roof rack - cross bars	0	S	S
Skid plates - includes aluminum front underbody shield from front fascia to first cross member, plus oil pan, differential and transfer case shields (4x4 models)	0	0	0
Sunroof - power, sliding glass panel and tilt with express-open	-	0	0
Tires - P265/70R17 all-season (1500 models)	S	S	-
Tires - LT245/75R16E all-season (Suburban 2500 2WD)	S	S	-
Tires - LT245/75R16E on-off road (Suburban 2500 4x4)	S	S	-
Tires - P275/55R20 all-season	-	-	S
Tires - white letter outlined (Tahoe models)	0	0	-
Tow hooks - two, front (4x4 models) ³	S	S	S
Wheels - 17" x 7.5" Bright aluminum, grooved 5-spoke (Tahoe and Suburban 1500 models) (A)	S	-	-
Wheels - 17" x 7.5" Bright aluminum, smooth 5-spoke (Tahoe and Suburban 1500 models) (C)	S	-	-
Wheels - 16" x 6.5" Polished forged aluminum with 8-lug design, chrome centre caps and full-size steel spare (Suburban 2500 models)	S	S	-
Wheels - 20" x 8.5" Polished aluminum with full-size aluminum spare (B)	-	0	S
Wheels - full-size 17" steel spare under rear frame, lockable (Tahoe and Suburban 1500 2WD models)	S	S	S
Wheels - full-size 17" aluminum spare under rear frame, lockable (Suburban 1500 4x4 models only)	S	S	S
Wheel and Tire Package - includes 20" x 8.5" Polished aluminum wheels and P275/55R20 all-season tires (1500 models only)	-	0	S
Windshield washer fluid system - heated	-	0	S
Windshield wipers - variable delay (intermittent), flat-blade, with wet-arm washers	S	S	S
Windshield wipers - Rainsense, moisture sensitive, flat-blade with wet-arm washers	S	-	0
Wiper/washer - rear-window with fixed delay	S	S	S

³ Standard on all 2500 models.

INTERIOR

Air conditioning - tri-zone, manual climate controls with individual settings for driver, front and rear passengers ⁴	S	S	-
Air conditioning - tri-zone, automatic climate controls with individual settings for driver, front and rear passengers ⁴	-	0	S
Cargo shade - rear (except with available third-row on Tahoe)	-	S	-
Console - centre floor, includes storage bin, dual cupholders in front and rear, 2 power outlets, rear-seat audio and HVAC controls	-	S	S
Cruise control - electronic with resume coast and decelerate/accelerate features	S	S	S
Defogger - electric, rear-window	S	S	S
Floor covering - colour-keyed carpet with 1st- and 2nd-row removable floor mats and cargo compartment mat (deleted when third row is specified on Tahoe)	S	S	-
Heater - rear, auxiliary with passenger heating ducts	S	S	S
Instrumentation - full analogue gauge cluster (includes speedometer, tachometer, odometer, trip odometer, fuel level, voltmeter, engine temperature and oil pressure)	S	-	-

DIMENSIONS mm (in.)



^{*}Including roof rack. ^{**}Excluding mirrors.

CARGO AREA DIMENSIONS mm (in.)

	TAHOE	SUBURBAN
Cargo floor height to ground	803 (31.6)	828 (32.6)
Maximum cargo height	1059 (41.7)	1052 (41.4)
Cargo floor width between wheel housings	1247 (49.1)	1247 (49.1)
Load-floor length to front seat	2068 (81.4)	2586 (101.8)
Load-floor length to 2nd-row seat	1255 (49.4)	1768 (69.6)
Load-floor length to 3rd-row seat	386 (15.2)	904 (35.6)

CARGO VOLUME L (cu. ft.)

With all seats in position	479 (16.9)	1297 (45.8)
With 3rd-row seat removed or folded	1708 (60.3)	2549 (90.0)
With 2nd-row seat folded and 3rd-row seat removed	3084 (108.9)	3891 (137.4)

WHEELS



A - 17-inch Bright Aluminum Standard on LS.

B - 20-inch Polished Aluminum* Standard on LTZ. Available on LT models.

C - 17-inch Deluxe Aluminum Standard on LT models.

^{*}Use only GM-approved wheel/tire combinations. See dealer for details.

EXTERIOR COLOURS



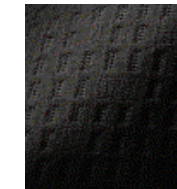
INTERIOR FABRICS



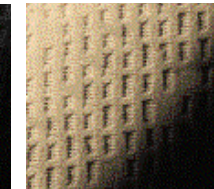
Custom Cloth 40/20/40 Split-Bench Seat
Front split-bench seat in Custom Cloth. Standard in LS. Shown in Ebony.

Custom Cloth Bucket Seat
Front bucket seat in Custom Cloth. Standard in LT. Shown in Light Titanium.

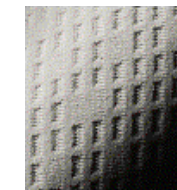
Custom Leather-appointed Bucket Seat
Custom Leather-appointed front bucket seat. Standard in LTZ, and available in LT. Shown in Light Cashmere.



19 - Ebony Custom Cloth



31 - Light Cashmere Custom Cloth



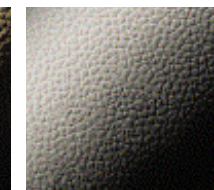
83 - Light Titanium Custom Cloth



19 - Ebony Leather



31 - Light Cashmere Leather



83 - Light Titanium Leather

EXTERIOR/INTERIOR COLOUR COMPATIBILITY

Exterior	Interior	19 - Ebony	31 - Light Cashmere
83 - Light Titanium			
16 - Graystone Metallic		•	•
25 - Dark Blue Metallic		•	•
26 - Bermuda Blue Metallic*		•	••
41 - Black		•	•
50 - Summit White		•	•
51 - Gold Mist Metallic		•	•
53 - Antique Bronze Metallic		•	•
59 - Silver Birch Metallic		•	•
63 - Sport Red Metallic		•	••

*Available at extra cost.
Due to limitations in the printing process, the colours shown may differ slightly from the actual colour.

THE GM WARRANTY:²

The New Vehicle Limited Warranty is your promise of total warranty protection. It applies to the first owner and all future owners of the vehicle, and covers repairs to correct any vehicle defect related to materials or workmanship during the warranty period.
The warranty includes:
• 3-year/60,000 km* Base warranty coverage
• 6-year/160,000 km* corrosion perforation coverage
• 8-year/130,000 km* coverage on catalytic converters and powertrain control modules (PCMs).
*Whichever comes first.

OTHER OWNERSHIP PRIVILEGES AND PROGRAMS:¹

Roadside Assistance - 24/7 service via toll-free number during the Base warranty period, anywhere in Canada or the United States
Courtesy Transportation - may be offered during the Base warranty period
GM Protection Plan (GMPP) - the only extended services contract backed by the resources and commitment of General Motors. GMPP may be purchased at the time of your sale or lease, or subsequently during the Base warranty period
GM Goodwrench Service - with GM-certified technicians and GM-approved parts, nobody knows your GM vehicle better.
¹Conditions and limitations apply.

TO HELP YOU PURCHASE OR LEASE A NEW VEHICLE:

GMAC Financing - on the spot financing at your GM dealership!¹
GMAC SMARTLEASE - a smart alternative to traditional financing!¹
GM Student Bonus Program - GM will cover the first two purchase finance or lease payments and the lease security deposit on eligible new GM vehicles for students and recent graduates of high school, college or university!¹
The GM Card - eligible cardholders may be able to redeem up to \$3500 on GM CardSM Earnings toward the total purchase price or lease down payment on selected vehicles. For more information on The GM Card please call 1-800-461-3279.¹
¹Conditions and limitations apply. ²Subject to eligibility.

INFORMATION RESOURCES:

You can find more information about these programs from your GM dealer, or at these information centres:
• The GM Website at gmcanada.com
• The GM Customer Communication Marketing Centre at 1-800-GM-DRIVE (1-800-463-7483 or 1-800-3-3830 for TDD users)
• For information about GMAC visit gmcanada.com or call 1-800-616-4622.



A WORD ABOUT THIS BROCHURE

Some of the equipment shown or described throughout this brochure may be available at extra cost. We have tried to make this brochure comprehensive and factual. We reserve the right, however, to make changes at any time, without notice, in prices, colours, materials, equipment, specifications, models and availability. Specifications, dimensions, measurements, ratings and other numbers in this brochure and other printed materials provided at the dealership or affixed to vehicles are approximates based upon design and engineering drawings and prototypes and laboratory tests. Your vehicle may differ due to variations in manufacture and equipment. Since some information may have been adapted since the time of the printing, please check with your GM dealer for complete details. General Motors of Canada Limited reserves the right to lengthen or shorten the model year for any product, for any reason, or to start and end model years at different times.

A WORD ABOUT ASSEMBLY

GM vehicles are equipped with engines and components produced and assembled by different operating units of General Motors, its subsidiaries and suppliers and these engines and components may change or be obtained from different sources from time to time. All such engines and components are approved for use in GM vehicles. Certain equipment ordered may be unavailable at the time of assembly and we suggest that you verify that your vehicle includes the equipment you ordered, or if there are changes, that they are acceptable to you.

TRADEMARKS

The marks appearing in this brochure including, but not limited to: General Motors, GM, the GM

TRADEMARKS

The marks appearing in this brochure including, but not limited to: General Motors, GM, the GM Canada emblem, the GM Canada Website address, the GM Accessories logo, Chevrolet, Chevy, the Chevrolet emblem, Suburban, Tahoe, and their respective logos, emblems, slogans and vehicle model names and body designs; and other marks such as Active Fuel Management, Autotrac, AutoRide, FlexFuel, RainSense, SMARTLEASE, Solar-Ray, StabiliTrak and Vortec are trademarks of General Motors Corporation and/or General Motors of Canada Limited, its subsidiaries, affiliates or licensors.
GMAC is a registered trademark of the General Motors Acceptance Corporation.
OnStar, the OnStar logo and the OnStar button are registered trademarks of the OnStar Corporation.
PASS-Key III+ and TheftLock are registered trademarks of Delphi Automotive Systems.
Bose and AudioPilot are registered trademarks of the Bose Corporation.
Radio Data System (RDS) is a registered trademark of the U.S. National Association of Broadcasters.
The XM name and related logos are registered trademarks of XM Satellite Radio Inc.

COPYRIGHT

THE GM COMMITMENT | SOLUTIONS FOR THE WORLD YOU DRIVE IN.

At General Motors we are 100 percent committed to building vehicles that answer your specific needs. Because you demand more of your vehicle than ever before, we're committed to putting more of what you want into every vehicle we make.

VALUE

Value means much more than simply the price you pay for a vehicle. We are particularly proud of the value you receive for your money when you choose a General Motors vehicle – the unique combination of style, performance, safety, quality and functionality that sets GM's diverse model lineup apart from the rest.

QUALITY

If you're looking for a vehicle that's built to exceptionally high standards, look no further than GM's long list of quality and dependability awards, media accolades and consumer recommendations – as well as the fact that GM builds the most dependable, longest-lasting full-size pickups on the road.*

SAFETY

General Motors is the only automotive manufacturer committed to offering a full range of cars, trucks and SUVs that provide safety protection before, during and after a collision. In addition, GM builds 26 vehicles that have earned U.S. Government five-star frontal or side crash test ratings for 2006 models.**

FUEL ECONOMY

We know how important fuel efficiency is today. GM has it covered by offering more cars that get better than 70 L/100 km in highway driving than any other automaker in Canada. In addition, GM offers 14 models with Active Fuel Management™ fuel-saving technology – and 11 models that can run on E85 ethanol fuel.

INNOVATIVE DESIGNS

It required ingenuity to bring utility and dramatic style together in the Chevrolet HHR. And it required pure creativity to execute the flawless lines and purposeful design of the Pontiac Solstice open-air roadster. At GM, we break the mould to develop new designs that give you more range of selection than ever before.

FEATURES

GM keeps you a head of the curve, by adding the features that really make a difference to your driving experience. Features like OnStar – the first comprehensive in-vehicle communications and assistance service. And XM Satellite Radio – the largest satellite radio provider in the world – that's now offered on more than 50 GM vehicles.

*Dependability based on longevity: 1991-July 2004 full-size Chevrolet and GMC light-duty pickup registrations, including chassis cabs. Sources: R.L. Polk Canada, Inc. National Vehicle Population Profile – Canadian Vehicles in Operation as of July 1, 2004. Based on % of vehicles remaining in operation, weighted on age of vehicle.
**U.S. Government ratings are part of the National Highway Traffic Safety Administration's (NHTSA's) New Car Assessment Program (safercar.gov).
™/© 2006, GM. Used under License.

CHEVROLET PONTIAC BUICK GMC CADILLAC SATURN SAAB HUMMER

gmcandada.com

