

The 2007 Honda Fit



Fit

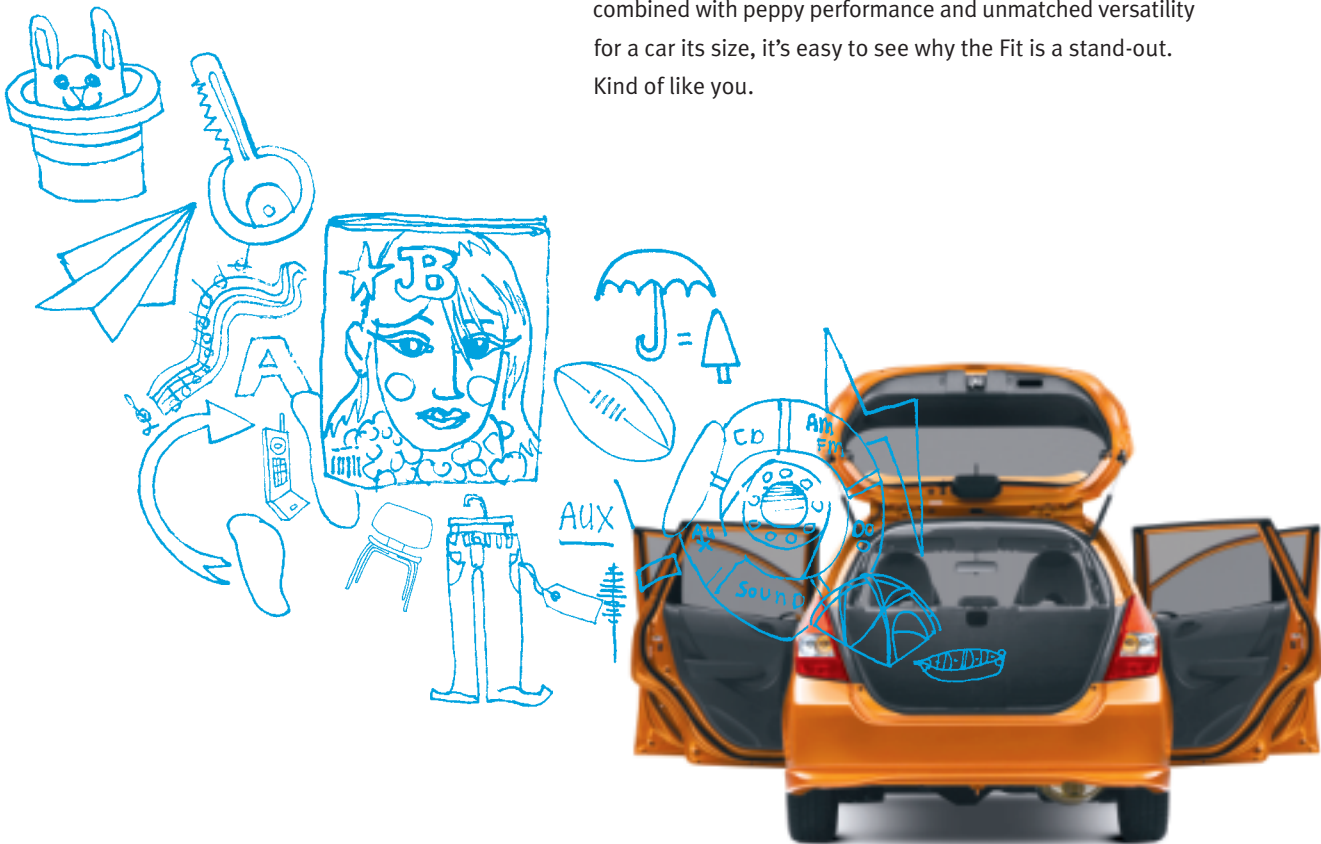


HONDA

What makes the Fit so much fun?

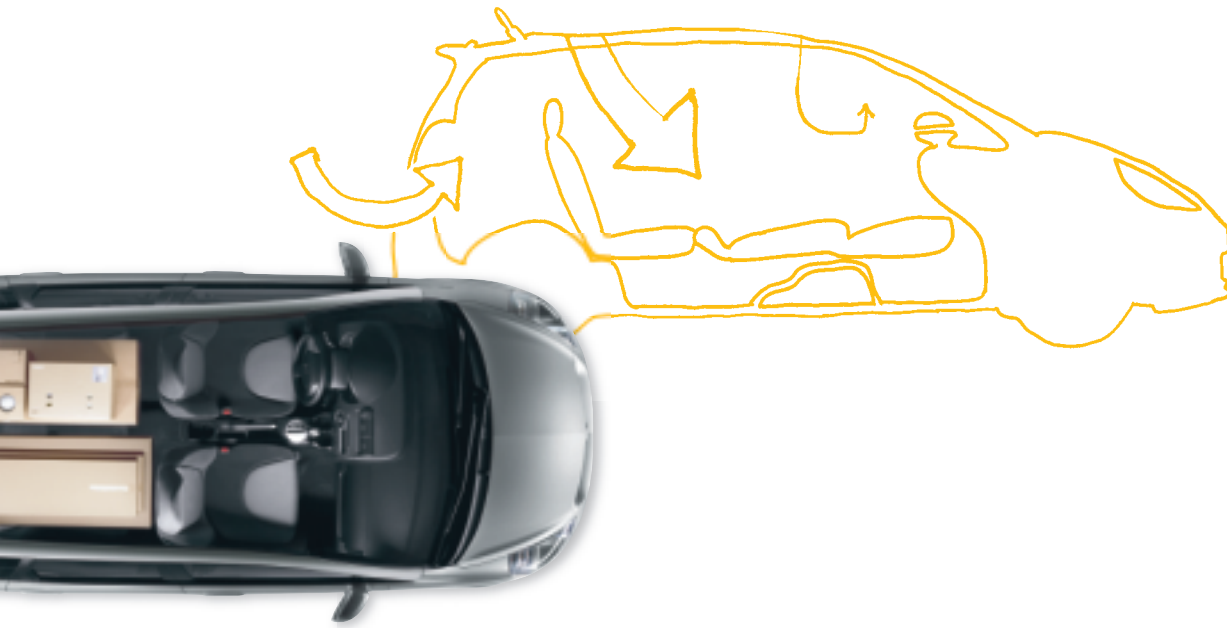
It's the things we'll explain here. And some you'll just need to experience.

Stylish. Sporty. Reliable. Safe. Versatile. Efficient. The list goes on. Fact is, the Fit was engineered with adventurous and fun-focused people in mind. If you're reading this, more than likely, you're the kind of person who follows their own path and doesn't fall into the conventional way of thinking or doing things. The Fit was built for people like you. With the comfort and quality you've come to expect from Honda, combined with peppy performance and unmatched versatility for a car its size, it's easy to see why the Fit is a stand-out. Kind of like you.





I zig when others zag. So what makes the Fit so unique?



For starters, the Fit is just more versatile. Oh, and it's a Honda.

Versatility comes in many forms, but never has it come in such a fun package. With a multitude of seating configurations and more cargo space than any car in its class, just about anything you can carry, lug, haul or hoist can fit in the Fit. After all, when you're a Fit driver, you can never be sure where life's road is going to take you. One thing you can be sure of on your journey there, however, is the peace of mind that comes with the reliability and safety built into every Honda.



Two trips to the big box store become one.



A surfboard? A snowboard? You'll never be bored.



One + Four = Fun.



Room for the band.



A trip to the nursery.



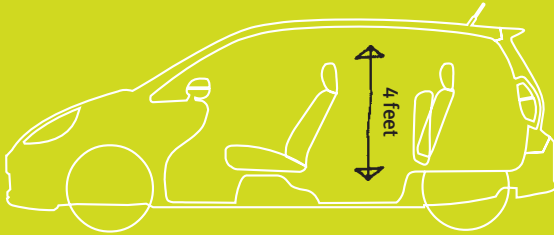
Your best friend.



The Honda Fit has room for you and four friends, plus all their stuff, with 21 cubic feet of cargo space. But the versatility of the Fit really becomes evident with the dive-down capability of the 60/40 split rear Magic Seat.[®] It allows the seatbacks to fold completely flat or the seat bottoms to fold up – all with just one hand – providing you with four distinct seating and cargo-carrying configurations.

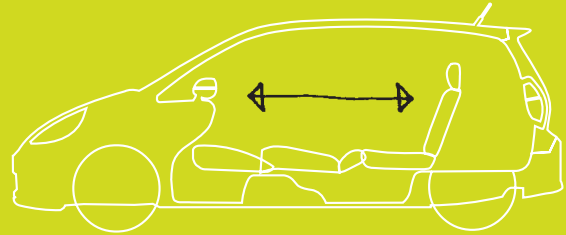


Tall Mode



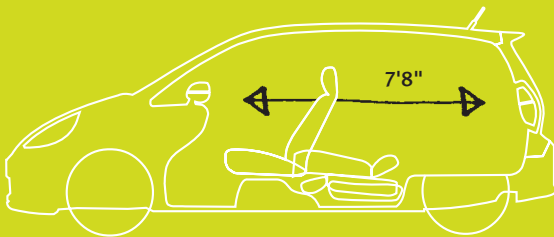
Seats that flip down are a great option, for sure. But with the Fit, you have two options: The second row of seats in the Honda Fit not only fold down, they also flip up, creating more vertical room, giving over 4 feet of floor-to-ceiling space for those really tall items.

Refresh Mode



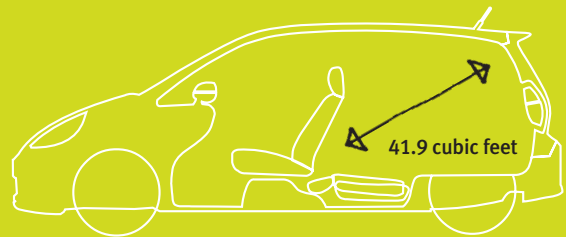
When a car is this fun to drive, it's easy to find yourself on the road for hours. Not a problem with the Honda Fit. Your next stop truly becomes a rest stop with front seats that fold flat, allowing you to recline all the way from the second row to the front seat.

Long Mode

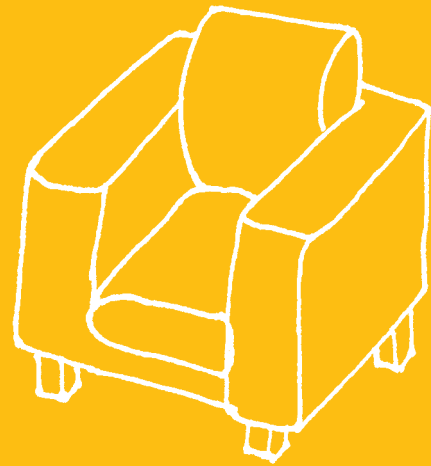


Surfboards, curtain rods, stepladders, tent poles, patio umbrellas, hockey sticks, snowboards, and other really long stuff: the Honda Fit swallows them all up. With a front passenger seat and a 60/40 split rear seat that both fold completely flat, you can transport objects up to 7'8" long.

Utility Mode



Need more rear cargo space? Not a problem with the Honda Fit. Simply lay the rear seats down to their folded-flat position and you have all the room you need to carry the big, bulky stuff – 41.9 cubic feet of stuff to be precise.



So why do my friends want to spend more time in my Fit than in my apartment?

Simple. The Honda Fit is just more fun: It has a better view, a better stereo, and it takes you to a lot more interesting places.

You and your four friends will feel right at home in the Honda Fit. Maybe it has something to do with the fact that the Fit Sport has a stereo that rivals most home systems. A 200 watt, 6-speaker AM/FM/CD stereo system with WMA/MP3 playback capability, as well as a standard auxiliary input jack – all packing an audio punch that will leave your driving neighbours wanting to join the fun.



It's the intuitive, user-friendly instrument cluster and control panel. It's the standard front/rear beverage holders and power windows. It's simply a long list of well thought out features that just makes life so much better.



Great gas mileage and zippy performance.

PADDLE SHIFT



**Also known as
“Fantastic Power-
to-Weight Ratio”.**

The Honda Fit achieves its enviable power-to-weight ratio through its 1.5-litre, SOHC, 16-valve, 4-cylinder VTEC® engine that generates 109 horsepower. And at the heart of the Fit powerplant is Honda’s renowned Variable Valve Timing and Lift Electronic Control (VTEC®) system. It provides highly efficient operation at low speeds and extended performance at high engine speeds, which benefits fuel efficiency, power and low emissions. A 5-speed manual transmission comes standard, with an optional 5-speed automatic transmission. Sport models, with automatic transmissions, come with steering wheel-mounted paddle shift controls, which give you the freedom of automatic driving if you choose, or the ultimate in gear shifting control right at your fingertips.



Of course, all this power and performance doesn't mean so much without control and handling behind it. The Honda Fit has a suspension that is a combination of a front MacPherson strut/rear torsion beam with trailing arm, designed for sharp, nimble handling. A standard Electric Power Steering (EPS) system provides for quick turns, as well as increased fuel efficiency. A standard Drive-by-Wire Throttle System™ provides quick throttle response, smooth automatic transmission shifts and precise fuel delivery to the engine. Let's recap: Handling, control, performance, fun, efficiency. Are you pinching yourself yet?

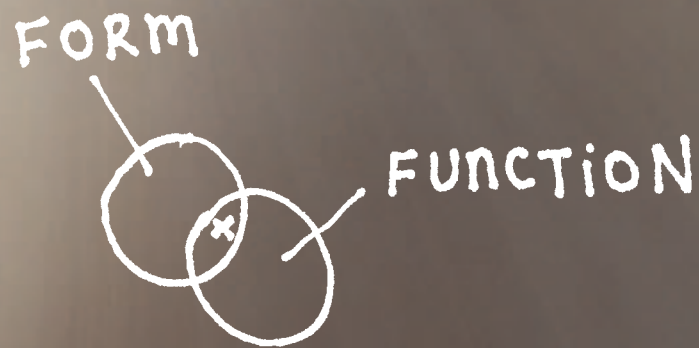


**Form? Function?
Which do you
choose?**



**With the Honda Fit,
you have both.**

You've been reading about how versatile the Honda Fit is. Adding to its multi-dimensional appeal are its 5 doors – passengers can step in and out with ease. And the hatchback lifts up and out of the way to allow unrestricted access to all that cargo space. Form follows function with standard body-coloured headlight surrounds, door mirrors and handles. Its compact design isn't just easy on the eyes, either. It also makes the Honda Fit very manoeuvrable and easy to park. And Sport models come with body-coloured underbody spoilers and rear roofline spoiler, fog lights and 15-inch aluminum-alloy wheels, to give you that “hunker-down-take-charge-of-the-road” kind of feel.



SIDE
CURTAIN
AIRBAGS

OPDS

ANTI-LOCK
BRAKING SYSTEM

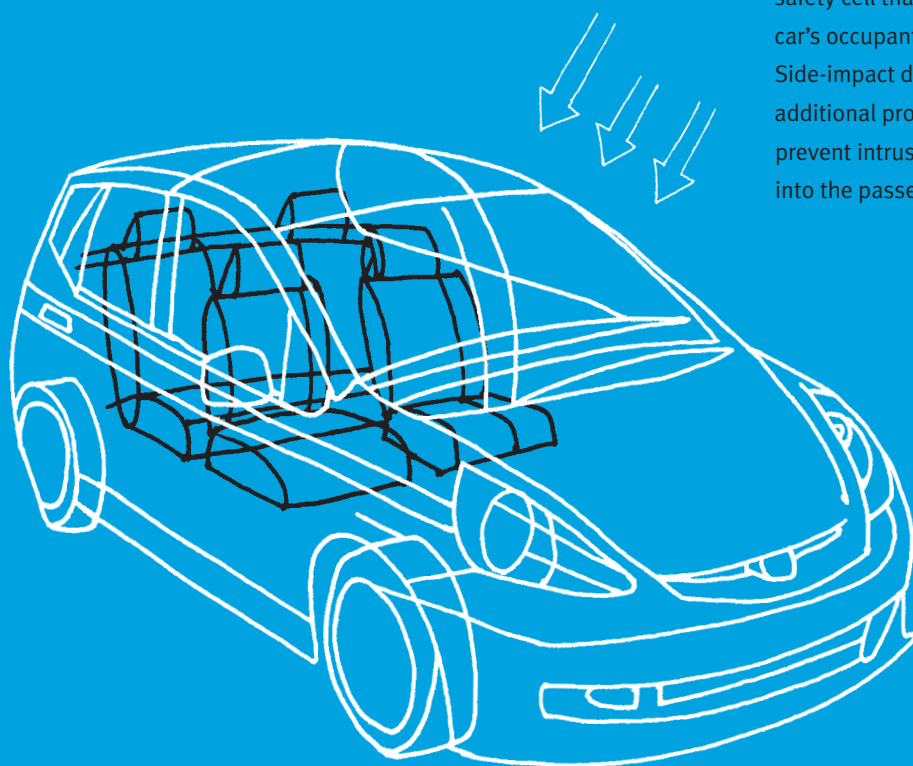
How can so many standard safety features fit into the Fit?

**It's because
Honda believes
in Safety for
Everyone.**

Safety for Everyone. Honda has a long commitment to safety. It's why Honda is a world leader in automotive safety research and development. The idea that safety is for everyone is a company philosophy, not a slogan. Honda seeks to provide the highest level of occupant safety in all of their cars and trucks – regardless of size or price – as well as improving safety for pedestrians. This approach is making a difference as 10 of Honda's 2006 models have earned the U.S. National Highway Traffic Safety Administration's (NHTSA) 5-star frontal impact crash-test rating – the most of any brand tested.



Safety For Everyone means that class-leading safety features come standard in the Honda Fit. For example, there are the dual-stage, dual-threshold front airbags, dual front side airbags with passenger side Occupant Position Detection System (OPDS™) and side-curtain airbags. The OPDS helps prevent the front passenger's airbag from deploying if a child or small-statured person is in the airbag's path of deployment. It's Safety for Everyone – big and small.



The Fit is designed with a rigid safety cell that helps protect the car's occupants in an impact. Side-impact door beams provide additional protection by helping prevent intrusion of crash forces into the passenger space.



Stop signs. Stop lights. A sudden, unexpected moment. They all set a series of safety features in motion, seamlessly, on the Honda Fit. The Anti-Lock Braking System (ABS) allows you to stop in the shortest distance possible, while maintaining control. The Electronic Brake Distribution (EBD) applies braking power to the tires with the most traction, increasing control in varying road conditions. And the three-point seat belts at all seating positions – standard with the Fit – stand at the ready. It's a confident reassurance for driver, passenger and even pedestrians.

The Power of Dreams.

On a September day in 1946, Soichiro Honda visited the home of a friend where he came across a small generator engine designed for a wireless radio. In a moment of inspiration, he turned to his friend and said, “Let’s use this to power a bicycle.”



Say “hello” to ASIMO, the world’s most advanced humanoid robot.



Honda’s advanced crash-test facility in Tochigi, Japan.



The ultimate in clean performance.



Racing helps us prove our innovations.



The jet, reinvented.

From this engine-powered bicycle, Honda has grown into a company that moves people in every conceivable way: motorcycles, automobiles, trucks, marine engines, hybrid vehicles, a jet, a fuel cell car and even a robot that will walk and run to assist those who can’t. And each innovation begins with the same dream Mr. Honda had when he found that engine: the dream of bringing the joy of mobility to people.

Honda never stops dreaming. We dreamed of “Safety for Everyone” because everyone has the right to safety, no matter how much they pay for their vehicle. The result: 10 of Honda’s 2006 models are awarded the U.S. National Highway Traffic Safety Administration’s (NHTSA) 5-star frontal impact crash-test rating, the most of any brand tested.

Honda also has a dream of creating products that have little or no impact on the environment. Today, we have a complete line of vehicles that are more fuel efficient and environmentally friendly than ever before. Taking this dream even further will be the introduction of the FCX, a fuel cell car that will soon be available.

As long as people have places to go, Honda will invent new ways to get them there. And while today Honda makes some of the most powerful engines in the world, we will always think of Mr. Honda’s first motorized bicycle, and remember the greatest power is the power of a dream.

Engine	DX	LX	Sport
Type: 1.5-litre, in-line 4-cylinder	•	•	•
Displacement (cc)	1497	1497	1497
Horsepower @ rpm (SAE net rev 8/04) °	109 @ 5800	109 @ 5800	109 @ 5800
Torque (lbs-ft @ rpm) °	105 @ 4800	105 @ 4800	105 @ 4800
Compression ratio	10.4:1	10.4:1	10.4:1
Valvetrain: SOHC	16-valve with VTEC®	16-valve with VTEC®	16-valve with VTEC®
Fuel system: Multi-Point Programmed Fuel Injection (PGM-FI®)	•	•	•
Ignition system: direct electronic	•	•	•

°Horsepower and torque calculations reflect new SAE J1349 procedures, revised August 2004.

Drivetrain

Type: front-wheel drive	•	•	•
Manual transmission: 5-speed	•	•	•
Automatic transmission: electronically controlled 5-speed	optional	optional	
Automatic transmission: electronically controlled 5-speed with steering wheel-mounted paddle shift			optional

Body / Suspension / Chassis

Body type: unibody	•	•	•
Front suspension: MacPherson struts	•	•	•
Rear suspension: torsion beam	•	•	•
Steering type: rack and pinion with electric power assist	•	•	•
Brakes: power-assisted (front ventilated disc / rear drum)	•	•	•
Wheels: 14" steel with covers	•	•	
Wheels: 15" alloy			•
Tires: all-season radials	P175/65 R14	P175/65 R14	195/55 R15

Exterior / Interior Dimensions

Wheelbase (mm)	2450	2450	2450
Length (mm)	3999	3999	3999
Width (mm)	1682	1682	1682
Height (mm)	1524	1524	1524
Track (mm) – front / rear	1456 / 1451	1456 / 1451	1456 / 1451
Curb weight (kg) – M.T. / A.T.	1091 / 1128	1108 / 1143	1124 / 1162
Front / rear dimensions (mm)			
– headroom	1031 / 979	1031 / 979	1031 / 979
– legroom	1064 / 856	1064 / 856	1064 / 856
– hiproom	1300 / 1296	1300 / 1296	1300 / 1296
Cargo volume, (cu. ft./L)			
– rear seats up	21.3 / 603	21.3 / 603	21.3 / 603
– rear seats down	41.9 / 1186	41.9 / 1186	41.9 / 1186
Passenger volume (L)	2550	2550	2550
Fuel capacity (L)	41	41	41
Fuel consumption,* city / highway (L/100 km)			
– M.T.	7.3 / 5.8	7.3 / 5.8	7.3 / 5.8
– A.T.	7.8 / 5.6	7.8 / 5.6	8.0 / 5.8

*Fuel consumption (regular unleaded) for comparison purposes only. See Dealer for latest 2006 EnerGuide published by NRCAN (when available).

Exterior Features

Body-coloured door handles	•	•	•
Body-coloured door mirrors	•	•	•
Body-coloured rear roofline spoiler			•
Body-coloured underbody spoilers			•
Front fog lights			•

Exterior Features	DX	LX	Sport
Front intermittent wipers	•	•	•
Front splash guards	•	•	•
High mount rear brake light	•	•	•
Multi-reflector halogen headlights with body-coloured bezels	•	•	•
Rear window defroster with timer	•	•	•
Rear wiper / washer	•	•	•
Roof-mounted antenna	•	•	•

Interior Features

60/40 Split 2nd-row Magic Seat®	•	•	•
160 watt AM/FM/CD	2 speakers	4 speakers	
200 watt AM/FM/CD with WMA/MP3-Compatible Audio			6 speakers
Accessory socket	•	•	•
Air conditioning		•	•
Auxiliary input jack	•	•	•
Beverage holders, front (2) and rear (3)	•	•	•
Cargo area light	•	•	•
Cargo area storage pockets	•	•	•
Cargo area tie downs (4)	•	•	•
Cruise control			•
Driver's front vanity mirror	•	•	•
Fold-flat-capable seating	•	•	•
Keyless remote entry	accessory	accessory	•
Leather-wrapped steering wheel			•
Maintenance Minder	•	•	•
Power door locks		•	•
Power mirrors		•	•
Power windows with driver's one-touch down	•	•	•
Rear headrests (3)	•	•	•
Steering column: tilt	•	•	•
Tachometer	•	•	•

Safety

3-point seat belts in all seating positions	•	•	•
4-wheel Anti-Lock Braking System (ABS) with Electronic Brake Distribution (EBD)	•	•	•
Driver and front passenger dual-stage, dual-threshold front airbags (SRS)	•	•	•
Driver and front passenger side airbags (SRS) with passenger seat Occupant Position Detection System™ (OPDS™)	•	•	•
ECU immobilizer system	•	•	•
Front seat belt pretensioners	•	•	•
Front seat belt adjustable shoulder anchor	•	•	•
Security alarm system	accessory	accessory	•
Side curtain airbags	•	•	•

Trim Levels & Colours

Fit DX

109-hp, 1.5-litre, SOHC, 4-cylinder VTEC® engine • 4-wheel Anti-Lock Braking System (ABS) with Electronic Brake Distribution (EBD) • 5-speed manual transmission (available 5-speed automatic) • 14-inch steel wheels with covers • 60 /40 split 2nd-row Magic Seat® • 160 watt AM/FM/CD audio system with 2 speakers • Accessory socket • Auxiliary input jack • Body-coloured door mirrors and door handles • Cargo area light • Cargo area storage pockets • Cargo area tie downs • Driver's side vanity mirror • Electric power steering • Front and rear beverage holders • Front intermittent wipers • Front, side and side curtain airbags • Maintenance Minder • Multi-reflector halogen headlights with body-coloured bezels • Power windows with driver's side one-touch down and illuminated switch • Passenger seatback pocket • Rear window defroster with timer • Rear wiper/washer • Theft immobilizer system • Tilt steering column

Fit LX

Adds to or replaces DX features:

160 watt AM/FM/CD audio system with 4 speakers • Air conditioning • Power door locks with remote driver's side switch • Power door mirrors

Fit Sport

Adds to or replaces LX features:

15-inch Alloy Wheels • 200 watt AM/FM/CD audio system with 6 speakers and WMA/MP3-compatible audio • Available 5-speed automatic transmission with steering wheel-mounted paddle shift • Body-coloured rear roofline spoiler • Body-coloured underbody spoilers • Cruise control • Front fog lights • Keyless remote entry • Leather-wrapped steering wheel • Security alarm system

Accessories

16-inch Alloy Wheels • All Weather Floor Mats • Rear Tailgate Spoiler • Sport Muffler • Sport Front Grille • Interior Door Panel Trim • Rear Splash Guards • Fog Lights • Cargo Organizer • Cargo Net • Security System

VIVID BLUE PEARL

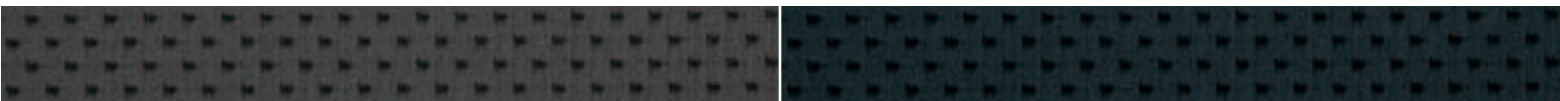
ALABASTER SILVER METALLIC

MILANO RED

NIGHTHAWK BLACK PEARL

STORM SILVER METALLIC

BLAZE ORANGE METALLIC



GREY FABRIC

BLACK FABRIC

Exterior/Interior Colours	DX	LX	Sport
Vivid Blue Pearl	Grey Fabric	Grey Fabric	Black Fabric
Alabaster Silver Metallic	Grey Fabric	Grey Fabric	Black Fabric
Milano Red	Grey Fabric	Grey Fabric	Black Fabric
Nighthawk Black Pearl		Grey Fabric	Black Fabric
Storm Silver Metallic		Grey Fabric	Black Fabric
Blaze Orange Metallic			Black Fabric

Specifications, features, illustrations and equipment shown in this catalogue are based on the latest available information at the time of publication. Although descriptions are believed to be correct, accuracy cannot be guaranteed. Honda Canada Inc. reserves the right to make changes at any time, without notice or obligation, in colours, specifications, accessories, materials and models. Some vehicles are shown with optional equipment.



At Honda, assistance and support are always available. The team of trained technicians at your Honda dealership will keep your vehicle in terrific shape. Honda accessories installed at the time your vehicle is purchased are covered under the 3-year/60,000-km limited warranty. If you need more information or assistance, call us at 1-888-9-HONDA-9. For all of the latest Honda information, including product specifications, pricing, photos and more, visit [Honda.ca](http://www.honda.ca). It has everything you need to “design” your Honda and personalize it with items from a list of quality accessories.

We're Here

Quality Honda Accessories give you the opportunity to fine-tune your new Fit just how you like it. Whether you want to turn up the style, the versatility or the exclusivity, every accessory is designed and built to adhere to the strictest Honda standards. See your dealer for full details.

Genuine Honda Replacement Parts are made to the same exacting standards as original Honda components and are guaranteed by the Genuine Honda Parts Warranty.

Honda Canada Finance Inc. Whether you buy or lease a Honda, Honda Canada Finance Inc. can assist you with the process. Ask your dealer which lease or purchase plan best suits your needs.

We're ready to help. When you purchase a new Honda, you automatically receive Honda Plus Roadside Assistance. This service is available to you or anyone else driving your vehicle 24 hours a day, 7 days a week, anywhere in Canada or the U.S. Coverage is for 3 years, unlimited distance and includes towing, battery boost, lock-out assistance plus many other helpful services. Ask your dealer for more information.



HONDA

Get the latest photos, MSRPs, features, specs and more at www.honda.ca

© 2006 Honda Canada Inc., 715 Milner Avenue, Toronto, Ontario, Canada M1B 2K8

Specifications, features, illustrations and equipment shown in this catalogue are based on the latest available information at the time of publication. Although descriptions are believed to be correct, accuracy cannot be guaranteed. Honda Canada Inc. reserves the right to make changes at any time, without notice or obligation, in colours, specifications, accessories, materials and models. Some vehicles are shown with optional equipment. Windows Media is a registered trademark of Microsoft® Corporation. Fit, Magic Seat, VTEC, Drive-by-Wire Throttle System, PGM-FI and OPDS are trademarks of Honda Motor Co. Ltd.