



2007 VERACRUZ

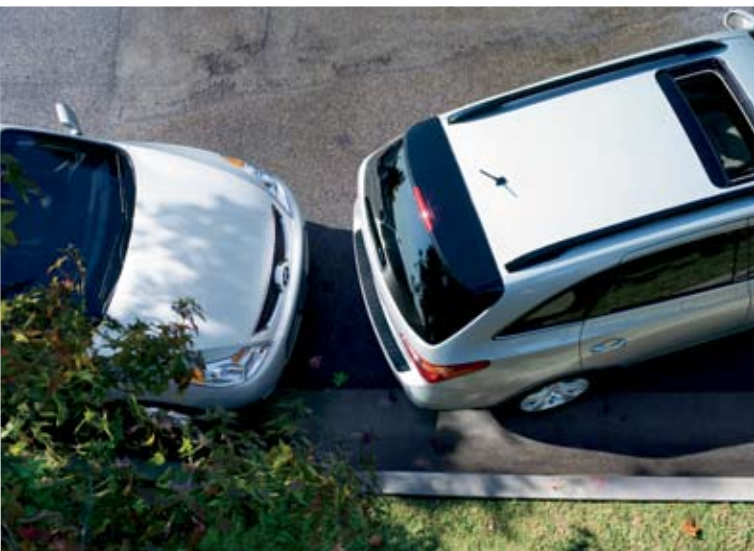


SPECIFICATIONS



TECHNICAL SPECIFICATIONS

| | | | |
|-------------------|---|---|--|
| Engine type: | 3.8L, DOHC, V6 Engine with Continuously Variable Valve Timing (CVVT) | | |
| Transmission: | 6-speed Automatic with SHIFTRONIC™ | | |
| Steering: | Power-Assisted Rack-and-Pinion Steering | | |
| Horsepower @ RPM: | 260 @ 6,000 (est.) | | |
| Brakes: | 4-wheel Disc, Anti-Lock Braking System (ABS) with Electronic Brake Force Distribution (EBD) | | |
| Suspension: | Front: | MacPherson struts, coil springs, stabilizer bar | |
| | Rear: | Multi-link with stabilizer bar | |
| Wheels and tires: | 18-inch Alloy, P245/60R18 Michelins® | | |



DIMENSIONS

| | | | | |
|---------------|-------------------------------------|---------------------|---------------------|---------------------|
| Exterior (mm) | Overall length | 4,840 | | |
| | Overall width (excluding mirrors) | 1,945 | | |
| | Overall height (includes roof rack) | 1,807 | | |
| | Wheelbase | 2,805 | | |
| Interior (mm) | | 1 st row | 2 nd row | 3 rd row |
| | Leg room | 1,082 | 976 | 800 |
| | Head room | 994 | 982 | 918 |
| | Shoulder room | 1,539 | 1,529 | 1,426 |
| | Hip room | 1,460 | 1,458 | 1,158 |

FUEL ECONOMY (L/100km)

| | | |
|------------------------|------|---------|
| | City | Highway |
| Automatic Transmission | 13.9 | 9.0 |

TOWING CAPACITY (kg)

1,588

MODEL FEATURES



| | GLS | Limited | | GLS | Limited |
|--|-----|---------|---|--|---------|
| 110 V Inverter | | | • | Ignition Immobilization System | • • |
| 7-passenger Seating | • | • | • | Illuminated Window Switches | • • |
| Airbags ¹ (six): Dual Advanced Driver and Front Passenger, Front Seat-mounted Side-impact, Roof-mounted Side-curtain (all three rows) | • | • | • | Leather Seats (Premium*) | • •* |
| Air Quality System | • | • | • | Leather-wrapped Steering Wheel and Gear Shift Knob | • • |
| AM/FM/XM/CD/MP3 Audio System with six Speakers | • | • | • | Memory System for Power Tilt, Telescoping Steering, Exterior Mirror and Seat Position | • |
| Automatic Light Control Headlights | • | • | • | Mirror-mounted Puddle Lights | • • |
| Centre Rear Console Video Jack | • | • | • | Non-CFC Air Conditioning System with Dual Zone Climate Control and 2nd and 3rd Row Ventilation Ducts | • • |
| Chrome Exterior Handles | • | • | • | On Demand All-wheel Drive | • • |
| Conversation Mirror | • | • | • | Proximity Key | • |
| Cooled Centre Console Armrest Storage | • | • | • | Power Activated, Heated with Timer, Manual Folding Exterior Mirrors | • • |
| Cruise Control | • | • | • | Power-Adjustable Pedals | • |
| Deluxe Illuminated Door Scuff | | • | • | Power Door Locks | • • |
| Driver's and Front Passenger's Illuminated Vanity Mirror with Extension | • | • | • | Power Rear Tailgate | • |
| Electro-chromic Exterior Mirrors | | • | • | Power Tilt-and-Slide Glass Sunroof with One Touch Open | • • |
| Electro-chromic Auto-dimming Rearview Mirror with Compass | • | • | • | Power Windows with Driver's Automatic Up/down | • • |
| Electronic Stability Control (ESC) ² with Traction Control System (TCS) | • | • | • | Rain-sensing Windshield Wipers | • • |
| Energy-absorbing Steering Column | • | • | • | Rear Combination LED Lamp | • |
| Fog Lights | • | • | • | Rear Parking Assist | • • |
| Front Seats: Multi-adjustable Captain's Chairs with Active Head Restraints | • | • | • | Rear Seat Entertainment System (RSE) (8" LCD) | • |
| 8-way Power Driver's Seat with Power Adjustable Lumbar Support | • | • | • | Rear Window Intermittent Wiper | • • |
| Front Passenger Power Adjustable Seat | • | • | • | Rear Window Defroster with Timer | • • |
| 2nd Row: 60/40 Split-folding Seats with Adjustable Head Restraints | • | • | • | Rear Spoiler | • • |
| 3rd Row: 50/50 Split-folding Seats with Adjustable Head Restraints | • | • | • | Remote Keyless Entry with Alarm | • • |
| Front and Rear Crumple Zones | • | • | • | Roof-mounted Micro Antenna | • • |
| Front and Rear Mud Guards | • | • | • | Roof Rack | • • |
| Front Windshield Wiper De-icer | • | • | • | Self-leveling Suspension | • |
| Heated Seats | • | • | • | Solar Control Glass | • • |
| Homelink™ Integrated Transceiver | • | • | • | Steering Wheel-mounted Audio Remote Control | • • |
| Infinity™ AM/FM/XM/6-Disc I/D CDC/MP3 Audio System with 10 Speakers and 605W Maximum Output External Amplifier | • | • | • | Tilt and Telescoping Steering Wheel (Power*) | • •* |
| | | | | Trip Computer | • • |
| | | | | Woodgrain Interior Accents | • • |

¹ The Supplemental Restraint (Airbag) System (SRS) is designed to work with the 3-point seatbelt system. The SRS deploys in certain front end impact conditions where significant injury is likely. The SRS is not a substitute for seatbelts, which must still be worn at all times. Children under the age of 13 should be securely restrained in the rear seat. NEVER place a rear-facing child seat in the front seat of a vehicle.

² Electronic Stability Control (ESC) and Traction Control System (TCS) are meant to enhance conscientious driving habits and are not a substitute for safe driving practices.

All information is accurate at time of printing. Hyundai Auto Canada Corp. reserves the right to change or modify equipment or specifications at any time without prior notice. Model not exactly as shown. The Hyundai names, logos, product names, feature names, images and slogans are trade marks owned by Hyundai Auto Canada Corp.