



JEEP® GRAND CHEROKEE | 2007



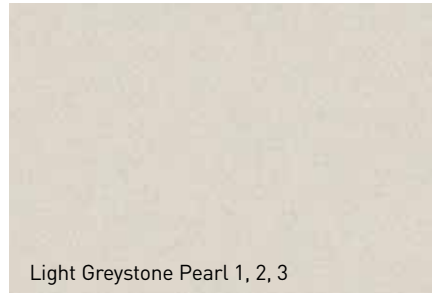


COLOUR & TRIM

JEEP® GRAND CHEROKEE → PAGE 18-19 | JEEP.CA



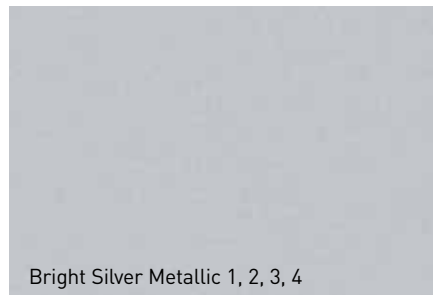
Black 1, 2, 3, 4



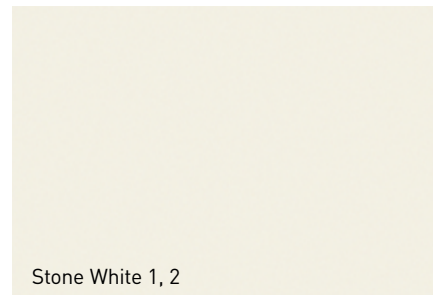
Light Greystone Pearl 1, 2, 3



Mineral Grey Metallic 1, 2



Bright Silver Metallic 1, 2, 3, 4



Stone White 1, 2



Jeep® Green Metallic 1, 2, 3



Steel Blue Metallic 1, 2, 3, 4

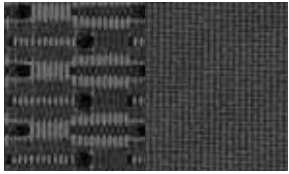


Red Rock Crystal Pearl 1, 2, 3, 4

LEGEND: 1 Laredo; 2 Limited; 3 Overland; 4 SRT8

NOTE: Due to occasional printing irregularities, the colours shown may vary slightly from actual hues.

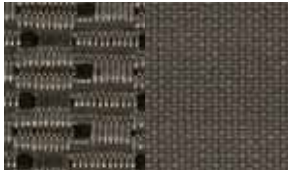
LAREDO



Cloth
Medium Slate Grey
Standard



Leather
Medium Slate Grey
Available



Cloth
Medium Khaki | Standard

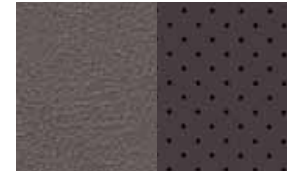


Leather
Medium Khaki | Available

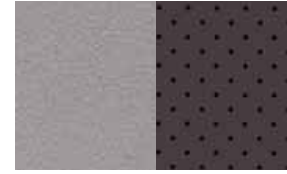
LIMITED



Leather
w/Perforated Inserts
Two-Tone Slate Grey
Standard



Leather
w/Perforated Inserts
Two-Tone Khaki | Standard

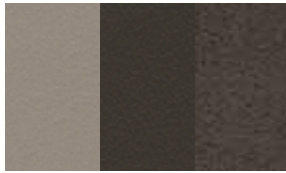


Leather w/Perforated Inserts
Two-Tone Light Greystone/Dark Khaki | Standard

OVERLAND



Leather
w/Preferred Suede™
Microfibre Inserts
Two-Tone Slate Grey
Standard



Leather
w/Preferred Suede
Microfibre Inserts
Two-Tone Light Greystone/
Dark Khaki | Standard



SRT8



Leather w/Diamond Embossed
Preferred Suede Microfibre Inserts
Medium Slate Grey/Dark Slate Grey | Standard



LAREDO



17-inch Cast Aluminum
with Satin Silver Finish | Standard

LIMITED



17-inch Cast Aluminum
with Machined Face | Standard



17-inch Chrome-Clad
Cast Aluminum | Available
(also available on Laredo)

OVERLAND



17-inch Chrome-Clad
Cast Aluminum | Standard

SRT8



20-inch Polished
Forged Aluminum | Standard



POWERTRAIN

Engine Displacement (cu. in.)	3.0L V6 CRD	3.7L V6	4.7L V8	5.7L HEMI® V8	6.1L SRT HEMI V8
	183	226	287	345	370
Net Power					
kW (hp) @ rpm	160 (215) @ 3800	157 (210) @ 5200	175 (235) @ 4500	246 (330) @ 5000	313 (420) @ 6200
Net Torque					
N-m (lb ft) @ rpm	510 (376) @ 1600-2800	318 (235) @ 4000	414 (305) @ 3600	508 (375) @ 4000	569 (420) @ 4800
Axle Ratio	3.73:1	3.07:1	3.73:1	3.73:1	3.73:1
Fuel System	Common-Rail Direct Injection	Sequential multipoint electronic fuel injection			

Multi-Displacement System (MDS) Deactivates 4 cylinders (1, 4, 6, and 7) during steady speed between 64-97 km/h (40-60 mph), low-acceleration and shallow-grade climbing conditions to improve fuel economy (depending on driving habits)⁽¹⁾ (5.7L HEMI V8)

Transmission 5-speed automatic with Electronic Range Select, Tow/Haul feature, adaptive electronic control, Brake/Park Interlock and electronically modulated converter clutch (3.7L, 6.1L)

Multispeed automatic with 5 forward speeds, alternate 2nd gear, Electronic Range Select, Tow/Haul feature, Brake/Park Interlock and electronically modulated converter clutch (4.7L, 5.7L)

FOUR-WHEEL-DRIVE SYSTEM (transfer case)

Quadra-Trac I® NV140⁽²⁾ Full-time; single-speed with 48/52 front/rear torque split and open front, centre, and rear differentials (3.7L) Std.

Quadra-Trac II™ NV245 Active full-time; 2-speed with low range [2.72:1] and Neutral, variable with 48/52 front/rear default torque split, electronically controlled clutch pack coupling in centre differential and open front/rear differentials (3.0L, 3.7L, 4.7L) Opt.

Quadra-Drive II™ NV245 Active full-time; 2-speed with low range [2.72:1] and Neutral, variable with 48/52 front/rear default torque split, electronically controlled clutch pack coupling in centre differential and front and rear Electronic Limited-Slip Differentials (3.0L, 4.7L, 5.7L) Opt.

SRT NV146 Active full-time; single-speed with variable torque split, electronically controlled clutch pack in centre differential and open front and rear differentials (6.1L) Opt.

CAPACITIES/WEIGHTS kg (pounds) unless otherwise specified

Fuel Tank - L (imp. gal.) (gasoline)	80 (17.5)
(diesel)	83 (18.3)
Base Curb Weight	2036 (4488)
Payload Capacity (with all occupants and cargo)	476 (1050)
Gross Vehicle Weight Rating	
3.0L V6 CRD	2790 (6150)
3.7L V6	2676 (5900)
4.7L FFV V8	2767 (6100)
5.7L HEMI V8	2790 (6150)
6.1L SRT HEMI V8	2790 (6150)

TOWING DATA kg (pounds)

Gross Trailer Weight Rating	
3.0L V6 CRD	3266 (7200)
3.7L V6	1588 (3500)
4.7L V8	2948 (6500) ⁽³⁾
5.7L HEMI V8	3266 (7200)
6.1L SRT HEMI V8	1588 (3500)
Tongue Load Limit (3.7L, 6.1L/3.0L, 4.7L, 5.7L)	238 (525)/342 (750)

Trailer Tow Group Includes frame mounted hitch receiver and 4-pin adapter (3.7L); includes frame mounted receiver hitch and wiring harness with 7- to 4-pin adapter (4.7L, 5.7L) Opt.

RESTRICTION: Trailer frontal area limitation of 5.9 m² (64 sq. ft.); maximum trailer length of 7.6 m (25 ft) [Class II] or 9.1 m (30 ft) [Class IV]; trailer sway control and low-profile mirrors are recommended. This chart is meant to serve as a quick and easy reference guide on how to properly equip your Jeep® Grand Cherokee for towing. For specific details, discuss your plans with your Jeep retailer, who will help you select the right equipment to meet your specifications.

ABOUT THIS CATALOGUE: Since the time of printing, some of this information may have been updated. Ask your retailer for details before ordering. Specifications, descriptions and illustrations contained in this catalogue are based on information believed to be correct at the time this publication was approved for printing. However, accuracy cannot be guaranteed. DaimlerChrysler reserves the right to discontinue models or options at any time or change specifications and materials, equipment or design without notice and without incurring obligation. Some of the equipment may not be exactly as shown in this catalogue.

Some of the equipment, described or illustrated in this catalogue may not be standard, and may be available only at extra cost, as factory installed or retailer installed; items described as "available" may be standard on some models and optional, or not available, on others. Equipment referred to as "available" or "optional" may be at extra cost. Some options are required in combination with other options. For the price of the model with the equipment you desire or verification of specifications and equipment availability described herein, see your Chrysler, Jeep®, Dodge retailer.

Colour availability may vary by model. Due to printing limitations, the colours shown here and throughout the catalogue may vary slightly from the actual hue. See your retailer to view accurate colour chips. Jeep is a registered trademark of DaimlerChrysler Corporation, used under licence by DaimlerChrysler Canada Inc.

©2006 DaimlerChrysler Canada Inc. All rights reserved.

2007 Chrysler, Jeep®, and Dodge vehicles are backed by a 5-year or 100,000-kilometre* fully transferable Powertrain Warranty with \$0 deductible, plus 24-hour roadside assistance.* Basic Warranty coverage is for 3 years or 60,000 kilometres.* Rust-through coverage on all body sheet metal is for 3 years. The Cummins® Turbo Diesel engine is protected by a separate Limited Warranty, covering the engine for 5 years or 160,000 kilometres*.

*Whichever comes first. *Some conditions may apply. The 5/100 Warranty does not apply to vehicles sold for certain commercial uses or to SRT including Viper models. See your retailer for details.

BODY/SUSPENSION/CHASSIS

Body Design UniFrame construction: All steel body sheet metal and frame structural members welded and bonded into a single unit Std.

Suspension

Front: Short/Long Arm (SLA) independent design with coil springs, gas-charged, twin-tube coil-over shock absorbers, upper and lower control arms ("A" arms) and stabilizer bar
Rear: Solid (live) axle, 5-link with tubular track bar, twin-tube coil-over shock absorbers and stabilizer bar

Steering	Rack and pinion, power assisted
Variable Ratio	15.8:1, 13.9:1
SRT8	16.5:1, 14.6:1
Turns (lock-to-lock)	2.85
Turning Diameter - m (ft), curb-to-curb	11.2 (36.7)
SRT8	11.3 (37.1)

BRAKE SYSTEM

Front: Power assisted disc brakes; 12.9" rotor diameter (SRT8 14.2)

Rear: Power assisted disc brakes; 12.6" rotor diameter (SRT8 13.8)

Electronic Stability Program 4-channel, 4-wheel anti-lock with active wheel speed, vehicle speed, steering wheel angle, yaw rate and lateral acceleration sensors, vehicle stability management with 3-stage activation switch, all speed traction control, Brake Assist, Electronic Roll Mitigation and Electronic Brake Distribution Std.

INTERIOR DIMENSIONS mm (inches) unless otherwise specified

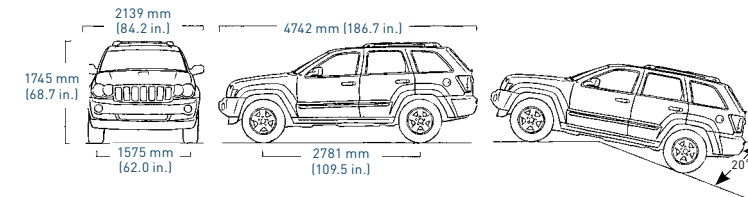
Seating Capacity	5 adults
Headroom , front/rear	998 (39.3)/996 (39.2)
Legroom , front/rear	1059 (41.7)/902 (35.5)
Shoulder Room , front/rear	1501 (59.1)/1483 (58.4)
Hip Room , front/rear	1450 (57.1)/1415 (55.7)
Cargo Volume (cu. ft), rear seat up/folded	997 (34.5)/1909 (67.4)

EXTERIOR DIMENSIONS⁽⁴⁾ mm (inches) unless otherwise specified

Length	
Wheelbase	2781 (109.5)
Overall Length	4742 (186.7)
Width	
Overall Width/Body Width	2139 (84.2)/1844 (72.6)
Track, front/rear	1575 (62.0)/1575 (62.0)
Height (overall with roof rails)	1745 (68.7)
Ground Clearance (at base curb weight)	211 (8.3)
Approach Angle/Departure Angle	34.1°/27.0°
Breakover Angle	20.0°

⁽¹⁾2007 EnerGuide Fuel Consumption Estimates: 16.5L/100 km city, 11.2L/100 km highway (17 mpg city, 25 mpg highway)

⁽²⁾Quadra-Trac I is not appropriate for conditions or situations where low range is required - such as severe off-road driving conditions. ⁽³⁾When equipped with Trailer Tow Group. ⁽⁴⁾Dimensions of SRT8: overall length 5525 mm (195.1 in.); track, front/rear 1789/1758 mm (63.3/62.1 in.); height 1909 mm (67.4 in.).



ESP is a trademark of DaimlerChrysler AG. HEMI, Mopar and Quadra-Trac I are registered trademarks of DaimlerChrysler Corporation. ParkSense, Quadra-Drive II, Quadra-Trac II, Rear Seat Video, UConnect, Video Entertainment System, Navus, EVS and ParkView are trademarks of DaimlerChrysler Corporation. Trail Rated and the Trail Rated logo are trademarks of DaimlerChrysler Corporation. Bilstein is a registered trademark of ThyssenKrupp Bilstein GmbH. Boston Acoustics is a registered trademark of Boston Acoustics, Inc. Brembo is a registered trademark of Freni Brembo S.P.A. Preferred Suede is a trademark of Milliken & Company. Quiet Steel is a trademark of Material Sciences Corporation. SmartBeam is a trademark of Gentex Corporation. SIRIUS is a trademark of SIRIUS Satellite Radio Inc. HomeLink is a registered trademark of Johnson Controls Technology Company. Teflon is a registered trademark of E.I. DuPont de Nemours and Company. Cummins is a registered trademark of Cummins Engine Company, Inc. Bluetooth and the Bluetooth logos are trademarks owned by Bluetooth SIG, Inc., U.S.A., and are used by DaimlerChrysler under licence. iPod is a registered trademark and the iPod design is a trademark of Apple Computer, Inc.

In Gear

For those who choose to navigate the city streets or the less travelled paths of the backwoods. Jeep Goods will provide you with rugged high-quality merchandise fit for the Jeep way of life! Jeepgoods.ca



Enhance your Jeep Grand Cherokee with Authentic Jeep Accessories by Mopar. They're designed specifically for your vehicle, for exceptional fit, finish and performance. Visit your retailer or mopar.ca.

	LAREDO		LIMITED	OVERLAND	SRT8
	E	X	H	P	L
CAPABILITY					
Axle Ratio – 3.07:1 (included with V6 engine and Quadra-Trac I ⁽¹⁾)	•	•			
– 3.55:1 (included with V6 engine and Quadra-Trac II TM)	P	P			
– 3.73:1 (included with V8 engines and CRD)	P	P	•	•	•
Engines – 3.0L V6 CRD Turbo Diesel		0	0	0	
– 3.7L V6	•	•			
– 4.7L FFV V8	0	0	•		
– 5.7L HEMI [®] V8 with MDS			0	•	
– 6.1L SRT HEMI V8					•
Four-Wheel-Drive Systems – Quadra-Trac I ⁽¹⁾ full-time single-speed 4WD includes NV140 transfer case	•	•			
– Quadra-Trac II active 4WD includes NV245 transfer case	0/P	0/P	•		
– Quadra-Drive II TM active 4WD includes NV245 transfer case and ELSD		P	0/P	•	
– SRT 4WD – Electronic on-demand					•
Skid Plate Group – Includes fuel tank, transfer case, and front suspension skid plates and tow hooks (2 front/1 rear)	0/P	0/P	0/P	•	
Suspension – High-performance suspension tuning with Bilstein [®] monotube shock absorbers and front and rear stabilizer bars					•
Trailer Tow Group – Class II (requires V6), Class IV (requires V8 or CRD)	0	0	0	•	
EXTERIOR					
Cargo Convenience Group – Includes roof rack crossbars and cargo area compartment cover	•	•	•	•	
Lighting – Automatic headlamps (ON/OFF) includes headlamps on with wipers and parade mode features			•	•	•
– Round fog lamps integral with front fascia, water-resistant	0	•	•	•	•
– SmartBeam [™] intelligent high beam headlamp control system (included in SRT Group I)			•	•	P
Wiper System – Rain-sensitive automatic wiper system with rain-sensitive and speed-sensitive intermittent front (included in SRT Group I)			•	•	P
INTERIOR					
Air Conditioning/Heat – Manual temperature control with rear seat outlets	•	•			•
– Infrared dual zone climate control with solar sensors and rear seat outlets (included in SRT Group I)			•	•	P
HomeLink[®] Universal Transceiver⁽²⁾ – Programmable radio frequency codes for garage door, security gate and security lighting			•	•	•
Jeep[®] Memory System – Radio station presets, last station settings, driver's seat position, exterior mirrors and accelerator and brake pedal settings for two drivers (included in SRT Group I)			•	•	P
Pedals – Power adjustable	P	•			
– Power adjustable with memory (included in SRT Group I)			•	•	P
Remote Start – (included in SRT Group I)	P	•	•	•	P

• – Included P – Available within a package 0 – Optional ⁽¹⁾Quadra-Trac I is not appropriate for conditions or situations where low range is required, such as severe off-road driving conditions. ⁽²⁾Not compatible with all garage door openers. See your retailer for details. ⁽³⁾Always use seat belts. Children 12 and under should always be in a back seat correctly using an infant or child restraint system, or the seat belt properly positioned, dependent on the child's age and weight. ⁽⁴⁾Intended to provide assistance to the driver. Always exercise appropriate care while reversing. ⁽⁵⁾Must use Bluetooth[™] compatible mobile phone. ⁽⁶⁾Navigation system operates only in certain metropolitan areas. See your retailer for details.

	LAREDO		LIMITED	OVERLAND	SRT8
	E	X	H	P	L
INTERIOR (continued)					
Seats – Heated front (included in SRT Group I)	P	•	•	•	P
– Front continuously variable manual lumbar seat adjustment	•	•	•	•	•
– Eight-way power driver's, manual front passenger seat adjustment	•				
– Eight-way power driver's, four-way power front passenger seat adjustment		•			•
– Eight-way power driver's with memory, four-way power front passenger seat adjustment (included in SRT Group I)			•	•	P
SRT Group I – Includes heated front seats, infrared dual zone climate control, Jeep [®] Memory System, ParkSense [™] Rear Park Assist System, power adjustable pedals, rain-sensitive wiper system, remote starter, SmartBeam headlamp system and UConnect [™] Hands-Free Communication (must have power sunroof)					0
Sunroof – Power with express open/close and comfort-stop features	P	0	•	•	0
SAFETY & SECURITY					
Air Bags⁽³⁾ – Advanced multistage driver and front passenger	•	•	•	•	•
– Advanced side-curtain provide additional protection to front and rear outboard occupants in the event of a collision	•	•	•	•	•
ParkSense^{™(4)} – Rear Park Assist System with shut-off switch (included in SRT Group I)		0	0	•	P
ParkView^{™(4)} – Rear Back-Up Camera (requires navigation system)	P	P	P	P	P
Tire Pressure Monitoring Display System – Features tire valve stem mounted sensors that monitor and display (in EVIC) individual tire pressures for all four rotating tires and warns if pressure is too low or too high			•	•	•
Tire Pressure Monitoring Warning System – Features tire valve stem mounted sensors that monitor pressure and display a warning in the instrument cluster if pressure is too low or too high	•	•			
Vehicle Security System – Monitors doors, flipper glass and liftgate		•	•	•	•
SOUND SYSTEM/ENTERTAINMENT					
Entertainment/Communication – UConnect voice-activated hands-free communication ⁽⁵⁾ (included in SRT Group I)		0	0	0	P
– SIRIUS [™] satellite radio (late availability)		0	0	0	
– Rear DVD Video Entertainment System [™] with DVD player in centre floor console, remote control, two wireless headphone sets, and Rear Seat Video [™] screen in overhead console		0	0	0	0
Navigation/ParkView Group – Includes AM/FM navigation radio with six-disc CD changer, ParkView rear park assist camera and ParkSense rear park assist system		0	0	0	0
Radios – AM/FM stereo radio with CD player, interface for portable audio devices	•	•			
– AM/FM/RDS stereo radio with six-disc CD/MP3 player and clock	P	0	•	•	•
– Full screen GPS/DVD-based navigation system ⁽⁶⁾ with AM/FM/RDS stereo radio, six-disc CD/MP3 player and clock		P	P	P	P
Speakers – Six-speaker system	•				
– Boston Acoustics [®] Premium Sound System with six Boston Acoustics speakers and 276-watt digital amplifier		•	•	•	•



The Authentic Difference: a Jeep® Brand original, by design. Start with something as individual as a Jeep 4x4. Then add Authentic Jeep Accessories by Mopar®, designed and engineered to meet the strict standards expected from the official parts accessories division of DaimlerChrysler Motors Company LLC. That's the Authentic Difference — a difference you can't find anywhere else in the aftermarket. From the boldly rugged styling of Moulded Running Boards to the unending enjoyment of a Navigation Radio, Mopar Accessories are designed by a DaimlerChrysler Engineering Team to offer your Grand Cherokee premium protection, convenience, style or entertainment. With Authentic Jeep Accessories by Mopar, the possibilities are boundless.

GOOD LOOKS CAN TAKE YOU FAR. With the Appearance Package, you'll have the rugged good looks to keep you looking good far off the beaten path.

[A] Chrome Air Deflector | Put the bold good looks right up front with a Chrome Air Deflector, designed to help deflect gravel, dirt and bugs up and away from your windshield.

Chrome Grille | Display your good looks right up front. Premium Grille will not adversely affect engine airflow or impede the opening and closing of the hood. Also available in Brushed Aluminum.

[B] Moulded Running Boards | For a step up in stylish convenience, our Moulded Running Boards are constructed of heavy-gauge steel for safe and easy entry and exit, and feature a Black moulded-grain plastic outer cover for the finishing touch.

[C] Door Sill Guards | Start your day on a bright note while protecting your vehicle's interior sills from scratches. Front Guards prominently feature the Grand Cherokee name.





PREMIUM ELECTRONICS: TURN ON, TUNE IN AND HEAD OUT.

[A] Navus™ Dash Mounted Navigation System | Add advanced and affordable GPS technology to your vehicle. Features include touch screen controls, complete map and points of interest data, turn-by-turn direction prompts, trip information, voice instructions, automatic re-routing and much more.

[B] Navigation Radio (REC) | Sophistication made simple. This combination DVD navigation/stereo system provides you with turn-by-turn directions. Highlights include voice instruction, automatic re-route calculation, full map displays, extensive points of interest listings and much more.

[C] DVD Rear Seat Video™ | No lines and no waiting with this integrated, single-disc CD/DVD featuring a 7-inch (or optional 10-inch) wide screen, wireless headphones and remote.

[D] Remote Start | Hit the ground running with the ability to start your vehicle from up to 244 metres (800 feet) away. The system is designed to operate seamlessly with your vehicle's electronic system. A two-way remote start system is also available.

[E] Premium Radios | Our premium radios feature 66 watts of power and generous AM/FM presets. Selections include:

- AM/FM stereo with six-disc CD player, MP3 and hands-free compatibility.^[1] (RAQ)
- AM/FM stereo with six-disc CD player, MP3 and WMA compatibility. (RAK)

[F] ParkSense™ Rear Park Assist System^[2] | Advanced system uses sound waves and audio-visual indicators to manoeuvre in tight spaces at parking speeds.

[G] Rear-view Camera^[2] | Get an extra set of eyes in the back of your head. The camera's 3½-inch diagonal screen shows a view of what's behind you and includes on-screen markers to help you determine an object's distance from your vehicle.

[H] UConnect™ Hands-Free Communication^[3] | This voice-activated communication system allows you to dial your wireless phone through simple voice commands utilizing a Bluetooth™ Hands-Free Profile wireless phone.

[I] iPod® Interface Module | The FM-bounded system allows you to maintain your music selection through your iPod control buttons.

EVSM I (Electronic Vehicle Security) | Get a lock on security. EVS I is designed to work with your factory-provided keyless entry and provides perimeter and interior protection with horn-honk alarm, starter interrupt and dash-mounted LED (not shown).

^[1]Requires factory-installed UConnect system.

^[2]Intended to provide assistance to the driver.

Always exercise appropriate care while reversing.^[3]Must use Bluetooth™ compatible mobile phone.