



JEEP® LIBERTY | 2007

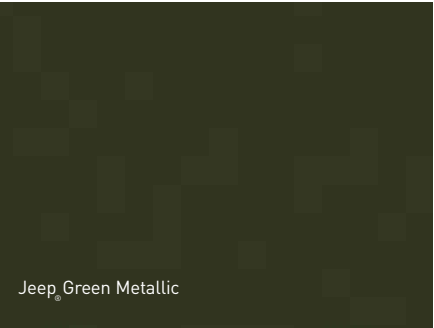




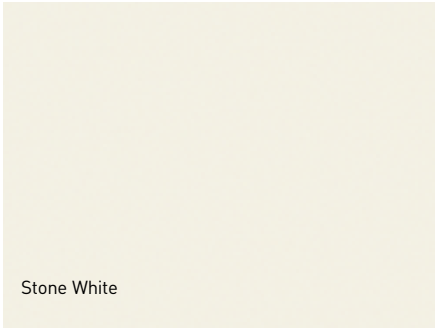
Black



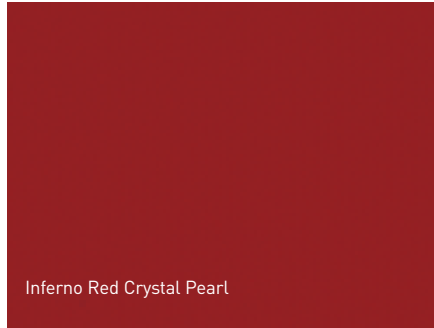
Light Khaki Metallic



Jeep Green Metallic



Stone White



Inferno Red Crystal Pearl



Bright Silver Metallic



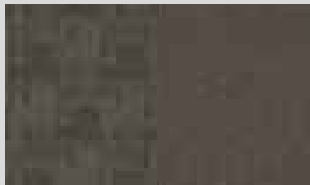
Midnight Blue Pearl

NOTE: Due to occasional printing irregularities, the colours shown may vary slightly from actual vehicle colours.

LIBERTY SPORT

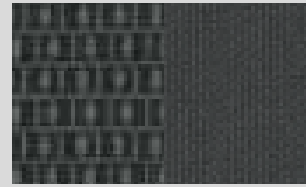


Cloth
Medium Slate Grey | Standard



Cloth
Medium Khaki | Standard

LIBERTY LIMITED EDITION



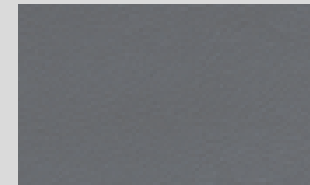
Premium Cloth
Medium Slate Grey | Standard



Leather
Light Greystone | Available



Premium Cloth
Medium Khaki | Standard



Leather
Light Slate Grey | Available

LIBERTY SPORT



16-inch Full-Face Steel
Painted Argent | Standard



16-inch Mechanica Cast Aluminum
Painted Sparkle Silver | Available



17-inch Oasis Chrome-Clad
Cast Aluminum | Available

LIBERTY LIMITED EDITION



17-inch Dakar Cast Aluminum
Painted Sparkle Silver | Standard



17-inch Oasis Chrome-Clad
Cast Aluminum | Available

**POWERTRAIN**

Engine	3.7L SOHC V6
Displacement (cu. in.)	226
Net Power – kW (hp) @ rpm	157 (210) @ 5200
Net Torque – N-m (lb-ft) @ rpm	319 (235) @ 4000
Fuel System	Sequential multipoint electronic fuel injection
Transmission	
6-speed manual with overdrive and hydraulically assisted, adjustment-free clutch	Std.
4-speed automatic with overdrive and lockup torque converter; electronically controlled	Opt.

FOUR-WHEEL-DRIVE SYSTEM (transfer case)

Command-Trac™ NV241 HD (with manual transmission), part-time; 2-speed with shift-on-the-fly; includes low range [2.72:1] and Neutral	Std.
Command-Trac NV231 (with automatic transmission), part-time; 2-speed with shift-on-the-fly; includes low range [2.72:1] and Neutral	Std.
Selec-Trac™ NV242 full-time; with shift-on-the-fly; includes low range [2.72:1] and Neutral, allows for full- or part-time four-wheel drive [4WD]	Opt.

CAPACITIES/WEIGHTS kilograms (pounds) unless otherwise specified

Fuel Tank – L (imp. gal.)	78 (17.1)
Base Curb Weight	
3.7L V6 engine, (with 6-speed manual)	1801 (3971)
3.7L V6 engine, (with 4-speed automatic)	1803 (3974)
Payload Capacity (with all occupants and cargo)	522 (1150)
Maximum Gross Vehicle Weight Rating	
3.7L V6	2540 (5600)

TOWING DATA

Max Loaded Trailer Weight – kg (lb)	
3.7L V6, 6-speed manual	1588 (3500)
3.7L V6, 4-speed automatic	2268 (5000) ⁽¹⁾

Class III Towing

Maximum Gross Combined Weight Rating	4701 (10,364) ⁽²⁾
--------------------------------------	------------------------------

Tongue Load Limit 340 (750)⁽²⁾

RESTRICTION: Trailer frontal area limitation of 5.9 sq. m [64 sq. ft] with 2268 kg [5000 lb] trailer; maximum trailer length of 7.6 m [25 feet]; trailer sway control recommended. This chart is meant to serve as a quick and easy reference guide on how to properly equip your Jeep® Liberty for towing. For specific details, discuss your plans with your Jeep retailer, who will help you select the right equipment to meet your specifications.

⁽¹⁾Requires Trailer Tow Group. ⁽²⁾Requires automatic transmission and Trailer Tow Group.

Trail Rated and the Trail Rated logo are trademarks of DaimlerChrysler Corporation. Command-Trac, Selec-Trac, Sentry Key, UConnect and Rear Seat Video are trademarks of DaimlerChrysler Corporation. ESP is a trademark of DaimlerChrysler AG. Mopar is a registered trademark of DaimlerChrysler Corporation. Bluetooth and the Bluetooth logos are trademarks owned by Bluetooth SIG, Inc., U.S.A., and are used by DaimlerChrysler under licence. HomeLink is a registered trademark of Johnson Controls Technology Company. Infinity is a trademark of Harman International Industries, Inc. SIRIUS is a trademark of SIRIUS Satellite Radio Inc. Cummins is a registered trademark of Cummins Engine Company, Inc.

ABOUT THIS CATALOGUE: Since the time of printing, some of this information may have been updated. Ask your retailer for details before ordering.

Specifications, descriptions and illustrations contained in this catalogue are based on information believed to be correct at the time this publication was approved for printing. However, accuracy cannot be guaranteed. DaimlerChrysler reserves the right to discontinue models or options at any time or change specifications and materials, equipment or design without notice and without incurring obligation.

Some of the equipment may not be exactly as shown in this catalogue. Some of the equipment described or illustrated in this catalogue may not be standard, and may be available only at extra cost, as factory installed or retailer installed; items described as "available" may be standard on some models and optional, or not available, on others. Equipment referred to as "available" or "optional" may be at extra cost. Some options are required in combination with other options. For the price of the model with the equipment you desire or verification of specifications and equipment availability described herein, see your Chrysler, Jeep®, Dodge retailer.

Colour availability may vary by model. Due to printing limitations, the colours shown here and throughout the catalogue may vary slightly from the actual hue. See your retailer to view accurate colour chips.

Jeep is a registered trademark of DaimlerChrysler Canada Corporation, used under licence by DaimlerChrysler Canada Inc.

©2006 DaimlerChrysler Canada Inc. All rights reserved.

2007 Chrysler, Jeep®, and Dodge vehicles are backed by a 5-year or 100,000-kilometre* fully transferable Powertrain Warranty with \$0 deductible, plus 24-hour roadside assistance.[†] Basic Warranty coverage is for 3 years or 60,000 kilometres.* Rust-through coverage on all body sheet metal is for 3 years. The Cummins® Turbo Diesel engine is protected by a separate Limited Warranty, covering the engine for 5 years or 160,000 kilometres.*

*Whichever comes first. †Some conditions may apply. The 5/100 Warranty does not apply to vehicles sold for certain commercial uses or to SRT including Viper models. See your retailer for details.

BODY/SUSPENSION/CHASSIS**Body Design**

UniFrame construction: All steel body sheet metal and frame structural members welded and bonded into a single strong unit Std.

IS43 Suspension

Independent with cast iron lower and forged steel upper control arms, coil springs, stabilizer bar, gas-charged shock absorbers; 1247 kg [2750-lb] gross axle weight rating Front

Solid axle with two lower trailing arms, A-shaped upper arm, coil springs, stabilizer bar, gas-charged shock absorbers; 1429-kg [3150-lb] gross axle weight rating Rear

Steering Power assisted, rack and pinion

Overall Ratio 18.2:1

Turns lock-to-lock 3.6

Turning Diameter – m (ft) curb-to-curb 10.9 (35.9)

Brake System

Power assisted; ventilated disc brakes; 287 mm [11.3"] rotor diameter Front

Power assisted; non-vented disc brakes; 284 mm [11.2"] rotor diameter Rear

Electronic Stability Program (ESP™)

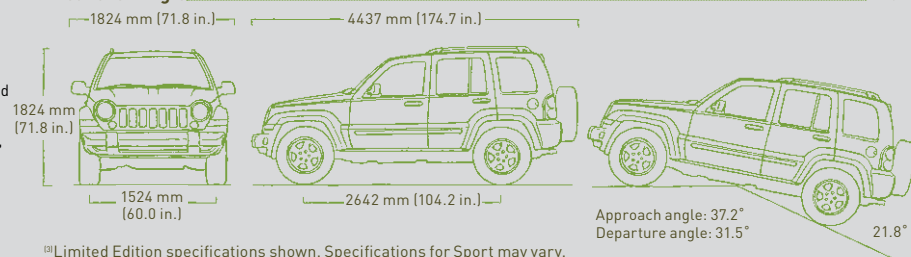
Four-channel, four-wheel anti-lock with active wheel speed, vehicle speed, steering wheel angle, yaw rate and lateral acceleration sensors, vehicle stability management with two-stage activation switch, all speed traction control, Brake Assist, Electronic Roll Mitigation (ERM) and Electronic Brake Distribution (EBD) Std.

INTERIOR DIMENSIONS millimetres (inches) unless otherwise specified

Headroom – front/rear	1034 (40.7)/1072 (42.2)
Legroom – front/rear	1036 (40.8)/945 (37.2)
Shoulder Room – front/rear	1435 (56.5)/1435 (56.5)
Hip Room – front/rear	1448 (57.0)/1204 (47.4)
Cargo Volume – L (cu. ft) rear seat up/folded	878 (31.0)/1954 (69.0)
Seating Capacity	5

EXTERIOR DIMENSIONS⁽³⁾ millimetres (inches) unless otherwise specified

Length	
Wheelbase	2647 (104.2)
Overall Length	4437 (174.7)
Overhang, front/rear	734 (28.9)/1052 (41.4)
Width	
Overall Width at body	1824 (71.8)
Track, front/rear	1524 (60.0)/1519 (59.7)
Height (overall with roof rails)	1824 (71.8)
Ground Clearance (at base curb weight)	
Running Ground Clearance	239 (9.4)
Approach Angle/Departure Angle	37.2°/31.5°
Breakover Angle	21.8°



⁽³⁾Limited Edition specifications shown. Specifications for Sport may vary.

In Gear For those who choose to navigate the city streets or the less travelled paths of the backwoods. Jeep Goods will provide you with rugged high-quality merchandise fit for the Jeep way of life! Jeepgoods.ca



Enhance your Jeep Liberty with Authentic Jeep Accessories by Mopar. They're designed specifically for your vehicle, for exceptional fit, finish and performance. Visit your retailer or mopar.ca.

	LIMITED EDITION		
	SPORT	F	G
C A P A B I L I T Y			
Four-Wheel-Drive System – Command-Trac™ NV231 part-time (requires automatic transmission) Command-Trac NV241HD part-time (requires manual transmission)	•	•	
– Selec-Trac™ NV242 full-time (requires automatic transmission)	0	0	•
Off-Road Group – Heavy-duty engine cooling, power steering cooler, P235/70R16 OWL all-terrain tires and Skid Plate Group with tow hooks	0		
Powertrain – 3.7L V6 engine with 6-speed manual transmission	•		
– 3.7L V6 engine with 4-speed automatic transmission	0	•	•
Skid Plate Group – Front suspension, transfer case, fuel tank and transmission skid plates; tow hooks (included in Off-Road Group)	0/P		0
Trailer Tow Group – Class III receiver hitch, 7-pin wiring harness, 7- to 4-pin adapter, power steering cooler and heavy-duty engine cooling for automatic transmission	0	0	0
E X T E R I O R			
Glass – Deep tint on rear door, rear quarter and liftgate windows	0	•	•
Lighting – Fog lamps	•	•	•
Mirrors – Foldaway, power, heated; includes auto-dimming rear-view mirror (requires overhead console)		0	•
Roof Rack Side Rails – 68 kg (150 lb) capacity (Black on Sport; Bright on Limited Edition)	•	•	•
I N T E R I O R			
Air Conditioning – Manual temperature control	•	•	•
Console – Front row, full length floor with covered storage bin, padded armrest and cup holders located in front and rear	•	•	•
– Overhead, with Electronic Vehicle Information Centre (EVIC), trip computer and HomeLink® Universal Transceiver ⁽¹⁾		0	•
Floor Mats – Carpeted, front and rear	•	•	•
Mirrors – Rear-view, day/night	•	•	
– Rear-view, auto-dimming (included with heated exterior mirrors)		P	•
Power Convenience Group – Remote keyless/illuminated entry, Sentry Key Engine Immobilizer and speed sensitive power locks	•	•	•
Power Accessory – 12V auxiliary power outlet, located in instrument panel and rear quarter trim panel	•	•	•
Seat Fabric – Cloth	•		
– Premium cloth		•	
– Leather-faced		0	•
Seats – Easy-fold 65/35-split folding rear bench with adjustable outboard head restraints	•	•	•
– Six-way power driver's (included with leather-faced seats)		0/P	•
– Six-way power front passenger			•
– Heated front seats			•

	LIMITED EDITION		
	SPORT	F	G
I N T E R I O R (c o n t i n u e d)			
Sunroof – Power with one-touch open and vent feature	0	0	0
Windows – Power with driver and front passenger one-touch auto down	•	•	•
S A F E T Y & S E C U R I T Y			
Air Bags⁽²⁾ – Advanced multistage driver and front passenger	•	•	•
– Side-curtain with roll sensing technology for front and rear outboard occupants	0	0	0
Brakes – Four-wheel disc anti-lock	•	•	•
Electronic Stability Program (ESP™)⁽³⁾ – Includes Brake Assist, all speed traction control and Electronic Roll Mitigation	•	•	•
Engine Block Heater	•	•	•
Remote Keyless/Illuminated Entry – Includes two transmitters	•	•	•
Security Group – Cargo compartment cover and security alarm (requires deep tint glass)	0	•	•
Sentry Key™ – Anti-theft engine immobilizer	•	•	•
Speed Control – Electronic with steering wheel mounted controls (includes leather wrapped steering wheel)	0	•	•
Tire Pressure Monitoring Display System – (requires overhead console)		0	•
Tire Pressure Monitoring Warning Lamp		•	
S O U N D S Y S T E M S			
Radios – AM/FM radio with single-disc CD player and changer controls	•	•	
– AM/FM radio with integrated six-disc CD changer	0	0	•
– AM/FM radio with integrated six-disc CD changer and integrated DVD-based GPS navigation system ⁽⁴⁾		0	0
SIRIUS™ Satellite Radio System⁽⁵⁾ – Includes one year subscription provided by SIRIUS		0	0
Speakers – Six speakers	•	•	
– ∞ Infinity™ Premium Sound System with six speakers and steering wheel mounted audio controls (requires speed control and GPS navigation radio or six-disc CD changer)	0	0	•
UConnect™ Hands-Free Communication System⁽⁶⁾			0

• – Included P – Available within package noted 0 – Optional

⁽¹⁾Not compatible with all garage door openers. See your retailer for details. ⁽²⁾Always use seat belts. Children 12 and under should always be in a back seat correctly using an infant or child restraint system, or the seat belt properly positioned, dependent on the child's age and weight. ⁽³⁾No system, no matter how sophisticated, can repeal the laws of physics or overcome careless driving actions. Performance is limited by available traction, which snow, ice and other conditions can affect. When the ESP warning lamp in the instrument cluster flashes, the driver needs to use less throttle and adapt speed and driving behaviour to prevailing road conditions. Always drive carefully, consistent with conditions. Please always wear your seat belt. ⁽⁴⁾Navigation system operates only in certain metropolitan areas. See your retailer for details. ⁽⁵⁾Late availability. ⁽⁶⁾Must use Bluetooth™ compatible mobile phone.