

2008 EXPEDITION & EXPEDITION MAX



Built for life in Canada

Big. Just like your plans.

Built to encourage your adventurous nature, Expedition and Expedition MAX feature bold good looks and seating for up to 8. Plus, a longer wheelbase on Expedition MAX gives you 129% more cargo space behind its 3rd-row seat. New for 2008: the luxurious King Ranch® Edition and an available Reverse Camera System. It's time to gather everybody, pack everything and hit the road to anywhere.

A WHOLE LOTTA PULL

Coupled with a 6-speed automatic transmission, the proven 5.4L Triton® V8 engine gives you a mighty 300 hp and 365 lb.-ft. of torque, plus a maximum towing capacity of up to 4082 kg (9000 lbs.)* The optional air suspension with rear load leveling helps deliver a smooth ride and confident handling regardless of the vehicle's load.

*See page 7 for details.

RUGGED UNDERPINNINGS

Expedition's outstanding torsional rigidity, stiff frame, monotube shocks and enhanced steering gear all contribute to its smooth ride and excellent steering control, which should help keep the kids comfy while you hunt for your campsite down that unforgiving path.

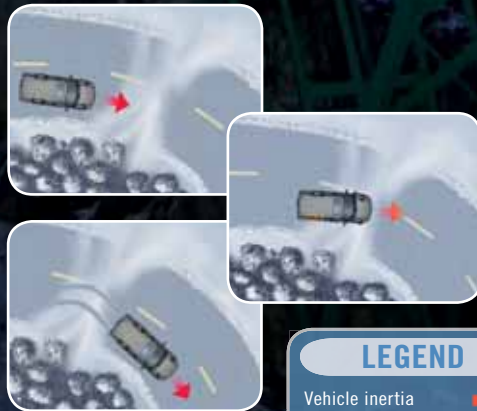
Expedition MAX Limited in Black and Expedition Eddie Bauer in Dark Copper Metallic.

BUILT-IN STABILITY



Our electronic stability enhancement system, AdvanceTrac with class-exclusive* RSC, uses a unique vehicle-roll motion sensor to measure what competitors' systems ignore or can only estimate. The sensor works with the Anti-lock Brake System (ABS), traction control and yaw control to determine when and how the system will apply individual brakes and modify engine power to help keep all 4 wheels firmly planted. This system helps in many real-world situations, such as when you're making an emergency manoeuvre or when driving on slippery surfaces like snowy, muddy or wet roads.

Remember that even advanced technology cannot overcome the laws of physics. It's always possible to lose control of a vehicle due to inappropriate driver input for the conditions.

*Full-size SUV and Full-size Extended-length SUV class, excluding other Ford Motor Company vehicles.



LEGEND

Vehicle inertia 
Brakes activating to maintain control 

ALL 6 AIRBAGS STANDARD

The safest Expedition ever** includes front-seat side airbags, plus the dual-stage driver and front-passenger front airbags of our class-exclusive Personal Safety System® and the 3-row side-curtain airbags of our Safety Canopy™ System — all standard.

**Based on internal Ford safety testing results of current generation Expedition.



Take advantage of its capability.

AdvanceTrac® with RSC® (Roll Stability Control™) and Control Trac® 4-wheel drive (4WD) are both standard on every Expedition. AdvanceTrac with RSC is our electronic stability enhancement system, which features a unique vehicle-roll motion sensor and helps keep Expedition firmly grounded. Control Trac's 4x4 AUTO mode helps optimize traction under varying conditions. An Off-Road Package is optional on XLT.



All-terrain ready.

Expedition's multilink independent rear suspension really shines in the back country. Since each rear wheel reacts independently, Expedition easily maintains its composure, even over harsh, uneven surfaces. So get out there and roam.



Expedition XLT in Vapour Silver Metallic.

Entertain and inform with ease.

Every Expedition comes with SIRIUS Satellite Radio,* offering you digital-quality channels – including sports, news, entertainment and 100% commercial-free music – all across Canada. To make travelling to new places even easier and more enjoyable, our available DVD-based Navigation System features new voice activation. And to top it off, Expedition's interior is so well insulated, you can actually use your "inside" voice and be heard all the way back in the 3rd row.

*Includes complimentary 6-month prepaid subscription and online access. See your Ford of Canada Dealer or contact SIRIUS at 1-888-539-7474 for more information.



MP3 FRIENDLY

Since the personal MP3 player is *the* must-have gadget, every Expedition sound system is equipped with an auxiliary audio input jack to accommodate yours. Of course, all of the CD players and changers still have the ability to read your MP3-formatted CDs as well.



MORE THAN MOVIES

Expedition's optional Rear-Seat DVD Entertainment System features a large 8" colour LCD flip-down screen, an infrared remote control and 2 sets of wireless headphones. Rear-seat passengers can use it to play everything from DVDs and CDs to their favourite video games, when paired with your compatible gaming system.



Hindsight.

Expedition's available Reverse Camera System, new for 2008, conveniently displays the image from a liftgate-mounted camera in your rearview mirror when the vehicle is in reverse. It's optional on Eddie Bauer, King Ranch® and Limited.

Expedition Limited leather-trimmed interior in Charcoal Black with available equipment (U.S. model shown).

SIRIUS
SATellite RADIO

Saddle up in a new King Ranch.[®]

Our convenient PowerFold™ 3rd-row seat, unique wood trim and 3 rows of Chaparral leather-trimmed seats are a few of King Ranch's luxurious features. In the 2nd row, our class-exclusive CenterSlide™ feature enables you to pull the centre of the seat forward up to 269 mm (10.6 in.). And with both rear seats folded flat, you get 3067 litres (108.3 cu. ft.) of cargo space in Expedition or 3704 litres (130.8 cu. ft.) in Expedition MAX.

MAX ORDER

This versatile cargo organizer, standard on Expedition MAX, helps keep the 1206 litres (42.6 cu. ft.) behind the 3rd-row seat neat and tidy. The simple divider can be used to create 2 distinct cargo areas or 2 tiers of shelf-like storage.



POWERFULLY EASY

Expedition's available, new, power running boards automatically deploy when you open a door and retract when you close it. They pair well with the available power liftgate that raises and lowers at the push of a button on your remote keyless-entry key fob. Talk about easy living.



Expedition King Ranch Chaparral leather-trimmed interior in Charcoal Black.

Comfort on demand.

Treat yourself to 3 levels of warm *and* cool luxury with Expedition's class-exclusive heated and cooled front seats. They are standard on Eddie Bauer, King Ranch and Limited.



MODEL LINEUP

XLT – 17" aluminum wheels • Body-colour lower bodyside mouldings, wheel-lip mouldings and bumpers • Chrome door handles • Fog lamps • Black, power, heated sideview mirrors with security approach lamps • Black roof side rails and crossbars • Black running boards • AM/FM premium stereo with single-CD player with MP3 capability • Auxiliary audio input jack • SIRIUS Satellite Radio • 1st-row captain's chairs with 6-way power driver seat with manual lumbar • 2nd-row 40/20/40 split bench seat with CenterSlide™ feature • 3rd-row 60/40 split fold-flat-to-floor bench seat • Colour-coordinated carpeted front and rear floor mats • Overhead console • 1st- and 2nd-row map lights • Remote keyless entry with driver door-mounted keypad

Eddie Bauer – 18" machined-aluminum wheels • Chrome exhaust tip • Pueblo Gold lower bodyside mouldings, wheel-lip mouldings and bumpers • Black, power, heated sideview mirrors with memory, security approach lamps and integrated turn signals • Pueblo Gold running boards • Two-tone leather-trimmed seats with heated and cooled 1st-row captain's chairs • 10-way power driver seat including power lumbar and recline with memory feature and 6-way power passenger seat • PowerFold™ 3rd row • Power-adjustable pedals with memory • Dual-zone Electronic Automatic Temperature Control • Universal Garage Door Opener • Message centre • Leather-wrapped steering wheel with secondary audio and climate controls • Audiophile® Sound System with AM/FM stereo and 6-disc in-dash CD changer with MP3 capability • Reverse Sensing System

King Ranch® – 18" machined-aluminum wheels with King Ranch logo on centre caps • King Ranch badging on front fender and liftgate • Chaparral leather trim on all 3 rows of seating, steering wheel, centre console lid and door inserts • Floor mats with King Ranch logo • Simulated wood on switch plates, floor console, shifter handle and instrument panel

Limited – 18" chrome-clad aluminum wheels • Monochromatic appearance • Chrome roof side rails with black crossbars • Body-colour running boards • Body-colour, power-folding, heated sideview mirrors with memory, security approach lamps and integrated turn signals • Headlamps with blackout treatment • 10-way power-adjustable 1st-row leather-trimmed low-back bucket seats including power lumbar and power recline • Power moonroof • Power liftgate • Leather-wrapped steering wheel with wood trim

Each series includes the standard equipment of the previous series, except where additions/exceptions are noted.



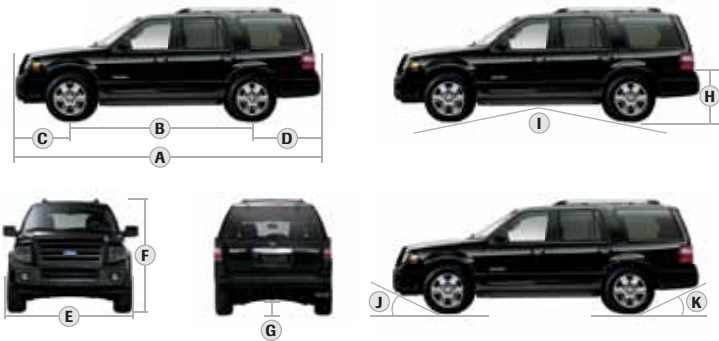
Expedition XLT in Vapour Silver Metallic,
Expedition Eddie Bauer in Dark Copper Metallic,
Expedition MAX King Ranch in Stone Green Metallic
and Expedition Limited in Black.

Find your match.

The 2008 Ford Expedition is available in your choice of 4 well-equipped models: the capable XLT, the sophisticated Eddie Bauer, the rugged new King Ranch and the luxurious Limited. Expedition MAX comes in 3 models: Eddie Bauer, King Ranch and Limited. Choose the one that fits you and your family best – and start planning your new adventures today.

SPECIFICATIONS

DIMENSIONS



EXTERIOR mm (in.)	EXPEDITION	EXPEDITION MAX
A. Overall length	5245 (206.5")	5621 (221.3")
B. Wheelbase	3023 (119.0")	3327 (131.0")
C. Overhang — front	996 (39.2")	996 (39.2")
D. Overhang — rear	1227 (48.3")	1298 (51.1")
E. Width (excluding mirrors)	2002 (78.8")	2002 (78.8")
Width (including mirrors)	2332 (91.8")	2332 (91.8")
F. Height (with options)	1961 (77.2")	1974 (77.7")
G. Ground clearance (minimum running)	221 (8.7")	221 (8.7")
H. Liftover height	884 (34.8")	897 (35.3")
I. Ramp breakover angle	18.3°	18.7°
J. Angle of approach	22.6°	24.1°
K. Angle of departure	21.5°	20.9°

INTERIOR

1st Row		
Head room	1006 (39.6")	1003 (39.5")
Shoulder room	1605 (63.2")	1605 (63.2")
Hip room	1529 (60.2")	1529 (60.2")
Leg room	1044 (41.1")	1044 (41.1")
2nd Row		
Head room	1011 (39.8")	1008 (39.7")
Shoulder room	1618 (63.7")	1618 (63.7")
Hip room	1521 (59.9")	1521 (59.9")
Leg room	993 (39.1")	993 (39.1")
3rd Row		
Head room	973 (38.3")	965 (38.0")
Shoulder room	1318 (51.9")	1704 (67.1")
Hip room	1275 (50.2")	1316 (51.8")
Leg room	958 (37.7")	958 (37.7")
Cargo Volume litres (cu. ft.)		
Maximum cargo volume	3067 (108.3)	3704 (130.8)
Behind 2nd row	1557 (55.0)	2421 (85.5)
Behind 3rd row	527 (18.6)	1206 (42.6)

Cargo and load capacity limited by weight and weight distribution.

ENGINE

	HORSEPOWER hp @ rpm	TORQUE lb.-ft. @ rpm	TOWING CAPACITY kg (lbs.)
EXPEDITION 5.4L 3-Valve Triton V8	300 @ 5000	365 @ 3750	4082 (9000)
EXPEDITION MAX 5.4L 3-Valve Triton V8	300 @ 5000	365 @ 3750	3969 (8750)

NOTE: Maximum towing capability when properly equipped. Maximum capability will vary based on passenger and cargo loads, and optional equipment installed on the vehicles. See your Ford of Canada Dealer for more information.

WHEELS

- A** 20" Chrome-Clad Aluminum with King Ranch Centre Cap
Optional on King RanchSM and MAX King Ranch
- B** 18" Chrome-Clad Aluminum
Standard on Limited and MAX Limited
- C** 18" Machined-Aluminum with King Ranch Centre Cap
Standard on King Ranch and MAX King Ranch
- D** 17" Aluminum
Standard on XLT
- E** 18" Machined-Aluminum
Standard on Eddie Bauer and MAX Eddie Bauer; Optional on XLT
- F** 20" Chrome-Clad Aluminum
Optional on Eddie Bauer, MAX Eddie Bauer, Limited and MAX Limited



SPECIFICATIONS

EXPEDITION & EXPEDITION MAX STANDARD FEATURES

MECHANICAL

5.4L 3-valve Triton® V8 engine

6-speed automatic transmission with overdrive

4-wheel independent suspension with coil-over shocks – Front: double wishbone, Short- and Long-Arm (SLA) design; rear: multilink design

4-wheel power disc brakes with Anti-lock Brake System (ABS), Brake Assist and Electronic Brakeforce Distribution (EBD)

Battery saver

Body-on-frame construction

Control Trac® 4-wheel-drive system

Fuel tank – 106-litre capacity (129-litre on Expedition MAX)

Non-limited-slip rear axle – 3.31 ratio (Expedition only);

3.73 ratio (Expedition MAX only)

Spare tire – Full-size

Stabilizer bars – Front and rear

Variable-assist, power rack-and-pinion steering

SAFETY/SECURITY

Personal Safety System® for driver and front passenger – Includes dual-stage front airbags,* safety belt pretensioners, safety belt energy-management retractors, safety belt usage sensors, driver-seat position sensor, crash severity sensor and restraint control module

Adaptive stroking steering column

AdvanceTrac® with RSC® (Roll Stability Control™)

Autolock – Doors lock automatically when driving

Belt-Minder® safety belt reminder

Child-safety rear door locks

Front-seat side airbags

LATCH – Lower anchors and tether anchors for child-safety seats on rear-outboard seat positions

Safety belts – 3-point for all outboard positions and 2nd- and 3rd-row centre positions

Safety Canopy™ System

SecuriLock® passive anti-theft engine immobilizer system

Side-intrusion door beams

Tire Pressure Monitoring System

SEATING

1st-row captain's chairs or low-back buckets – Model specific

2nd-row 40/20/40 split bench with CenterSlide™ seat (slide-forward feature for centre section) – Reclines and folds flat to floor

3rd-row 60/40 split bench – Folds flat onto floor

INTERIOR

Accessory delay for power features

Air conditioning

Assist handles – 1st row (2) and 2nd row (2)

Auto-dimming rearview mirror

Automatic headlamps with rainlamp

Auxiliary audio input jack

Auxiliary rear air conditioning and heat

Cargo organizer (Expedition MAX only)

Cruise control – Steering wheel-mounted

Cupholders – 9

Floor console – Storage bin, coin holder, rear audio controls, 2 headphone jacks, 4 cupholders, power point, auxiliary audio and climate controls, and pen holder

Floor mats – Carpeted 1st and 2nd rows (with King Ranch® logo on King Ranch)

Front door-trim panels with map pockets and cupholders (up to 0.5L)

Head restraints – All outboard positions and 2nd-row-centre position (if equipped with standard 40/20/40 split bench)

Height-adjustable shoulder belts – 1st-row outboard positions

Instrumentation – Analog with voltmeter, speedometer/odometer, tachometer, and oil pressure, water temperature and fuel gauges

Lights – Glove compartment, front dome/map, 2nd-row map and rear cargo area; illuminated entry and theatre lighting

Overhead console – Map lights, single sunglasses holder and conversation mirror (plus rear quarter-window switches, if equipped)

Power door locks with child-safety rear door locks

Power driver seat – 6-way with manual lumbar

Power points – 1st row (1), 2nd row (1) and rear cargo area (1)

Power windows – With one-touch-down driver-side feature

Rear floor air ducts

SIRIUS Satellite Radio (includes complimentary 6-month prepaid subscription)

Steering wheel – Leather-wrapped

Sun visors – Dual-blade with illuminated vanity mirrors

Tilt steering column

EXTERIOR

Antenna – Concealed in rear quarter glass

Door and liftgate handles – Chrome with body-colour bezels

Fog lamps

Headlamps – Complex-reflector system with integrated park/turn-signal indicators (blackout treatment on Limited)

Heavy Duty Trailer Tow Package – Includes Class IV hitch receiver, 4-pin and 7-pin connectors, heavy-duty auxiliary transmission oil cooler, heavy-duty radiator and electronic brake wiring kit

Liftgate with flip-up glass

Lower bodyside mouldings – Body-colour-painted on XLT and Limited; Pueblo Gold-painted on Eddie Bauer and King Ranch

Mirrors – Power, heated sideview with security approach lamps and fold-away design (includes turn signals and memory on Eddie Bauer, King Ranch and Limited; power-folding on Limited)

Privacy glass (rear doors, quarter windows and rear window)

Rear-window defroster

Remote keyless-entry system – Driver door-mounted keypad and 2 key fobs

Running boards – Black on XLT; Pueblo Gold on Eddie Bauer and King Ranch; body-colour on Limited

Taillamps – Complex reflectors with two-tone colour lenses and built-in backup lighting

Tow hooks – Front

Wheel-lip mouldings – Body-colour-painted on XLT and Limited; Pueblo Gold-painted on Eddie Bauer and King Ranch

Windshield wipers – Front: speed-sensitive, 2-speed variable-intermittent; rear: intermittent with washer

*Always wear your safety belt and secure children in the rear seat.

© 2007 SIRIUS Satellite Radio Inc. "SIRIUS"; the SIRIUS dog logo, channel names and logos are trademarks of SIRIUS Satellite Radio Inc.

SPECIFICATIONS

EXPEDITION & EXPEDITION MAX FEATURES & OPTIONS

EXPEDITION XLT – 4x4				
EXPEDITION/EXPEDITION MAX EDDIE BAUER – 4x4				
EXPEDITION/EXPEDITION MAX KING RANCH® – 4x4				
EXPEDITION/EXPEDITION MAX LIMITED – 4x4				
MECHANICAL				
●	—	—	—	17" aluminum wheels
○	●	—	—	18" machined-aluminum wheels
—	—	●	—	18" machined-aluminum wheels with King Ranch centre caps
—	—	—	●	18" chrome-clad aluminum wheels
—	○	—	○	20" chrome-clad aluminum wheels
—	—	○	—	20" chrome-clad aluminum wheels with King Ranch centre caps
●	—	—	—	P265/70R17 on-/off-road OWL tires
○	●	●	●	P255/70R18 all-season OWL tires
—	○	○	○	P275/55R20 all-season BSW tires
○	○	○	○	Air suspension with rear load leveling and message centre (not available with Off-Road Package)
●	●	●	●	Axle ratio – 3.31 (non-MAX only)
⦿	⦿	⦿	⦿	Axle ratio – 3.73 (standard on MAX, optional on non-MAX)
○	—	—	—	Off-Road Package – Includes skid plates and black tubular step bars (not available with air suspension)
SEATING				
●	—	—	—	1st-row captain's chairs with floor console, 6-way power driver seat with manual lumbar – Cloth trim
○	●	●	—	1st-row low-back bucket seats with 10-way power driver seat, including power lumbar, recline, and memory, and 6-way power passenger seat with manual lumbar
—	—	—	●	1st-row low-back bucket seats with 10-way power driver and front-passenger seats including power lumbar and power recline, driver-side memory and 2-way adjustable head restraints
○	○	○	○	2nd-row captain's chairs
●	—	—	—	3rd-row fold-flat 60/40 split bench
—	●	●	●	Heated and cooled front seats
○	●	●	●	PowerFold™ 3rd-row seat

EXPEDITION XLT – 4x4				
EXPEDITION/EXPEDITION MAX EDDIE BAUER – 4x4				
EXPEDITION/EXPEDITION MAX KING RANCH – 4x4				
EXPEDITION/EXPEDITION MAX LIMITED – 4x4				
INTERIOR				
●	—	—	—	Air conditioning – Manual
—	●	●	●	Air conditioning – Dual-zone Electronic Automatic Temperature Control
●	—	—	—	AM/FM premium stereo with single-CD player with MP3 capability (160 watts)
○	—	—	—	AM/FM premium stereo with 6-disc in-dash CD changer with MP3 capability (160 watts)
—	●	●	●	Audiophile® Sound System with AM/FM stereo and 6-disc in-dash CD changer with MP3 capability (340 watts)
—	—	●	—	Chaparral leather trim on centre console lid, door inserts and steering wheel
○	●	●	●	Convenience Package – Includes power-adjustable pedals (with memory on Eddie Bauer, Limited and King Ranch), power rear quarter windows, Universal Garage Door Opener, message centre and Reverse Sensing System
○	○	○	○	Floor mats – Rubber, in 1st and 2nd rows* (not available on MAX)
⦿	●	●	●	Message centre** – Includes outside air temperature readout, compass, average fuel economy, trip odometer, distance-to-empty and elapsed time
—	○	○	○	Navigation Radio System – DVD-based, voice-activated Navigation System and AM/FM stereo with 6-disc console-mounted CD changer, MP3 capability and RDS
○	○	○	●	Power moonroof (with mini-overhead console)
○	○	○	○	Rear-Seat DVD Entertainment System†
—	●	●	●	Steering wheel with secondary audio and climate controls
●	●	—	—	Steering wheel – Leather-wrapped
—	—	●	●	Steering wheel – Leather-wrapped with wood trim
EXTERIOR				
●	—	—	●	Bumpers – Body-colour-painted upper and lower
—	●	●	—	Bumpers – Body-colour-painted upper, Pueblo Gold-painted lower
—	●	●	●	Chrome exhaust tip
●	●	●	—	Grille – Chrome
—	—	—	●	Grille – Body-colour
—	●	●	●	Mirrors – Power, heated sideview with memory settings, security approach lamps, fold-away design (power-folding on Limited) and integrated turn signals (body-colour cap on Limited)
—	○	○	●	Power liftgate
—	○	○	○	Power running boards (requires power liftgate)
●	●	●	—	Raised roof rails – Black with black crossbars
—	—	—	●	Raised roof rails – Chrome with black crossbars
—	○	○	○	Reverse Camera System – Liftgate-mounted camera displays image in rearview mirror

● Standard ⦿ Select Availability ○ Optional — Not Available

*Standard carpeted floor mats included with this option.

**Requires air suspension or Convenience Package on XLT.

†Requires AM/FM premium stereo with 6-disc in-dash CD changer on XLT.

Audiophile is a registered trademark of Audiophile, Inc.

SPECIFICATIONS

EXTERIOR COLOURS



White Suede



Pueblo Gold Metallic



Redfire Metallic



Dark Blue Pearl Metallic



Vapour Silver Metallic



Stone Green Metallic



Black



White Sand Tri-Coat Metallic



Dark Copper Metallic

Ford uses clearcoat paint for beauty and protection. Colours shown are representative only. Not all colours are available on all models. See your Ford of Canada Dealer for actual paint/trim options. Vehicles shown may contain optional equipment.

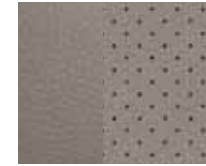
INTERIOR COLOURS



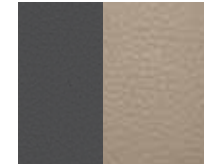
Stone Cloth
Standard on XLT



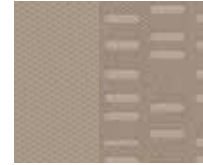
Stone Leather
Optional on XLT



Stone Leather
with Perforated Inserts
Standard on Limited



Greystone Leather*
with Camel Inserts
Standard on Eddie Bauer



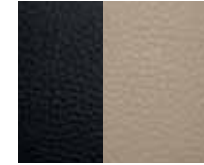
Camel Cloth
Standard on XLT



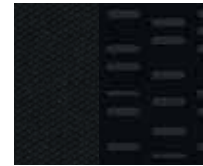
Camel Leather
Optional on XLT



Charcoal Black Leather
w/Caramel Perforated Inserts
Standard on Limited



Charcoal Black Leather
with Camel Inserts
Standard on Eddie Bauer



Charcoal Black Cloth
Standard on XLT



Charcoal Black Leather
Optional on XLT



Charcoal Black Leather
with Perforated Inserts
Standard on Limited



Chaparral Leather**
Standard on King Ranch®

*Camel environment. **Charcoal Black environment.

STONE	
CAMEL	
CHARCOAL BLACK	
XLT	
●	White Suede [†]
●	Pueblo Gold Metallic
●	Redfire Metallic
●	Dark Blue Pearl Metallic [†]
●	Vapour Silver Metallic [†]
●	Black
EDDIE BAUER	
●	White Suede [†]
●	Redfire Metallic
●	Dark Blue Pearl Metallic [†]
●	Stone Green Metallic [†]
●	Black
●	Dark Copper Metallic

STONE	
CAMEL	
CHARCOAL BLACK	
KING RANCH	
●	White Suede [†]
●	Redfire Metallic
●	Stone Green Metallic [†]
●	Dark Copper Metallic
LIMITED	
●	Vapour Silver Metallic [†]
●	Stone Green Metallic [†]
●	Black
●	White Sand Tri-Coat Metallic ^{††}
●	Dark Copper Metallic

[†]New for 2008. ^{††}Extra cost.

2008 FORD EXPEDITION & EXPEDITION MAX

- Up to 3704 litres (130.8 cu. ft.) of cargo space available in Expedition MAX
 - 300-hp 5.4L Triton® V8 engine with 6-speed automatic transmission
 - Maximum towing capacity of up to 4082 kg (9000 lbs.)*
 - Comprehensive collection of standard safety features
- Control Trac® 4-wheel drive and AdvanceTrac® with RSC® (Roll Stability Control™) both standard
- Available new Reverse Camera System and power-deployable running boards
 - New King Ranch® Edition for Expedition and Expedition MAX

*See page 7 for details.



Vehicle shown with optional Genuine Ford Accessories.

© 2007 Ford Motor Company of Canada, Limited

For more information on
Ford of Canada and Ford products,
please visit our website:



Our commitment to you... Peace-of-Mind Protection

- **Basic Coverage:**
3 years/60,000 km
- **Powertrain Warranty:**
5 years/100,000 km
- **Corrosion Warranty:**
5 years/unlimited distance
- **Roadside Assistance:**
5 years/100,000 km**

Certain conditions apply. For more information on these warranties and coverages, ask your local Ford of Canada Dealer or visit ford.ca.
**No additional cost.

For prompt, courteous answers to your questions:

Ford Customer Relationship Centre
1-800-565-3673
Ford Credit Customer Service Centre
1-877-636-7346

Please Note: The electronic version of the Ford of Canada vehicle brochure is a condensed version of the original printed version.

Competitive comparisons are based on 2007 competitive models, publicly available information and Ford data at the time of release of the 2008 original printed version. Some features discussed may be optional. Vehicles shown may contain optional equipment. Features shown may be offered only in combination with other options or subject to additional ordering requirements or limitations. Dimensions shown may vary due to optional features and/or production variability. Following publication of the 2008 original printed brochure, certain changes in standard equipment, options and the like, or product delays may have occurred which would not be included in these pages. Your Ford of Canada Dealer is your best source for up-to-date information. Ford Motor Company of Canada, Limited, reserves the right to change product specifications at any time without incurring obligations. Colours may not be exactly as illustrated. Please see your sales consultant for specific colour and model availability. Please visit your local dealer or www.ford.ca for complete vehicle details.