

# 2008 SPORT TRAC



Built for life in Canada

## Ready. Set. Go.

Can't wait to hit the trails, dominate the slopes or just roam the backcountry? Sport Trac is ready for your kind of action. Its composite cargo box resists dents and scratches. Its standard 4.0L SOHC V6 engine and 5-speed automatic transmission pump out 210 hp and 254 lb.-ft. of torque. And its Control Trac® 4-wheel drive takes you from everyday driving to serious rock-crawling at the touch of a button. You'll be conquering all sorts of obstacles in no time.



## Smart Power.

The optional 4.6L 3-valve V8 engine and 6-speed automatic transmission combine to give Sport Trac a gutsy 292 hp and 300 lb.-ft. of torque. The electronically controlled 6-speed delivers peak power when you need it – such as during acceleration or when climbing a hill – and peak efficiency whenever possible.



### SMOOTH RIDER

Sport Trac's rugged independent rear suspension is designed to tackle rough terrain and uneven road surfaces with ease. In fact, it gives Sport Trac a full 224 mm (8.8") of combined wheel travel (jounce plus rebound) in the back, which contributes to its extreme flexibility.



### BIG FUN FACTOR

When properly equipped with the optional Class III/IV Trailer Tow Package and the optional V8, Sport Trac 4x2 can tow up to 3248 kg (7160 lbs.).

Sport Trac Limited in Vapour Silver Metallic with available equipment.



## Gear up for new adventures.

Sport Trac's versatile cargo box holds up to 1062 L (37.5 cu. ft.) of gear, and over 170 L (6 cu. ft.) more with the optional cargo cage bed extender. The cargo box features a corrosion-proof, composite exterior and a dent-proof, scratch-resistant interior. Plus, there are special notches inside to help create tiered storage. And a cargo box power point is ready to energize your essentials (think air compressor, cooler, etc.). Time to stop dreaming. And start packing.

Sport Trac Limited in Redfire Metallic.



### BELOW DECK

Removable drain plugs and weather-resistant lids make Sport Trac's 3 cargo box gear bins the perfect places to stow stuff you'd like to keep wet or dry.



### SECURE SITUATION

Sport Trac's rugged cargo box features a total of 10 integrated tie-down hooks, including 3 of these beefy cleats down each side of its exterior.



### Power Play.

The convenience of a power-sliding rear window is now standard on every Sport Trac. Use it to access the cargo box in a hurry or to let some fresh air into the cabin.

# SYNC

Powered by **Microsoft**

## Exclusive Ford SYNC™\*

Groundbreaking hi-tech innovation. This voice-activated, hands-free communications and entertainment system integrates most Bluetooth®-enabled mobile phones and nearly any portable media player with your Ford Sport Trac. Visit [ford.ca](http://ford.ca) for full connectivity details.

\*Late availability.



Sport Trac Limited leather-trimmed interior in Camel with Sand inserts (U.S. model shown).

## Fresh Take for 2008.

Sport Trac's optional DVD-based Navigation System features convenient new voice activation so you can keep both hands on the wheel as you track down your next great adventure. (U.S. model shown.)

## Unwind in rugged refinement.

From its exceptionally stiff frame to the careful choice of interior materials, Sport Trac is designed to deliver a quiet, comfortable ride. And when you're ready to rock, the available Audiophile® Sound System, with its 6-disc in-dash CD changer and 8" subwoofer, can definitely help. So can the standard SIRIUS Satellite Radio,\*\* with its digital-quality channels — including sports, news, entertainment and 100% commercial-free music — playing all across Canada.

**SIRIUS**  
SATELLITE RADIO

\*\*Includes complimentary 6-month prepaid subscription and online access. See your Ford of Canada Dealer or contact SIRIUS at 1-888-539-7474 for more information.

## ASSISTANCE ON DEMAND


AdvanceTrac with RSC, standard on every Sport Trac, is an electronic stability enhancement system that actually measures what other manufacturers' systems ignore or can only estimate. Our system features a vehicle-roll motion sensor in addition to AdvanceTrac's Anti-lock Brake System (ABS), traction control and yaw control. RSC uses the sensor to directly measure the vehicle's roll-rate at least 100 times every second, which helps determine when and how the system will apply individual brakes and modify engine power to help keep all 4 wheels firmly planted.

Remember that even advanced technology cannot overcome the laws of physics. It's always possible to lose control of a vehicle due to inappropriate driver input for the conditions.



### LEGEND

Vehicle inertia 

Brakes activating to maintain control 

## All 6 Airbags Now Standard.

New for 2008, you get the side-curtain airbags of our patented Safety Canopy™ System, plus the dual-stage driver and front-passenger front airbags of our class-exclusive Intelligent Safety System™ and front-seat side airbags, all standard on every Ford Sport Trac.



## Get serious about safety.

No matter where adventure leads, you can count on Sport Trac's cutting-edge safety and security features to take good care of you. A perfect example: AdvanceTrac® with class-exclusive\* RSC® (Roll Stability Control™), which can help in many real-world situations, such as when you're making an emergency manoeuvre to avoid something on the road, or driving on slippery surfaces like snowy, muddy, wet or gravel roads. Finally – your turn to enjoy the ride.

\*Sport Utility Truck class.



Sport Trac Limited in Black with available equipment.

## MODEL LINEUP

Limited includes the standard equipment of XLT, except where additions/exceptions are noted.

**XLT** – 17" painted-aluminum wheels with P245/65R17 all-season OWL tires • Black exterior accents • 3-bar chrome grille with nostrils • Automatic headlamps • Fog lamps • Power sideview mirrors with security approach lamps • Black step bars • Black roof side rails • Keyless-entry keypad • Power windows • Power rear window • Auxiliary audio input jack • Cloth front bucket seats with 6-way power driver seat and 2-way head restraints • Auto-dimming rearview mirror • Moulded-rubber flooring • Heavy-duty berber floor mats • 2-line message centre with outside temperature display and compass • Cruise control

**Limited** – 18" machined-aluminum wheels with P235/65R18 all-season OWL tires • Monochromatic exterior appearance • Silver-painted roof side rails (with black crossbars) and step bar accents • Hard tonneau cover • 2-tone heated leather seats with 10-way power driver seat • 4-line message centre • Power-adjustable pedals • Power moonroof • Reverse Sensing System



## Find your match.

Ready to plan your next amazing adventure? There's a 2008 Ford Sport Trac waiting for you to jump in and go. Start with your choice of 2 well-equipped models – the spirited XLT and the luxurious Limited – then get out of town.

Sport Trac XLT in Stone Green Metallic and Sport Trac Limited in Dark Blue Pearl Metallic.

# SPECIFICATIONS

## STANDARD FEATURES

### MECHANICAL

- 4-wheel Anti-lock Brake System (ABS)
- Non-limited-slip rear axle – 3.73 ratio (3.55 with V8)
- Class II trailer tow hitch receiver
- Control Trac® 4-wheel-drive system (4x4 models only)
- Independent front and rear suspensions
- One-touch integrated start

### SAFETY/SECURITY

- Adaptive driver and front-passenger front airbags\*
- Adaptive energy-absorbing steering column
- AdvanceTrac® with RSC® (Roll Stability Control™)
- Belt-Minder® safety belt reminder
- Front-Passenger Sensing System
- Front-seat side airbags
- Safety belts with pretensioners/energy-management retractors (height-adjustable in front row)
- Safety Canopy™ System with rollover sensor for 1st and 2nd rows
- SecuriLock® passive anti-theft engine immobilizer system
- Tire Pressure Monitoring System

### INTERIOR

- 2-line message centre with outside temperature display and compass
- 60/40 split-folding rear bench seat
- Air conditioning – Manual
- AM/FM stereo/single-CD player with MP3 capability
- Auto-dimming rearview mirror
- Auxiliary audio input jack
- Coat hooks – 2
- Floor console with floor shifter
- Front dome/map lights
- Grab handles – Driver and front passenger
- Illuminated glove compartment
- Large overhead console
- Power windows with one-touch-up/-down driver-side feature
- SIRIUS Satellite Radio (includes complimentary 6-month prepaid subscription)
- Sun visors with illuminated vanity mirrors
- Steering wheel – Leather wrapped with secondary audio controls, cruise control and tilt column

### EXTERIOR

- 17" painted-aluminum wheels
- P245/65R17 all-season OWL tires
- Cargo box – Composite material with 3 storage compartments
- Fog lamps
- Grille – Chrome, 3-bar design with nostrils
- Power point – Cargo box
- Power sideview mirrors with security approach lamps
- Rear window – Power-sliding
- Remote keyless-entry system with keyless-entry keypad
- Roof side rails – Black
- Tie-downs – Cargo area

\*Always wear your safety belt and secure children in the rear seat.

© 2007 SIRIUS Satellite Radio Inc. "SIRIUS," the SIRIUS dog logo, channel names and logos are trademarks of SIRIUS Satellite Radio Inc.

## FEATURES & OPTIONS

### XLT – 4x2 or 4x4

### LIMITED – 4x2 or 4x4

#### MECHANICAL

- 4.0L SOHC V6 engine with 5-speed automatic transmission
- 4.6L 3-valve V8 with 6-speed automatic transmission and non-limited-slip rear axle – 3.55 ratio
- 17" painted-aluminum wheels
- 17" machined-aluminum wheels
- 18" machined-aluminum wheels
- 18" chrome-clad aluminum wheels (only available with Limited Chrome Package)
- P245/65R17 all-season OWL tires
- P235/65R18 all-season OWL tires

#### SAFETY/SECURITY

- Reverse Sensing System

#### SEATING

- Cloth trim – Front bucket seats with 2-way adjustable head restraints; 6-way power driver seat with manual lumbar, and 4-way manual passenger seat
- Leather trim – Two-tone front, heated bucket seats with 10-way power driver seat including power lumbar, and 4-way manual passenger seat with manual lumbar

#### INTERIOR

- Adjustable pedals
- Audiophile® Sound System with AM/FM stereo/6-disc in-dash CD changer with MP3 capability and 8" subwoofer
- Ford SYNC™ – Voice-activated in-vehicle communications and entertainment system (late availability)
- Dual-zone Electronic Automatic Temperature Control
- DVD-based Navigation System\*\* – Includes Audiophile Sound System and secondary steering wheel-mounted controls
- Power moonroof with shade (includes mini-overhead console)
- Rear-Seat DVD Entertainment System

#### EXTERIOR

- Bumpers, sideview mirrors, door handles and wheel-lip mouldings – Black, moulded-in-colour
- Bumpers, sideview mirrors, door handles and wheel-lip mouldings – Body-colour-painted
- Cargo cage bed extender
- Heated windshield – Includes heated sideview mirrors
- Roof side rails – Black
- Roof side rails – Silver-painted
- Roof-rail crossbars – Black
- Step bars – Black
- Step bars – Silver accents
- Tonneau cover – Hard

#### PACKAGES

- Class III Trailer Tow Package – Includes 7-pin trailer wiring harness and connector, and frame-mounted hitch receiver
- Limited Chrome Package – Includes 18" chrome-clad aluminum wheels, chrome sideview mirror caps, chrome roof rails and chrome step bars

Standard  Optional  Not Available

\*\*Includes auto-dimming rearview mirror on XLT. Audiophile is a registered trademark of Audiophile, Inc.

# SPECIFICATIONS

## ESTIMATED FUEL CONSUMPTION RATINGS<sup>†</sup> L/100 KM (MPG)

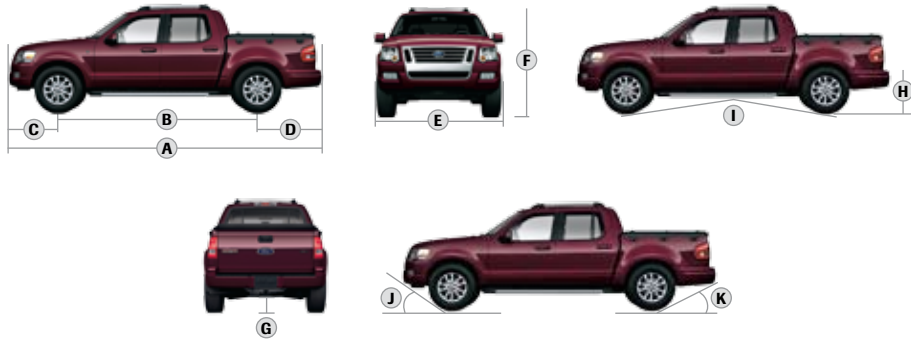
	<b>4x2</b> city/hwy.	<b>4x4</b> city/hwy.
<b>4.0L V6</b>	15.1/10.0 (19/28)	16.0/10.8 (18/26)
<b>4.6L V8</b>	15.9/10.2 (18/28)	16.8/10.8 (17/26)

<sup>†</sup>Based on Transport Canada approved test methods.

## ENGINES

	<b>HORSEPOWER</b> hp @ rpm	<b>TORQUE</b> lb.-ft. @ rpm
<b>4.0L V6</b>	210 @ 5100	254 @ 3700
<b>4.6L V8</b>	292 @ 5750	300 @ 3950

## DIMENSIONS



<b>EXTERIOR</b> mm (in.)	<b>4x2/4x4</b>
A. Overall length	5339 (210.2)
B. Wheelbase	3315 (130.5)
C. Overhang - front	899 (35.4)
D. Overhang - rear	1125 (44.3)
E. Width (excluding mirrors) Width (including mirrors)	1872 (73.7) 2154 (84.8)
F. Height (with options)	1842 (72.5)
G. Ground Clearance (minimum running)	213 (8.4)
H. Open tailgate to ground	785 (30.9)
I. Ramp breakover angle	17.2°
J. Angle of approach	28.7°
K. Angle of departure	17.2°

<b>INTERIOR</b> mm (in.)	<b>4x2/4x4</b>
<b>Front</b>	
Head room	1011 (39.8)
Shoulder room	1499 (59.0)
Hip room	1407 (55.4)
Leg room	1077 (42.4)
<b>Rear</b>	
Head room	978 (38.5)
Shoulder room	1496 (58.9)
Hip room	1410 (55.5)
Leg room	937 (36.9)
<b>Cargo Volume</b> litres (cu. ft.)	
Behind front seat	1257 (44.4)
Cargo box	1062 (37.5)

Cargo and load capacity limited by weight and weight distribution.

## TRAILER TOWING APPLICATIONS

### MAXIMUM LOADED TRAILER WEIGHT kg (lbs.)

<b>AXLE RATIO</b>	<b>4.0L V6</b>		<b>AXLE RATIO</b>	<b>4.6L V8</b>	
3.73	4x2 Class II	1588 (3500)	3.55	4x2 Class II	1588 (3500)
	4x4 Class II	1588 (3500)		4x4 Class II	1588 (3500)
	4x2 Class III/IV	2386 (5260)		4x2 Class III/IV	3248 (7160)
	4x4 Class III/IV	2309 (5090)		4x4 Class III/IV	3175 (7000)

Maximum weights shown are for properly equipped vehicles with required equipment and a 68-kg (150-lb.) driver. Weight of additional options, equipment, passengers and cargo must be deducted from this weight. For additional information, see your Ford of Canada Dealer.

Cargo and load capacity limited by weight and weight distribution.

## WHEELS

- A** 17" Machined-Aluminum  
Optional on XLT
- B** 17" Painted-Aluminum  
Standard on XLT
- C** 18" Chrome-Clad Aluminum  
Included in Limited Chrome Package
- D** 18" Machined-Aluminum  
Standard on Limited





# SPECIFICATIONS

## EXTERIOR COLOURS



White Suede



Stone Green Metallic



Redfire Metallic



Dark Blue Pearl Metallic



Silver Birch Metallic



Vapour Silver Metallic



Black



Dark Cherry Metallic



Orange Frost Metallic

### CAMEL

### LIGHT STONE

### DARK CHARCOAL

### XLT

- ● White Suede\*
- ● Stone Green Metallic\*
- ● Redfire Metallic
- ● Dark Blue Pearl Metallic
- ● Silver Birch Metallic
- ● Vapour Silver Metallic\*
- ● Black

### LIMITED

- ● White Suede\*
- ● Stone Green Metallic\*
- ● Redfire Metallic
- ● Dark Blue Pearl Metallic
- ● Silver Birch Metallic
- ● Vapour Silver Metallic\*
- ● Black
- ● Dark Cherry Metallic
- ● Orange Frost Metallic

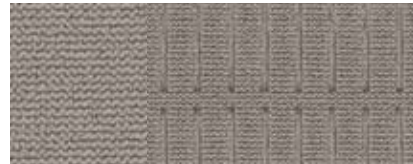
\*New for 2008.

Ford uses clearcoat paint for beauty and protection. Colours shown are representative only. Not all colours are available on all models. See your Ford of Canada Dealer for actual paint/trim options. Vehicles shown may contain optional equipment.

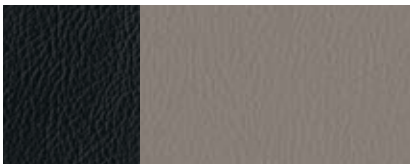
## INTERIOR COLOURS



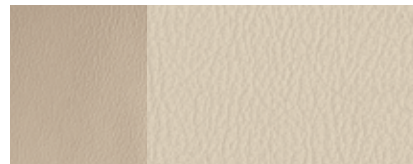
Camel Cloth with Sand Inserts  
Standard on XLT



Light Stone Cloth  
Standard on XLT



Dark Charcoal Leather with Light Stone Inserts  
Standard on Limited



Camel Leather with Sand Inserts  
Standard on Limited

## 2008 FORD SPORT TRAC

- Rugged capability of Control Trac® 4-wheel drive and independent rear suspension
  - Available 292-hp V8 engine and 6-speed automatic transmission
  - Versatile composite cargo box featuring dent-proof, scratch-resistant inner liner
- Optional new Ford SYNC™ voice-activated, hands-free, customizable media system (late availability)
  - Available DVD-based Navigation System with new voice activation
  - All 6 airbags now standard on every Sport Trac

For more information on  
Ford of Canada and Ford products,  
please visit our website:

[ford.ca](http://ford.ca)

### Our commitment to you... Peace-of-Mind Protection

- **Basic Coverage:**  
3 years/60,000 km
- **Powertrain Warranty:**  
5 years/100,000 km
- **Corrosion Warranty:**  
5 years/unlimited distance
- **Roadside Assistance:**  
5 years/100,000 km\*

Certain conditions apply. For more information on these warranties and coverages, ask your local Ford of Canada Dealer or visit [ford.ca](http://ford.ca).  
\*No additional cost.

### For prompt, courteous answers to your questions:

Ford Customer Relationship Centre  
1-800-565-3673  
Ford Credit Customer Service Centre  
1-877-636-7346

Please Note: The electronic version of the Ford of Canada vehicle brochure is a condensed version of the original printed version.

Competitive comparisons are based on 2007 competitive models, publicly available information and Ford data at the time of printing of the 2008 original printed version. Some features discussed may be optional. Vehicles shown may contain optional equipment. Features shown may be offered only in combination with other options or subject to additional ordering requirements or limitations. Dimensions shown may vary due to optional features and/or production variability. Following publication of the 2008 original printed brochure, certain changes in standard equipment, options and the like, or product delays may have occurred which would not be included in these pages. Your Ford of Canada Dealer is your best source for up-to-date information. Ford Motor Company of Canada, Limited, reserves the right to change product specifications at any time without incurring obligations. Colours may not be exactly as illustrated. Please see your sales consultant for specific colour and model availability. Please visit your local dealer or [www.ford.ca](http://www.ford.ca) for complete vehicle details.