



FORWARD THINKING.

Canada 

General Motors continues to invest in technologies that reduce greenhouse gas emissions and lessen the dependence on petroleum. Beyond today's hybrids and alternative fuel solutions, GM is developing game-changing technology with the upcoming Volt plug-in electric car and a test fleet of zero-emissions Hydrogen Fuel Cell Vehicles already on the road.

GM also demonstrates its commitment to environmental sustainability by the way it produces this brochure. Research has told us that people like you continue to value printed brochures. So GM prints them on Forest Stewardship Council-certified paper. The goal is to protect wildlife habitat, ensure clean water and to keep forests healthy.

It's just one more way that GM integrates green thinking into every aspect of its activities. Just like you.

For more information about the scope of GM's green initiatives, visit greenbydesign.gm.ca



09 MALIBU



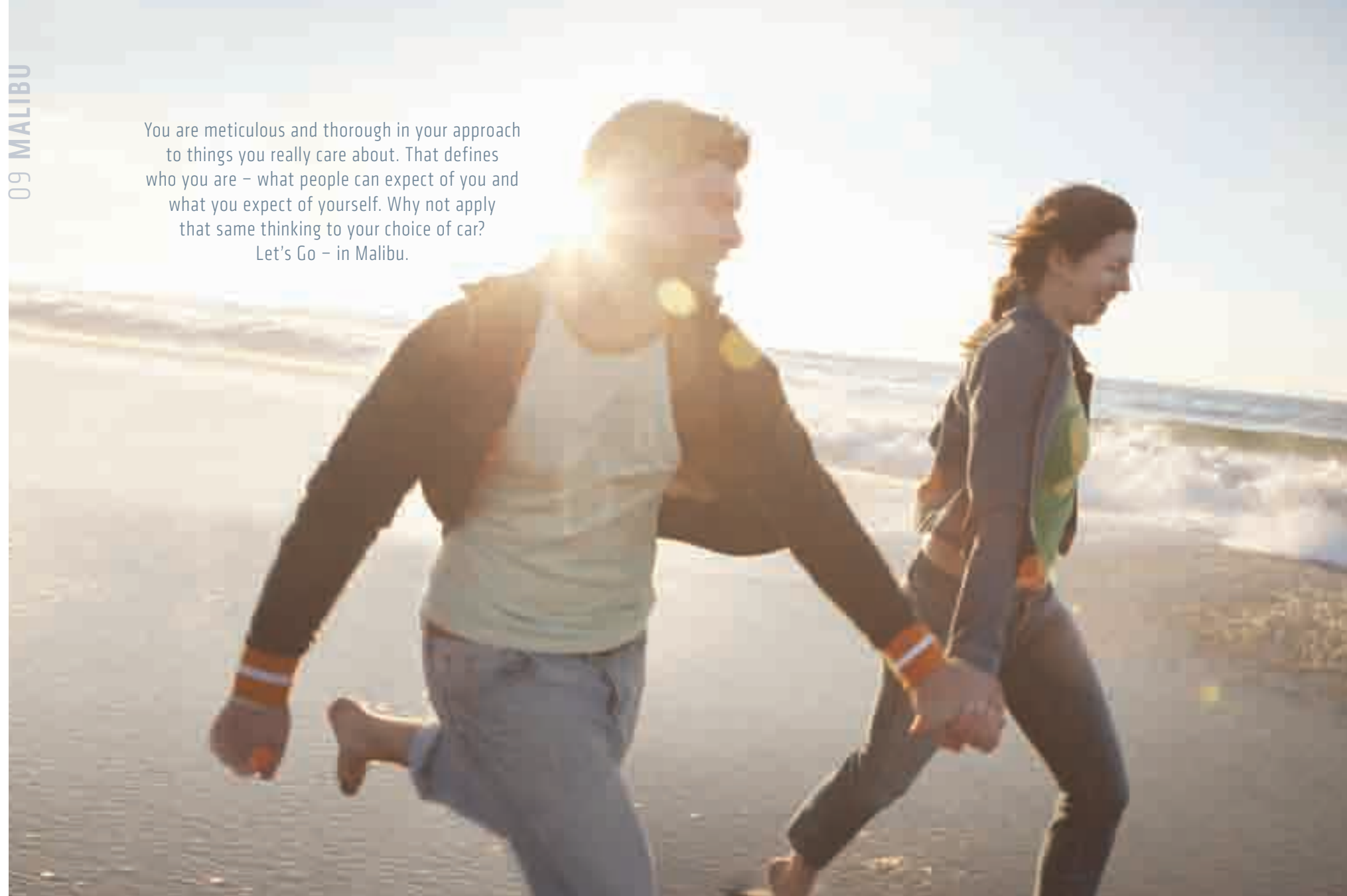
OFFICIAL VEHICLE



190-09-B-004E



You are meticulous and thorough in your approach to things you really care about. That defines who you are – what people can expect of you and what you expect of yourself. Why not apply that same thinking to your choice of car?
Let's Go – in Malibu.



WHEN IT'S RIGHT, YOU KNOW IT.

There is a special feeling of achievement when everything comes together exactly as intended, upholding the most stringent standards – and accepting no compromises. That accurately describes the story behind the Chevrolet Malibu. The styling is confident. The green technology is highlighted by Chevrolet's first hybrid passenger car. Driver control is enhanced by the standard StabiliTrak™ system that includes panic brake assist. The quality is impeccable. The safety rates five stars.* No wonder the Malibu has become such a media darling, earning rave reviews and receiving prestigious awards, including the 2008 North American Car of the Year and the "Highest Ranked Midsize Car in Initial Quality" in the U.S. from J.D. Power and Associates 2008 Initial Quality StudySM.** The only missing piece is you. The 2009 Chevrolet Malibu.

*Five-star rating is for the driver and front-passenger seating positions in the frontal crash test and for the front and rear seating positions in the side-impact crash test. Model tested with standard side-impact air bags. U.S. government star ratings are part of the National Highway Traffic Safety Administration's (NHTSA's) New Car Assessment Program (NCAP) (safercar.gov).

**Chevrolet Malibu received the lowest number of problems per 100 vehicles among midsize cars in the proprietary J.D. Power and Associates 2008 Initial Quality StudySM. Study based on responses from 81,530 new-vehicle owners, measuring 344 models and measures opinions after 90 days of ownership. Proprietary study results are based on experiences and perceptions of owners surveyed in February – April 2008. Your experiences may vary. Visit jdpower.com

"The new Malibu is a game changer!"

– Richard Russell, *The Chronicle Herald*, November 2007



Malibu was named the "Highest Ranked Midsize Car in Initial Quality" in the U.S. by J.D. Power and Associates 2008 Initial Quality StudySM.**



For more information about Malibu, visit chevrolet.gm.ca

LET'S GO



CHEVROLET

NOT JUST THE NEXT BIG IDEA – YOUR NEXT CAR.

How many times have you heard someone say: "My next car is going to be a hybrid." Malibu Hybrid* delivers on that intent as the most affordable mid-size hybrid in Canada.** It combines the GM Hybrid Propulsion Electric System with a gasoline-powered 2.4L ECOTEC VVT engine. When decelerating or stopping in traffic, the engine shuts off and the 36-volt, six-module battery kicks in with 10,000 watts of peak power, charged principally by regenerative braking. The transition between gasoline and electric power is so smooth, you may not even notice it. What you will notice is the fuel efficiency, with 5.8 L/100 km highway and 7.9 L/100 km city ratings.† And Malibu Hybrid is covered by an extended 8-year/160,000 km Hybrid Component Limited Warranty.†† So you can go on and on with Malibu Hybrid.

*Limited availability.

**Based on 2009 MY Manufacturer's Suggested Retail Price and competitive information available at the time of printing.

Does not include any government rebate programs that may be in effect.

†Based on GM Testing in accordance with approved Transport Canada test methods. Your actual fuel consumption may vary.

††Whichever comes first. Conditions and limitations apply. See dealer for details.



HYBRID

Malibu Hybrid's charge-assist gauge indicates whether the system is charging or providing power. The ECO (economy) gauge informs you when you are exceeding fuel efficiency estimates.

Malibu Hybrid, shown in Silver Ice Metallic.

IT LOOKS EVEN BETTER AFTER YOU SURVEY ITS LIST OF FEATURES.

The aggressive stance, long wheelbase and short overhangs give Malibu its distinctive personality. But to fully appreciate what this mid-size sedan has to offer, you have to take a closer look. A detailed inspection will reveal the tight fit of the exterior body panels – an excellent example of Malibu’s overall quality. But you need to get behind the wheel to get the entire story. That’s where you’ll feel the assured control provided by the standard four-wheel disc brakes with an anti-lock braking system (ABS), in addition to the StabiliTrak electronic stability control system that’s now standard on all Malibu models. Take a long, admiring look at Malibu.

“... the best-looking mid-size sedan on the market...”

– Ted Laturus, *The Globe and Mail*, May 2008



A The dual-port silver mesh grille features chrome surrounds. Fog lights and rocker mouldings with bright inserts add a dynamic finishing touch to LTZ.

B The rear LED tail lights on Malibu LTZ take their cue from the iconic Corvette, keeping the exterior lines clean by positioning the lights exclusively on the rear body panel.



Malibu LTZ, shown in Dark Gray Metallic with available equipment.

“INSIDE, THE MALIBU IS, IN A WORD, STUNNING.”

– Graeme Fletcher, *National Post*, November 2007

That's high praise, but when you take your seat inside Malibu, you'll find out why it's so deserving. The signature dual cockpit design provides an authentic sports car feel. The meticulous fit and finish, and the quality of the materials – including laminated front door glass – contribute to a remarkably quiet ride. As for the comfort, it is nothing short of luxurious, particularly inside LTZ models that feature heated, two-tone leather-appointed seating surfaces with a power eight-way driver's seat and power six-way front-passenger seat. The results are, in a word, stunning.

Malibu's designers maximized space with features like the auxiliary storage bin located on the top of the centre stack. It provides an ideal location for items like CDs and cell phones.



Malibu LTZ interior, shown with Ebony/Brick two-tone leather-appointed seating surfaces with tipped leather inserts and accent piping.

GO INTERACTIVE.

The more natural the interaction between you and your car, the more satisfying the driving experience. Malibu's stylish and thoughtfully equipped driver's environment enables you to operate controls intuitively. Take the six-speed automatic transmission on LT and LTZ models - it includes steering wheel shift paddles. In addition, steering wheel-mounted sound system controls are included on all but LS models, so you can control Malibu's sound system from your iPod® without taking your hands off the wheel. And for 2009, available Bluetooth® wireless connectivity makes your cell phone use safer and more convenient. So go ahead and interact - in Malibu.

“Curving dashboard sections for the driver and passenger... similar to the Corvettes of old!”

- Road & Track, March 2007

*Available in 10 Canadian provinces and the 48 contiguous United States. Monthly subscription sold separately after 3 trial months.

A The newly available Bluetooth wireless connectivity enables you to answer and end calls without touching your compatible cell phone, using the steering wheel-mounted sound system controls.

B Malibu's centre stack not only offers a distinctive look, it also houses such available premium features as the automatic electronic climate control and the 130 channels offered through XM Satellite Radio™.*



Malibu LTZ driver's environment, shown with Cocoa/Cashmere two-tone leather-appointed seating surfaces with tipped leather inserts and accent piping.

IT'S MORE THAN LUXURIOUS – IT'S ULTRALUX.

Malibu is offered in a series of distinct models and trim levels to enable you to select the array of features that are important to you. If you move up to the 2LT, you get the bolder styling of the 17-inch aluminum wheels, the increased convenience of a remote vehicle starter system and an auto-dimming interior rear-view mirror with compass. Meanwhile, the interior is given a luxurious treatment with heated UltraLux™ Sheer Suede appointed front bucket seats. The car you want – the way you want it: Malibu.

A The Driver Information Centre is standard on all Malibu models. It displays up to 34 different vehicle function messages, including the GM Oil Life Monitoring System and 10 driver personalization settings.

B UltraLux Sheer Suede seating surfaces contribute to the premium interior environment of Malibu 2LT. For added comfort 2LT's front seats are heated and the driver's seat features a power 6-way adjuster.



Malibu 1LT, shown in Black Granite Metallic (extra cost option).

“IN ANYONE’S ESTIMATION THE BEST CHEVROLET EVER BUILT...”

– David Booth, *National Post*, November 2007

Technology isn’t an end unto itself – it is a means of solving practical problems. That’s why there are a series of engine and transmission combinations available. The standard engine is the 169 horsepower 2.4L ECOTEC. It features Variable Valve Timing (VVT) that contributes to Malibu’s impressive fuel efficiency: Malibu 2LT and LTZ earned 5.9 L/100 km highway and 9.4 L/100 km city ratings.* For the best fuel efficiency, of course, there’s the Malibu Hybrid with its combination of the ECOTEC gasoline engine and GM’s Hybrid Propulsion System. For added power, the 252 horsepower 3.6L V6 with VVT is available on LTZ models. The engines aren’t only powerful and efficient, they are also quiet, thanks to acoustic engine covers and hydraulic ride bushings. Built with care and purpose: the 2009 Chevrolet Malibu.

*When equipped with 2.4L engine and 6-speed automatic transmission, based on GM Testing in accordance with Transport Canada approved test methods. Your actual fuel consumption may vary.



HYBRID

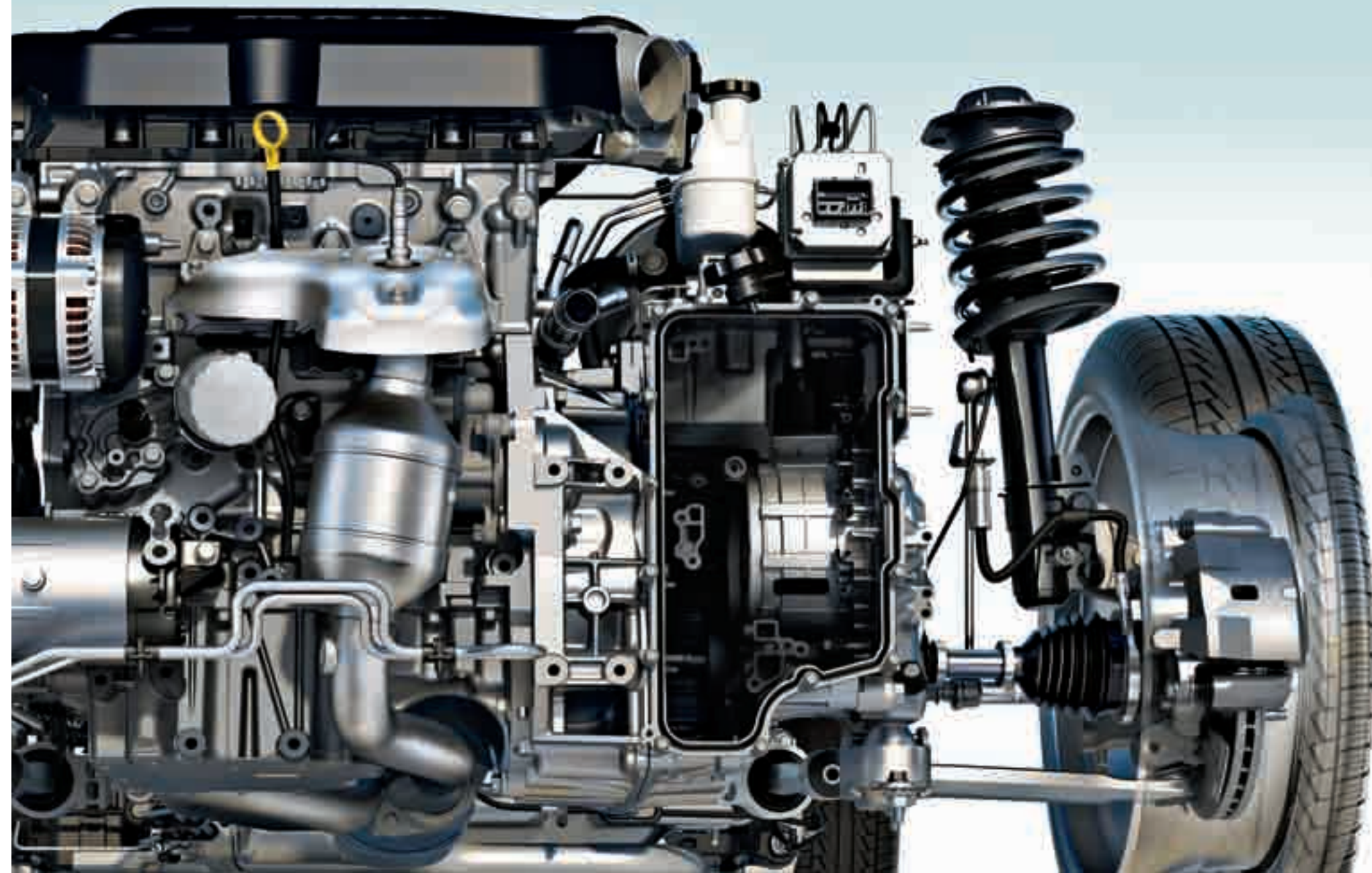


FUEL EFFICIENCY

A The 6-speed automatic transmission features TAPshift™ manual shift control that combines the benefits of manual and automatic transmissions. Using the shift paddles mounted on the steering wheel, you can select a gear, tailored to your driving preferences or road conditions.



B The 6-speed automatic transmission offers a wide spread in gear ratios. A steep first gear enhances launch performance, while the tall overdrive sixth gear reduces noise, vibration and fuel consumption.



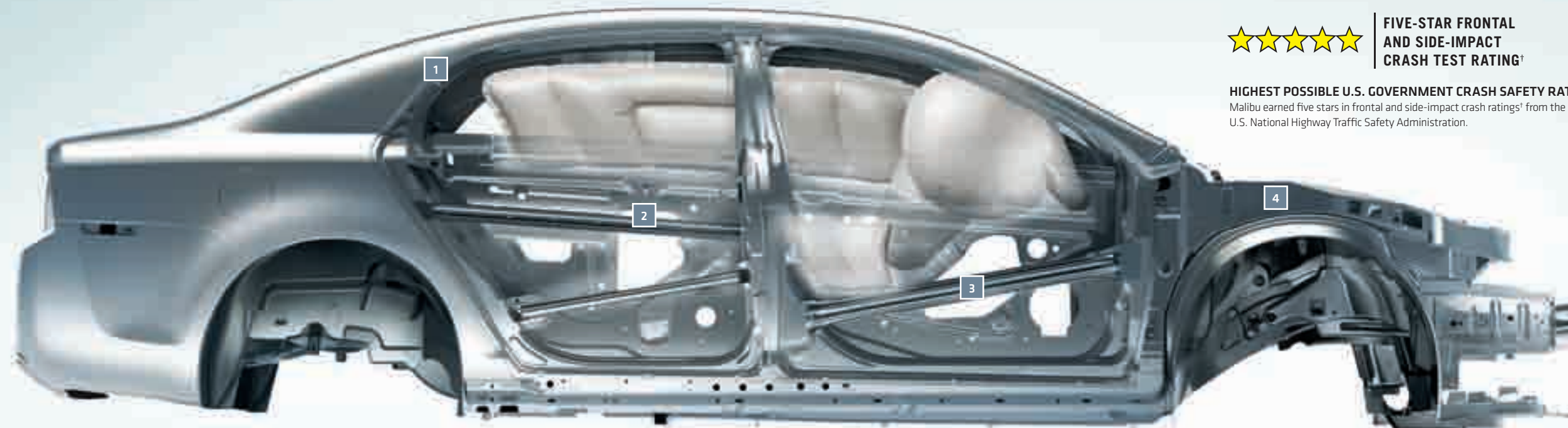
FIVE STARS. SIX AIR BAGS. YOU GET THE PICTURE.

To help avoid a collision, Malibu is equipped with sophisticated driver control features like the StabiliTrak electronic stability control system that automatically intervenes in thousandths of a second to counter understeer or oversteer. If an accident proves unavoidable, the standard OnStar®* system can direct emergency service providers to your exact location. And there are six standard air bags** to protect you and your passengers: dual-stage frontal air bags with a Passenger Sensing System, front-seat-mounted thorax side-impact air bags, and front-to-rear head curtain side-impact air bags. You can take added reassurance from the fact that Malibu earned the highest U.S. government frontal and side-impact crash ratings – five stars.† A clear focus on safety. Malibu.

*OnStar services require vehicle electrical system (including battery), wireless service and GPS satellite signals to be available and operating for features to function properly. OnStar acts as a link to existing emergency service providers. Subscription Service Agreement required. Call 1-888-4ONSTAR (1-888-466-7827) or visit onstar.ca for OnStar's Terms and Conditions, Privacy Statement and details and system limitations.

**A NOTE ON CHILD SAFETY: Always use safety belts and proper child restraints, even in vehicles equipped with air bags. Even with the Passenger Sensing System, children are safer when properly secured in a rear seat. Refer to the Malibu Owner's Manual and child safety seat instructions for more information.

†Five-star rating is for the driver and front-passenger seating positions in the frontal crash test, and for the front and rear seating positions in the side-impact crash test. Model tested with standard side-impact air bags. U.S. government star ratings are part of the National Highway Traffic Safety Administration's (NHTSA's) New Car Assessment Program (NCAP) (safercar.gov).



FIVE-STAR FRONTAL AND SIDE-IMPACT CRASH TEST RATING†

HIGHEST POSSIBLE U.S. GOVERNMENT CRASH SAFETY RATING

Malibu earned five stars in frontal and side-impact crash ratings† from the U.S. National Highway Traffic Safety Administration.



TURN-BY-TURN NAVIGATION

OnStar and 1 year of the Directions & Connections® Plan are standard on all Malibu models. The plan includes Turn-by-Turn Navigation†† – perhaps the smartest and simplest navigation system out there. All you do is press the OnStar button and state your destination to an Advisor. You then receive automated voice instructions that lead you right to your next destination – turn by turn.

††Turn-by-Turn Navigation not available in certain areas. Availability impacted by some geographical/cellular limitations. Advisor-assisted routing available. Visit onstar.ca for coverage map.

1. SAFETY CAGE

The safety cage helps reduce deformation of the frame in the event of a collision. The cage surrounds the passenger compartment from the windshield pillar to the backglass pillar, and from the roof rail to the rocker.

2. LOWER DOOR-TO-DOOR INTERLOCK

It helps prevent the rear door from intruding into the passenger compartment during an impact.

3. SIDE INTRUSION BEAM

A tubular side intrusion beam fabricated from high-strength boron steel helps protect passengers during side impacts. It is diagonally positioned on the front doors.

4. FRONT FRAME

It helps absorb crash energy in a controlled manner, reducing the force of an impact before it reaches the passenger compartment.

ONSTAR

OnStar* uses advanced communications technology to enhance your safety, security and convenience.

OnStar Advisors can provide a wealth of information and perform a variety of diagnostic services. They can also provide assistance in an emergency. No wonder more than 5 million people have become OnStar subscribers and over 29 million calls are made each year on the built-in voice-activated, hands-free system. OnStar and 1 year of the Directions and Connections Plan are standard on all Malibu models. See your dealer for more information on plans and services.



XM SATELLITE RADIO

What's convinced more than 9 million people to subscribe to XM Satellite Radio? How about the largest playlist on the planet, with musical genres that span everything from decades to dance, rock to rap and country to classical – broadcasting the most commercial-free music in digital quality sound? Or is it the news, talk, comedy and sports channels – including more than 1000 NHL games – and all available from coast to coast?‡ Now with 130 channels to enjoy, XM has revolutionized radio as we know it. XM Satellite Radio is standard on Malibu LTZ and Hybrid and is available on other models. Ask your dealer for more information.



‡Available in 10 Canadian provinces and the 48 contiguous United States. Monthly subscription sold separately after 3 trial months.

MALIBU MODEL OVERVIEW

MALIBU LS

Malibu LS is well equipped with these standard features:

- 169 hp 2.4L ECOTEC 4-cylinder dual overhead cam engine with variable valve timing
- GM Oil Life Monitoring System
- 4-speed automatic transmission
- Engineered for flat towing behind an RV
- 4-wheel disc brakes with ABS
- StabiliTrak electronic stability control system with panic brake assist
- Traction control
- 17-in. fascia-spoke chrome-finish wheels
- Power exterior mirrors
- Remote keyless entry system
- Six standard air bags
- Front bucket seats with power driver height adjuster and manual lumbar adjuster
- Driver Information Centre
- Air conditioning
- Power windows and door locks
- Cruise control
- Premium 6-speaker sound system with CD player and auxiliary audio input jack
- Auxiliary 12-volt outlet in the centre stack
- OnStar with 1 year of the Directions & Connections Plan

MALIBU 1LT

Malibu 1LT enhances the LS features with:

- Chrome exhaust tip
- Body-coloured exterior mirrors
- Steering wheel-mounted sound system controls
- MP3 playback, auto tone control and speed-compensated volume control

MALIBU 2LT

Malibu 2LT enhances the 1LT features with:

- 6-speed automatic transmission with TAPshift manual shift control
- 17-in. bright aluminum wheels
- Remote vehicle starter system
- UltraLux Sheer Suede seating surfaces
- Heated front bucket seats
- Power 6-way driver's seat adjuster
- Leather-wrapped steering wheel and shifter
- Auto-dimming interior rear-view mirror with compass
- Universal home remote transmitter
- XM Satellite Radio

MALIBU LTZ

Malibu LTZ enhances 2LT features with:

- 18-in. 10-spoke bright aluminum wheels
- Fog lights
- Heated auto-dimming driver-side exterior mirror
- LED tail lights
- Heated front bucket seats with two-tone leather-appointed seating surfaces
- Power 8-way driver's seat adjuster
- Power 6-way front-passenger seat adjuster
- Automatic electronic climate control
- Premium instrument cluster
- 210-watt enhanced 8-speaker sound system with in-dash 6-disc CD changer and MP3 playback

MALIBU HYBRID*

Highlights of the Malibu Hybrid include:

- Gasoline-powered 164 hp 2.4L ECOTEC 4-cylinder engine with variable valve timing
- GM Hybrid Propulsion Electric System
- 17-in. aluminum wheels
- Charge/Assist gauge, Eco light and Auto Stop indicator
- Automatic electronic climate control
- XM Satellite Radio

*Limited availability



INTRODUCING THE [YOUR NAME GOES HERE] MODEL.

Malibu appeals to your individuality. You can make your Malibu into one that is yours alone with the addition of Chevrolet Accessories. They not only add style and functionality, they are also the only accessories that are integrated into the process of designing your vehicle, ensuring that they look right and work right on your Malibu. And only Chevrolet Accessories are backed by the 3-year/60,000 km New Vehicle Limited Warranty.* They can also be included in your new-vehicle finance agreement through GMAC. Ask your dealer for a complete list of the Chevrolet Accessories available for Malibu, or visit gm.ca

*Whichever comes first, when permanently installed by the dealer at the time you purchase your new vehicle.

Chevrolet Accessories available for Malibu include:

- Head restraint DVD player
- 17-in. forged polished wheel
- 18-in. 7-spoke cast chrome wheel
- 2-way advance remote start.



ACCESSORIES



ADDED CONFIDENCE.

Every Chevrolet is built to a rigorous standard of quality and is backed by the best coverage in Canada:

- 3-year/60,000 km New Vehicle Limited Warranty*
- 5-year/160,000 km Powertrain Component Limited Warranty, with \$0 deductible on repairs and the warranty is fully transferable at no charge*
- 5-year/160,000 km Courtesy Transportation*
- 5-year/160,000 km 24/7 Roadside Assistance*
- 6-year/160,000 km rust-through perforation coverage*
- 8-year/160,000 km coverage on catalytic converters and powertrain control modules (PCMs)*
- 8-year/160,000 km coverage on specific hybrid components on the Malibu Hybrid model.*

*Whichever comes first. Conditions and limitations apply. See dealer for details.

OTHER OWNERSHIP PRIVILEGES AND PROGRAMS:¹

- **GM Protection Plan (GMPP)** – the only extended service plan backed by the resources and commitment of General Motors, GMPP may be purchased at the time of sale or subsequently during the New Vehicle Limited Warranty period
- **GM Goodwrench Service** – with GM-certified technicians and GM-approved parts, nobody knows your GM vehicle better.

¹Conditions and limitations apply.

TO HELP YOU PURCHASE A NEW VEHICLE:

- **GMAC Express Credit Application** – a convenient way to get pre-approved credit towards the purchase of your next GM vehicle
- **GMAC Purchase Financing** – on the spot financing at your GM dealership¹¹
- **GM Student Bonus Program** – GM will cover the first two purchase finance payments on eligible new GM vehicles for students and recent graduates of high school, college or university¹²
- **The GM Card** – eligible cardholders may be able to redeem up to \$3500 on GM Card® Earnings toward the Total Purchase Price on selected vehicles. For more information on The GM Card please call 1-800-461-3279¹³

¹¹Conditions and limitations apply. ¹²Subject to eligibility.

INFORMATION RESOURCES:

You can find more information about these programs from your GM dealer, or at these information centres:

- The GM website at gm.ca
- The GM Customer Communication Marketing Centre at **1-800-GM-DRIVE (1-800-463-7483 or 1-800-263-3830** for TDD users)
- For information about GMAC visit gmac.ca or call **1-800-616-4622**.

A WORD ABOUT THIS BROCHURE

Some of the equipment shown or described throughout this brochure may be available at extra cost. We have tried to make this brochure comprehensive and factual. We reserve the right, however, to make changes at any time, without notice, in prices, colours, materials, equipment, specifications, models and availability. Specifications, dimensions, measurements, ratings and other numbers in this brochure and other printed materials provided at the dealership or affixed to vehicles are approximates based upon design and engineering drawings and prototypes and laboratory tests. Your vehicle may differ due to variations in manufacture and equipment. Since some information may have been adapted since the time of the printing, please check with your GM dealer for complete details. General Motors of Canada Limited reserves the right to lengthen or shorten the model year for any product, for any reason, or to start and end model years at different times.

A WORD ABOUT ASSEMBLY

GM vehicles are equipped with engines and components produced and assembled by different operating units of General Motors, its subsidiaries and suppliers and these engines and components may change or be obtained from different sources from time to time. All such engines and components are approved for use in GM vehicles. Certain equipment ordered may be unavailable at the time of assembly and we suggest that you verify that your vehicle includes the equipment you ordered, or if there are changes, that they are acceptable to you.

TRADEMARKS

The marks appearing in this brochure including, but not limited to: General Motors, GM, the GM emblem, the GM Canada website address, Chevrolet, the Chevrolet emblem, Malibu and their respective logos, emblems, slogans and vehicle model names and body designs; and other marks such as ECOTEC, Solar-Ray, StabiliTrak and UltraLux are trademarks of General Motors Corporation and/or General Motors of Canada Limited, its subsidiaries, affiliates or licensors.

GMAC is a registered trademark of the General Motors Acceptance Corporation of Canada, Limited.

OnStar and the OnStar emblem are registered trademarks of the OnStar Corporation.

TheftLock is a registered trademark of Delphi Automotive Systems Inc.

Apple and iPod are trademarks of Apple Computer, Inc., registered in the U.S. and other countries.

Radio Data System (RDS) is a registered trademark of the U.S. National Association of Broadcasters.

The XM name and related logos are trademarks of XM Canada, Canadian Satellite Radio Inc.

Bluetooth is a registered trademark of Bluetooth SIG Inc.

COPYRIGHT

©Copyright 2008 General Motors of Canada Limited. All Rights Reserved. All text, images, graphics, and other materials in this brochure are subject to the copyright and other intellectual property rights of General Motors Corporation and/or General Motors of Canada Limited. These materials may not be reproduced, distributed or modified without the express written permission of General Motors Corporation and/or General Motors of Canada Limited.

Printed in Canada, August 2008.



2009 MALIBU STANDARD & OPTIONAL FEATURES

SAFETY AND SECURITY	LS	1LT	2LT	LTZ	HYBRID [†]
Air bags – dual-stage, driver and front-passenger, frontal with Passenger Sensing System	S	S	S	S	S
Air bags – front-to-rear, side-impact head curtain	S	S	S	S	S
Air bags – driver and front-passenger, seat-mounted side-impact	S	S	S	S	S
Brake/transmission shift interlock	S	S	S	S	S
Door locks – power, programmable with lock-out protection	S	S	S	S	S
Headlights – Daytime Running Lights with automatic light control	S	S	S	S	S
Keyless entry system – remote	S	S	S	S	S
OnStar In-Vehicle Communications and Assistance Service – includes 1 year of the Directions & Connections Plan* with Turn-by-Turn Navigation**	S	S	S	S	S
Safety restraints – LATCH (Lower Anchors and top Tethers for Children), rear seats	S	S	S	S	S
StabiliTrak – electronic stability control system	S	S	S	S	S
Theft-deterrent system – electronic immobilizer	S	S	S	S	S
Traction control – electronic, full-function, all-speed	S	S	S	S	S

MECHANICAL	LS	1LT	2LT	LTZ	HYBRID [†]
Battery – with run-down protection	S	S	S	S	S
Brakes – power, 4-wheel disc	S	S	S	S	S
Brakes – 4-wheel anti-lock braking system (ABS)	S	S	S	S	S
Drive – front-wheel	S	S	S	S	S
Engine – 2.4L ECOTEC I-4 VVT Hybrid Horsepower – 164 @ 6400 rpm; Torque – 159 lb.-ft. @ 5000 rpm	–	–	–	–	S
Engine – 2.4L ECOTEC I-4 VVT with SFI Horsepower – 169 @ 6400 rpm; Torque – 160 lb.-ft. @ 4500 rpm	S	S	S	S	–
Engine – 3.6L V6 VVT with SFI Horsepower – 252 @ 6300 rpm; Torque – 251 lb.-ft. @ 3200 rpm	–	–	0 ¹	0 ²	–
Engine – block heater	0	0	0	0	0
Exhaust system – aluminized stainless steel	S	S	S	S	S
Exhaust system – single chrome tip	–	S	S	S	S
Exhaust system – dual chrome tips	–	–	0 ¹	0 ²	–
GM Hybrid Propulsion Electric System – includes 36-volt nickel-metal hydride battery and tray	–	–	–	–	S
Steering – electric power, variable-effort, rack-and-pinion	S	S	S	S	S
Steering – power, rack-and-pinion, hydraulic assist	–	–	0 ¹	0 ²	–
Suspension – 4-wheel independent	S	S	S	S	S
Transmission – Hybrid 4-speed automatic	–	–	–	–	S
Transmission – 4-speed automatic with overdrive	S	S	–	–	–
Transmission – 6-speed automatic with TAPshift manual shift control	–	0	S	S	–
Vehicle starter system – remote	–	0 ³	S	S	–
LT Performance Package – includes 3.6L V6 VVT engine, 6-speed automatic transmission with TAPshift manual shift control, dual chrome tip exhaust, 18" x 7" bright aluminum wheels (C) with P225/50R18 all-season touring tires, [†] hydraulic power steering and XM Satellite Radio ^{††}	–	–	0	–	–
Ltz Performance Package – includes 3.6L V6 VVT engine, 6-speed automatic transmission with TAPshift manual shift control, hydraulic power steering and dual chrome tip exhaust	–	–	–	0	–

EXTERIOR	LS	1LT	2LT	Ltz	HYBRID [†]
Fog lights – projector beam	–	–	–	S	–
Glass – Solar-Ray®, tinted with acoustic windshield and front doors	S	S	S	S	S
Grille – black with bright surround	S	S	S	–	S
Grille – sterling silver painted mesh with bright surround	–	–	–	S	–
Mirrors – power remote control, black	S	–	–	–	–
Mirrors – power remote control, body-colour	–	S	S	S	S
Mirror – driver-side with heated and electrochromic auto-dimming feature	–	–	–	S	–
Mouldings – bodyside, body-colour	0	0	0	–	–
Mouldings – bright chrome window surround with body-colour rockers	S	–	–	–	–
Mouldings – bright chrome window surround and body-colour rockers with chrome insert	–	S	S	S	S
Sunroof – power, sliding glass panel, express-open feature	–	0	0	0	0
Tail lights – LED	–	–	–	S	–
Tires – P215/55R17 all-season touring [†]	S	S	S	–	S
Tires – P225/50R18 all-season touring [†]	–	–	0 ¹	S	–
Wheels – 17" x 7" fascia-spoke painted sterling silver finish (A)	S	–	–	–	–
Wheels – 17" x 7" fascia-spoke chrome-finish (A)	–	S	–	–	–
Wheels – 17" X 7" bright aluminum (B)	–	0	S	–	S
Wheels – 18" x 7" bright aluminum (C)	–	–	0 ¹	–	–
Wheels – 18" x 7" 10-spoke bright aluminum (D)	–	–	–	S	–
Windshield wipers – flat blade, speed-sensitive with variable delay (intermittent)	S	S	S	S	S

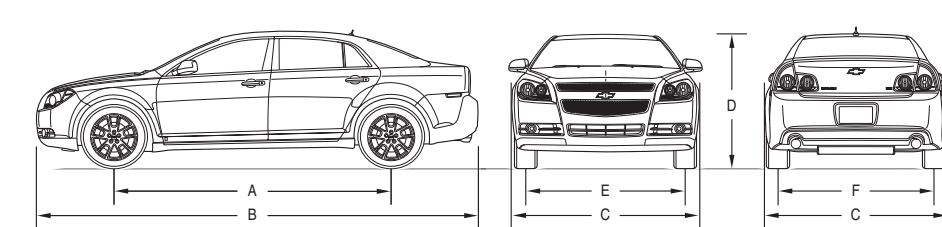
INTERIOR	LS	1LT	2LT	Ltz	HYBRID [†]
Air conditioning – manual	S	S	S	–	–
Air conditioning – automatic climate control	–	–	–	S	S
Auxiliary power outlet – 12-volt, dual	S	S	S	S	S
Cargo convenience net	–	0 ⁴	0 ⁴	S	–
Console – front floor with sliding armrest, storage, front and rear cupholders	S	S	S	S	S
Cruise control – steering wheel-mounted, electronic with resume, coast and decelerate/accelerate features	S	S	S	S	S
Defogger – electric rear-window	S	S	S	S	S
Floor mats – front and rear, carpeted	S	S	S	–	S
Floor mats – premium front and rear and trunk mat	–	0 ⁴	0 ⁴	S	–
Instrumentation – analogue gauges (includes speedometer, tachometer, coolant temperature and fuel gauge)	S	S	S	S	–
Instrumentation – Premium cluster appearance (metallic applique finish, bright centrepiece finish and winter blue illumination)	–	–	–	S	–
Instrumentation – analogue gauges (includes speedometer, tachometer and fuel gauge with Charge/Assist gauge, Eco light and Auto Stop indicator)	–	–	–	–	S
Instrumentation – Driver Information Centre (includes exterior temperature display, GM Oil Life Monitoring System, programmable features and message centre)	S	S	S	S	S
Instrumentation – tire pressure monitoring system	0	0	0	0	0
Lights – front courtesy and reading, illuminated entry/exit, delayed illumination and theatre dimming	S	S	S	S	S
Lights – accent, front console and interior door handles	S	S	S	S	S
Lights – dual rear reading	–	–	S	S	–
Mirror – rear-view, auto-dimming with compass	–	–	S	S	–
Power centre – rear, includes 110-volt outlet	–	0	0	0 ⁵	–

INTERIOR (Continued)	LS	1LT	2LT	Ltz	HYBRID [†]
Steering column – tilt and telescopic adjustable	S	S	S	S	S
Steering wheel – with sound system controls	–	S	–	–	S
Steering wheel – leather-wrapped with sound system controls and leather-wrapped shifter	–	–	S	S	–
Sunshades – LH and RH padded; non-illuminated vanity mirrors with extensions	S	S	–	–	S
Sunshades – LH and RH padded; illuminated driver and passenger vanity mirror with extensions	–	–	S	S	–
Sunshade – rear window, manual (includes rear power centre)	–	–	0	0	–
Trunk – release, power remote	S	S	S	S	S
Universal home remote – 3-channel transmitter	–	–	S	S	–
Windows – power, driver's express-down feature and rear-passenger window lock-out features	S	S	S ⁶	S ⁶	S
Convenience Package – includes power 6-way driver's seat adjuster and remote vehicle starter system	–	0	–	–	–
Cargo Management Package – includes premium floor mats, trunk mat and cargo convenience net	–	0	0	S	–

SEATS	LS	1LT	2LT	Ltz	HYBRID [†]
Reclining front bucket seats – with Custom cloth	S	S	–	–	S
Reclining front bucket seats – with UltraLux Sheer Suede seating surfaces	–	–	S	–	–
Reclining front bucket seats – with two-tone tipped leather-appointed seating surfaces with accent piping	–	–	–	S	–
Heated, driver and front-passenger seats	–	–	S	S	–
Power driver height adjuster	S	S	S	S	S
Power 6-way driver seat adjuster	–	0 ³	S	–	0
Power 8-way driver and power 6-way passenger seat adjuster	–	–	–	S	–
Manual 2-way driver lumbar adjuster	S	S	S	S	S
Seatback – rear, 60/40 split-folding	S	S	S	S	S

SOUND SYSTEMS	LS	1LT	2LT	Ltz	HYBRID [†]
All Malibu sound systems include an electronically tuned AM/FM stereo with seek up/down, scan, auxiliary audio input jack for iPod® or MP3 player, TheftLock® and digital clock					
AM/FM stereo with CD player	S	–	–	–	–
AM/FM stereo with CD player – with MP3 playback, auto tone control, speed-compensated volume control and Radio Data System® (RDS)	–	S	S	–	S
AM/FM stereo with in-dash 6-disc CD changer – MP3 playback, auto tone control, speed-compensated volume control and Radio Data System (RDS)	–	–	0 ⁷	S	–
Bluetooth – utilities vehicle sound system, microphone, voice recognition and controls with Bluetooth-enabled cell phones	–	–	0	0	–
XM Satellite Radio ^{††}	0	0	0	S	S
6-speaker premium sound system	S	S	S	–	S
8-speaker 210-watt enhanced sound system	–	–	0 ⁷	S	–
Premium Sound System Package – includes 8-speaker enhanced sound system with 210-watt amplifier, in-dash 6-disc CD changer, auto tone control, speed-compensated volume control, Radio Data System (RDS) and XM Satellite Radio ^{††}	–	–	0	–	–

DIMENSIONS



EXTERIOR, mm (in.)	
Wheelbase (A)	2852 (112.3)
Length (B)	4872 (191.8)
Width (C)	1786 (70.3)
Height (D)	1450 (57.1)
Front Tread (E)	1514 (59.6)
Rear Tread (F)	1524 (60.0)

INTERIOR, mm (in.) front/rear	
Headroom	1001/945 (39.4/37.2)
Legroom	1073/955 (42.2/37.6)
Shoulder room	1420/1369 (55.9/53.9)
Hip room	1345/1323 (53.0/52.1)

CAPACITIES/WEIGHT	
Trunk, L (cu. ft.)	428 (15.1) [†]
Fuel tank, L (imp. gal.)	61 (13.4)
Curb weight (est.), kg. (lb.)	1551 (3418) – LS 1561 (3442) – LT 1577 (3477) – LTZ 1604 (3536) – HYBRID

[†]Hybrid model has a cargo capacity of 381 L (13.5 cu. ft.).

TOWING

2.4L ECOTEC I-4 VVT 3.91 final drive ratio; 454 kg (1000 lb.) maximum gross trailer weight^{††}

2.4L ECOTEC I-4 VVT 2.89 final drive ratio; 454 kg (1000 lb.) maximum gross trailer weight^{††}

2.4L ECOTEC I-4 VVT Hybrid 3.63 final drive ratio; 454 kg (1000 lb.) maximum gross trailer weight^{††}

3.6L V6 VVT 2.77 final drive ratio; 454 kg (1000 lb.) maximum gross trailer weight^{††}

S – Standard.

0 – Optional individually or in combination with other optional equipment.

1 – Included with available LT Performance Package.

2 – Included with available LTZ Performance Package.

3 – Included with available Convenience Package.

4 – Included with available Cargo Management Package.

5 – Included with available rear-window shade.

6 – Includes driver's express-up and down feature.

7 – Included with available Premium Sound System Package.

* OnStar services require vehicle electrical system (including battery), wireless service and GPS satellite signals to be available and operating for features to function properly. Subscription Service Agreement required. Call 1-888-4ONSTAR (1-888-466-7827) or visit onstar.ca for OnStar's Terms and Conditions, Privacy Statement and details and system limitations.

** Turn-by-Turn Navigation not available in certain areas. Availability impacted by some geographical/cellular limitations, advisor assisted-routing available. Visit onstar.ca for coverage map.

[†] All-season tires may not satisfy winter tire requirements in all regions of the country. Tires specifically designed for severe winter conditions and marked with the "winter tire" symbol may be required during certain months or in certain regions. Contact your Provincial, Municipal or local road authority for information regarding which tires are required in your particular area.

^{††} Available in 10 Canadian provinces and the 48 contiguous United States. Monthly subscription sold separately after 3 trial months.

[‡] Limited availability.

^{†††} Includes weight of trailer, cargo, passengers and equipment. All towing recommendations are subject to change. Trailer tongue load should be 10% of the maximum trailer weight but should not exceed the load rating specified for that vehicle, engine or hitch combinations. See your dealer or refer to the Malibu Owner's Manual for details.

INTERIOR FABRICS



EBONY

Custom cloth seating areas, shown in Ebony with Ebony and brushed aluminum interior trim accents.



EBONY/BRICK

Two-tone leather-appointed seating surfaces with accent piping, shown in Ebony/Brick with Ebony, Brick and satin nickel interior trim accents and accent piping.



COCOA/CASHMERE

Two-tone leather-appointed seating surfaces with accent piping, shown in Cocoa/Cashmere with Cocoa, Cashmere and simulated woodgrain interior trim accents.



TITANIUM

Custom cloth seating areas, shown in Titanium with Dark Titanium, Light Titanium and brushed aluminum interior trim accents.



1LT ONLY CUSTOM CLOTH

19B – Ebony



LS/1LT/HYBRID CUSTOM CLOTH

34B – Cocoa/Cashmere



LS/1LT/HYBRID CUSTOM CLOTH

83B – Titanium

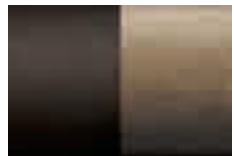


2LT ONLY ULTRALUX SHEER SUEDE SEATING SURFACES

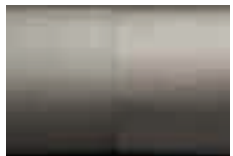
19C – Ebony



34C – Cocoa/Cashmere

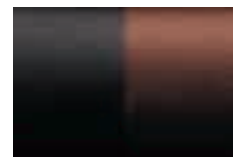


83C – Titanium

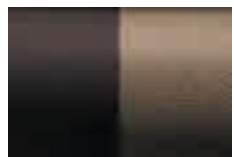


LTZ ONLY TWO-TONE TIPPED LEATHER-APPOINTED SEATING SURFACES

242 – Ebony/Brick



342 – Cocoa/Cashmere



EXTERIOR/INTERIOR COLOUR COMPATIBILITY

▼ Exterior	Interior ►	19 – Ebony ¹	24 – Ebony/Brick ²	34 – Cocoa/Cashmere	83 – Titanium ³
17 – Silver Ice Metallic		•	•		•
37 – Imperial Blue Metallic		•	•		•
50 – Summit White		•	•	•	•
51 – Gold Mist Metallic		•	•	•	•
58 – Black Granite Metallic*		•	•	•	•
75 – Dark Gray Metallic		•	•		•
78 – Golden Pewter Metallic		•	•	•	•
80 – Red Jewel Tintcoat* ⁴		•	•	•	•
92 – Silver Moss Metallic		•	•	•	•

*Available at extra cost. 1 – Available on LT only. 2 – Available on LTZ only. 3 – Not available on LTZ. 4 – Not available on LS.

EXTERIOR COLOURS



17 – Silver Ice Metallic



37 – Imperial Blue Metallic



58 – Black Granite Metallic*



80 – Red Jewel Tintcoat*⁴



50 – Summit White



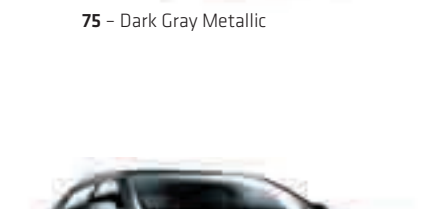
51 – Gold Mist Metallic



75 – Dark Gray Metallic



78 – Golden Pewter Metallic



92 – Silver Moss Metallic

WHEELS



A – 17" fascia-spoke painted sterling silver finish wheel standard on LS; chrome-finish wheel standard on 1LT

B – 17" bright aluminum wheel standard on Hybrid and 2LT; available on 1LT

C – 18" bright aluminum wheel available on LTZ

D – 18" 10-spoke bright aluminum wheel standard on LTZ

The exterior colours in this brochure are as close to the actual vehicle production colours as the printing process allows. For more accurate colour samples, ask your sales consultant to see the dealer showroom vehicle colour display.