



Mercedes-Benz

The 2009 **E-Class** AVANTGARDE Edition & E63 AMG





## The E-Class

<b>INTRODUCTION</b>	2
<b>AVANTGARDE EDITION</b>	4
<b>SAFETY</b>	10
<b>COMFORT</b>	12
Entertainment	14
<b>DYNAMICS</b>	
BlueTEC diesel	16
Engines	18
<b>4MATIC™</b>	20
<b>WAGON</b>	22
<b>PERFORMANCE</b>	
E63 AMG	24
<b>COLOURS AND MATERIALS</b>	
Paint, combination options	26
Upholstery and trim	28
<b>EQUIPMENT</b>	
Equipment listing	30
Accessories	32
<b>TECHNICAL FEATURES</b>	
Technical data	34
<b>MERCEDES-BENZ OWNERSHIP AND WEBSITE</b>	35
<b>TEST DRIVE</b>	36

## Summing up Mercedes-Benz in one letter.

For over 60 years, the letter E has been synonymous with comfort, safety and elegance. It is a tradition that the 2009 E-Class AVANTGARDE Edition is proud to continue. As always, the driving experience is sublime with a wide range of exciting engines complemented by our intelligent transmission and suspension systems.

What has changed dramatically is that now, in addition to its superb poise and performance, the E-Class AVANTGARDE Edition comes fully enhanced with an abundant suite of premium extras for you to enjoy – all at no additional cost. Revel in upgraded entertainment features, hard-drive based navigation and more – now standard on all models.

You would have to go a long way to find an automobile that offered more. Now that the E-Class AVANTGARDE Edition comes standard with all these extras there's no need to.

When it comes to automotive excellence, look no further than the letter E.









## Perfection has never been more attainable.

Ravishing looks. Exquisite comfort. Adrenalin-inducing performance. Unparalleled attention to detail. No matter which E-Class AVANTGARDE Edition model you choose, these enticing premium extras are now included, giving you even more true value and enjoyment. COMAND APS with hard-drive based navigation, LINGUATRONIC voice control and DVD changer combines navigation, audio and telephone into one intuitive design. There's no need to change navigation DVDs thanks to an internal hard-drive storage system. With the Media Interface you get 3 different connection cables: one for your iPod®, a USB input for memory sticks and the auxiliary audio input. You also get 100 premium channels of SIRIUS Satellite Radio! PARKTRONIC<sup>2</sup> makes manoeuvring in and out of tight spots easier with warnings that notify you of how close you are to a detected obstacle. Plus, each model features its own set of additional luxuries for those who recognize the 2009 E-Class AVANTGARDE Edition as an exceptional opportunity.



© 2008 SIRIUS Satellite Radio Inc. "SIRIUS", the SIRIUS dog logo and related marks are trademarks of SIRIUS Satellite Radio Inc. Complimentary 6 months of service included. Monthly subscription required for service thereafter. <sup>2</sup>Not available on the E350 4MATIC™ Wagon.

## Add that little extra to your lifestyle.

What truly makes the 2009 E-Class AVANTGARDE Edition a premium choice are the wide array of sophisticated no charge extras that define each different model. Whether it's upgraded interior appointments, additional comfort or exterior styling enhancements it can all be summed up in two words. Unapologetic luxury.

### **E300 4MATIC™ AVANTGARDE Edition**

The integrated garage door opener, permanently integrated within the vehicle interior, is able to learn the radio frequencies of practically any hand-held transmitter. For your added convenience, the electronic trunk closure enables you to open and close the trunk almost effortlessly.

18" 10-twin-spoke wheels with all-season tires offer more than simply head-turning great looks – they help you take on the road, then conquer it. Bi-Xenon headlamps with active light function improve road illumination on bends by up to 90%, while cornering lights allow you to recognize and respond to road contours more easily, giving you better visibility on curves and providing you with enhanced safety at crossroad and junctions.

### **E320 BlueTEC AVANTGARDE Edition**

For your added safety, you'll experience superior visibility regardless of weather or season, with the Active Bi-Xenon headlamps that turn night into day. You'll also notice significantly improved illumination when you are turning with cornering lights that help to identify pedestrians and potential obstacles much earlier – making these already superior headlamps better still. And to top it all off, washers with extendable high-pressure nozzles keep the headlamps clean, even when the car is in motion. For everyone's comfort, the rear window sunshade can be extended across the back window electronically to protect your vehicle's interior and backseat passengers from direct sunlight. From a purely functional standpoint, you'll also appreciate the everyday usefulness of the electronic trunk closure, which makes opening and shutting the trunk a breeze.

### **E350 4MATIC™ Sedan AVANTGARDE Edition**

The AMG Styling Package gives you a sportier look with AMG body styling on the front and rear apron, AMG style tailpipes and AMG lightweight alloy wheels. Heated rear seats and an electronic rear window sunshade keep everyone in luxurious comfort. Opening or closing the trunk is effortless, courtesy of the electronic trunk closure.





### **E350 4MATIC™ Wagon AVANTGARDE Edition**

Heated rear seats and door-integrated roller blinds for rear side windows ensure your passengers travel in luxurious comfort the whole year round. Frequently carry big loads? The EASY-PACK Load Securing Kit with two cargo rails secured to the load floor on the left and right are designed to hold whatever you are transporting safely and securely.

### **E550 4MATIC™ AVANTGARDE Edition**

Multicontour driver's seat and passenger's seats feature dynamic side bolsters on the seat cushion and the backrests inflate and deflate automatically, keeping you firmly in your seat even on the tightest curves and preventing potential back muscle fatigue. For your enhanced comfort, these seats also enable you to enjoy a massage function, with seven massage chambers and four different program settings. Optimal front seat climate controls enable you to heat and ventilate each seat independently, making comfort adjustments on individual seat adjustments a breeze. The electronic rear window sunshade and heated rear seats ensure your passengers total comfort throughout the four seasons, while the panoramic sunroof gives you an almost unobstructed view of the sky. Electronic trunk closure makes opening and shutting the trunk almost effortless. KEYLESS-GO enables you to lock, unlock, start and stop your automobile without the bother of having to remove the key from your pocket. Also standard is the AMG Styling Package, giving you a sportier look with AMG body styling on the front and rear apron, AMG style tailpipes and AMG lightweight alloy wheels.





### **IN AN ACCIDENT**

In 1959, we developed the world's first passenger safety cell. Today we are still building one of the sturdiest passenger cells around: the E-Class.



### **SAFER DRIVING**

Our Electronic Stability Program (ESP®) can dramatically enhance cornering control by monitoring your steering and braking actions and responding nearly instantaneously if it detects oversteer or understeer.

### **IN THE EVENT OF DANGER**

Some hazards can appear without warning. Luckily there are safety systems that are even faster, such as reversible belt tensioners.

## AFTER AN ACCIDENT

The E-Class continues to provide protection even after an accident occurs. This includes automatic fuel cut-off and other features that help to speed and facilitate occupant rescue.

The NECK-PRO front head restraints are sensor-controlled.



## Be ready for the unexpected.

Mercedes-Benz is the first and only automaker to offer built-in technology to help you drive safer and protect you both in the event of danger and after an accident.

This technology is made up of active safety features like the “control and display” concept, which minimizes distractions from what is happening on the road. It also includes systems that provide support in critical situations and alert the driver to potential hazards – such as our Electronic Stability Program (ESP®) and integrated Brake Assist (BAS) system!

The technology activates in the event of danger, anytime evasive steering manoeuvres are detected, and takes precautionary measures to reduce the risk of injury to occupants. And this truly visionary thinking doesn't end there. Thanks to Active Bi-Xenon headlamps, you can now detect obstacles earlier than was previously possible.

Should an accident be unavoidable, this advanced technology is quick to react, offering protection for your own vehicle and for others, including a high-strength safety cell, adaptive front air bags, side-impact air bags, head protection curtains, the crash responsive NECK-PRO head restraints, and more. This built-in technology also includes measures that help to prevent the situation from deteriorating after an accident.

\*No system, regardless of how advanced, can overcome the laws of physics or correct careless driving. Please always wear your seat belt. Best performance in snow is obtained with winter tires. <sup>2</sup>WARNING: The forces of a deploying air bag can cause serious or fatal injuries to a child under age 13. Children under 13 should be seated in the back seat if possible. See Operator's Manual for additional warnings and information on air bags, seat belts and child seats.





## Comfort can take you anywhere.

When it comes to making you feel at ease, the E-Class has few rivals.

Standard 10-way power adjustment for the heated front seats and manually adjustable lumbar support for the driver's seat allow the ideal seat position to be found. Climate Comfort seats<sup>1</sup> are available for you and your front passenger, featuring three-stage heating, active ventilation to cool the seat surfaces and individually adjustable luxury head restraints. The rear seats are also heated<sup>2</sup> to ensure that everybody travels in perfect comfort. And, for your added relaxation, the THERMATIC automatic climate control system allows front seat occupants to select temperature levels to suit their own individual requirements.

Luxurious ARTICO<sup>3</sup> leather ensures that you will revel in customized splendour. Sit back and cradle yourself in the comfort of sport leather available on the E550 4MATIC<sup>TM</sup> and E350 4MATIC<sup>TM</sup>. The AMG Nappa leather upholstery featured on the E63 AMG is particularly sumptuous. Black Bird's Eye Maple enhances all the lavish leather interiors of the E-Class, while a heated steering wheel<sup>4</sup> is the perfect finishing touch.

<sup>1</sup>Standard on the E550 4MATIC<sup>TM</sup>. Available as part of an option package on the E63 AMG. Not available on the E300 4MATIC<sup>TM</sup>, E320 BlueTEC and E350 4MATIC<sup>TM</sup> models. <sup>2</sup>Standard on the E350 4MATIC<sup>TM</sup> models and E550 4MATIC<sup>TM</sup>. Available as part of an option package on the E63 AMG. Not available on the E300 4MATIC<sup>TM</sup> and E320 BlueTEC. <sup>3</sup>Man-made leather. <sup>4</sup>Not available on the E350 4MATIC<sup>TM</sup> Sedan, E550 4MATIC<sup>TM</sup> and E63 AMG.

## You will be entertained.

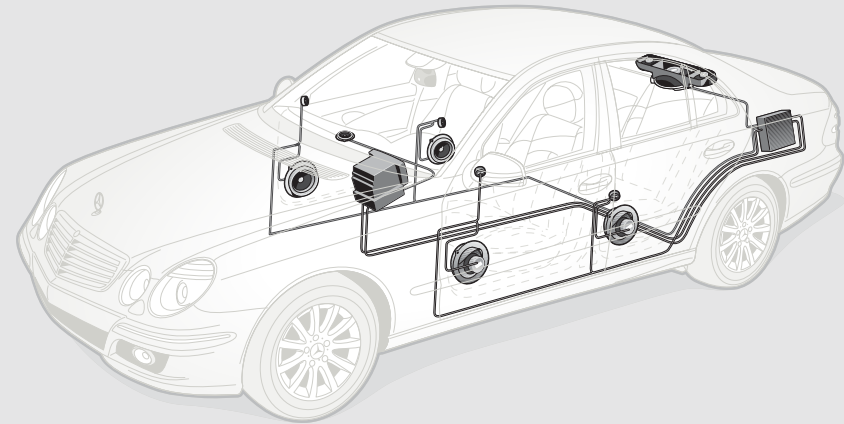
The E-Class takes entertainment to the same level as it takes comfort and driving enjoyment.

Listening to your favourite music in the E-Class becomes a truly outstanding sensory experience thanks to the premium harman/kardon® LOGIC7® surround sound system, featuring 12 loudspeakers, 510-watts of power, a 9-channel Digital Sound Processing (DSP) amplifier and a 6-disc DVD changer. This system, which is specially matched to the interior acoustics of the vehicle, allows all occupants to enjoy amazingly realistic and breathtakingly precise sound quality, wherever they happen to be sitting. You're certain to appreciate the standard Media Interface, which gives you 3 different connection cables – one for your iPod®, a USB input for memory sticks and the auxiliary audio input. Also included with this outstanding system are 100 premium channels of SIRIUS Satellite Radio!

All E-Class models also come standard with the COMAND control and display system so all customizable systems are at your fingertips. All functions are controlled on a large colour display. A state-of-the-art TFT screen technology results in excellent brilliance and colour rendering. For even more command when behind the wheel, our E-Class automobiles feature our COMAND APS hard-drive based navigation system as standard, keeping you on course at all times.

Rounding things off are standard Bluetooth and cell phone integration, allowing you to enjoy safe, hands-free use while driving.

Mercedes-Benz is the only car maker in the world that investigates the medical and psychological aspects of driving. This has led to the development of assistance systems that make driving safer and more enjoyable. Such systems include DISTRONIC<sup>2</sup> proximity control and LINGUATRONIC voice control, both of which make for relaxed, stress-free driving.







01:38

Navi Audio Phone Video System

All channels: Channel 72

PureJazz

SIRIUS

40 80 120 160 200 240 CH

Artist: Song Title

SatRadio Presets Info Category Sound

1 CD 2 ABC 3 DEF

4 GHI 5 JKL 6 MNO

7 PQRS 8 TUV 9 WXYZ

+ - 0 L R

BACK CLR

OK

OFF

REAR TEMP

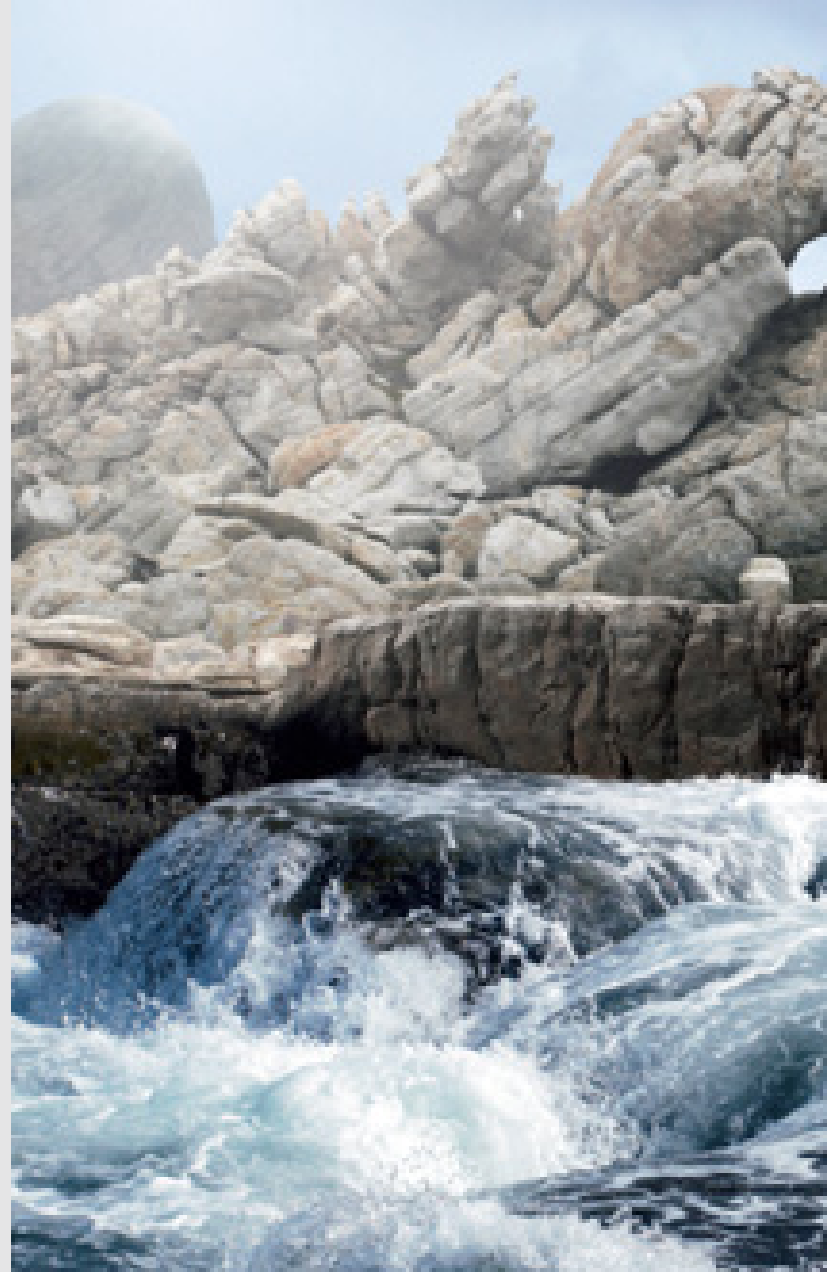
A/C

## “The future of Diesel is BLUE.”

Can an automobile with such an incredibly powerful engine be considered a “greener” vehicle? Yes. As evidenced by the accolades the E320 has received, thanks in no small part to its revolutionary BlueTEC diesel engine. This V-6 engine produces 210 hp and a massive 388 lb-ft of torque, making driving highly enjoyable. But it’s the BlueTEC’s cleanliness and fuel economy that are truly amazing. Simply put, the E320 BlueTEC is one of the cleanest diesel vehicles in the world.

Thanks to this ground-breaking technological advance, the E320 BlueTEC gets outstanding fuel consumption: just 7.7L/100 km combined. All this, and it still provides the exhilarating driving experience you expect from an E-Class.

As our own Dr. Dieter Zetsche puts it: “The future of diesel is Blue.”









## Performance art at its finest.

We go to extraordinary lengths to produce the special driving experience offered by the E-Class.

The E300 4MATIC<sup>1</sup>™ for example, has a V-6 engine that produces 228 hp and 221 lb-ft of torque, giving you plenty of power to get the most out of everyday driving. The same extensive technology package is the secret behind the V-6 engine in the E350 4MATIC<sup>1</sup>™ models. Performance goes a step further on the E550 4MATIC<sup>1</sup>™ with its V-8 engine, producing 382 hp and 391 lb-ft of torque. The top-of-the-line E-Class engine? The high-performance, hand built AMG power plant in the E63 AMG. With 507 hp and 465 lb-ft of torque it rockets the vehicle to 100 km/h in just 4.5 seconds.

Fine wood and sumptuous materials aren't the only factors that help create the exceptional comfort you'll experience. The silence of the E-Class is legendary. This means that while you'll hear a lot about the E-Class, you won't hear a lot from it. With the 7G-TRONIC 7-speed automatic transmission<sup>1</sup>, including AMG SPEEDSHIFT enhancements on the E63 AMG, gear changes are barely perceptible. All 4MATIC<sup>1</sup>™ models feature a refined 5-speed automatic transmission.

All this can be taken to an even higher level with AIRMATIC DC air suspension<sup>2</sup> on the E550 4MATIC<sup>1</sup>™ and E63 AMG. AIRMATIC uses the Adaptive Damping System (ADS) to reduce body roll when cornering.

<sup>1</sup>Standard on the E320 BlueTEC. Not available on the E300 4MATIC<sup>1</sup>™ E350 4MATIC<sup>1</sup>™ or E550 4MATIC<sup>1</sup>™ models.

<sup>2</sup>Not available on the E300 4MATIC<sup>1</sup>™ E320 BlueTEC or E350 4MATIC<sup>1</sup>™ models.



## The E-Class makes the best of the weather, whether it's bad or good.

Our award-winning 4MATIC™ permanent all-wheel drive system gives you excellent control over your E-Class, so you can drive with complete confidence, no matter what the season or road conditions. It is always engaged, relentlessly sending torque to each wheel independently, ensuring optimal traction and control.

4MATIC™ is aided by our 4-wheel Electronic Traction System (4-ETS). 4-ETS monitors each wheel for the first sign of wheel slippage. It then individually brakes the slipping wheels to maintain the perfect balance of power and traction. By continuously ensuring that more power goes to the wheels with more grip, 4-ETS can help keep you moving, even if only one wheel has traction.

4MATIC™ also works seamlessly with our Electronic Stability Program (ESP®), enhancing your all-wheel drive advantage through curves in rain, snow, and even on dry roads.







## The E-Class wagon – live big.

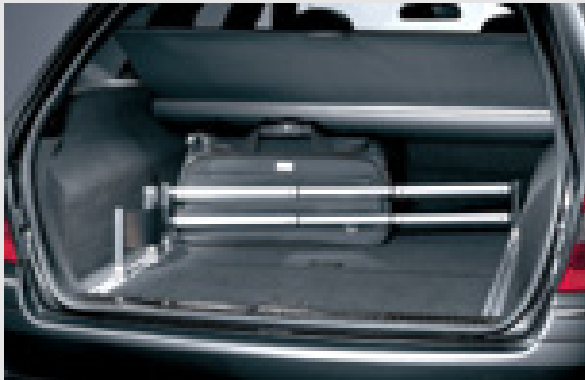
A load capacity of up to 1,950 litres doesn't really need further explanation – it gives you the flexibility and versatility you need to live big. But size alone has never been enough for the E350 4MATIC™ Wagon, which is why it features intelligent storage solutions.

The rear seats have a higher seating position than the front with a standard 2:1 split-folding functionality. Further to this, the rear backrests can be set to an angle 2° steeper than usual in order to significantly increase the volume of the load area.

To make sure that everything stays where you want it to stay, the EASY-PACK Load Securing Kit comes standard on the E350 4MATIC™ Wagon. It includes cargo rails, a telescopic bar, a retractable belt and 4 lashing rings, all designed to secure a variety of objects in place.

Small innovations like these have a major impact on just how useful the E-Class can be.

The EASY-PACK Load Securing Kit makes sure your cargo stays in place.



## Four-door sedan. Five-star performance.

The most powerful E-Class comes courtesy of the Mercedes-Benz AMG motorsport experts. The E63 AMG has 507 hp and accelerates from 0 to 100 km/h in just 4.5 seconds. And 465 lb-ft of torque ensures that acceleration from any other speed is an equally breathtaking experience. The top speed is electronically governed at 250 km/h, but there are no limits to the driving pleasure we offer. That's partly due to the AMG SPEEDSHIFT 7G-TRONIC transmission. The three shift programs give you a choice between a Comfort or Sport mode, as well as a manual mode that lets you change gears using AMG shift paddles mounted to the steering wheel. The set-up has distinct echoes of the world of motor racing – as does the AMG high-performance braking system with its composite front brake discs, and the AMG sport suspension.

In visual terms, the E63 AMG cuts a striking figure: The AMG body styling consists of a front apron, side air outlets, circular chrome-ringed fog lamps, a rear apron and side skirts. A slick AMG spoiler enhances the trunk lid. Other exclusive features of the E63 AMG include a specially tuned AMG sport exhaust with two chromed twin tailpipes and AMG 18" 5-spoke alloy wheels, painted titanium grey and burnished.

In the exclusive interior of the E63 AMG, high quality AMG Nappa leather appointments await, with AMG sport seats featuring Alcantara inserts at shoulder level and on the roof. There's an ergonomic AMG sport steering wheel to help you keep the E63 AMG under firm control, and the selector lever is trimmed in fine leather and Alcantara. These various features, including the RACETIMER in the AMG instrument cluster – assure an exciting motor racing atmosphere.

Experience a race-inspired drive with luxurious leather and ergonomic controls.





**AMG**

## Brilliantly engineered colours.

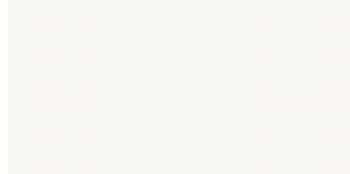


Wonderfully sophisticated and refined colours have been created using the most technologically advanced materials. A protective clear coat gives your E-Class a scratch resistance unparalleled in the automobile industry, making it less susceptible to environmental factors such as precipitation, sunlight, temperature variations, dust and soot.

	ARTICO LEATHER	Black	Cashmere Beige	Sierra Grey	LEATHER	Black	Cashmere Beige	Sierra Grey	AMG NAPPA LEATHER	Black	Cashmere Beige	Sierra Grey
<b>SOLID PAINT</b>												
Calcite White		●	●	●		●	●	●		●	●	●
<b>METALLIC PAINT</b>												
Obsidian Black		●	●	●		●	●	●		●	●	●
Cubanite Silver		●	○	●		●	○	●		●	○	●
Tenorite Grey		●	○	●		●	○	●		●	○	●
Iridium Silver		●	○	●		●	○	●		●	○	●

● Recommended combination    ○ Possible combination

**SOLID PAINT**



650 Calcite White

**METALLIC PAINT (OPTIONAL)**



197 Obsidian Black



755 Tenorite Grey



723 Cubanite Silver



775 Iridium Silver



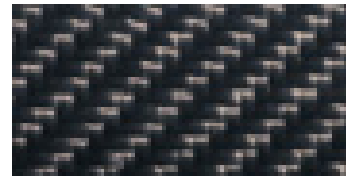
**TRIM**



732 Black Bird's Eye Maple



W60 *designo* Burl Walnut



H73 AMG Carbon Fibre

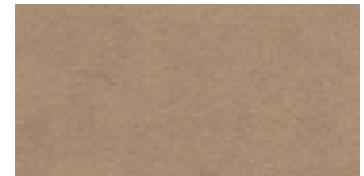
***designo***  
**ALCANTARA ROOF LINER**



Y83 Anthracite



Y87 Sierra Grey



Y89 Cashmere Beige

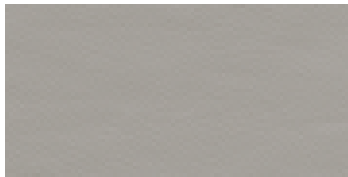
**ARTICO LEATHER**



141 Black



144 Cashmere Beige

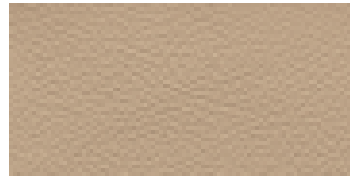


148 Sierra Grey

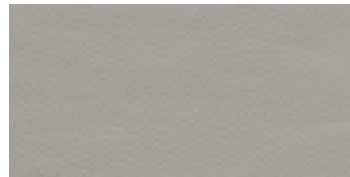
**LEATHER**



821 Black

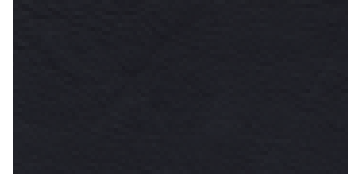


824 Cashmere Beige



828 Sierra Grey

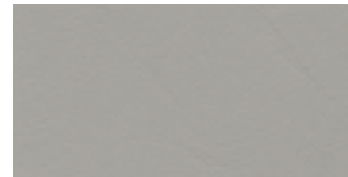
**AMG NAPPA LEATHER**



851 Black



854 Cashmere Beige



858 Sierra Grey

INDIVIDUAL EQUIPMENT (SELECTION)	E300 4MATIC™	E320 BlueTEC	E350 4MATIC™	E350 4MATIC™ Wagon	E550 4MATIC™	E63 AMG
<b>TRANSMISSION</b>						
5-speed automatic transmission	•	-	•	•	•	-
7G-TRONIC 7-speed automatic transmission	-	•	-	-	-	-
7G-TRONIC 7-speed automatic transmission with AMG SPEEDSHIFT enhancements	-	-	-	-	-	•
<b>TRACTION/STABILITY</b>						
4MATIC™ permanent all-wheel drive with 4ETS	•	-	•	•	•	-
Direct steering	•	-	•	•	•	•
Electronic Stability Program (ESP®) including ABS and traction control (ASR)	•	•	•	•	•	•
Brake Assist (BAS)	•	•	•	•	•	•
AIRMATIC DC air suspension with Adaptive Damping System (ADS)	-	-	-	-	•	•
Sport suspension	•	-	•	-	•	-
AMG sport suspension	-	-	-	-	-	•
AMG-tuned performance suspension	-	-	-	-	-	o <sup>1</sup>
Limited slip rear differential	-	-	-	-	-	o <sup>1</sup>
<b>AUDIO/VISUAL/COMMUNICATION</b>						
COMAND APS with hard-drive based navigation, LINGUATRONIC voice control and MP3-compatible 6-disc DVD changer	•	•	•	•	•	•
harman/kardon® LOGIC7® surround sound system	•	•	•	•	•	•
SIRIUS Satellite Radio	•	•	•	•	•	•
Bluetooth connectivity	•	•	•	•	•	•
Media Interface	•	•	•	•	•	•

INDIVIDUAL EQUIPMENT (SELECTION)	E300 4MATIC™	E320 BlueTEC	E350 4MATIC™	E350 4MATIC™ Wagon	E550 4MATIC™	E63 AMG
<b>EXTERIOR</b>						
16" 5-twin-spoke alloy wheels	-	•	-	-	-	-
17" 5-twin-spoke alloy wheels	-	-	-	•	-	-
18" 10-twin spoke alloy wheels	•	-	-	-	-	-
AMG 18" 5-spoke alloy wheels (all season tires)	-	-	•	-	•	-
AMG 18" 5-spoke alloy wheels (performance tires)	-	-	-	-	-	•
AMG 18" 5-spoke forged alloy wheels (performance tires)	-	-	-	-	-	o <sup>1</sup>
Electronically adjustable heated exterior mirrors with turn signal indicators	•	•	•	•	•	•
Heated windshield washer system with two-stage rain-sensing windshield wipers	•	•	•	•	•	•
Tinted glass	•	•	•	•	•	•
Remote trunk release	•	•	•	•	•	•
Electronic trunk closer	•	•	•	-	•	o <sup>1</sup>
Active Bi-Xenon headlamps with washers and cornering lights	•	•	•	•	•	•
AMG Styling Package	-	-	•	-	•	•
<b>INTERIOR</b>						
10-way power adjustable heated front seats with 3-position memory	•	•	•	•	•	•
Multicontour driver and front passenger seats with 3-position memory	-	-	-	-	•	•
Climate Comfort front seats (heated and ventilated, with perforated leather)	-	-	-	-	•	o <sup>1</sup>
Heated rear seats	-	-	•	•	•	o <sup>1</sup>
Split-folding rear seats	•	•	•	•	•	•



INDIVIDUAL EQUIPMENT (SELECTION)	E300 4MATIC™	E320 BlueTEC	E350 4MATIC™	E350 4MATIC™ Wagon	E550 4MATIC™	E63 AMG
ARTICO leather upholstery <sup>3</sup>	●	●	-	-	-	-
Leather upholstery	-	-	●	●	●	-
AMG Nappa leather upholstery	-	-	-	-	-	●
Leather-wrapped multifunction steering wheel and shift knob	●	●	●	●	●	●
Heated steering wheel	●	●	-	●	-	-
Black Bird's Eye Maple wood trim	●	●	●	●	●	●
<i>designo</i> Burl Walnut wood trim	-	-	-	-	-	○
AMG Carbon Fibre trim	-	-	-	-	-	○ <sup>1</sup>
<i>designo</i> Alcantara roof liner	-	-	-	-	-	●
Velour floor mats	●	●	●	●	●	●
Power-tilt/sliding glass sunroof	●	●	●	●	●	●
Panoramic sunroof	-	-	-	-	●	○ <sup>1</sup>
Rear window sunshade	-	●	●	-	●	●
Door-integrated roller blinds for rear side windows	-	-	-	●	-	○ <sup>1</sup>
THERMATIC automatic climate control	●	●	●	●	-	-
THERMOTRONIC 4-zone automatic climate control	-	-	-	-	●	●
Power-tilt/telescoping steering column with 3-position memory	●	●	●	●	●	●
Auto-dimming mirrors (rearview and driver's side)	●	●	●	●	●	●
Trunk pass-through and ski bag	●	●	●	●	●	-

INDIVIDUAL EQUIPMENT (SELECTION)	E300 4MATIC™	E320 BlueTEC	E350 4MATIC™	E350 4MATIC™ Wagon	E550 4MATIC™	E63 AMG
<b>CONVENIENCE</b>						
Integrated garage door opener	●	●	●	●	●	●
EASY-PACK power tailgate	-	-	-	●	-	-
EASY-PACK Load Securing Kit	-	-	-	●	-	-
DISTRONIC	-	-	-	-	-	○
SmartKey with panic button	●	●	●	●	●	●
KEYLESS-GO	-	-	-	-	●	○ <sup>1</sup>
PARKTRONIC	●	●	●	-	●	●
<b>SAFETY</b>						
PRE-SAFE®	●	●	●	●	●	●
Dual-front, front side and window curtain air bags	●	●	●	●	●	●
Five 3-point seat belts; front height-adjustable, rear with automatic belt-height adjustment (except centre rear)	●	●	●	●	●	●
ISOFIX child seat mounts	●	●	●	●	●	●
Anti-theft alarm system with tow-away protection	●	●	●	●	●	●
Belt tensioners with belt-force limiters	●	●	●	●	●	●
TeleAid Emergency Calling System <sup>4</sup>	●	●	●	●	●	●
Tire Pressure Loss Warning System	●	●	●	●	●	●
Tire Pressure Monitoring System	-	-	-	-	-	○ <sup>1</sup>
● Standard    ○ Optional    - Not Available						

<sup>1</sup>Only available as part of an option package. <sup>2</sup>© 2008 SIRIUS Satellite Radio Inc. "SIRIUS," the SIRIUS dog logo and related marks are trademarks of SIRIUS Satellite Radio Inc. Complimentary 6 months of service included. Monthly subscription required for service thereafter. <sup>3</sup>Man made leather. <sup>4</sup>Subscription is required for service to be active. TeleAid operates only where cellular and Global Positioning System coverage is available.

## Finish with a finishing touch or two.



If you want to give your E-Class an even sportier look, you'll find exactly what you're looking for with our complete line of accessories. They can help personalize your new E-Class, making it unique to you. Here is an in-depth look at just a few of the accessories available to give your E-Class that individual flavour.

See your dealer for more information.

### 17" "Markab" multi-spoke incenio alloy wheels

These designer accessory wheels make a statement. With a 245/45 R 17 specification, these multi-spoke wheels add an extra flair that will get you noticed.



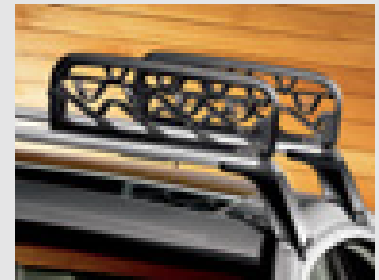
### 18" "Almach" 5-twin spoke alloy wheels

Opt for the timeless 5-twin spoke design with the "Almach" accessory wheels for your new E-Class. Emphasize power and performance with the 245/45 R 18 all-season tires.



### Roof rack

The Alustyle ski and snowboard rack is incredibly practical. It holds up to 4 pairs of skis or 2 snowboards.



### iPod® Integration Kit

You've spent time carefully filling your iPod® with the great music you love. Now you can enjoy every minute of every song as you cruise in your E-Class, courtesy of the iPod® Integration Kit.





	<b>E300 4MATIC™</b>	<b>E320 BlueTEC</b>	<b>E350 4MATIC™</b>	<b>E350 4MATIC™ WAGON</b>	<b>E550 4MATIC™</b>	<b>E63 AMG</b>
Engine type	DOHC 24-valve 90° V-6	DOHC 24-valve 90° V-6	DOHC 24-valve 90° V-6	DOHC 24-valve 90° V-6	DOHC 32-valve 90° V-8	DOHC 32-valve 90° V-8
Total displacement	2,996-cc	2,987-cc	3,498-cc	3,498-cc	5,461-cc	6,208-cc
Net power	228 hp @ 6,000 rpm	210 hp @ 3,400 rpm	268 hp @ 6,000 rpm	268 hp @ 6,000 rpm	382 hp @ 6,000 rpm	507 hp @ 6,800 rpm
Net torque	221 lb-ft @ 2,700–5,000 rpm	388 lb-ft @ 1,600–2,400 rpm	258 lb-ft @ 2,400–5,000 rpm	258 lb-ft @ 2,400–5,000 rpm	391 lb-ft @ 2,800–4,800 rpm	465 lb-ft @ 5,200 rpm
Acceleration <sup>1</sup> , 0–100 km/h	7.8 seconds	6.8 seconds	7.1 seconds	7.4 seconds	5.5 seconds	4.5 seconds
Approximate top speed	210 km/h	210 km/h <sup>2</sup>	210 km/h <sup>2</sup>	210 km/h <sup>2</sup>	210 km/h <sup>2</sup>	250 km/h <sup>2</sup>
Tires, front rear	245/55 R 18 245/55 R 18	225/55 R 16 225/55 R 16	245/40 R 18 245/40 R 18	245/55 R 17 245/55 R 17	245/40 R 18 245/40 R 18	245/40 R 18 265/35 R 18
Fuel economy <sup>3</sup> , city/highway estimate	12.4–8.8 L/100 km	9.0–6.1 L/100 km	12.9–9.0 L/100 km	13.3–9.4 L/100 km	15.8–10.4 L/100 km	17.2–10.8 L/100 km
Fuel tank capacity	80.0 litres (with 9.0-litre reserve)	80.0 litres (with 9.0-litre reserve)	80.0 litres (with 9.0-litre reserve)	80.0 litres (with 9.0-litre reserve)	80.0 litres (with 9.0-litre reserve)	80.0 litres (with 14.0-litre reserve)
Fuel requirement	Premium unleaded gasoline	Diesel	Premium unleaded gasoline	Premium unleaded gasoline	Premium unleaded gasoline	Premium unleaded gasoline
Dimensions <sup>4</sup>						
Wheelbase	112.4 in/2,854 mm	112.4 in/2,854 mm	112.4 in/2,854 mm	112.4 in/2,854 mm	112.4 in/2,854 mm	112.4 in/2,854 mm
Overall length	191.0 in/4,852 mm	191.7 in/4,870 mm	191.7 in/4,870 mm	193.1 in/4,905 mm	191.7 in/4,870 mm	192.2 in/4,881 mm
Overall height	59.0 in/1,498 mm	58.4 in/1,484 mm	59.1 in/1,501 mm	59.5 in/1,511 mm	58.1 in/1,475 mm	57.7 in/1,465 mm
Overall width incl. mirrors	81.2 in/2,063 mm	81.2 in/2,063 mm	81.2 in/2,063 mm	81.2 in/2,063 mm	81.2 in/2,063 mm	81.2 in/2,063 mm
Curb weight	3,902 lb/1,770 kg	3,860 lb/1,750 kg	3,925 lb/1,780 kg	4,245 lb/1,925 kg	4,100 lb/1,860 kg	4,034 lb/1,830 kg
Trunk capacity	19.1 cu ft/540 litres	19.1 cu ft/540 litres	19.1 cu ft/540 litres	See Cargo Capacity	18.7 cu ft/530 litres	18.7 cu ft/530 litres
Cargo capacity						
Rear seats in use					24.4 cu ft/690 litres	
Rear seats lowered					68.9 cu ft/1,950 litres	

<sup>1</sup>Stated rates of acceleration are based on manufacturer's track results and may vary depending upon model, environmental and road surface conditions, driving style, elevation and vehicle load. <sup>2</sup>Electronically limited. <sup>3</sup>These estimates are based on Transport Canada testing methods. The actual fuel consumption of this vehicle may vary. Refer to the *Fuel Consumption Guide*. <sup>4</sup>Dimensions shown are for models with standard equipment.

## A passion for things done right.

It's what you expect from Mercedes-Benz. A passion for craftsmanship and attention to detail is what sets Mercedes-Benz apart from all other manufacturers. This passion drives us to set new standards in design, performance, comfort and safety. To continually build on the legendary traditions of Mercedes-Benz. And to provide you with an ownership experience unlike any other, including the valuable benefits described below.

### 24-hour Roadside Assistance

During the basic warranty coverage of 48 months and the time duration of the optional Extended Limited Warranty, Mercedes-Benz Roadside Assistance will be at your service. We'll bring you some gas, replace a flat tire with your spare, or jumpstart your car. In the event of a mechanical breakdown, if attempts by our Roadside Assistance technician have not made your vehicle safely operable, towing service will be provided to the nearest Mercedes-Benz dealership. Assistance is available 24 hours a day, every day, to anyone driving a Mercedes-Benz anywhere in Canada or the continental U.S.<sup>1</sup>

### Wear and tear coverage

For 24 months or 40,000 km (whichever comes first) many items normally considered "wear and tear", such as light bulbs, brake pads and discs, are covered. If necessary, an authorized Mercedes-Benz dealer will replace these parts at no charge to you.

### Mercedes-Benz warranties

The Mercedes-Benz New Vehicle Limited Warranty covers defects in materials or workmanship for 48 months or 80,000 km, whichever occurs first. To widen your window of confidence, you can opt for a Mercedes-Benz Extended Limited Warranty as well.<sup>2</sup>

### Customer service

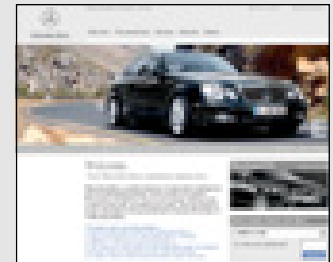
Owning a Mercedes-Benz means that when you have a question, we're here to help. Customer Service is open from 9 a.m. to 5 p.m. EST, Monday through Friday, and is staffed with knowledgeable Mercedes-Benz people who can talk you through the finer points of working your car's audio system — or even assist you in locating the nearest Mercedes-Benz dealership. Just call 1-800-387-0100. It's that simple.

### Trip interruption reimbursement

If a breakdown covered by your New Vehicle Limited Warranty occurs more than 80 km from your home, leaves your Mercedes-Benz vehicle inoperable or unsafe to drive, and requires overnight repairs, we've got you covered. You will be reimbursed up to \$500 for hotel accommodations and up to \$600 for alternative travel expenses per incident while your car is being repaired at an authorized Mercedes-Benz dealership.

**Log on to learn more at  
mercedes-benz.ca**

Looking for more Mercedes-Benz information? Visit [mercedes-benz.ca](http://mercedes-benz.ca) to open an online window to Mercedes-Benz Canada. Get information about any model, including financing and leasing options, upcoming vehicles, or purchase Mercedes-Benz the Collection gifts and personal accessories. Our website also offers details about the Mercedes-Benz Extended Limited Warranty, Mercedes-Benz Ownership, and the history of Mercedes-Benz.



<sup>1</sup>Vehicle must be accessible from main roads. Roadside Assistance may involve charges for parts, service and towing. Depending on the circumstances, these services may be provided by an outside service provider, courtesy of Mercedes-Benz Roadside Assistance. For full details of the Roadside Assistance Program, please see your dealer. <sup>2</sup>Please see your dealer for warranty details as well as for terms, conditions and pricing for extended warranty options.

## To be continued. With a test drive.

Nowhere is a Mercedes-Benz so convincing as on the road. It is only there that you can fully experience the effortlessly superior handling that makes this car so special. You can feel how the powerful engine drives the vehicle onwards and how the precise steering movements have a direct effect on your own mood. The special atmosphere that arises during a drive in a Mercedes-Benz cannot be put down on paper. That's why we would like to invite you to reserve an appointment for a test drive at your local Mercedes-Benz dealer. Or visit [www.mercedes-benz.ca](http://www.mercedes-benz.ca). We look forward to seeing you.





© 2008 Mercedes-Benz Canada Inc.

All illustrations and specifications contained in this brochure are based on the latest product information available at the time of publication. Mercedes-Benz Canada reserves the right to make changes at any time, without notice, in colours, materials, equipment, specifications and models. Any inaccuracies in colours shown are due to reproduction variations of the printing process. Some vehicles may be shown with non-Canadian equipment. Some vehicles may be shown without side marker lights. Some vehicles are shown with optional equipment available at extra cost. Some optional equipment may not be available on all models. For current information regarding the range of models, standard features, optional equipment and/or colours available in Canada and their pricing, contact your nearest authorized Mercedes-Benz dealer or visit [mercedes-benz.ca](http://mercedes-benz.ca). harman/kardon and LOGIC7 are registered trademarks of Harman International Industries Inc. iPod is a registered trademark of Apple Computer, Inc.

Printed in Canada  
MBC-08-E09-6200E

Mercedes-Benz Canada Inc. 98 Vanderhoof Avenue, Toronto, Ontario M4G 4C9  
1-800-387-0100  
[www.mercedes-benz.ca](http://www.mercedes-benz.ca)



**Mixed Sources**  
Product group from well-managed  
forests and other controlled sources  
[www.fsc.org](http://www.fsc.org) Cert no. SGS-COC-004614  
© 1996 Forest Stewardship Council