



2010

CAMARO

 **Mixed Sources**
Product group from well-managed
forests, controlled sources and
recycled wood or fiber
www.fsc.org Cert no. SW-COC-002429
© 1996 Forest Stewardship Council

*Chevrolet is a brand of General Motors of Canada
the Official Vehicle Partner of the Vancouver
2010 Olympic and Paralympic Winter Games.
™© 2008, VANOC. Used under License.



190-10-B-007E

2010 CAMARO

DRIVEN BY PASSION.

The designers and engineers who created the 2010 Camaro share a motivating force with the people who will drive it: passion. That passion is expressed through its muscular design and captivating performance that together produce a fully engaging driving experience. The 2010 Camaro not only showcases the latest in Chevrolet styling and technology, it also represents the triumphant debut of the new generation of Chevrolet performance driving. It represents the reinvention of the sports car for the 21st century. Better yet – it's built right here in Canada.

Our passion took a real-world form through the rigorous development of the 2010 Chevrolet Camaro. Now it's your turn.

chevrolet.gm.ca

"This car needed to break new ground ... it just has a spirit and a drive that we all get excited about."

- ED WELBURN, GM VICE-PRESIDENT GLOBAL DESIGN





DESIGN

IT HAS THAT LOOK IN ITS EYES.

Call it hunger – a stunning design statement that makes its intentions crystal clear. You can see it in the creased lines, bold fender flares and assertive rear shoulders. The long hood and short rear deck add to the iconic look, while the aggressive stance with large wheels and tires positioned outboard embody Camaro's performance credentials. The cumulative effect generates a powerful sense of anticipation – even before you strap yourself into the cockpit. A potent presence matched by equally purposeful engineering. It has that look – and so will you. The 2010 Camaro.

TOP LEFT: HIGH-INTENSITY DISCHARGE HEADLIGHTS WITH LED HALO RINGS ARE INCLUDED WITH THE AVAILABLE RS PACKAGE.

CENTRE LEFT: THE HIGHLY RECOGNIZABLE CHEVROLET BOW TIE FORMS THE CENTREPIECE OF CAMARO'S V-SHAPED FRONT GRILLE.

BOTTOM LEFT: THE AVAILABLE RS PACKAGE ADDS A SERIES OF DRAMATIC STYLING TOUCHES LIKE THE UNIQUE TAIL LIGHTS AND RS BADGING.



"Designing a beautiful car is very important, but it's not like design against engineering. We were really focused on collaborating and creating the best functionality ..."

– SANGYUP LEE, CAMARO DESIGNER



COCKPIT

BOLSTERING PERFORMANCE.

The cockpit of a performance car should be highly functional and intuitive to operate, creating an environment that heightens both confidence and control. Camaro's firm supportive seat structure places you in the right position to assume total command. The twin analogue gauge clusters mounted on either side of the Driver Information Centre relay information with accuracy and style. But merely describing the high-tech instrumentation and controls is no substitute for the real experience. Bolster your driving ambitions – in Camaro.

TOP RIGHT: THE TIRE PRESSURE MONITORING SYSTEM CONTINUOUSLY UPDATES DATA ON THE COMPREHENSIVE DRIVER INFORMATION CENTRE.

CENTRE RIGHT: THE FOUR-PACK GAUGE SET OFFERS AN UPDATED TAKE ON RETRO SPORT STYLING. IT IS INCLUDED IN CAMARO 2LT AND 2SS MODELS.

BOTTOM RIGHT: THE STRATEGIC LAYOUT OF THE GAUGES AND THE ERGONOMIC DESIGN OF THE CONTROLS HELP YOU STAY TOTALLY FOCUSED ON THE DRIVING EXPERIENCE.



CAMARO LS/LT

A DIRECT INJECTION OF ADRENALINE.

In Camaro, advanced technology is used to produce more than blistering performance and extraordinary control. Its primary objective is to produce an adrenaline-charged driving experience.

At the heart is a 304 horsepower V6 engine with power and efficiency enhanced by Direct Injection and Variable Valve Timing (VVT). When mated with the standard six-speed manual transmission, the 2010 Camaro achieved an amazingly frugal 6.9L/100 km highway fuel efficiency rating.* That's better than the much less powerful V6-equipped Ford Mustang or Dodge Challenger. It's even better than the Honda Accord V6 with manual transmission.** Camaro also gives you the choice of an available automatic six-speed transmission that includes steering wheel-mounted TAPshift™ Manual Shift Control – it earned a highway fuel efficiency rating of just 6.8L/100 km.* Isn't it time to shift your driving into a higher gear?

* Based on GM Testing in accordance with approved Transport Canada test methods. Your actual fuel consumption may vary.

** Based on the latest 2009 Model Year competitive information available at time of printing.

TOP RIGHT: DYNAMIC SOUND – A 9-SPEAKER BOSTON ACOUSTICS® PREMIUM AUDIO SYSTEM WITH A 245-WATT AMPLIFIER. STANDARD ON 2LT AND 2SS MODELS AND AVAILABLE ON 1LT AND 1SS.

CENTRE RIGHT: THE INFERNO ORANGE TRIM PACKAGE FEATURES FRONT LEATHER-APPOINTED SEATS AND ACCENT STITCHING DETAILS THROUGHOUT THE INTERIOR. AVAILABLE ON 2LT AND 2SS MODELS.

BOTTOM RIGHT: IT'S YOUR SOUNDTRACK – A USB PORT IN THE CONSOLE ENABLES YOU TO PLAY SELECTIONS FROM YOUR IPOD® OR OTHER MP3 PLAYERS. STANDARD ON 2LT AND 2SS MODELS AND AVAILABLE ON 1LT.





CAMARO SS

LOOKS MEAN. DRIVES EVEN MEANER.

The soul of the Camaro SS is found under the hood in its High Output 6.2L V8 engine. It's mated with the standard six-speed manual transmission to generate an awesome 426 horsepower – and to propel the SS from 0-96 km/h (0-60 mph) in just 4.7 seconds.*

With prodigious power comes equally commanding braking capabilities thanks to the massive four-piston Brembo® performance brakes. The handling is also authoritative, thanks to a 4.5-link independent rear suspension with progressive-rate coil springs over shocks that keep Camaro glued to the road. When it comes to performance, the 2010 Camaro SS means business.

* Based on GM Testing.

TOP LEFT: THE AVAILABLE TAPSHIFT AUTOMATIC TRANSMISSION IS MATED WITH A 400-HP VERSION OF THE 6.2L V8 THAT FEATURES ACTIVE FUEL MANAGEMENT® – IT SHUTS DOWN HALF THE ENGINE'S CYLINDERS WHEN POWER DEMANDS ARE LOW.

CENTRE LEFT: THE AVAILABLE 20-IN. POLISHED ALUMINUM WHEELS ARE MATCHED WITH PIRELLI P ZERO™ ULTRA-HIGH-PERFORMANCE TIRES.

BOTTOM LEFT: BREMBO PERFORMANCE BRAKES WITH 4-PISTON CALIPERS AT ALL FOUR CORNERS ARE STANDARD ON CAMARO SS MODELS.



CAMARO ZSS, SHOWN IN CYBER GRAY METALLIC WITH AVAILABLE RS PACKAGE.

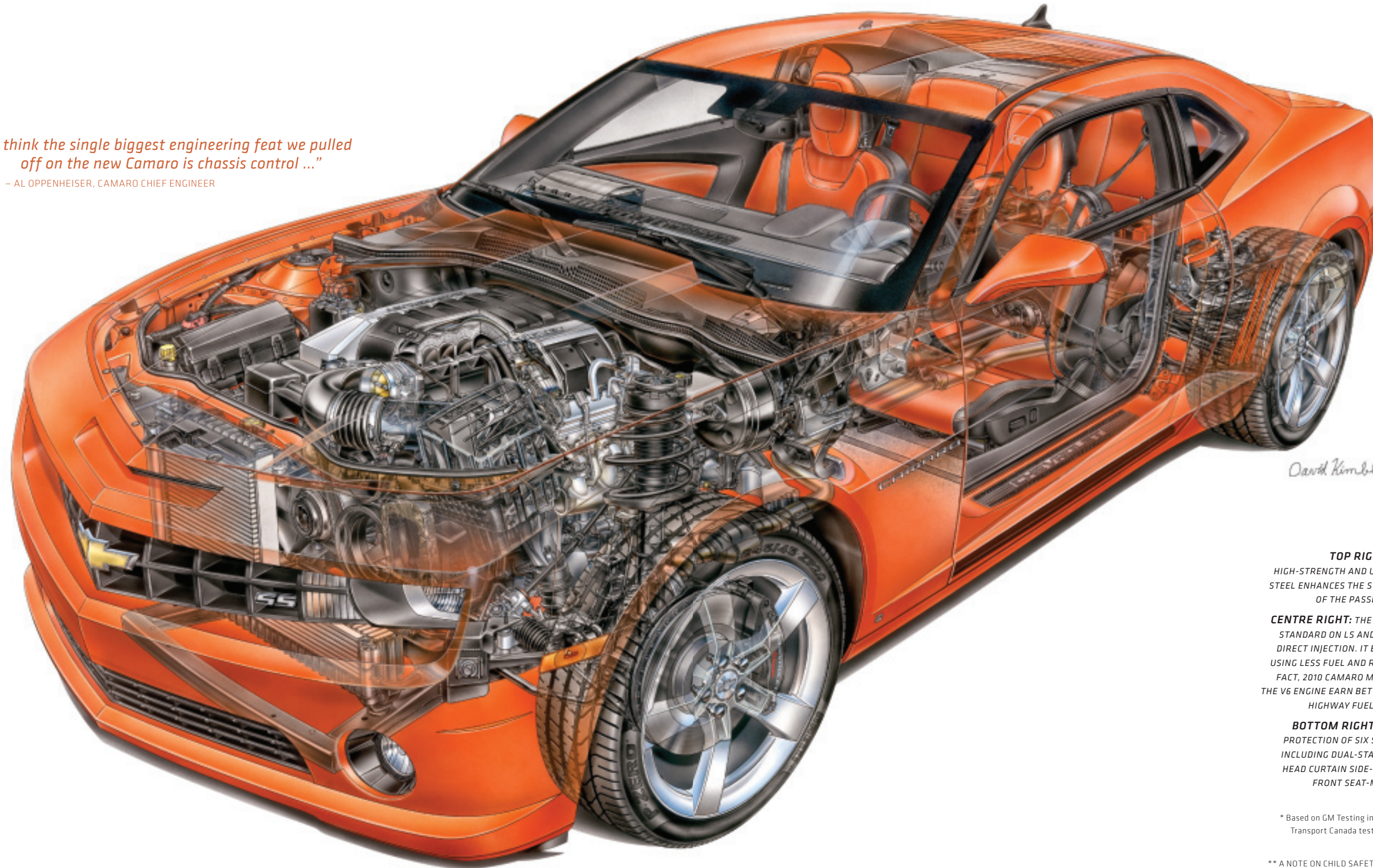
TECHNOLOGY

TESTING, TESTING ONE-TWO-THREE.

With such high expectations of the 2010 Camaro, extensive testing was essential in achieving a new performance benchmark. That's why, during the development of the new Camaro, we ventured to a wide variety of global locations - from Australia to Germany to Sweden. Included was the circuit with a reputation as the toughest in the world: the Nordschleife course at Nürburgring. What was learned on those tracks made Camaro's handling dynamics even more stable and precise. Key technologies include a 4.5 link independent rear suspension, traction control and anti-lock brakes, with input provided by microcomputers, accelerometers and stability sensors. A three-mode StabiliTrak® system is included on LS and LT models, while SS models add a fourth competitive mode for sanctioned racing events. The stiff, ultra-high-strength steel chassis structure further enhances the suspension tuning while contributing to the comprehensive occupant protection. A technological tour de force - proven on test tracks around the globe and driven by some of the world's elite test drivers. The track ahead is now clear. The wait is over. You're next.

"I think the single biggest engineering feat we pulled off on the new Camaro is chassis control ..."

- AL OPPENHEISER, CAMARO CHIEF ENGINEER



David Kimble

TOP RIGHT: EXTENSIVE USE OF HIGH-STRENGTH AND ULTRA-HIGH-STRENGTH STEEL ENHANCES THE STRUCTURAL INTEGRITY OF THE PASSENGER COMPARTMENT.

CENTRE RIGHT: THE 3.6L V6 ENGINE THAT'S STANDARD ON LS AND LT MODELS FEATURES DIRECT INJECTION. IT BOOSTS OUTPUT WHILE USING LESS FUEL AND REDUCES EMISSIONS. IN FACT, 2010 CAMARO MODELS EQUIPPED WITH THE V6 ENGINE EARN BETTER THAN 7.0 L/100 KM HIGHWAY FUEL EFFICIENCY RATINGS.*

BOTTOM RIGHT: CAMARO OFFERS THE PROTECTION OF SIX STANDARD AIR BAGS,** INCLUDING DUAL-STAGE FRONTAL AIR BAGS, HEAD CURTAIN SIDE-IMPACT AIR BAGS, AND FRONT SEAT-MOUNTED SIDE-IMPACT THORAX AIR BAGS.

* Based on GM Testing in accordance with approved Transport Canada test methods. Your actual fuel consumption may vary.

** A NOTE ON CHILD SAFETY: Always use safety belts and proper child restraints, even in vehicles equipped with air bags. Refer to the vehicle Owner's Manual and child safety seat instructions for more information.



CAMARO MODEL OVERVIEW

CAMARO LS

Camaro LS includes these features:

- 304 hp 3.6L V6 engine with Direct Injection and VVT
- GM Oil Life Monitoring System
- 6-speed manual transmission standard; 6-speed automatic transmission with TAPshift Manual Shift Control available
- 4-wheel disc brakes with ABS
- StabiliTrak electronic stability control system
- Traction control
- Limited slip differential
- 4-wheel independent sport suspension
- 18-in. heritage steel wheels
- Tire pressure monitoring system
- Dual exhaust system with polished stainless steel exhaust tips
- Power exterior mirrors
- Remote keyless entry system
- Six air bags
- Driver Information Centre with compass
- Air conditioning
- Power windows and door locks
- Tilt and telescoping steering column
- Cruise control
- Manual 4-way driver's seat; manual 2-way front passenger seat
- Enhanced 6-speaker sound system with CD player, MP3 playback and auxiliary audio input jack
- XM Satellite Radio™
- OnStar® with 1 year of the Safe & Sound Plan.

CAMARO 1LT

Camaro 1LT enhances LS features with:

- 18-in. painted aluminum wheels
- Fog lights
- Power 6-way driver's seat adjuster
- OnStar with 1 year of the Directions & Connections Plan.

CAMARO 2LT

Camaro 2LT enhances 1LT features with:

- 19-in. painted aluminum wheels
- Heated power exterior mirrors with auto-dimming driver's mirror
- Leather-wrapped steering wheel with sound system controls
- Leather-wrapped shifter
- Auto-dimming interior rear-view mirror
- Heated, leather-appointed front sport bucket seats
- 9-speaker Boston Acoustics premium audio system with a 245-watt amplifier
- USB port
- Bluetooth® connectivity.

CAMARO 1SS

Camaro 1SS includes these distinctive features:

- 426 hp High Output 6.2L V8 engine standard; 400 hp High-Output 6.2L V8 engine with Active Fuel Management available
- 6-speed manual transmission standard; 6-speed automatic transmission with TAPshift Manual Shift Control available
- Brembo performance brakes
- Performance suspension
- 20-in. painted aluminum wheels
- Unique SS lower body extension, front air scoop, brake cooling slots, lower grille and rear diffuser
- Leather-wrapped shifter
- SS embroidery on front-seat headrests
- Enhanced 6-speaker sound system with CD player, MP3 playback and auxiliary audio input jack
- OnStar with 1 year of the Safe & Sound Plan.

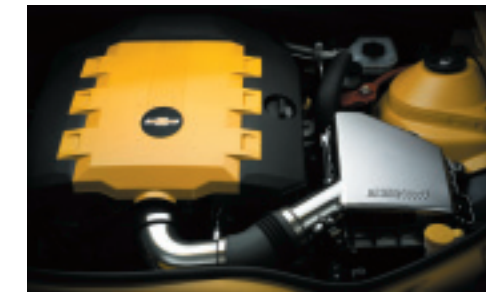
CAMARO 2SS

Camaro 2SS enhances 1SS features with:

- Heated power exterior mirrors with auto-dimming driver's mirror
- Leather-wrapped steering wheel with sound system controls
- Auto-dimming interior rear-view mirror
- Heated, leather-appointed front sport bucket seats
- 9-speaker Boston Acoustics premium audio system with a 245-watt amplifier
- USB port
- Bluetooth connectivity
- OnStar with 1 year of the Directions & Connections Plan.



ACCESSORIES



BODY-COLOURED ENGINE COVER WITH PERFORMANCE INTAKE



SATIN-NICKEL FUEL DOOR



CUSTOM CAMARO CAR COVER



GROUND EFFECTS PACKAGE



21-IN. MACHINED-ALUMINUM WHEEL WITH BLACK ACCENTS



21-IN. BLACK PAINTED WHEEL

HOW TO TRANSFORM YOUR CAMARO INTO A ONE-OF-A-KIND.

If you believe your vehicle represents an important expression of your individuality, take Camaro's style and functionality to the next level with the addition of Chevrolet Accessories. They were part of Camaro's development process to ensure they offer the same quality of fit, finish and function as the rest of the vehicle. They are backed by the 3-year/60,000 km New Vehicle Limited Warranty* and can be included in your finance agreement through GMAC. Ask your dealer for a complete list of the Chevrolet Accessories available for Camaro, or visit gm.ca

* Whichever comes first, when permanently installed by the dealer at the time you purchase your new vehicle.



ACCESSORIES

ONSTAR



THE COMPREHENSIVE DRIVER INFORMATION CENTRE DISPLAYS TURN-BY-TURN NAVIGATION** ROUTE INFORMATION YOU CAN DOWNLOAD FROM ONSTAR. IT'S PART OF THE DIRECTIONS & CONNECTIONS PLAN THAT IS INCLUDED FOR 1 YEAR ON CAMARO 1LT, 2LT AND 2SS MODELS.

Does your car have a help button? If you have OnStar,† you can get the help you need at the push of a button. If you're in a collision, you don't even need to ask for help – sensors around your car can automatically alert an OnStar Advisor. If your car's stolen, we can use GPS technology to help police find it. OnStar and 1 year of the Safe & Sound Plan is included on Camaro LS and 1SS; 1 year of the Directions & Connections Plan is included with 1LT, 2LT and 2SS. Also included with the Directions & Connections Plan is Turn-by-Turn Navigation.** It's the simplest and smartest navigation system available. Just push the OnStar button and tell the Advisor where you want to go, and turn-by-turn directions are downloaded to your vehicle. No one offers more ways to help on the road. Learn more at onstar.ca.

** Turn-by-Turn Navigation not available in certain areas. Availability impacted by some geographical/cellular limitations, advisor-assisted routing available. Visit onstar.ca for coverage map.

† OnStar services require vehicle electrical system (including battery), wireless service and GPS satellite signals to be available and operating for features to function properly. Subscription Service Agreement required. Call 1-888-4-ONSTAR (1-888-466-7827) or visit onstar.ca for OnStar's Terms and Conditions, Privacy Statement and details and system limitations.

XM SATELLITE RADIO



Your listening preferences are very personal. XM Satellite Radio gives you access to the largest playlist on the planet and the most commercial-free music in digital-quality sound. That's on top of news, talk, comedy and sports channels – including more than 1000 NHL games. It all adds up to 130 channels to choose from, coast to coast.†† Why offer so much choice? XM Satellite Radio has to appeal to a wide range of tastes, with more than 9 million subscribers. And it's included on all Camaro models. Ask your dealer for more information.

†† Available in 10 Canadian provinces and the 48 contiguous United States. Subscription sold separately after 3 trial months.

CAMARO STANDARD AND OPTIONAL FEATURES

SAFETY AND SECURITY	LS	1LT	2LT	1SS	2SS
Air bags – dual-stage, driver and front-passenger, frontal with Passenger Sensing System	S	S	S	S	S
Air bags – front-to-rear, side-impact head curtain	S	S	S	S	S
Air bags – driver and front-passenger, thorax, seat-mounted side-impact	S	S	S	S	S
Brake/transmission shift interlock (automatic transmission only)	S	S	S	S	S
Door locks – power, programmable with lock-out protection	S	S	S	S	S
Headlights – Daytime Running Lights with automatic light control	S	S	S	S	S
Keyless entry system – remote with Panic feature	S	S	S	S	S
OnStar In-Vehicle Communications and Assistance Service – includes 1 year of the Safe & Sound Plan*	S	–	–	S	–
OnStar In-Vehicle Communications and Assistance Service – includes 1 year of the Directions & Connections Plan* with Turn-by-Turn Navigation**	–	S	S	–	S
Safety restraints – LATCH (Lower Anchors and top Tethers for Children), rear seats	S	S	S	S	S
StabiliTrak – electronic stability control system	S	S	S	S	S
Theft-deterrent system – electronic immobilizer	S	S	S	S	S
Traction control – electronic, full-function, all-speed	S	S	S	S	S
MECHANICAL					
Battery – with run-down protection	S	S	S	S	S
Brakes – power, 4-wheel disc	S	S	S	S	S
Brakes – Brembo, performance 4-piston front and rear calipers	–	–	–	S	S
Brakes – 4-wheel anti-lock braking system (ABS) with electronic brake assist	S	S	S	S	S
Differential – limited slip rear	S	S	S	S	S
Drive – rear-wheel	S	S	S	S	S
Engine – 3.6L DOHC V6 VVT with Direct Injection Horsepower – 304 @ 6400 rpm; Torque – 273 lb.-ft. @ 5200 rpm	S	S	S	–	–
Engine – 6.2L LS3 V8 with SFI, with standard manual transmission Horsepower – 426 @ 5900 rpm; Torque – 420 lb.-ft. @ 4600 rpm	–	–	–	S	S
Engine – 6.2L L99 V8 with SFI and Active Fuel Management, with available automatic transmission Horsepower – 400 @ 5900 rpm; Torque – 410 lb.-ft. @ 4300 rpm	–	–	–	0	0 ¹
Engine – block heater	0	0	0	–	–
Engine – oil cooler	–	–	–	S	S
Exhaust system – aluminized stainless steel	S	S	S	S	S
Exhaust system – dual outlets with polished tips	S	S	S	S	S
Steering – power, variable-ratio rack-and-pinion	S	S	S	S	S
Suspension – 4-wheel independent, Sport	S	S	S	–	–
Suspension – 4-wheel independent, Performance	–	–	–	S	S
Transmission – 6-speed manual	S	S	S	S	S
Transmission – 6-speed automatic with TAPshift Manual Shift Control	0 ²	0 ^{2,3}	0 ^{1,2}	0 ⁴	0 ^{1,4}
Vehicle starter system – remote	–	0 ⁵	0 ⁶	–	0 ⁶

EXTERIOR	LS	1LT	2LT	1SS	2SS
Fog lights ⁷	–	S	S	S	S
Glass – Solar Ray®, tinted	S	S	S	S	S
Headlights – halogen	S	S	S	S	S
Headlights – High-Intensity Discharge (HID) ⁸	–	0	0	0	0
Mirrors – manual folding, power remote control	S	S	S	S	S
Mirrors – heated with driver-side auto-dimming feature	–	–	S	–	S
Moldings – lower rocker, body-colour	S	S	S	S	S
Spoiler – rear, deck-lid	–	0 ⁸	0 ⁸	S	S
Sunroof – power, sliding glass panel, express-open feature	–	0	0	0	0
Tires – P245/55R18 all-season touring ¹	S	S	–	–	–
Tires – P245/50R19 all-season touring ¹	–	–	S	–	–
Tires – P245/45R20 front and P275/40R20 rear summer performance ^{1†}	–	0 ⁸	0 ⁸	S	S
Tire – compact spare	S	S	S	–	–
Tire – inflator kit	0	0	0	S	S
Wheels – 18" x 7.5" heritage steel (A)	S	–	–	–	–
Wheels – 18" x 7.5" painted aluminum (B)	–	S	–	–	–
Wheels – 19" x 8" painted aluminum (C)	–	–	S	–	–
Wheels – 19" x 8" polished aluminum	–	0 ^{9,10}	0 ⁹	–	–
Wheels – 20" x 8" front and 20" x 9" rear Sterling Silver-finish aluminum	–	–	–	S	S
Wheels – 20" x 8" front and 20" x 9" rear Midnight Silver-finish aluminum, flangeless (D) ⁸	–	0	0	0	0
Wheels – 20" x 8" front and 20" x 9" rear polished aluminum (E)	–	0 ¹¹	0 ¹¹	0	0
Windshield wipers – 2-speed with variable delay (intermittent)	S	S	S	S	S
LT RS Package – includes body-coloured roof ditch moulding, rear deck-lid spoiler, 20" x 8" front and 20" x 9" rear Midnight Silver-finish painted flangeless aluminum wheels (D) with P245/45R20 front and P275/40R20 rear summer performance tires, ^{1†} High-Intensity Discharge (HID) headlights, unique tail lights and RS badging ⁷	–	0	0	–	–
SS RS Package – includes body-coloured roof ditch moulding, 20" x 8" front and 20" x 9" rear Midnight Silver-finish painted flangeless aluminum wheels (D), High-Intensity Discharge (HID) headlights, unique tail lights and RS badging ⁷	–	–	–	0	0

INTERIOR	LS	1LT	2LT	1SS	2SS
Air conditioning – manual	S	S	S	S	S
Console – front floor with dual cupholders and auxiliary power outlets	S	S	S	S	S
Cruise control – steering-wheel mounted, electronic with resume, coast and decelerate/accelerate features	S	S	S	S	S
Defogger – electric rear-window	S	S	S	S	S
Floor mats – front, carpeted	S	S	S	S	S
Instrumentation – analogue cluster (includes speedometer, tachometer, coolant temperature and fuel gauge)	S	S	S	S	S
Instrumentation – Driver Information Centre (DIC) (includes exterior temperature display, 8-point compass and tire pressure monitoring system)	S	S	S	S	S
Instrumentation – GM Oil Life Monitoring System	S	S	S	S	S
Instrumentation – centre console-mounted voltmeter, oil pressure, oil temperature and transmission fluid temperature gauges	–	–	S	–	S
Lights – courtesy with delayed entry/exit, dome, front reading and theatre dimming	S	S	S	S	S
Mirror – rear-view, with auto-dimming feature	–	–	S	–	S
Power outlets – auxiliary, centre console storage area and at front of centre console	S	S	S	S	S
Retained accessory power	S	S	S	S	S
Steering column – tilt and telescopic adjustable	S	S	S	S	S
Steering wheel – 3-spoke, leather-wrapped (includes leather-wrapped shifter)	–	–	–	S	–
Steering wheel – 3-spoke, leather-wrapped with sound system controls (includes leather-wrapped shifter)	–	0 ¹²	S	–	S
Sunshades – LH and RH padded; covered driver and front-passenger vanity mirrors	S	S	S	S	S
Trunk – release, power remote	S	S	S	S	S

INTERIOR (CONTINUED)	LS	1LT	2LT	1SS	2SS
Universal home remote – programmable 3-channel transmitter	–	–	S	–	S
Windows – power, driver and passenger express-up and down	S	S	S	S	S
Convenience and Connectivity Package – includes leather-wrapped steering wheel with sound system controls, leather-wrapped shifter, cargo convenience net, Bluetooth mobile phone connectivity and wireless PDIM and USB port	–	0 ¹³	–	–	–
Inferno Orange Trim Package – includes Black interior with Inferno Orange leather-appointed front seats with accent stitching on steering wheel, shifter, door armrests, centre console and seats, Inferno Orange door trim and instrument panel appliqué	–	–	0 ¹⁴	–	0 ¹⁴
SEATS					
Cloth reclining front bucket seats with adjustable head restraints	S	–	–	–	–
Sport cloth reclining front bucket seats with adjustable head restraints	–	S	–	S	–
Front bucket seats with heated leather-appointed seating surfaces and adjustable head restraints	–	–	S	–	S
Power driver and front-passenger recliners	S	S	S	S	S
Power 6-way driver seat adjuster	–	S	S	S	S
Front-passenger seatback map pocket	–	S	S	S	S
"SS" embroidery on front head restraints	–	–	–	S	S
Seatbacks – rear, folding with trunk pass-through	S	S	S	S	S

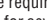
SOUND SYSTEMS	LS	1LT	2LT	1SS	2SS
All Camaro sound systems include an electronically tuned AM/FM stereo with MP3 playback, music navigator, auxiliary audio input jack and Graphic Information Display (GID) and 6-speaker sound system	S	S	–	S	–
9-speaker Boston Acoustics premium sound system with 245-watt amplifier	–	0	S	0	S
XM Satellite Radio [†]	S	S	S	S	S
Bluetooth – utilizes vehicle sound system, microphone, voice recognition and controls with Bluetooth-enabled mobile phones and wireless PDIM and USB port	–	0 ⁵	S	–	S

S – Standard. 0 – Optional individually or in combination with other optional equipment.

- Includes remote vehicle starter system.
- Deletes limited slip differential.
- Includes remote vehicle starter system when ordered with available Convenience and Connectivity Package.
- Included with available 6.2L L99 V8 engine.
- Included with available Convenience and Connectivity Package.
- Included with available 6-speed automatic transmission.
- Fog lights act as Daytime Running Lights when available RS Package is ordered.
- Included with available RS Package.
- Not available with RS Package.
- Includes P245/50R19 all-season¹ touring tires.
- Requires available RS Package.
- Included with available Convenience and Connectivity Package.
- Includes remote vehicle starter system when available automatic transmission is specified.
- Requires Inferno Orange interior trim.

*OnStar services require vehicle electrical system (including battery), wireless service and GPS satellite signals to be available and operating for features to function properly. Subscription Service Agreement required. Call 1-888-4ONSTAR (1-888-466-7827) or visit onstar.ca for OnStar's Terms and Conditions, Privacy Statement and system limitations and details.

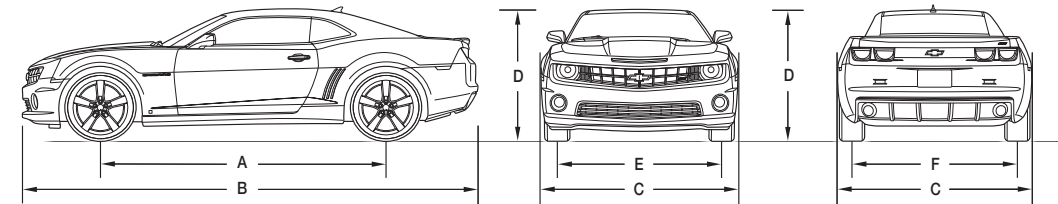
**Turn-by-Turn Navigation not available in certain areas. Availability impacted by some geographical/cellular limitations, advisor-assisted routing available. Visit onstar.ca for coverage map.

[†]All-season tires may not satisfy winter tire requirements in all regions of the country. Tires specifically designed for severe winter conditions and marked with the "winter tire" symbol  may be required during certain months or in certain regions. Contact your Provincial, Municipal or local road authority for information regarding which tires are required in your particular area.

^{††}Installation of 4 snow tires recommended for winter driving conditions.

[‡]Available in 10 Canadian provinces and the 48 contiguous United States. Subscription sold separately after 3 trial months.

DIMENSIONS



EXTERIOR, mm (in.)	
Wheelbase (A)	2852 (112.3)
Length (B)	4836 (190.4)
Width (C)	1918 (75.5)
Height (D)	1377 (54.2)
Front tread (E)	1618 (63.7)
Rear tread (F)	
– Camaro LS, LT	1628 (64.1)
– Camaro SS	1618 (63.7)

INTERIOR, mm (in.) front/rear	
Headroom	950/897 (37.4/35.3)
Legroom	1077/757 (42.4/29.9)
Shoulder room	1444/1080 (56.9/42.5)
Hip room	1436/1255 (56.5/49.4)

CAPACITIES/WEIGHT	
Trunk, L (cu. ft.)	320 (11.3)
Fuel tank, L (imp. gal.)	72 (15.8)
Curb weight (est.), kg (lb.)	
– LS with manual transmission	1718 (3780)
– LS with automatic transmission	1713 (3769)
– 1LT/2LT with manual transmission	1700 (3471)
– 1LT/2LT with automatic transmission	1705 (3750)
– 1SS/2SS with manual transmission	1755 (3860)
– 1SS/2SS with automatic transmission	1779 (3913)

TOWING	
3.6L V6 VVT; 3.27 final drive ratio; 454 kg (1000 lb.) maximum gross trailer weight ^{††}	
6.2L LS3 V8; 3.45 final drive ratio; 454 kg (1000 lb.) maximum gross trailer weight ^{††}	
6.2L L99 V8; 3.27 final drive ratio; 454 kg (1000 lb.) maximum gross trailer weight ^{††}	

^{††}When properly equipped. Includes weight of trailer, cargo, passengers and equipment. All towing recommendations are subject to change. Trailer tongue load should be 10% of the maximum trailer weight but should not exceed the load rating specified for that vehicle, engine or hitch combination. See your dealer or refer to the Camaro Owner's Manual for details.

BACKED THE WAY THEY ARE BUILT

First we build our vehicles to achieve world-class quality standards and to offer the dependability Chevrolet is famous for. Then we stand behind our vehicles with the backing of the best coverage in Canada:

- 3-year/60,000 km New Vehicle Limited Warranty*
- 5-year/160,000 km Powertrain Component Limited Warranty, with \$0 deductible on repairs and the warranty is fully transferable at no charge*
- 5-year/160,000 km Courtesy Transportation*
- 5-year/160,000 km 24/7 Roadside Assistance*
- 6-year/160,000 km rust-through perforation coverage*
- 8-year/130,000 km coverage on catalytic converters and powertrain control modules (PCMs)*

*Whichever comes first. Conditions and limitations apply. See dealer for details.

OTHER OWNERSHIP PRIVILEGES AND PROGRAMS:†

- **GM Protection Plan (GMPP)** – the only extended service plan backed by the resources and commitment of General Motors, GMPP may be purchased at the time of sale or subsequently during the New Vehicle Limited Warranty period
- **GM Goodwrench Service** – with GM-certified technicians and GM-approved parts, nobody knows your GM vehicle better.
†Conditions and limitations apply.

TO HELP YOU PURCHASE A NEW VEHICLE:

- **GMAC Express Credit Application** – a convenient way to get pre-approved credit towards the purchase of your next GM vehicle
- **GMAC Purchase Financing** – on-the-spot financing at your GM dealership!†
- **GM Student Bonus Program** – GM will cover the first two purchase finance payments on eligible new GM vehicles for students and recent graduates of high school, college or university!†
- **The GM Card** – eligible cardholders may be able to redeem up to \$3500 on GM Card® Earnings toward the Total Purchase Price on selected vehicles. For more information on The GM Card, please call 1-800-461-3279!†

†Conditions and limitations apply. ††Subject to eligibility.

INFORMATION RESOURCES:

You can find more information about these programs from your GM dealer, or at these information centres:

- The GM website at gm.ca
- The GM Customer Communication Marketing Centre at **1-800-GM-DRIVE (1-800-463-7483 or 1-800-263-3830** for TDD users)
- For information about GMAC, visit gmac.ca or call **1-800-616-4622**.

A WORD ABOUT THIS BROCHURE

Some of the equipment shown or described throughout this brochure may be available at extra cost. We have tried to make this brochure comprehensive and factual. We reserve the right, however, to make changes at any time, without notice, in prices, colours, materials, equipment, specifications, models and availability. Specifications, dimensions, measurements, ratings and other numbers in this brochure and other printed materials provided at the dealership or affixed to vehicles are approximates based upon design and engineering drawings and prototypes and laboratory tests. Your vehicle may differ due to variations in manufacture and equipment. Since some information may have been adapted since the time of the printing, please check with your GM dealer for complete details. General Motors of Canada Limited reserves the right to lengthen or shorten the model year for any product, for any reason, or to start and end model years at different times.

A WORD ABOUT ASSEMBLY

GM vehicles are equipped with engines and components produced and assembled by different operating units of General Motors, its subsidiaries and suppliers and these engines and components may change or be obtained from different sources from time to time. All such engines and components are approved for use in GM vehicles. Certain equipment ordered may be unavailable at the time of assembly and we suggest that you verify that your vehicle includes the equipment you ordered, or if there are changes, that they are acceptable to you.

TRADEMARKS

The marks appearing in this brochure including, but not limited to: General Motors, GM, the GM emblem, the Chevrolet Accessories logo, Chevrolet, the Chevrolet emblem, Camaro and their respective logos, emblems, slogans and vehicle model names and body designs; and other marks such as Active Fuel Management, Solar-Ray, StabiliTrak and TAPshift are trademarks of General Motors Corporation and/or General Motors of Canada Limited, its subsidiaries, affiliates or licensors.

GMAC is a registered trademark of the General Motors Acceptance Corporation of Canada, Limited.

OnStar and the OnStar emblem are registered trademarks of the OnStar Corporation.

Brembo is a registered trademark of Brembo S.p.A.

Boston Acoustics is a registered trademark of the Boston Acoustic Corp.

The XM name and related logos are trademarks of XM Canada, Canadian Satellite Radio Inc.

Apple and iPod are trademarks of Apple Computer Inc. registered in the U.S. and other countries.

Bluetooth is a registered trademark of Bluetooth SIG Inc.

P Zero is a trademark of Pirelli & C. S.p.A.

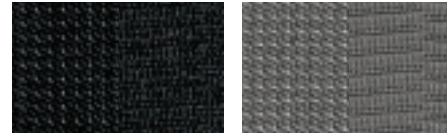
COPYRIGHT

©Copyright 2009 General Motors of Canada Limited. All Rights Reserved. All text, images, graphics, and other materials in this brochure are subject to the copyright and other intellectual property rights of General Motors Corporation and/or General Motors of Canada Limited. These materials may not be reproduced, distributed or modified without the express written permission of General Motors Corporation and/or General Motors of Canada Limited.

Printed in Canada, April 2009.

INTERIOR FABRICS

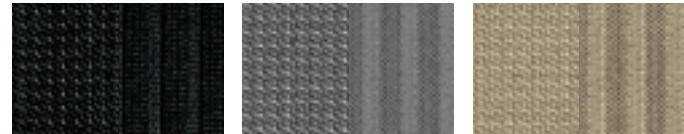
CLOTH



Black Cloth

Gray Cloth

SPORT CLOTH

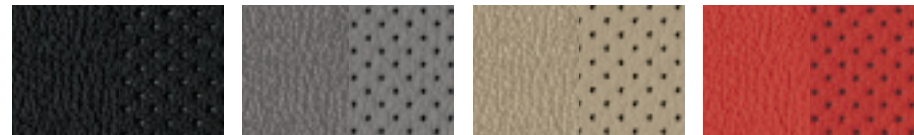


Black Sport Cloth

Gray Sport Cloth

Beige Sport Cloth

LEATHER



Black Leather

Gray Leather

Beige Leather

Inferno Orange Leather*

LS

- AFA – Black Cloth
- AFB – Gray Cloth

1LT

- AFB – Black Sport Cloth
- AFD – Gray Sport Cloth
- AFE – Beige Sport Cloth

2LT

- AFF – Black Leather
- AFG – Gray Leather
- AFH – Beige Leather
- AFI – Inferno Orange Leather*

1SS

- AFJ – Black Sport Cloth
- AFK – Gray Sport Cloth
- AFL – Beige Sport Cloth

2SS

- AFM – Black Leather
- AFN – Gray Leather
- AFO – Beige Leather
- AAY – Inferno Orange Leather*

*Requires available Inferno Orange Trim Package.

EXTERIOR COLOURS



GAN – Silver Ice Metallic



GAP – Imperial Blue Metallic



GAQ – Red Jewel Tintcoat**



GAZ – Summit White†



GBA – Black



GBD – Aqua Blue Metallic



GBV – Cyber Gray Metallic



GCN – Victory Red



GCO – Rally Yellow



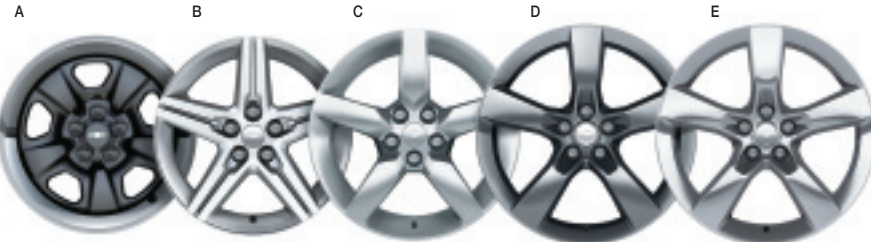
GCR – Inferno Orange Metallic

EXTERIOR/INTERIOR COLOUR COMPATIBILITY

▼ Exterior	▼ Interior				▼ Stripes**†	
	Black	Beige ²	Gray	Inferno Orange ^{3,4}	Arctic White – B7X	Cyber Gray – B7W
GAN – Silver Ice Metallic	X	X	X	X	X	X
GAP – Imperial Blue Metallic	X	X	X	–	X	X
GAQ – Red Jewel Tintcoat**	X	X	X	–	X	X
GAZ – Summit White†	X	X	X	X	–	X
GBA – Black	X	X	X	X	X	X
GBD – Aqua Blue Metallic	X	X	X	–	X	X
GBV – Cyber Gray Metallic	X	X	X	X	X	–
GCN – Victory Red	X	X	X	X	X	X
GCO – Rally Yellow	X	–	X	–	X	X
GCR – Inferno Orange Metallic	X	X	X	X	X	X

** Available at extra cost. † Interim availability. 1 – Available on 2LT and 2SS only. 2 – Not available on LS. 3 – Available on 2LT only. Requires Inferno Orange Trim Package. 4 – Available on 2SS only. Requires Inferno Orange Trim Package.

WHEELS



A – 18" x 7.5" heritage steel

B – 18" x 7.5" painted aluminum

C – 19" x 8" painted aluminum

D – 20" x 8" front and 20" x 9" rear Midnight Silver-finish flangeless aluminum

E – 20" x 8" front and 20" x 9" rear polished aluminum

The exterior colours in this brochure are as close to the actual vehicle production colours as the printing process allows. For more accurate colour samples, ask your sales consultant to see the dealer showroom vehicle colour display.
**Available at extra cost.

