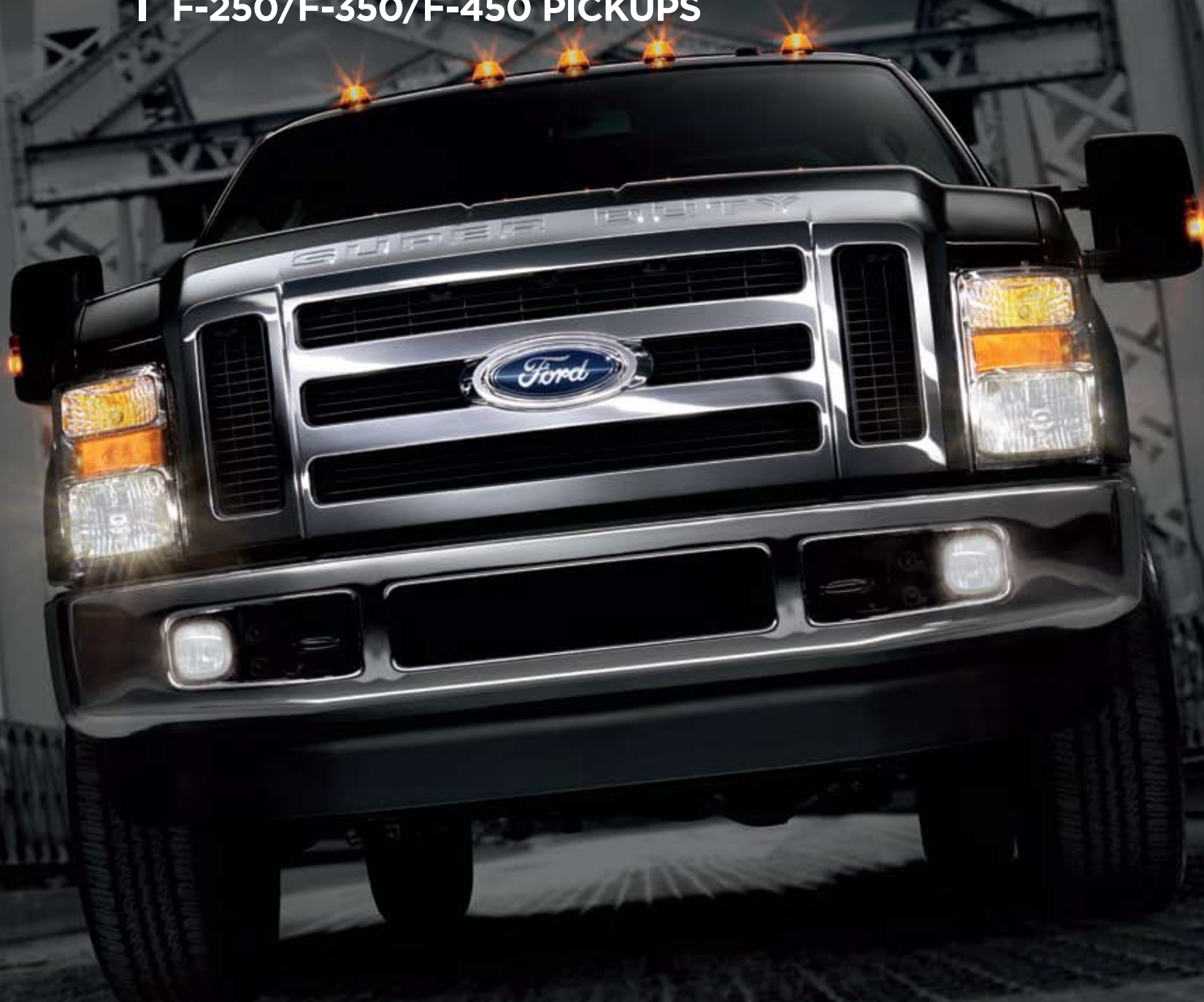
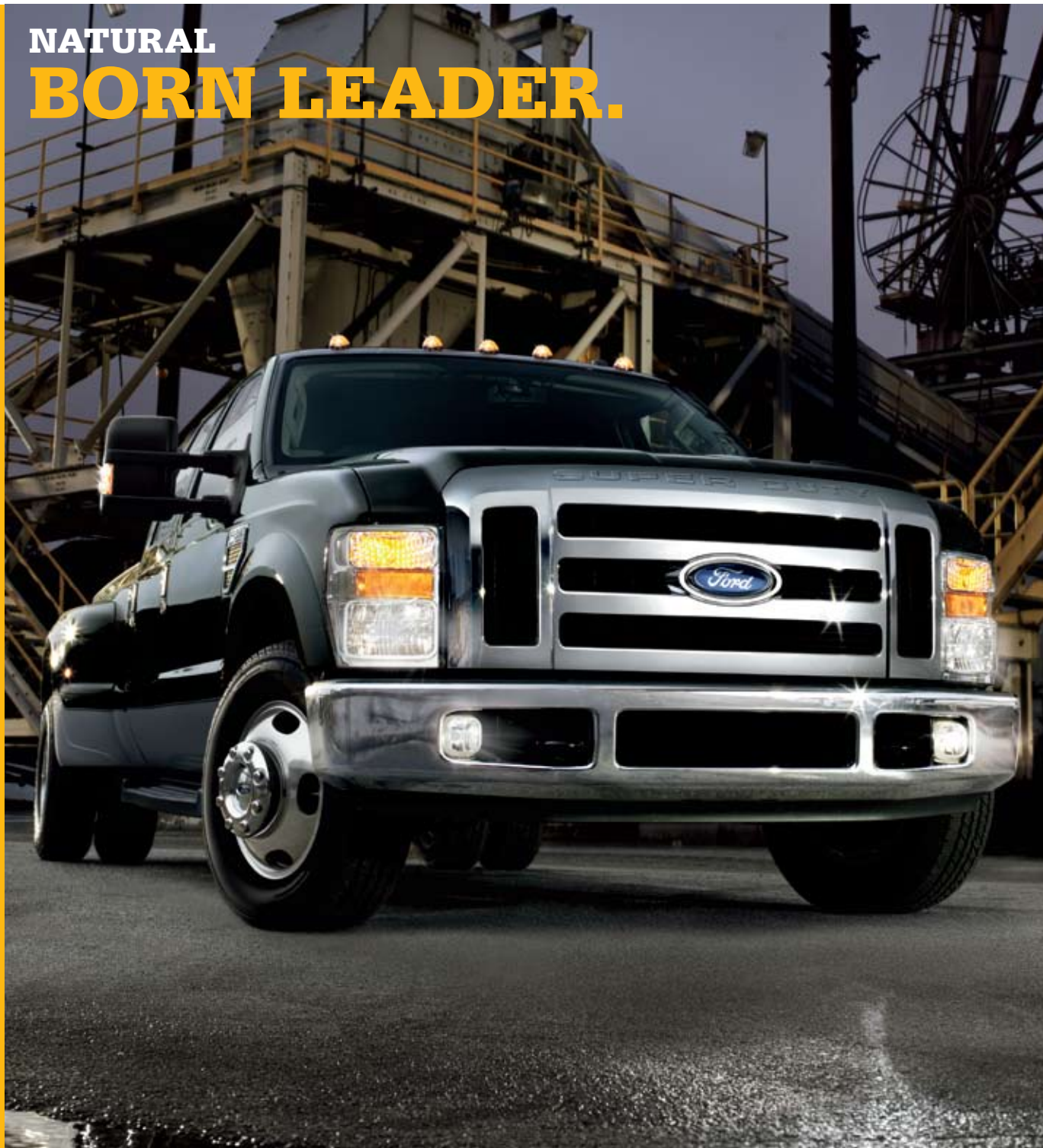


2010 | F-SERIES SUPER DUTY[®]

F-250/F-350/F-450 PICKUPS



NATURAL BORN LEADER.



Muscular sheet metal wrapped around an incredibly strong structure alerts you to the huge capabilities on tap. Best-in-class¹ towing and payload, and the might of an available 6.4L Power Stroke[®] V8 Turbo Diesel are just 2 of its many strengths. The cab offers comfort that's unique in the world of heavy-duty pickups. And no other truck in the class offers so many innovations to make work easier. Super Duty[®] is part of Canada's best-selling line of trucks for 43 years: Ford F-Series².

2010 SUPER DUTY

- 24,600 lbs. (11,158 kg) 5th-Wheel Towing³
- 16,000 lbs. (7257 kg) Conventional Towing³
- 6180 lbs. (2803 kg) Payload³
- 14,500 lbs. (6577 kg) GVWR³
- 33,000 lbs. (14,969 kg) GCWR³
- 6500 lbs. (2948 kg) Front GAWR³
- PowerScope™ Power-Telescoping/-Folding Trailer Tow Mirrors Available
- Tailgate Step Option
- Stowable Bed Extender Option
- Rapid-Heat Supplemental Cab Heater Option
- Quiet Steel[®] in Dash Panel
- Standard Cargo Box Rail Mouldings
- Upfitter Switches Option
- Standard Built Ford Tough[®] Trailer Hitch Receivers on All Models
- 6.4L Power Stroke V8 Turbo Diesel Available
- Outstanding Gas Horsepower & Torque with 6.8L 3-Valve V10



¹Best-in-class payload and towing, GVWR and GCWR when properly equipped. Class is Full-size Pickups over 8500 lbs. (3855 kg) GVWR.

²Based on Canadian Vehicle Manufacturers' Association statistical sales report, December 2008.

³Maximum capability when properly equipped. See your Ford of Canada Dealer for specific equipment and other limitations.

Quiet Steel is a registered trademark of Material Sciences Corporation.

An optional, fully integrated Trailer Brake Controller (TBC)¹ works with the Anti-lock Brake System (ABS) to balance the truck's braking power with electrically actuated trailer brakes. The TorqShift[®] automatic transmission includes Tow/Haul Mode to match transmission operation to the demands of towing and hauling. Developed and refined, these advanced factory-installed towing systems help you tow with confidence.



REAR VIEW CAMERA

This optional system includes a camera in the tailgate handle bezel and a video display to help ease trailer hookup. Available with rearview mirror display or with 6.5-in. LCD display on the optional Navigation System (shown).



TRAILER BRAKE CONTROLLER

A user-friendly display in the instrument cluster message centre indicates output, gain levels and trailer connection status. The system also has a disconnect alarm with message centre warnings.

¹TBC verified to be compatible with electrically actuated drum brakes only.

TOW IN CONTROL WITH FORD TECHNOLOGY.



STANDARD FRONT TOW HOOKS

This closed-loop design has been tested to 125% of the heaviest GVWR with just one hook.

POWERSCOPE™ TRAILER TOW MIRRORS

Designed specifically for Super Duty[®] these optional large mirrors adjust, fold and telescope almost 76 mm (3 in.) at the touch of a switch. They include heated glass, integrated turn signals and clearance lamps. The manually adjustable heated spotter mirrors provide expanded visibility. No other mirror in the class offers this much functionality and convenience. Standard on LARIAT, optional on XLT.

TOUGH TASKS MADE EASIER.



BEST-IN-CLASS MAXIMUM PAYLOAD

When a heavy-duty truck can help you load, access and manage cargo better than any other, it only makes sense that it delivers best-in-class payload¹ capability as well.



¹Class is Full-size Pickups over 8500 lbs. (3855 kg) GVWR.

²F-450 4x2.

TAILGATE STEP (ABOVE)

A handy option that stows in the tailgate. Just take hold of the flip-up grab bar, flip down the skid-resistant step, and climb up into the box.

BED EXTENDER (RIGHT)

This rugged, optional barrier lets you haul with the tailgate down or secure smaller loads with the tailgate up. When not in use, it stows conveniently out of the way, giving you access to the entire cargo box.



KEEPING YOU CONNECTED.



KING RANCH® interior with available equipment.

SIRIUS
SATELLITE RADIO

SYNC
Powered by **Microsoft**

FIND YOUR WAY WITH EASE

An available Navigation System maps routes anywhere in Canada¹ and guides you with audible instructions. You can even watch DVDs when in "Park." It includes an in-dash touch screen, a single-CD/DVD player with MP3 capability, AM/FM stereo, USB port, voice-activated controls, digital clock, and 8 speakers with a subwoofer.



ENHANCED FORD SYNC® WITH 911 ASSIST™

You talk. SYNC listens.TM Available Ford SYNC voice-activated, in-vehicle communications and entertainment system works with your paired Bluetooth®-enabled mobile phone to make calls, and your digital media player or thumb drive to play music – all with the touch of a button or a voice command.² 911 Assist can make an emergency call from your phone if any airbag has deployed.³



SIRIUS® SATELLITE RADIO

Lock on to your favourite channel wherever you drive with available SIRIUS Satellite Radio. Surf up to 120 channels including 100% commercial-free music, plus the best sports, news, talk and entertainment, all across Canada. It includes a 6-month prepaid subscription.⁴

¹See your Ford of Canada Dealer for mapping details.

²Driving while distracted can result in loss of vehicle control. Only use mobile phones and other devices, even with voice commands, when it is safe to do so. Microsoft is a registered trademark of Microsoft Corporation. The Bluetooth word mark is a trademark of the Bluetooth SIG, Inc.

³The vehicle's electrical system (including the battery), the wireless service provider's signal, and a connected mobile phone must all be available and operating for 911 Assist to function properly. These systems may become damaged in a crash. The paired mobile phone must be turned on, connected to SYNC, and the 911 Assist feature enabled in order for 911 to be dialed.

⁴See your Ford of Canada Dealer or contact SIRIUS at 1-888-539-7474 for more information.

The Power Stroke® is the most powerful Ford diesel pickup powerplant ever offered, with 100% of its 650 lb.-ft. of torque available at just 2000 rpm.¹ Cutting-edge fuel injection helps deliver optimal fuel efficiency and cold-start capability.

FORD CLEAN DIESEL TECHNOLOGY™

This combination of advanced systems helps reduce emissions to levels on par with equivalent gasoline engines.

- HIGH-PRESSURE COMMON-RAIL FUEL INJECTION
- OIL-JET PISTON COOLING
- EXHAUST GAS RECIRCULATION (EGR)
- ULTRA-LOW-SULFUR DIESEL FUEL (ULSD)
- DIESEL OXIDATION CATALYST AND DIESEL PARTICULATE FILTER (SHOWN RIGHT)

COMPREHENSIVE COOLING

This system also cools F-550 Super Duty.® The large radiator and the water pump flow rate ensure efficient cooling. There are 6 different radiators (coolers) — including one for the fuel-cooling system — designed to support engine emissions and enhance durability, power and torque.

- | | |
|--------------------------------|-------------------------------------|
| 1 Fuel Heat Exchanger | 5 Power Steering Cooler |
| 2 Charged Air Cooler | 6 Air Conditioning Condenser |
| 3 Transmission Cooler | 7 Engine-Mounted Fan Shroud |
| 4 Large Engine Radiator | |

DUAL-SEQUENTIAL TURBOCHARGERS

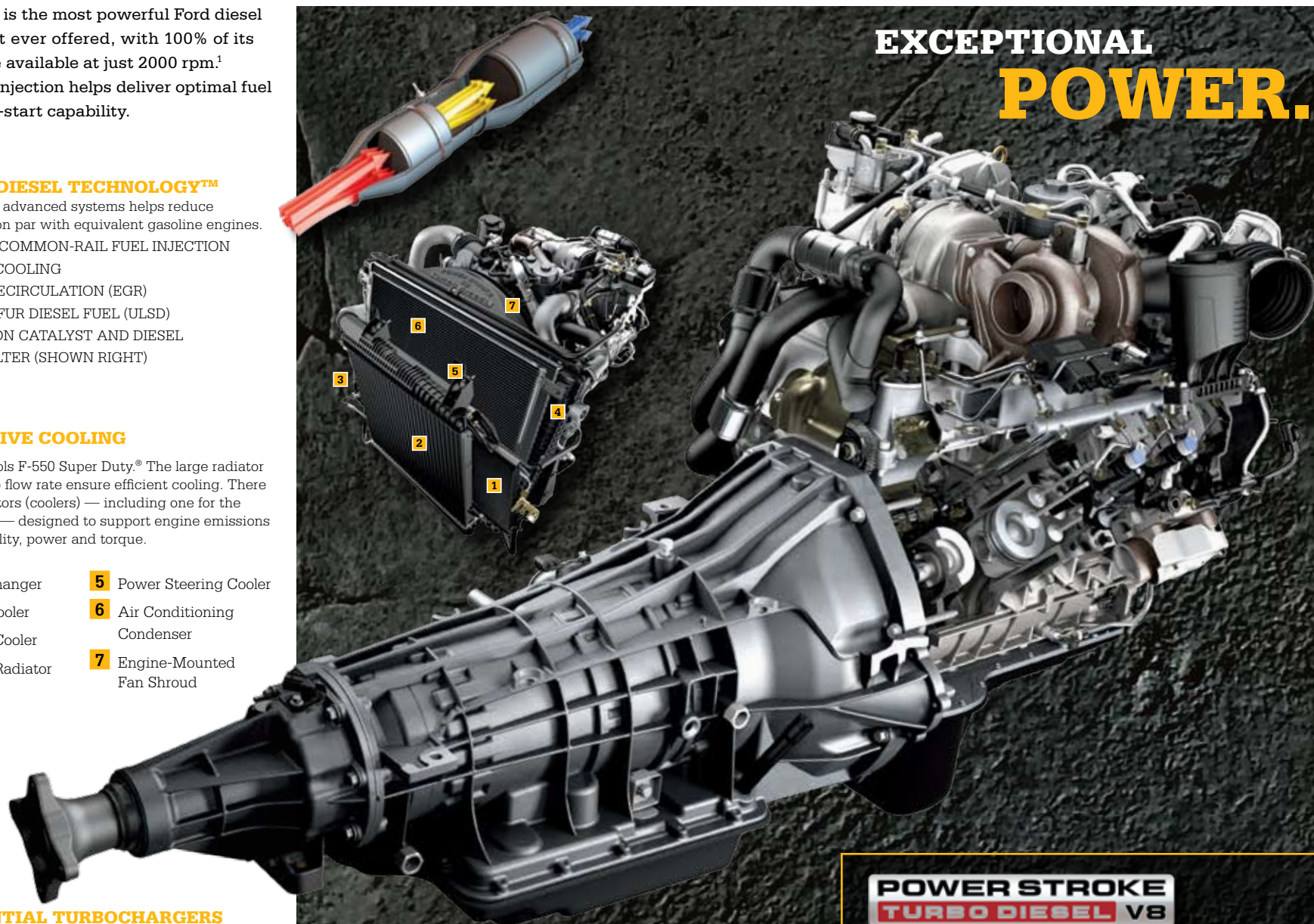
Flatten any mountain pass with the dual sequential turbocharging system. A high-pressure Electronic Variable Response Turbo (EVRT®) spools up first to provide fast transient engine response. A secondary low-pressure turbo provides added airflow at peak power and torque.

PROVEN GAS POWER

Only Super Duty offers you different gas power solutions to suit your needs – including a 5.4L V8 or the only optional 6.8L V10 gas powerplant in the class.

¹Governed at 325 hp @ 3000 rpm and 600 lb.-ft. of torque @ 2000 rpm on F-450.

EXCEPTIONAL POWER.



POWER STROKE
TURBO DIESEL V8

POWER STROKE AT A GLANCE

- Up to 350 hp @ 3000 rpm and up to 650 lb.-ft. of torque @ 2000 rpm¹
- High-Pressure Common-Rail Fuel Injection
- Micro-Pressure Piezo-Electric Injectors
- Quick Cold Start Down To -29°C (-20°F)
- The Quietest Ford Diesel Pickup on the Road

PROVEN STRENGTH.

Only a foundation engineered and built like this can deliver true Super Duty® capability. It's a key component in legendary Ford durability, and it's tuned to deliver the quiet ride, stable handling, and road-going performance that's unique to Ford trucks.



A. BUILT FORD TOUGH® HITCH RECEIVER comes standard and it's rated to your truck's capabilities.

B. RUGGED CROSSMEMBERS are riveted, welded, or both to optimize frame capability.

C. LONG REAR SPRINGS measure over 66 in. (1675 mm) to help manage torque without compromising comfort.

D. STAGGERED REAR SHOCKS help control axle motions for a smooth ride and confident handling — loaded or unloaded.

E. REAR SUSPENSION allows model-specific spring and axle ratings for a wide range of capacities. Max. GVWRs range from 8800 lbs. to 14,500 lbs. (3992 kg to 6577 kg). Max. GCWRs range from 16,000 lbs. to 33,000 lbs. (7257 kg to 14,969 kg).

F. THICK C-CHANNEL FRAME of up to 6.7-mm steel is electrocoated to promote corrosion resistance.

G. MICRO-CELLULAR URETHANE BODY MOUNTS compress proportionally to the load on rough roads and during cornering for controlled body motions and a comfortable ride.

H. BODY MOUNTING BOLTS are driven from the bottom up, a feature many aftermarket builders find desirable.

I. ENGINE TRACTION CONTROL option is a driver-selectable function that can automatically step in to reduce power when it detects a loss of traction.

J. BEST TURNING DIAMETER F-450 Wide-Track 4x4 Pickups boast the best Crew Cab Long Box turning diameter of any truck in their class.

K. OUTSTANDING BRAKING POWER is standard with a 4-wheel Anti-lock Brake System (ABS). Huge vented rotors and dual-piston calipers provide strong, consistent stops, even when moving the biggest loads.

L. HUGE FRONT CONTROL ARMS support best-in-class maximum front GAWRs of 6500 lbs. (2948 kg) on F-450 4x4, and 6000 lbs. (2722 kg) on F-450 4x2.

HIGHEST GVWRs Properly equipped, F-450 DRW 4x2 can take on passengers, payload, fuel and cargo up to 6180 lbs. (2803 kg). A properly equipped F-350 DRW 4x2 outperforms its direct competitors with a maximum load of up to 5730 lbs. (2599 kg).

THE LINE STARTS HERE.



F-250 XLT Crew Cab 4x4 in Vermillion Red with available equipment (above).
F-250 XL Regular Cab in Oxford White (right).



XL AND XLT

XL is the bedrock of the line, and it can be equipped to move the heaviest loads. When you're looking for a work truck with all the capabilities, plus standard features that can get you comfortably through the work week, look no further than Super Duty XL.

Available with every drivetrain, cab style and box, XLT is the most versatile Super Duty.® A hefty list of standard features includes an AM/FM stereo/single-CD player with MP3 capability, plus a chrome grille and bumpers. For added personal space, choose the optional cloth luxury front seats with centre console.



XLT Crew Cab interior in Camel with optional front seats and centre console.

SUPER DUTY® SPECIAL EDITIONS.



F-350 XLT Crew Cab 4x4 in Dark Blue Pearl with XTR Package and available equipment.

XTR, XTR PLUS AND CABELA'S.

Dress up your XLT with the XTR Package. It adds a chrome billet-style grille along with chrome tow hooks, mirror caps and exhaust tip. You also get 18-in. bright machined cast-aluminum wheels, the Advanced Security Group, PowerScope™ trailer tow mirrors and more. XTR Plus adds: 6-way power, heated, leather-trimmed driver and front-passenger seats; Ford SYNC®; Reverse Sensing System; power-adjustable pedals; and more.

Cabela's® takes XLT even further, with two-tone exterior paint; Cabela's box decals, badging, hub caps and bed mat; SYNC; a leather-trimmed interior with heated front seats; an AM/FM stereo/6-disc in-dash CD changer with MP3 capability and 4 speakers; and much more.



XTR Plus interior in Stone Leather trim with available equipment.

THIS TRUCK HAS ITS PRIVILEGES.



F-350 LARIAT Crew Cab DRW 4x4 in Black with available equipment.



LARIAT interior in Camel with available equipment.

LARIAT

Tow and haul just about anything to just about anywhere in a truck that surrounds you with leather-trimmed seating, Dual-zone Electronic Automatic Temperature Control, power conveniences, an AM/FM stereo/6-disc in-dash CD changer with MP3 capability, Ford SYNC® and SIRIUS Satellite Radio with a prepaid 6-month subscription. Rugged forged-aluminum or forged polished-aluminum wheels, plus PowerScope™ trailer tow mirrors, make LARIAT tow-ready. In Crew Cab models, the FlexFold® 60/40 split rear bench with its flat steel loadfloor offers you extra interior cargo space. LARIAT is the perfect marriage of hard work and luxury, with legions of satisfied owners who consider it their reward for jobs well done.

ROAM THE RUGGED RANGE.




F-450 KING RANCH® Crew Cab 4x4 in Forest Green/Pueblo Gold Two-Tone.



KING RANCH® interior with available equipment.

KING RANCH

This top-of-the-line Super Duty® wears the legendary "Running " brand. It includes LARIAT standard features, plus exterior appointments such as forged painted-aluminum wheels (SRW) or forged polished-aluminum wheels (DRW) with KING RANCH® centre caps, two-tone paint with Pueblo Gold lower accents, and KING RANCH® badges. Inside, you're surrounded by the finest accommodations: seats trimmed with rich Chaparral leather; a Premium Sound System with AM/FM stereo/6-disc in-dash CD changer, MP3 capability, digital clock and 8 speakers with subwoofer; plus a full complement of memory power accessories. KING RANCH® insignias on every seatback provide the finishing touch.

ACCESSORIES

- A.** All-Weather Floor Mats
- B.** Hood and Side Window Deflectors
- C.** Splash Guards
- D.** Bi-Directional Remote Start System
- E.** Keyless Entry Keypad
- F.** Electrochromic Mirrors
- G.** Garmin® Portable Navigation Systems¹

Also available:

- Ashcup/Coin Holder/Smoker's Pack
- Bed Extender
- Bed Mat
- Bed Rail Protector
- Bedliner
- Exhaust Tip
- Hard Folding Tonneau Cover¹
- Retractable Bed Hooks
- Soft Folding Tonneau Cover¹
- Stainless Steel Wheel Covers¹
- Trailer Hitch Balls/Draw Bars
- Trailer Tow Mirrors
- Tubular Step Bars
- Vehicle Security System
- Wheel Locks

¹Ford Licensed Accessories.



Ford of Canada warrants that its authorized Dealers will repair or replace any Genuine Ford Accessory that is properly installed by the authorized Dealer that sold the accessory and found to be defective in factory-supplied materials or workmanship. The accessory will be warranted for whichever provides you the greatest benefit: 12 months/20,000 km (whichever occurs first), or the remainder of your 36-month/60,000-km (whichever occurs first) Basic Coverage in the New Vehicle Limited Warranty. Contact your local Ford of Canada Dealer for details.

Ford Licensed Accessories (FLA) are warranted by the accessory manufacturer's limited warranty. The warranty coverage will vary by accessory manufacturer. Contact your local Ford of Canada Dealer for details regarding the accessory manufacturer's limited warranty and/or for a copy of the FLA product limited warranty offered by the accessory manufacturer.

Ford ESP PremiumCare Plan. Depending on the Ford ESP Plan you select, some Dealer-installed Genuine Ford Accessories can be covered up to 7 years or 150,000 km. See your Ford of Canada Dealer for details.

SPECIFICATIONS

At a Glance

F-250

MAXIMUM CAPABILITIES:¹ lbs. (kg)

- 16,500 (7484) 5th-Wheel Towing; 12,500 (5670) Conventional Towing
- 3220 (1461) Payload
- 23,000 (10,433) GCWR; 10,000 (4536) GVWR
- Engines: 5.4L V8; 6.8L V10; 6.4L Power Stroke® V8 Turbo Diesel
- Drivelines: 4x2 or 4x4; Single Rear Wheel (SRW) only
- Bodies: Regular Cab, SuperCab, Crew Cab
- Cargo Box: 6.75 ft. (2057 mm) or 8 ft. (2438 mm)
- Trim Series: XL, XLT, Cabela's®, LARIAT

F-350

MAXIMUM CAPABILITIES:¹ lbs. (kg)

- 18,800 (8528) 5th-Wheel Towing; 15,000 (6804) Conventional Towing
- 5730 (2599) Payload
- 26,000 (11,793) GCWR; 13,000 (5897) GVWR
- Engines: 5.4L V8; 6.8L V10; 6.4L Power Stroke V8 Turbo Diesel
- Drivelines: 4x2 or 4x4; SRW and Dual Rear Wheel (DRW)
- Bodies: Regular Cab, SuperCab, Crew Cab
- Cargo Box: 6.75 ft. (2057 mm) or 8 ft. (2438 mm)
- Trim Series: XL, XLT, Cabela's, LARIAT

F-450

MAXIMUM CAPABILITIES:¹ lbs. (kg)

- 24,600 (11,158) 5th-Wheel Towing; 16,000 (7257) Conventional Towing
- 6180 (2803) Payload
- 33,000 (14,969) GCWR; 14,500 (6577) GVWR; 6500 (2948) front GAWR
- Engine: 6.4L Power Stroke V8 Turbo Diesel only
- Drivelines: 4x2 or 4x4 DRW only
- Body: Crew Cab
- Cargo Box: 8-ft. (2438 mm) only
- Trim Series: XL, XLT, LARIAT

¹Maximum capability when properly equipped. See your Ford of Canada Dealer for specific equipment and other limitations.

Standard Features

Safety/Security

4-wheel power disc brakes with Anti-lock Brake System (ABS)
Airbags ² — Driver and right-front-passenger
Alert chimes — Headlamps-on, key-in-ignition and door ajar
Belt-Minder® front safety belt reminder
Brake/shift interlock
Child-safety seat top tether anchors (Regular Cab front passenger and all rear seating positions)
Fuel pump inertia shutoff switch
Height-adjustable safety belts — Front-outboard
Locking tailgate
Passenger airbag ² deactivation switch (Regular Cab, SuperCab)
Safety belt energy-management retractors — Front-outboard positions
SecuriLock® passive anti-theft engine immobilizer system
Side-intrusion door beams
SOS Post-Crash Alert System™ ³

Mechanical

5.4L 3-valve SOHC V8 engine (F-250, F-350)
6.4L OHV 32-valve Power Stroke V8 Turbo Diesel engine (F-450)
TorqShift® 5-speed automatic transmission with Tow/Haul Mode
Battery saver
Engine block heater
Fail-safe engine cooling system (gas engines)
Fuel tank — 115-litre capacity with 6.75-ft. box, 143-litre capacity with 8-ft. box
Limited-slip rear axle
Power steering
Quick-release tailgate with Tailgate Assist
Spare tire/wheel/jack with lock — Conventional with underframe carrier (crank-down type)
Stabilizer bar — Front
Stabilizer bar — Rear (DRW only)
Stainless steel exhaust system (major components)
Stationary Elevated Idle Control (SEIC) ⁴
Steering damper
Styleside box — 6.75-ft. SRW and 8-ft. SRW/DRW ⁵

Interior

Air conditioning
Assist and ride handles
Coat hooks — 1 (Regular Cab), 2 in rear of cab (SuperCab and Crew Cab)
Dome light (front, and rear with Crew Cab)
Integrated Trailer Brake Controller (TBC) ⁶ (F-450)
Flip-open rear quarter windows (SuperCab)
Message centre with odometer, trip odometer, engine-hour meter and warning messages
Power points — 2 on instrument panel
Steering wheel — Black urethane

Exterior

Bumpers — Front and rear step
Cargo box — Partitionable and stackable
Cargo box lamp — Integrated with centre high-mounted stop lamp
Cargo box rail and tailgate top mouldings
Cargo box stake pockets
Cargo tie-down hooks — 4 in 6.75-ft. box, 6 in 8-ft. box
Solar-tinted glass
Tow hooks — 2 in front
Trailer hitch receiver — 12,500 lbs. (5670 kg), 51-mm (2-in.) Built Ford Tough® (SRW/F-350 DRW 5.4L)
Trailer hitch receiver — 15,000 lbs. (6804 kg), 64-mm (2.5-in.) Built Ford Tough (F-350 DRW 6.8L/6.4L only)
Trailer hitch receiver — 16,000 lbs. (7257 kg), 64-mm (2.5-in.) Built Ford Tough (F-450 only)
Trailer tow — 7-/4-pin connector and trailer brake wiring kit (in-cab, no controller)
Windshield wipers — Intermittent

²Always wear your safety belt and always deactivate the passenger airbag when using a rear-facing child-safety seat in Regular Cab and SuperCab models. Always wear your safety belt and always secure children in the rear seat in Crew Cab models.

³SOS hardware may become damaged or the battery may lose power in a crash, which could prevent operation. Not all crashes will activate an airbag or safety belt pretensioner.

⁴Final-stage manufacturer must supply control switches.

⁵DRW available on F-350 and F-450 models only.

⁶TBC verified to be compatible with electrically actuated drum brakes only.

SPECIFICATIONS

Model-Specific Features

Each series includes the standard equipment of the previous series, except where additions/exceptions are noted. Vehicles shown may contain optional equipment.



XL

4-wheel Anti-lock Brake System (ABS) • Stationary Elevated Idle Control (SEIC)¹ • Built Ford Tough® trailer hitch receiver, 7-pin wiring harness with relays and 7-/4-pin connector • Black-painted bumpers • Black grille • Front fender vents • Solar-tinted glass • Black door and tailgate handles • Sealed-beam halogen headlamps • Black telescoping manual fold-away trailer tow sideview mirrors with manual glass • Quick-release tailgate with Tailgate Assist • Front tow hooks • 17-in. argent-painted steel wheels (F-250/F-350), 19.5-in. forged polished-aluminum wheels (F-450) • Fixed rear window • Manual air conditioning • Black instrument cluster with Black gauges and White graphics • Message centre • AM/FM stereo with digital clock and 2 speakers • Black full-length vinyl floor covering • Heavy-duty vinyl reclining front seat • Black urethane steering wheel • Sun visors with passenger mirror • Day/night rearview mirror • SecuriLock® passive anti-theft engine immobilizer system



XLT

Chrome-steel bumpers • Chrome grille with Medium Platinum insert • Dual-beam jewel-effect headlamps • Underhood engine-compartment lamp • Black telescoping manual fold-away trailer tow sideview mirrors with power/heated glass • Privacy glass • 17-in. 5-spoke cast-aluminum wheels (F-250/F-350 SRW), 17-in. argent-painted steel wheels (F-350 DRW) • Black air vents with chrome trim rings • AM/FM stereo with single-CD/MP3 player and 4 speakers • SIRIUS Satellite Radio • Auxiliary audio input jack • Cruise control • Colour-coordinated carpeting • Colour-coordinated carpeted floor mats • Power front windows (includes rear windows on Crew Cab), door locks and accessory delay • Cloth 40/20/40 split front seat with centre armrest, cupholders and storage • Driver lumbar support • Black tilt urethane steering wheel



LARIAT

Black moulded cab steps • 18-in. premium forged-aluminum wheels with bright centre caps (F-250/F-350 SRW) • Fog lamps • Body-colour door handles • Power-sliding rear window • PowerScope™ trailer tow mirrors • Advanced Security Group (includes autolamp/rainlamp, autolock, illuminated-entry system, remote keyless-entry system and SecuriCode™ keyless-entry keypad) • Reverse Vehicle Aid Sensor • Dual-zone Electronic Automatic Temperature Control • Enhanced message centre with trip computer • Auto-dimming rearview mirror • Power driver and front-passenger seats • Heated front seats • Premium leather-trimmed 40/20/40 front seat with centre armrest • Driver Memory Seating System (includes memory seat, sideview mirrors and pedals) • Silver-metallic air vents with chrome trim rings • Overhead console with sunglasses and garage door opener storage • Colour-coordinated leather-wrapped steering wheel with secondary audio controls • AM/FM stereo/6-disc in-dash CD changer with MP3 capability, clock and 4 speakers • Ford SYNC® • Woodgrain-style instrument panel insert • Metallic-faced instrument cluster with cream gauges • Sun visors with illuminated mirrors • Universal Garage Door Opener • Integrated Trailer Brake Controller



¹Final-stage manufacturer must supply control switches.

AVAILABLE PACKAGES



CABELA'S®



FORD HARLEY-DAVIDSON™



XTR PLUS

Features & Options

XL
XLT
LARIAT

Mechanical

- ● ● 5.4L 3-valve SOHC V8 engine (not available on DRW Crew Cab)
- ○ ○ 6.8L 3-valve SOHC V10 engine (standard on F-350 DRW Crew Cab)
- ○ ○ 6.4L OHV 32-valve Power Stroke® V8 Turbo Diesel engine (standard on F-450)
- ○ ○ Manual 4-wheel-drive system with manual locking hubs (4x4 models only)
- ● ● Electronic Shift-On-the-Fly (ESOF) 4-wheel-drive system with auto/manual locking hubs (4x4 models only)
- — — 17-in. argent-painted steel wheels — 5 (F-250/F-350 SRW)
- ● — 17-in. argent-painted steel wheels — 7 (F-350 DRW)
- ● — 17-in. 5-spoke cast-aluminum wheels — 4 (F-250/F-350 SRW)
- ○ ● 17-in. forged polished-aluminum wheels — 4 (F-350 DRW)
- — — 18-in. argent-painted steel wheels — 4 (F-350 SRW)
- ○ — 18-in. bright machined cast-aluminum wheels — 4 (F-250/F-350 SRW)
- — ● 18-in. premium forged-aluminum wheels with bright centre caps — 4 (F-250/F-350 SRW)
- ● ● 19.5-in. forged polished-aluminum wheels — 4 (F-450)
- ● ○ 20-in. forged polished-aluminum wheels — 4 (F-250/F-350 SRW 4x4 only)
- ● — LT245/75R17 all-season BSW tires — 5 (F-250/F-350 SRW)
- — — LT245/75R17 all-terrain BSW tires — 5 (F-250)
- ● ● LT275/65R18 all-season BSW tires — 5 (F-250/F-350 SRW 4x2)
- ○ ● LT275/70R18 all-season BSW tires — 5 (F-250/F-350 SRW 4x4)
- ○ ○ LT275/70R18 all-terrain BSW tires — 5 (F-250/F-350 SRW 4x4)
- ○ ○ LT275/70R18 all-terrain OWL tires — 4 (F-250/F-350 SRW 4x4)
- ○ ○ LT275/65R20 all-terrain BSW tires — 4 (F-250/F-350 SRW 4x4)
- ○ ○ LT275/65R20 all-terrain OWL tires — 4 (F-250/F-350 SRW 4x4)
- ● ● LT245/75R17 all-season BSW tires — 7 (F-350 DRW)
- ○ ○ LT245/75R17 all-terrain BSW tires — 7 (F-350 DRW)
- ● ● 225/70R19.5 all-season BSW tires — 7 (F-450)
- ○ ○ 225/70R19.5 (front all-season/rear traction) BSW tires — 6 (F-450)
- ○ ● Advanced Security Group — Includes autolamp/rainlamp, autolock, illuminated-entry system, remote keyless-entry system with 2 key fobs and SecuriCode™ keyless-entry keypad
- ○ ○ Alternator — Single, extra-heavy-duty 200-amp (diesel engine only)
- ○ ○ Alternators — Dual, 320-amp total (diesel engine only)
- ● ● Integrated Trailer Brake Controller¹ (standard on F-450)
- ● ● Power TakeOff (PTO) provision (PTO obstructed by catalyst placement on 5.4L and 6.8L engines)
- ○ ● Reverse Vehicle Aid Sensor (n/a with pickup box delete)
- ○ ○ Traction Control

Seating

- — — Front reclining seat — HD vinyl
- — — Front reclining seat — HD cloth
- ● ● Front seat — 40/20/40 split with centre armrest, cupholders and storage (XL — HD vinyl or cloth; XLT — cloth; LARIAT — leather-trimmed)
- — — Front bucket seats — HD vinyl
- — — Front bucket seats — HD cloth
- ○ — Front premium cloth seats with centre console
- — ○ Front leather-trimmed seats with centre console
- ● ● Heated seats — Driver and front-passenger; 2 settings
- ○ ● Power 6-way driver seat (and front-passenger seat on SuperCab and Crew Cab)
- ● ● Rear folding bench seat (SuperCab and XL Crew Cab)
- ● ● Rear FlexFold® 60/40 split fold-flat bench seat, steel loadfloor, bag hooks, dual integrated cupholders and tray, and 2 outboard head restraints (Crew Cab)

● Standard ● Select Availability ○ Optional — Not Available

¹TBC verified to be compatible with electrically actuated drum brakes only.

Features & Options Continued

	XL	XL T	LARIAT
Interior			
⓪ ● ●			Accessory delay for power features
⓪ — —			Air conditioning delete
● ● —			Air conditioning — Manual
— — ●			Air conditioning — Dual-zone Electronic Automatic Temperature Control
● — —			AM/FM stereo with digital clock and 2 speakers
⓪ ● —			AM/FM stereo/single-CD player with MP3 capability, digital clock and 4 speakers
— ⓪ ●			AM/FM stereo/6-disc in-dash CD changer with MP3 capability, digital clock and 4 speakers (includes leather-wrapped steering wheel with secondary audio controls on XLT)
— ⓪ ⓪			Premium Sound System with AM/FM stereo/6-disc in-dash CD changer, MP3 capability, digital clock and 8 speakers with subwoofer (n/a with Navigation System) (XLT requires Cabela's® Package)
— ⓪ ⓪			Navigation System with SIRIUS Satellite Radio, AM/FM stereo/single-disc CD player with USB port, voice-activated controls, MP3 capability, digital clock and 8 speakers with subwoofer (XLT requires Cabela's Package)
⓪ ⓪ ●			SIRIUS Satellite Radio (requires CD; not available on Regular Cab)
— ⓪ ●			Ford SYNC® voice-activated, in-vehicle communications and entertainment system — Includes USB port, upgraded rearview mirror with microphone, leather-wrapped steering wheel with secondary audio controls (required with Navigation System; XLT requires power seats)
⓪ ● ●			Auxiliary audio input jack
⓪ — —			Radio delete
⓪ ● ●			Cruise control (requires tilt steering wheel)
— ● ●			Floor mats — Colour-coordinated carpet
— ⓪ ⓪			Floor mats — Black all-weather
● ⓪ —			Carpet delete (n/a with all-weather floor mats on XLT)
— ⓪ ●			Power-adjustable brake and accelerator pedals
⓪ ● ●			Power door locks
⓪ ● ●			Power windows with one-touch-down driver-window feature
⓪ ⓪ ⓪			Rapid-Heat Supplemental Cab Heater (requires diesel engine with air conditioning and alternator upgrade)
— ⓪ ⓪			Rear View Camera (requires SYNC)
⓪ ● ●			Steering wheel — Tilt
— — ●			Universal Garage Door Opener
⓪ ⓪ ⓪			Upfitter switches (4) — Located on instrument panel
Exterior			
— ⓪ ⓪			Bodyside mouldings — Body-colour (SRW only)
● — —			Bumpers — Black-painted with grained top cover
⓪ ● ●			Bumpers — Chrome-steel with grained top cover
⓪ ⓪ ●			Cab steps — Black moulded (standard on F-450)
— ⓪ —			Cab steps — 4-in. chrome tubular (Regular Cab only)
— ⓪ ⓪			Cab steps — 5-in. chrome tubular (SuperCab and Crew Cab only)
— ⓪ ●			Fog lamps
● — —			Headlamps — Sealed-beam halogen
⓪ ● ●			Headlamps — Dual-beam jewel-effect
⓪ ● ●			Lamp — Underhood engine-compartment
● — —			Mirrors — Manual glass, manually telescoping trailer tow with 2-way fold
⓪ ● —			Mirrors — Power/heated glass with integrated clearance lamps and turn signal indicators, manually telescoping trailer tow with 2-way fold
— ⓪ ●			Mirrors — PowerScope™ power-telescoping/-folding trailer tow with power/heated glass, heated manual spotter mirrors, and integrated clearance lamps and turn-signal indicators
— ⓪ ⓪			Moonroof — Power-sliding (Crew Cab only) (n/a with Rear-Seat DVD Entertainment System) (XLT requires Cabela's Package)
⓪ ⓪ —			Pickup box delete (requires 8-ft. box; n/a with 6.8L engine or Rear View Camera)
— ● ●			Privacy glass
⓪ ⓪ ⓪			Roof clearance lamps (standard on DRW)

	XL	XL T	LARIAT
Exterior Continued			
⓪ ⓪ —			Sliding rear window — Manual
— — ●			Sliding rear window — Power
— ⓪ ⓪			Stowable bed extender (F-250/F-350 SRW only)
⓪ ⓪ ⓪			Tailgate Step — Includes Tailgate Assist and handle
— — ⓪			Two-tone paint — Lower-accent
— — ⓪			Wheel-lip mouldings (optional on LARIAT with two-tone paint only)
Packages			
⓪ ⓪ ⓪			4491-kg (9900-lb.) GVWR Package (F-250/F-350 SRW with diesel engine)
⓪ ⓪ ⓪			Camper Package — Includes front springs upgrade (unless maximum springs have been computer-selected as included equipment); rear stabilizer bar (SRW); slide-in-camper certification; and auxiliary rear springs
— — ⓪			Chrome Package — Includes unique all-chrome billet-style grille, chrome exhaust tip, chrome tow hooks, chrome mirror caps, chrome pickup bed tie-down hooks, and 6-in. chrome angular step bars
— ⓪ —			Cabela's Package (F-250/F-350 Crew Cab SRW 4x4) — Includes 18-in. bright machined cast-aluminum wheels with Cabela's centre cap; LT275/70R18 all-terrain OWL tires; Advanced Security Group; Trailer Brake Controller; Reverse Vehicle Aid Sensor; front leather-trimmed seats with stitched Cabela's logo; centre console with lockable storage; heated seats; power driver and front-passenger seats; leather-trimmed 60/40 split rear seat with underseat lockable storage; AM/FM stereo/6-disc in-dash CD changer with MP3 capability, digital clock and 4 speakers; SIRIUS Satellite Radio; SYNC; Black all-weather floor mats with Cabela's logo; power-adjustable pedals; Dark Shadow Grey front and rear bumpers; 6-in. painted angular step bars; fog lamps; PowerScope mirrors; power-sliding rear window; Sterling Grey lower-accent two-tone paint; Dark Shadow Grey wheel-lip mouldings; transfer case and fuel tank skid plates; custom-moulded mud flaps; Cabela's box decals and tailgate badge; Cabela's logo bed mat; leather-wrapped steering wheel with SYNC controls; Dual-zone Electronic Automatic Temperature Control; Rancho®-branded shocks; Driver Memory Seating System (driver seat, mirrors, pedals)
— — ⓪			Ford Harley-Davidson™ Package — Includes dimensional chrome boxside lettering (requires optional painted flames), body-colour billet-style grille and surround; body-colour front and rear bumpers and mirror caps; blacked-out headlamps; "Harley-Davidson F-Series Super Duty™" badges, Black moulded illuminated running boards with stainless steel inserts; chrome exhaust tip; rubber bed mat with HARLEY-DAVIDSON Bar & Shield logo; chrome tow hooks and chrome pickup bed tie-downs; 19.5-in. polished forged-aluminum wheels with Bar & Shield logo on centre caps (F-450); 20-in. polished forged-aluminum wheels with chrome lug nuts and Bar & Shield logo on centre caps (F-250/F-350); front seats with Black leather-trimmed seating surfaces and chrome Bar & Shield logo badges; front leather-trimmed centre console; memory power-adjustable performance pedals; Black carpeted floor mats with "Harley-Davidson" script and laser-engraved serialization plate attached to leather front console lid (F-250/F-350 LARIAT Crew Cab SRW; F-450 LARIAT; requires 6.4L diesel engine and ESOF 4x4)
⓪ ⓪ ⓪			Heavy-Service Suspension Package — Includes front springs upgrade (unless maximum springs have been computer-selected as included equipment)
— — ⓪			KING RANCH® Package — Includes Pueblo Gold lower-accent two-tone paint and wheel-lip mouldings; body-colour exterior door handles; KING RANCH® fender badges; body-colour mirror caps; unique 18-in. forged painted-aluminum wheels (SRW); 17-in. forged-aluminum wheels (F-350 DRW); 19.5-in. forged polished-aluminum wheels (F-450); wheel-centre caps with KING RANCH® brand; front and rear floor mats with KING RANCH® brand; front console with Chaparral leather-wrapped lid; full-grain leather-wrapped steering wheel; Chaparral leather-trimmed front seats; and more
⓪ ⓪ ⓪			FX4 Off-Road Package — Includes coloured front and rear Rancho-branded shocks; transfer case and fuel tank skid plates; and unique 4x4 Off-Road box decals
⓪ ● ●			Power Equipment Group — Includes power door locks, remote keyless entry with 2 fobs, power front windows (plus rear on Crew Cab) with one-touch-down driver-window feature, and accessory delay (XL Fleet only)
— ⓪ ⓪			Rear-Seat DVD Entertainment System — Includes roof-mounted DVD system with 8-in. video screen, 2 sets of wireless headphones and a remote control (n/a with power moonroof; Crew Cab only) (XLT requires Cabela's Package)
⓪ ⓪ ⓪			Skid Plates — Includes transfer case and fuel tank skid plates (requires 4x4)

Features & Options Continued

			XL
			XLT
			LARIAT
Packages Continued			
○	○	○	Snow Plow Prep Package — Computer-selected springs for snow plow application, and 200-amp. alternator (4x4 only)
○	○	○	TowBoss Package — Includes 4.10 limited-slip rear axle and increased GCWR to 11,793 kg (26,000 lbs.) (F-350 DRW only; requires 6.4L diesel engine)
○	—	—	XL Décor Group — Includes chrome bumpers, dual-beam jewel-effect headlamps, bright chrome hub covers and centre ornaments (SRW only), and underhood engine-compartment lamp
—	●	—	XTR Package — Includes chrome billet-style grille, chrome exhaust tip, chrome tow hooks and pickup bed tie-down hooks, Advanced Security Group, PowerScope™ power-telescoping/-folding trailer tow sideview mirrors with power/heated glass and chrome mirror caps, 6-in chrome angular cab steps, fog lamps, 18-in. bright machined cast-aluminum wheels (F-250/F-350 SRW SuperCab and Crew Cab)
—	●	—	XTR Plus Package — Includes all of the content of the XTR Package, plus: leather-trimmed 40/20/40 front seats with power and heat, manual-sliding rear window, SYNC, Reverse Sensing System and power-adjustable pedals

● Standard ● Select Availability ○ Optional — Not Available

"SIRIUS," the SIRIUS dog logo, channel names and logos are trademarks of SIRIUS XM Radio Inc. Subscriptions governed by SIRIUS Terms and Conditions at siriuscanada.ca.

Engines

	5.4L 3-Valve V8	6.8L 3-Valve V10	6.4L Power Stroke V8 Turbo Diesel
Type	SOHC	SOHC	OHV (32-Valve)
Fuel injection	Sequential Electronic	Sequential Electronic	High-Pressure Common-Rail
Engine control system	Electronic	Electronic	Electronic
Induction system	Specially tuned	Specially tuned	Series Sequential Turbochargers, charged air cooler
Battery	12-volt; 650-CCA/72-amp	12-volt; 650-CCA/72-amp	Dual 12-volt; 750-CCA/78-amp
Alternator	157-amp	157-amp	135-amp (Single 200-amp or dual combined 320-amp opt.)
Cooling system	Pressurized series flow	Pressurized series flow	Pressurized series flow
Cylinders	8	10	8
Cylinder-head material	Aluminum	Aluminum	Cast iron
Block material	Cast iron	Cast iron	Cast iron
Valve operation	Hydraulic roller	Hydraulic roller	Push rod/rocker arms
Camshaft drive	Variable cam timing	Silent chain	Gear
Bore	90 mm (3.55 in.)	90 mm (3.55 in.)	98 mm (3.86 in.)
Stroke	106 mm (4.16 in.)	106 mm (4.16 in.)	105 mm (4.13 in.)
Compression ratio	9.8:1	9.2:1	16.7:1
Horsepower (hp @ rpm)	300 @ 5000	362 @ 4750	350 @ 3000 ¹
Torque (lb.-ft. @ rpm)	365 @ 3750	457 @ 3250	650 @ 2000 ¹
Recommended fuel	Unleaded	Unleaded	Ultra-Low-Sulfur Diesel

¹Governed at 325 hp @ 3000 rpm and 600 lb.-ft. torque @ 2000 rpm on F-450.

Maximum Payload Weight Ratings kg (lbs.)

Model/Wheelbase							
Series	GVWR	Regular Cab		SuperCab		Crew Cab	
		137.0-in.	141.8-in.	158.0-in.	156.2-in.	172.4-in.	
F-250 SRW 4x2	3992 (8800)	1411 (3110) ²	—	—	—	—	
	4082 (9000)	1442 (3180) ³	1402 (3090) ²	—	—	—	
	4173 (9200)	—	1433 (3160) ³	1420 (3130) ²	1397 (3080) ²	—	
	4264 (9400)	1266 (2790) ⁴	—	1451 (3200) ³	1429 (3150) ³	1433 (3160) ²	
	4354 (9600)	—	1225 (2700) ⁴	—	—	1461 (3220) ³	
	4445 (9800)	—	—	1261 (2780) ⁴	1238 (2730) ⁴	—	
	4491 (9900) ⁵	—	—	—	—	1225 (2700) ⁴	
F-250 SRW 4x4	4082 (9000)	1311 (2890) ²	—	—	—	—	
	4173 (9200)	1338 (2950) ³	1302 (2870) ²	—	—	—	
	4264 (9400)	—	1329 (2930) ³	1320 (2910) ²	1293 (2850) ²	—	
	4354 (9600)	1157 (2550) ⁴	—	1352 (2980) ³	1324 (2920) ³	1329 (2930) ²	
	4445 (9800)	—	1116 (2460) ⁴	—	—	1361 (3000) ³	
	4491 (9900) ⁵	—	—	1107 (2440) ⁴	1080 (2380) ⁴	1025 (2260) ⁴	
	4536 (10,000)	—	—	1152 (2540) ⁴	1125 (2480) ⁴	1070 (2360) ⁴	
F-350 SRW 4x2	4491 (9900) ⁵	1833 (4040) ²	1733 (3820) ²	1710 (3770) ²	1683 (3710) ²	1628 (3590) ²	
	4536 (10,000)	1878 (4140) ²	1778 (3920) ²	1705 (3760) ²	1683 (3710) ²	1628 (3590) ²	
	4536 (10,000)	1819 (4010) ³	1719 (3790) ³	1647 (3630) ³	1624 (3580) ³	1565 (3450) ³	
	4536 (10,000)	1461 (3220) ⁴	1343 (2960) ⁴	1288 (2840) ⁴	1266 (2790) ⁴	1207 (2660) ⁴	
	4581 (10,100)	1923/1864 (4240/4110) ^{2,3}	1823 (4020) ²	—	—	—	
	4627 (10,200)	—	1810 (3990) ³	—	—	—	
	4717 (10,400)	—	—	1887 (4160) ²	1864 (4110) ²	—	
	4808 (10,600)	1733 (3820) ⁴	—	1919 (4230) ³	1896 (4180) ³	1901 (4190) ²	
	4899 (10,800)	—	1705 (3760) ⁴	—	—	1928 (4250) ³	
	4989 (11,000)	—	—	1742 (3840) ⁴	1719 (3790) ⁴	—	
	5080 (11,200)	—	—	—	—	1751 (3860) ⁴	
	F-350 SRW 4x4	4491 (9900)	1687 (3720) ²	1588 (3500) ²	1515 (3340) ²	1488 (3280) ²	1438 (3170) ²
		4536 (10,000)	1687 (3720) ²	1583 (3490) ²	1515 (3340) ²	1488 (3280) ²	1433 (3160) ²
		4536 (10,000)	1624 (3580) ³	1524 (3360) ³	1451 (3200) ³	1429 (3150) ³	1374 (3030) ³
4536 (10,000)		1261 (2780) ⁴	1143 (2520) ⁴	1089 (2400) ⁴	1061 (2340) ⁴	1007 (2220) ⁴	
4717 (10,400)		1869 (4120) ²	—	—	—	—	
4808 (10,600)		1896 (4180) ³	1855 (4090) ²	—	—	—	
4899 (10,800)		—	1887 (4160) ³	1878 (4140) ²	1851 (4080) ²	—	
4989 (11,000)		1715 (3780) ⁴	—	1905 (4200) ³	1882 (4150) ³	1887 (4160) ²	
5080 (11,200)		—	1687 (3720) ⁴	—	—	1919 (4230) ³	
5171 (11,400)		—	—	1724 (3800) ⁴	1696 (3740) ⁴	—	
F-350 DRW 4x2	5352 (11,800)	2549 (5620) ²	—	—	—	—	
	5443 (12,000)	2581 (5690) ³	—	—	—	—	
	5534 (12,200)	—	—	2558 (5640) ²	—	—	
	5625 (12,400)	2404 (5300) ⁴	—	2590 (5710) ³	—	2572 (5670) ²	
	5715 (12,600)	—	—	—	—	2599 (5730) ³	
	5806 (12,800)	—	—	2413 (5320) ⁴	—	—	
	5897 (13,000)	—	—	—	—	2427 (5350) ⁴	
F-350 DRW 4x4	5443 (12,000)	2445 (5390) ²	—	—	—	—	
	5534 (12,200)	2477 (5460) ³	—	—	—	—	
	5625 (12,400)	—	—	2458 (5420) ²	—	2377 (5240) ²	
	5715 (12,600)	2295 (5060) ⁴	—	2486 (5480) ³	—	2409 (5310) ³	
F-450 DRW 4x2	5897 (13,000)	—	—	2304 (5080) ⁴	—	2227 (4910) ⁴	
	6577 (14,500)	—	—	—	—	2803 (6180) ⁴	
F-450 DRW 4x4	6577 (14,500)	—	—	—	—	2644 (5830) ⁴	

²5.4L 3V gas engine.

³6.8L 3V gas engine.

⁴6.4L diesel engine.

⁵4491 kg (9900 lbs.) optional GVWR. See your dealer for more details.

SPECIFICATIONS

Conventional Towing – Maximum Loaded Trailer Weights kg (lbs.)

Automatic Transmission			Regular Cab				SuperCab				Crew Cab					
Engine	Axle Ratio	GCWR	F-250/F-350 4x2 SRW	F-350 4x2 DRW	F-250/F-350 4x4 SRW	F-350 4x4 DRW	F-250/F-350 4x2 SRW	F-350 4x2 DRW	F-250/F-350 4x4 SRW	F-350 4x4 DRW	F-250/F-350 4x2 SRW	F-350 4x2 DRW	F-450 4x2 DRW	F-250/F-350 4x4 SRW	F-350 4x4 DRW	F-450 4x4 DRW
5.4L 3-valve SOHC V8	3.73	7257 (16,000)	4627 (10,200)	—	4445 (9800)	—	4536 (10,000)	—	4309 (9500)	—	4400 (9700)	—	—	4218 (9300)	—	—
	4.10	8165 (18,000)	5534 (12,200)	—	5352 (11,800)	—	5443 (12,000)	—	5216 (11,500)	—	5307 (11,700)	—	—	5126 (11,300)	—	—
		8391 (18,500)	—	5534 (12,200)	—	5352 (11,800)	—	5352 (11,800)	—	5171 (11,400)	—	—	—	—	—	—
6.8L 3-valve SOHC V10	4.10	9525 (21,000)	5670 (12,500)	—	5670 (12,500)	—	5670 (12,500)	—	5670 (12,500)	—	5670 (12,500)	—	—	5670 (12,500)	—	—
		10,433 (23,000)	—	6804 (15,000)	—	6804 (15,000)	—	6804 (15,000)	—	6804 (15,000)	—	6804 (15,000)	—	—	6804 (15,000)	—
	4.30	10,206/10,433 (22,500/23,000) ²	5670 (12,500)	—	5670 (12,500)	—	5670 (12,500)	—	5670 (12,500)	—	5670 (12,500)	—	—	5670 (12,500)	—	—
6.4L Power Stroke® V8 Turbo Diesel	3.31	10,433 (23,000)	5670 (12,500)	—	5670 (12,500)	—	5670 (12,500)	—	5670 (12,500)	—	5670 (12,500)	—	—	5670 (12,500)	—	—
	3.55	10,433 (23,000)	5670 (12,500)	—	5670 (12,500)	—	5670 (12,500)	—	5670 (12,500)	—	5670 (12,500)	—	—	5670 (12,500)	—	—
	3.73	10,659 (23,500)	—	6804 (15,000)	—	6804 (15,000)	—	6804 (15,000)	—	6804 (15,000)	—	6804 (15,000)	—	—	6804 (15,000)	—
	4.10LS ¹	11,793 (26,000)	—	6804 (15,000)	—	6804 (15,000)	—	6804 (15,000)	—	6804 (15,000)	—	6804 (15,000)	—	—	6804 (15,000)	—
	4.30	14,969 (33,000)	—	—	—	—	—	—	—	—	—	—	7257 (16,000)	—	—	7257 (16,000)

5th-Wheel Towing – Maximum Loaded Trailer Weights kg (lbs.)

Automatic Transmission			Regular Cab				SuperCab				Crew Cab					
Engine	Axle Ratio	GCWR	F-250/F-350 4x2 SRW	F-350 4x2 DRW	F-250/F-350 4x4 SRW	F-350 4x4 DRW	F-250/F-350 4x2 SRW	F-350 4x2 DRW	F-250/F-350 4x4 SRW	F-350 4x4 DRW	F-250/F-350 4x2 SRW	F-350 4x2 DRW	F-450 4x2 DRW	F-250/F-350 4x4 SRW	F-350 4x4 DRW	F-450 4x4 DRW
5.4L 3-valve SOHC V8	3.73	7257 (16,000)	4623 (10,200)	—	4445 (9800)	—	4536 (10,000)	—	4309 (9500)	—	4400 (9700)	—	—	4218 (9300)	—	—
	4.10	8165 (18,000)	5534 (12,200)	—	5352 (11,800)	—	5443 (12,000)	—	5216 (11,500)	—	5307 (11,700)	—	—	5126 (11,300)	—	—
		8391 (18,500)	—	5534 (12,200)	—	5352 (11,800)	—	5352 (11,800)	—	5171 (11,400)	—	—	—	—	—	—
6.8L 3-valve SOHC V10	4.10	9525 (21,000)	6804 (15,000)	—	6622 (14,600)	—	6713 (14,800)	—	6532 (14,400)	—	6622 (14,600)	—	—	6396 (14,100)	—	—
		10,433 (23,000)	—	7530 (16,600)	—	7303 (16,100)	—	7348 (16,200)	—	7167 (15,800)	—	5262 (11,600)	—	—	5080 (11,200)	—
	4.30	10,206/10,433 (22,500/23,000) ²	7484/7666 (16,500/16,900) ²	—	7303/7484 (16,100/16,500) ²	—	7394/7575 (16,300/16,700) ²	—	7212/7348 (15,900/16,200) ²	—	7303/7439 (16,100/16,400) ²	—	—	7076/7257 (15,600/16,000) ²	—	—
6.4L Power Stroke V8 Turbo Diesel	3.31	10,433 (23,000)	7394 (16,300)	—	7167 (15,800)	—	7257 (16,000)	—	7031 (15,500)	—	7167 (15,800)	—	—	6940 (15,300)	—	—
	3.55	10,433 (23,000)	7394 (16,300)	—	7167 (15,800)	—	7257 (16,000)	—	7031 (15,500)	—	7167 (15,800)	—	—	6940 (15,300)	—	—
	3.73	10,659 (23,500)	—	7394 (16,300)	—	7167 (15,800)	—	7212 (15,900)	—	7031 (15,500)	—	7121 (15,700)	—	—	6895 (15,200)	—
	4.10LS ¹	11,793 (26,000)	—	8528 (18,800)	—	8301 (18,300)	—	8346 (18,400)	—	8165 (18,000)	—	8255 (18,200)	—	—	8029 (17,700)	—
	4.30	14,969 (33,000)	—	—	—	—	—	—	—	—	—	—	11,158 (24,600)	—	—	10,977 (24,200)

¹Available with TowBoss Package only. ²Available with F-350 SRW model only.

Front Suspension

Type	Twin-I-Beam (F-250/F-350 4x2); solid Twin-Coil Monobeam axle (F-250/F-350 4x4, F-450 4x2 and 4x4)
Axle (rating @ ground)	2381 kg (5250 lbs.) (F-250/F-350 4x2); 2722 kg (6000 lbs.) (F-250/F-350 4x4); 3175 kg (7000 lbs.) (F-450)
Springs	Coil
Shock absorbers	35-mm (1½-in.) gas-type
Stabilizer bar	Standard

Rear Suspension

Type	Solid axle
Axle (rating @ ground)	2767 kg (6100 lbs.) (F-250); 3198 kg (7050 lbs.) (F-350 SRW); 4082 kg (9000 lbs.) (F-350 DRW); 4990 kg (11,000 lbs.) (F-450)
Springs	Leaf
Shock absorbers	35-mm (1½-in.) gas-type
Stabilizer bar	Standard on DRW pickup; optional in package on SRW pickup

Steering

Assist	Power
Overall ratio	20.35:1 (F-250/F-350 4x2); 19.77:1 (F-250/F-350 4x4); 20.38:1 (average; F-450)

Brakes

Type	4-wheel disc Anti-lock Brake System (ABS) (standard)
Front (rotor diameter)	347 mm (13.66 in.) (F-250/F-350); 369 mm (14.53 in.) (F-450)
Rear (rotor diameter)	340 mm (13.39 in.) (F-250/F-350); 390 mm (15.35 in.) (F-450)

Wheels

Type	Steel (standard) or aluminum (optional)
Size	17-in. (standard); 18-in. or 20-in. (optional F-250/F-350 SRW); 19.5-in. (F-450)
Number of studs	8 (F-250/F-350); 10 (F-450)
Bolt-circle diameter	170 mm (6.7 in.) SRW; 200 mm (7.87 in.) F-350 DRW; 225 mm (8.85 in.) F-450

Conventional Towing Notes: This information also applies to models with pickup box delete option (66D). Trailer tongue load weight should be 10-15% of total loaded trailer weight. Make sure that the vehicle payload (reduced by option weight) will accommodate trailer tongue load weight and the weight of passengers and cargo added to the towing vehicle. The addition of trailer tongue load weight, and the weight of passengers and cargo, cannot cause vehicle weights to exceed the rear GAWR (Gross Axle Weight Rating) or GVWR (Gross Vehicle Weight Rating). These ratings can be found on the vehicle Safety Compliance Certification Label. For F-250/F-350 SRW models, F-250 trailer weights are shown; F-350 trailer weights are within 91 kg (200 lbs.). Check with your sales consultant.

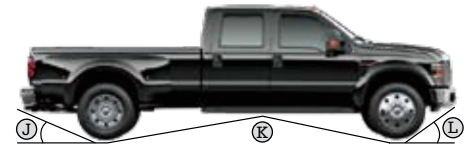
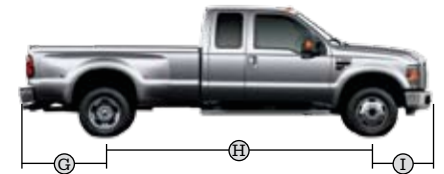
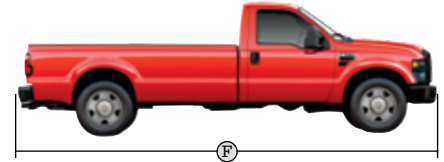
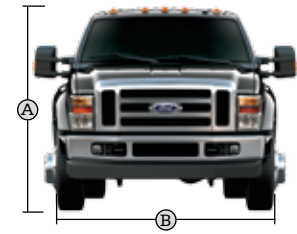
5th-Wheel Towing Notes: This information also applies to models with pickup box delete option (66D). Trailer kingpin weight should be 15-25% of total loaded trailer weight. Make sure that the vehicle payload (reduced by option weight) will accommodate trailer kingpin weight and the weight of passengers and cargo added to the towing vehicle. The addition of trailer kingpin weight, and the weight of passengers and cargo, cannot cause vehicle weights to exceed the rear GAWR (Gross Axle Weight Rating) or GVWR (Gross Vehicle Weight Rating). These ratings can be found on the vehicle Safety Compliance Certification Label. For F-250/F-350 SRW models, F-250 trailer weights are shown; F-350 trailer weights are within 91 kg (200 lbs.). Check with your sales consultant.

Maximum capabilities shown are for properly equipped vehicles with required equipment and a 68-kg (150-lb.) driver. Weight of additional options, equipment, passengers and cargo must be deducted from this weight. For additional information, see your Ford of Canada Dealer.

Dimensions

Exterior mm (in.)	Regular Cab	SuperCab		Crew Cab	
	4x2/4x4	SWB 4x2/4x4	LWB 4x2/4x4	SWB 4x2/4x4	LWB 4x2/4x4
A. Height — F-250 SRW (w/o options)	1928/2012 (75.9/79.2)	1941/2017 (76.4/79.4)	1935/2017 (76.2/79.4)	1961/2029 (77.2/79.9)	1948/2029 (76.7/79.9)
A. Height — F-350 SRW (w/o options)	1930/2037 (76.0/80.2)	1943/2047 (76.5/80.6)	1938/2042 (76.3/80.4)	1956/2060 (77.0/81.1)	1951/2055 (76.8/80.9)
A. Height — F-350 DRW (w/o options)	1933/2017 (76.1/79.4)	—	1943/2022 (76.5/79.6)	—	1956/2035 (77.0/80.1)
A. Height — F-450 DRW (w/o options)	—	—	—	—	2027 (79.8)
B. Overall width — SRW (excl. mirrors)	2029 (79.9)	2029 (79.9)	2029 (79.9)	2029 (79.9)	2029 (79.9)
B. Overall width — with standard mirrors	2530 (99.6)	2530 (99.6)	2530 (99.6)	2530 (99.6)	2530 (99.6)
C. Ground clearance — F-250 SRW	178/198 (7.0/7.8)	178/198 (7.0/7.8)	178/198 (7.0/7.8)	178/198 (7.0/7.8)	178/198 (7.0/7.8)
C. Ground clearance — F-350 SRW	178/198 (7.0/7.8)	178/198 (7.0/7.8)	178/198 (7.0/7.8)	178/198 (7.0/7.8)	178/198 (7.0/7.8)
C. Ground clearance — F-350 DRW	180/191 (7.1/7.5)	—	180/188 (7.1/7.4)	—	180/188 (7.1/7.4)
C. Ground clearance — F-450 DRW	—	—	—	—	198 (7.8)
D. Loadfloor height — F-250 SRW	861/874 (33.9/34.4)	861/876 (33.9/34.5)	861/876 (33.9/34.5)	859/945 (33.8/34.5)	857/876 (33.7/34.5)
D. Loadfloor height — F-350 SRW	864/945 (34.0/37.2)	866/947 (34.1/37.3)	864/945 (34.0/37.2)	864/947 (34.0/37.2)	861/945 (33.9/37.2)
D. Loadfloor height — F-350 DRW	874/889 (34.4/35.0)	—	874/892 (34.4/35.1)	—	871/892 (34.3/35.1)
D. Loadfloor height — F-450 DRW	—	—	—	—	892 (35.1)
E. Cargo box height	508 (20.0)	511 (20.1)	508 (20.0)	511 (20.1)	508 (20.0)
F. Overall length	5766 (227.0)	5888 (231.8)	6299 (248.0)	6253 (246.2)	6665 (262.4)
G. Overhang — rear	1331 (52.4)	1331 (52.4)	1331 (52.4)	1331 (52.4)	1331 (52.4)
H. Wheelbase	3480 (137.0)	3602 (141.8)	4013 (158.0)	3967 (156.2)	4379 (172.4)
I. Overhang — front	955 (37.6)	955 (37.6)	955 (37.6)	955 (37.6)	955 (37.6)
J. Angle of departure — F-250 SRW	16.4°/17.3°	16.4°/17.3°	16.2°/17.3°	16.3°/17.4°	16.2°/17.4°
J. Angle of departure — F-350 SRW	16.6°/20.3°	16.5°/20.2°	16.3°/20.2°	16.4°/20.2°	16.3°/20.2°
J. Angle of departure — F-350 DRW	17.0°/17.9°	—	16.8°/17.9°	—	16.7°/17.9°
J. Angle of departure — F-450 DRW	—	—	—	—	17.9°
K. Ramp breakover angle — F-250 SRW	13.7°/18.1°	13.1°/17.7°	11.6°/15.9°	11.8°/15.9°	10.9°/14.4°
K. Ramp breakover angle — F-350 SRW	14.3°/20.2°	13.6°/19.3°	12.0°/17.0°	12.1°/17.2°	11.0°/15.6°
K. Ramp breakover angle — F-350 DRW	13.8°/18.8°	—	13.2°/15.5°	—	11.0°/14.4°
K. Ramp breakover angle — F-450 DRW	—	—	—	—	15.2°
L. Angle of approach — F-250 SRW	21.0°/23.5°	21.1°/23.5°	21.2°/23.5°	22.4°/23.5°	21.2°/23.6°
L. Angle of approach — F-350 SRW	21.1°/22.8°	21.1°/22.8°	21.3°/22.9°	21.2°/22.9°	21.3°/22.9°
L. Angle of approach — F-350 DRW	20.9°/23.3°	—	21.0°/23.3°	—	21.1°/23.3°
L. Angle of approach — F-450 DRW	—	—	—	—	22.2°
Interior mm (in.)					
Front					
Head room	1052 (41.4)	1052 (41.4)	1052 (41.4)	1052 (41.4)	1052 (41.4)
Shoulder room	1727 (68.0)	1727 (68.0)	1727 (68.0)	1727 (68.0)	1727 (68.0)
Hip room	1717 (67.6)	1717 (67.6)	1717 (67.6)	1717 (67.6)	1717 (67.6)
Leg room	1041 (41.0)	1041 (41.0)	1041 (41.0)	1041 (41.0)	1041 (41.0)
Rear					
Head room	—	975 (38.4)	975 (38.4)	1052 (41.4)	1052 (41.4)
Shoulder room	—	1730 (68.1)	1730 (68.1)	1727 (68.0)	1727 (68.0)
Hip room	—	1709 (67.3)	1709 (67.3)	1709 (67.3)	1709 (67.3)
Leg room	—	808 (31.8)	808 (31.8)	1062 (41.8)	1062 (41.8)
Cargo Box					
Volume L (cu. ft.)	2192 (77.4)	1824 (64.4)	2192 (77.4)	1824 (64.4)	2192 (77.4)
M. Width at floor (max.) mm (in.)	1760 (69.3)	1760 (69.3)	1760 (69.3)	1760 (69.3)	1760 (69.3)
N. Length at floor mm (in.)	2489 (98.0)	2078 (81.8)	2489 (98.0)	2078 (81.8)	2489 (98.0)
O. Width at wheelhouse mm (in.)	1293 (50.9)	1293 (50.9)	1293 (50.9)	1293 (50.9)	1293 (50.9)

SRW = single rear wheel DRW = dual rear wheel SWB = short wheelbase (6.75-ft. cargo box) LWB = long wheelbase (8-ft. cargo box)



WHEELS



17-in. Argent-Painted Steel



17-in. 5-spoke Cast-Aluminum



17-in. Argent-Painted Steel



17-in. Forged
Polished-Aluminum



17-in. KING RANCH*
Forged-Aluminum



18-in. Argent-Painted Steel



18-in. Bright Machined
Cast-Aluminum



18-in. Premium
Forged-Aluminum



18-in. KING RANCH*
Forged Painted-Aluminum



18-in. Cabela's* Bright
Machined Cast-Aluminum



19.5-in. Forged
Polished-Aluminum



19.5-in. KING RANCH*
Forged Polished-Aluminum



19.5-in. HARLEY-DAVIDSON
Polished Forged-Aluminum
Included on F-450 Harley-Davidson™



20-in. Forged
Polished-Aluminum



20-in. KING RANCH* Premium
Painted Forged-Aluminum



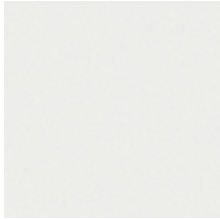
20-in. HARLEY-DAVIDSON
Polished Forged-Aluminum
Included on F-250/F-350 SRV
Harley-Davidson™



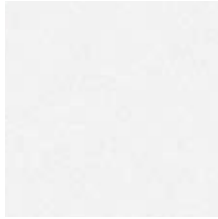
20-in. Cabela's
Forged-Polished Aluminum

COLOURS

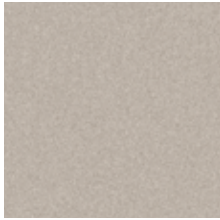
Exterior



Oxford White



White Platinum Metallic Tri-Coat¹



Pueblo Gold Metallic



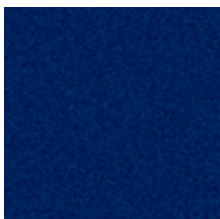
Vermillion Red



Royal Red Metallic



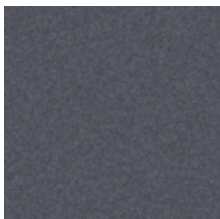
Forest Green Metallic



Dark Blue Pearl Metallic



Ingot Silver Metallic



Sterling Grey Metallic

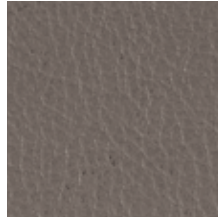


Black

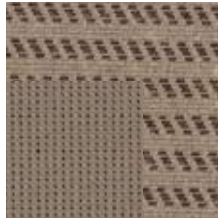
Interior



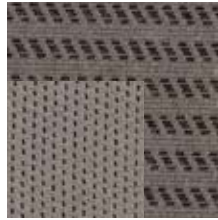
Camel Vinyl



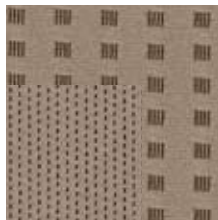
Medium Stone Vinyl



Camel Cloth



Medium Stone Cloth



Camel Premium Cloth



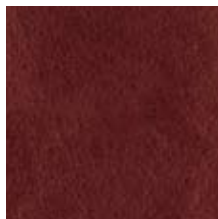
Medium Stone Premium Cloth



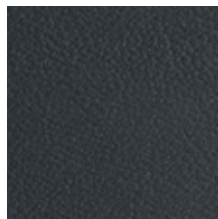
Camel Leather



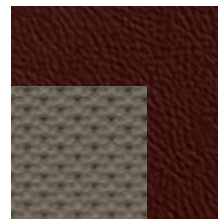
Medium Stone Leather



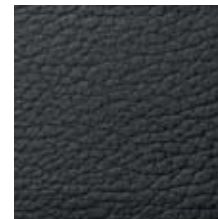
Chaparral Leather (KING RANCH®)



Ebony Leather



Cabela's Leather



Ebony Leather Standard on HARLEY-DAVIDSON Package

Colours shown are representative only. Not all colours are available on all models. See your Ford of Canada Dealer for actual paint/trim options.

Ebony	
Camel	
Medium Stone	
XL/XLT	
● ●	Oxford White
● ●	Pueblo Gold Metallic (XLT only)
● ●	Vermillion Red
● ●	Royal Red Metallic (XLT only)
● ●	Forest Green Metallic
● ●	Dark Blue Pearl Metallic
●	Ingot Silver Metallic
●	Sterling Grey Metallic
● ●	Black
LARIAT	
● ● ●	Oxford White
● ● ●	White Platinum Metallic Tri-Coat ¹
● ●	Pueblo Gold Metallic
● ●	Vermillion Red
● ● ●	Royal Red Metallic
● ● ●	Forest Green Metallic
● ● ●	Dark Blue Pearl Metallic
● ●	Ingot Silver Metallic
● ●	Sterling Grey Metallic
● ● ●	Black
LARIAT Two-Tone	
● ●	Oxford White/Pueblo Gold Metallic
● ●	Oxford White/Ingot Silver Metallic
● ●	White Platinum Metallic Tri-Coat ¹ /Pueblo Gold Metallic
● ●	Royal Red Metallic/Pueblo Gold Metallic
● ●	Royal Red Metallic/Ingot Silver Metallic
● ●	Forest Green Metallic/Pueblo Gold Metallic
● ●	Forest Green Metallic/Ingot Silver Metallic
● ●	Dark Blue Pearl Metallic/Pueblo Gold Metallic
● ●	Dark Blue Pearl Metallic/Ingot Silver Metallic
● ●	Black/Pueblo Gold Metallic
● ●	Black/Ingot Silver Metallic
HARLEY-DAVIDSON™	
●	Black
●	Black/Tuxedo Black flames
KING RANCH® Package²	
●	Oxford White/Pueblo Gold Metallic
●	White Platinum Metallic Tri-Coat ¹ /Pueblo Gold Metallic
●	Royal Red Metallic/Pueblo Gold Metallic
●	Forest Green Metallic/Pueblo Gold Metallic
●	Black/Pueblo Gold Metallic
CABELA'S® Package³	
●	Oxford White/Sterling Grey Metallic
●	Forest Green Metallic/Sterling Grey Metallic
●	Ingot Silver Metallic/Sterling Grey Metallic
●	Black/Sterling Grey Metallic

¹Extra-cost option.

²Camel interior with Chaparral leather-trimmed seats.

³Medium Stone interior with unique Cabela's leather-trimmed seats.

For more information on
Ford of Canada products and services,
please visit our website:



**Our commitment to you...
Peace-of-Mind Protection**

- Basic Coverage: 3 years/60,000 km
- Powertrain Limited Warranty:
5 years/100,000 km
- Direct-Injection Diesel Engine:
5 years/160,000 km (if equipped)
In addition, on all 2010 Model F-Series Super Duty vehicles
equipped with the diesel engine, the Powertrain warranty
is extended to 5 years/160,000 km (whichever occurs first),
which equals the diesel engine warranty
- Corrosion Warranty:
5 years/unlimited distance
- Roadside Assistance: 5 years/100,000 km

Certain conditions apply. For more information on these warranties
and coverages, ask your local Ford of Canada Dealer or visit ford.ca.

**For prompt, courteous answers
to your questions:**

Ford Customer Relationship Centre
1-800-565-3673

Ford Credit Customer Service Centre
1-877-636-7346



Ranger



F-150



F-Series Super Duty®

Please note: The electronic version of the
Ford of Canada vehicle brochure is a condensed
version of the original printed version.

Competitive comparisons are based on 2009 competitive models,
publicly available information and Ford data at the time of printing
of the 2010 original printed version. Some features discussed may be
optional. Vehicles shown may contain optional equipment. Features
shown may be offered only in combination with other options or
subject to additional ordering requirements or limitations. Dimensions
shown may vary due to optional features and/or production variability.
Following publication of the 2010 original printed brochure, certain
changes in standard equipment, options and the like, or product delays
may have occurred which would not be included in these pages. Your
Ford of Canada Dealer is your best source for up-to-date information.
Ford Motor Company of Canada, Limited, reserves the right to change
product specifications at any time without incurring obligations. Colours
may not be exactly as illustrated. Please see your sales consultant for
specific colour and model availability. Please visit your local dealer or
ford.ca for complete vehicle details.

FORD EXTENDED SERVICE PLAN

For a purchase or lease, the Ford Extended Service Plan (ESP) gives you
"Peace-of-Mind" protection designed to cover key vehicle components
and help protect you from the cost of unexpected repairs. To add to your
peace of mind and help protect your investment beyond your New Vehicle
Basic Warranty, complement your ESP with a prepaid maintenance plan
that covers all required scheduled maintenance items for your vehicle and
8 wear items. Ask your Dealer for a Ford ESP, the only service contract
backed exclusively by Ford Motor Company of Canada, Limited, and
honoured at all Ford and Ford Lincoln Dealerships across North America.
Certain limitations and exclusions apply, see your Dealer for details.

FORD CREDIT

Get the ride you want. Whether you plan to lease or finance, you'll find
the choices that are right for you at Ford Credit. Ask your local Ford of
Canada Dealer for details or check us out at fordcredit.ca.