

2010 | FUSION AND
FUSION HYBRID



Drive one.

The All-New
FUSION HYBRID

GETS
UP TO

61
MPG CITY¹



The New
2010 **FUSION**



Fusion SEL in Sangria Red Metallic (left) and Fusion Hybrid in Light Ice Blue Metallic (right).

THE NEW **FUSION** & ALL-NEW **HYBRID**.

The dynamic new face proclaims its enthusiasm for the road: Fusion is a driver's car. Redesigned from the outside in, Fusion now offers more engine choices, including an efficient 2.5L I-4, a 3.0L V6 Flex Fuel and a 263-hp 3.5L V6. Plus, the all-new Fusion Hybrid gets up to 4.6L/100 km city, 5.4 hwy. (61 mpg city/52 hwy.)¹ Loaded with the latest in smart technology, like our available Ford SYNC[®] with new 911 Assist[™] and available, class-exclusive² BLIS[®] (Blind Spot Information System) with Cross Traffic Alert, the 2010 Fusion is hotter than ever.



Drive one.



The all-new Fusion Hybrid uses its 2.5L I-4 Atkinson-cycle engine, electric traction motor, electronically controlled Continuously Variable Transmission and 275-volt battery pack to run up to 76 km/h (47 mph) in pure electric mode. Regenerative Braking automatically helps keep the battery pack charged, so Fusion Hybrid can deliver up to 4.6L/100 km city, 5.4 hwy. (61 mpg city/52 hwy.)¹



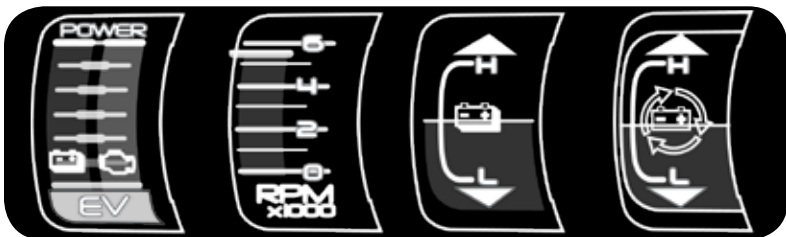
SMARTGAUGE™ WITH ECOGUIDE

Fusion Hybrid is the first in its class with 4.3-in. LCD screens flanking the luminous speedometer. There are 4 display modes: Inform, Enlighten, Engage or Empower. The vibrant Efficiency Forest grows (or loses) leaves according to your driving style.



IT ACTUALLY **GROWS LEAVES.**

Fusion Hybrid in Light Ice Blue Metallic.



DISPLAYS YOUR WAY

A built-in tutorial explains your options within each display mode. You can set your efficiency gauge style, choice of 3 languages, units of measurement and more.

LESS PUMP TIME. MORE FUN TIME.



The standard new 175-hp 2.5L I-4 engine is all about fun and efficiency. In fact, with front-wheel drive and the available 6-speed automatic transmission on SE, it gives Fusion max fuel-sipping ability of up to 6.4L/100 km hwy. (9.4 city).¹ Looking for road-grabbing, heart-pounding fun? Go with the new, 263-hp 3.5L V6 engine on Fusion Sport. It digs in with the help of 249 lb.-ft. of torque and All-Wheel Drive, while still delivering 8.3L/100 km hwy. (12.6 city).¹



RUNS ON E85 FUEL

The available 240-hp 3.0L V6 Flex Fuel engine keeps your refueling options open. It runs on E85, gasoline or any combination of the two.



SIZZLING 6-SPEEDS

The I-4 engine features a new 6-speed manual or an available 6-speed automatic. All V6 models get our new 6-speed SelectShift Automatic.™ which chooses the optimal gear for any situation and gives you the option to shift for yourself whenever you want. It's the best of both worlds.

Every Fusion starts with an independent double-wishbone suspension up front and a multilink twist-blade setup in back. A modified Sport-tuned suspension gives the new Fusion Sport a performance edge, while All-Wheel Drive helps keep you moving even if only one wheel has traction. That's serious fortitude.



MANOEUVRES SMARTER THAN EVER

Fusion is the only vehicle in its class with the available new BLIS® (Blind Spot Information System) with Cross Traffic Alert. When BLIS detects a vehicle in your blind spot, it flashes an amber light in your sideview mirror. Cross Traffic Alert sounds a warning when it detects a vehicle approaching either side of Fusion while you're moving in Reverse.



HELPS YOU BACK UP

The available new Rear View Camera displays an image on the available 8-in. Navigation screen, or in your rearview mirror (without Navigation). As you slowly back up, the available Reverse Sensing System sounds an alert to warn of certain objects behind the vehicle.



SIMPLY A **BLAST** TO DRIVE.

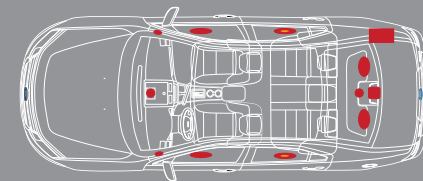
Fusion SEL in Sangria Red Metallic.

LOADED WITH HOT TECHNOLOGY.

SIRIUS
SATELLITE RADIO

SYNC
Powered by **Microsoft**

Standard SIRIUS® Satellite Radio³ streams sports, news, personalities and commercial-free music all across Canada. You can even listen online with your 6-month prepaid subscription. With new 911 Assist,TM the available Ford SYNC® system can directly contact a 911 operator if any airbag has deployed.⁴ Developed in association with Microsoft,[®] SYNC integrates your Bluetooth®-enabled mobile phone and nearly any portable media player.⁵ Visit SyncMyRide.ca for details.



SURROUNDS YOU WITH SONY®

390 watts of continuous power. 12 speakers. 2 amplifiers. The class-exclusive, available Sony Audio System uses Dolby® Automotive Entertainment Program (DAEP) 5.1 Surround Sound technology to create a home theatre-style experience in your Fusion.



LEADS THE WAY AND MORE

The available new Navigation System features voice activation, an 8-in. LCD touch screen, and nearly 10 gigabytes of storage for photos and music. It even plays DVDs when Fusion is in Park.

Fusion Sport in Charcoal Black.

MULTITALENTED, JUST LIKE YOU.



Fusion is built to comfortably accommodate you and up to 4 of your friends. It's also ready to impress with fun features like available Ambient Lighting that lets you choose from 7 hues and change them whenever you like. Convenient storage is all around, including several areas of the dash, covered storage in the centre floor console, and a pocket/beverage holder in each front door. There's plenty of room for you and all your essentials.



GOES TO GREAT LENGTHS

With the fold-flat front-passenger seat and quick-release 60/40 split-folding rear seat (SE and SEL), Fusion holds items up to 2.7 m (9 ft.) in length.

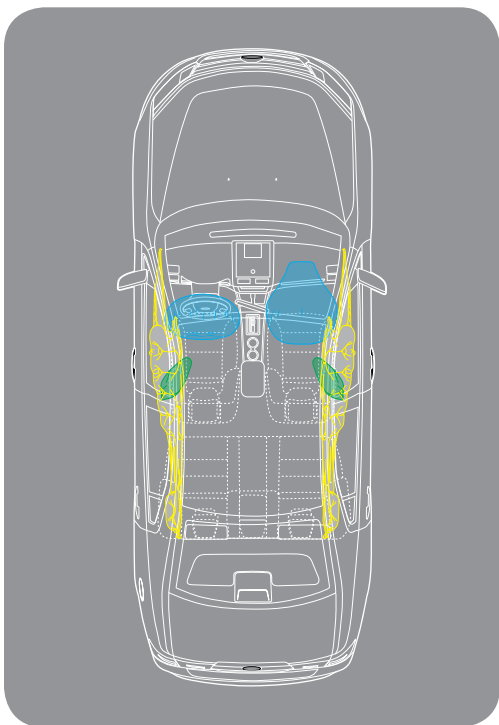


STOWS MORE THAN EVER

The voluminous Fusion trunk provides more room for your travelling gear this year, boasting 467 litres (16.5 cu. ft.) of capacity (334 litres [11.8 cu. ft.] in Hybrid).

Fusion SEL in Charcoal Black with available equipment.

Fusion has more standard safety features than ever for 2010. Brake-Actuated Traction Control joins our standard AdvanceTrac® ESC⁶ (electronic stability control) to help you stay on track. Of course, you'll also find 6 airbags standard on every Fusion, plus a unique new knee airbag for Fusion Hybrid drivers. The new SOS Post-Crash Alert System™⁷ flashes the hazard lights and sounds the horn to attract help after an airbag has deployed or a safety belt pretensioner has activated in certain collisions. Fusion's got you covered. All around.



6 AIRBAGS STANDARD

Every Fusion is equipped with the latest safety technology, including front-seat side airbags, 2-row side-curtain airbags, and our Personal Safety System™ with dual-stage front airbags.

DESIGNED FOR PEACE OF MIND.



Fusion Sport in Brilliant Silver Metallic.

SPECIFICATIONS

Standard Features

Mechanical

4-wheel Anti-lock Brake System (ABS)
 Front-wheel drive (FWD)
 Power rack-and-pinion steering
 Stabilizer bars — 24-mm front and 16-mm rear (17-mm rear on V6)
 Suspension — Front: independent Short- and Long-Arm
 Suspension — Rear: multilink independent

Safety & Security

Personal Safety System™ for driver and front passenger — Includes dual-stage front airbags,⁸ safety belt pretensioners, safety belt energy-management retractors, safety belt usage sensors, driver-seat position sensor, crash severity sensor, restraint control module and Front-Passenger Sensing System
 Front-seat side airbags⁹
 2-row side-curtain airbags⁹
 3-point safety belts for all seating positions
 AdvanceTrac® ESC (electronic stability control)
 Anti-theft perimeter alarm
 Battery saver
 Belt-Minder® front safety belt reminder
 Child-safety rear door locks
 Emergency trunk release
 Illuminated entry
 Remote keyless entry with integrated key transmitters (2)
 LATCH — Lower anchors and tether anchors for child-safety seats
 SecuriLock® passive anti-theft engine immobilizer system
 Side-intrusion door beams
 SOS Post-Crash Alert System™
 Tire Pressure Monitoring System (excludes spare)

Seating

5-passenger seating
 60/40 split-folding spring-assisted rear seat with quick-release levers in the trunk (non-Hybrid only)
 Fold-down front-passenger seat
 Front bucket seats

Interior

Accessory delay for power features
 Air conditioning
 Auxiliary audio input jack — Centre console
 Beverage holders — 6 (4 in Hybrid)
 Cabin air-filtration system
 Driver and front-passenger seatback map pockets
 Dual sun visors with illuminated mirrors
 Floor mats — Front and rear carpeted
 Full centre console with armrest and two-tiered storage
 Grocery bag hook — Trunk-mounted
 In-dash storage compartment
 Message centre with trip computer
 Overhead console with dome and map lights (not available with moonroof)
 Power door locks
 Power points — 2 (12-volt)
 Power trunk release
 Power windows with one-touch-up/-down driver-window feature
 Rear-seat fold-down centre armrest with beverage holders (non-Hybrid only)
 SIRIUS Satellite Radio — Includes 6-month prepaid subscription
 Tilt/telescoping steering column

Exterior

Body-colour, power sideview mirrors
 Easy Fuel™ capless fuel-filler system
 Fog lamps
 Grille — Bright-chrome 3-bar
 Headlamps — Quad-beam halogen
 Solar-tinted glass

Features & Options

	SE I-4	SEL I-4	SEL V6	Sport	Hybrid
Mechanical					
● ● — — —	2.5L 16-valve Duratec® I-4 engine				
— — ● — —	3.0L 24-valve Duratec V6 FFV engine				
— — — ● —	3.5L 24-valve Duratec V6 engine				
— — — — ●	2.5L I-4 Atkinson-cycle gasoline engine with Permanent-Magnet AC-synchronous electric motor				
— — — — ●	Electronically controlled Continuously Variable Transmission (eCVT)				
— — — — ●	275-volt sealed nickel-metal-hydrate (NiMH) battery				
— — — — ●	Regenerative Braking System				
● — — — —	6-speed manual transmission				
○ ● — — —	6-speed automatic transmission				
— — ● ● —	6-speed SelectShift Automatic™ transmission				
● — — — —	17-in. 5-spoke-design steel wheels with silver-painted covers				
— ● ● — —	17-in. 5-spoke machined-aluminum wheels				
— — — — ●	17-in. 15-spoke aluminum wheels				
— — — — ●	18-in. 5-spoke painted-aluminum wheels				
● ● ● — —	P225/50R17 V-rated all-season tires				
— — — ● —	P255/45R18 V-rated all-season tires				
— — ○ ● —	All-Wheel Drive (AWD) — Includes Traction Control				
○ ○ ○ ○ ○	Engine block heater				
Seating					
● ● ● — ●	2-way manual fold-flat front-passenger seat				
● — — — —	6-way power driver seat with manual lumbar				
— — — ● —	6-way power front-passenger seat				
— ● ● ● ●	8-way power driver seat				
— ○ ○ ● ○	Leather-trimmed seats				
— ○ ○ ● ○	Heated front seats (requires leather-trimmed seats)				
Interior					
● ● ● — —	AM/FM stereo/single-CD player with MP3 capability				
— — — — ●	Premium AM/FM 6-disc in-dash CD/MP3-capable audio system with 6 speakers				
○ ○ ○ ● ○	Sony® Audio System with DAEP 5.1 Surround Sound, AM/FM stereo/6-disc in-dash CD changer and 12 speakers				
● — — — —	Air conditioning — Manual				
— ● ● ● ●	Air conditioning — Dual-zone Electronic Automatic Temperature Control				
— ● ● ● ●	Ambient Lighting				
○ ● ● ● ●	Ford SYNC® voice-activated communications and entertainment system				

	SE I-4	SEL I-4	SEL V6	Sport	Hybrid
Interior (continued)					
— ○ ○ ○ ○	Hard drive-based, voice-activated Navigation System				
— ● ● ● ●	Leather-wrapped steering wheel				
— ● ● ● ●	Outside temperature display				
○ ○ ○ ● ○	Power moonroof (included in Moons & Tunes Value Package)				
○ ○ ○ ○ ○	Power remote start				
● — — — —	Rearview mirror — Manual day/night				
○ ● ● ● ●	Rearview mirror — Auto-dimming with compass				
Exterior					
— ● ● ● ●	Headlamps — Automatic				
— ● ● ● ●	SecuriCode™ keyless-entry keypad (driver door-mounted)				
○ ○ ○ ● —	Rear spoiler				
○ ○ ○ ● ●	Reverse Sensing System (not available with manual transmission)				
● — — — —	Body-colour, power, heated sideview mirrors				
— ● ● ● ●	Body-colour, power, heated sideview mirrors with security approach lamps				
● ● ● — ●	Speed-sensitive wipers				
Packages					
— ○ ○ — ○	Driver's Vision Package — Includes BLIS® (Blind Spot Information System) with Cross Traffic Alert and Rear View Camera (displayed in rearview mirror unless ordered with Navigation System; includes Reverse Sensing System on SEL)				
— — — ● —	Electronics Package — Includes BLIS (Blind Spot Information System) with Cross Traffic Alert, Rear View Camera (displayed in auto-dimming rearview mirror), 6-way power front-passenger seat, heated front seats, Dual-zone Electronic Automatic Temperature Control, Ambient Lighting, automatic headlamps, heated sideview mirrors with security approach lamps, power moonroof, and Sony Audio System with AM/FM stereo/6-disc in-dash CD changer and 12 speakers				
— ○ ○ — ○	Moons & Tunes Value Package — Includes power moonroof, and Sony Audio System with AM/FM stereo/6-disc in-dash CD changer and 12 speakers				

● Standard ○ Optional — Not Available

SPECIFICATIONS

Model-Specific Features

Fusion SE standard content:

2.5L DOHC Duratec I-4 engine • 6-speed manual transmission • 17-in. 5-spoke-design steel wheels with silver-painted covers • P225/50R17 V-rated all-season tires • Chrome-tipped exhaust • 6-way power driver seat with manual lumbar • Fold-flat front-passenger seat • 60/40 split-folding spring-assisted rear seat • Air conditioning • AM/FM stereo/single-CD player with MP3 capability • Manual day/night rearview mirror

Fusion SEL includes SE content, plus:

17-in. 5-spoke machined-aluminum wheels • 8-way power driver seat • Ambient Lighting • Auto-dimming rearview mirror with microphone and compass • Dual-zone Electronic Automatic Temperature Control • Ford SYNC voice-activated communications and entertainment system • Steering wheel-mounted cruise and secondary audio controls • Automatic headlamps • SecuriCode keyless-entry keypad • Body-colour, power, heated sideview mirrors with security approach lamps • Fog lamps with bright surround

Fusion Sport includes SEL content, plus:

3.5L V6 engine with 6-speed SelectShift Automatic transmission • All-Wheel Drive (AWD) • 18-in. 5-spoke painted-aluminum wheels • P255/45R18 V-rated all-season tires • Dual chrome-tipped exhaust • Sport-tuned suspension • 8-way power driver seat • 6-way power front-passenger seat • Heated front seats • Leather-trimmed seats with Red, Blue or Black trim inserts • Leather-wrapped steering wheel • Sony Audio System with DAEP 5.1 Surround Sound, AM/FM stereo/6-disc in-dash CD changer and 12 speakers • Unique appliqué on centre stack • Chrome-accented exterior trim • Rear spoiler • Side rocker mouldings • BLIS (Blind Spot Information System) with Cross Traffic Alert • Fog lamps with chrome surround • Power moonroof • Reverse Sensing System • Rear View Camera

Fusion Hybrid includes all standard I-4 SEL content, plus:

2.5L I-4 Atkinson-cycle engine • eCVT transmission • Hybrid battery - 275-volt sealed (NiMH) • Permanent-Magnet electric motor • Regenerative Braking System • 17-in. 15-spoke aluminum wheels • P225/50R17 V-rated all-season tires • 110-volt power point • SmartGauge™ dual LCD cluster with EcoGuide • Fixed rear seat • Eco-friendly cloth seating • Premium AM/FM/6-disc in-dash CD/MP3-capable audio system with 6 speakers

Engines

	2.5L Duratec I-4	3.0L Duratec V6	3.5L Duratec V6
Horsepower (hp @ rpm)	175 @ 6000	240 @ 6550	263 @ 6250
Torque (lb.-ft. @ rpm)	172 @ 4500	223 @ 4300	249 @ 4500
	Hybrid — 2.5L iVCT Atkinson-cycle I-4 engine with Permanent-Magnet AC-synchronous electric motor		
Net Horsepower	191		

Estimated Fuel Consumption Ratings¹

Transmission	2.5L Duratec I-4	3.0L Duratec V6	3.5L Duratec V6
6-speed manual (FWD)	9.4L/100 km city and 6.9 hwy. (30 mpg city/41 hwy.)	n/a	n/a
6-speed automatic (FWD)	9.4L/100 km city and 6.4 hwy. (30 mpg city/44 hwy.)	11.3L/100 km city and 7.4 hwy. (25 mpg city/38 hwy.)	n/a
6-speed automatic (AWD)	n/a	11.8L/100 km city and 7.8 hwy. (24 mpg city/36 hwy.)	12.6L/100 km city and 8.3 hwy. (22 mpg city/34 hwy.)
	Hybrid — 2.5L iVCT Atkinson-cycle I-4 engine with Permanent-Magnet AC-synchronous electric motor		
eCVT	4.6L/100 km city and 5.4 hwy. (61 mpg city/52 hwy.)		

Dimensions & Ratings

Exterior	Fusion mm (in.)	Hybrid mm (in.)
Wheelbase	2728 (107.4)	2728 (107.4)
Length	4841 (190.6)	4841 (190.6)
Height	1445 (56.9)	1445 (56.9)
Width — Excluding mirrors	1834 (72.2)	1834 (72.2)
Width — Including mirrors	2035 (80.1)	2035 (80.1)
Interior		
Front		
Head room	983 (38.7)	983 (38.7)
Shoulder room	1458 (57.4)	1458 (57.4)
Hip room	1372 (54.0)	1372 (54.0)
Leg room	1074 (42.3)	1074 (42.3)
Rear		
Head room	960 (37.8)	960 (37.8)
Shoulder room	1435 (56.5)	1435 (56.5)
Hip room	1354 (53.3)	1354 (53.3)
Leg room	942 (37.1)	932 (36.7)
Capacities		
Passenger volume litres (cu. ft.)	2840 (100.3)	2826 (99.8)
Luggage volume litres (cu. ft.)	467 (16.5)	334 (11.8)
Total interior volume litres (cu. ft.)	3307 (116.8)	3160 (111.6)
Seating capacity	5	5
Fuel capacity litres (FWD/AWD)	66/63	66/—

Footnotes & Disclaimers

¹Fuel consumption ratings based on Transport Canada approved test methods.

²Midsized Sedan class.

³See your Ford of Canada Dealer or contact SIRIUS at 1-888-539-7474 for more information. "SIRIUS," the SIRIUS dog logo, channel names and logos are trademarks of SIRIUS Satellite Radio Inc.

⁴The vehicle's electrical system (including the battery), the wireless service provider's signal, and a connected mobile phone must all be available and operating for 911 Assist to function properly. These systems may become damaged in a crash. The paired mobile phone must be turned on, connected to SYNC, and the 911 Assist feature enabled in order for 911 to be dialed.

⁵Driving while distracted can result in loss of vehicle control. Only use mobile phones and other devices, even with voice commands, when it is safe to do so. Microsoft is a registered trademark of Microsoft Corporation. The Bluetooth word mark is a trademark of the Bluetooth SIG, Inc.

⁶Remember that even advanced technology cannot overcome the laws of physics. It's always possible to lose control of a vehicle due to inappropriate driver input for the conditions.

⁷SOS hardware may become damaged or the battery may lose power in a crash, which could prevent operation. Not all crashes will activate an airbag or safety belt pretensioner.

⁸Always wear your safety belt and secure children in the rear seat.

Sony is a registered trademark of Sony Corporation.

Dolby is a registered trademark of Dolby Laboratories.

ACCESSORIES

- A. Interior Cargo Organizer
- B. Interior Cargo Net
- C. Garmin® nüvi® Portable Navigation System⁹
- D. Keyless Entry Keypad
- E. Graphic Stripe
- F. Bi-Directional Remote Start System
- G. 17-in. Polished-Aluminum Wheel
- H. Front Illuminated Sill Plates
- I. Soft-Sided Cooler

Also available:

- 5-Piece Body Kit by 3dCarbon⁹
- 6-Piece Body Kit by 3dCarbon⁹
- 17-in. Painted-Black Aluminum Wheels
- All-Weather Floor Mats
- Ashcup/Coin Holder/Smoker's Pack
- Dual INVISION™ DVD Headrests⁹
- Electrochromic Mirrors
- Ford SYNC[®]
- Interior Cargo Area Protector
- Interior Lighting Kit
- Moonroof Deflector
- Side Window Deflectors
- Splash Guards⁹
- Vehicle Security System
- Wheel Locks
- Wiper Shaker⁹

⁹Ford Licensed Accessories.

Garmin is a registered trademark of Garmin Ltd.



Ford of Canada warrants that its authorized Dealers will repair or replace any Genuine Ford Accessory that is properly installed by the authorized Dealer that sold the accessory and found to be defective in factory-supplied materials or workmanship. The accessory will be warranted for whichever provides you the greatest benefit: 12 months/20,000 km (whichever occurs first), or the remainder of your 36-month/60,000-km (whichever occurs first) Basic Coverage in the New Vehicle Limited Warranty. Contact your local Ford of Canada Dealer for details.

Ford Licensed Accessories (FLA) are warranted by the accessory manufacturer's limited warranty. The warranty coverage will vary by accessory manufacturer. Contact your local Ford of Canada Dealer for details regarding the accessory manufacturer's limited warranty and/or for a copy of the FLA product limited warranty offered by the accessory manufacturer.

Ford ESP PremiumCare Plan. Depending on the Ford ESP Plan you select, some Dealer-installed Genuine Ford Accessories can be covered up to 7 years or 150,000 km. See your Ford of Canada Dealer for details.



WHEELS



17-in. 5-Spoke Machined-Aluminum Standard on SEL



17-in. 5-Spoke-Design Steel with Silver-Painted Covers Standard on SE



17-in. 15-Spoke Aluminum Standard on Hybrid



18-in. 5-Spoke Painted-Aluminum Standard on Sport

COLOURS

Exterior



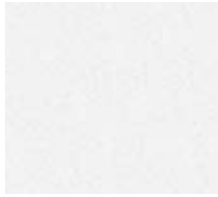
Smokestone Metallic



Sangria Red Metallic



Sport Blue Metallic



White Platinum Metallic
Tri-Coat



Tuxedo Black Metallic



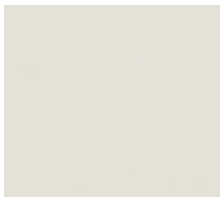
Brilliant Silver Metallic



Sterling Grey Metallic



Atlantis Green Metallic



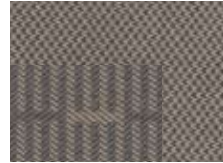
White Suede



Light Ice Blue Metallic

Interior

SE



Cloth - Medium Light Stone with
Medium Light Stone inserts
Standard on SE and SEL



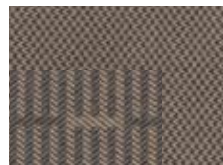
Brushed-Aluminum trim



Cloth - Charcoal Black with
Charcoal Black inserts
Standard on SE and SEL



Brushed-Aluminum trim



Cloth - Camel with
Camel inserts
Standard on SE and SEL

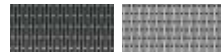


Brushed-Aluminum trim

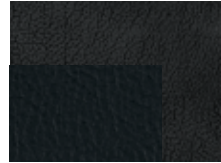
SEL



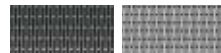
Leather - Medium Light Stone with
Medium Light Stone inserts
Available on SEL and Hybrid



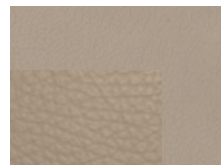
Black Carbon
Weave trim
SEL



Leather - Charcoal Black with
Charcoal Black inserts
Available on SEL and Hybrid



Black Carbon
Weave trim
SEL



Leather - Camel with
Camel inserts
Available on SEL



Woodgrain trim

SPORT



Leather - Charcoal Black with
Charcoal Black inserts
Standard on Sport



Polished Slate trim



Leather - Charcoal Black with
Sport Blue inserts
Standard on Sport



Blue Racer trim



Leather - Charcoal Black with
Sport Red inserts
Standard on Sport



Cherry Red trim

HYBRID



Cloth - Medium Light Stone with
Medium Light Stone inserts
Standard on Hybrid



Silver Carbon Weave trim



Cloth - Charcoal Black with
Charcoal Black inserts
Standard on Hybrid



Silver Carbon Weave trim

Medium Light Stone	
Camel	
Charcoal Black	
Charcoal Black/Sport Blue Inserts	
Charcoal Black/Sport Red Inserts	
● ●	SE
● ●	Smokestone Metallic
● ● ●	Sangria Red Metallic ¹⁰
● ● ●	Sport Blue Metallic
● ● ●	White Platinum Metallic Tri-Coat
● ● ●	Tuxedo Black Metallic
● ● ●	Brilliant Silver Metallic
● ● ●	Sterling Grey Metallic ¹⁰
● ● ●	Atlantis Green Metallic ¹⁰
● ● ●	White Suede
● ● ●	SEL
● ● ●	Smokestone Metallic
● ● ●	Sangria Red Metallic ¹⁰
● ● ●	Sport Blue Metallic
● ● ●	White Platinum Metallic Tri-Coat
● ● ●	Tuxedo Black Metallic
● ● ●	Brilliant Silver Metallic
● ● ●	Sterling Grey Metallic ¹⁰
● ● ●	Atlantis Green Metallic ¹⁰
● ● ●	White Suede
● ● ● ●	SPORT
● ● ● ●	Sangria Red Metallic ¹⁰
● ● ● ●	Sport Blue Metallic
● ● ● ●	Tuxedo Black Metallic
● ● ● ●	Brilliant Silver Metallic
● ● ● ●	HYBRID
● ● ● ●	Light Ice Blue Metallic
● ● ● ●	White Platinum Metallic Tri-Coat
● ● ● ●	Tuxedo Black Metallic
● ● ● ●	Brilliant Silver Metallic
● ● ● ●	Sterling Grey Metallic ¹⁰
● ● ● ●	Atlantis Green Metallic ¹⁰

Ford uses clearcoat paint for beauty and protection. Colours shown are representative only. Not all colours are available on all models. See your Ford of Canada Dealer for actual paint/trim options.

¹⁰New for 2010.

For more information on
Ford of Canada products and services,
please visit our website:



Our commitment to you... Peace-of-Mind Protection

- Basic Coverage:
3 years/60,000 km
- Powertrain Warranty:
5 years/100,000 km
- Corrosion Warranty:
5 years/unlimited distance
- Roadside Assistance:
5 years/100,000 km

Certain conditions apply. For more information on these warranties and coverages, ask your local Ford of Canada Dealer or visit ford.ca.

For prompt, courteous answers to your questions:

Ford Customer Relationship Centre
1-800-565-3673
Ford Credit Customer Service Centre
1-877-636-7346

Please note: The electronic version of the Ford of Canada vehicle brochure is a condensed version of the original printed version.

Competitive comparisons are based on 2009 competitive models, publicly available information and Ford data at the time of printing of the 2010 original printed version. Some features discussed may be optional. Vehicles shown may contain optional equipment. Features shown may be offered only in combination with other options or subject to additional ordering requirements or limitations. Dimensions shown may vary due to optional features and/or production variability. Following publication of the 2010 original printed brochure, certain changes in standard equipment, options and the like, or product delays may have occurred which would not be included in these pages. Your Ford of Canada Dealer is your best source for up-to-date information. Ford Motor Company of Canada, Limited, reserves the right to change product specifications at any time without incurring obligations. Colours may not be exactly as illustrated. Please see your sales consultant for specific colour and model availability. Please visit your local dealer or ford.ca for complete vehicle details.

FORD EXTENDED SERVICE PLAN

For a purchase or lease, the Ford Extended Service Plan (ESP) gives you "Peace-of-Mind" protection designed to cover key vehicle components and help protect you from the cost of unexpected repairs. To add to your peace of mind and help protect your investment beyond your New Vehicle Basic Warranty, complement your ESP with a prepaid maintenance plan that covers all required scheduled maintenance items for your vehicle and 8 wear items. Ask your Dealer for a Ford ESP, the only service contract backed exclusively by Ford Motor Company of Canada, Limited, and honoured at all Ford and Ford Lincoln Dealerships across North America. Certain limitations and exclusions apply, see your Dealer for details.

FORD CREDIT

Get the ride you want. Whether you plan to lease or finance, you'll find the choices that are right for you at Ford Credit. Ask your local Ford of Canada Dealer for details or check us out at fordcredit.ca.



Focus

Fusion

Mustang

Taurus