

2010 SANTA FE



 **HYUNDAI™**

WHAT SMART MEANS TO US.



At Hyundai, we are constantly striving to make smart decisions when it comes to our vehicles so you can make smart decisions when it comes to your purchase. A smart decision means weighing the pros and cons, evaluating the costs against the benefits, and making a choice for the right reasons for you. It means having no regrets.

Our investment in eco-friendly technologies, quality craftsmanship, extensive research and design, together with our state-of-the-art facilities and dedicated human resources, ensures our vehicles are built with integrity from the first to the final detail. And, together, they deliver on Hyundai's promise to Canadians – to create a lineup of smart vehicles.



STYLE, UTILITY AND AGILITY.

EVERYONE DOES SOMETHING WELL. THE TRUE STANDOUTS, THOUGH, EXCEL AT A NUMBER OF THINGS. THE NEWLY REFINED SANTA FE IS JUST SUCH A VEHICLE. WITH EQUAL PARTS SOPHISTICATED STYLING, RESOURCEFUL UTILITY AND ROAD-HOLDING AGILITY, THE SANTA FE HAS BECOME THE DEFINITIVE MIDSIZE UTILITY VEHICLE. INSTEAD OF MAKING TRADEOFFS – RIDE OVER CARGO OR LOOKS OVER SPACE – GET IT ALL. FOR A LIFE ON THE MOVE, WE'VE GOT YOU COVERED IN THE REDESIGNED 2010 SANTA FE.



EXTERIOR

A VISUAL IDEA, BROUGHT TO LIFE.

In a design this pleasing to the eye, there are no extraneous lines or incomplete thoughts. The Santa Fe melds stunning curves with modern accents to strike the perfect balance of contemporary styling and state-of-the-art functionality. An available sunroof and rear spoiler give your Santa Fe added sportiness, and standard roof-rack side rails provide further utility. Standard alloy wheels maximize the Santa Fe's clean good looks, giving it a commanding presence on the road. And with power-adjustable heated exterior mirrors and available fog lights, you can outfit your Santa Fe for even the most unpredictable weather.



1. Restyled All Around. The 2010 Santa Fe's distinctive face features a new body colour grille with chrome accents, and available redesigned fog lights sitting beneath combination wrap-around, jewelled projector-beam headlamps. At back, a new rear fascia contains freshly redesigned combination tail lamps.



2. Alloys for Everyone. The 3.5L Sport and Limited models make memorable first impressions with 18" 10-spoke alloy wheels, while the 2.4L GL and 3.5L GL come standard with 17" 5-split-spoke alloys.

 HYUNDAI™

2010 SANTA FE

INTERIOR

SLEEK, SOPHISTICATED AND SPACIOUS.

The Santa Fe's smart design results in generous head, leg and shoulder room. Increased rigidity means a more sedan-like ride and a quieter cabin – perfect for enjoying the 6-speaker, 120W, AM/FM/XM/CD/MP3 audio system, or the acoustic accuracy of the Limited's available 10-speaker, 605W Infinity® system with 6-CD changer. XM Satellite radio and an auxiliary input jack for MP3 players are standard on all models. The Santa Fe's space-efficient design delivers ample room for people and cargo, and with fold-down second-row seats, you have access to 2,214L of valuable cargo space. The available 8-way power-adjustable driver's seat with power lumbar support proves the Santa Fe's interior is the result of thoughtful design.



1. Keep Safe Driving Well in Hand.

To maximize convenience and safety, Bluetooth® Handsfree® mobile phone interface is now standard on all Santa Fe models. Combined with the available newly redesigned steering wheel-mounted cruise and audio controls, your hands can stay safely on the wheel for better control and reaction time.

2. Under the Sun or the Night Sky.

Things are looking up, thanks to a 2-way power glass sunroof, available on the Sport and Limited models. Improved air circulation, enhanced cabin illumination and a cool view of the sky are yours with the simple touch of a button.



2010 SANTA FE

PERFORMANCE

STRONG PERFORMANCE COUPLED WITH SENSIBLE EFFICIENCY.

The Santa Fe is the ready-for-anything CUV. And the big story for 2010 is fuel efficiency, with a wider range of engine and transmission options. First, there's the new 4-cylinder: a spirited yet economical 2.4L inline 4 getting 7.2 L/100km highway and 10.2 L/100km city, with automatic transmission. For V6 fans, the Santa Fe now offers the larger, powerful 3.5L V6 that, remarkably, generates more horsepower while offering increased fuel efficiency over last year's model. It delivers 7.6 L/100km highway and 10.1 L/100km city. The 2.4L also has two transmission options featuring 6 gears for fuel-saving performance – a 6-speed manual or 6-speed automatic with SHIFTRONIC™ – while the 3.5L comes standard with the 6-speed automatic transmission. Optional AWD provides assured control even in precarious weather conditions. Santa Fe's confident, agile, sedan-like handling has been refined for 2010 and features direct sub-frame on frame mounting for improved ride quality.

 HYUNDAI™

2010 SANTA FE



1. Pure, Proficient and Powerful.

When it comes to power, your options have never been better. New to the Santa Fe for 2010 is the efficient and powerful 2.4L Theta II I-4. Also available is the new 3.5L Lambda II V6. Both are aluminum-constructed and come with Dual Continuously Variable Valve Timing (CVT), making them fuel-efficient and clean-burning. They also deliver an impressive 175 and 276 horses respectively, for plenty of power when you need it.

2. Fuel-Saving Eco Indicator

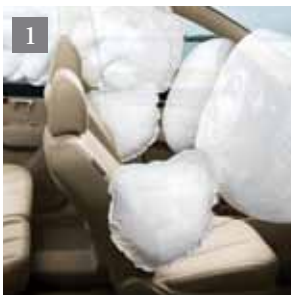
One of the easiest and most effective ways to improve fuel efficiency is to adjust your driving style. The Eco Indicator will show you when you're driving most efficiently, saving you gas and money while benefitting the environment.



SAFETY

HIT THE ROAD WITH PEACE OF MIND.

The Santa Fe offers a superior level of protection with a comprehensive package of high-tech safety features. Standard on all models are six airbags¹, Electronic Stability Control (ESC) and Traction Control System (TCS)², and front and rear disc brakes featuring an Anti-lock Braking System (ABS) with Electronic Brake Force Distribution and Brake Assist for maximum control. From adjustable head rests and front active and rear autofold head restraints, to LATCH child-seat anchors, child-proof rear door locks and an energy-absorbing steering column, it's clear Hyundai is keeping your safety a priority.



1. Airbags. Get the added peace of mind provided by the advanced coverage of the Santa Fe's six airbags – dual front airbags, together with driver and passenger seat-mounted side-impact airbags and side-curtain, rollover-sensing, roof-mounted airbags.

2. Backup Camera for Safety.

New for 2010, to help you spot children, bikes, and other vehicles, the Limited's available premium navigation system⁹ features a rear camera with high-resolution LCD screen – making backing up safer and easier.



2010 SANTA FE

QUALITY



THE HIGHEST STANDARD OF EXCELLENCE. IT'S HOW WE DEFINE QUALITY. IT'S THE CORNERSTONE OF OUR BUSINESS, AND THE FOUNDATION UPON WHICH WE BUILD EACH AND EVERY HYUNDAI VEHICLE. FROM RESEARCH AND DEVELOPMENT, TO ENGINEERING AND DESIGN, IT IS OUR ENDURING DEDICATION TO QUALITY THAT ENABLES US TO OFFER CANADIANS A LINEUP OF VEHICLES THAT MEET AN EVER-HIGHER STANDARD OF EXCELLENCE.

ONE OF CANADA'S BEST WARRANTIES.

Have the peace of mind that comes with Hyundai Auto Canada's standard 5-year/100,000 km Comprehensive Limited warranty[†] along with a 5-year/100,000 km Powertrain warranty – standard with every Santa Fe. We also provide a 3-year/Unlimited km Roadside Assistance Program which includes fuel delivery service, flat tire changing, lock-out service, towing service, and more. Just one toll-free call away, 24 hours a day.

There are no deductibles and warranties are transferable.

For further details on your warranty coverage, including terms and limitations, please consult the Service Passport that accompanies all new Hyundai vehicles or see your local Hyundai dealer.



DRIVE DEFECTS TO ZERO.

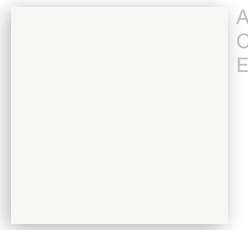
Hyundai embarked on its quality mission in 1999, when it launched its "Zero Defects" program. This initiative involves everyone – from design engineers to the factory workers on the line – and every aspect of the company's culture in a sincere commitment to quality manufacturing across the board. The results are obvious.



COLOURS

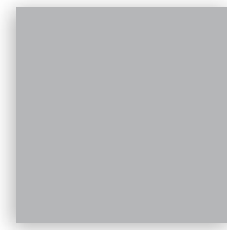
Our vivid palette of exterior colours is the perfect way to complete your Santa Fe. Explore the options and choose the one that best reflects your personal style.

EXTERIOR



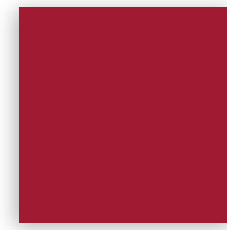
A
C
E

GLACIER WHITE PEARL



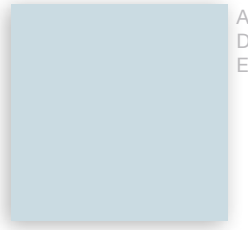
A
D
E

RADIANT SILVER



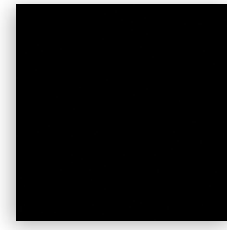
B
C
F

VENETIAN RED



A
D
E

SILVER SKY^A



A
C
E

BLACK NOIR PEARL



A
C
E

GRANITE BLUE

INTERIOR



A

GREY CLOTH



B

BEIGE CLOTH



C

COCOA BLACK CLOTH/LEATHER^{*}



D

GREY CLOTH/LEATHER^{*}



E

COCOA BLACK LEATHER



F

BEIGE LEATHER

^{*} Available on 3.5L Sport Model only.

Choice of interior colour depends upon exterior colour selection. Due to print production processes, the colours shown throughout this brochure may vary slightly from the actual hue.

See your dealer for model applications and to view the Hyundai Colour Selector.

Additional colours will be available at a later date. Visit hyundaicanada.com or see dealer for details.

^Δ Delayed Availability.

ACCESSORIES

Hyundai is making its name by delivering unprecedented quality and value – offering Canadians a wide variety of lifestyle-friendly vehicles loaded with outstanding packages of standard features and premium extras. But your vehicle should be as individual as you. That's why Hyundai goes out of its way to offer you a line of accessories designed to suit specific demands. With Hyundai's line of authorized parts and accessories, you are able to customize and adapt your vehicle to your lifestyle. From a handy trailer hitch kit to stylish side steps and protective rubber floor mats, custom-fit your Santa Fe your way.



1. Roof Racks

This durable, quick-locking roof rack system lets you transport cargo easily, without sacrificing interior room.

2. Trailer Hitch Kit

Designed to meet all your towing needs, a Hyundai hitch can accommodate a wide variety of hitch-mounted accessories. Kit includes the trailer hitch and ball mount. (Chrome ball not included).

3. Side Steps

Stylish and functional, polished stainless steel side steps will add a rugged look to your vehicle.



4. Rear Cargo Mat

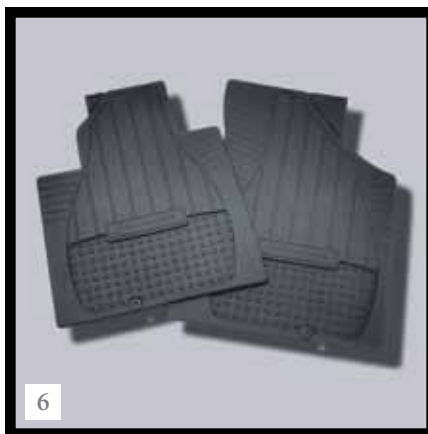
Add years to the interior of your Hyundai by protecting it from spills and messy loads with a durable, custom-fit cargo tray.

5. In-Channel Side Visors

Sleek and sporty, these side visors let you enjoy fresh air even when it's raining. New design ensures a perfect fit every time.

6. Rubber Floor Mats

Protect the interior of your Hyundai from everyday dirt and debris with custom-made floor mats.



MODEL FEATURES

2.4L GL

STANDARD EQUIPMENT:

2.4L, 175 hp, 16-valve, DOHC, 4-cylinder Theta II Engine with Dual Continuously Variable Valve Timing (CVT)

17-inch Alloy Wheels

4-wheel Disc Brakes

6-speed Manual Transmission

Airbags¹: Dual Front Airbags, 2 Seat-mounted Side-impact, 2 Roof-mounted Side Curtains with Rollover Sensor

Air Conditioning with Manual Temperature Controls and 2nd-row Ventilation Ducts

AM/FM/XM/CD/MP3 6-Speaker Audio System with 3-month Trial Subscription

Anti-lock Braking System (ABS) with Electronic Brake Force Distribution (EBD) and Brake Assist (BA)

Black Body Side Mouldings

Bluetooth[®] Handsfree[®] Phone System

Body Colour Door and Rear Liftgate Handles

Body Colour Front and Rear Bumpers

Body Colour Front Grille with Chrome Surround

Body Colour, Power-adjustable, Heated Exterior Mirrors

Cabin Air Filtration System

Centre Console Armrest with Storage and Dual Cupholders

Child-proof Rear Door Locks

Child-seat LATCH System

Cloth Seats and Interior Trim

Cruise Control

Deluxe Cut-pile Carpeting

Deluxe Door Sill Scuff Plate – Plastic with Santa Fe Imprint

Driver's and Front Passenger's Vanity Mirrors with Extensions

ECO Indicator (A/T)

Electronic Stability Control (ESC) with Traction Control System (TCS)²

Energy-absorbing Steering Column

Four 12-volt Outlets

Front and Rear Crumple Zones

Front-wheel Drive

Ignition Immobilization System**

iPod/USB and Aux. Audio Input Plug

Map Lights

Power-assisted Rack-and-pinion Steering

Power Windows with Driver's Auto Up/Down

Rear Window Defroster with Timer

Rear Window Washer/Wiper

Rearview Mirror Manual Day/Night

Remote Hood and Fuel Filler Door Releases

Remote Keyless Entry with Alarm

Roof-mounted Micro Antenna

Roof-rack Side Rails

Seating:

Front, Multi-adjustable Captain's Chairs with Active Head Restraints and Driver's Manual Lumbar Support

2nd-row, 60/40 Split Fold-flat with Height-Adjustable Head Restraints

Suspension:

Front: Twin-tube Gas-filled MacPherson Struts with Stabilizer Bar

Rear: Multi-link with Stabilizer Bar and Gas Shock Absorbers

Steering Wheel-mounted Audio Controls

Tilt-and-telescoping Steering Wheel

Tinted Glass

Windshield Wiper De-icer

Woodgrain Interior Accents

Optional:

6-speed Automatic Transmission with SHIFTRONIC™

3.5L GL

INCLUDES 2.4L GL STANDARD EQUIPMENT PLUS:

3.5L, 276 hp, 24-valve, DOHC, 6-cylinder Lambda II Engine with Dual Continuously Variable Valve Timing (CVT)

6-speed Automatic Transmission with SHIFTRONIC™

Fog Lights

Illuminated Sunvisor

3.5L SPORT

INCLUDES 3.5L GL EQUIPMENT PLUS:

18-inch Alloy Wheels

Heated Front Seats

Leather-wrapped Steering Wheel and Gear Shift Knob

Power Glass Sunroof with One-touch Open

Rear Spoiler

Seating:

Cloth seats with Leather Bolster

Driver's 8-way Power-adjustable Seat with Power-adjustable Lumbar Support

Trip Computer

Optional on 3.5L GL and 3.5L Sport:

All-wheel Drive

3.5L LIMITED

INCLUDES 3.5L SPORT EQUIPMENT PLUS:

Air Conditioning with Dual-zone Automatic Temperature Controls and CleanAir Ionizer

All-wheel Drive

Automatic Light Control

Body Colour Door and Rear Liftgate Handles with Chrome Inserts

Cargo Area 115-Volt Outlet

Deluxe Door Sill Scuff Plate – Metal Grain with Santa Fe Imprint

Electro-chromic Auto-dimming Rearview Mirror with HomeLink™ Transceiver and Compass

Infinity® Logic 7® AM/FM/XM/6-CD Changer/MP3 10-speaker Audio System with 3-month Trial Subscription

Seating:

4-way Power-adjustable Passenger Seat

Leather Seats

3.5L LIMITED WITH NAV

INCLUDES 3.5L LIMITED EQUIPMENT PLUS:

Premium AM/FM/XM/CD/MP3 Audio System with Subwoofer and Amplifier

High-resolution Touch-screen Navigation System*

Rearview Camera

SPECIFICATIONS

PERFORMANCE

					2.4L GL	3.5L GL	3.5L SPORT	3.5L LIMITED	3.5L LIMITED W/NAV
Engine	2.4L	3.5L							
Type	16-valve, DOHC, I4 with Dual Continuously Variable Valve Timing (CVT)	24-valve, DOHC, V6 with Dual Continuously Variable Valve Timing (CVT)							
Displacement	2.4L (2,359cc)	3.5L (3,470cc)							
Bore & Stroke (mm)	88 mm x 97 mm	92 mm x 87 mm							
Compression Ratio	10.5:1	10.6:1							
Horsepower @ RPM	175 @ 6,000 RPM	276 @ 6,300 RPM							
Torque (lb-ft) @ RPM	169 lb ft @ 3,750 RPM	248 lb ft @ 5,000 RPM							
Exhaust	Single	Single							
Variable Intake System (VIS)					S	S	S	S	S
Maximum Towing Capacity (kg)	with Trailer Brake: 907 without Trailer Brake: 749	with Trailer Brake: 1587 without Trailer Brake: 749							
Transmission	6-Speed Manual				S	-	-	-	-
	6-Speed Automatic w/ OD lock-up torque converter				O	S	S	S	S
	SHIFTRONIC™ (A/T only)				O	S	S	S	S
Curb Weight (kg)	2.4L	3.5L							
Manual transmission (FWD/AWD)	1,672/-	-/-							
Auto transmission (FWD/AWD)	1,689/-	1,769/1,868							
Drive Configuration	Front-wheel Drive				S	S	S	-	-
	AWD				-	O	O	S	S
Brakes	Front: Ventilated Disc, Single Piston				S	S	S	S	S
	Rear: Solid Disc, Single Piston				S	S	S	S	S
	ABS with Electronic Brake Force Distribution (EBD) and Brake Assist (BA)				S	S	S	S	S
Electrical System	2.4L	3.5L							
Battery	54 AH	54 AH							
Alternator	13.5V/110A	13.5V/150A							
Ignition	Electronic/Distributorless								
Frame Construction	Unitized Body								
Dimensions	Exterior (mm)	Interior (mm)	1 st Row	2 nd Row					
Wheelbase	2,700	Head Room	1,021	1,005					
Length	4,676	Leg Room	1,082	934					
Height (Includes Roof Rack)	1,725	Hip Room	1,417	1,397					
Width (Excludes Mirrors)	1,890	Shoulder Room	1,511	1,488					
Tread Width (Front/Rear):	1,615/1,620								
Steering Type	Power-assisted Rack-and-pinion								
Turning Diameter (m)	10.79								
Turns, Lock-to-lock	3.02								

O = Optional S = Standard - = Not Available

SPECIFICATIONS

		2.4L GL	3.5L GL	3.5L SPORT	3.5L LIMITED	3.5L LIMITED W/NAV
Suspension	Front: Twin-tube Gas-filled MacPherson Struts with Stabilizer Bar Rear: Multi-link with Stabilizer Bar and Gas Shock Absorbers					
Tires	2.4L and 3.5L GL P235/65R17					3.5L Sport, Limited and Limited with NAV P235/60R18
Wheels (Aluminum Alloy)	17" x 7"					18" x 7"
Fuel Economy						
<i>Fuel Consumption Estimates (L/100 km)[^]</i>	<i>City Highway</i>	<i>City Highway</i>				
2.4L 6-Speed Manual Transmission (FWD)	10.7 7.5	- -				
2.4L 6-Speed Automatic Transmission (FWD)	10.2 7.2	- -				
3.5L 6-Speed Automatic Transmission (FWD/AWD)	10.1 7.6	10.5 7.7				
Fuel Tank Capacity (L)	75					

INTERIOR

Air Conditioning	Manual Temperature Control	S	S	S	-	-
	Dual-zone Automatic Temperature Controls with CleanAir Ionizer	-	-	-	S	S
	2 nd -row HVAC Vents (B Pillar-mounted)	S	S	S	S	S
Audio System	AM/FM/XM/CD/MP3 with Six speakers and 120-watt Maximum Internal Amplifier	S	S	S	-	-
	Infinity [®] Logic 7 [®] AM/FM/XM/6-CD Changer/MP3 10-speaker Audio System with 11-channel, 605-watt Infinity [®] External Amplifier	-	-	-	S	-
	Premium AM/FM/XM/CD/MP3 with Subwoofer and Amplifier	-	-	-	-	S
	Navigation System [†] with 6.5" High-resolution Screen	-	-	-	-	S
	iPod/USB and Aux. Input	S	S	S	S	S
Bluetooth[®] Handsfree[®] Phone System		S	S	S	S	S
Carpet	Premium Cut-pile	S	S	S	S	S
Console	Centre Armrest with Storage and Illuminated Cupholders	S	S	S	S	S
Cruise Control	Steering Wheel-mounted	S	S	S	S	S
Cupholders	Front Centre Console (2), Rear Centre Console (2), Doors (4)	S	S	S	S	S
DC Power Outlet	(12V) Centre Stack-mounted (2), Rear of Centre Console (1), Rear Cargo Area	S	S	S	S	S
Door Trim	Cloth with Map Pocket	S	S	S	-	-
	Simulated Leather with Map Pocket	-	-	-	S	S
Gauges	Speedometer, Temperature, Fuel, Tachometer, Odometer, Trip Odometer	S	S	S	S	S
Illumination	Map Lights, Central Dome with Delay, Glove Box, Hazard	S	S	S	S	S
	Ignition Key Cylinder Surround	S	S	S	S	S
Interior Accents	Woodgrain: Centre Console, Lower Dash, Upper Door Inserts	S	S	S	S	S
Mirrors	Rearview, Manual Day/Night	S	S	S	-	-
	Electro-chromic Auto-dimming Mirror with Compass and HomeLink™ Transceiver	-	-	-	S	S
Power Door Locks	Auto-locking Feature Enabled by Dealer	S	S	S	S	S

SPECIFICATIONS

		2.4L GL	3.5L GL	3.5L SPORT	3.5L LIMITED	3.5L LIMITED W/NAV
Power Windows	With Driver's Auto Up/Down	S	S	S	S	S
Remote Releases	Hood, Fuel Filler Door	S	S	S	S	S
Scuff Plates	Door Sill, Deluxe (Metal Grain*)	S	S	S	S*	S*
Seats (Front)	Multi-adjustable Bucket Seats	S	S	S	S	S
	Driver's Seat Manual-adjustable with Lumbar Support	S	S	-	-	-
	Driver's Seat 8-way Power-adjustable with Lumbar Support	-	-	S	S	S
	Front Passenger 4-way Power-adjustable	-	-	-	S	S
	Heated Front Seats	-	-	S	S	S
Seats (2nd Row)	60/40 Split Bench	S	S	S	S	S
Seat Trim	Cloth	S	S	-	-	-
	Cloth with Leather Bolster	-	-	S	-	-
	Leather	-	-	-	S	S
Shift Knob	Leather-wrapped	-	-	S	S	S
Steering Wheel	Tilting	S	S	S	S	S
	Telescoping	S	S	S	S	S
	Leather-wrapped	-	-	S	S	S
	Steering Wheel-mounted Audio Controls	S	S	S	S	S
Trip Computer		-	-	S	S	S

EXTERIOR

Antenna	Micro, Roof-mounted	S	S	S	S	S
Body Side Mouldings	Embossed Black	S	S	S	S	S
Bumpers (Front/Rear)	Body Colour	S	S	S	S	S
Defroster	Rear Window, Electronic with Timer	S	S	S	S	S
Fog Lights	Front	-	S	S	S	S
Glass	Tinted	S	S	S	S	S
	Rear Windows, Privacy	S	S	S	S	S
Handles	Door and Liftgate, Body Colour	S	S	S	-	-
	Door and Liftgate, Body Colour with Chrome Inserts	-	-	-	S	S
Headlights	Projector-beam	S	S	S	S	S
	Auto Light Control	-	-	-	S	S
Mirrors	Body Colour, Power-adjustable, Heated with Timer	S	S	S	S	S
Rear Spoiler		-	-	S	S	S
Roof-rack Side Rails		S	S	S	S	S
Sunroof	Power Tilt-and-slide One-touch Open	-	-	S	S	S

SPECIFICATIONS

		2.4L GL	3.5L GL	3.5L SPORT	3.5L LIMITED	3.5L LIMITED W/NAV
Wipers	Front: 2-speed with Variable Intermittent	S	S	S	S	S
	Front Windshield Wiper De-icer	S	S	S	S	S
	Rear: Wiper/Washer/Intermittent	S	S	S	S	S

SAFETY

Active Head Restraints	Front	S	S	S	S	S
Airbags¹ (6)	Dual, Driver and Passenger	S	S	S	S	S
	Driver and Front Passenger, Seat-mounted Side-impact	S	S	S	S	S
	Side-curtain (Front and Rear Passengers) w/ Rollover Sensor	S	S	S	S	S
Alarm System	Anti-theft System Integrated with Remote Keyless Entry	S	S	S	S	S
Brakes	Anti-lock Braking System (ABS) with Electronic Brake Force Distribution (EBD) and Brake Assist (BA)	S	S	S	S	S
Child Safety	Child-proof Rear Door Locks	S	S	S	S	S
	Child-seat LATCH System	S	S	S	S	S
Crumple Zones	Front and Rear	S	S	S	S	S
Door Locks	Remote Keyless Entry with Alarm	S	S	S	S	S
Electronic Stability Control (ESC) with Traction Control System (TCS)²		S	S	S	S	S
Ignition Immobilization System^{**}		S	S	S	S	S
Power Window Lock-out Button		S	S	S	S	S
Rearview Camera		-	-	-	-	S
Restraint Systems	Front: Adjustable Shoulder Belt Height, Seatbelt Pretensioners, Force Limiters	S	S	S	S	S
	2 nd Row: 3-point Seatbelts (all positions)	S	S	S	S	S
Steering Column	Energy-absorbing	S	S	S	S	S

STANDARD WARRANTY

Coverage	One of Canada's best warranties					
	5-year/100,000 km Comprehensive Limited Warranty [†]	S	S	S	S	S
	5-year/100,000 km Powertrain Warranty	S	S	S	S	S
	3-year/Unlimited km Roadside Assistance Program ^{††}	S	S	S	S	S

Specifications, features, illustrations, accessories, materials and equipment and all other information shown in this brochure are based on the latest information available at the time of publication. Although descriptions are believed to be correct, accuracy cannot be guaranteed. Hyundai Auto Canada Corp. reserves the right to make any changes or modifications at any time, without notice or obligation, including, without limitation, in colour, specifications, features, accessories, materials, equipment and models. Some vehicles are shown with optional equipment. All Hyundai warranties have no deductible.

[^] Fuel economy figures are based on manufacturer's testing and are used for comparison purposes only. Actual fuel efficiency may vary based on driving conditions and the addition of certain vehicle accessories.

[†] Hyundai's Comprehensive Limited Warranty coverage covers most vehicle components against defects in workmanship under normal use and maintenance conditions.

^{††} Includes fuel delivery service, flat tire changing, lock-out service, towing service and more. Just one toll-free call away, 24 hours a day.

¹ The Supplemental Restraint (Airbag) System (SRS) is designed to work with the 3-point seatbelt system. The SRS deploys in certain frontal and/or side-impact conditions where significant injury is likely. The SRS is not a substitute for seatbelts, which must still be worn at all times. Children under the age of 13 should be securely restrained in the rear seat. NEVER place a child-seat in the front seat of a Hyundai vehicle.

² Electronic Stability Control (ESC) and Traction Control System (TCS) are meant to enhance conscientious driving habits and are not a substitute for safe driving practices.

^{**} CAN/ULC S338-98 compliant immobilizer may reduce insurance costs in some instances.

The Hyundai names, logo, product names, feature names, images and slogans are trade marks owned by Hyundai Auto Canada Corp.

^o When equipped with optional navigation package, Bluetooth[®] Handsfree and the navigation system only recognize English voice commands.

O = Optional S = Standard - = Not Available

At Hyundai Auto Canada, we believe our customers' needs come first. That's why we've invested billions of dollars worldwide in research, design, safety, testing and manufacturing. And with numerous third-party awards for quality, reliability and value, we can't help but be proud. But in the end, it's still about you, our customer. Simply put, we're committed to over-delivering on all your expectations so we can bring you the vehicle you need, as well as the vehicle you want.

hyundaicanada.com

