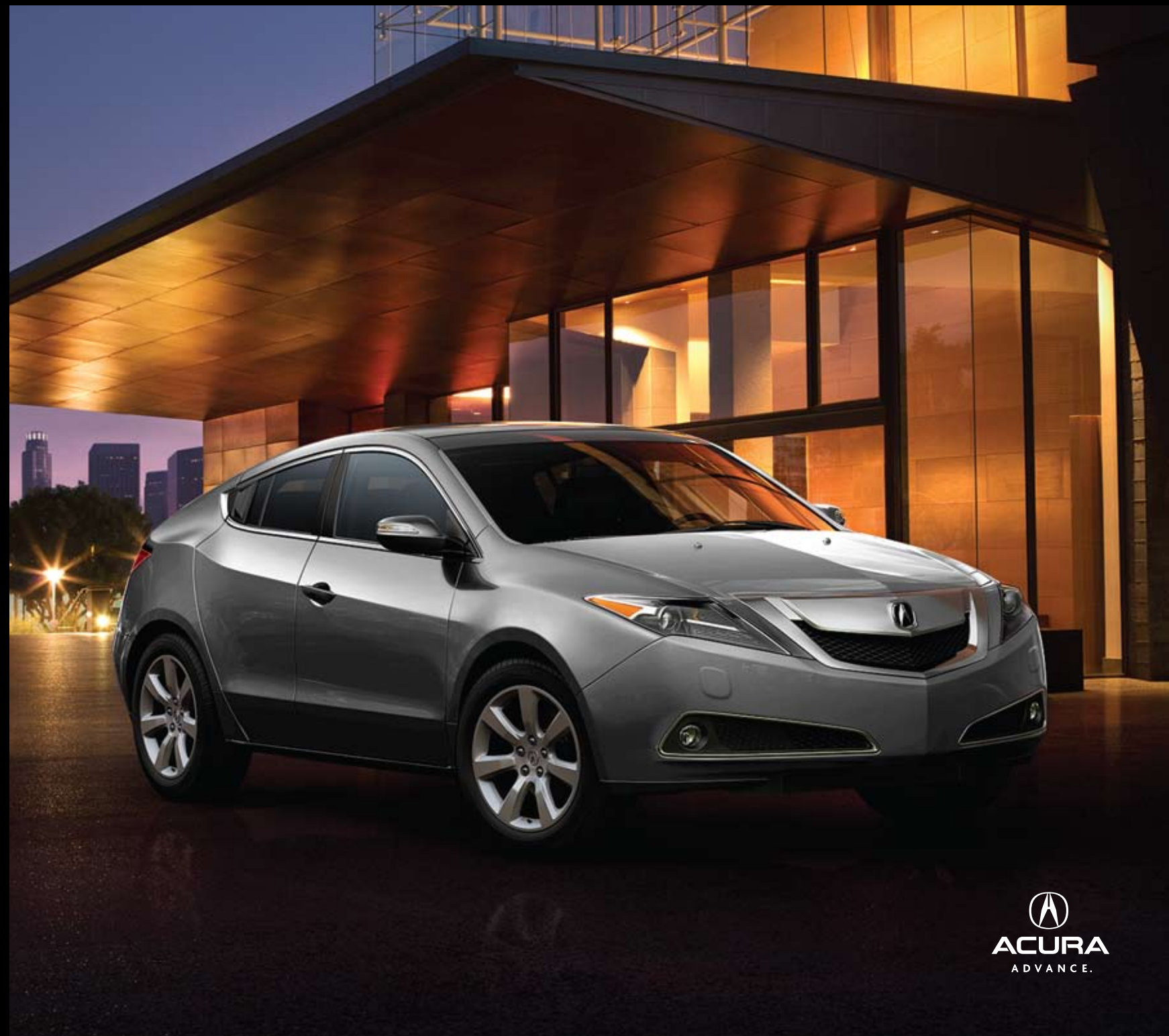




2011

ZDX



ZDX

The art of adrenaline.

The Acura ZDX. A luxury four-door sports coupe built to turn heads. Brimming with sophistication and technologically robust, it is ready to change your perception of what a luxury vehicle can be. With its meticulously crafted finishes, bold exterior and powerful V-6 engine, the ZDX is a seamless fusion of elegant design and agile performance.



Luxury is in the details.

The ZDX's cockpit has been luxuriously crafted with comfort and continuity in mind. Its refined leather dash unfolds with flowing lines culled from the vehicle's exterior vocabulary. In contrast to most luxury vehicles, the ZDX's leather isn't buffed to correct imperfections. Instead, each piece has been carefully selected to ensure premium quality while retaining its rich natural grain. The care that went into the ZDX dash is indicative of the detail reflected throughout the cabin.

Along with the cockpit's material richness, you'll notice on your first drive how little ambient cabin noise there is. That's courtesy of the ZDX's Active Noise Cancellation system, which detects undesirable engine noise and emits opposing frequencies to reduce it. For an even quieter ride, a special seven-layer fabric has been applied to the underbody of the vehicle to help insulate passengers from road noise and vibration.

The future is bright.

How a vehicle looks on the outside provides a window to its inherent nature. In sculpting the ZDX's exterior, a technique called "motion surfacing" was applied – treating the sheet metal as if it were a fluid medium. Every line creates a ripple effect with those around it. The wheels seem to be pushing up through the body. The cabin seems to be stretching from the base of the vehicle. Lines are pulled toward the rear like a slingshot at the moment before release.

To round out the ZDX's lavish interior cabin experience, look up. The panoramic glass roof gives both front and rear passengers abundant natural light, even with the UV-light-filtering sunshade closed. This feat of design required an innovative "top-down" production step that allows the long glass panel to be lowered onto the frame from above. When you experience the sense of space the roof provides both front and rear passengers, you'll agree it was a step well worth taking.

Master every piece of the road.



High-performance engineering is more than a means of filling horsepower-and-torque charts with big numbers. It's about producing efficient, flawless output and generating thrilling response across the entire power band.

At the heart of the ZDX's pulse-pounding drive is Acura's signature VTEC® technology and a 300-hp, 3.7-litre engine, which uses two separate cam profiles for a big boost of torque off the line and elevated horsepower down the road. With a cold-air induction system that packs in more oxygen for more powerful combustion at every stroke and its use of aluminum and magnesium for a lighter and more agile ride, you'll quickly appreciate the power of innovative thinking.


SH-AWD

Turns heads on a dime.

Driving the ZDX is a visceral experience. In addition to its all-weather capability, Acura's exclusive Super Handling All-Wheel Drive™ (SH-AWD®) technology enhances confidence through the curves. Sensing where extra torque is needed to keep you on your chosen line, it can send up to 100% of available rear power to the outside wheel, which is then rotated slightly faster. Together, these forces give the ZDX a big boost in turning power and more precise steering response.



For added control, the 6-speed automatic transmission features a wider gear spread for both quicker acceleration and greater fuel efficiency. Plus, full manual control via steering wheel-mounted paddle shifters can skip gears when downshifting for spirited acceleration after a slowdown. It all makes the ZDX the ideal vehicle for quick getaways, regardless of what the road – or the weather – has in store.

A detailed view of the driver's side of an Acura ZDX. The steering wheel is on the left, with a driver's hand visible. The dashboard features a large navigation screen displaying a map. Below the screen is a central control panel with a digital display showing '477' and 'TRACK'. The gear shift is visible in the center console. The interior is finished with dark leather and light-colored perforated leather on the seats.

In creating the ZDX's cockpit, the goal was to keep the design lines flowing and the technology discreet. The clean, minimalist central control panel, for example, provides a contrast to the richness of the surrounding leather. Along with steering wheel-mounted controls and voice recognition, it gives you intuitive and robust command of the ZDX's abundant technological amenities.

With an Acura Navigation System with trilingual Voice Recognition™, Bluetooth® wireless mobile phone interface, Acura/ELS Surround® Premium Audio System, 15 GB hard disk drive (HDD) storage and a body structure that encases the subwoofer for improved bass response, you've got a cockpit primed for maximum connectivity and arresting audio performance.



At Acura, Safety Through Innovation is based on the idea that an advanced driving experience starts with advanced safety features. This guiding principle is reinforced through the extensive number of standard safety features and use of innovative technologies you'll find in all Acura vehicles.

AIRBAGS

Maximum safety is achieved with six airbags designed to protect all occupants inside the cabin. Depending on the point and force of impact, the ZDX will deploy dual-stage, dual-threshold front airbags (SRS) that activate at one of two rates depending on the severity of the impact; front side airbags with the innovative passenger-side Occupant Position Detection System (OPDS) that will not release if the system detects a child or small-sized passenger; and side curtain airbags with a state-of-the-art rollover sensor.

ACTIVE HEAD RESTRAINTS

The active front seat head restraints in the ZDX are designed to restrain head motion in the event of a rear impact and minimize neck injury.

ABS

The Anti-lock Braking System (ABS) helps maintain steering control when braking hard on wet, slippery or loose surfaces, while Electronic Brake Distribution (EBD) balances braking forces at each wheel to help compensate for cargo and passenger weight distribution inside the cabin.

TIRE PRESSURE

The ZDX's Tire Pressure Monitoring System (TPMS) continually monitors the air pressure in your tires. If pressure drops in any one, a warning appears on your instrument panel, indicating which tire requires attention.

ACE™ BODY STRUCTURE

The Advanced Compatibility Engineering™ (ACE) body structure utilizes a high-tensile, high-efficiency steel body structure to provide enhanced protection from a multi-directional collision. ACE reduces the force of a frontal impact by absorbing energy over a large area and dispersing it away from you and other occupants of the cabin. ACE is also designed to help reduce occupant injuries caused by misalignment in collisions between vehicles of different sizes.

MULTI-VIEW REAR CAMERA*

The ZDX with Technology Package model features a multi-view rear camera that shows a colour image of the area directly behind your vehicle on your navigation-system screen. Even if the navigation system is turned off, the camera is activated automatically when you engage reverse.

VEHICLE STABILITY ASSIST (VSA®)

The VSA system with Traction Control automatically detects and helps correct understeer or oversteer situations, sometimes before you're aware there's a problem. The system intuitively analyzes the conditions and reduces throttle and/or applies braking to individual wheels. Should a loss of traction occur on a slippery surface, Traction Control will help compensate to get you underway safely.

*Does not replace the driver's responsibility to exercise due care while reversing.

ENGINE

Engine	3.7-litre, 24-valve, SOHC, VTEC® V-6
Horsepower	300 hp @ 6300 rpm
Torque	270 lb.-ft. @ 4500 rpm
Displacement	3664 cc
Bore and stroke	90 x 96 mm
Compression ratio	11.2:1
Emissions	Tier 2 Bin 5
Recommended fuel	Premium unleaded

Horsepower & Torque (SAE net, Rev. 08/04, SAE J1349)

DRIVETRAIN

6-speed automatic transmission with paddle shifters and Grade Logic Control
 Super Handling All-Wheel Drive™ (SH-AWD®)
 Towing capacity: 680 kg (1500 lb.)

SAFETY

4-wheel Anti-lock Braking System (ABS) with Electronic Brake Distribution (EBD)
 Active front seat head restraints
 Advanced Compatibility Engineering™ (ACE™) body structure
 Battery management system (BMS)
 Childproof rear door locks
 Co-operative Vehicle Stability Assist (VSA®) with Traction Control
 Dual-stage, dual-threshold front airbags (SRS)
 Front side airbags with passenger-side Occupant Position Detection System (OPDS)
 Hill Start Assist (HSA)
 Immobilizer Theft-Deterrent System
 Lower Anchors and Tethers for Children (LATCH) child-seat mounting system positions in 2nd row (3)
 Side curtain airbags with rollover sensor
 Tire Pressure Monitoring System (TPMS) with location and pressure indicators

CHASSIS

19" aluminum-alloy wheels
 MacPherson strut front independent suspension
 Multi-link independent rear suspension with trailing arm
 Power-assisted, ventilated front disc/drum-in-disc rear brakes
 Tires: P255/50 R19 all-season
 Torque-sensing, variable power-assisted rack-and-pinion hydraulic power steering

EXTERIOR

Panoramic glass roof with power sunshade
 Body-coloured heated folding power-adjusting side mirrors with reverse gear tilt-down and integrated turn indicators
 High-Intensity Discharge (HID) headlamps
 Halogen high-beam headlamps
 Headlamp washers
 Fog lights
 Light-emitting diode (LED) taillamps
 Rear spoiler with integrated brakelight
 Dual-outlet exhaust

CAPACITIES

Cargo volume	745 litres
Cargo volume, with 2nd row folded	1580 litres
Fuel tank capacity	79.5 litres
Passenger volume	2582 litres

FUEL ECONOMY

City	12.7 litres/100 km*
Highway	8.8 litres/100 km*

COMFORT & CONVENIENCE

Active Noise Cancellation
 Acura Navigation System with trilingual Voice Recognition™ and multi-view rear camera†
 Automatic day/night rearview mirror
 GPS-linked dual-zone automatic climate control system with sun positioning sensor
 HandsFreeLink™-bilingual Bluetooth® wireless mobile phone interface
 HomeLink® remote system
 Keyless Access System (smart entry and pushbutton ignition)
 Maintenance Minder system
 Multi-Information Display (MID)
 Power tailgate
 Power tilt and telescopic steering column
 Remote-linked 2-position memory system for driver's seat, steering column, side mirrors and climate control
 Steering wheel-mounted cruise controls

ENTERTAINMENT

Acura/ELS Surround® 410-watt Premium Audio System with DVD-Audio, AM/FM/XM®† tuner, MP3/Windows Media® Audio compatibility, DTS®, Dolby® Pro Logic™ II, Song By Voice™ and 10 speakers including subwoofer
 1 CD changer with 15 GB hard disk drive (HDD) storage (navigation and audio)
 Bluetooth® Audio
 MP3/auxiliary input jack
 USB device connector

ACCESSORIES

19" aluminum-alloy wheel	Interior wood trim
20" aluminum-alloy wheel	Locking wheel nuts
All-weather floor mats – black or grey	Rear backup sensors‡
Ashtray – cup holder style	Rear splash guards
Body side mouldings	Remote engine starter
Cargo cover	Shift knob – wood (automatic transmission)
Cargo net	Sport running boards – with LED lights
Cargo tray	Steering-wheel garnish – wood
Cigarette lighter	Trailer hitch and harness
Decklid spoiler	Trailer hitch ball – 1 7/8" or 2"
Engine block heater	

SEATING & TRIM

60/40 split flat-folding 2nd-row seat
 Driver's seat with 10-way power adjustment including 2-way power lumbar support and 2-position memory
 Front passenger's seat with 8-way power adjustment
 Heated seats in 1st- and 2nd-row outboard positions
 Leather instrument panel and centre console
 Perforated Premium Milano leather-trimmed interior

EXTERIOR DIMENSIONS

Curb weight	2016 kg
Height	1596 mm
Length	4887 mm
Overhang – front/rear	1090/1047 mm
Track – front/rear	1720/1719 mm
Turning diameter, curb to curb	5.7 m
Wheelbase	2750 mm
Width (including sideview mirrors)	2174 mm
Width (excluding sideview mirrors)	1993 mm

INTERIOR DIMENSIONS

Headroom – front/rear	966/896 mm
Hip room – front/rear	1456/1404 mm
Legroom – front/rear	1083/790 mm
Shoulder room – front/rear	1516/1406 mm

*Use kilometrage for comparison purposes only. Your kilometrage may vary.

†Includes a no-charge trial of 3 months, beyond which service fees apply. Available in 10 Canadian provinces and 48 contiguous U.S. states. See terms and conditions at www.xmradio.ca.

‡Does not replace the driver's responsibility to exercise due care while reversing.

ACCESSORIES

Your Acura,
Your Way.

Make your Acura uniquely yours. Choose from an array of Genuine Acura accessories that give you the practical luxuries and advanced styling you won't want to live without.



U.S. model shown.



PROTECTION PACKAGE
All-weather floor mats – black or grey
Cargo tray

TOWING PACKAGE
Trailer hitch and harness
Trailer hitch ball – 1 7/8" or 2"

REMOTE ENGINE STARTER PACKAGE

SPORT PACKAGE
19" aluminum-alloy wheels
Decklid spoiler
Sport running boards – with LED lights

- 1. CARGO NET
- 2. CARGO TRAY
- 3. INTERIOR WOOD TRIM
- 4. CARGO COVER



- ACCESSORIES AVAILABLE:**
- 19" aluminum-alloy wheel
 - 20" aluminum-alloy wheel
 - All-weather floor mats – black or grey
 - Ashtray – cup holder style
 - Body side mouldings
 - Cargo cover
 - Cargo net
 - Cargo tray
 - Cigarette lighter
 - Decklid spoiler
 - Engine block heater
 - Interior wood trim
 - Locking wheel nuts
 - Rear backup sensors
 - Rear splash guards
 - Remote engine starter
 - Shift knob – wood (automatic transmission)
 - Sport running boards – with LED lights
 - Steering-wheel garnish – wood
 - Trailer hitch and harness
 - Trailer hitch ball – 1 7/8" or 2"

- 5. BODY SIDE MOULDINGS
- 6. SPORT RUNNING BOARDS – WITH LED LIGHTS
- 7. SHIFT KNOB – WOOD (AUTOMATIC TRANSMISSION)
- 8. STEERING-WHEEL GARNISH – WOOD
- 9. ALL-WEATHER FLOOR MATS – BLACK
- 10. REAR BACKUP SENSORS
- 11. DECKLID SPOILER
- 12. TRAILER HITCH AND HARNESS
- 13. REAR SPLASH GUARDS
- 14. 20" ALUMINUM-ALLOY WHEEL



At Acura, when innovation and performance meet purpose, remarkable things can be achieved. Through our commitment and continued involvement with events and organizations across Canada, we seek to create engaging and inspiring experiences for our customers and our community. Because at Acura we believe exhilaration goes beyond the driver's seat.



HOTELS

Acura has teamed up with W Hotels – a global luxury chain – to provide a fully loaded partnership that offers guests complimentary transportation in an Acura vehicle. The Whatever/Whenever® service gets guests where they need to go in advanced luxury and style.



The Canada Running Series includes a number of competitive running events across Canada that raise money and awareness for charities. We are proud to be the title sponsor of the Acura Toronto 10-Miler & 5K Run in support of the Canadian Cancer Society, an organization dedicated since 1938 to improving the lives of people living with cancer.



PRESENTING SPONSOR
CANADIAN BROADCAST

Acura is honoured to be the Canadian broadcast sponsor of golf's most historic and time-honoured tournament. The Masters is golf's first major open of the season and is famous for its ceremonial "Green Jacket" winner's presentation.

Driving a luxury vehicle should go beyond engineering and amenities. That's why Acura is committed to ensuring your ownership experience is equally luxurious. New Acura owners benefit from four-year 24-hour Roadside Assistance, which includes Dispatch Emergency Roadside Service, Emergency Lockout Service and Traffic Accident Services. See your Acura Retailer for details.

WARRANTY

Your new Acura vehicle comes with the following warranties: Major Component – 5-year/100,000-km limited warranty • Vehicle – 4-year/80,000-km Distributor's limited warranty • Rust Perforation – 5-year unlimited-distance warranty • Surface Corrosion – 4-year/80,000-km • Accessories – 4-year/80,000-km limited warranty (when installed by an authorized Acura Retailer at time of new vehicle delivery). Regular maintenance items and parts are subject to normal wear and replacement, and are not covered by warranty. Certain other items are excluded and certain conditions apply. See your Acura Retailer for details.

ACURA PLUS

Extend your worry-free ownership experience by purchasing additional coverage. Choose from Acura's flexible selection of Mechanical Coverage that extends up to 8 years or 200,000 km, whichever comes first. See your Acura Retailer for details.

LEASING AND FINANCING

Owning your Acura is easy. See your Acura Retailer for complete details on: Acura Leadership Leasing,* Acura Future Value Financing* and Conventional Financing.*

*A genuine service of Honda Financial Services. Conditions, restrictions and prepayment requirements might apply. O.A.C. Acura Future Value Financing does not apply in the province of Quebec.

ZDX

COLOUR & TRIM

EXTERIOR AND INTERIOR ZDX with Technology Package



Aspen White Pearl | NH-677P



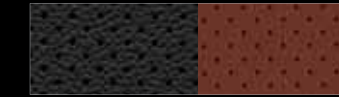
Crystal Black Pearl | NH-731P



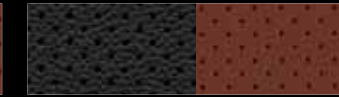
Grigio Metallic | NH-736M



Palladium Metallic | NH-743M



Ebony or Umber Leather



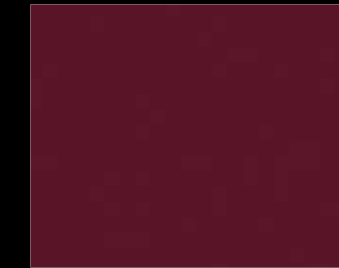
Ebony or Umber Leather



Ebony Leather



Ebony or Taupe Leather



Dark Cherry Pearl | R-529P



Ionized Bronze Metallic | YR-580M



Ebony Leather



Ebony Leather

2011 ZDX model shown. Specifications, features, illustrations and equipment shown in this catalogue are based upon the latest available information at the time of publication. Remember your seat belts. It's a simple fact of life. Although descriptions are believed to be correct, accuracy cannot be guaranteed. Honda Canada Inc. reserves the right to make changes at any time, without notice or obligation, in colours, specifications, accessories, materials and models. Some vehicles are shown with optional equipment. Some vehicles shown are U.S. models. Canadian specifications may vary. Refer to the owner's manual for detailed towing information. Map Database of the Acura Navigation System covers major metropolitan areas in southern Canada and the 48 contiguous U.S. states. For a list of current detailed coverage areas, refer to the Acura web site, www.acura.ca. Bluetooth is a registered trademark of SIG Inc. Dolby and Pro Logic are registered trademarks or trademarks of Dolby Laboratories. DTS is a registered trademark of DTS, Inc. ELS Surround is a registered trademark of Panasonic Corporation of North America. HomeLink and HandsFreeLink are registered trademarks or trademarks of Johnson Controls Technology. HomeLink can be programmed with codes of up to three remote-control devices (e.g., garage-door opener, home security system, etc.). Additional control devices not provided by Acura may be required. Whatever/Whenever is a registered trademark of Starwood Hotels & Resorts Worldwide Inc. Windows Media is a registered trademark of Microsoft Corporation. XM is a registered trademark of XM Satellite Radio Inc. Acura, ZDX, VTEC, SH-AWD, Super Handling All-Wheel Drive, ACE, Advanced Compatibility Engineering, Acura Navigation System with trilingual Voice Recognition, VSA and Song By Voice are trademarks of Honda Motor Co., Ltd. Acura, a division of Honda Canada Inc., 180 Honda Boulevard, Markham, Ontario, Canada L6C 0H9. 1-888-9-ACURA-9. www.acura.ca.