

2011 MUSTANG



ford.ca



Drive one.

More power to THE PONY



Closed course. Professional driver. Do not attempt.

All-new aluminum engines shout higher, more intense performance – for both V6 and GT. The most powerful production V6 and GTs ever are now armed with all-new 6-speeds. Efficiency is unsurpassed.¹ Choose coupe, convertible or glass roof. No excuses: This is the year of your Mustang.

¹Based on 10.7L/100 km city and 6.4L/100 km hwy. for V6 Coupe with automatic transmission, and 12.2L/100 km city and 7.6L/100 km hwy. for GT with manual or automatic transmission. Fuel consumption ratings based on Transport Canada approved test methods.

2011 **MUSTANG**

ford.ca



Drive one.

V6@305 HP +

6.4 L/100 km



Can't touch this new Mustang V6. 305 horses and a class-best¹ 6.4L/100 km hwy.² No other vehicle beats that combo.³ The all-new, 3.7L aluminum engine boasts dual-overhead cams and Ti-VCT (twin independent variable camshaft timing). Translation: maximum off-the-line acceleration. New 6-speed control in the palm of your hand. The X-pipe dual exhaust is new too. Its wide, bright tips howl out a deep, rich tone – unique to V6, especially at full tilt. Yet more reasons why Mustang is Canada's favourite sports car.⁴

The New Mustang V6 ■ 280 lb.-ft. of torque with plenty of low-end oomph ■ Recalibrated suspension componentry and new electronic power-assisted steering make for greater handling ■ Now standard: limited-slip rear axle transfers driving force to rear wheel with most traction ■ Bright Pony is flanked by satin chrome on grille ■ Polished 18-in. cast-aluminum wheels perform as good as they look ■ More eye-catching cues include lower body tape stripes, a decklid spoiler and fog lamps ■ New rear head restraints can be folded down ■ Auto-indexing door windows ensure a tight seal ■ An engine block heater is available, and so is a Power Code™ Remote Start System (for automatic transmissions only) ■ Interior Upgrade Package available with MyColor,® ambient lighting, bright pedal covers, aluminum accents, heated front seats, Ford SYNC,® plus much more

¹Class is V6 and V8 Sports Cars. ²10.7L/100 km city and 6.4L/100 km hwy. for V6 Coupe with automatic transmission. Fuel consumption ratings based on Transport Canada approved test methods. ³Versus 2009/2010 models. ⁴Based on total sales for calendar year 2009.

Mustang V6 • Performance White • Available Equipment

2011 MUSTANG

ford.ca  Drive one.

The wait is over. Mustang GT pounds pavement with an advanced, all-new take on the 5.0L V8. Mod 5.0 graphics debuted on the hood scoop of a 1978 Mustang II King Cobra. The actual 5.0 badge of honor made its first appearance the following model year, creating a loyal legion of fans in the process. 1995 models – cresting at 240 hp – were last to flaunt the hi-po 5.0. Until now: Output reverberates with an astounding 412 hp¹ and 390 lb.-ft. of torque.¹ This baby kicks and screams like the day it was born, only way stronger.

Legendary THUNDER RETURNS



The all-new, all-powerful 5.0L V8 ■ Aluminum cylinder block with optimized bay-to-bay breathing ■ Aluminum, hi-flow 4-valve-per-cylinder heads lend volumetric efficiency ■ Torque-actuated Ti-VCT (twin independent variable camshaft timing) adjusts valvetrain intake in microseconds ■ Dual-overhead-cam, compact Roller-Finger Followers configured for aggressive cam-lift rates ■ Unique tubular exhaust headers maximize pulse separation ■ Forged-steel crankshaft is fully counterweighted ■ Nodular iron, cross-bolted main bearing caps contain upsized bolts ■ Deep-sump, stamped-steel oil pan enables a sustained, high-range rpm

¹Figure achieved using premium unleaded fuel.

Mustang GT • Race Red • Available Equipment

2011 MUSTANG

ford.ca



Drive one.

GT @ 412 HP¹ + 390 TORQUE¹

Mustang GT tops any enthusiast's wish list. The all-new 5.0L V8 raises desire tenfold, especially its pulse-popping, 82-hp-per-litre force. Redline is pushed to 7,000 rpm. Compression ratio is formulated to 11:1.

Transmission is optimized to 6 speeds, with the benefit of 7.6L/100 km hwy.² New handling dynamics include electronic power-assisted steering for optimal all-speed performance; re-tuned struts and shocks for improved ride and balance; plus larger-diameter stabilizer bars and brakes for tighter cornering. GT — for ultimate kicks.



The New Mustang GT ■ Unique front end cheats the wind to help create a low drag coefficient and reduced aerodynamic lift ■ Bright, rolled 3.5-in. tips on H-pipe dual exhaust ■ Signature, throaty V8 rumble is specially piped into the cabin ■ New rear lower control arms, and now a skip shift for the manual transmission ■ Fog lamps housed in the grille, on either side of exclusive-to-GT dark chrome Pony ■ Leather-trimmed interior with contrast stitching ■ All-new California Special Edition available with chrome billet-style grille and GT/CS side stripes is loaded with many more exclusive exterior cues and interior accents ■ All-new GT Brake Performance Package available with unique 19-in. wheels and electronic stability tuning

¹Figure achieved using premium unleaded fuel. ²12.2L/100 km city and 7.6L/100 km hwy. for GT with manual transmission. Fuel consumption ratings based on Transport Canada approved test methods.

Mustang GT • Grabber Blue • Available Equipment



2011 MUSTANG

ford.ca



Drive one.

Mustang Convertible ■ Designed from the ground up ■ Z-brace added and V-brace stiffened for greater structural rigidity ■ Low-profile power top Z-folds out of sight ■ Top is weatherproofed outside, tailored inside, sound-deadened in between ■ Glass rear window with defroster ■ Vinyl top standard, cloth top optional

Mustang Glass Roof ■ Installed right at the factory ■ Tinted, high-performance safety glass helps keep the cabin cool – fully filtering 96% of ultraviolet rays and 90% of infrared rays ■ Includes a retractable, built-in shade ■ Transparent acoustic layer helps reduce wind and road noise

Twice as BREATH TAKING

Freedom of expression taken to a big-time, glorious extreme. Just the ticket for those who want to expand their horizons. Go open-air convertible – where your wind-in-hair passion knows no bounds. Or go 4-season glass roof – where even the weather can't spoil your 24/7 thrills. Either version available in V6 or GT style. Unparalleled variety. Unbelievably fun.



Mustang GT Convertible • Grabber Blue • California Special Edition • Available Equipment | Mustang V6 Glass Roof • Ingot Silver Metallic • Available Equipment

2011 **MUSTANG**

ford.ca



Drive one.

Even within,
awe-inspiring

Interior allure rivals that of the jaw-dropping exterior. Craftsmanship is nothing less than world class. Premium materials abound: from the seamless, soft-touch instrument panel to the available, genuine-aluminum accents. Driver-variable ambient lighting¹ radiates hi-tech prowess. As does MyColor^{®1}— with literally 125 combinations of hues — allowing you to customize the full complement of gauges. Mustang at its finest.



Mustang GT • Charcoal Black Leather Trim • Cashmere-Coloured Racing Stripe
• Premier Trim With Colour Accent Package • Available Equipment



Nothing like it

10 Class Exclusives

1. Ford SYNC^{®1}
2. Steering wheel-mounted navigation/ phone controls¹
3. Shaker[™] audio¹
4. Electronic power-assisted steering
5. Ambient lighting¹
6. MyColor¹
7. MyKey[™] owner controls feature
8. Glass roof¹
9. Easy Fuel[®]
10. Power sideview mirrors w/integrated blind spot mirrors

¹Available.

2011 **MUSTANG**

ford.ca



Drive one.



MYKEY™ owner controls feature is an industry-first. It allows you to assign separate keys to enforce specific driving restrictions – including top speed and audio volume. Especially helpful when it comes to that hot-shot valet.



REAR VIEW CAMERA is an optional help. Shift into reverse – a full-colour image from the spoiler-mounted camera appears in your rearview mirror, or on the available navigation screen.

SYNC SAY THE WORD

AWARD-WINNING FORD SYNC® voice-activated, in-vehicle communications and entertainment system – standard on GT, available on V6. Works with your paired Bluetooth®-enabled mobile phone and digital media player or USB drive. Delivers hands-free calling. Plays your music. All with the touch of a button and your voice! It also features 911 Assist.^{TM2}



Special OPS

VOICE-ACTIVATED NAVIGATION SYSTEM features the same speech-recognition setup as SYNC. The 8-in. LCD touch screen displays a host of services, including Route Guidance – directions are conveyed aloud. Bonus: This system also has nearly 10 GB of storage space for your photos and music (up to 2,400 songs). It's all part of the optional Next Gen Navigation System Package that includes dual-zone electronic automatic temperature control.



SIRIUS® SATELLITE RADIO is standard on GT and available on V6. It comes with a 6-month prepaid subscription.³ Surf up to 120 channels including 100% commercial-free music, plus, the best sports, news, talk and entertainment – all across Canada.

AUDIO INPUT JACK connects your portable media player to the Mustang sound system. Pump out your favorites on the go.

ALL-NEW 6-SPEED TRANSMISSION is designed for peak performance and efficiency across the powerband. Manual standard. Automatic optional.

*Some mobile phones and some digital media players may not be fully compatible. Driving while distracted can result in loss of vehicle control. Only use mobile phones and other devices, even with voice commands, when it is safe to do so. ²The vehicle's electrical system (including the battery), the wireless service provider's signal and a connected mobile phone must all be available and operating for 911 Assist to function properly. These systems may become damaged in a crash. The paired mobile phone must be connected to SYNC, and the 911 Assist feature enabled, in order for 911 to be dialed. ³See your Ford of Canada Dealer or contact SIRIUS at 1-888-539-7474 for more information.

Mustang GT • Available Equipment

2011 MUSTANG

ford.ca



Drive one.

STANDARD FEATURES

Mechanical

4-wheel disc Anti-Lock Brake System (ABS)
 All-speed traction control
 Coil-over-strut front suspension
 Coil spring 3-link solid-axle rear suspension
 Electronic power-assisted steering

Seating

50/50 split-fold rear seat (coupe only)

Interior

4-gauge instrument cluster with chrome accents
 Air conditioning
 Auxiliary audio input jack
 Cruise control
 Cupholders (2)
 Full centre floor console with armrest and locking storage
 Ice Blue™ lighting
 Interior trunk release
 Message centre
 Power door locks
 Power windows with one touch-up/-down feature
 Tilt steering column

Exterior

Complex-reflector halogen headlamps
 Easy Fuel® capless fuel filler
 Light-emitting diode (LED) tail lamps – Sequential
 Rear-window defroster
 Variable-intermittent windshield wipers

Safety & Security

Personal Safety System™ with dual-stage front airbags¹
 Front-seat side airbags¹
 AdvanceTrac® ESC (electronic stability control)
 Belt-Minder™ front safety belt reminder
 Illuminated entry
 LATCH – Lower anchors and tether anchors for child-safety seats
 MyKey™ owner controls feature
 Remote Keyless Entry System with integrated key transmitter remotes (2)
 Safety belt restraint system – Manual 3-point shoulder and lap safety belt system for all seating positions
 SecuriLock® Passive Anti-Theft Engine Immobilizer System
 Side-intrusion door beams
 SOS Post-Crash Alert System™
 Tire Pressure Monitoring System (excludes spare)

2011 Estimated Fuel Consumption Ratings²

3.7L V6 engine Manual transmission

11.1L/100 km city and 6.9L/100 km hwy.
 (25 mpg city/41 hwy.)

3.7L V6 engine Automatic transmission

Coupe – 10.7L/100 km city and 6.4L/100 km hwy.
 (26 mpg city/44 hwy.)

Convertible – 10.8L/100 km city and 6.7L/100 km hwy.
 (26 mpg city/42 hwy.)

5.0L V8 engine Manual transmission

12.2L/100 km city and 7.6L/100 km hwy.
 (23 mpg city/37 hwy.)

5.0L V8 engine Automatic transmission

11.8L/100 km city and 7.8L/100 km hwy.
 (24 mpg city/36 hwy.)

Dimensions & Capacities

Exterior mm (in.)	Coupe/Convertible
Wheelbase	2,720 (107.1)/2,720 (107.1)
Length	4,778 (188.1)/4,778 (188.1)
Height	1,412 (55.6)/1,425 (56.1)
Width – Excluding mirrors	1,877 (73.9)/1,877 (73.9)
Width – Including mirrors	2,035 (80.1)/2,035 (80.1)

Interior – Front

Head room	978 (38.5)/986 (38.8)
Shoulder room	1,405 (55.3)/1,405 (55.3)
Hip room	1,356 (53.4)/1,356 (53.4)
Leg room	1,077 (42.4)/1,077 (42.4)

Interior – Rear

Head room	881 (34.7)/927 (36.5)
Shoulder room	1,311 (51.6)/1,143 (45.0)
Hip room	1,189 (46.8)/1,148 (45.2)
Leg room	757 (29.8)/757 (29.8)

Capacities

Passenger volume litres (cu. ft.)	2,359 (83.3)/ 2,294 (81.0)
Luggage capacity litres (cu. ft.)	379 (13.4)/272 (9.6)
Total interior volume litres (cu. ft.)	2,738 (96.7)/ 2,566 (90.6)
Fuel capacity (litres)	61/61

Power Code is a trademark of Code Systems, Inc.

Microsoft is a registered trademark of Microsoft Corporation.

Bluetooth is a registered trademark of Bluetooth SIG, Inc.

"SIRIUS," the SIRIUS dog logo, channel names and logos are trademarks of SIRIUS XM Radio Inc. Subscriptions governed by SIRIUS Terms and Conditions at siriuscanada.ca.

Brembo is a trademark of Brembo S.p.A.

¹Always wear your safety belt and secure children in the rear seat. ²Fuel consumption ratings based on Transport Canada approved test methods.

2011 MUSTANG

ford.ca



Drive one.



V6

Includes all standard features, plus:

Mechanical

3.7L Ti-VCT V6 engine with 305 hp @ 6,500 rpm
and 280 lb.-ft. of torque @ 4,250 rpm

6-speed manual transmission

3.31:1 gear ratio with limited-slip differential

Compact spare tire (convertible only)

Seating

6-way power driver's seat with power lumbar

2-way manual front-passenger seat

Interior

Carpeted front floor mats with Pony logo

Cloth-trimmed seats

Door-panel inserts

Premium AM/FM stereo/single-CD audio system with MP3 capability

Exterior

18-in. polished cast-aluminum wheels

Automatic headlamps

Body-colour power sideview mirrors with integrated blind spot mirrors

Fog lamps

Lower door tape stripe

Rear spoiler

Stainless steel dual exhaust with 3.5-in. tips

Unique Pony grille

Vinyl top (convertible only)



GT

Includes select V6 features, plus:

Mechanical

5.0L Ti-VCT V8 engine with 412 hp @ 6,500 rpm
and 390 lb.-ft. of torque @ 4,250 rpm

3.55:1 gear ratio with limited-slip differential (manual transmission)

Seating

6-way power front-passenger seat

Heated front seats

Leather-trimmed seats

Interior

6-gauge cluster with MyColor® illumination

Ambient lighting

Bright-aluminum instrument panel appliqué, pedal covers, door sill scuff plates and shifter knob

Bright-chrome door speaker surrounds

Ford SYNC® voice-activated communications and entertainment system

Leather-wrapped steering wheel with aluminum spokes

Shaker™ 500 Audio System with AM/FM stereo/single-CD player with MP3 capability, 8 speakers and 500 watts

SIRIUS Satellite Radio with 6-month prepaid subscription

Universal garage door opener

Exterior

18-in. wide-spoke painted-aluminum wheels

Dark-chrome Pony badge located in grille

Fog lamps

V6



18-in. Polished-Aluminum Wheels
Standard

MUSTANG V6 BODY STYLES



Coupe



Glass Roof



Convertible



Mustang V6 • Saddle Leather Trim • Interior Upgrade Package • Available Equipment



Mustang V6 • Black

V6 OPTIONAL FEATURES

V6 Options

6-speed automatic transmission
Cloth power convertible top
Engine block heater
Glass roof with retractable shade (coupe only – not available with Stone interior)
HID headlamps (requires Security Package)
Leather-trimmed seats (requires Interior Upgrade Package)
Power Code™ Remote Start System (requires automatic transmission)
Rear view camera (requires Interior Upgrade Package)
Soft boot for convertible top
Tape stripe delete

V6 Packages

Comfort Package includes 6-way power front-passenger seat, and heated front seats

Interior Upgrade Package includes 6-gauge instrument cluster with MyColor®; ambient lighting; leather-wrapped steering wheel with satin-aluminum spokes; satin-aluminum-finish instrument panel, air vents, door handles and scuff plates; satin-aluminum-plated shift lever (automatic) or bright polished shift knob (manual); Ford SYNC®; Shaker™ 500 Audio System with AM/FM stereo/single-CD player with MP3 capability, 8 speakers and 500 watts; SIRIUS Satellite Radio with 6-month prepaid subscription; universal garage door opener; Dark Charcoal door-panel inserts; and Comfort Package

Security Package includes Active Anti-Theft System and wheel locks

Exterior Colours	Cloth Interiors	Leather Interiors	Top Colours	Stripe Colours
Grabber Blue	●	◆	▲	◇
Performance White	● ●	◆ ◆	▲ ▲	◇ ◆
Kona Blue Metallic	● ●	◆ ◆	▲ ▲	◇ ◆
Race Red	● ●	◆ ◆	▲ ▲	◇ ◆
Red Candy Metallic Tinted Clearcoat ¹	● ●	◆ ◆	▲ ▲	◇ ◆
Black	● ●	◆ ◆	▲ ▲	◇ ◆
Sterling Gray Metallic	● ●	◆ ◆	▲ ▲	◇ ◆
Ingot Silver Metallic	● ●	◆ ◆	▲ ▲	◇ ◆

Interiors: ● Stone Cloth ● Charcoal Black Cloth ◆ Stone Leather ◆ Charcoal Black Leather
 ◆ Saddle Leather ▲ Stone Vinyl Convertible Top ▲ Black Vinyl Convertible Top ◆ Satin Black Tape Stripe
 ◇ White Tape Stripe

¹Additional charge.

EXTERIOR



Grabber Blue



Performance White



Kona Blue Metallic



Race Red



Red Candy Metallic Tinted Clearcoat



Black



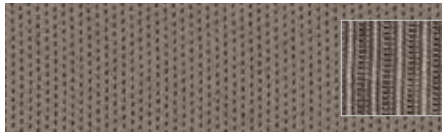
Sterling Gray Metallic



Ingot Silver Metallic

Colours are representative only. See your Ford of Canada Dealer for actual paint/trim options.

INTERIOR



Stone Cloth Standard



Stone Leather Optional



Charcoal Black Cloth Standard



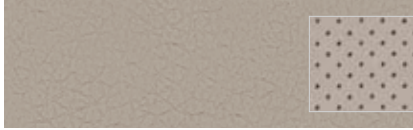
Charcoal Black Leather Optional



Saddle Leather Optional

GT

INTERIOR



Stone Leather
Standard



Charcoal Black Leather
Standard



Saddle Leather
Standard



Charcoal Black Leather with Carbon Insert
California Special Edition

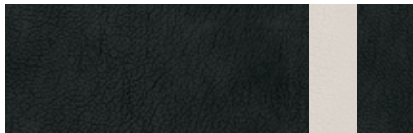
Available Premier Trim With Color Accent Package



Brick Red Leather
with Cashmere-Coloured Racing Stripe



Charcoal Black Leather
with Grabber Blue Racing Stripe



Charcoal Black Leather
with Cashmere-Coloured Racing Stripe



Mustang GT • Charcoal Black Leather Trim • Cashmere-Coloured Racing Stripe
• Premier Trim With Colour-Accent Package • Available Equipment



Mustang GT • Grabber Blue • California Special Edition • Available Equipment

MUSTANG GT BODY STYLES



Coupe



Glass Roof



Convertible

2011 **MUSTANG**

ford.ca



Drive one.

GT OPTIONAL FEATURES

GT Options

- 6-speed automatic transmission with 3.15:1 gear ratio with limited-slip differential
- 3.73:1 gear ratio with limited-slip differential (manual transmission only)
- 19-in. premium painted luster-nickel aluminum wheels including strut tower brace
- Cloth convertible top
- Engine block heater
- Glass roof with retractable shade (coupe only – not available with Stone interior)
- HID headlamps (requires Security Package)
- Over-the-top racing stripes (coupe only) – Not available with glass roof
- Power Code™ Remote Start System (requires automatic transmission)
- Rear view camera
- Shaker™ 1000 Audio System with AM/FM stereo/single-CD player with MP3 capability, 10 speakers and 1000 watts (not available with Next Gen Navigation System Package)
- Soft boot for convertible top
- Spoiler delete

GT Packages

GT California Special Edition includes unique chrome billet-style grille with body-colour surround, unique lower fascia with fog lamps, 19-in. argent-painted machined-aluminum wheels with P245/45R19 tires, GT/CS side stripes, unique decklid badge with name in faux gas cap, unique instrument panel finish, carbon door-panel inserts, leather-trimmed seats with Carbon inserts, premium carpeted front floor mats with embroidered logo, rear lower fascia insert, rear pedestal spoiler, decklid tape appliqué, and side scoops

GT Accessory Package includes hood scoop and pedestal spoiler (requires spoiler delete; not available with Next Gen Navigation System Package)

GT Brake Performance Package includes Shelby GT500™ front and rear brakes, unique AdvanceTrac® ESC (electronic stability control) tuning, unique front corner modules, tire mobility kit, and 19-in. dark stainless painted-aluminum wheels with P255/40R19 tires (manual transmission only)

Next Gen Navigation System Package includes dual-zone electronic automatic temperature control, and nearly 10 gigabytes of digital storage for photos and music

Premier Trim With Colour Accent Package includes Charcoal Black interior environment with colour-accented leather-trimmed seats, unique door trim with bright Pony badge, and dark-aluminum instrument panel appliqué

Security Package includes Active Anti-Theft System and wheel locks

Exterior Colours	Interior Colours	Premium Trim Colours	Top Colours	Stripe Colours
Grabber Blue	● ● ● ●	■ ■	▲	◆ ◇
Performance White	● ● ● ●	■ ■	▲ ▲	◆ ◇
Kona Blue Metallic	● ● ● ●	■ ■	▲ ▲	◆ ◇
Race Red	● ● ● ●	■ ■	▲ ▲	◆ ◇
Red Candy Metallic Tinted Clearcoat ¹	● ● ● ●	■ ■	▲ ▲	◆ ◇
Black	● ● ● ●	■ ■	▲ ▲	◆ ◇
Sterling Gray Metallic	● ● ● ●	■ ■	▲	◆ ◇
Ingot Silver Metallic	● ● ● ●	■ ■	▲	◆

Interiors: ● Stone Leather ● Charcoal Black Leather ● Saddle Leather ● Charcoal Black with Carbon Insert and Satin Black Tape Stripe ■ Brick Red with Cashmere-Coloured Stripe ■ Charcoal Black with Grabber Blue Stripe ■ Charcoal Black with Cashmere-Coloured Stripe ▲ Stone Vinyl Convertible Top ▲ Black Vinyl Convertible Top ◆ Satin Black Tape Stripe ◇ White Tape Stripe

¹Additional charge.



18-in. Wide-Spoke Painted-Aluminum Wheels Standard



19-in. Premium Painted Luster-Nickel Aluminum Wheels Optional



19-in. Argent-Painted Machined-Aluminum Wheels included with California Special Edition



19-in. Dark Stainless Painted-Aluminum Wheels included with GT Brake Performance Package

EXTERIOR



Grabber Blue



Performance White



Kona Blue Metallic



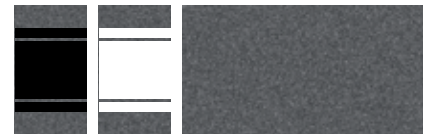
Race Red



Red Candy Metallic Tinted Clearcoat



Black



Sterling Gray Metallic



Ingot Silver Metallic

Colours are representative only. See your Ford of Canada Dealer for actual paint/trim options.

Elements

More tech. Further proof Mustang offers more than muscle.



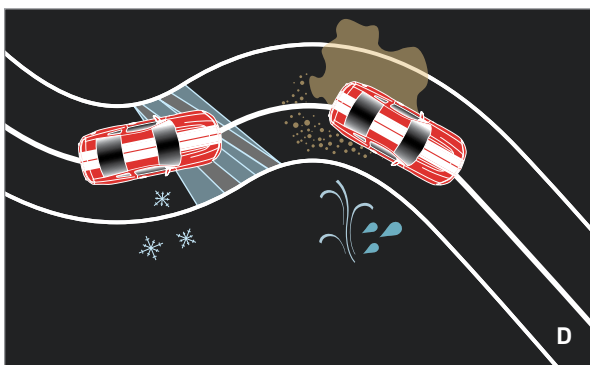
A | HID HEADLAMPS emit approximately 2 1/2 times as much light as conventional versions. A special quartz bulb generates a penetrating, bluish-white light. Available on V6 and GT.



B | EASY FUEL® originated at the race track. Fill-ups are made simpler – no screw-on cap to tighten, loosen or lose. The system self seals to protect against dust, water, snow and ice.



C | BLIND SPOT MIRRORS are built into each sideview mirror. They're convex, reflecting the image of approaching vehicles that enter your blind spots.



D | ADVANCE TRAC® ESC (electronic stability control)¹ helps keep you in control and on track. It works in conjunction with the 4-wheel disc ABS and all-speed traction control.

GT BRAKE PERFORMANCE PACKAGE is available with the high-performance stopping power of 14-in. Brembo™ vented front rotors and Brembo 4-piston calipers. Brembo is a leader for braking systems – be it for street or racing circuit.



¹Remember that even advanced technology cannot overcome the laws of physics. It's always possible to lose control of a vehicle due to inappropriate driver input for the conditions.

2011 MUSTANG

ford.ca



Drive one.

Accessories

Detailed. Tested. Warranted. For enhanced looks. Or enhanced function.



Pedestal Rear Spoiler and Quarter Window Louvers



Side Scoops



Remote Start System



All-Weather Floor Mats



Chrome Billet-Style Grille and Front Lower Fascia



Rear Lower Fascia – Diffuser-Style



20-in. Chrome Wheel¹



18-in. Painted Dark Shadow Gray Wheel



18-in. 5-Spoke Chrome Wheel



19-in. Painted Foundry Black GT Wheel¹

APPEARANCE

- Grilles
- Body Kit by 3dCarbon^{®2}
- Hood Scoops
- Rear Spoilers
- Decklid Panels (V6 or V8)
- Over-the-Top Racing Stripes

ELECTRONICS

- Portable Navigation Systems by Garmin^{®2}
- Vehicle Security System
- Keyless Entry Keypad
- Wiper De-Icer and Debris Cleaner by Wiper Shaker²

EXTERIOR

- Convertible Hard Tonneau Cover²
- Hood Deflector
- Side Window Deflectors
- Splash Guards
- Locking Fuel Plug

INTERIOR

- Soft Cargo Organizers (Large and Standard Sizes)
- Soft Cargo Cooler Bag
- Cargo Area Protector (with and without subwoofers)
- Cargo Net
- Premium Carpeted Floor Mats
- Sport Pedals
- Illuminated Sill Plate
- Interior Light Kit
- Ash Cup/Coin Holder with or without Lighter Element
- Auto-Dimming Rearview Mirror

WHEELS

- Wheel Locks

¹Vehicle application and restrictions apply. See dealer for details. ²Ford Licensed Accessories. Garmin is a registered trademark of Garmin Ltd.



Hood and Side Stripes

Ford of Canada warrants that its authorized Dealers will repair or replace any Genuine Ford Accessory that is properly installed by the authorized Dealer that sold the accessory and found to be defective in factory-supplied materials or workmanship. The accessory will be warranted for whichever provides you the greatest benefit: 12 months/20,000 km (whichever occurs first), or the remainder of your 36-month/60,000-km (whichever occurs first) Basic Coverage in the New Vehicle Limited Warranty. Contact your local Ford of Canada Dealer for details.

Ford Licensed Accessories (FLA) are warranted by the accessory manufacturer's limited warranty. The warranty coverage will vary by accessory manufacturer. Ford Licensed Accessories are fully designed and developed by the accessory manufacturer and have not been designed or tested to Ford Motor Company engineering requirements. Contact your local Ford of Canada Dealer for details regarding the accessory manufacturer's limited warranty and/or for a copy of the FLA product limited warranty offered by the accessory manufacturer.



2011 MUSTANG

ford.ca



Drive one.

Our commitment to you... Peace-of-Mind Protection

- **Basic Coverage:** 3 years/60,000 km
- **Powertrain Limited Warranty:** 5 years/100,000 km
- **Corrosion Warranty:** 5 years/unlimited distance
- **Roadside Assistance:** 5 years/100,000 km

Certain conditions apply. For more information on these warranties and coverages, ask your local Ford of Canada Dealer or visit ford.ca.

Ford Extended Service Plan

Help protect your investment and add to your peace of mind by complementing your vehicle purchase or lease with a Ford Extended Service Plan (ESP). Ford ESP protects you against unexpected repair costs after your New Vehicle Basic Warranty expires by covering many vehicle components. Enjoy the drive even more by complementing your ESP with a prepaid maintenance plan, which covers all required scheduled maintenance for your vehicle, plus 8 wear items. See your Ford of Canada Dealer for details.

Ford Credit

Get the ride you want. Whether you plan to lease or finance, you'll find the choices that are right for you at Ford Credit. Ask your local Ford of Canada Dealer for details or check us out at fordcredit.ca.

For prompt, courteous answers to your questions:

Ford Customer Relationship Centre
1-800-565-3673

Ford Credit Customer Service Centre
1-877-636-7346



Drive smart.

With available features like Ford SYNC,[®] adaptive cruise control,¹ Easy Fuel[®] and MyKey,[™] Ford cars and utility vehicles offer you more innovative and easy-to-use technology than ever before.



Drive green.

Ford offers 30 vehicles that get 8.3L/100 km (34 mpg) highway or better.²



Drive quality.

The ultimate proving ground for Ford's quality commitment is your driving experience. Drive one and you'll feel it.



Drive safe.

Ford has received more NHTSA 5-Star ratings than any other brand... ever.³

¹Adaptive cruise control not available on 2011 Mustang. ²2011 and 2010 model year ratings: 8.3L/100 km highway and 12.7L/100 km city or better on 30 vehicles, based on powertrain and body style. Fuel consumption ratings based on Transport Canada approved test methods. Actual fuel consumption may vary based on road conditions, vehicle loading, vehicle equipment and driving habits. ³Historic brand totals. 2011 model year to be tested. Star ratings are part of the U.S. Department of Transportation's Safercar.gov program (www.safercar.gov).

Please note: The electronic version of the Ford of Canada vehicle brochure is a condensed version of the original printed version.

Competitive comparisons are based on 2010 competitive models, publicly available information and Ford data at the time of printing of the 2011 original printed version. Some features discussed may be optional. Vehicles shown may contain optional equipment. Features shown may be offered only in combination with other options or subject to additional ordering requirements or limitations. Dimensions shown may vary due to optional features and/or production variability. Following publication of the 2011 original printed brochure, certain changes in standard equipment, options and the like, or product delays may have occurred which would not be included in these pages. Your Ford of Canada Dealer is your best source for up-to-date information. Ford Motor Company of Canada, Limited, reserves the right to change product specifications at any time without incurring obligations. Colours may not be exactly as illustrated. Please see your sales consultant for specific colour and model availability. Please visit your local dealer or ford.ca for complete vehicle details

2011 MUSTANG

ford.ca



Drive one.

©2010 Ford Motor Company of Canada, Limited