

2011 Santa Fe



 **HYUNDAI™**

2011 Santa Fe

WHAT SMART MEANS TO US.

At Hyundai, we are constantly striving to make smart decisions when it comes to our vehicles so you can make smart decisions when it comes to your purchase. A smart decision means weighing the pros and cons, evaluating the costs against the benefits, and making a choice for the right reasons for you. It means having no regrets.

Our investment in eco-friendly technologies, quality craftsmanship, extensive research and design, together with our state-of-the-art facilities and dedicated human resources, ensures our vehicles are built with integrity from the first to the final detail. And, together, they deliver on Hyundai's promise to Canadians – to create a lineup of smart vehicles.

STYLE, UTILITY AND AGILITY.

Everyone does something well. The true standouts, though, excel at a number of things. The 2011 Santa Fe is just such a vehicle. With equal parts sophisticated styling, resourceful utility and road-holding agility, the Santa Fe has become the definitive midsize utility vehicle. Instead of making tradeoffs – ride over cargo or looks over space – get it all. For a life on the move, we've got you covered in the 2011 Santa Fe.



exterior



Styled All Around. The 2011 Santa Fe's distinctive face features a body coloured grille with chrome surround, and available fog lights sitting beneath combination wrap-around, jewelled projector-beam headlamps. At back, the rear fascia contains highly visible and stylish combination tail lamps.

Alloys for Everyone. The 2.4L GL Premium, 3.5L GL Sport and Limited models make memorable first impressions with 18" 10-spoke alloy wheels, while the 2.4L GL and 3.5L GL come standard with 17" 5-split-spoke alloys.



A visual idea, brought to life. In a design this pleasing to the eye, there are no extraneous lines or incomplete thoughts. The Santa Fe melds stunning curves with modern accents to strike the perfect balance of contemporary styling and state-of-the-art functionality. An available sunroof and rear spoiler give your Santa Fe added sportiness, and standard roof-rack side rails provide further utility. Standard alloy wheels maximize the Santa Fe's clean good looks, giving it a commanding presence on the road. And with power-adjustable heated exterior mirrors and available fog lights, you can outfit your Santa Fe for even the most unpredictable weather.

interior



Under the Sun or the Night Sky. Things are looking up, thanks to an available power glass sunroof. Improved air circulation, enhanced cabin illumination and a cool view of the sky are yours with the simple touch of a button.

Keep Safe Driving Well in Hand. To maximize convenience and safety, Bluetooth® Handsfree® mobile phone interface is now standard on all Santa Fe models. Combined with the standard steering wheel-mounted cruise and audio controls, your hands can stay safely on the wheel for better control and reaction time.

Sleek, sophisticated and spacious. The Santa Fe's smart design results in generous head, leg and shoulder room. Increased rigidity means a more sedan-like ride and a quieter cabin – perfect for enjoying the 6-speaker, 172W, AM/FM/XM/CD/MP3 audio system, or the acoustic accuracy of the Limited's available 10-speaker, 605W Infinity® system with 6-CD changer. XM® Satellite radio and an auxiliary input jack for MP3 players are standard on all models. The Santa Fe's space-efficient design delivers ample room for people and cargo, and with fold-down second-row seats, you have access to 2,214L of valuable cargo space. The available 8-way power-adjustable driver's seat with power lumbar support proves the Santa Fe's interior is the result of thoughtful design.

performance



Pure, Proficient and Powerful. When it comes to power, your options have never been better. The efficient and powerful 2.4L Theta II I-4 or the available 3.5L Lambda II V6. Both are aluminum-constructed and come with Dual Continuously Variable Valve Timing (CVT), making them fuel-efficient and clean-burning. They also deliver an impressive 175 and 276 horses respectively, for plenty of power when you need it.

Fuel-Saving Eco Indicator. One of the easiest and most effective ways to improve fuel efficiency is to adjust your driving style. The Eco Indicator will show you when you're driving most efficiently, saving you gas and money while benefitting the environment.



Strong performance coupled with sensible efficiency. The Santa Fe is the ready-for-anything CUV. First, there's the 4-cylinder: a spirited yet economical 2.4L inline 4 getting 7.2 L/100km highway and 10.4 L/100km city, with automatic transmission. For V6 fans, the Santa Fe offers the larger, powerful 3.5L V6. It delivers 7.6 L/100km highway and 10.2 L/100km city. The 2.4L also has two transmission options featuring 6 gears for fuel-saving performance – a 6-speed manual or 6-speed automatic with SHIFTRONIC® – while the 3.5L comes standard with the 6-speed automatic transmission. Optional AWD provides assured control even in precarious weather conditions. Santa Fe's confident, agile, sedan-like handling has a refined feel and features direct sub-frame on frame mounting for improved ride quality.



s a f e t y



Backup Camera for Safety. To help you spot children, bikes, and other vehicles, the Limited's available navigation system⁹ features a rear camera with high-resolution LCD screen – making backing up safer and easier.

Airbags¹. Get the added peace of mind provided by the advanced coverage of the Santa Fe's six airbags – dual front airbags, together with driver and passenger seat-mounted side-impact airbags and side-curtain, rollover-sensing, roof-mounted airbags.

Hit the road with peace of mind. The Santa Fe offers a superior level of protection with a comprehensive package of high-tech safety features. Standard on all models are six airbags¹, Electronic Stability Control (ESC) and Traction Control System (TCS)², and front and rear disc brakes featuring an Anti-lock Braking System (ABS) with Electronic Brake Force Distribution and Brake Assist for maximum control. From adjustable head rests and front active and rear autofold head restraints, to LATCH child-seat anchors, child-proof rear door locks and an energy-absorbing steering column, it's clear Hyundai is keeping your safety a priority.



2011 Santa Fe

Stepping into a beautifully-designed
generously-appointed interior,
where form greets function.

Interior may not be exactly as shown.

SMART, AND WHAT IT MEANS TO US.

Every automaker – like every person – has a philosophy that guides their thinking and decisions. Ours is straightforward and pragmatic: to be smart. At Hyundai, we try to make smart moves, every day, so we're not only your next vehicle choice, but also your choice again and again down the road.

Smart is building vehicles that offer exceptional value – not just a great price. We build vehicles that people are happy to drive, with the comfort and safety features they want, and meaningful warranties to back them up.

Smart is the drive to zero defects. In 1999, we embarked on our quality mission when we launched the Zero Defects program. This initiative involves everyone and every aspect of the company's culture in a sincere commitment to quality manufacturing across the board. While we continue to be honoured with awards for excellence, our priority remains our unwavering commitment to our drivers.

Smart is offering sensible prices on vehicles that people are happy to drive. And we want you to be as happy with your vehicle in five or ten years as you are on day one. This means building a quality product, and equipping it with the kinds of features that make driving a joy.





It also means offering a warranty that's meaningful, like a 5-year/100,000 km Comprehensive Limited Warranty,[†] 5-year/100,000 km Powertrain Warranty and 3-year/Unlimited km Roadside Assistance Program^{††}.

Ultimately, smart is taking a leadership role, with the courage to break new ground and chart the course that an entire industry will take. It requires the confidence to guide others, and the conviction to follow through on commitments. Hyundai's commitment to these principles has propelled us to being the world's 4th largest auto manufacturer, servicing 160 countries and selling 30 million vehicles.

As part of our leadership role, we've launched Blue Drive, a collection of environmental initiatives that will help the fight to reduce greenhouse gas emissions. It's one of many steps toward our goal to achieve the most fuel-efficient lineup on the planet by 2015, and just another way we're working to be your first choice in vehicles today, and again down the road.

We believe that if we continue to follow the principles behind what is smart, we'll continue to show Canadians that Hyundai is the right choice today and their best choice for the future.



colours

2011 Santa Fe

Our vivid palette of exterior colours is the perfect way to complete your Santa Fe.
Explore the options and choose the one that best reflects your personal style.

EXTERIOR



A
C
E

Frost White Pearl



A
D
E

Moonstone Silver



B
C
F

Sonoran Red



A
C
E

Granite Blue



A
C
E

Black Noir Pearl



A
D
E

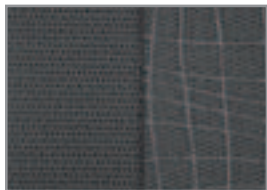
Titanium Silver



B
C
F

Expresso Brown

INTERIOR



Grey Cloth

A



Beige Cloth

B



Cocoa Black Cloth/Leather*

C



Grey Cloth/Leather*

D



Cocoa Black Leather

E



Beige Leather

F

*Available on 3.5L Sport Model only. Choice of interior colour depends upon exterior colour selection. Due to print production processes, the colours shown throughout this brochure may vary slightly from the actual hue. See your dealer for model applications and to view the Hyundai Colour Selector. Visit hyundaicanada.com or see dealer for details.

a c c e s s o r i e s

2011 Santa Fe

Hyundai is making its name by delivering unprecedented quality and value – offering Canadians a wide variety of lifestyle-friendly vehicles loaded with outstanding packages of standard features and premium extras. But your vehicle should be as individual as you. That's why Hyundai goes out of its way to offer you a line of accessories designed to suit specific demands. With Hyundai's line of authorized parts and accessories, you are able to customize and adapt your vehicle to your lifestyle. From a handy trailer hitch kit to stylish side steps and protective rubber floor mats, custom-fit your Santa Fe your way.



Cargo Tray. Add years to the interior of your Hyundai by protecting it from spills and messy loads with a durable, custom-fit cargo tray.



Rubber Floor Mats. Protect the interior of your Hyundai from everyday dirt and debris with custom-made floor mats. Remove carpet mats prior to installation.



Cross Rails. This durable, quick-locking cross rail system lets you transport cargo easily, without sacrificing interior room. Remove when not in use.



Front Bumper Guard. Add style to your vehicle and protect the front bumper with a polished stainless steel bumper guard.



Mud Guard Kit. Custom-fit mud guards keep the dirt and debris of everyday driving where it belongs.



Plastic Hood Protector. Prevent dents and scratches caused by road and vehicle debris with an attractive plastic hood protector.



Running Boards. Getting in and out of your vehicle is easy with a set of durable running boards.



Side Steps. Stylish and functional, polished stainless steel side steps will add a rugged look to your vehicle.



Side Visors. New style side visor, installs easily in the window channel with no unsightly exterior tape. Helps keep the elements out of the vehicles interior including snow and rain.



Trailer Hitch Kit. Designed to meet all your towing needs, a Hyundai hitch can accommodate a wide variety of hitch-mounted accessories. Kit includes: trailer hitch, ball mount and end cap. Chrome ball shown not included.

2011 Santa Fe

2.4L GL Standard Equipment:

2.4L, 175 hp, 16-valve, DOHC, 4-cylinder Theta II Engine with Dual Continuously Variable Valve Timing (CVT)
17-inch Alloy Wheels
4-wheel Disc Brakes
6-speed Manual Transmission
Airbags ¹ : Dual Front Airbags, 2 Seat-mounted Side-impact, 2 Roof-mounted Side Curtains with Rollover Sensor
Air Conditioning with Manual Temperature Controls and 2nd-row Ventilation Ducts
AM/FM/XM/CD/MP3 6-Speaker Audio System with 3-month Trial Subscription
Anti-lock Braking System (ABS) with Electronic Brake Force Distribution (EBD) and Brake Assist (BA)
Bluetooth [®] Handsfree [®] Phone System
Centre Console Armrest with Storage and Dual Cupholders
Cruise Control
Driver's and Front Passenger's Vanity Mirrors with Extensions
ECO Indicator (A/T)
Electronic Stability Control (ESC) with Traction Control System (TCS) ²
Four 12-volt Outlets
iPod/USB and Aux. Audio Input Plug
Map Lights
Power Windows with Driver's Auto Up/Down
Remote Keyless Entry with Alarm
Roof-rack Side Rails
Front, Multi-adjustable Bucket Seats with Active Head Restraints and Driver's Manual Lumbar Support
2nd-row, 60/40 Split Fold-flat with Height-Adjustable Head Restraints
Steering Wheel-mounted Audio Controls
Tilt-and-telescoping Steering Wheel
Windshield Wiper De-icer
Woodgrain Interior Accents
Optional: 6-speed Automatic Transmission with SHIFTRONIC [®]

2.4L GL PREMIUM Includes 2.4L GL Standard Equipment Plus:

6-speed automatic transmission with SHIFTRONIC [®]
18-inch alloy wheels
Fog lights
Heated Front Seats
Sunroof - Power Tilt-and-slide One-touch Open
Trip Computer
Optional: On Demand All-wheel Drive System

3.5L GL Includes 2.4L GL Standard Equipment Plus:

3.5L, 276 hp, 24-valve, DOHC, 6-cylinder Lambda II Engine with Dual Continuously Variable Valve Timing (CVT)
6-speed Automatic Transmission with SHIFTRONIC [®]
Fog Lights
Illuminated Sunvisor
Heated Front Seats
Trip Computer
Towing Prep Package

3.5L GL SPORT Includes 3.5L GL Equipment Plus:

18-inch Alloy Wheels
Leather-wrapped Steering Wheel and Gear Shift Knob
Power Glass Sunroof with One-touch Open
Rear Spoiler
Cloth Seats with Leather Bolster
Driver's 8-way Power-adjustable Seat with Power-adjustable Lumbar Support
Electro-chromic Auto-dimming Rearview Mirror with Compass
Optional: On Demand All-wheel Drive System

3.5L Limited Includes 3.5L Sport Equipment Plus:

Air Conditioning with Dual-zone Automatic Temperature Controls and CleanAir Ionizer
All-wheel Drive
Automatic Light Control
Body Colour Door and Rear Liftgate Handles with Chrome Inserts
Cargo Area 115-Volt Outlet
Deluxe Door Sill Scuff Plate - Metal Grain with Santa Fe Imprint
Electro-chromic Auto-dimming Rearview Mirror with HomeLink [®] Transceiver and Compass
Infinity [®] Logic 7 [®] AM/FM/XM/6-CD Changer/MP3 10-speaker Audio System with 3-month Trial Subscription
4-way Power-adjustable Passenger Seat
Leather Seats

3.5L Limited With Nav Includes 3.5L Limited Equipment Plus:

Premium AM/FM/XM/CD/MP3 Audio System with Subwoofer and Amplifier
High-resolution Touch-screen Navigation System [⊙]
Rearview Camera

Mechanical

Engine Type	16-valve, DOHC, I4 with Dual Continuously Variable Valve Timing (CVT)	2.4L GL	2.4L GL PREMIUM	3.5L GL	3.5L GL SPORT	3.5L LIMITED	3.5L LIMITED With Nav
	24-valve, DOHC, V6 with Dual Continuously Variable Valve Timing (CVT)	-	-	S	S	S	S
Displacement	2.4L (2,359cc)	S	S	-	-	-	-
	3.5L (3,470cc)	-	-	S	S	S	S
Bore & Stroke (mm)	88 mm x 97 mm	S	S	-	-	-	-
	92 mm x 87 mm	-	-	S	S	S	S
Compression Ratio	10.5:1	S	S	-	-	-	-
	10.6:1	-	-	S	S	S	S
Horsepower @ RPM	175 @ 6,000 RPM	S	S	-	-	-	-
	276 @ 6,300 RPM	-	-	S	S	S	S
Torque (lb-ft) @ RPM	169 lb ft @ 3,750 RPM	S	S	-	-	-	-
	248 lb ft @ 5,000 RPM	-	-	S	S	S	S
Exhaust	Two side-by-side	S	S	S	S	S	S
Variable Intake System (VIS)		S	S	S	S	S	S
Maximum Towing Capacity (kg)	with Trailer Brake: 907	S	S	-	-	-	-
	1,587	-	-	S	S	S	S
	without Trailer Brake: 749	S	S	S	S	S	S
Transmission Type	6-Speed Manual	S	-	-	-	-	-
	6-Speed Automatic w/ OD lock-up torque converter SHIFTRONIC [®] (A/T only)	0	S	S	S	S	S
		0	S	S	S	S	S
Drive Configuration	FWD	S	S	S	-	-	-
	AWD	-	0	0	0	0	S
Brakes	Front: Ventilated Disc, Single Piston	S	S	S	S	S	S
	Rear: Solid Disc, Single Piston	S	S	S	S	S	S
	ABS with Electronic Brake Force Distribution (EBD) and Brake Assist (BA)	S	S	S	S	S	S
Battery	54 AH	S	S	S	S	S	S
Alternator	13.5V/110A	S	S	-	-	-	-
	13.5V/150A	-	-	S	S	S	S
Ignition	Electronic/Distributorless	S	S	S	S	S	S
Frame Construction	Unitized Body	S	S	S	S	S	S
Suspension	Front: Twin-tube Gas-filled MacPherson Struts with Stabilizer Bar	S	S	S	S	S	S
	Rear: Multi-link with Stabilizer Bar and Gas Shock Absorbers	S	S	S	S	S	S
Tires	P235/65R17	S	-	S	-	-	-
	P235/60R18	-	S	-	S	S	S
Wheels (Aluminum Alloy)	17" x 7"	S	-	S	-	-	-
	18" x 7"	-	S	-	S	S	S

Dimensions

	Exterior (mm)	Interior (mm)	1st Row	2nd Row
Wheelbase	2,700	Head Room	1,021	1,005
Length	4,676	Leg Room	1,082	934
Height	1,725	Hip Room	1,417	1,397
Width	1,890	Shoulder Room	1,511	1,488
Tread Width (Front/Rear):	1,615/1,620			
Turning Diameter (m)	10.79			
Turns, Lock-to-lock	3.02			

Fuel Economy

Fuel Consumption Estimates (L/100 km) [*]	City/Highway	City/Highway
2.4L 6-Speed Manual Transmission (FWD)	11.0/7.7	
2.4L 6-Speed Automatic Transmission (FWD/AWD)	10.4/7.2	10.6/8.0
3.5L 6-Speed Automatic Transmission (FWD/AWD)	10.2/7.6	10.6/7.7

		2.4L GL	2.4L GL PREMIUM	3.5L GL	3.5L GL SPORT	3.5L GL LIMITED	3.5L GL LIMITED With NAV
Fuel Tank	Capacity (L)						
	68	S	S	S	S	S	S
Interior							
Air Conditioning	Manual Temperature Control	S	S	S	S	-	-
	Dual-zone Automatic Temperature Controls with CleanAir Ionizer	-	-	-	-	S	S
	2nd-row HVAC Vents (B Pillar-mounted)	S	S	S	S	S	S
Audio Systems	AM/FM/XM/CD/MP3 with six Speakers and 172-watt Maximum Internal Amplifier	S	S	S	S	-	-
	Infinity® Logic 7® AM/FM/XM/6-CD Changer/MP3 10-speaker Audio System with 11-channel, 605-watt Infinity® External Amplifier	-	-	-	-	S	-
	Premium AM/FM/XM/CD/MP3 with Subwoofer and Amplifier Navigation System ^o with 6.5" High-resolution Screen iPod/USB and Aux. Input Plug	-	-	-	-	-	S
Bluetooth® Handsfree ^o Phone System		S	S	S	S	S	S
Console	Centre Armrest with Storage and Illuminated Cupholders	S	S	S	S	S	S
Cruise Control	Steering Wheel-mounted	S	S	S	S	S	S
Cupholders	Front Centre Console (2), Rear Centre Armrest (2), Doors (4)	S	S	S	S	S	S
DC Power Outlet	(12V) Centre Stack-mounted (2), Rear of Centre Console (1), Rear Cargo Area (1)	S	S	S	S	S	S
Door Trim	Cloth with Map Pocket	S	S	S	S	-	-
	Simulated Leather with Map Pocket	-	-	-	-	S	S
Gauges	Speedometer, Temperature, Fuel, Tachometer, Odometer, Trip Odometer	S	S	S	S	S	S
Illumination	Map Lights, Central Dome with Delay, Glove Box, Hazard Ignition Key Cylinder Surround	S	S	S	S	S	S
Mirrors	Rearview, Manual Day/Night	S	S	S	-	-	-
	Electro-chromic Auto-dimming Mirror with Compass	-	-	-	S	S	S
	Integrated HomeLink® Transceiver	-	-	-	-	S	S
Power Door Locks	Auto-locking Feature Enabled by Dealer	S	S	S	S	S	S
Power Windows	With Driver's Auto Up/Down	S	S	S	S	S	S
Scuff Plates	Door Sill, Deluxe (Metal Grain*)	S	S	S	S	S	S
Seats (Front)	Multi-adjustable Bucket Seats	S	S	S	S	S	S
	Driver's Seat Manual-adjustable with Lumbar Support	S	S	-	-	-	-
	Driver's Seat 8-way Power-adjustable with Lumbar Support	-	-	-	S	S	S
	Front Passenger 4-way Power-adjustable	-	-	-	-	S	S
	Heated Front Seats	-	S	S	S	S	S
Seats (2nd Row)	60/40 Split Bench	S	S	S	S	S	S
Seat Trim	Cloth	S	S	-	-	-	-
	Cloth with Leather Bolster	-	-	-	S	-	-
	Leather	-	-	-	-	S	S
Steering Wheel	Tilting	S	S	S	S	S	S
	Telescoping	S	S	S	S	S	S
	Leather-wrapped	-	-	-	S	S	S
	Steering Wheel-mounted Audio Controls	S	S	S	S	S	S
Trip Computer		-	S	S	S	S	S

		2.4L GL	2.4L GL PREMIUM	3.5L GL	3.5L GL SPORT	3.5L GL LIMITED	3.5L GL LIMITED With NAV
Exterior							
Antenna	Micro, Roof-mounted	S	S	S	S	S	S
Body Side Moulding	Embossed Black	S	S	S	S	S	S
Bumpers (Front/Rear)	Body Colour	S	S	S	S	S	S
Defroster	Rear Window, Electronic with Timer	S	S	S	S	S	S
Fog Lights	Front	-	S	-	S	S	S
Glass	Tinted	S	S	S	S	S	S
	Rear Windows, Privacy	S	S	S	S	S	S
Handles	Door and Liftgate, Body Colour	S	S	S	S	-	-
	Door and Liftgate, Body Colour with Chrome Inserts	-	-	-	-	S	S
Headlights	Projector-beam	S	S	S	S	S	S
	Auto Light Control	-	-	-	-	S	S
Mirrors	Body Colour, Power-adjustable, Heated with Timer	S	S	S	S	S	S
Rear Spoiler		-	-	-	S	S	S
Roof-rack Side Rails		S	S	S	S	S	S
Sunroof	Power Tilt-and-slide One-touch Open	-	S	-	S	S	S
Wiper De-icer	Front Windshield	S	S	S	S	S	S
Safety							
Active Head Restraints	Front	S	S	S	S	S	S
Airbags ¹	Dual Front	S	S	S	S	S	S
	Front Seat-mounted Side-impact	S	S	S	S	S	S
	Roof-mounted Side-curtain Airbags with Roll-over Sensor	S	S	S	S	S	S
Alarm System	Anti-theft System Integrated with Remote Keyless Entry	S	S	S	S	S	S
Brakes	Anti-lock Braking System (ABS) with Electronic Brake Force Distribution (EBD) and Brake Assist (BA)	S	S	S	S	S	S
Child Safety	Child-proof Rear Door Locks	S	S	S	S	S	S
	Child-seat LATCH System	S	S	S	S	S	S
Crumple Zones	Front and Rear	S	S	S	S	S	S
Door Locks	Remote Keyless Entry with Alarm	S	S	S	S	S	S
Electronic Stability Control (ESC) with Traction Control System (TCS) ²		S	S	S	S	S	S
Ignition Immobilization System ^{**}		S	S	S	S	S	S
Power Window Lock-out Button		S	S	S	S	S	S
Rearview Camera		-	-	-	-	-	S
Restraint Systems	Front: Adjustable Shoulder Belt Height, Seatbelt Pretensioners, Force Limiters	S	S	S	S	S	S
	2nd Row: 3-point Seatbelts (all positions)	S	S	S	S	S	S
Steering Column	Energy-absorbing	S	S	S	S	S	S
Standard Warranty							
Coverage	One of Canada's best warranties						
	5-year/100,000 km Comprehensive Limited Warranty ¹	S	S	S	S	S	S
	5-year/100,000 km Powertrain Warranty	S	S	S	S	S	S
	3-year/Unlimited km Roadside Assistance Program ^{1†}	S	S	S	S	S	S

S = Standard D = Dealer Installed Option O = Optional - = Not Available

Specifications, features, illustrations, accessories, materials and equipment and all other information shown in this brochure are based on the latest information available at the time of publication. Although descriptions are believed to be correct, accuracy cannot be guaranteed. Hyundai Auto Canada Corp. reserves the right to make any changes or modifications at any time, without notice or obligation, including, without limitation, in colour, specifications, features, accessories, materials, equipment and models. Some vehicles are shown with optional equipment. All Hyundai warranties have no deductible. ¹Fuel economy figures are based on manufacturer's testing and are used for comparison purposes only. Actual fuel efficiency may vary based on driving conditions and the addition of certain vehicle accessories. ²Hyundai's Comprehensive Limited Warranty coverage covers most vehicle components against defects in workmanship under normal use and maintenance conditions. ³Includes fuel delivery service, flat tire changing, lock-out service, towing service and more. Just one toll-free call away, 24 hours a day. ⁴The Supplemental Restraint (Airbag) System (SRS) is designed to work with the 3-point seatbelt system. The SRS deploys in certain frontal and/or side-impact conditions where significant injury is likely. The SRS is not a substitute for seatbelts, which must still be worn at all times. Children under the age of 13 should be securely restrained in the rear seat. NEVER place a child-seat in the front seat of a Hyundai vehicle. ⁵Electronic Stability Control (ESC) and Traction Control System (TCS) are meant to enhance conscientious driving habits and are not a substitute for safe driving practices. ⁶CAN/JULC S338-98 compliant immobilizer may reduce insurance costs in some instances. The Hyundai names, logo, product names, feature names, images and slogans are trade marks owned by Hyundai Auto Canada Corp. ⁷When equipped with optional navigation package, Bluetooth® Handsfree and the navigation system only recognize English voice commands. iPod is a registered trademark of Apple, Inc. The XM® name and logos are registered trademarks of XM Satellite Radio Inc. and any use of such marks by Hyundai is under license. iPod cable sold separately.

SMART.

Everything we do at Hyundai is with smart in mind. Whether it's designing cars to fit your changing lifestyle, or building cars awarded for being some of the most stylish, reliable, dependable, and efficient on the road today – it all comes back to smart.

At Hyundai, we know it's not just what we build, but how we build it. That means never cutting corners, and demanding only the highest quality not just for you, but also for our planet. Because in the end, it all comes to down helping you live smart.

hyundaicanada.com

