




facebook.com/chevroletcanada


twitter.com/chevroletcanada


youtube.com/chevroletcanada


TRUCK
 OWNER NETWORK
Chevyton.ca


 MIX
 Paper from
 responsible sources
 FSC® C021338

CHEVROLET.CA

190-12-B-015E


 DRIVING OUR WORLD FORWARD

THE BOWTIE MEANS BUSINESS.

Why are Chevrolet trucks such a popular choice for business? Is it their capability? Rock-solid durability? Is it because Chevrolet incorporates an array of advanced technologies to make your truck an even more effective partner for your business by increasing everything from fuel efficiency to driver control? Is it the sheer scale of choice offered across the

lineup, enabling you to match a truck to your workload? Is it the backing of the best coverage in Canada? Sure, all of these factors play a role – and for very good reason, since they enhance the ability of a truck to play the role you demand of it. But in reality, you can boil it all down to one inescapable fact: Chevrolet knows business. It knows that as

much as you ask of your truck, you need it to perform to its utmost, not only reliably, but cost-effectively. Chevrolet trucks are continually revised and improved to deliver even more of the qualities and characteristics that you've grown to trust over the years. The right choice for your business: year in and year out – Chevrolet trucks. They mean business.



Left: Colorado Regular Cab, shown in Summit White with equipment from an independent supplier.
Centre: Silverado 3500HD Crew Cab Long Box LT 4x4 with dual rear wheels, shown in Silver Ice Metallic with available equipment.
Right: Silverado 1500 Extended Cab Standard Box LT 4x4, shown in Silver Ice Metallic with available equipment.

THE RIGHT TRUCK? IT'S ALL A MATTER OF CHOICE.

What is your “right truck”? It's all a matter of lining up the exact specifications of your business application and finding the right blend of features and attributes to answer those demands. That comes down to something as fundamental as horsepower ratings or hauling capacities – it comes down to choice. Does a truck manufacturer build into its lineup all the permutations needed to give you real choice? Take a look at this Model Selector chart and you'll see for yourself how Chevrolet fares on this score. With a range of engines, from a fuel-efficient Vortec™ 2.9L I-4 through to the Duramax® 6.6L Turbo Diesel that generates a phenomenal amount of torque. There's a variety of cab sizes and configurations.

The same is true with the pickup boxes. And if a van is what you need, Chevrolet offers such exclusive available features as All-Wheel Drive (AWD) and a driver's-side cargo door.

On top of that there's a full complement of trim levels and options that address your needs for enhanced comfort, connectivity features and entertainment technology. So make the most informed decision when selecting your next truck. Draw up your list of specifications – then determine which Chevrolet truck best answers your combination of requirements. Not just great trucks – the right truck for your business.

2012 CHEVROLET TRUCKS MODEL SELECTOR

	Drive (Series Code)	Wheelbase mm (in.)	Standard Engine	Optional Engine	GVWR ¹ Max. kg (lb.)	Payload ² Maximum kg (lb.)	Cargo Box Length (nominal ft.) or Van Capacity (L/cu. ft.)	Standard/Optional Seating
SILVERADO FULL-SIZE PICKUP (Regular, Extended & Crew Cab) 1500 Series	2WD (C) 4x4 (K)	3023 (119.0) Reg. Cab 3378 (133.0) Reg. Cab 3645 (143.5) Ext. and Crew Cab 4000 (157.5) Ext. Cab	Varies by model and series. Refer to page 6 for applications	Varies by model and series. Refer to page 6 for applications	1500 Reg. Cab – 2900 (6400) / 3084 (6800) 1500 Ext. Cab – 3084 (6800) / 3175 (7000) / 3175 (7000) ³ / 3266 (7200) ³ 1500 Crew Cab – 3084 (6800) / 3175 (7000) / 3220 (7100) ³ / 3311 (7300) ³	C1500 880 (1940) K1500 829 (1827) C1500 879 (1937) ³ K1500 857 (1890) ³	Reg. Cab – 6'6"/8' Ext. Cab – 6'6"/8' Crew Cab – 5'8"	Reg. 3 Ext. 6/5 Crew 6/5
SILVERADO FULL-SIZE PICKUP (Regular, Extended & Crew Cab) 2500HD Series	2WD (C) 4x4 (K)	3396 (133.7) Reg. Cab 3663 (144.2) Ext. Cab 4018 (158.2) Ext. Cab 3904 (153.7) Crew Cab 4260 (167.7) Crew Cab	Vortec™ 6.0L V8	Duramax® 6.6L V8 Turbo Diesel	Most 2500HD gas models 4309 (9500) 2500HD diesel models 4490 (9900) / 4536 (10,000) Refer to page 8 for details	C2500HD 1910 (4212) K2500HD 1605 (3538)	6'6"/8'	Reg. 3 Ext. 6/5 Crew 6/5
SILVERADO FULL-SIZE PICKUP (Regular, Extended & Crew Cab) 3500HD Series	2WD (C) 4x4 (K)	3396 (133.7) Reg. Cab 4018 (158.2) Ext. Cab 3904 (153.7) Crew Cab 4260 (167.7) Crew Cab	Vortec™ 6.0L V8	Duramax® 6.6L V8 Turbo Diesel	3500HD ⁴ – 5262 (11,600) 3500HD ⁵ – 6090 (13,400) Refer to page 8 for details	C3500HD ⁴ 2096 (4622) K3500HD ⁴ 2091 (4609) C3500HD ⁵ 3273 (7215) K3500HD ⁵ 2857 (6299)	6'6"/8'	Reg. 3 Ext. 6/5 Crew 6/5
SILVERADO BOX DELETE CHASSIS CAB (Regular, Extended & Crew Cab) 2500HD and 3500HD Series	2WD (C) 4x4 (K)	3396 (133.7) Reg. Cab 4018 (158.2) Ext. Cab 4260 (167.7) Crew Cab	Vortec™ 6.0L V8	Duramax® 6.6L V8 Turbo Diesel	Most 2500HD gas models 4309 (9500) 2500HD diesel models 4490 (9900) / 4536 (10,000) 3500HD ⁴ – 5262 (11,600) 3500HD ⁵ – 5897 (13,000)	C2500HD 2177 (4799) K2500HD 1871 (4125) C3500HD ⁴ 2363 (5209) K3500HD ⁴ 2357 (5196) C3500HD ⁵ 3538 (7799) K3500HD ⁵ 3123 (6886)	–	Reg. 3 Ext. 6/5 Crew 6/5
SILVERADO CHASSIS CAB (Regular Cab & Crew Cab) 3500HD Series	2WD (C) 4x4 (K)	3492 (137.5) Reg. Cab 4115 (162.0) Reg. Cab 4356 (171.5) Crew Cab	Vortec™ 6.0L V8	Duramax® 6.6L V8 Turbo Diesel	3500HD ⁵ 2WD – 5988 (13,200) 3500HD ⁵ 4x4 – 5988 (13,200)	C3500HD 3419 (7538) K3500HD 3205 (7066)	–	Reg. 3 Crew 6/5
COLORADO MID-SIZE PICKUP (Regular, Extended & Crew Cab)	2WD (S) 4x4 (T)	2827 (111.3) Reg. Cab 3200 (126.0) Ext. and Crew Cab	Vortec™ 2.9L I-4	Vortec™ 3.7L I-5 Vortec™ 5.3L V8	Reg. Cab 2WD – 2200 (4850) Reg. Cab 4x4 – 2336 (5150) Ext. Cab – 2495 (5500) Crew Cab – 2495 (5500)	(S) 648 (1429) (T) 640 (1410)	Reg. and Ext. Cab – 6' Crew Cab – 5'	Reg. 3/2 Ext. 5/4/3 Crew 5/6
COLORADO MID-SIZE CHASSIS CAB (Regular Cab)	2WD (S) 4x4 (T)	3200 (126.0)	Vortec™ 3.7L I-5	–	2495 (5500)	(S) 988 (2179) (T) 889 (1982)	–	3
EXPRESS FULL-SIZE CARGO VAN (Regular & Extended)	2WD (G) AWD (H)	3429 (135.0) RWB ⁶ 3937 (155.0) LWB ⁶	1500 2WD – Vortec™ 4.3L V6 1500 AWD – Vortec™ 5.3L V8 2500 2WD – Vortec™ 4.8L V8 3500 2WD – Vortec™ 4.8L V8	1500 2WD – Vortec™ 5.3L V8 2500 2WD – Vortec™ 6.0L V8, Duramax® 6.6L V8 Turbo Diesel 3500 2WD – Vortec™ 6.0L V8, Duramax® 6.6L V8 Turbo Diesel	1500 2WD 3311 (7300) 1500 AWD 3311 (7300) 2500 2WD 3901 (8600) 3500 2WD 4355 (9600)	1500 RWB ⁶ 1058 (2332) 1500 RWB ⁶ AWD 683 (1505) 2500 RWB ⁶ 1478 (3259) 2500 LWB ⁶ 1381 (3045) 3500 RWB ⁶ 1920 (4344) 3500 LWB ⁶ 1807 (3983)	RWB ⁶ 7658 (270.4) LWB ⁶ 8890 (313.9)	2/1
EXPRESS FULL-SIZE PASSENGER VAN (Regular & Extended)	2WD (G) AWD (H)	3429 (135.0) RWB ⁶ 3937 (155.0) LWB ⁶	1500 2WD – Vortec™ 5.3L V8 1500 AWD – Vortec™ 5.3L V8 2500 2WD – Vortec™ 4.8L V8 3500 2WD – Vortec™ 4.8L V8	2500 2WD – Vortec™ 6.0L V8 3500 2WD – Vortec™ 6.0L V8, Duramax® 6.6L V8 Turbo Diesel	1500 2WD 3311 (7300) 1500 AWD 3311 (7300) 2500 2WD 3900 (8600) 3500 2WD 4355 (9600) 3500 LWB ⁶ with 6.6L Diesel – 4490 (9900)	1500 RWB ⁶ 728 (1606) 1500 RWB ⁶ AWD 695 (1532) 2500 RWB ⁶ 1214 (2677) 3500 RWB ⁶ 1571 (3463) 3500 LWB ⁶ 1426 (3144)	RWB ⁶ 6123 (216.2) ⁷ LWB ⁶ 7159 (252.8) ⁷	1500 RWB ⁶ 8 2500 RWB ⁶ 12 3500 RWB ⁶ 12 3500 LWB ⁶ 12/15
EXPRESS CUTAWAY 3500 Series	2WD (G)	3530 (139.0) SWB ⁶ 4039 (159.0) RWB ⁶ 4496 (177.0) LWB ⁶	SWB/RWB ⁶ – Vortec™ 4.8L V8 LWB ⁶ – Vortec™ 6.0L V8	SWB/RWB ⁶ – Vortec™ 6.0L V8 All – Duramax® 6.6L V8 Turbo Diesel	5579 (12,300) ⁵	3271 (7212)	–	2/1
EXPRESS CUTAWAY 4500 Series	2WD (G)	4039 (159.0) RWB ⁶	RWB ⁶ – Vortec™ 6.0L V8	Duramax® 6.6L V8 Turbo Diesel	6441 (14,200) ⁵	4140 (9128)	–	2/1

¹ – Gross Vehicle Weight Rating includes vehicle with body, passengers, equipment and cargo. Higher GVWRs may require optional equipment.

² – Maximum payload capacity includes weight of the driver, passengers, optional equipment and cargo and are approximate. Ask your sales consultant or independent equipment supplier for details.

³ – With MAX Trailering Package (NHT).
⁴ – SRW: Single Rear Wheel model.
⁵ – DRW: Dual Rear Wheel model.

⁶ – Short Wheelbase – SWB. Regular Wheelbase – RWB. Long Wheelbase – LWB.
⁷ – With all rear seats removed.

Note: Not all engines indicated for each truck type are available for every model. Ask your sales consultant for details.

A MODEL OF EFFICIENCY.

Working hard is only Part A. There's no question that the first thing you look for in a pickup is capability. Power and hauling capacities remain the barometer for full-size pickup effectiveness. And in these categories, Silverado 1500 excels. For maximum power, there's a 403 horsepower Vortec™ 6.2L High Output V8. For maximum towing capacity, specify the available MAX Trailering Package and tow up to 4853 kg (10,700 lb.). Need to load up the pickup box? Payload capacities go up to 880 kg (1940 lb.). But in today's world of high gas prices, there's a necessary Part B to the equation – and that's fuel efficiency. Perhaps no other factor affects your operating costs so dramatically.

And here Silverado leaves every other V8-powered full-size pickup behind in both highway and city fuel consumption ratings.* That's thanks to fuel-saving Active Fuel Management® and Variable Valve Timing (VVT) engine management technologies, in addition to a six-speed automatic transmission with two overdrive gears. Add to that Silverado's long-term record of dependability. Silverado – as efficient as it is capable.

*2012 Chevrolet Silverado with available Vortec™ 5.3L V8 engine and 6-speed automatic transmission based on GM testing in accordance with approved Transport Canada test methods. Competitive fuel consumption ratings based on Ward's 2011 Large Pickup segment and Natural Resources Canada's 2011 Fuel Consumption Guide. Your actual fuel consumption may vary. Excludes hybrids and other GM models.



Silverado Extended Cab Standard Box LT 4x4, shown in Blue Granite Metallic with available equipment.

STANDARD AND OPTIONAL ENGINES

ENGINES	Vortec™ 4.3L V6	Vortec™ 4.8L V8	Vortec™ 5.3L V8	Vortec™ 6.2L V8
HP @ RPM	195 @ 4600	302 @ 5600	326 @ 5300	403 @ 5700
Torque (lb.-ft.) @ RPM	260 @ 2800	305 @ 4600	348 @ 4400	417 @ 4300

Model	GVWR* Max. kg (lb.)				
1500 SERIES (1/2 TON)					
Reg. Cab standard box 2WD	2900 (6400)	S	0	0	–
Reg. Cab standard box 4x4	2900 (6400)	S	0	0	–
Reg. Cab long box 2WD	2900 (6400)	S	0	0	–
Reg. Cab long box 4x4	3084 (6800)	S	0	0	–
Ext. Cab standard box 2WD	3084 (6800)**	S	0	0	0
Ext. Cab standard box 4x4	3175 (7000)†	–	S	0	0
Ext. Cab long box 2WD	3130 (6900)	–	–	S	–
Ext. Cab long box 4x4	3175 (7000)	–	–	S	–
Crew Cab short box 2WD	3084 (6800)††	–	S	0	0
Crew Cab short box 4x4	3175 (7000)†	–	S	0	0

S – Standard. O – Optional.
 Note: 4-speed automatic transmission with Tow/Haul mode and overdrive is standard with the 4.3L V6 and 4.8L V8. The 6-speed automatic transmission is standard with the Vortec™ 5.3L and 6.2L V8s. All Vortec™ 5.3L V8 engines feature Active Fuel Management® for optimizing fuel efficiency. The Vortec™ 4.8L V8, 5.3L V8 and the 6.2L V8 engines all feature Variable Valve Timing (VVT) and are capable of running on unleaded or up to 85% ethanol (E85) fuels.
 * Gross Vehicle Weight Rating includes vehicle, passengers, equipment and cargo.
 ** 3175 (7000) with MAX Trailering Package – NHT.
 † 3266 (7200) with MAX Trailering Package – NHT.
 †† 3220 (7100) with MAX Trailering Package – NHT.
 ‡ 3311 (7300) with MAX Trailering Package – NHT.

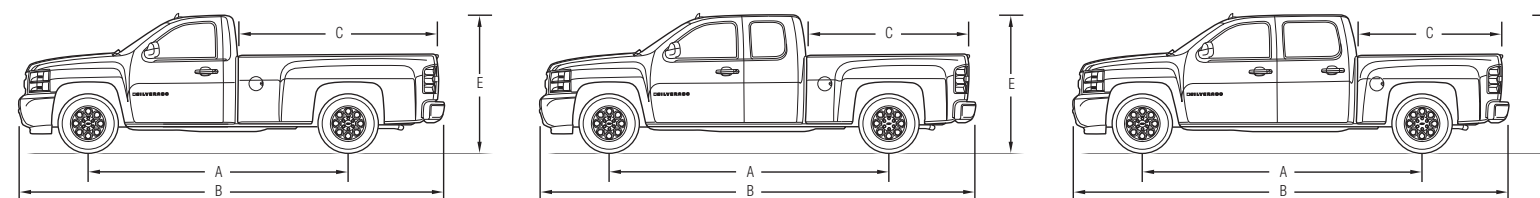
2012 SILVERADO 1500 PICKUP SPECIFICATIONS

SERIES	1500
GVWR¹ Range kg (lb.) – C-Series – 2WD – K-Series – 4x4	2900 (6400) / 3130 (6900) – with MAX Trailering Package 3220 (7100) 2900 (6400) / 3175 (7000) – with MAX Trailering Package 3311 (7300)
Payload Maximum² kg (lb.) – C-Series – 2WD – K-Series – 4x4	880 (1940) – with MAX Trailering Package 879 (1937) 829 (1827) – with MAX Trailering Package 857 (1890)
ENGINE/TRANSMISSION AVAILABILITY See Chart at left for availability	
CHASSIS FEATURES	
Battery – 600 CCA	S
Brakes – Power hydraulic, front disc/rear drum ³ – 4-wheel anti-lock braking system (ABS) – Dynamic Rear Proportioning (DRP)	Vacuum-Boost S S
Frame – 3-piece modular design with hydroformed front section, fully boxed mid section	S
Fuel Tank – Short and Standard box models 98 L (21.6 imp. gal.) – Long box models 129 L (28.3 imp. gal.)	S S
Alternator – 145 amp (160 amp with Snow Plow Prep Package)	S
Steering – Power, rack-and-pinion	S
Front Suspension – Independent, short/long arm type with stabilizer bar – Coil-over-shock design – GAWR Range ⁴ kg (lb.) – 2WD – GAWR ⁴ kg (lb.) – 4x4	S S 1452 (3200) / 1678 (3700) 1792 (3950)
Rear Suspension – 2-stage multi-leaf rear springs – Locking rear differential, automatic (std. on LTZ models) – GAWR ⁴ Range kg (lb.) – 2WD – GAWR ⁴ Range kg (lb.) – 4x4	S 0 1700 (3750) / 1792 (3950) – 1905 (4200) with MAX Trailering Package 1700 (3750) / 1792 (3950) – 1905 (4200) with MAX Trailering Package
Transfer case – 2-speed, part-time, lever-operated – (4x4 WT models) – Autotrac™, 2-speed electronic controls – (4x4 LT and LTZ models)	S S
Wheels – Standard – Optional, standard on LTZ – Optional on LT and LTZ	17" x 7.5", 6-bolt 18" x 8", 6-bolt 20" x 8.5", 6-bolt
Tires – Standard – 2WD – Standard – 4x4 – Standard with LTZ trim – 2WD – Standard with LTZ trim – 4x4 – Optional – Optional	P245/70R17 P265/70R17 P265/65R18 P265/65R18 P275/55R20 LT245/70R17

S – Standard. O – Optional. 1 – Gross Vehicle Weight Rating includes vehicle, passengers, equipment and cargo. 2 – Maximum payload capacity includes weight of the driver, passengers, optional equipment and cargo and are approximate. 3 – 4-wheel disc brakes are included with Vortec™ 6.2L V8 engine and MAX Trailering Package. 4 – Gross Axle Weight Rating is the maximum load carrying capacity of the total axle and suspension system (tires, wheels, springs, axle housing, bearings, etc.).

DIMENSIONS, mm (in.)

Model	A Wheelbase	B Vehicle Length	C Inside Box Length at Floor	D Max. Width
1500 Regular Cab standard box	3023 (119.0)	5222 (205.6)	1999 (78.7)	2029 (79.9)
1500 Regular Cab long box	3378 (133.0)	5702 (224.5)	2484 (97.8)	2029 (79.9)
1500 Extended Cab standard box	3645 (143.5)	5847 (230.2)	1999 (78.7)	2029 (79.9)
1500 Extended Cab long box	4000 (157.5)	6330 (249.2)	2484 (97.8)	2029 (79.9)
1500 Crew Cab short box	3645 (143.5)	5847 (230.2)	1760 (69.3)	2032 (80.0)

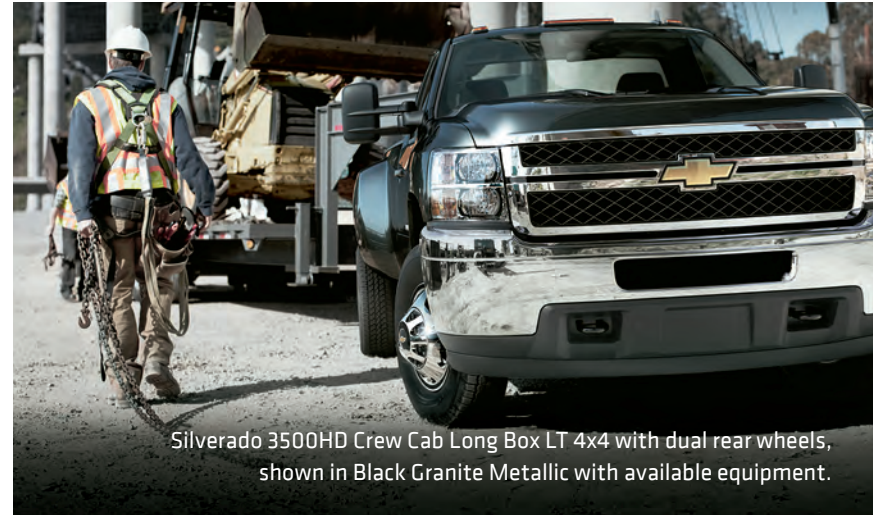


Note: Height (E) varies from 1807 mm (73.5 in.) to 1877 mm (73.9 in.) depending on series, model and tires selected.

THE HARDER WORKING HEAVY-DUTIES.

Last year, Chevrolet introduced a new generation of Silverado 2500HD and 3500 HD pickups that were totally re-engineered to deliver greater strength and more power. That translated into greater carrying and towing capacities. Not content to rest on its laurels, Chevrolet has tweaked the new trucks to increase capacities even further. The results are nothing short of staggering, with an unsurpassed fifth-wheel towing capacity of 10,433 kg (23,000 lb.)* Other enhancements for 2012 include new Trailer Sway Control and Hill Hold Assist – standard on all single rear wheel models. But Chevrolet acknowledges that Silverado HDs aren't the only heavy-duty pickups out there. So how do Silverado HDs stack up against the Ford Super Duty and Ram HD pickups? In real-world head-to-head testing conducted by the independent research company AMCI Testing, Silverado HD outshone its rivals in everything from acceleration and passing ability to frame rigidity and brake fade. Watch these tests for yourself by visiting: gm.ca/gm/english/vehicles/chevrolet/silverado-hd/feature-Head-to-Head?adv=107413. They'll tell you what you can demand from Silverado HD in the real world.

* Based on WardsAuto.com 2011 Large Pickup segmentation, 2011 Model Year competitive data for Ford Super Duty F-350 and Ram 3500 Heavy Duty pickup trucks and latest published information available at time of printing. Excludes other GM models.



Silverado 3500HD Crew Cab Long Box LT 4x4 with dual rear wheels, shown in Black Granite Metallic with available equipment.

STANDARD AND OPTIONAL ENGINES

ENGINES	Vortec™ 6.0L V8	Duramax® 6.6L V8 Turbo Diesel
HP @ RPM	360 @ 5400 ¹	397 @ 3000
Torque (lb.-ft.) @ RPM	380 @ 4200	765 @ 1600

Model	GVWR kg (lb.) ²		
2500HD SERIES (3/4-TON)			
Regular Cab long box 2WD	4218 (9300) / 4490 (9900)	S	0
Regular Cab long box 4x4	4309 (9500) / 4490 (9900)	S	0
Extended Cab standard box 2WD	4309 (9500) / 4490 (9900) / 4536 (10,000)*	S	0
Extended Cab long box 2WD	4309 (9500) / 4490 (9900) / 4536 (10,000)*	S	0
Extended Cab standard box 4x4	4309 (9500) / 4490 (9900) / 4536 (10,000)*	S	0
Extended Cab long box 4x4	4309 (9500) / 4490 (9900) / 4536 (10,000)*	S	0
Crew Cab standard box 2WD	4309 (9500) / 4490 (9900) / 4536 (10,000)*	S	0
Crew Cab long box 2WD	4309 (9500) / 4490 (9900) / 4536 (10,000)*	S	0
Crew Cab standard box 4x4	4309 (9500) / 4490 (9900) / 4536 (10,000)*	S	0
Crew Cab long box 4x4	4490 (9900) / 4536 (10,000)	S	0

3500HD SERIES (1-TON) with Single Rear Wheels			
Regular Cab long box 2WD	4717 (10,400) / –	S	0
Regular Cab long box 4x4	4854 (10,700) / 5171 (11,400)	S	0
Extended Cab long box 2WD	4854 (10,700) / 5080 (11,200)	S	0
Extended Cab long box 4x4	4990 (11,000) / 5262 (11,600)	S	0
Crew Cab standard box 2WD	4763 (10,500) / 5035 (11,100)	S	0
Crew Cab standard box 4x4	4899 (10,800) / 5216 (11,500)	S	0
Crew Cab long box 2WD	4854 (10,700) / 5171 (11,400)	S	0
Crew Cab long box 4x4	4990 (11,000) / 5262 (11,600)	S	0

3500HD SERIES (1-TON) with Dual Rear Wheels			
Regular Cab long box 2WD	6090 (13,400) / –	S	0
Regular Cab long box 4x4	5806 (12,800) / 5897 (13,000)	S	0
Extended Cab long box 2WD	5897 (13,000) / 5897 (13,000)	S	0
Extended Cab long box 4x4	5897 (13,000) / 5897 (13,000)	S	0
Crew Cab long box 2WD	5897 (13,000) / 5897 (13,000)	S	0
Crew Cab long box 4x4	5897 (13,000) / 5897 (13,000)	S	0

S – Standard. O – Optional.
 1 – 322 horsepower @ 4400 rpm on 3500HD models.
 2 – Gross Vehicle Weight Rating shown with standard 6.0L Gas engine/available 6.6L Diesel engine.
 * – 4536 kg (10,000 lb.) is the standard GVWR with the available 6.6L Diesel engine. A rating of 4490 kg (9900 lb.) can be specified at no additional charge.

2012 SILVERADO 2500HD / 3500HD PICKUP SPECIFICATIONS

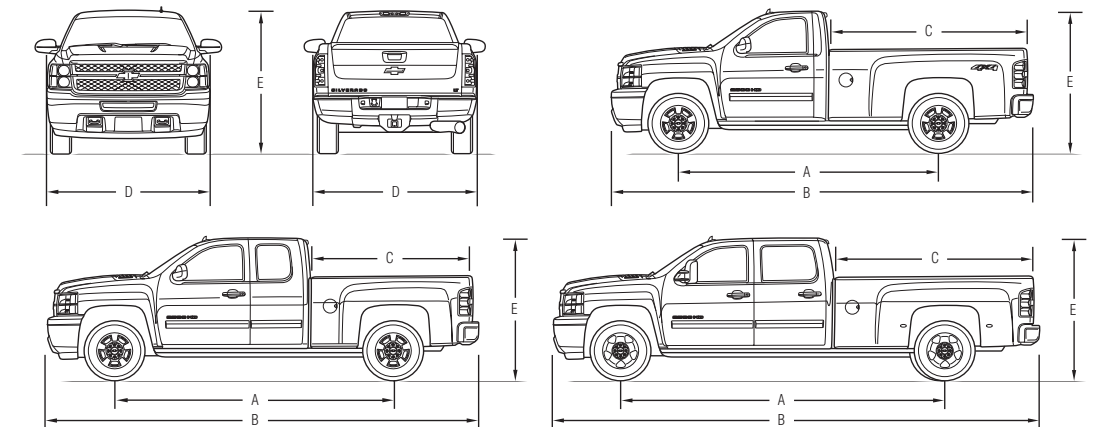
SERIES	2500HD	3500HD SRW ¹	3500HD DRW ²
GVWR³ Maximum kg (lb.)	4536 (10,000)	5262 (11,600)	6090 (13,400)
Payload Maximum⁴ kg (lb.)	1910 (4212) ⁵ 1575 (3473) ^{5,6} 1518 (3347) ^{5,6} 1605 (3538) ⁵ 1486 (3275) ^{5,6} 1499 (3305) ^{5,6}	2096 (4622) 2018 (4448) ⁵ 1957 (4314) ⁵ 2091 (4609) ⁵ 2021 (4455) ⁵ 1935 (4266) ⁵	3273 (7215) 2862 (6310) ⁵ 2814 (6204) ⁵ 2857 (6299) ⁵ 2736 (6033) ⁵ 2656 (5856) ⁵
ENGINE/TRANSMISSION AVAILABILITY			
Vortec™ 6.0L V8 – 360 hp/6-speed automatic transmission	S	–	–
Vortec™ 6.0L V8 – 322 hp/6-speed automatic transmission	–	S	S
Duramax® 6.6L V8 Turbo Diesel – 397 hp/6-speed Allison® automatic transmission	O	O	O
CHASSIS FEATURES			
Battery – 600 CCA (Two 730 CCA with Duramax® 6.6L V8 Turbo Diesel)	S	S	S
Brakes – Power hydraulic, front and rear disc (Hydro-Boost) – 4-wheel anti-lock braking system (ABS) with Dynamic Rear Proportioning (DRP) – Trailer Sway Control and Hill Hold Assist	S S S S	S S S S	S S S –
Frame – 3-piece modular design with hydroformed front section and fully boxed side rails	S	S	S
Fuel Tank – 136 L (30.6 imp. gal.)	S	S	S
Alternator – 125 amp (160 amp with 6.0L V8, dual 125 amp with Duramax® 6.6L V8 Turbo Diesel when Snow Plow Prep Package is ordered)	S	S	S
Steering – Recirculating ball, integral power	S	S	S
Front Suspension – Independent – short/long arm type with torsion bar springs and a stabilizer bar – GAWR ⁷ Range kg (lb.) – 2WD – GAWR ⁷ Range kg (lb.) – 4x4 (GAWR with Snow Plow Prep Package – 2722 (6000))	S 1996 (4400) / 2359 (5200) 1996 (4400) / 2540 (5600)	S 1996 (4400) / 2359 (5200) 1996 (4400) / 2540 (5600)	S 1996 (4400) / 2540 (5600) 2177 (4800) / 2540 (5600)
Rear Suspension – Hypoid gears, 2-stage multi-leaf springs on 2500HD/3-stage multi-leaf springs on 3500HD – GAWR ⁷ kg (lb.) – 2WD – GAWR ⁷ kg (lb.) – 4x4	S 2812 (6200) 2812 (6200)	S 3198 (7050) 3198 (7050)	S 4252 (9735) 4252 (9735)
Transfer Case – 2-speed, part-time, lever-operated – (4x4 WT models) – Electric shift 2-speed, part-time transfer case – (LT and LTZ 4x4 models)	S S	S S	S S
Wheels – 17" (432 mm), 8-bolt – 18" (457 mm), 8-bolt – 20" (508 mm), 8-bolt	S O O	– S –	S – –
Tires – Standard – Optional (standard on LTZ) – Optional	LT245/75R17 LT265/70R18 LT265/60R20	LT245/70R18 – –	LT235/80R17 – –

S – Standard. O – Optional.
 1 – SRW: Single Rear Wheel model.
 2 – DRW: Dual Rear Wheel model.
 3 – Gross Vehicle Weight Rating includes vehicle, passengers, equipment and cargo.
 4 – Maximum payload capacity includes weight of the driver, passengers, optional equipment and cargo and are approximate.
 5 – Available as Pickup Box Delete. Also deletes rear bumper and spare tire.
 6 – Not available as Pickup Box Delete on standard box (6' 6") models.
 7 – Gross Axle Weight Rating is the maximum load carrying capacity of the total axle and suspension system (tires, wheels, springs, axle housing, bearings, etc.).

DIMENSIONS, mm (in.)

Model	A Wheelbase	B Vehicle Length	C Inside Box Length	D Max. Width
2500HD Regular Cab long box	3396 (133.7)	5715 (225.0)	2484 (97.8)	2032 (80.0)
2500HD Extended Cab standard box	3663 (144.2)	5857 (230.6)	2002 (78.8)	2032 (80.0)
2500HD Extended Cab long box	4018 (158.2)	6337 (249.5)	2484 (97.8)	2032 (80.0)
2500HD Crew Cab standard box	3904 (153.7)	6101 (240.2)	2002 (78.8)	2032 (80.0)
2500HD Crew Cab long box	4260 (167.7)	6581 (259.1)	2484 (97.8)	2032 (80.0)
3500HD Regular Cab long box	3396 (133.7)	5715 (225.0)	2484 (97.8)	2436 (95.9)*
3500HD Extended Cab long box	4018 (158.2)	6337 (249.5)	2484 (97.8)	2436 (95.9)*
3500HD Crew Cab standard box	3904 (153.7)	6101 (240.2)	2002 (78.8)	2032 (80.0)
3500HD Crew Cab long box	4260 (167.7)	6581 (259.1)	2484 (97.8)	2436 (95.9)*

* With Dual Rear Wheels.
 Note: Height (E) varies from 1966 mm (77.4 in.) to 1989 mm (78.3 in.) depending on series, model and tires selected.



CAPABILITY MEETS POSSIBILITY.

Silverado 3500HD Chassis Cabs redefined capabilities for the category last year, based on a totally re-engineered chassis and substantial increases in power, making them an even stronger foundation for your customized business application. The frame delivers increased torsional rigidity compared to the previous design. Its strength is enhanced by a two-piece configuration that was purpose-built for Chassis Cab applications. The front section is hydroformed and fully boxed to support the powertrain and front suspension. The rear frame rails overlap the front section, creating a strong reinforcement and uses

a medium-duty truck "C" channel section, providing a flat surface to the back of the cab. Upfitting is made that much easier by the use of industry standard 60-in. or 84-in. cab-to-axle dimensions and 34-in. frame rail spacing. The rest is up to you – and your upfitter. In fact, Chevrolet adds more choices with the "Box Delete" option on Silverado 2500HD and 3500HD pickups – meeting your need for specific cab-body types or single rear wheel configurations. Even more capable – with a seemingly endless variety of possible applications. Silverado Chassis Cabs.



Silverado 3500HD Crew Chassis Cab, shown in Silver Ice Metallic with equipment from an independent supplier.

STANDARD AND OPTIONAL ENGINES

ENGINES	Vortec™ 6.0L V8	Duramax® Turbo Diesel 6.6L V8
HP @ RPM	322 @ 4400	335 @ 3100
Torque (lb.-ft.) @ RPM	380 @ 4200	685 @ 1600

Model	GVWR Max. kg (lb.)*
3500HD Chassis Cab	
2WD models	5988 (13,200)
4x4 models	5988 (13,200)

S – Standard. O – Optional.
*Gross Vehicle Weight Rating includes vehicle, passengers, equipment and cargo.

2012 SILVERADO 3500HD CHASSIS CAB SPECIFICATIONS

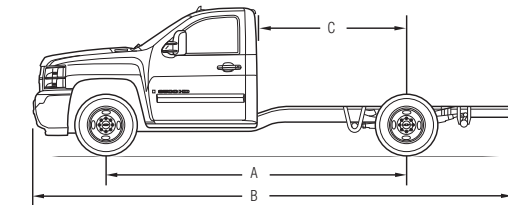
SERIES	3500HD ¹
GVWR² kg (lb.) – 2WD – 4x4	5988 (13,200) 5988 (13,200)
Body and Payload Maximum³ kg (lb.) – 2WD Regular Cab – 4x4 Regular Cab – 2WD Crew Cab – 4x4 Crew Cab	3419 (7538) 3205 (7066) 3080 (6791) 2923 (6443)
ENGINE/TRANSMISSION AVAILABILITY	
Vortec™ 6.0L V8 – 322 hp/6-speed HD automatic transmission	S
Duramax® 6.6L V8 Turbo Diesel – 335 hp/6-speed Allison® automatic transmission	O
CHASSIS FEATURES	
Battery – 600 CCA (Two 730 CCA with Duramax® 6.6L V8 Turbo Diesel)	S
Brakes – Power hydraulic, front and rear disc (Hydro-Boost) – 4-wheel anti-lock braking system (ABS) – Dynamic Rear Proportioning (DRP)	S S S
Frame – Modular design with hydroformed front section and flat side rails	2-piece
Fuel Tank – Dual tank capacity – Front tank 87 L/Rear tank 151 L	238 litres
Alternator – 125 amp (160 amp with Snow Plow Prep Package and 6.0L V8)	S
Steering – Recirculating ball, integral power	S
Front Suspension – Independent – short/long arm type with torsion bar springs and a stabilizer bar – GAWR ⁴ Range kg (lb.) – 2WD – GAWR ⁴ Range kg (lb.) – 4x4 – 2722 (6000) with Snow Plow Prep Package	S 1996 (4400) / 2540 (5600) 1996 (4400) / 2540 (5600)
Rear Suspension – Full-floating axle with hypoid gears, 3-stage multi-leaf springs – GAWR ⁴ kg (lb.) – 2WD – GAWR ⁴ kg (lb.) – 4x4	S 4423 (9750) 4423 (9750)
Transfer Case – 2-speed, part-time, lever-operated – (WT 4x4 models) – Electric shift 2-speed, part-time transfer case – (LT 4x4 models)	S S
Wheels⁵ – 17" x 7.5" 8-bolt	S
Tires⁵ – 2WD – 4x4	LT235/80R17 LT235/80R17

S – Standard. O – Optional.
1 – DRW: Dual Rear Wheel model.
2 – Gross Vehicle Weight Rating includes vehicle, passengers, equipment and cargo.
3 – Maximum payload capacity includes weight of the driver, passengers, optional equipment, body and cargo and are approximate.
4 – Gross Axle Weight Rating is the maximum load carrying capacity of the total axle and suspension system (tires, wheels, springs, axle housing, bearings, etc.).
5 – Standard tires and wheels; your dealer can assist with available options.

DIMENSIONS, mm (in.)

Model	A Wheelbase	B Vehicle Length	C Cab to axle
3500HD Regular Chassis Cab	3492 (137.5)	5829 (229.5)	1519 (59.8)
3500HD Regular Chassis Cab	4115 (162.0)	6454 (254.1)	2141 (84.3)
3500HD Crew Chassis Cab	4356 (171.5)	6695 (263.6)	1509 (59.4)

S – Standard. O – Optional.
Note: Height varies from 1935 mm (76.2 in.) to 1963 mm (77.3 in.) depending on series, model and tires selected.



THE MID-SIZE TRUCKS THAT STAND TALL.

Just because you want a more fuel efficient and more manoeuvrable pickup doesn't mean you have to compromise. Colorado is the mid-size truck that delivers Chevrolet's rock-solid reliability. And your choice of Colorado is also uncompromised, with three engines, three suspension systems, three cabs, two box sizes and two trim levels – in addition to the Chassis Cab. That means you get the combination of capability and features you need for your application. If fuel efficiency is your priority, the Vortec™ 2.9L four-cylinder engine employs Variable Valve Timing (VVT) to help it earn 7.8 L/100 km highway and 11.4 L/100 km city ratings* – impressive for a truck this capable. Need more power? Colorado offers an available 242 horsepower Vortec™ 3.7L

five-cylinder engine and a 300 horsepower Vortec™ 5.3L V8 – the engine that powers so many Silverado 1500 full-size pickups. As for capability, the Gross Vehicle Weight Ratings range up to 2495 kg (5500 lb.). Pickup payloads go up to 648 kg (1429 lb.).** Plus you get the reassurance of StabiliTrak® electronic stability control system and OnStar®†. The mid-size truck that stands up to your expectations – the real truck that happens to be a mid-size. Colorado.

* 2012 Colorado 2WD, equipped with 2.9L engine and 5-speed manual transmission. Fuel consumption ratings based on GM testing in accordance with approved Transport Canada test methods. Your actual fuel consumption may vary.

** Base payload capacity includes weight of the driver, passenger, optional equipment and cargo.

† Visit onstar.ca for coverage map, details and system limitations. Services vary by model and conditions.



Colorado Regular Cab, shown in Summit White with equipment from an independent supplier.



Colorado Chassis Cabs, shown in Summit White with bodies from an independent supplier.

2012 COLORADO PICKUP & CHASSIS CAB SPECIFICATIONS

SERIES		COLORADO
GVWR ¹ with standard suspension kg (lb.) and standard engine	– 2WD Regular Cab	2200 (4850)
	– 4x4 Regular Cab	2336 (5150)
Payload Maximum ² kg (lb.)	– 2WD; Regular Cab, Pickup	2268 (5000)
	– 4x4; Regular Cab, Pickup	2404 (5300)
ENGINE AVAILABILITY	– 2WD Crew Cab	2268 (5000)
	– 4x4 Crew Cab	2404 (5300)
Transmission	– Chassis Cab – 2WD Regular Cab	2495 (5500)
	– Chassis Cab – 4x4 Regular Cab	2495 (5500)
Torque (lb.-ft.) @ RPM	– 2WD; Regular Cab, Pickup	648 (1429)
	– 4x4; Regular Cab, Pickup	640 (1410)

ENGINE AVAILABILITY	HP @ RPM	Torque (lb.-ft.) @ RPM	
Vortec™ 2.9L I-4	185 @ 5600	190 @ 2800	S
Vortec™ 3.7L I-5	242 @ 5600	242 @ 4600	0 ³
Vortec™ 5.3L V8	300 @ 5200	320 @ 3600	0 ⁴

TRANSMISSION AVAILABILITY	
Transmission – 5-speed manual with overdrive (not available with Vortec™ 3.7L I-5 and the Vortec™ 5.3L V8 engines)	S ³
– 4-speed automatic with overdrive (standard on Crew Cabs and required with Vortec™ 3.7L I-5 and Vortec 5.3L V8 engines)	0

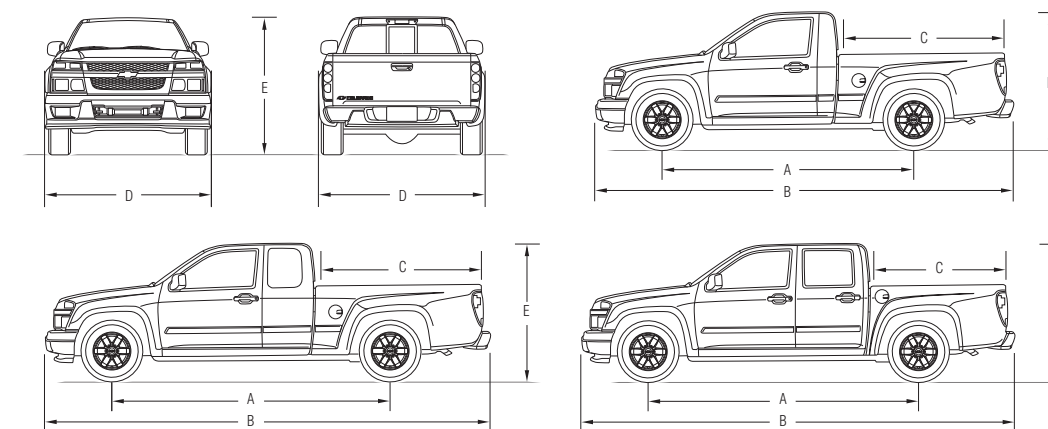
CHASSIS FEATURES	
Battery – 590 CCA	S
Block Heater	0
Brakes – Hydraulic, self-adjusting (front disc/rear drum)	S
– 4-wheel anti-lock braking system (ABS)	S
Fuel Tank – 72 L (15.8 imp. gal.)	S
Alternator – 125 amps	S
Steering – Power, rack-and-pinion	S
Front Suspension – Independent – coil springs in 2WD models (except Z71), torsion bars in 4x4 models and 2WD with Z71	S
– GAWR ⁵ kg (lb.) – 2WD models except Z71	1194 (2633)
– GAWR ⁵ kg (lb.) – 2WD models with Z71, all 4x4 models and Chassis Cab	1293 (2850)
Rear Suspension – 2-stage multi-leaf springs	S
– GAWR ⁵ kg (lb.)	1314 (2896)
Transfer Case – Part-time, 2-speed, electronic controls – (4x4 models) – includes neutral for flat towing	S
Wheels – 16" x 6" steel and 18" x 8" aluminum and vary by suspension and trim level – refer to the Colorado brochure for details	S
Tires – Vary from P215/70R16 to P235/50R18, vary by suspension and trim level – refer to the Colorado brochure for details	S

1 – Gross Vehicle Weight Rating includes vehicle, passengers, equipment and cargo. Higher GVWRs require optional equipment.
 2 – Maximum payload capacity includes weight of the driver, passengers, optional equipment and cargo and are approximate.
 3 – Vortec™ 3.7L 5-cylinder engine and automatic transmission are standard on Chassis Cab models and all 4x4 Crew Cabs.
 4 – Available in Extended and Crew Cab Model Pickups with 2LT trim.
 5 – Gross Axle Weight Rating is the maximum load carrying capacity of the total axle and suspension system (tires, wheels, springs, axle housing, bearings, etc.).

DIMENSIONS, mm (in.)

Model	A Wheelbase	B Vehicle Length	C Inside Box Length	D Max. Width
Regular Cab Pickup	2827 (111.3)	4887 (192.4)	1849 (72.8)	1717 (67.6)
Extended Cab Pickup	3200 (126.0)	5260 (207.1)	1849 (72.8)	1717 (67.6)
Crew Cab Pickup	3200 (126.0)	5260 (207.1)	1552 (61.1)	1742 (68.6)
Regular Cab Chassis Cab	3200 (126.0)	5260 (207.1)	–	1717 (67.6)

Note: Height (E) varies from 1648 mm (64.9 in.) to 1725 mm (67.9 in.) depending on suspension, model and tires selected.



IT CARRIES ITSELF.

It's a given - you're looking at a full-size cargo van because you're looking for a mini-warehouse on wheels. Capacity rules. And Express Cargo Vans carry their weight in this regard - and then some. Regular Wheelbase models offer an enormous 7658 L (270.4 cu. ft.) of cargo room. Extended Wheelbase models expand that capacity to a cavernous 8890 L (313.9 cu. ft.). And with 1500, 2500 and 3500 models to choose from, you can select the van that can handle your loading requirements. Gross Vehicle Weight Ratings top out at a massive 4491 kg (9900 lb.). The same theme of choice extends to the

engines with a fuel-efficient Vortec™ 4.3L V6, three Vortec™ V8s, in addition to the workhorse Duramax® 6.6L V8 Turbo Diesel. But it isn't solely an ability to carry huge amounts of cargo effortlessly that defines Express Cargo Vans. It's also their ability to carry themselves on the road, with a sense of assurance that is supported by a series of driver control technologies. They include the standard StabiliTrak® electronic stability control system, in addition to the greater all-season traction of the 1500 All-Wheel Drive (AWD) model. Express Cargo Vans - they carry themselves with confidence.



Express 1500 Cargo Van, shown in Summit White with equipment from an independent supplier.

2012 EXPRESS CARGO VAN SPECIFICATIONS

SERIES	1500 RWD*	1500 AWD*	2500 RWD*	3500 RWD*
GVWR¹ kg (lb.)	3311 (7300)	3311 (7300)	3901 (8600)	4355 (9600)
Payload Maximum² kg (lb.) - RWB ³ - LWB ³	1058 (2332) -	683 (1505) -	1478 (3259) 1381 (3045)	1970 (4344) 1807 (3983)
ENGINE AVAILABILITY				
Vortec™ 4.3L V6 - 195 hp @ 4600 rpm / 260 lb.-ft. torque @ 2800 rpm	S	-	-	-
Vortec™ 4.8L V8 - 280 hp @ 5200 rpm / 295 lb.-ft. torque @ 4600 rpm ⁴	-	-	S	S
Vortec™ 5.3L V8 - 310 hp @ 5200 rpm / 334 lb.-ft. torque @ 4500 rpm ⁴	0	S	-	-
Vortec™ 6.0L V8 - 324 hp @ 4800 rpm / 373 lb.-ft. torque @ 4400 rpm ⁴	-	-	0	0
Duramax® 6.6L V8 Turbo Diesel - 260 hp @ 3100 rpm / 525 lb.-ft. torque @ 1600 rpm	-	-	0	0
TRANSMISSION AVAILABILITY				
4-speed automatic with Overdrive and Tow/Haul Mode	S	S	-	-
6-speed automatic with Overdrive and Tow/Haul Mode - Heavy-duty	-	-	S	S
CHASSIS FEATURES				
Battery - 600 CCA with run-down protection and retained accessory power	S	S	S	S
Battery - 770 CCA, heavy-duty (not available with Duramax® 6.6L V8 Turbo Diesel)	0	0	0	0
Battery - Dual 770 CCA (included with Duramax® 6.6L V8 Turbo Diesel)	-	-	0	0
Brakes - 4-wheel disc with 4-wheel anti-lock braking system (ABS) - Hydro-Boost	S	S	S	S
Fuel Tank - 117 L (25.7 imp. gal.)	S	S	S	S
Alternator - 105 amp (not available with Duramax® 6.6L V8 Turbo Diesel or 3500 LWB ³)	-	-	S	S
- 125 amp (not available with Vortec™ 4.3L V6)	0	0	0	0
- 145 amp (included when air conditioning is specified or with Vortec™ 4.3L V6 or 3500 LWB ³ and with Duramax® 6.6L V8 Turbo Diesel)	-	-	0	0
- Dual, 145 amp each (requires Duramax® 6.6L V8 Turbo Diesel and air conditioning)	-	-	0	0
StabiliTrak® - electronic stability control system	S	S	S	S
Steering - Power, rack-and-pinion	S	S	-	-
- Recirculating ball, integral power	-	-	S	S
Front Suspension - Independent, RWD - coil springs/AWD - torsion bars	S	S	S	S
- GAWR ⁵ kg (lb.)	1633 (3600)	1633 (3600)	1860 (4100)	1950 (4300)
Rear Suspension - Tapered multi-leaf springs	S	S	S	S
- GAWR ⁵ kg (lb.)	1814 (4000)	1814 (4000)	2431 (5360)	2760 (6084)
Wheels - Steel disc type (5)	17" x 7.5"	17" x 7.5"	16" x 6.5"	16" x 6.5"
- Attachment	6 bolts	6 bolts	8 bolts	8 bolts
Tires - Size (5)	P245/70R17	P245/70R17	LT245/75R16E	LT245/75R16E

* - RWD = Rear-Wheel Drive
- AWD = All-Wheel Drive

S - Standard, 0 - Optional.

1 - Gross Vehicle Weight Rating includes vehicle, passengers, equipment and cargo.

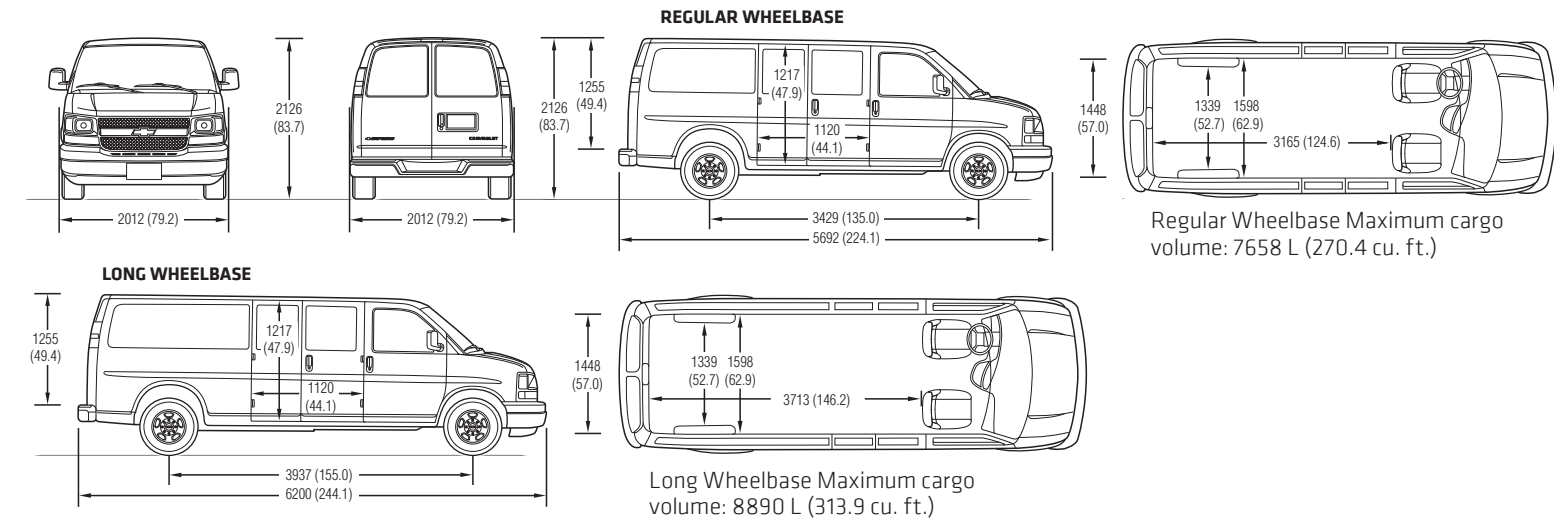
2 - Maximum payload capacity includes weight of the driver, passengers, optional equipment and cargo and are approximate.

3 - RWB = Regular Wheelbase models, LWB = Long Wheelbase model.

4 - Flex-Fuel Vortec™ V8 engines are capable of running on unleaded fuel or up to 85% ethanol - E85.

5 - Gross Axle Weight Rating is the maximum load-carrying capacity of the total axle and suspension system (tires, wheels, springs, axle housing, bearings, etc.).

DIMENSIONS, mm (in.)



BY THE NUMBERS.

Name your number. Express Passenger Vans are available in 1500 series Regular Wheelbase models with seating for eight, 2500 and 3500 Regular Wheelbase models with seating for 12, and 3500 Long Wheelbase models with available 15-passenger seating. Beyond capacity, you can select an engine that matches your load, fuel efficiency and performance expectations, with three Vortec™ V8s to choose from, in addition to the renowned Duramax® 6.6L V8 Turbo Diesel. The flip side of the large seating capacity is the imperative need for passenger safety that results from precise control. In Express Passenger Vans, that is answered by the

combination of four-wheel disc brakes with ABS in conjunction with StabiliTrak®. It helps counter the forces of a lateral skid by adjusting brake pressure to individual wheels and engine power to help you return to your intended driving line. Electronic stability control systems like StabiliTrak® have been proven to reduce the risk of a single-vehicle crash by an eye-opening 63 percent.* And Express also offers the perfect antidote to the Canadian climate – a 1500 All-Wheel Drive (AWD) model. Express Passenger Vans – they have your number.

* According to information published by the U.S. Department of Transportation's National Highway Traffic Safety Administration, July 2007.



Express 3500 Extended Wheelbase Passenger Van, shown in Sheer Silver Metallic with available equipment.

DIMENSIONS, mm (in.)

Series/Model	Wheelbase	Passenger Capacity	
		Standard	Optional
G1500 Express Passenger	3429 (135.0)	8	–
H1500 Express Passenger AWD	3429 (135.0)	8	–
G2500 Express Passenger	3429 (135.0)	12	–
G3500 Express Passenger	3429 (135.0)	12	–
G3500 Express Passenger LWB	3937 (155.0)	12	15

2012 EXPRESS PASSENGER VAN SPECIFICATIONS

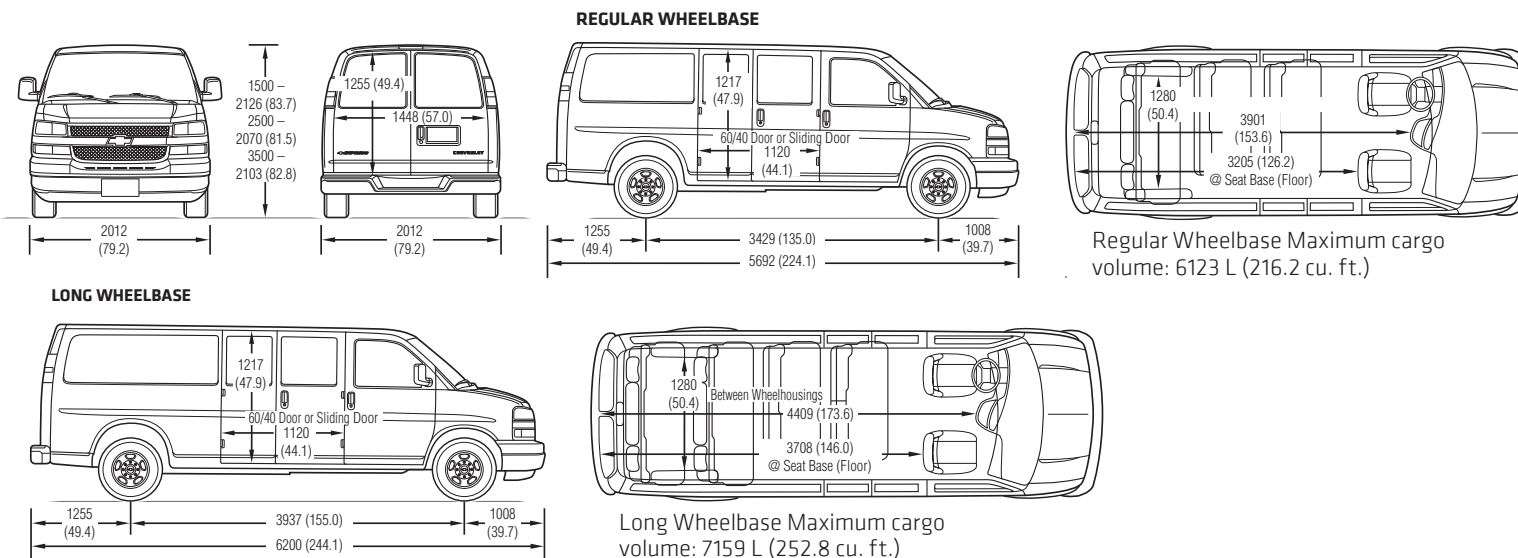
SERIES	1500 RWD*	1500 AWD*	2500 RWD*	3500 RWD*
GVWR¹ kg (lb.)	3311 (7300)	3311 (7300)	3901 (8600)	4355 (9600)
Payload Maximum² kg (lb.) – RWB³ – LWB³	728 (1606) –	695 (1532) –	1214 (2677) –	1571 (3463) 1426 (3144)
ENGINE AVAILABILITY				
Vortec™ 4.8L V8 – 280 hp @ 5200 rpm / 295 lb.-ft. torque @ 4600 rpm ⁴	–	–	S	S
Vortec™ 5.3L V8 – 310 hp @ 5200 rpm / 334 lb.-ft. torque @ 4500 rpm ⁴	S	S	–	–
Vortec™ 6.0L V8 – 324 hp @ 4800 rpm / 373 lb.-ft. torque @ 4400 rpm ⁴	–	–	0	0
Duramax® 6.6 L V8 Turbo Diesel – 260 hp @ 3100 rpm / 525 lb.-ft. torque @ 1600 rpm	–	–	–	0
TRANSMISSION AVAILABILITY				
4-speed automatic with Overdrive and Tow/Haul Mode	S	S	–	–
6-speed automatic with Overdrive and Tow/Haul Mode – Heavy-duty	–	–	S	S
CHASSIS FEATURES				
Battery – 600 CCA with run-down protection and retained accessory power	S	S	S	S
Battery – 770 CCA, heavy-duty (not available with Duramax® 6.6 L V8 Turbo Diesel)	0	0	0	0
Battery – Dual 770 CCA (included with Duramax® 6.6 L V8 Turbo Diesel)	–	–	–	0
Brakes – 4-wheel disc with 4-wheel anti-lock braking system (ABS) – Hydro-Boost	S	S	S	S
Fuel Tank – 117 L (25.7 imp. gal.)	S	S	S	S
Alternator – 105 amp	–	–	S	S
Alternator – 125 amp	S	S	–	–
Alternator – 145 amp (included with rear air conditioning or Duramax® Diesel)	0	0	0	0
StabiliTrak® – Electronic stability control system, includes traction assist	S	S	S	S
Steering – Power, rack-and-pinion – Recirculating ball, integral power	S –	S –	– S	– S
Front Suspension – Independent, 2WD – coil springs/AWD – torsion bars – GAWR ⁵ kg (lb.)	S 1633 (3600)	S 1678 (3700)	S 1860 (4100)	S 2087 (4600)
Rear Suspension – Tapered multi-leaf springs – GAWR ⁵ kg (lb.)	S 1814 (4000)	S 1814 (4000)	S 2431 (5360)	S 2760 (6084)
Wheels – Steel disc type (5) – aluminum with chrome centre cap on 1500 LT models – Attachment	17" x 7.5" 6 bolts	17" x 7.5" 6 bolts	16" x 6.5" 8 bolts	16" x 6.5" 8 bolts
Tires – Size (5)	P245/70R17	P245/70R17	LT245/75R16E	LT245/75R16E

* – RWD = Rear-Wheel Drive
– AWD = All-Wheel Drive

S – Standard, 0 – Optional
1 – Gross Vehicle Weight Rating includes vehicle, passengers, equipment and cargo.
2 – Maximum payload capacity includes weight of the driver, passengers, optional equipment and cargo and are approximate.

3 – RWB = Regular Wheelbase models, LWB = Long Wheelbase model.
4 – FlexFuel Vortec™ V8 engines are capable of running on unleaded fuel or up to 85% ethanol – E85.
5 – Gross Axle Weight Rating is the maximum load-carrying capacity of the total axle and suspension system (tires, wheels, springs, axle housing, bearings, etc.).

DIMENSIONS, mm (in.)



WARRANTY

IT ISN'T FINE PRINT – IT'S A COMMITMENT.

Chevrolet builds its cars and trucks for the way you use them and drive them. But that's only step one. Every Chevrolet is also built to continue to live up to the highest standards, year after year. You can take added peace of mind in knowing that every Chevrolet is also backed by the best coverage in Canada:

- 3-year/60,000 km New Vehicle Limited Warranty*
- 5-year/160,000 km Powertrain Component Limited Warranty, with \$0 deductible on repairs and the warranty is fully transferable at no charge*
- 5-year/160,000 km Courtesy Transportation*
- 5-year/160,000 km 24/7 Roadside Assistance*
- 6-year/160,000 km rust-through perforation coverage*
- 8-year/130,000 km coverage on catalytic converters and powertrain control modules (PCMs)*
- 8-year/160,000 km coverage on specific hybrid components on Silverado Hybrid model.*

*Whichever comes first. Conditions and limitations apply, see dealer for details.

OTHER OWNERSHIP PRIVILEGES AND PROGRAMS:**

- **GM Protection Plan (GMPP)** – the only extended service plan backed by the resources and commitment of General Motors, GMPP may be purchased at the time of sale or subsequently during the New Vehicle Limited Warranty period.
- **GM Goodwrench Service** – with GM-certified technicians and GM-approved parts, nobody knows your GM vehicle better.
- **Chevrolet Owner Centre** – as an owner, take advantage of the Chevrolet Owner Centre. This online owner's destination gives you access to coupons, contests, current offers and the latest driving and maintenance tips. Find out more at ChevroletOwner.ca

**Conditions and limitations apply.

TO HELP YOU PURCHASE OR LEASE A NEW VEHICLE:

- **Purchase Financing and Leasing** – on-the-spot financing, see your dealer for full details.†
- **GM Student Bonus Program** – students or recent graduates of high school, college or university** may be entitled to receive a Student Bonus vehicle redemption allowance of \$500 or \$750†† (tax inclusive) (purchased vehicle dependant) to use towards the purchase, lease or finance of one eligible new Chevrolet vehicle.
- **The GM Card** – GM cardholders may redeem up to \$3500 GM Card® Earnings (subject to Vehicle Redemption Allowances) toward the Total Purchase Price on eligible new GM vehicles††. For full program details please visit thegmcard.ca

†Subject to eligibility. ††Program subject to change. **Conditions and limitations apply.

INFORMATION RESOURCES:

You can find more information about these programs from your GM dealer, or at these information centres:

- The GM website at gm.ca
- The GM Customer Care Centre at **1-800-GM-DRIVE (1-800-463-7483)** or **1-800-263-3830** for TDD users).

A WORD ABOUT THIS BROCHURE

Some of the equipment shown or described throughout this brochure may be available at extra cost. We have tried to make this brochure comprehensive and factual. We reserve the right, however, to make changes at any time, without notice, in prices, colours, materials, equipment, specifications, models and availability. Specifications, dimensions, measurements, ratings and other numbers in this brochure and other printed materials provided at the dealership or affixed to vehicles are approximates based upon design and engineering drawings and prototypes and laboratory tests. Your vehicle may differ due to variations in manufacture and equipment. Since some information may have been adapted since the time of the printing, please check with your GM dealer for complete details. General Motors of Canada Limited reserves the right to lengthen or shorten the model year for any product, for any reason, or to start and end model years at different times.

A WORD ABOUT ASSEMBLY

GM vehicles are equipped with engines and components produced and assembled by different operating units of General Motors, its subsidiaries and suppliers and these engines and components may change or be obtained from different sources from time to time. All such engines and components are approved for use in GM vehicles. Certain equipment ordered may be unavailable at the time of assembly and we suggest that you verify that your vehicle includes the equipment you ordered, or if there are changes, that they are acceptable to you.

TRADEMARKS

The marks appearing in this brochure including, but not limited to: General Motors, GM, Chevrolet, the Chevrolet emblem, Colorado, Express, Silverado, Z71 and their respective logos, emblems, slogans and vehicle model names and body designs; and other marks such as Active Fuel Management, Allison, Autotrac, Duramax, StabiliTrak and Vortec are trademarks of General Motors and/or General Motors of Canada Limited, its subsidiaries, affiliates or licensors.

OnStar and the OnStar emblem are registered trademarks and OnStar RemoteLink is a trademark of OnStar, LLC.

Facebook is a trademark of Facebook, Inc.

Twitter is a trademark of Twitter, Inc.

YouTube and Android mobile technology platform are trademarks of Google, Inc.

COPYRIGHT

©Copyright 2011 General Motors of Canada Limited. All Rights Reserved. All text, images, graphics, and other materials in this brochure are subject to the copyright and other intellectual property rights of General Motors and/or General Motors of Canada Limited. These materials may not be reproduced, distributed or modified without the express written permission of General Motors and/or General Motors of Canada Limited.

Printed in Canada, November 2011.

IT IS WHAT YOU MAKE IT.

You need a solid foundation for your business application. You need a truck that can be easily and effectively customized for what you demand of it. Express Cutaway Van is engineered for that purpose. It has all the essentials covered, with Gross Vehicle Weight Ratings that range from up to 5579 kg (12,300 lb.) on 3500 models and up to 6441 kg (14,200 lb.) on 4500 models. The engine lineup spans from a fuel-efficient 260 horsepower Vortec™ 4.8L V8 up to the available Duramax® 6.6L V8 Turbo Diesel

that generates a load-moving 525 lb.-ft. of torque. All the engines are mated to a heavy-duty six-speed automatic transmission that features two fuel-saving overdrive gears, as well as a Tow/Haul mode. But that is only the starting point. What further distinguishes Express Cutaway Vans is their ability to be tailored by vocation, with dedicated ambulance, R/V, shuttle bus and school bus prep packages that make it simpler to complete the job of upfitting your van. Express Cutaway: it's ready – make it yours.



Express Cutaway Van shown in Summit White, with available equipment and body from an independent supplier.

2012 EXPRESS CUTAWAY VAN SPECIFICATIONS

SERIES	3500	3500	3500	4500
Model Number	CG33503	CG33803	CG33903	CG33803
Model Availability	SWB ¹	RWB ¹	LWB ¹	RWB ¹
GVWR² kg (lb.) – Standard – Optional	4355 (9600) ³ 4500 (9900) ³ 4536 (10,000) 5579 (12,300)	4536 (10,000) 5579 (12,300) – –	5579 (12,300) – – –	6441 (14,200) – – –
Payload Maximum⁴ kg (lb.) – Standard – Highest available GVWR	2429 (5354) 3253 (7171)	2272 (5008) 3238 (7139)	3271 (7212) –	4140 (9128) –

ENGINE AVAILABILITY

Vortec™ 4.8 L V8 – 260 hp @ 4600 rpm / 295 lb.-ft. torque @ 4600 rpm	S	S	–	–
Vortec™ 6.0 L V8 – 324 hp @ 4800 rpm / 373 lb.-ft. torque @ 4400 rpm	0	0	S	S
Duramax® 6.6 L V8 Turbo Diesel – 260 hp @ 3100 rpm / 525 lb.-ft. torque @ 1600 rpm	0	0	0	0

TRANSMISSION AVAILABILITY

Automatic, 6-speed with Overdrive and Tow/Haul Mode – Heavy-duty	S	S	S	S
---	---	---	---	---

CHASSIS FEATURES

Battery – 600 CCA with rundown protection (dual 770 CCA with Duramax® 6.6L V8 Turbo Diesel)	S	S	S	S
Brakes – 4-wheel disc with 4-wheel anti-lock braking system (ABS) – Hydro-Boost	S	S	S	S
Fuel Tank – 125 L (27.5 imp. gal.)	S	S	S	S
Alternator – 105 amp (dual 145 amp optional with Duramax® 6.6L V8 Turbo Diesel engine)	S	S	S	S
Steering – Recirculating ball, integral power	S	S	S	S
Front Suspension – Independent – coil springs – GAWR ⁵ kg (lb.)	S 1950 (4300)	S 1860 (4100)	S 2087 (4600)	S 2087 (4600)
Rear Suspension – Tapered multi-leaf springs – GAWR ⁵ kg (lb.)	S 2760 (6084)	S 3402 (7500)	S 3901 (8600)	S 4355 (9600)
Wheels – Steel disc type – single rear – Steel disc type – dual rear	16" x 6.5" 16" x 6.5"	– 16" x 6.5"	– 16" x 6.5"	– 16" x 6.5"
Tires – Single rear – Dual rear	LT245/75R16E LT215/85R16E	– LT215/85R16E	– LT215/85R16E	– LT225/75R16E

S – Standard, 0 – Optional.

1 – SWB – Short Wheelbase model – 3530 mm (139.0 in.) for 3.7 m (12 ft.) or 4.3 m (14 ft.) body lengths.
RWB – Regular Wheelbase model – 4039 mm (159.0 in.) for 4.3 m (14 ft.) or 4.6 m (15 ft.) body lengths.
LWB – Long Wheelbase model – 4496 mm (177.0 in.) for 4.9 m (16 ft.) body lengths.

2 – Gross Vehicle Weight Rating includes vehicle, passengers, equipment and cargo. Higher GVWRs require optional equipment.

3 – Equipped with single rear wheels. All other models have dual rear wheels.

4 – Maximum payload capacity includes weight of the driver, passengers, optional equipment, body and cargo and are approximate.

5 – Gross Axle Weight Rating is the maximum load carrying capacity of the total axle and suspension system (tires, wheels, springs, axle housing, bearings, etc.).

DIMENSIONS, mm (in.)

Wheelbase	SWB	RWB	LWB
A Wheelbase	3531 (139.0)	4039 (159.0)	4496 (177.0)
B Vehicle length	6266 (246.7)	6774 (266.7)	7234 (284.8)
C Maximum width ¹	2344 (92.3)	2344 (92.3)	2344 (92.3)
D Overall height (max.) ²	2106 (82.9)	2106 (82.9)	2106 (82.9)
E Front bumper to axle	1008 (39.7)	1008 (39.7)	1008 (39.7)
F Cab to axle	2032 (80.0)	2540 (100.0)	2997 (118.0)
G Cab to end of frame	3772 (148.5)	4280 (168.5)	4737 (186.5)

1 – Measurements are for Dual Rear Wheels. Single rear wheel width is 2009 mm (79.1 in.)

2 – Varies depending on tire size, GVWR.

