



2012 SANTA FE

2012 SANTA FE

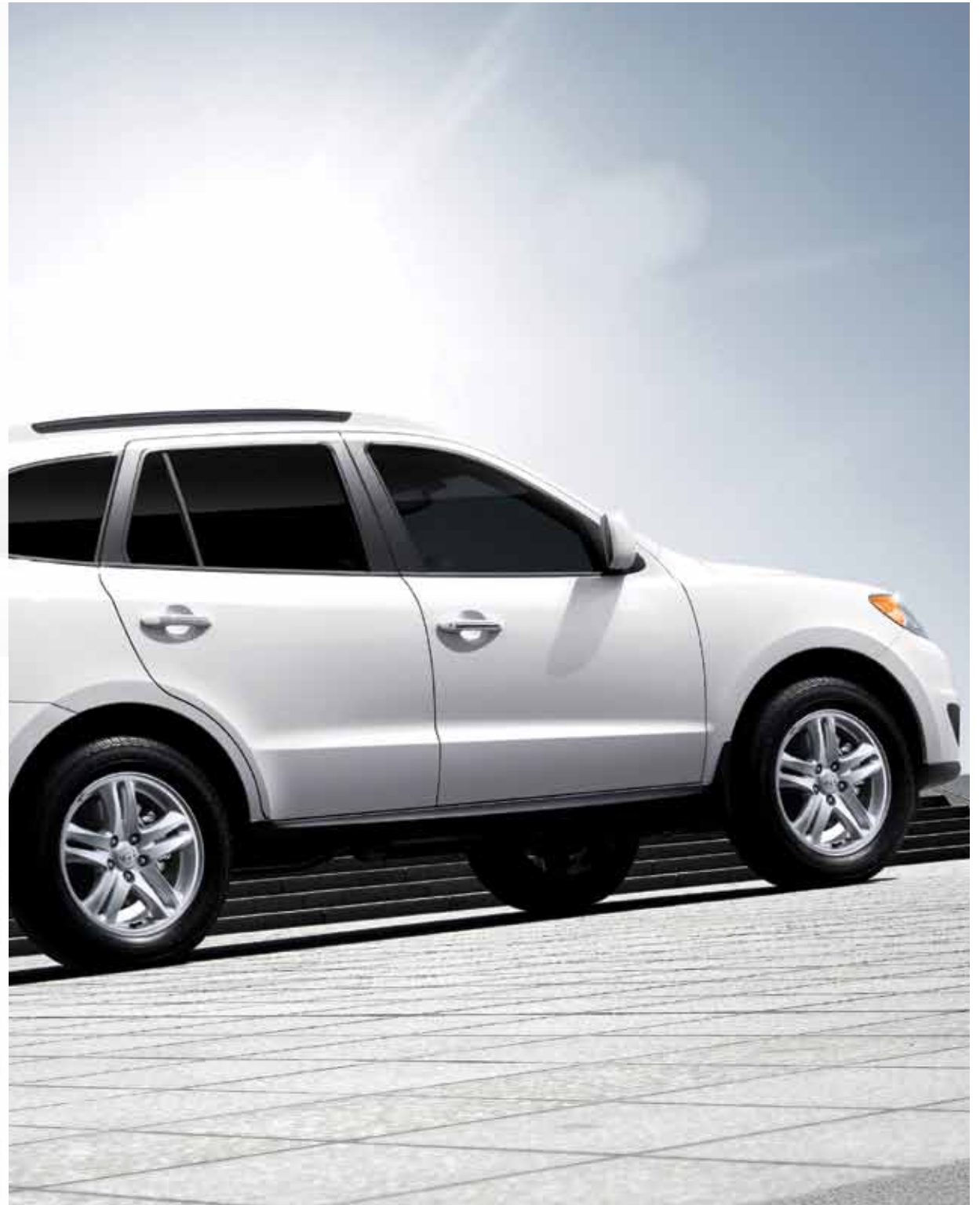
STYLE, UTILITY AND AGILITY.

Everyone does something well. The true standouts, though, excel at a number of things. The 2012 Santa Fe is just such a vehicle. With equal parts sophisticated styling, resourceful utility and road-holding agility, the Santa Fe has become the definitive midsize utility vehicle. Instead of making tradeoffs – ride over cargo or looks over space – get it all. For a life on the move, we've got you covered in the 2012 Santa Fe.



A VISUAL IDEA, BROUGHT TO LIFE.

In a design this pleasing to the eye, there are no extraneous lines or incomplete thoughts. The Santa Fe melds stunning curves with modern accents to strike the perfect balance of contemporary styling and state-of-the-art functionality. An available sunroof and rear spoiler give your Santa Fe added sportiness, and standard roof-rack side rails provide further utility. Standard alloy wheels maximize the Santa Fe's clean good looks, giving it a commanding presence on the road. And with power-adjustable heated exterior mirrors and available all wheel drive and fog lights, you can outfit your Santa Fe for even the most unpredictable weather.

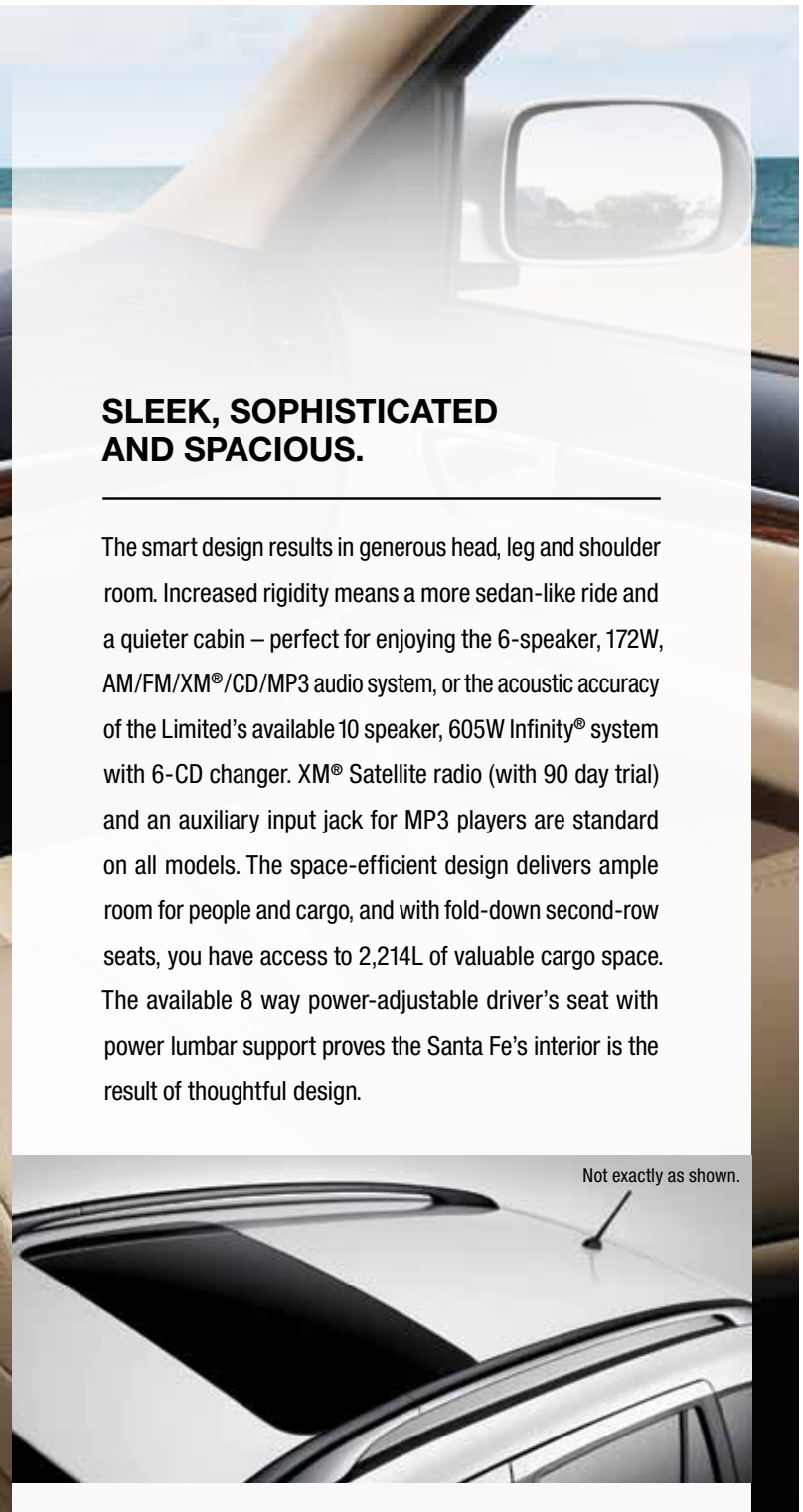




Not exactly as shown.

SLEEK, SOPHISTICATED AND SPACIOUS.

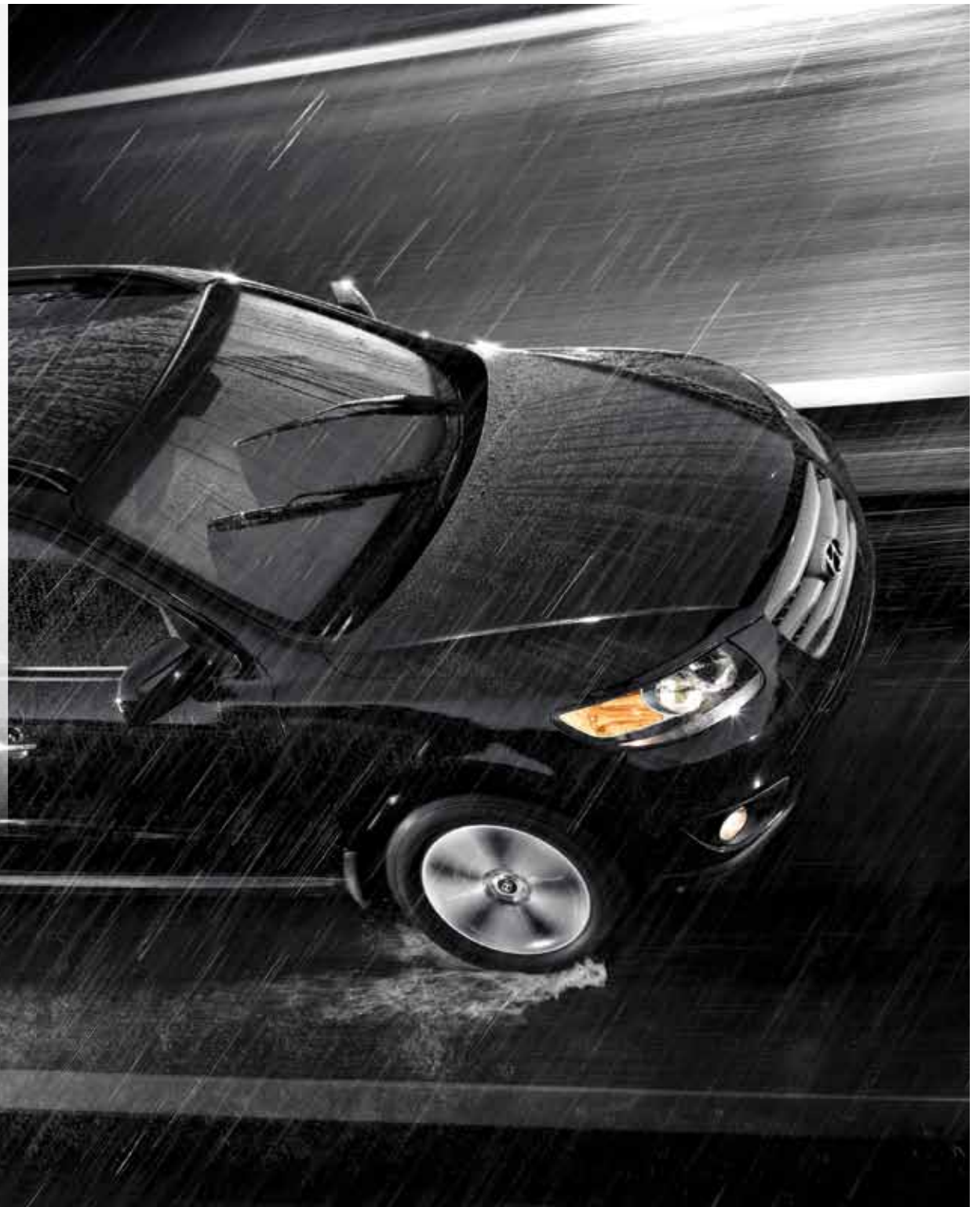
The smart design results in generous head, leg and shoulder room. Increased rigidity means a more sedan-like ride and a quieter cabin – perfect for enjoying the 6-speaker, 172W, AM/FM/XM®/CD/MP3 audio system, or the acoustic accuracy of the Limited's available 10 speaker, 605W Infinity® system with 6-CD changer. XM® Satellite radio (with 90 day trial) and an auxiliary input jack for MP3 players are standard on all models. The space-efficient design delivers ample room for people and cargo, and with fold-down second-row seats, you have access to 2,214L of valuable cargo space. The available 8 way power-adjustable driver's seat with power lumbar support proves the Santa Fe's interior is the result of thoughtful design.

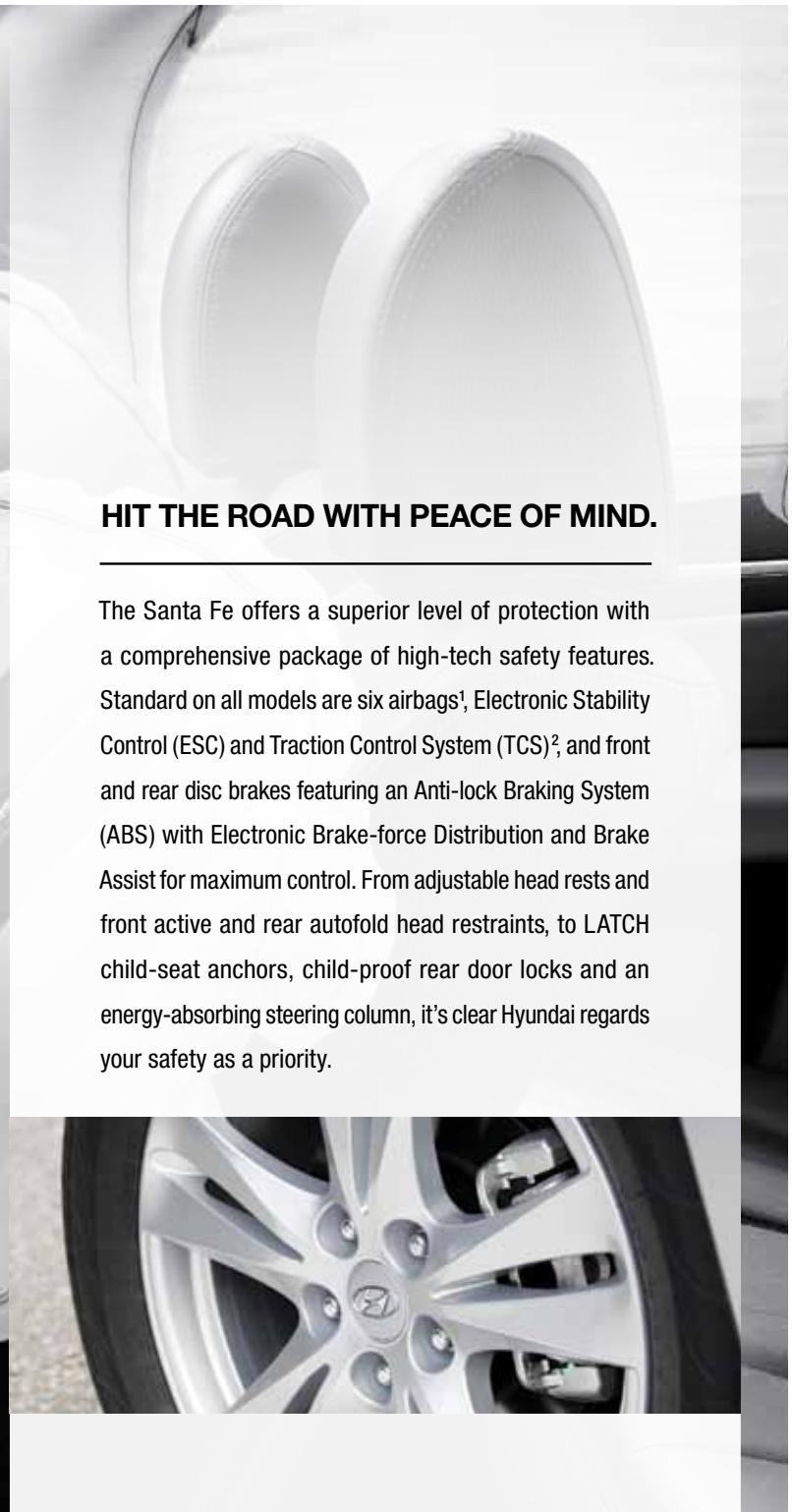


Not exactly as shown.

STRONG PERFORMANCE COUPLED WITH SENSIBLE EFFICIENCY.

The Santa Fe is the ready-for-anything CUV. First, a spirited yet economical 2.4L I4 getting 7.2 L/100km highway and 10.4 L/100km city, with automatic transmission. For V6 fans, the Santa Fe offers the larger, powerful 3.5L V6. It delivers 7.6 L/100km highway and 10.2 L/100km city. The 2.4L I4 also has two transmission options featuring 6 gears for fuel-saving performance – a 6-speed manual or 6-speed automatic with SHIFTRONIC® – while the 3.5L V6 comes standard with the 6-speed automatic transmission. Optional All Wheel Drive (AWD) provides assured control even in precarious weather conditions. The confident, agile, sedan-like handling of the Santa Fe has a refined feel and features direct sub-frame on frame mounting for improved ride quality.





HIT THE ROAD WITH PEACE OF MIND.

The Santa Fe offers a superior level of protection with a comprehensive package of high-tech safety features. Standard on all models are six airbags¹, Electronic Stability Control (ESC) and Traction Control System (TCS)², and front and rear disc brakes featuring an Anti-lock Braking System (ABS) with Electronic Brake-force Distribution and Brake Assist for maximum control. From adjustable head rests and front active and rear autofold head restraints, to LATCH child-seat anchors, child-proof rear door locks and an energy-absorbing steering column, it's clear Hyundai regards your safety as a priority.

Not exactly as shown.

2012 SANTA FE



Keep Safe Driving Well in Hand. To maximize convenience and safety, Bluetooth® Hands Free mobile phone interface is now standard on all Santa Fe models. Combined with the standard steering wheel-mounted cruise and audio controls, your hands can stay safely on the wheel for better control and reaction time.



Styled All Around. The distinctive face features a chrome accented grille, and available fog lights sitting beneath combination wrap-around, jewelled projector-beam headlamps. At back, the rear fascia contains highly visible and stylish combination tail lamps.



Airbags! Get the added peace of mind provided by the advanced coverage of the Santa Fe's six airbags – dual front airbags, together with driver and passenger seat-mounted side-impact airbags and side-curtain, rollover-sensing, roof-mounted airbags.



Under the Sun or the Night Sky. Things are looking up, thanks to an available power glass sunroof. Improved air circulation, enhanced cabin illumination and a cool view of the sky are yours with the simple touch of a button.



Fuel-Saving Eco Indicator. One of the easiest and most effective ways to improve fuel efficiency is to adjust your driving style. The Eco Indicator will show you when you're driving most efficiently, saving you gas and money while benefitting the environment.



Backup Camera for Safety. To help you spot children, bikes, and other vehicles, the Limited's available navigation system features a rear camera with high resolution LCD screen making backing up safer and easier.



Pure, Proficient and Powerful. When it comes to power, your options have never been better. The efficient and powerful 2.4L Theta II I4 or the available 3.5L Lambda II V6. Both are aluminum-constructed and come with Dual Continuously Variable Valve Timing (D-CVVT), making them fuel-efficient and clean-burning. They also deliver an impressive 175 and 276 horses respectively, for plenty of power when you need it.



Alloys for Everyone. The 2.4L GL Premium, 3.5L GL Sport and Limited models make memorable first impressions with 18" 10-spoke alloy wheels, while the 2.4L GL and 3.5L GL come standard with 17" 5-split-spoke alloys.



THERE'S NO SUBSTITUTE FOR PEACE OF MIND.

The quality of our vehicles is equally matched by the quality of our warranty. Rest assured we stand proudly and confidently behind our vehicles to give you the ultimate peace of mind with a 5 year/100,000KM comprehensive limited warranty, one of the best backed warranties in Canada. And now we also provide a Road Trip Planner service, helping you prepare worry free trips. You're covered with Hyundai.

**5 YEAR
WARRANTY**

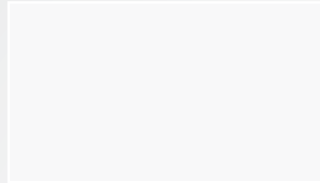
**100,000 KM
COMPREHENSIVE LIMITED WARRANTY**

5-year/100,000 km Comprehensive Limited Warranty*
5-year/100,000 km Powertrain Warranty
3 year Unlimited km Roadside Assistance**

EXTERIOR



Glacier White A C E
(Not Available After November 2011 Production)



Frost White Pearl A C E
(Available with January 2012 Production)



Moonstone Silver A D E



Sierra Red B C F



Granite Blue A C E



Twilight Black A C E



Titanium Silver A D E



Cabo Bronze B C F
(Available After November 2011 Production)

INTERIOR



Grey Cloth A



Beige Cloth B



Cocoa Black Cloth/Leather* C



Grey Cloth/Leather* D



Cocoa Black Leather E



Beige Leather F

Choice of interior colour depends upon exterior selection. Due to print production process, the colours shown throughout the brochure may vary slightly from the actual hue. See your dealer for model applications and to view the Hyundai Colour Selector. Visit hyundaicanada.com or see you dealer for details. *Available on 3.5L Sport Model only.

ACCESSORIES



CARGO TRAY. Add years to the interior of your Hyundai by protecting it from spills and messy loads with a durable, custom-fit cargo tray.



RUBBER FLOOR MATS. Protect the interior of your Hyundai from everyday dirt and debris with custom-made floor mats. Remove carpet mats prior to installation.



CROSS RAILS. This durable, quick-locking cross rail system lets you transport cargo easily, without sacrificing interior room. Remove when not in use.



FRONT BUMPER GUARD. Add style to your vehicle and protect the front bumper with a polished stainless steel bumper guard.



MUD GUARD KIT. Custom-fit mud guards keep the dirt and debris of everyday driving where it belongs.



PLASTIC HOOD PROTECTOR. Prevent dents and scratches caused by road and vehicle debris with an attractive plastic hood protector.



RUNNING BOARDS. Getting in and out of your vehicle is easy with a set of durable running boards.



SIDE STEPS. Stylish and functional, polished stainless steel side steps will add a rugged look to your vehicle.



SIDE VISORS. A New style side visor installs easily in the window channel with no unsightly exterior tape. Helps keep the elements out of the vehicles interior, including snow and rain.



TRAILER HITCH KIT. Designed to meet all your towing needs, a Hyundai hitch can accommodate a wide variety of hitch-mounted accessories. Kit includes: trailer hitch, ball mount and end cap. Chrome ball shown not included.

2.4L GL STANDARD EQUIPMENT:

2.4L, 175 hp, 16-valve, DOHC, 4-cylinder Theta II Engine with Dual Continuously Variable Valve Timing (D-CVVT)
 17" Alloy Wheels
 4-wheel Disc Brakes
 6-speed Manual Transmission
 Airbags¹: Dual Front Airbags, 2 Seat-mounted Side-impact, 2 Roof-mounted Side Curtains with Rollover Sensor
 Air Conditioning with Manual Temperature Controls and 2nd-row Ventilation Ducts
 AM/FM/XM[®]/CD/MP3 6-Speaker Audio System with 3-month XM[®] Trial Subscription
 Anti-lock Braking System (ABS) with Electronic Brake-force Distribution (EBD) and Brake Assist (BA)
 Bluetooth[®] Hands Free³ Phone System
 Centre Console Armrest with Storage and Dual Cupholders
 Cruise Control
 Driver's and Front Passenger's Vanity Mirrors with Extensions
 ECO Indicator (A/T)
 Electronic Stability Control (ESC) with Traction Control System (TCS)²
 Four 12-volt Outlets
 iPod[®]/USB and Aux. Audio Input Plug
 Map Lights
 Power Windows with Driver's Auto Up/Down
 Remote Keyless Entry with Alarm
 Roof-rack Side Rails
 Front, Multi-adjustable Bucket Seats with Active Head Restraints and Driver's Manual Lumbar Support
 2nd-row, 60/40 Split Fold-flat with Height-adjustable Head Restraints
 Steering Wheel-mounted Audio Controls
 Tilt-and-telescoping Steering Wheel
 Windshield Wiper De-icer
 Woodgrain Interior Accents
 Optional: 6-speed Automatic Transmission with SHIFTRONIC[®]

2.4L GL PREMIUM INCLUDES 2.4L GL STANDARD EQUIPMENT PLUS:

6-speed Automatic Transmission with SHIFTRONIC[®]
 18" Alloy Wheels
 Fog Lights
 Heated Front Seats
 Power Glass Sunroof with One-touch Open
 Trip Computer
 Optional: On Demand All-wheel Drive System

3.5L GL INCLUDES 2.4L GL STANDARD EQUIPMENT PLUS:

3.5L, 276 hp, 24-valve, DOHC, 6-cylinder Lambda II Engine with Dual Continuously Variable Valve Timing (D-CVVT)
 6-speed Automatic Transmission with SHIFTRONIC[®]
 Fog Lights
 Illuminated Sunvisor
 Heated Front Seats
 Trip Computer
 Towing Prep Package – Hitch and Accessories Not Included

3.5L GL SPORT INCLUDES 3.5L GL EQUIPMENT PLUS:

18" Alloy Wheels
 Leather-wrapped Steering Wheel and Gear Shift Knob
 Power Glass Sunroof with One-touch Open
 Rear Spoiler
 Cloth Seats with Leather Bolster
 Driver's 8-way Power-adjustable Seat with Power-adjustable Lumbar Support
 Electro-chromic Auto-dimming Rearview Mirror with Compass
 Optional: On Demand All-wheel Drive System

3.5L LIMITED INCLUDES 3.5L GL EQUIPMENT PLUS:

Air Conditioning with Dual-zone Automatic Temperature Controls and CleanAir Ionizer
 All-wheel Drive
 Automatic Light Control
 Body Colour Door and Rear Liftgate Handles with Chrome Inserts
 Cargo Area 115-Volt Outlet
 Deluxe Door Sill Scuff Plate – Metal Grain with Santa Fe Imprint
 HomeLink[®] Transceiver
 Infinity[®] Logic 7[®] AM/FM/XM[®]/6-CD Changer/MP3 10-speaker Audio System
 4-way Power-adjustable Passenger Seat
 Leather Seats

3.5L LIMITED WITH NAV INCLUDES 3.5L LIMITED EQUIPMENT PLUS:

Premium AM/FM/XM[®]/CD/MP3 Audio System with Subwoofer and Amplifier
 High-resolution Touch Screen Navigation System⁴
 Rearview Camera

MECHANICAL

		2.4L GL	2.4L GL PREMIUM	3.5L GL	3.5L GL SPORT	3.5L LIMITED	3.5L LIMITED WITH NAV
Engine Type	16-valve, DOHC, I4 with Dual Continuously Variable Valve Timing (D-CVVT)	S	S	-	-	-	-
	24-valve, DOHC, V6 with Dual Continuously Variable Valve Timing (D-CVVT)	-	-	S	S	S	S
Displacement	2.4L (2,359cc)	S	S	-	-	-	-
	3.5L (3,470cc)	-	-	S	S	S	S
Bore & Stroke (mm)	88 mm x 97 mm	S	S	-	-	-	-
	92 mm x 87 mm	-	-	S	S	S	S
Compression Ratio	10.5:1	S	S	-	-	-	-
	10.6:1	-	-	S	S	S	S
Horsepower @ RPM	175 @ 6,000 RPM	-	-	S	S	-	-
	276 @ 6,300 RPM	-	-	S	S	S	S
Torque (lb-ft) @ RPM	169 lb-ft @ 3,750 RPM	S	S	-	-	-	-
	248 lb-ft @ 5,000 RPM	-	-	S	S	S	S
Exhaust	Two Side by Side	S	S	S	S	S	S
Variable Intake System (VIS)		S	S	S	S	S	S
Maximum Towing Capacity (kg)	with Trailer Brake: 907	S	S	-	-	-	-
	1,587	-	-	S	S	S	S
	without Trailer Brake: 749	S	S	S	S	S	S

TRANSMISSION AND DRIVE SYSTEM

6-speed Manual		S	-	-	-	-	-
6-speed Automatic w/ OD Lock-up Torque Converter SHIFTRONIC [®] (A/T only)		0	S	S	S	S	S
Drive Configuration	FWD	0	S	S	S	-	-
	AWD	-	0	0	0	S	S
Brakes	Front: Ventilated Disc, Single Piston	S	S	S	S	S	S
	Rear: Solid Disc, Single Piston	S	S	S	S	S	S
	ABS with Electronic Brake-force Distribution (EBD) and Brake Assist (BA)	S	S	S	S	S	S
Battery	54 AH	S	S	S	S	S	S
Alternator	13.5V/110A	S	S	-	-	-	-
	13.5V/150A	-	-	S	S	S	S
Ignition	Electronic/Distributorless	S	S	S	S	S	S
Frame Construction	Unitized Body	S	S	S	S	S	S
Suspension	Front: Twin-tube Gas-filled MacPherson Struts with Stabilizer Bar	S	S	S	S	S	S
	Rear: Multi-link with Stabilizer Bar and Gas Shock Absorbers	S	S	S	S	S	S
Tires	P235/65R17	S	-	S	-	-	-
	P235/60R18	-	S	-	S	S	S
Wheels (Aluminum Alloy)	17" x 7"	S	-	S	-	-	-
	18" x 7"	-	S	-	S	S	S

EXTERIOR

Antenna	Micro, Roof-mounted	S	S	S	S	S	S
Body Side Moulding	Dark Grey	S	S	S	S	S	S
Bumpers (Front/Rear)	Body Colour	S	S	S	S	S	S
Defroster	Rear Window, Electronic with Timer	S	S	S	S	S	S
Fog Lights	Front	-	S	-	S	S	S
Glass	Tinted	S	S	S	S	S	S
	Rear Windows, Privacy	S	S	S	S	S	S
Handles	Door and Liftgate, Body Colour	S	S	S	S	-	-
	Door and Liftgate, Body Colour with Chrome Inserts	-	-	-	-	S	S

		2.4L GL	2.4L GL PREMIUM	3.5L GL	3.5L GL SPORT	3.5L LIMITED	3.5L LIMITED WITH NAV
EXTERIOR (CONTINUED)							
Headlights	Projector-beam	S	S	S	S	S	S
	Auto Light Control	-	-	-	-	S	S
Mirrors	Body Colour, Power-adjustable, Heated with Timer	S	S	S	S	S	S
Rear Spoiler		-	-	S	S	S	S
Roof-rack Side Rails		S	S	S	S	S	S
Sunroof	Power Tilt-and-slide One-touch Open	-	S	-	S	S	S
Wiper De-icer	Front Windshield	S	S	S	S	S	S
INTERIOR							
Air Conditioning	Manual Temperature Control	S	S	S	S	-	-
	Dual-zone Automatic Temperature Controls with CleanAir Ionizer	-	-	-	-	S	S
	2nd-row HVAC Vents (B Pillar-mounted)	S	S	S	S	S	S
Audio Systems	AM/FM/XM®/CD/MP3 with 6 Speakers	S	S	S	S	-	-
	Infinity® Logic 7® AM/FM/XM®/6-CD Changer/MP3 10-speaker Audio System with 11-channel, 605-watt Infinity® External Amplifier	-	-	-	-	S	-
	Premium AM/FM/XM®/CD/MP3 with Subwoofer and 360-watt External Amplifier	-	-	-	-	-	S
Navigation System [‡] with 6.5" High-resolution Screen		-	-	-	-	-	S
iPod®/USB and Aux. Input Plug		S	S	S	S	S	S
Bluetooth® Hands Free [‡] Phone System		S	S	S	S	S	S
Console	Centre Armrest with Storage and Illuminated Cupholders	S	S	S	S	S	S
Cruise Control	Steering Wheel-mounted	S	S	S	S	S	S
Cupholders	Front Centre Console (2), Rear Centre Armrest (2), Doors (4)	S	S	S	S	S	S
DC Power Outlet	(12V) Centre Stack-mounted (2), Rear of Centre Console (1), Rear Cargo Area (1)	S	S	S	S	S	S
Door Trim	Cloth with Map Pocket	S	S	S	S	-	-
	Simulated Leather with Map Pocket	-	-	-	-	S	S
Gauges	Speedometer, Temperature, Fuel, Tachometer, Odometer, Trip Odometer	S	S	S	S	S	S
Illumination	Map Lights, Central Dome with Delay, Glove Box, Hazard, Ignition Key Cylinder Surround	S	S	S	S	S	S
Mirrors	Rearview, Manual Day/Night	S	S	S	-	-	-
	Electro-chromic Auto-dimming Mirror with Compass	-	-	-	S	S	S
	Integrated HomeLink® Transceiver	-	-	-	-	S	S
Power Door Locks	Auto-locking Feature Enabled by Dealer	S	S	S	S	S	S
Power Windows	With Driver's Auto Up/Down	S	S	S	S	S	S
Scuff Plates	Door Sill, Deluxe (Metal Grain*)	S	S	S	S	S*	S*
Seats (Front)	Multi-adjustable Bucket Seats	S	S	S	S	S	S
	Driver's Seat Manual-adjustable with Lumbar Support	S	S	S	-	-	-
	Driver's Seat 8-way Power-adjustable with Lumbar Support	-	-	-	S	S	S
	Front Passenger 4-way Power-adjustable	-	-	-	-	S	S
	Heated Front Seats	-	S	S	S	S	S
Seats (2nd Row)	60/40 Split Bench	S	S	S	S	S	S
Seat Trim	Cloth	S	S	S	-	-	-
	Cloth with Leather Bolster	-	-	-	S	-	-
	Leather	-	-	-	-	S	S
Steering Wheel	Tilting	S	S	S	S	S	S
	Telescoping	S	S	S	S	S	S

INTERIOR (CONTINUED)

		2.4L GL	2.4L GL PREMIUM	3.5L GL	3.5L GL SPORT	3.5L LIMITED	3.5L LIMITED WITH NAV
Steering Wheel	Leather-wrapped	-	-	-	S	S	S
	Steering Wheel-mounted Audio Controls	S	S	S	S	S	S
Trip Computer		-	S	S	S	S	S
SAFETY							
Airbags ¹	Dual Front	S	S	S	S	S	S
	Front Seat-mounted Side-impact	S	S	S	S	S	S
	Roof-mounted Side-curtain Airbags with Roll-over Sensor	S	S	S	S	S	S
Active Front Head Restraints		S	S	S	S	S	S
Alarm System	Anti-theft System Integrated with Remote Keyless Entry	S	S	S	S	S	S
Brakes	Anti-lock Braking System (ABS) with Electronic Brake-force Distribution (EBD) and Brake Assist (BA)	S	S	S	S	S	S
Child Safety	Child-proof Rear Door Locks	S	S	S	S	S	S
	Child-seat LATCH System	S	S	S	S	S	S
Crumple Zones	Front and Rear	S	S	S	S	S	S
Door Locks	Remote Keyless Entry with Alarm	S	S	S	S	S	S
Electronic Stability Control (ESC) with Traction Control System (TCS) ²		S	S	S	S	S	S
Ignition Immobilization System**		S	S	S	S	S	S
Power Window Lock-out Button		S	S	S	S	S	S
Rearview Camera		-	-	-	-	-	S
Restraint Systems	Front: Adjustable Shoulder Belt Height	S	S	S	S	S	S
	Seatbelt Pretensioners, Force Limiters	S	S	S	S	S	S
	2nd Row: 3-point Seatbelts (all positions)	S	S	S	S	S	S

DIMENSIONS

	Exterior (mm)	Interior (mm)	1st Row	2nd Row
Wheelbase	2,700	Head Room	1,021	1,005
Length	4,676	Leg Room	1,082	934
Height	1,725	Hip Room	1,417	1,397
Width	1,890	Shoulder Room	1,511	1,488
Tread Width (Front/Rear)	1,615/1,620			
Turning Diameter (m)	10.79			
Turns, Lock-to-lock	3.02			
Fuel Tank (L)	68			

FUEL CONSUMPTION ESTIMATES (L/100KM)[^]

	FWD	AWD
2.4L 6-speed Manual Transmission (CITY/HWY)	11.0/7.7	-
2.4L 6-speed Automatic Transmission (CITY/HWY)	10.4/7.2	10.6/8.0
3.5L 6-speed Automatic Transmission (CITY/HWY)	10.2/7.6	10.6/7.7

STANDARD WARRANTY

Coverage	One of Canada's best warranties
	5-year/100,000 km Comprehensive Limited Warranty [†]
	5-year/100,000 km Powertrain Warranty
	3-year/Unlimited km Roadside Assistance Program ^{††}

S = Standard O = Optional -- = Not Available



012SA-L600

MORE OF WHAT YOU WANT.

The midsize CUV that has it all. Strap in and relax with the 2012 Santa Fe. Luxurious comforts, plenty of space, refined style and safety features that raise the standard in its class, the 2012 Santa Fe really has it all.

hyundaicanada.com

TMThe Hyundai names, logos, product names, feature names, images and slogans are trademarks owned by Hyundai Auto Canada Corp. Specifications, features, illustrations, accessories, materials and equipment and all other information shown in this brochure are based on the latest information available at the time of publication. Although descriptions are believed to be correct, accuracy cannot be guaranteed. Hyundai Auto Canada Corp. reserves the right to make any changes or modifications at any time, without notice or obligation, including, without limitation, in colour, specifications, features, accessories, materials, equipment and models. Some vehicles are shown with optional equipment. All Hyundai warranties have no deductible. ^AFuel economy figures are based on manufacturer's testing and are used for comparison purposes only. Actual fuel efficiency may vary based on driving conditions and the addition of certain vehicle accessories. ^BHyundai's Comprehensive Limited Warranty coverage covers most vehicle components against defects in workmanship under normal use and maintenance conditions. ^CIncludes fuel delivery service, flat tire changing, lock-out service, towing service and more. Just one toll-free call away, 24 hours a day. ^DThe Supplemental Restraint (Airbag) System (SRS) is designed to work with the 3-point seatbelt system. The SRS deploys in certain frontal and/or side-impact conditions where significant injury is likely. The SRS is not a substitute for seatbelts, which must still be worn at all times. Children under the age of 13 should be securely restrained in the rear seat. NEVER place a child-seat in the front seat of a Hyundai vehicle. ^EElectronic Stability Control (ESC) and Traction Control System (TCS) are meant to enhance conscientious driving habits and are not a substitute for safe driving practices. ^FCAN/ULC S338-98 compliant immobilizer may reduce insurance costs in some instances. ^GWhen equipped with optional navigation package, Bluetooth® Hands Free and the navigation system only recognize English voice commands. iPod® is a registered trademark of Apple, Inc. The XM® name and logos are registered trademarks of XM Satellite Radio Inc. and any use of such marks by Hyundai is under license. iPod® cable sold separately.