



2012 TUCSON

2012 TUCSON

A bold statement in style.

Hyundai's compact CUV, the 2012 Tucson, enters with a modern design that instantly sets it apart as the most distinctive, visually appealing vehicle in its class. The first design to be conceived and engineered at Hyundai's new design centre in Frankfurt, Germany, the Tucson makes a bold statement about itself and those who drive it. With sleek, modern styling and highly efficient drivetrains, we've done no less than change the game for CUVs. Explore the 2012 Tucson today.



AN ANTIDOTE TO BORING DESIGN.

The 2012 Tucson is an exhilarating exercise in design. Its fluidic, assertive, sporty lines stem from a deliberate desire to set it apart in a world of me too CUVs. A sleek window line begins at the side view mirrors, rising back to meet the line of the roof extending rear spoiler. Sculptured hood creases reach down from the steeply raked windshield (for lowered cabin noise) to the hexagonal grille, then stretch back through the double set shoulder lines, extending from headlight to tail light. Styling details, such as the roof mounted antenna, wrap-around tail lights and side sill moulding, complete the overall impression of an athletic, lean, solid performer.





A LOOK THAT INSPIRES ADVENTURE.

When you've raised the bar so high on exterior design, you know the 2012 Tucson's interior will be something special. Again, design and style are paramount, from the bold 4 spoke steering wheel and X design dashboard up front, drawing lines from the driver and passenger sides through the centre stack controls, to the spacious 728 litres of cargo space at back. Tucson's intelligent design is safer, too. A solid, organ style accelerator pedal improves comfort and ensures that nothing can get beneath it, while available steering wheel audio controls let you control the music without taking your hands off the wheel. A convenient one touch triple turn signal makes it easier to alert other drivers during lane changes and in parking lots.



A NEW STANDARD IN EFFICIENCY.

The 2012 Tucson's performance and efficiency are no less revolutionary than its design. The Tucson comes equipped with either a 2.0L (165 HP) or 2.4L (176 HP) 4-cylinder engine, both maximizing power while providing impressive fuel efficiency. What's more, the engines are mated to a 5-speed manual transmission (standard on L) or an optional 6-speed automatic with SHIFTRONIC®. And Tucson's standard Eco-Indicator (MT) and Active-ECO System (AT) helps you increase your own efficiency by suggesting optimum shift points (MT) and tuning engine and transmission performance for maximum fuel economy (AT).



DON'T TAKE CHANCES WITH SAFETY.

The 2012 Tucson's standard safety features are proof of Hyundai's commitment to putting you first. Hyundai's innovative Hillstart Assist Control – to minimize backroll on steep ascents – and Downhill Brake Control – to maintain vehicle control and speed on steep descents – both give you greater control and safety and come standard on every Tucson. Also standard is an Anti-lock Braking System with Electronic Brake-force Distribution and Brake Assist plus Vehicle Stability Management, Electronic Stability Control and Traction Control System² – technologies that help you control the vehicle in adverse conditions.



2012 TUCSON



Add Allure with Alloys. The 2012 Tucson L & GL come standard with 17" steel wheels and attractive metallic covers. For a sportier look, 17" 10-spoke alloys are standard equipment on the GLS, with aggressive 18" 10-spoke alloys standard on Limited models.



Responsive Handling and Ride. The Tucson was designed in Europe and its handling and suspension show their heritage. Motor-driven power steering provides responsive handling and fuel savings, while the independent suspension offers agility and a precise ride.



Airbag Protection All Around. Every Tucson is equipped with six airbags, including dual front airbags,¹ dual front seat-mounted side-impact airbags, and two side-curtain airbags for front and outboard rear passengers which are equipped with rollover sensors to ensure they remain inflated during a rollover.



Active Head Restraints. Standard on the Tucson are front active head restraints. In the event of a rear end collision, the restraints move forward before your head moves back, providing added protection against whiplash. As well, adjustable head restraints and 3-point seatbelts are standard on all seating positions.



Convenient Touch-Screen Navigation. Get where you're going with concise maps and directions thanks to an available touch-screen navigation system² with rear-view camera. This 6.5" high-resolution LCD system helps you find your way, while making it safer and easier to back up (Limited with Nav. model).



Let the Sun Shine In. Catch the rays or shooting stars with Tucson's panoramic sunroof (standard on Limited models). It features a fixed glass roof section at back and a traditional pop-up/slide section at front, with UV blocking all over.



The Safety of Bluetooth[®] Hands Free³. The 2012 Tucson helps you make safer driving a priority with available Bluetooth[®] Hands Free³ Phone System and steering wheel-mounted Bluetooth[®] controls.

ELEVATE YOUR RIDE.

From stylish exterior to high tech interior, it's the details of the 2012 Tucson that draw the attention. To say nothing of the available seven beautiful exterior finishes, the latest in technological devices inside will let you experience the convenience and pleasure just like you do in everyday life. Let yourself welcome the opportunity to make the 2012 Tucson uniquely yours.

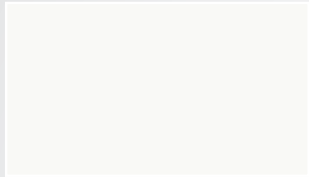
**5 YEAR
WARRANTY**

**100,000 KM
COMPREHENSIVE LIMITED WARRANTY⁴**

5-year/100,000 km Comprehensive Limited Warranty
5-year/100,000 km Powertrain Warranty
5-year/100,000 km Emission Warranty
3 year Unlimited km Roadside Assistance



EXTERIOR



Cotton White

A C E



Graphite Grey

A C E



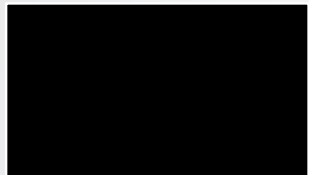
Garnet Red

B D F



Chai Bronze

A C E



Ash Black

A C E



Iris Blue

A C E



Diamond Silver

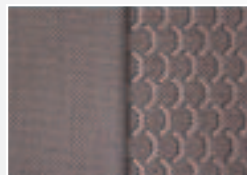
A C E

INTERIOR



Black Cloth

A



Taupe Cloth

B



Black Cloth/Leather

C



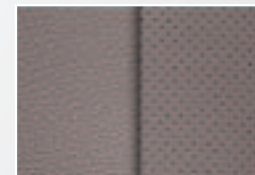
Taupe Cloth/Leather

D



Black Leather

E



Taupe Leather

F

Choice of interior colour depends upon exterior colour selection. Due to print production processes, the colours shown throughout this brochure may vary slightly from the actual hue. See your dealer for model applications and to view the Hyundai Colour Selector. Visit hyundaicanada.com or see dealer for details.

ACCESSORIES



RUBBER FLOOR MATS. Protect the interior of your Hyundai from everyday dirt and debris with custom-made floor mats. Remove carpet mats prior to installation.



TRAILER HITCH KIT. Designed to meet all your towing needs, a Hyundai hitch can accommodate a wide variety of hitch-mounted accessories. Kit includes the trailer hitch, ball mount and end cap. Chrome ball shown not included.



SIDE VISORS. Sleek and sporty, these side visors let you enjoy fresh air even when it's raining.



RUNNING BOARDS. Getting in and out of your vehicle is easy with a set of durable running boards.



ROOF RACKS. This durable, quick-locking roof rack system lets you transport cargo easily, without sacrificing interior room. Remove when not in use.



FRONT & REAR BUMPER GUARD KIT. Give your Tucson that "finished" look with highly-polished, stainless steel bumper guards.



MUD GUARDS. Custom-fit mud guards keep the dirt and debris of everyday driving where it belongs.



SIDE STEPS. Stylish and functional, polished stainless steel side steps will add a rugged look to your vehicle.



PLASTIC HOOD PROTECTOR. Prevent dents and scratches caused by road and vehicle debris with an attractive plastic hood protector.



CARGO TRAY. Add years to the interior of your Hyundai by protecting it from spills and messy loads with a durable, custom-fit cargo tray.

L STANDARD EQUIPMENT INCLUDES:

17" Steel Wheels with Covers
 2.0L Theta II 165 hp 16-valve DOHC 4-cylinder Engine with Dual Continuously Variable Valve Timing (CVVT)
 4-wheel Disc Brakes
 5-speed Manual Transmission
 60/40 Split Fold-down Rear Seatback with Adjustable Headrests
 Air Conditioning with Manual Temperature Controls
 Airbags¹: Dual Front Airbags, 2 Seat-mounted Side-impact, 2 Roof-mounted Side Curtains with Rollover Sensor
 AM/FM/CD/MP3/AUX/USB/iPod® Plug Audio System with Six Speakers
 Anti-lock Braking System (ABS) with Electronic Brake-force Distribution (EBD) and Brake Assist (BA)
 Cloth Seats
 Downhill Brake Control (DBC) and Hillstart Assist Control (HAC)
 Power Windows with Driver's Auto-down
 Rear Spoiler
 Rear Window Washer/Wiper
 Optional: 6-speed Automatic Transmission with Remote Keyless Entry with Alarm

GL INCLUDES TUCSON L STANDARD EQUIPMENT PLUS:

2.4L Theta II 176 hp 16-valve DOHC 4-cylinder Engine with Dual Continuously Variable Valve Timing (CVVT)
 6-speed Automatic Transmission with OD Lockup Torque Converter with SHIFTRONIC® Manual Shift Mode
 Cruise Control
 Bluetooth® Hands Free⁹ Phone System
 Heated Front Seats
 Remote Keyless Entry with Alarm
 Steering Wheel-mounted Audio Controls
 Optional: All-wheel Drive

GLS INCLUDES TUCSON GL STANDARD EQUIPMENT PLUS:

17" 10-spoke Aluminum Alloy Wheels
 AM/FM/XM®/CD/MP3/AUX/USB/iPod® Plug Audio System with Six Speakers
 Body Colour, Exterior Mirrors and Door Handles
 Cloth Seats with Leatherette Bolsters
 Fog Lights and Windshield Wiper De-icer
 Leather Wrapped Telescopic Steering Wheel
 Roof Rails and Rear Privacy Glass
 Optional: All-wheel drive

LIMITED INCLUDES TUCSON GLS STANDARD EQUIPMENT PLUS:

18" 10-spoke Aluminum Alloy Wheels
 Air Conditioning with Dual-zone Automatic Temperature Controls and Cleanair Ionizer
 All-wheel Drive
 Automatic Light Control
 Chrome Door Handles
 Chrome-accented Grille with Black Lower Air Intake
 Driver's Power-adjustable Seat with Lumbar Support and Leather Seats
 Electro-chromic Auto-dimming Rearview Mirror with HomeLink®
 Exterior Mirror Integrated Side Repeaters
 Outside Temperature Display
 Panoramic Sunroof
 Power Windows with Driver Auto-up/down with Pinch Protection
 Solar Control Glass
 Excludes: Roof Rails

LIMITED W/ NAV INCLUDES TUCSON LIMITED STANDARD EQUIPMENT PLUS:

AM/FM/XM®/CD/MP3/AUX/USB/iPod® Plug Audio System with Amplifier and Subwoofer
 High-resolution Touch-screen Navigation System⁹
 Rearview Camera

MECHANICAL

		L	GL	GLS	LIMITED	LIMITED WITH NAV
Engine Type	In-line 4-cylinder with 16-valve DOHC and Dual CVVT	S	S	S	S	S
Displacement	2.0L (1,988 cc)	S	-	-	-	-
	2.4L (2,359 cc)	-	S	S	S	S
Bore and Stroke (mm)	86.0 x 86.0	S	-	-	-	-
	88.0 x 97.0	-	S	S	S	S
Horsepower @ RPM	165 @ 6,200	S	-	-	-	-
	176 @ 6,000	-	S	S	S	S
Torque (lb-ft) @ RPM	146 @ 4,600	S	-	-	-	-
	168 @ 4,000	-	S	S	S	S
Drivetrain	FWD	S	S	S	-	-
	AWD	-	0	0	S	S
Transmission	5-speed Manual	S	-	-	-	-
	6-speed Automatic	0	S	S	S	S
Active ECO switch		0	S	S	S	S
Exhaust	Single	S	S	S	S	S
Brakes	Front: Power-assisted Ventilated Discs	S	S	S	S	S
	Rear: Power-assisted Solid Discs	S	S	S	S	S
	Anti-lock Braking System (ABS) with Electronic Brake Force Distribution (EBD) and Brake Assist (BA)	S	S	S	S	S
Suspension	Front: MacPherson Struts with Coil Springs and Stabilizer Bar (Amplitude Selective Damper ¹)	S	S	S	S*	S*
	Rear: Multi-link with Stabilizer Bar and Gas Shock Absorbers (ASD ¹)	S	S	S	S*	S*
Chassis	Unibody	S	S	S	S	S
Tires	P225/60R17	S	S	S	-	-
	P225/55R18	-	-	-	S	S
Steering	Motor-driven Power Steering	S	S	S	S	S
Wheels	17" x 6.5J Steel with Wheel Cover	S	S	-	-	-
	17" x 6.5J Aluminum Alloy	-	-	S	-	-
	18" x 6.5J Aluminum Alloy	-	-	-	S	S
Electrical System	Battery 12V, 54AH	S	S	S	S	S
Turning Diameter	10.58	S	S	S	S	S

EXTERIOR

Antenna	Roof-mounted with AM/FM Reception	S	S	-	-	-
	Roof-mounted with AM/FM/XM® Reception	-	-	S	S	S
Fog Lights		-	-	S	S	S
Front Grille	Black/Body Colour	S	S	S	-	-
	Black/Body Colour with Chrome Accents	-	-	-	S	S
Glass	Tinted	S	S	S	-	-
Privacy Glass	Rear/Quarter/Back	-	-	-	S	S
Solar Control Glass	Front Door and Windshield	-	-	-	S	S
Headlights	Multi-reflector with Escort Feature	S	S	S	S	S
	Automatic Light Control	-	-	-	S	S
Outside Mirrors	Black, Dual Power-adjustable, Heated with Timer	S	S	-	-	-
	Body Colour, Dual Power-adjustable, Heated with Timer	-	-	S	S	S
Panoramic Sunroof	One-touch Open with Dual Shade	-	-	-	S	S
Rear Spoiler	Integrated with HMSL, Body Colour	S	S	S	S	S
Roof Rails		-	-	S	-	-
Windshield Sunshade Band		S	S	S	S	S
Wipers	Front 2-speed/Variable Intermittent	S	S	S	S	S
	Front Window Wiper De-icer	-	-	S	S	S
	Rear Wiper/Washer	S	S	S	S	S

		L	GL	GLS	LIMITED	LIMITED WITH NAV
INTERIOR						
Air Conditioning	Manual Temperature Control	S	S	S	-	-
	Dual-zone Fully Automatic with Cleanair Ionizer	-	-	-	S	S
Audio System	AM/FM/CD/MP3/AUX/USB/iPod® Plug with Six Speakers	S	S	-	-	-
	AM/FM/XM®/CD/MP3/AUX/USB/iPod® Plug with Six Speakers	-	-	S	S	-
	AM/FM/XM®/CD/MP3/AUX/USB/iPod® Plug with Amplifier and Subwoofer	-	-	-	-	S
Bluetooth® Hands Free ⁹ Phone System		-	S	S	S	S
Carpet	Carpet Deluxe Cut-pile	S	S	S	S	S
Clock	Digital	S	S	S	S	S
Console	Overhead Sunglass Storage	S	S	S	S	S
	Fixed Armrest Storage Box	S	S	S	S	S
Cruise Control		-	S	S	S	S
Cupholders	Dual Front Centre Console-mounted	S	S	S	S	S
DC Power Outlet (12V)	Front Centre Console (2), Rear Cargo Area (1)	S	S	S	S	S
Defogger	Front Side Windows	S	S	S	S	S
Defroster	Rear Window, Electronic with Timer	S	S	S	S	S
Door Trim	PVC	S	S	-	-	-
	Artificial Leather	-	-	S	S	S
Gauges	Speedometer, Tachometer, Trip Odometer, Fuel, Coolant Temp.	S	S	S	S	S
Glove Box	Lockable, Illuminated*	S	S	S*	S*	S*
Illumination	Map Lights, Glove Box*, Overhead Centre Light	S	S	S*	S*	S*
Mirrors	Driver and Front Passenger Vanity (illuminated*)	S	S	S*	S*	S*
	Inside Rearview, Manual Day/Night	S	S	S	S	S
Navigation System ⁹	6.5" High-resolution Touch-screen Display with Rearview Camera	-	-	-	-	S
Outside Temperature Display		-	-	-	S	S
Power Door Locks		S	S	S	S	S
Power Windows	Driver's Auto-down	S	S	S	-	-
	Driver's Auto-up/down with Pinch Protection	-	-	-	S	S
Rear Centre Armrest with Dual Cupholders		S	S	S	S	S
Remote Releases	Fuel Filler Door	S	S	S	S	S
	Hood	S	S	S	S	S
Room Lamp Auto Cut-off		S	S	S	S	S
Seats	Front Buckets with Adjustable Active Head Restraints	S	S	S	S	S
	Driver's 6-way Adjustable	S	S	S	-	-
	Driver's 8-way Power-adjustable with Power Lumbar Support	-	-	-	S	S
	60/40 Split Fold-down Rear Seatback with Adjustable Head Restraints	S	S	S	S	S
	Heated Front Seats	-	S	S	S	S
	Seatback Pockets	S	S	S	S	S
Seat trim	Cloth	S	S	S	-	-
	Cloth Insert with Leatherette Bolster	-	-	S	-	-
	Leather Seating Surfaces	-	-	-	S	S
Steering Wheel	Mounted Audio and Bluetooth® Handsfree ⁹ Controls	-	S	S	S	S
	Leather-wrapped	-	-	S	S	S
	Tilting	S	S	S	S	S
	Telescoping	-	-	S	S	S
Trip Computer		S	S	S	S	S

		L	GL	GLS	LIMITED	LIMITED WITH NAV
SAFETY						
Active Head Restraints	Front Seats	S	S	S	S	S
Airbags ¹	Advanced Driver and Front Passenger	S	S	S	S	S
	Occupancy Classification Sensor (OCS)	S	S	S	S	S
	Driver and Front Passenger Side-impact (Thorax)	S	S	S	S	S
	Side Air Curtains (Front and Rear with Rollover Sensors)	S	S	S	S	S
Alarm System		0	S	S	S	S
Assist Grips	Four	S	S	S	S	S
Brakes	Anti-lock Braking System (ABS) with Electronic Brake-force Distribution (EBD) and Brake Assist (BA)	S	S	S	S	S
Child Safety	Child-proof Rear Door Locks	S	S	S	S	S
	Child-seat LATCH System	S	S	S	S	S
Door Locks	Remote Keyless Entry with Alarm and Panic	0	S	S	S	S
Electronic Stability Control (ESC) with Traction Control System (TCS) ² & Vehicle Stability Management		S	S	S	S	S
Ignition Immobilization System**		S	S	S	S	S
Restraint Systems	Front: 3-point Seatbelt with Adjustable Shoulder Belt Height	S	S	S	S	S
	Rear: 3-point Seatbelt	S	S	S	S	S
Steering Column	Energy-absorbing	S	S	S	S	S
Steering Wheel Lock	When Key is Removed	S	S	S	S	S
Warning Lights	Door Ajar, Liftgate Ajar, ABS, ESC Off, Oil Pressure, Charging System, EPS	S	S	S	S	S
	Low Fuel, Airbag (SRS), Check Engine, Immobilizer, Seatbelt	S	S	S	S	S

DIMENSIONS (MM)	
Length	4,400
Width (excludes mirrors)	1,820
Height (without/with Roof Rails)	1,655/1,685
Wheelbase	2,640
Track Width (Front/Rear)	1,591/1,592
Head Room (Front/Rear)	1,000/994
Leg Room (Front/Rear)	1,047/982
Shoulder Room (Front/Rear)	1,450/1,400
Hip Room (Front/Rear)	1,410/1,356
Curb Weight (kg)	5-speed Manual Transmission (FWD) (2.0L) 1,424
	6-speed Automatic Transmission (FWD) (2.0L) 1,440
	6-speed Automatic Transmission (FWD/AWD) (2.4L) 1,452-1,505/1,529-1,582
Towing Capacity (kg)	With Trailer Brake: 907
	Without Trailer Brake: 454
Fuel Tank Capacity (L)	58

FUEL CONSUMPTION RATING*		City/Highway (L/100KM)
5-speed Manual Transmission (FWD)		(2.0L) 10.1/7.4
6-speed Automatic Transmission (FWD)		(2.0L) 9.1/6.5
6-speed Automatic Transmission (FWD)		(2.4L) 9.4/6.2
6-speed Automatic Transmission (AWD)		(2.4L) 10.0/7.1

S = Standard O = Optional - = Not Available

WONDER NO MORE.

You can ask yourself how it manages to include everything you need. You can ask yourself how it blends style and economy so well. But really, there's no need to question. Just take a seat and enjoy.

hyundaicanada.com



Specifications, features, illustrations, accessories, materials and equipment and all other information shown in this brochure are based on the latest information available at the time of publication. Although descriptions are believed to be correct, accuracy cannot be guaranteed. Hyundai Auto Canada Corp. reserves the right to make any changes or modifications at any time, without notice or obligation, including, without limitation, in colour, specifications, features, accessories, materials, equipment and models. Some vehicles are shown with optional equipment. All Hyundai warranties have no deductible. [^]Fuel economy figures are based on manufacturer's testing and are used for comparison purposes only. Actual fuel efficiency may vary based on driving conditions and the addition of certain vehicle accessories. [†]Hyundai's Comprehensive Limited Warranty coverage covers most vehicle components against defects in workmanship under normal use and maintenance conditions. ^{**}Includes fuel delivery service, flat tire changing, lock-out service, towing service and more. Just one toll-free call away. 24 hours a day. [‡]The Supplemental Restraint (Airbag) System (SRS) is designed to work with the 3-point seatbelt system. The SRS deploys in certain frontal and/or side-impact conditions where significant injury is likely. The SRS is not a substitute for seatbelts, which must still be worn at all times. Children under the age of 13 should be securely restrained in the rear seat. NEVER place a child-seat in the front seat of a Hyundai vehicle. [§]Electronic Stability Control (ESC) and Traction Control System (TCS) are meant to enhance conscientious driving habits and are not a substitute for safe driving practices. [¶]CAN/ULC S338-98 compliant immobilizer may reduce insurance costs in some instances. [™]The Hyundai name, logo, product names, feature names, images and slogans are trade marks owned by Hyundai Auto Canada Corp. ^{¶¶}When equipped with optional navigation package, Bluetooth® hands free and the navigation system only recognize English voice commands. Bluetooth® word mark and logos are registered trademarks owned by Bluetooth SIG, Inc., and any use of such marks by Hyundai is under license.