



2012 LANCER SPORTBACK

**SPORTRONIC STEERING WHEEL
MAGNESIUM-ALLOY PADDLE SHIFTERS (CVT)**
Lightweight, racing-inspired magnesium paddle shifters offer real hands-on performance. Pull the right paddle to upshift the Continuously Variable Transmission (CVT) and the left paddle to downshift.



WELL EQUIPPED VERSATILITY

LIVELY, POISED AND FUN TO DRIVE, THE 2012 LANCER SPORTBACK BLENDS SUPERB PERFORMANCE AND FUNCTIONAL UTILITY IN A SPACIOUS, EUROPEAN STYLED 5-DOOR HATCH THAT'S SLEEK AND AERODYNAMIC. LOADED WITH ADVANCED TECHNOLOGY AND COMFORT ENHANCING CONVENIENCES, WELL-EQUIPPED VERSATILITY NEVER LOOKED SO ALLURING.

STYLE AND SUBSTANCE

With its aggressive front end and imposing jet fighter grille complimented by its smooth, flowing lines and aerodynamic grace, the 2012 Lancer Sportback strikes a commanding pose in anybody's language. Its streamlined exterior screams performance while its sporty features confirm it. Backed up by a full array of high-tech equipment like its powerful and fuel efficient MIVEC engine, available Continuously Variable Transmission (CVT) and sports-tuned suspension, the Sportback offers a drive that is both intuitive and responsive.

TRIM LEVELS

- SE** 5-DOOR HATCHBACK, 5-PASSENGER
2.0L DOHC 16-VALVE MIVEC I4, 148 HP
- GT** 5-DOOR HATCHBACK, 5-PASSENGER
2.0L DOHC 16-VALVE MIVEC I4, 148 HP

HIGH PERFORMANCE AUDIO

Redefine your sound experience with the available Rockford Fosgate® premium sound system. High-performance 6-CD/MP3 player explodes with 710 watts of power that floods the entire interior with crystal-clear sound through nine, specifically-tuned speakers. And with six months pre-paid Sirius Satellite Radio, you will have the best in audio entertainment.



The Bluetooth® word mark and logos are owned by the Bluetooth SIG, Inc., and any use of such marks by Mitsubishi is under license. SIRIUS Satellite Radio Inc. 'SIRIUS', the SIRIUS dog logo and related marks are trademarks of SIRIUS Satellite Radio, Inc.

ROOF RACK KIT

Getting away for a ski or mountain biking weekend is easily accommodated by the available roof racks that fasten to the fixed attachment points located on the car's roof. With your gear safely attached up top, the rear hatch is available to make your weekend not only adventuresome, but comfortable.



SPORTY AND FLEXIBLE

In true sporty style, the Sportback's interior echoes its outward appearance with a distinctive curving dashboard offset by slender twin cowls over a hydrographic instrument panel while its available leather-wrapped multi-function sports steering wheel and leather sport bucket seats reflect the racy ambience of a performance car. But take a closer look and its forward-mounted windscreen base and sloping hatchback create an amazing sense of space in a cabin that seats five adults in total comfort. And with its flexible cargo area that readily accommodates an active and busy lifestyle, the Sportback offers functional style in a super-sleek package.

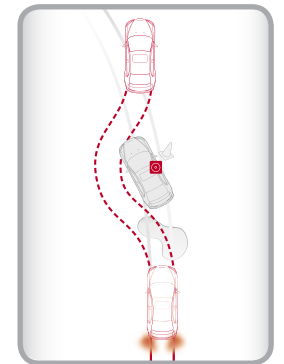
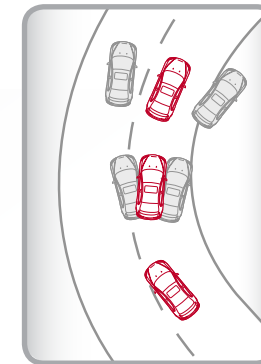
ADJUSTING EXPECTATIONS

A unique, adjustable cargo floor behind the hatch can be lowered by 90 mm (3.5") to create 433L (15.3 cu.ft.) of added flexibility for large or tall loads. For even bigger cargo or gear, simply fold down the standard 60/40 split folding rear seat, opening up an amazing 1,492L (52.7 cu.ft.) of space that will exceed your expectations.



REAR SPOILER

For that sporty, aero look, the 2012 Lancer Sportback features a standard colour-keyed rear spoiler, which adds to its aerodynamic appeal.



TIRE PRESSURE MONITORING SYSTEM

Each tire receives a sensor complete with an indicator warning on the multi-information display. It alerts you to loss of tire pressure, keeping you safe and optimizing fuel economy.



CONTINUOUSLY VARIABLE TRANSMISSION (CVT)

An available computer-controlled Continuously Variable Transmission (CVT) keeps the engine running near its optimum speed. The advanced INVECS-III control system even tailors its responses to your driving habits, allowing it to actually anticipate your every move.

ACTIVE STABILITY CONTROL WITH TRACTION CONTROL

Active Stability Control and Traction Control provide an extra measure of grip on the road, delivering sure-footed acceleration when driving on highways or backcountry roads.

* The 2012 Lancer 2WD has earned the IIHS Top Safety Pick award in the United States. The Top Safety Pick recognizes vehicles that have electronic stability control and earn the highest rating for front, side, rollover, and rear crash protection – all of which is standard on the Lancer.

OPEN WIDE

With a single touch of the cargo release lever, the Sportback's 60/40 split folding high-back rear seats with adjustable headrests, easily fold out of the way; forming an expansive stowage area to accommodate even the most exuberant shopping spree.



TRIM

SE



GT



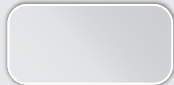
COLOURS



Tarmac Black Pearl
Black Interior¹



Titanium Grey Metallic
Black Interior¹



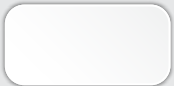
Apex Silver Metallic
Black Interior¹



Rally Red Metallic
Black Interior¹



Octane Blue Pearl
Black Interior¹



Wicked White
Black Interior¹

¹Leather standard on GT

For a complete list of features, technical specifications and options visit www.mitsubishi-motors.ca

2012 LANCER SPORTBACK

SE GT KEY FEATURES, TECHNICAL SPECIFICATIONS & OPTIONS

- | SE | GT | KEY FEATURES, TECHNICAL SPECIFICATIONS & OPTIONS |
|----|----|---|
| | | • Fog lights |
| | | • Fast-Key electronic entry and starting system |
| | | • Air conditioning – automatic climate control on GT |
| | | • Bluetooth® 2.0 hands-free cellular phone interface with streaming audio and USB input with voice control |
| | | • 140W AM/FM/CD/MP3 audio system with four speakers |
| | | • 710-watt (maximum) Rockford Fosgate® high-performance CD/MP3 player and nine speakers |
| | | • Colour LCD multi-information display showing fuel level, CVT gear selection, outside temperature, plus driver-selectable screens |
| • | • | Power glass sunroof with shade and tilt feature |
| • | • | Heated front seats |
| | | • Leather seating surfaces |
| | | • Steering wheel mounted cruise control and audio controls |
| • | • | 2.0L I4 engine, 148 hp @ 6,000 RPM/145 lb.-ft @ 4,200 RPM |
| • | • | 5-speed manual transmission |
| • | • | Continuously Variable Transmission (with Sportronic magnesium steering wheel paddle shifters for GT) |
| • | • | 4-wheel Anti-lock Brakes (ABS), Brake Assist System (BAS), Electronic Brakeforce Distribution (EBD) and Brake Override System (BOS) |
| • | | Lower front grille chrome surround |
| | | • RALLIART front bumper |
| • | • | "ECO" mode / Gear Shift change indicator |
| • | • | 7 airbags including driver knee airbag |
| • | • | Colour key rear wing spoiler |

OPTIONS

- Power Sunroof

• Standard • Package

10 YEAR
160,000 km
POWERTRAIN LTD WARRANTY**

**BEST BACKED CARS
IN THE WORLD®*****

Technical data, equipment and options shown are based on the latest information available at the time of printing and are subject to change without notice. Colours may vary due to the printing process. Exterior and interior lights on vehicles shown may be illuminated for illustration purposes only. Vehicles are shown with optional equipment or images may be international models shown. Not all equipment is available on every model. For complete details about equipment configuration and Mitsubishi Genuine Accessories, please contact your Mitsubishi Retailer. ©2011 Mitsubishi Motor Sales of Canada Inc.

** See Mitsubishi Retailer for Limited Warranty and Roadside Assistance terms and conditions.

*** Best backed claim does not cover Lancer Evolution and RALLIART models. Lancer Evolution and RALLIART models include a 5-year/100,000 km powertrain limited warranty, 3-year/60,000 km new vehicle limited warranty and 5-year/unlimited km roadside assistance.