



NEW THINKING.
NEW POSSIBILITIES.



BEAUTIFULLY
BOLDER.

Newly redesigned, the 2013 Santa Fe is a blend of sophistication, cutting-edge technologies and agility. It features premium styling, an all-new engine and luxurious comforts combined with top safety features and an array of amenities. Travel anywhere with impressive fuel economy and plenty of cargo space, making the all-new Santa Fe a leading contender in the segment.

EXTERIOR

RUGGED ELEGANCE.

The 2013 Santa Fe has been totally redesigned with a bold style known as Storm Edge. A striking hexagonal grille flanks the front while smooth flowing sheet metal creates the impression of continuous motion. LED accent lighting and available side-mirror turn signals increase visibility for added safety and an available panoramic sunroof allows more light into the cabin. The sporty yet sophisticated appearance is continued from front to back, ending with an available twin-tip chrome exhaust.

AVAILABLE HID HEADLIGHTS WITH LED ACCENT



AVAILABLE TWIN-TIP EXHAUST





AVAILABLE PANORAMIC SUNROOF



AVAILABLE COOLED FRONT SEATS



AVAILABLE 19" ALLOYS



PERFORMANCE EFFICIENTLY POWERFUL.

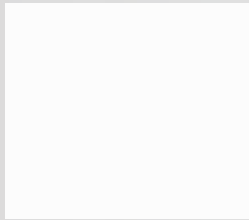
The 2013 Santa Fe gives you the choice between two powerful and fuel efficient engines. For those seeking more power, there is the all-new 2.0L Twin-scroll Turbocharged GDI engine which offers the power of a V6 without sacrificing fuel economy. Producing a powerful 264 horse-power and 269 lb-ft of torque, the engine maintains an impressively low 8.3L/100km[^] combined fuel economy. Using the latest engineering innovations, the 2.4L engine has been enhanced with Gasoline Direct Injection (GDI) technology for an improved 190 horsepower and 181 lb-ft of torque. Both are paired with a fuel efficient 6-speed automatic transmission with SHIFTRONIC.[®]

INTERIOR STEP UP INTO LUXURY.

The spacious interior of the Santa Fe offers exceptional styling with an array of upscale amenities. Driver and front passenger comfort is upgraded with standard heated front seats, available heated steering wheel, cooled front seats and generously sized panoramic sunroof. But there's more to the 2013 Santa Fe than just providing the ultimate driving environment. The Santa Fe is also designed with the luxury of versatility. Rear seating reclines and folds 40/20/40, with the available option of sliding forward, adding an impressive amount of cargo space. Rear passengers receive equal attention too, with standard rear privacy glass and available rear heated seats and rear sunshade blinds.

COLOURS

EXTERIOR



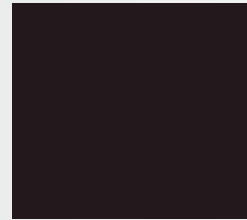
Frost White Pearl



Moonstone Silver



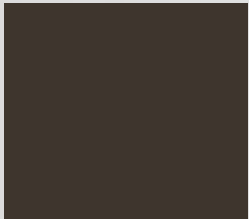
Serrano Red



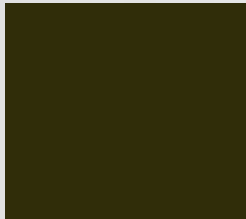
Twilight Black



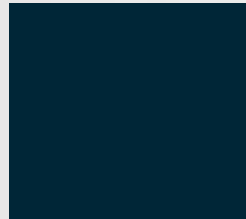
Titanium Silver



Cabo Bronze

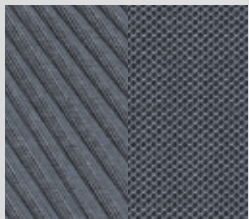


Juniper Green

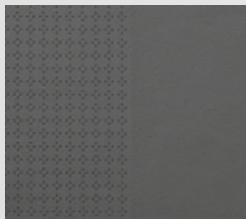


Marlin Blue

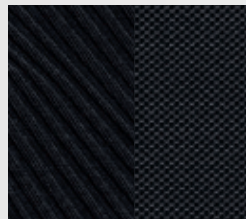
INTERIOR



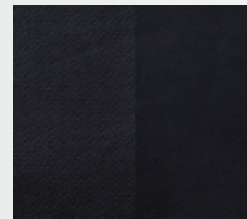
Grey Cloth*
Standard on 2.4 and 2.4 Premium



Grey Leather
Standard on 2.4 Luxury



Black Cloth*
Standard on 2.0T Premium



Black Leather
Standard on 2.0T SE and 2.0T Limited

**THERE'S NO
SUBSTITUTE
FOR PEACE
OF MIND.**

The quality of our vehicles is equally matched by the quality of our warranty. Rest assured we stand proudly and confidently behind our vehicles to give you the ultimate peace of mind with a 5 year /100,000KM comprehensive limited warranty, one of the best backed warranties in Canada. And now we also provide a Road Trip Planner service, helping you prepare worry free trips. You're covered with Hyundai.

**5 YEAR
WARRANTY**

100,000 KM
COMPREHENSIVE LIMITED WARRANTY

5-year/100,000 km
Comprehensive Limited Warranty[†]

5-year/100,000 km
Powertrain Warranty

5-year/100,000 km
Emission Warranty

3-year/100,000 km
Roadside Assistance Program^{**}

Choice of interior colour depends upon model selection. Due to print production process, the colours shown throughout this product card may vary slightly from the actual hue. See your dealer for model applications and to view the Hyundai Colour Selector. Visit hyundaicanada.com or see your dealer for details.

*Not exactly as shown.

SPECIFICATIONS

2.4 (FWD)

Standard Equipment Includes:

2.4L, 190 hp. 4-cylinder Theta II GDI Engine with Dual Continuously Variable Valve Timing ■ 17" Alloy Wheels ■ 6-speed Automatic Transmission with SHIFTRONIC® ■ 4-wheel Disc Brakes ■ Active Eco System ■ Air Conditioning with Manual Temperature Control and Second Row Vents ■ AM/FM/XM®/CD/MP3 Audio System with LCD Screen and 6 Speakers ■ iPod®/USB/Auxiliary Input Jacks ■ Anti-lock Braking System (ABS) with Electronic Brake-force Distribution (EBD) and Brake Assist (BA) ■ Electronic Stability Control (ESC) with Traction Control System (TCS)² ■ Front Windshield Wiper De-Icer ■ Bluetooth® Hands Free⁹ Phone System ■ Front Centre Console with Fixed Armrest, Storage Box and Dual Cupholders ■ Driver and Front Passenger Illuminated Vanity Mirrors ■ Airbags¹ (7): Dual Front, Front Seat-mounted Side-impact, Roof-mounted Side-curtain with Roll-over Sensor and Driver Knee Airbag

■ Heated Front Seats ■ Deluxe Cloth Seats with YES Essentials® Cloth Protection ■ 2nd Row 40/20/40 Split Fold-flat and Recline with Height Adjustable Head Restraints ■ Power Adjustable, Heated with Timer Exterior Mirrors ■ Power Windows with Driver's Auto-up/Down and Pinch Protection ■ Roof-rack Side Rails ■ Remote Keyless Entry with Alarm ■ Steering Wheel-mounted Audio and Cruise Controls ■ Fog Lights ■ Chrome Exterior Door Handles ■ Rear Spoiler ■ Tilt and Telescopic Steering Wheel ■ Trailer Tow Wiring ■ Rear Privacy Glass

2.4 PREMIUM

Includes 2.4 Standard Equipment Plus:

Automatic Headlights ■ Dual-zone Automatic Temperature Control with Clean Air Ionizer ■ 12-way Power Adjustable Driver's Seat with Lumbar Support ■ Heated Steering Wheel ■ Heated Rear Seats ■ Leather-wrapped Steering Wheel and Gear Shift Knob ■ Rear Side Window Sunshade Blinds ■ Rear Parking Assist ■ Optional: All-Wheel Drive

2.4 LUXURY

Includes 2.4 Premium Standard Equipment Plus:

All-Wheel Drive ■ 4-way Power Adjustable Passenger's Seat ■ AM/FM/CD/XM®/MP3 Audio System with 4.3" Colour Touch-screen Audio Display ■ Rearview Camera ■ Electrochromic Auto-dimming Rearview Mirror with HomeLink® and Compass ■ Leather Seating Surfaces ■ Mirror-mounted Turn Signal Indicators ■ Panoramic Sunroof ■ HID Headlights ■ Rearview Camera ■ Sliding 2nd Row Seats ■ Excludes: Roof Rack Side Rails

2.0T PREMIUM

Includes 2.4 Premium Standard Equipment Plus:

2.0L, Turbo 264 hp. 4-cylinder Theta II GDI Engine with Dual Continuously Variable Valve Timing ■ Twin Tip Exhaust ■ Proximity Key with Push-button Start ■ Supervision Cluster with TFT LCD Screen ■ Optional: All-Wheel Drive

2.0T SE

Includes 2.0T Premium Standard Equipment Plus:

19" Euroflange Alloy Wheels ■ All-Wheel Drive ■ AM/FM/CD/XM®/MP3 Audio System with 4.3" Colour Touch-screen Audio Display ■ Rearview Camera ■ Deluxe Door Scuff Plates ■ Electrochromic Auto-dimming Rearview Mirror with Compass ■ Leather Seating Surfaces ■ Mirror-mounted Turn Signal Indicators ■ Panoramic Sunroof ■ Sliding 2nd Row Seats ■ Excludes: Roof Rack Side Rails

2.0T LIMITED

Includes 2.0T SE Standard Equipment Plus:

Infinity® AM/FM/CD/XM®/MP3 Audio System with 10 Speakers ■ 4-way Power Adjustable Passenger's Seat ■ Electrochromic Auto-dimming Rearview Mirror with HomeLink® and Compass ■ HID Headlights ■ Navigation System with High Resolution 6.5" Touch-screen Display ■ Cooled Front Seats

For more detailed specifications and information please visit www.hyundaicanada.com, or visit your dealer today.

hyundaicanada.com

™The Hyundai names, logos, product names, feature names, images and slogans are trademarks owned by Hyundai Auto Canada Corp. Specifications, features, illustrations, accessories, materials and equipment and all other information shown in this brochure are based on the latest information available at the time of publication. Although descriptions are believed to be correct, accuracy cannot be guaranteed. Hyundai Auto Canada Corp. reserves the right to make any changes or modifications at any time, without notice or obligation, including, without limitation, in colour, specifications, features, accessories, materials, equipment and models. Some vehicles are shown with optional equipment. All Hyundai warranties have no deductible. [▲]Fuel economy for the 2013 Santa Fe 2.0T FWD (Hwy 6.4L/100km, City 9.8L/100km, Combined 8.3L/100km) is based on manufacturer's testing and are used for comparison purposes only. Actual fuel efficiency may vary based on driving conditions and the addition of certain vehicle accessories. ¹Hyundai's Comprehensive Limited Warranty coverage covers most vehicle components against defects in workmanship under normal use and maintenance conditions. ¹¹Includes fuel delivery service, flat tire changing, lock-out service, towing service and more. Just one toll-free call away, 24 hours a day. ¹²The Supplemental Restraint (Airbag) System (SRS) is designed to work with the 3-point seatbelt system. The SRS deploys in certain frontal and/or side-impact conditions where significant injury is likely. The SRS is not a substitute for seatbelts, which must still be worn at all times. Children under the age of 13 should be securely restrained in the rear seat. NEVER place a child-seat in the front seat of a Hyundai vehicle. ²Electronic Stability Control (ESC) and Traction Control System (TCS) are meant to enhance conscientious driving habits and are not a substitute for safe driving practices. ^{**}CAN/ULC S338-98 compliant immobilizer may reduce insurance costs in some instances. ⁹When equipped with optional navigation package, Bluetooth® Hands Free and the navigation system only recognize English voice commands. iPod® is a registered trademark of Apple, Inc. The XM® name and logos are registered trademarks of XM Satellite Radio Inc. HomeLink® is a registered trademark of Johnson Controls, Inc., Infinity® is a registered trademark of Harman International, Inc and any use of such marks by Hyundai is under license. All other trademarks are property of their respective owners.