

2013 LANCER SPORTBACK



SPORT-TUNED GETAWAYS

The 2013 Lancer Sportback 5-door hatch lets you pack a lot into your weekends. Not only will the spacious cabin secure all your favourite gear, but you'll arrive in style thanks to its sleek, European design. Built for both comfort and handling, you'll be dazzled by its intelligent automotive technology that will quicken your pulse as much as your drive. Its sporty suspension offers nimble reaction, while the available Continuously Variable Transmission (CVT) ensures smooth acceleration and maximum efficiency. And its potent MIVEC engine promises low emissions and enhanced fuel economy. Combine these innovative features with the Sportback's versatility that's wrapped in a streamlined, aerodynamic body and you'll find getting to your destination is half the fun.

▶ RALLY INSPIRED SHIFTING

Included with the available Continuously Variable Transmission (CVT) in the GT, the lightweight, Sportronic rally-inspired magnesium paddle shifters offer real hands-on performance. Pull the right paddle to upshift and the left paddle to downshift. They look cool and stay cool even in direct sunlight.





TIRE PRESSURE MONITORING SYSTEM

Tire performance contributes to fuel-efficiency and ride comfort as well as handling, stopping and turning. The Tire Pressure Monitoring System (TPMS) ensures safe operation and its network of sensors alert you with a warning light to any significant decrease in tire pressure.



CONVENIENT FAST-KEY SYSTEM

The available FAST-Key provides exceptionally easy access. When it's within less than a metre (2.5 feet), you can unlock the doors by simply pushing the button on the door handle or the hatch. The vehicle can also be started with the keys conveniently tucked away in a pocket or purse.



HIGH PERFORMANCE AUDIO

Redefine your sound experience with the available Rockford Fosgate® premium sound system. High-performance audio explodes with 710 watts of power that floods the entire interior with crystal-clear sound through nine, specifically-tuned speakers including a 10" subwoofer. And with six months pre-paid SIRIUS Satellite Radio, you will have the best in audio entertainment. Standard on the GT model.



ROOF PLUG-IN SPORT RACK SOCKETS

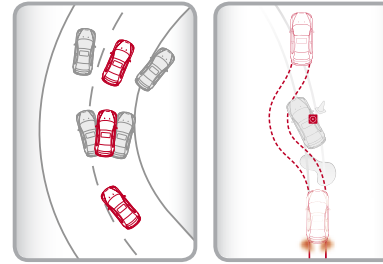
For those times when you need to put bulkier items on the roof, such as bikes, luggage, water toys, snow gear, and much more, the available plug-in roof rack accommodation frees up even more room inside. With your gear safely attached up top, you'll never have to forego comfort or leave anything behind.





SAFETY IS PARAMOUNT

The Lancer Sportback features dual front air bags with sensors that ensure the airbag remains activated by detecting occupant and seating position. There are a total of seven deployments ready to protect the driver and passengers.



ACTIVE STABILITY CONTROL WITH TRACTION CONTROL

Active Stability Control (ASC) and Traction Control (TC) help you to maintain control in adverse driving conditions and during emergency manoeuvres. Working with the Sportback's Anti-lock Braking System (ABS), ASC constantly monitors available traction by using a series of sensors which alerts the control unit to counteract slipping or loss of control by applying the brakes on specific wheels. Further complementing the system, TC limits power to the wheels to provide an extra measure of grip on the road and keep you going in your intended direction.



EXCITE YOUR SENSES

Sitting behind the wheel of the 2013 Lancer Sportback, you'll immediately sense its sporty feel, with its curvy dashboard, distinctive instrument panel and centre console. Once comfortably seated behind the wheel, you will instantly notice the expansiveness of the cabin created by the forward-mounted windscreen and its sloping European-styled hatchback. Roomy enough to seat five adults, and with a configurable cargo area to adjust to any lifestyle, you'll marvel at the inspired design while appreciating its sleek and sensuous appeal.



BIG ON SPACE

The Sportback's wide-opening hatch reveals another surprise. A unique, dual level cargo floor can be lowered by 90 mm (3.5") to create 433L (15.3 cu.ft.) of added flexibility for large or tall loads. For even bigger cargo or gear, simply fold down the standard 60/40 split folding rear seat with a single touch release lever, opening up an amazing 1,492L (52.7 cu.ft.) of unexpected space.

COLOURS

> Leather standard on GT



Tarmac Black Pearl
Black Interior



Titanium Grey Metallic
Black Interior



Apex Silver Metallic
Black Interior



Rally Red Metallic
Black Interior



Cosmic Blue Metallic
Black Interior



Wicked White
Black Interior

WARRANTY

10YEAR
160,000 km
POWERTRAIN LTD WARRANTY**

**BEST BACKED CARS
IN THE WORLD®*****

At Mitsubishi, we're so confident in the quality, reliability and durability of the cars we build that we back our passenger cars and sport utility vehicles with some of the most comprehensive warranties available. This list is headed by a 10-year/160,000 km Powertrain Limited Warranty**, a 5-year/100,000 km fully transferable bumper-to-bumper New Vehicle Limited Warranty; the only vehicle manufacturer that offers up to 5 year/100,000 km accessory warranty and 5-years/Unlimited kms Roadside Assistance. So now, when you drive off in your new Mitsubishi, you'll leave with even more peace of mind, knowing you can enjoy it to the fullest for many years to come.



WANT TO KNOW MORE? VISIT MITSUBISHI-MOTORS.CA

FOR A COMPLETE LIST OF FEATURES, TECHNICAL SPECIFICATIONS AND OPTIONS, VISIT WWW.MITSUBISHI-MOTORS.CA

TRIMS AND OPTIONS

SE STANDARD SPECIFICATIONS

5-DOOR HATCHBACK, 5-PASSENGER
2.0L DOHC 16-VALVE MIVEC I4, 148 HP

- 2.0L DOHC MIVEC 4 CYLINDER ENGINE
- 5-SPEED MANUAL TRANSMISSION OR OPTIONAL CONTINUOUSLY VARIABLE TRANSMISSION (CVT)
- ANTI-LOCK BRAKING SYSTEM (ABS) WITH ELECTRONIC BRAKE-FORCE DISTRIBUTION (EBD)
- 7 AIRBAGS (DUAL FRONT, FRONT SEAT-MOUNTED SIDE-IMPACT, SIDE-IMPACT CURTAIN, DRIVER KNEE)
- ANTI-THEFT SECURITY ALARM SYSTEM
- 16" ALLOY WHEELS
- BLACK MESH GRILLE WITH CHROME SURROUND (UPPER & LOWER)
- HEATED & FOLDING POWER SIDE-VIEW MIRRORS

- AIR CONDITIONING
- HEATED FRONT SEATS
- POWER DOOR LOCKS WITH REMOTE KEYLESS ENTRY SYSTEM
- POWER WINDOWS WITH AUTO-UP & DOWN DRIVER'S WINDOW
- TILT & HEIGHT ADJUSTABLE STEERING WHEEL
- STEERING WHEEL-MOUNTED CRUISE & AUDIO CONTROLS
- BLUETOOTH® 2.0 HANDS-FREE CELLULAR PHONE INTERFACE WITH STREAMING AUDIO & USB INPUT WITH VOICE CONTROL

OPTIONS

- POWER GLASS SUNROOF WITH SUNSHADE

GT ALL SE STANDARD SPECIFICATIONS PLUS

5-DOOR HATCHBACK, 5-PASSENGER
2.0L DOHC 16-VALVE MIVEC I4, 148 HP

- 16" 5-SPOKE ALLOY WHEELS
- POWER GLASS SUNROOF WITH SUNSHADE
- FRONT FOG LAMPS
- CHROME EXHAUST FINISHER
- AUTOMATIC CLIMATE CONTROL
- LEATHER SEATING SURFACES
- POWER DOOR LOCKS WITH FAST-KEY KEYLESS ENTRY & IGNITION SYSTEM
- LEATHER-WRAPPED STEERING WHEEL & GEAR SHIFT KNOB & PARKING BRAKE LEVER

- STEERING WHEEL MAGNESIUM-ALLOY PADDLE SHIFTERS (CVT ONLY)
- 710-WATT ROCKFORD-FOSGATE® PUNCH PREMIUM SOUND SYSTEM WITH 9 SPEAKERS INCLUDING 10" SUBWOOFER
- 6CD/MP3 IN-DASH CHANGER
- SIRIUS® SATELLITE RADIO WITH 6-MONTHS SUBSCRIPTION

Technical data, equipment and options shown are based on the latest information available at the time of printing and are subject to change without notice. Colours may vary due to the printing process. Exterior and interior lights on vehicles shown may be illuminated for illustration purposes only. Vehicles are shown with optional equipment or images may be international models shown. Not all equipment is available on every model. For complete details about equipment configuration and Mitsubishi Genuine Accessories, please contact your Mitsubishi Retailer.

©2012 Mitsubishi Motor Sales of Canada Inc.

** See Mitsubishi Retailer for Limited Warranty and Roadside Assistance terms and conditions.

*** Best backed claim does not cover Lancer Evolution and RALLIART models as well as i-MiEV. Lancer Evolution and RALLIART models include a 5-year/100,000 km powertrain limited warranty, 3-year/60,000 km new vehicle limited warranty and 5-year/unlimited km roadside assistance. i-MiEV models include a 5-year/100,000 km powertrain limited warranty, 3-year/60,000 km new vehicle limited warranty and a 3-year/unlimited km roadside assistance.