



**HYUNDAI**

NEW THINKING.  
NEW POSSIBILITIES.™

2014

**ELANTRA**



# CHALLENGE EVERYTHING.

CHALLENGE. IT'S IN OUR DNA, AND IT'S EXACTLY WHY HYUNDAI HAS BECOME A LEADER IN THE AUTOMOTIVE INDUSTRY. WE BELIEVE THAT BEING A LEADER MEANS VENTURING AWAY FROM THE MAINSTREAM AND CHALLENGING CONVENTION. THIS ATTITUDE IS THE DRIVING FORCE THAT HAS LED US TO MANUFACTURE OUR OWN STEEL, DESIGN VEHICLES WITH FLUIDIC SCULPTURE, AND MOVE MORE FEATURES FROM THE OPTIONAL LIST TO THE STANDARD LIST ON ALL OUR VEHICLES. WE CHALLENGE OURSELVES. WE CHALLENGE PHYSICS. WE CHALLENGE THE STATUS QUO. AT HYUNDAI, WE CHALLENGE EVERYTHING, AND IT'S THIS THINKING, A **NEW KIND OF THINKING** THAT LEADS TO **NEW POSSIBILITIES** FOR YOU.

Visit [hyundaicanada.com](http://hyundaicanada.com)



## *A CLASS ABOVE THE REST*

Carmakers typically design new models by taking aim at the head of the class. At Hyundai, we challenge ourselves to set our sights higher and aim for a class above the rest. The Elantra enters the compact segment with a number of new features available for 2014, including projection headlights with LED accents, stylish LED taillights and an all-new 2.0L Gasoline Direct Injection (GDI) engine. When you consider everything the 2014 Elantra has to offer, one word comes to mind: Bullseye.

## *BEAUTY WITH PURPOSE*

The 2014 Elantra challenges design perfection. When you strive to maximize fuel-efficiency and create breathtaking beauty, aerodynamics plays a vital role. The sleek and streamlined design is derived from our fluidic sculpture design principles, every curve moulded not only for stunning style, but to also help reduce resistance for improved fuel economy. The challenge for design perfection influences every facet of the Elantra, from form and function, to beauty with purpose. The results speak for themselves.





AVAILABLE PROJECTION HEADLIGHTS  
WITH LED ACCENTS



AVAILABLE TURN SIGNAL INDICATORS



AVAILABLE LED TAILLIGHTS



# DESIGNED WITH YOU IN MIND

Like the breathtaking exterior, Hyundai designers used our acclaimed fluidic design principles as inspiration for the sophisticated interior cabin. Every curve is optimally engineered, every feature intuitively placed. Seamlessly connect to your music with available steering wheel-mounted audio controls, or keep in touch with family and friends throughout your journey with the available Bluetooth® Hands-free phone system. Additional features available to maximize your comfort include front and rear heated seats and a 7" LCD touch-screen navigation system, while the available proximity key and rearview camera provide added convenience. Take a seat in the 2014 Elantra today and see how we've designed with you in mind.



**AVAILABLE STEERING WHEEL-MOUNTED  
AUDIO/CRUISE/BLUETOOTH CONTROLS**



**AVAILABLE 7" LCD TOUCH-SCREEN NAVIGATION  
SYSTEM WITH REARVIEW CAMERA**



**AVAILABLE SUNROOF**

May not be exactly as shown.

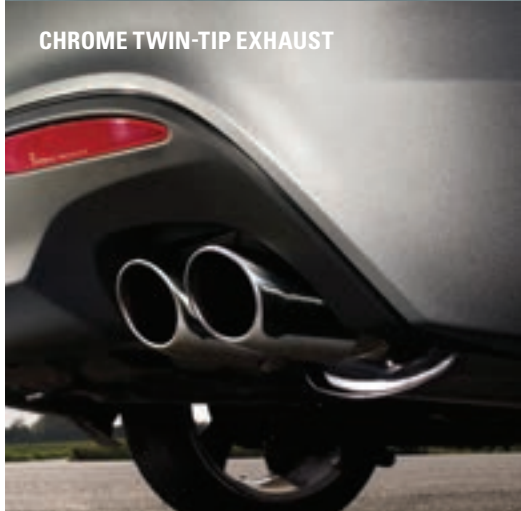
## ***SOPHISTICATION MEETS SPORTY 2-DOOR STYLE***

Athletic styling, plenty of space, and one engaging drive. The 2014 Elantra Coupe adds an integrated rear spoiler to the sleek, streamlined design, plus standard 16" alloy wheels and an all-new 2.0L GDI engine. For even more sport and tech, there is the SE model with aluminum foot pedals, a sport tuned suspension, and 17" alloys with black inserts. Add it all up and the Elantra Coupe offers the best of the Elantra Sedan, plus sporty 2-door style.





AVAILABLE 17" ALUMINUM ALLOY WHEELS



CHROME TWIN-TIP EXHAUST



## *A NEW STANDARD IN STANDARD SAFETY*

An integrated Vehicle Stability Management System, Electronic Stability Control with Traction Control System<sup>2</sup>, six airbags<sup>1</sup>, and Hillstart Assist Control. When you consider all the safety features that are standard on the 2014 Elantra, there's no wonder that it was awarded an IIHS Top Safety pick award<sup>9</sup> and 5-star Overall Crash Safety Rating award<sup>8</sup>. In fact, it is one of the very few in its class to offer 4-wheel disc brakes with an Anti-lock Braking System (ABS) on every model. Here's to new thinking, new possibilities, and new standards.



<sup>8</sup>2014 Elantra Sedan winner of 5-Star Overall Crash Safety Rating – National Highway Traffic Safety Administration (NHTSA).

<sup>9</sup>2014 Elantra Sedan winner of Top Safety Pick – Insurance Institute for Highway Safety (IIHS).



## ***AN EFFICIENT PERFORMER***

Add innovative engine technology to an already stunning aerodynamic design and you get one fuel efficient vehicle. The Elantra comes equipped with a standard 1.8L engine that uses an aluminum alloy engine block to reduce engine weight and Dual Continuously Variable Valve Timing (D-CVVT) technology to help optimize engine response. All this and more helps to improve fuel economy, allowing the 148 horsepower engine to achieve 6.4L/100km combined fuel economy<sup>^</sup> (A/T). If you're looking for more power, step up to the all-new, available 2.0L GDI engine (standard on Elantra Coupe models), which increases by 25 horsepower, totaling to a powerful 173 horsepower. Both engines can be matched with an available 6-speed automatic transmission with SHIFTRONIC<sup>®</sup> manual shift mode, so you can enjoy better fuel efficiency with smoother acceleration on the highway.

**AVAILABLE 2.0L GDI ENGINE**



**4-WHEEL DISC BRAKES WITH ABS**



**STANDARD 6 AIRBAGS<sup>1</sup>**



# ELANTRA FEATURES



## WRAPAROUND LED TAILLIGHTS.

The 2014 Elantra is equipped with available stylish, energy-saving LED taillights, for increased visibility day and night.



## HEATED FRONT AND REAR SEATS.

In addition to the available heated front seats (standard on Elantra Coupe models), the Elantra Sedan GLS and Limited come equipped with heated rear seats as well.



## STEERING WHEEL-MOUNTED CONTROLS.

Available fingertip control of the sound system, cruise control and Bluetooth® Hands-free phone system is as intuitive as it is enjoyable (standard on Elantra Coupe models). In addition to voice commands, the available Hand-free phone system also supports Bluetooth® audio streaming.



## POWER SUNROOF.

Add a wide open swath of sky to your journey with an available power tilt-and-slide, one-touch glass sunroof.



## NAVIGATION SYSTEM WITH REARVIEW CAMERA.

The 2014 Elantra features an available 7" LCD touch-screen navigation system that not only helps guide you from point A to B, but also acts as a rearview camera when reversing to help you see behind when backing up. Also available is the 4.3" LCD touch-screen with rearview camera. Both rearview camera systems also provide guidelines to help let you know how close you are to an object behind you.



## PROJECTION HEADLIGHTS WITH LED ACCENTS.

With available projection headlights, the Elantra emits a strong, focused beam of light that greatly increases night-time visibility. It does so in style with LED accents that frame the upper edges of the headlight.



## NEW 2.0L GDI ENGINE.

The Elantra is now available with a 2.0L engine that has been engineered with our innovative Gasoline Direct Injection (GDI) technology for improved efficiency and power (standard on Elantra Coupe models). What's more, automatic transmission models are equipped with our Active ECO System. At the press of a button, the Active ECO System modifies engine and transmission control for smoother and smarter accelerations to help improve fuel economy.



## PROXIMITY KEY WITH PUSH-BUTTON START.

The available proximity key senses your presence, allowing you to unlock doors and start the engine with just the push of a button.



## DRIVER SELECTABLE STEERING (DSS).

We're all different. And since road conditions may require different steering characteristics, and alternating drivers may prefer different steering settings – the 2014 Elantra now features standard driver selectable steering. DSS provides three driver-selectable operating modes (Comfort, Normal, and Sport) to tailor the vehicle's steering response at any time based on driver preference and road conditions.



## THERE'S NO SUBSTITUTE FOR PEACE OF MIND.

The quality of our vehicles is equally matched by the quality of our warranty. Rest assured, we stand proudly and confidently behind our vehicles to give you the ultimate peace of mind with a 5 year/100,000km comprehensive limited warranty, one of the best backed warranties in Canada. We also provide a 3 year/Unlimited km Roadside Assistance Program<sup>††</sup> featuring flat tire changing, lockout service and more. Just one toll-free call away, 24 hours a day. You're covered with Hyundai.

**5 YEAR  
WARRANTY**

**100,000 KM**  
COMPREHENSIVE LIMITED WARRANTY

**5-YEAR/100,000 KM**  
Comprehensive Limited Warranty<sup>†</sup>

**5-YEAR/100,000 KM**  
Powertrain Warranty

**5-YEAR/100,000 KM**  
Emission Warranty

**3-YEAR/UNLIMITED KM**  
Roadside Assistance Program<sup>††</sup>

# ELANTRA COLOURS

## ELANTRA

*L, GL and GLS models only*

### INTERIOR



GREY CLOTH SEATS

*Limited and Limited with Tech Package models only*

### INTERIOR



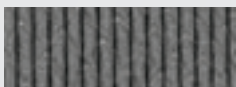
BLACK LEATHER SEATS

## ELANTRA COUPE

### INTERIOR



BLACK CLOTH SEATS **A**



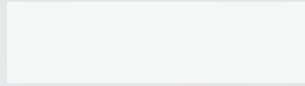
GREY CLOTH SEATS **B**



BLACK LEATHER SEATS **C**  
*(SE model only)*

### EXTERIOR

GLACIER WHITE PEARL



RADIANT SILVER



HARBOUR GREY METALLIC



DESERT BRONZE



INDIGO BLUE PEARL



BLACK NOIR PEARL

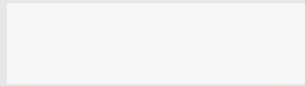


VENETIAN RED



### EXTERIOR

MONACO WHITE



SHIMMERING SILVER



TITANIUM GREY METALLIC



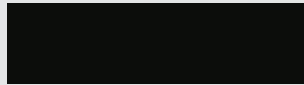
SANDY BRONZE



WINDY SEA BLUE



SPACE BLACK



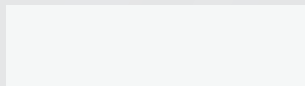
GERANIUM RED



### EXTERIOR

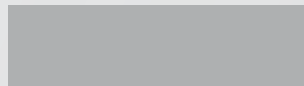
MONACO WHITE

**BC**



SHIMMERING SILVER

**AC**



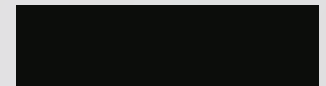
TITANIUM GREY METALLIC

**AC**



SPACE BLACK

**BC**



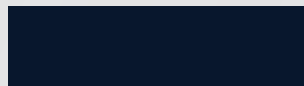
GERANIUM RED

**AC**



WINDY SEA BLUE

**AC**



Lettering denotes available exterior and interior colour combinations.

Choice of interior colour depends upon model and/or exterior colour selection. Due to print production process, the colours shown throughout this brochure may vary slightly from the actual hue. See your dealer for model applications and to view the Hyundai Colour Selector. Visit [hyundaicanada.com](http://hyundaicanada.com) or see your dealer for details. \*May not be exactly as shown.

# ELANTRA ACCESSORIES

## RUBBER FLOOR MATS.

Protect the interior of your Hyundai from everyday dirt and debris with custom-made floor mats. Remove carpet mats prior to installation.



## MUD GUARD KIT.

Custom-fit mud guards help keep the dirt and debris of everyday driving where it belongs.



## CARGO TRAY.

Add years to the interior of your Hyundai by protecting it from spills and messy loads with a durable, custom-fit cargo tray.



## PLASTIC HOOD PROTECTOR.

Help prevent dents and scratches caused by road and vehicle debris with an attractive plastic hood protector.



## BLOCK HEATER.

Engineered for your Hyundai, a block heater will help ensure fast starts and reduce engine wear in extreme weather.



## SIDE VISORS.

Compliment your vehicle with a sleek and durable set of side visors that will help reduce glare while providing you with fresh air. Custom made for your vehicle using high quality reinforced tinted acrylic plastic, these visors will look good on your vehicle for years to come.



## ALL WEATHER FLOOR LINERS.

Protect the interior of your Hyundai with the most advanced floor protection available. These front floor liner features raised edges to protect your carpet from dirt, rain, slush and snow. Designed to snap in using the factory carpet retention pins, these floor liners will protect your carpeting for years to come. Remove carpet mats prior to installation.



## REAR SPOILER.

Add a touch of style and sportiness to your vehicle with an aerodynamic rear spoiler. It also incorporates a brake light for added visibility and safety. Sedan only.



## REAR BUMPER PROTECTOR.

Help protect the finish on your bumper from chips and scratches, when loading and unloading the cargo area, with this durable, custom-fit rear bumper protector.



## CARGO NET.

A custom-fit cargo net ensures everything you're transporting remains organized and in place by preventing items from sliding around.

# ELANTRA SPECIFICATIONS

## L

### Standard Equipment Includes:

1.8L DOHC, 16-valve, 4-cylinder, Engine with Dual Continuously Variable Valve Timing (D-CVVT) ■ 15" Steel Wheels with Covers ■ 6-Speed Manual Transmission ■ 4-wheel Disc Brakes ■ Airbags<sup>1</sup> (6): Advanced Dual Front, Front Seat-mounted Side-impact and Roof-mounted Side-impact and Roof-mounted Side-curtain ■ AM/FM/CD/MP3 Audio System with 6 Speakers ■ Anti-lock Braking System (ABS) with Electronic Brake-force Distribution (EBD) ■ Central Power Door Locks ■ Driver's Seat Height Adjuster ■ Driver Selectable Steering ■ Dual Heated Power Exterior Mirrors ■ Hill-start Assist Control (HAC) ■ iPod®/USB/Auxiliary Input Jacks ■ Power Windows with Driver's Auto Down ■ Rear Seat Centre Armrest with Cupholders ■ Trip Computer ■ Vehicle Stability Management (VSM), Electronic Stability Control (ESC) with Traction Control System (TCS)<sup>2</sup>

## GL

### Includes Elantra L Standard Equipment Plus:

16" Steel Wheels with Covers ■ Automatic Headlights ■ Bluetooth® Hands-free Phone System ■ Heated Front Seats ■ Keyless Entry System with Alarm ■ Manual Air Conditioning ■ AM/FM/SiriusXM™/CD/MP3 Audio System with 6 Speakers ■ Steering Wheel-mounted Audio and Cruise Controls ■ Telescopic Steering Wheel

Optional: 6-speed Automatic Transmission with SHIFTRONIC®

## GLS

### Includes Elantra GL Standard Equipment Plus:

16" Alloy Wheels ■ Cloth Door Inserts ■ Fog Lights ■ Front Windshield Sunshade Band ■ Heated Rear Seats ■ Illuminated Front Sunvisors with Extensions ■ 4.3" Touch-screen with Rearview Camera ■ Illuminated Ignition Key Cylinder Surround ■ Leather-wrapped Steering Wheel and Gear Shift Knob ■ Power Tilt and Slide Sunroof

Optional: 6-speed Automatic Transmission with SHIFTRONIC®

## LIMITED

### Includes Elantra GLS Standard Equipment Plus:

2.0L Nu GDI 4-cylinder Engine ■ 173 HP ■ 17" Alloy Wheels ■ 6-speed Automatic Transmission with SHIFTRONIC® ■ 8-way Power Driver's Seat with Lumbar Support ■ Auto-dimming Rearview Mirror with HomeLink® ■ Chrome Beltline Molding ■ Chrome Exterior Door Handles ■ Chrome Interior Door Handles ■ Dark Chrome Lower Front Grille ■ Deluxe Door Sill Plates ■ Deluxe Sliding Front Centre Armrest ■ Dual-zone Automatic Temperature Control ■ Hood Insulator ■ Leather Seating Surfaces ■ Simulated Leather Door Inserts ■ Mirror-mounted Turn Signal Indicators ■ Power Windows with Driver's Auto Up/Down and Pinch Protection ■ Solar Control Glass ■ Projection Headlights with LED Accents ■ LED Taillights

## LIMITED with Technology Package

### Includes Elantra Limited Standard Equipment Plus:

7" Touch-screen Navigation System with Rearview Camera ■ AM/FM/SiriusXM™/CD/MP3 Audio System with 6 Speakers and External Amp ■ Proximity Key with Push-button Start

## PERFORMANCE

		L	GL	GLS	LIMITED	LIMITED w/ Tech Pkg.
Engine	1.8L Nu MPI 4-cylinder Engine	S	S	S	-	-
	2.0L Nu GDI 4-cylinder Engine	-	-	-	S	S
Displacement	1.8L (1,797 cc)	S	S	S	-	-
	2.0L (1,999 cc)	-	-	-	S	S
Bore & Stroke (mm)	81.0 x 87.2	S	S	S	-	-
	81 x 97	-	-	-	S	S
Compression Ratio	10.3:1	S	S	S	-	-
	11.5	-	-	-	S	S
Horsepower @ RPM	148 @ 6,500	S	S	S	-	-
	173 @ 6,500	-	-	-	S	S
Torque (lb-ft) @ RPM	131 @ 4,700	S	S	S	-	-
	154 @ 4,700	-	-	-	S	S
Valve Train	16 - Valve / Dual CVVT	S	S	S	S	S
	2-step Variable Induction System + Variable Charge Motion (VCM)	S	S	S	S	S
Fuel Delivery System	Multi-Point Injection (MPI)	S	S	S	-	-
	Gasoline Direct Injection (GDI)	-	-	-	S	S
Block/Head Composition	Aluminum	S	S	S	S	S
	Hydraulic	S	S	S	S	S
Exhaust	Single	S	S	S	S	S
	ULEV	S	S	S	S	S
Emissions System	Distributorless	S	S	S	S	S
	13.5 V 90 A	S	S	S	S	S
Ignition System Type	48 AH	S	S	S	S	S
	Front Wheel Drive	S	S	S	S	S
Alternator Rating	13.5 V 90 A	S	S	S	S	S
	48 AH	S	S	S	S	S
Battery Rating	48 AH	S	S	S	S	S
	Front Wheel Drive	S	S	S	S	S
Drive Configuration	Front Wheel Drive	S	S	S	S	S
	Front Wheel Drive	S	S	S	S	S
Transmission Type	6-Speed Manual	S	S	S	-	-
	6-Speed Automatic with SHIFTRONIC® Manual Shift Mode	-	0	0	S	S
Brakes	Front: Power-assisted Ventilated Disc (280 mm Diameter)	S	S	S	S	S
	Rear: Power-assisted Solid Disc (262 mm Diameter)	S	S	S	S	S
Miscellaneous Features	Chassis	S	S	S	S	S
	Materials	S	S	S	S	S
Steering	Unibody	S	S	S	S	S
	High Tensile Steel	S	S	S	S	S
Motor-driven Power Steering (MDPS) with DSS, Rack and Pinion	Overall Ratio	S	S	S	S	S
	Turning Diameter (m)	S	S	S	S	S
Suspension	13.9	S	S	S	S	S
	10.6	S	S	S	S	S
Tires	Front: MacPherson struts with Coil Springs, Stabilizer bar (22 mm) and Gas Shock Absorbers (Twin Tube)	S	S	S	S	S
	Rear: Torsion Axle with Coil springs and Gas Shock Absorbers (Mono Tube)	S	S	S	S	S
Wheels	P195/65R15	S	-	-	-	-
	P205/55R16	-	S	-	-	-
	P215/45R17	-	-	S	-	-
Wheels	15 x 6.0J Steel	S	-	-	-	-
	16 x 6.5J Steel	-	S	-	-	-
	16 x 6.5J Aluminum Alloy	-	-	S	-	-
	17 x 7.0J Aluminum Alloy	-	-	-	S	S

S = Standard  
0 = Optional  
- = Not Available

<b>EXTERIOR</b>		L	GL	GLS	LIMITED	LIMITED w/ Tech. Pkg.
Glass	Front Windshield Sunshade Band	–	–	S	S	S
	Solar Control Glass	–	–	–	S	S
Lighting	Automatic Headlights	–	S	S	S	S
	Fog Lights	–	–	S	S	S
	Headlights with Escort Feature	S	S	S	S	S
	Projection Headlight with LED Accents LED Taillights	–	–	–	S	S
Miscellaneous Features	Defroster – Rear Window, Electronic with Timer	S	S	S	S	S
	Wipers – 2 Speed, Variable Intermittent & Mist	–	S	S	S	S
Moulding and Trim	Black Lower Front Grille with Chrome Surround	S	S	S	–	–
	Dark Chrome Lower Front Grille with Black Surround	–	–	–	S	S
	Chrome Door Handles	–	–	–	S	S
Outside Mirrors	Power Adjustable, Body Colour, Heated	S	S	S	S	S
	Mounted Turn Signal Indicators	–	–	–	S	S
Sunroof		–	–	S	S	S

### INTERIOR

Air Conditioning	Manual Temperature Control	–	S	S	–	–
	Dual-zone Automatic Temperature Control	–	–	–	S	S
Audio	172-Watt AM/FM/CD/MP3 Audio System with 6 Speakers	S	–	–	–	–
	172-Watt AM/FM/SiriusXM™/CD/MP3 Audio System with 6 Speakers	–	S	–	–	–
	172-Watt AM/FM/SiriusXM™/CD/MP3 Audio System with 6 Speakers and 4.3" Touch-screen	–	–	S	S	–
	360-Watt AM/FM/SiriusXM™/CD/MP3 Audio System with 6 Speakers and External Amplifier iPod®/USB/Auxiliary Input Jacks	–	–	–	–	S
Console	Front Centre with Dual Cupholders, Fixed Armrest and Storage Box	S	S	S	–	–
	Front Centre with Dual Cupholders, Sliding Armrest and Storage Box	–	–	–	S	S
	Overhead Sunglass Holder	S	S	S	S	S
Door Trim	Cloth Door Inserts	–	–	S	–	–
	Simulated Leather Door Inserts	–	–	–	S	S
Front Seats	6-way Adjustable Driver's Seat	S	S	S	–	–
	8-way Power Adjustable Driver's Seat with Lumbar Support	–	–	–	S	S
	4-way Adjustable Passenger's Seat	S	S	S	S	S
	Heated Front Seats	–	S	S	S	S
Miscellaneous Features	Bluetooth® Hands-free Phone System with Voice Recognition	–	S	S	S	S
	Power Door Locks	S	S	S	S	S
	Proximity Key with Push-button Start	–	–	–	–	S
Mirrors	Driver and Front Passenger Vanity (Illuminated*)	S	S	S*	S*	S*
	Auto-dimming Rearview Mirror with HomeLink®	–	–	–	S	S
Navigation System	7" High-resolution Touch-screen	–	–	–	–	S
Power Windows	Driver's Auto-down	S	S	S	S	S
	Driver's Auto-up with Pinch Protection	–	–	–	S	S
Rearview Camera		–	–	S	S	S
Rear Seats	60/40 Split Folding Rear Seatback	S	S	S	S	S
	Heated Seats (bottom cushions)	–	–	S	S	S
Seat Trim	Premium Cloth	S	S	S	–	–
	Leather Seating Surfaces	–	–	–	S	S
Steering Wheel	Steering Wheel-mounted Bluetooth®, Audio and Cruise Controls	–	S	S	S	S
	Tilt and Telescopic	S	S	S	S	S
	Leather-wrapped (and gear shift knob)	–	–	S	S	S
	Driver Selectable Steering (DSS)	S	S	S	S	S

### SAFETY

		L	GL	GLS	LIMITED	LIMITED w/ Tech. Pkg.
Airbags <sup>1</sup>	Advanced Driver and Front Passenger (2)	S	S	S	S	S
	Occupant Classification System (OCS)	S	S	S	S	S
	Driver and Front Passenger Side-impact (2)	S	S	S	S	S
	Roof-mounted Side-curtain (2)	S	S	S	S	S
Brakes	Anti-lock Braking System (ABS) with Electronic Brake-force Distribution (EBD)	S	S	S	S	S
	Brake Assist (BA)	S	S	S	S	S
	4-wheel Disc Brakes	S	S	S	S	S
		S	S	S	S	S
Child Safety	Child Safety Locks (Rear)	S	S	S	S	S
	Rear Child-seat LATCH System	S	S	S	S	S
Miscellaneous Features	Anit-theft System Integrated with Remote Keyless Entry and Panic Alarm	–	S	S	S	S
	Vehicle Stability Management (VSM)	S	S	S	S	S
	Electronic Stability Control (ESC) with Traction Control System (TCS) <sup>2</sup>	S	S	S	S	S
	Hill-start Assist Control (HAC)	S	S	S	S	S
	Energy Absorbing Steering Column	S	S	S	S	S
	Body-side Reinforcements	S	S	S	S	S
Restraint Systems	Front: 3-Point Seatbelt with Adjustable Shoulder Height	S	S	S	S	S
	Front: Adjustable Head Restraints	S	S	S	S	S
	Rear: 3-Point Seatbelt (all positions)	S	S	S	S	S
	Rear: Adjustable Head Restraints (3)	S	S	S	S	S

### DIMENSIONS

Exterior Dimensions (mm)	Wheelbase	2,700	S	S	S	S	S
	Length	4,550	S	S	S	S	S
	Height	1,430	S	S	S	S	S
	Width (excluding mirrors)	1,775	S	S	S	S	S
	Minimum Ground Clearance	135	S	S	S	S	S
	Coefficient of Drag	0.28	S	S	S	S	S
Interior Dimensions Front/Rear (mm)	Head Room	1,017/943	S	S	S	S	S
	Leg Room	1,108/847	S	S	S	S	S
	Shoulder Room	1,420/1,393	S	S	S	S	S
	Hip Room	1,358/1,339	S	S	S	S	S
Track (mm) Front/Rear	15" Wheels	1,563/1,576	S	–	–	–	–
	16" Wheels	1,549/1,562	–	S	–	–	–
	17" Wheels	1,551/1,564	–	–	–	S	S
Volume (L)	Passenger Compartment	2,707	S	S	S	S	S
	Cargo (Trunk)	420	S	S	S	S	S
	Total	3,127	S	S	S	S	S
Weight (kg) 1.8 L	Curb: M/T	1,258 – 1,315	S	S	S	–	–
	Curb: A/T	1,278 – 1,335	0	0	0	–	–
	GVWR: M/T	1,740	S	S	S	–	–
	GVWR: A/T	1,760	0	0	0	–	–
Weight (kg) 2.0 L	Curb:	1,326 – 1,342	–	–	–	S	S
	GVWR:	1,760	–	–	–	S	S

### FUEL ECONOMY<sup>A</sup> (LITRES/100KM)

1.8L with Manual Transmission – City / Highway / Combined	7.6 / 5.3 / 6.6
1.8L with Automatic Transmission – City / Highway / Combined	7.3 / 5.2 / 6.4
2.0L with Automatic Transmission – City / Highway / Combined	8.4 / 5.6 / 7.1
Fuel Tank Capacity (L)	48

# ELANTRA COUPE SPECIFICATIONS

## GL

### Standard Equipment Includes:

2.0L Nu GDI, DOHC, 16-valve, 4-cylinder Engine with Dual Continuously Variable Valve Timing (D-CVVT) ■ 16" Alloy Wheels ■ 4-wheel Disc Brakes ■ Anti-lock Braking System (ABS) with Electronic Brake-force Distribution (EBD) ■ Automatic Headlights ■ 6-speed Manual Transmission ■ 6-way Adjustable Driver's Seat with Height Adjustment ■ 60/40 Split Fold-down Rear Seats ■ Airbags<sup>1</sup> (6): Dual Front, Front Seat-mounted Side-impact and Roof-mounted Side-curtain ■ AM/FM/SiriusXM™/CD/MP3 Audio System with 6 Speakers ■ iPod®/USB/Auxiliary Input Jacks ■ Bluetooth® Hands-free Phone System ■ Driver Selectable Steering ■ Dual Heated Power Exterior Mirrors ■ Heated Front Seats ■ Manual Air Conditioning ■ Power Windows with Driver's Auto Down ■ Power Door Locks ■ Rear Seat Centre Armrest with Cupholders ■ Rear Lip Spoiler ■ Steering Wheel-mounted Audio, Cruise and Bluetooth® Controls ■ Tilt and Telescopic Steering Wheel ■ Vehicle Stability Management (VSM), Electronic Stability Control (ESC) with Traction Control System (TCS)<sup>2</sup>

Optional: 6-speed Automatic Transmission with SHIFTRONIC®

**S** = Standard  
**O** = Optional  
- = Not Available

## GLS

### Includes Elantra Coupe GL Standard Equipment Plus:

Cloth Insert Door Trim ■ Driver Safety Window ■ Deluxe Sliding Centre Armrest ■ Mirror-mounted Turn Signal Indicators ■ Fog Lights ■ 4.3" Touch-screen with Rearview Camera ■ Illuminated Vanity Mirrors with Extensions ■ Leather-wrapped Steering Wheel & Gear Shift Knob ■ LED Taillights ■ Rearview Camera ■ Power Tilt and Slide Sunroof ■ Projection Headlights with LED Accent ■ Solar Glass with Sunshade Band

Optional: 6-speed Automatic Transmission with SHIFTRONIC®

## SE

### Includes Elantra Coupe GLS Standard Equipment Plus:

6-speed Automatic Transmission with SHIFTRONIC® ■ 17" Alloy Wheels ■ 7" Touch-screen Navigation System with Rearview Camera ■ Alloy Pedals ■ AM/FM/SiriusXM™/CD/MP3 Audio System with 6 Speakers and External Amp ■ Auto-dimming Rearview Mirror with HomeLink® ■ Dual-zone Automatic Temperature Control ■ Leather Seating Surfaces ■ Simulated Leather Door Inserts ■ Power Windows with Driver's Auto Up/Down and Pinch Protection ■ Proximity Key with Push-button Start ■ Sport-tuned Suspension

## PERFORMANCE

		GL	GLS	SE
Engine	2.0L Nu GDI 4-cylinder Engine with Hood Insulator	S	S	S
	Displacement	S	S	S
	Bore & Stroke (mm)	S	S	S
	Compression Ratio	S	S	S
	Horsepower @ RPM	S	S	S
	Torque (lb-ft) @ RPM	S	S	S
	Valve Train	S	S	S
	2-step Variable Induction System	S	S	S
	Fuel Delivery System	S	S	S
	Block/Head Composition	S	S	S
	Mounts	S	S	S
	Exhaust	S	S	S
	Emissions System	S	S	S
Ignition System Type	S	S	S	
Alternator Rating	S	S	S	
Battery Rating	S	S	S	
Drive Configuration	S	S	S	
	Gasoline Direct Injection (GDI)			
	Aluminum			
	Hydraulic			
	Twin-tip			
	ULEV			
	Distributorless			
	13.5 V 90 A			
	48 AH			
	Front Wheel Drive			
Transmission Type	6-Speed Manual	S	S	-
	6-Speed Automatic with SHIFTRONIC® Manual Shift Mode	O	O	S
Brakes	Front: Ventilated Disc (280 mm Diameter)	S	S	S
	Rear: Solid Disc (262 mm Diameter)	S	S	S
Miscellaneous Features	Chassis	S	S	S
	Materials	S	S	S
Steering	Motor-driven Power Steering (MDPS) with DSS, Rack and Pinion	S	S	S
	Overall Ratio	S	S	S
	Turning Diameter (m)	S	S	S
Suspension	Front: MacPherson struts with Coil Springs, Stabilizer bar (22 mm) and Gas Shock Absorbers (Twin Tube)	S	S	S
	Rear: Torsion Axle with Integrated V-beam (22 mm), Coil springs and Gas Shock Absorbers (Mono Tube)	S	S	S
Tires	P205/55R16	S	S	-
	P215/45R17	-	-	S
Wheels	16 x 6.5J Aluminum Alloy	S	S	-
	17 x 7.0J Aluminum Alloy	-	-	S

<b>EXTERIOR</b>		<b>GL</b>	<b>GLS</b>	<b>SE</b>
Glass	Front Windshield Sunshade Band	S	S	S
	Solar Control Glass	–	S	S
Lighting	Automatic Headlights	S	S	S
	Fog Lights	–	S	S
	Headlights with Escort Feature	S	S	S
	LED Taillights	–	S	S
	Projection Headlights with LED Accent	–	S	S
Miscellaneous Features	Wipers – 2 Speed, Variable Intermittent & Mist	S	S	S
	Defroster – Rear Window, Electronic with Timer	S	S	S
Moulding and Trim	Glossy Black Bumper Insert – Front Cover	–	–	S
	Black Lower Bumper – Rear	S	S	S
	Rear Lip Spoiler	S	S	S
Outside Mirrors	Power Adjustable, Body Colour, Heated	S	S	S
	Mounted Turn Signal Indicators	–	S	S
Sunroof	Power Tilt-and-Slide One-touch Open/Close Sunroof with Pinch Protection	–	S	S

## INTERIOR

Air Conditioning	Manual Temperature Control	S	S	–
	Dual-zone Automatic Temperature Control	–	–	S
Audio	172-Watt AM/FM/SiriusXM™/CD/MP3 Audio System with 6 Speakers	S	–	–
	172-Watt AM/FM/SiriusXM™/CD/MP3 Audio System with 6 Speakers and 4.3" Touch-screen	–	S	–
	360-Watt AM/FM/SiriusXM™/CD/MP3 Audio System with 6 Speakers and External Amplifier	–	–	S
	iPod®/USB/Auxiliary Input Jacks	S	S	S
Console	Overhead Sunglass Holder	S	S	S
	Front Centre Console with Dual Cupholders, Fixed Armrest and Storage Box	S	–	–
	Front Centre Console with Dual Cupholders, Sliding Armrest and Storage Box	–	S	S
Door Trim	Cloth Door Inserts	–	S	–
	Simulated Leather Door Inserts	–	–	S
Front Seats	6-way Adjustable Driver's Seat	S	S	S
	4-way Adjustable Passenger's Seat	S	S	S
	Heated Seats	S	S	S
Miscellaneous Features	Alloy Pedals	–	–	S
	Power Door Locks	S	S	S
	Remote Keyless Entry System with Alarm, Panic & Remote Trunk Release	S	S	S
	Proximity Key with Push-button Start	–	–	S
Mirrors	Illuminated Driver and Front Passenger Vanity	S	S	S
	Auto-dimming Rearview Mirror with HomeLink®	–	–	S
Navigation System	7" High-resolution Touch-screen	–	–	S
Power Windows	Driver's Auto-down	S	S	S
	Driver's Auto-up with Pinch Protection	–	S	S
Rearview Camera		–	S	S
Rear Seats	60/40 Split Folding Rear Seatback	S	S	S
	Centre Adjustable Armrest with Cupholders	S	S	S
Seat Trim	Premium Cloth	S	S	–
	Leather Seating Surfaces	–	–	S
Steering Wheel	Steering Wheel-mounted Bluetooth®, Audio and Cruise Controls	S	S	S
	Tilt and Telescopic	S	S	S
	Leather wrapped (and gear shift knob*)	S	S*	S*
	Driver Selectable Steering (DSS)	S	S	S

<b>SAFETY</b>		<b>GL</b>	<b>GLS</b>	<b>SE</b>
Airbags <sup>1</sup>	Advanced Driver and Front Passenger (2)	S	S	S
	Occupant Classification System (OCS)	S	S	S
	Driver and Front Passenger Side-impact (2)	S	S	S
	Roof-mounted Side-curtain (2)	S	S	S
Brakes	Anti-lock Braking System (ABS) and Electronic Brake-force Distribution (EBD)	S	S	S
	Brake Assist (BA)	S	S	S
Child Safety	Rear Child-seat LATCH System	S	S	S
Miscellaneous Features	Anit-theft System Integrated with Remote Keyless Entry and Panic Alarm	S	S	S
	Vehicle Stability Management (VSM)	S	S	S
	Electronic Stability Control (ESC) with Traction Control System (TCS) <sup>2</sup>	S	S	S
	Energy Absorbing Steering Column	S	S	S
	Body-side Reinforcements	S	S	S
Restraint Systems	Front: 3-Point Seatbelt with Adjustable Shoulder Height	S	S	S
	Front: Adjustable Head Restraints	S	S	S
	Rear: 3-Point Seatbelt (all positions)	S	S	S
	Rear: Adjustable Head Restraints (3)	S	S	S

## DIMENSIONS

Exterior Dimensions (mm)	Wheelbase	2,700	S	S	S
	Length	4,540	S	S	S
	Height	1,430	S	S	S
	Width (excluding mirrors)	1,775	S	S	S
	Minimum Ground Clearance	135	S	S	S
	Coefficient of Drag	0.28	S	S	S
Interior Dimensions Front/Rear (mm)	Head Room	1,012/943	S	S	S
	Leg Room	1,108/847	S	S	S
	Shoulder Room	1,419/1,384	S	S	S
	Hip Room	1,340/1,348	S	S	S
Track (mm) Front/Rear	16" Wheels	1,549/1,562	S	S	–
	17" Wheels	1,551/1,564	–	–	S
Volume (L)	Passenger Compartment	2,701	S	S	S
	Cargo (Trunk)	420	S	S	S
	Total	3,121	S	S	S
Weight (kg)	Curb: M/T	1,270 – 1,308	S	S	–
	Curb: A/T	1,293 – 1,331	0	0	S
	GVWR: M/T	1,740	S	S	–
	GVWR: A/T	1,760	0	0	S

## FUEL ECONOMY<sup>A</sup> (LITRES/100KM)

6-speed Manual Transmission – City / Highway / Combined	8.4 / 5.8 / 7.3
6-speed Automatic Transmission – City / Highway / Combined	8.3 / 5.6 / 7.1
Fuel Tank Capacity (L)	50





[hyundaicanada.com/Elantra](http://hyundaicanada.com/Elantra)  
[hyundaicanada.com/Elantra-coupe](http://hyundaicanada.com/Elantra-coupe)

<sup>TM</sup>The Hyundai name, logos, product names, feature names, images and slogans are trademarks owned by Hyundai Auto Canada Corp. Specifications, features, illustrations, accessories, materials and equipment and all other information shown in this brochure are based on the latest information available at the time of publication. Although descriptions are believed to be correct, accuracy cannot be guaranteed. Hyundai Auto Canada Corp. reserves the right to make any changes or modifications at any time, without notice or obligation, including, without limitation, in colour, specifications, features, accessories, materials, equipment and models. Some vehicles are shown with optional equipment. All Hyundai warranties have no deductible. <sup>1</sup>Hyundai's Comprehensive Limited Warranty coverage covers most vehicle components against defects in workmanship under normal use and maintenance conditions. <sup>2</sup>Hyundai's 24-Hour Roadside Assistance Program is a limited service and does not cover certain costs or expenses. Roadside Assistance is not a warranty. <sup>3</sup>Fuel economy figures are based on manufacturer's testing and are used for comparison purposes only. Actual fuel efficiency may vary based on driving conditions and the addition of certain vehicle accessories. <sup>4</sup>The Supplemental Restraint (Airbag) System (SRS) is designed to work with the 3-point seatbelt system. The SRS deploys in certain frontal and/or side-impact conditions where significant injury is likely. The SRS is not a substitute for seatbelts, which must still be worn at all times. Children under the age of 13 should be securely restrained in the rear seat. NEVER place a child-seat in the front seat of a Hyundai vehicle. <sup>5</sup>Electronic Stability Control (ESC) and Traction Control System (TCS) are meant to enhance conscientious driving habits and are not a substitute for safe driving practices. ESC cannot control your vehicle's stability under all driving situations. No system, no matter how advanced, can overcome physics or correct poor driving. Speed, road conditions and driver steering input will affect whether ESC can help prevent loss of control. See Owner's Manual for details. The SiriusXM<sup>TM</sup> name is a trademark of SiriusXM Satellite radio Inc., Bluetooth<sup>®</sup> word mark and logos are registered trademarks owned by Bluetooth SIG, Inc., iPod<sup>®</sup> is a registered trademark of Apple Inc., HomeLink<sup>®</sup> is a registered trademark of Johnson Controls Inc., Infinity<sup>®</sup> is a registered trademark of Harman International Inc., and any use of such marks by Hyundai is under license. All other trademarks and trade names are those of their respective owners.



[facebook.com/hyundaicanada](https://facebook.com/hyundaicanada)  
[youtube.com/hyundaicanada](https://youtube.com/hyundaicanada)  
[instagram.com/hyundaicanada](https://instagram.com/hyundaicanada)  
[twitter.com/hyundaicanada](https://twitter.com/hyundaicanada)