

*THIS IS
RLX*

2015



PA
SSI
ON



U.S. model shown.

The 2015 RLX is the standard bearer of luxury and performance in the Acura portfolio. Our simple goal with the RLX was to stir the driver in you, while satisfying your obvious taste for visionary innovation, craftsmanship and design.



RLX SPORT HYBRID
SUPER HANDLING ALL-WHEEL DRIVE™†



Acura's Direct-Injected, 3.5-litre i-VTEC® V6 engine and 3 electric motors are designed to help achieve fuel efficiency without sacrificing power. A combined 377-horsepower is managed by the first Acura-designed 7-speed dual-clutch transmission and a one-touch Electronic Gear Selector that engages the vehicle's computer to sense gear requirements intuitively. In the corners, it's like nothing you've ever driven. Acura's revolutionary Super Handling All-Wheel Drive™† system is coupled to a hybrid-electric Twin Motor Unit (TMU). This set-up dynamically distributes torque to each of the rear wheels, producing "on rails" handling at the will of the driver.

†None of the features we describe are intended to replace the driver's responsibility to exercise due care while driving. Drivers should not use handheld devices or operate certain vehicle features unless it is safe and legal to do so. Some features have technological limitations. For additional feature information, limitations and restrictions, please visit www.acura.ca/disclaimers or refer to the vehicle's owner's manual.

SHARPENED AGILITY – BY DESIGN

Sport Hybrid SH-AWD® lets you carve a precise line through a curve, whether you are cruising at high-speed, accelerating or simply coasting.



HEAD-UP DISPLAY

At-a-glance access to key driver inputs projected on the windshield. Display modes include Sport Hybrid system operation, turn-by-turn navigation, speedometer and compass, as well as alerts from various driver-assist systems.

SURROUND VIEW CAMERA SYSTEM†

Visibility is taken to a new level using four separate cameras that can be viewed independently or combined to create a composite "bird's-eye," ground view.

REACTIVE FORCE PEDAL

The RLX Sport Hybrid dynamically varies accelerator stiffness to assist the driver in applying optimum engine power in any driving condition to benefit fuel economy, or maintain traction.

RLX SPORT HYBRID

SUPER HANDLING ALL-WHEEL DRIVE™†

A POWERFUL CONTRADICTION

The power versus efficiency conundrum has confronted automotive engineers since the very beginning. Leave it to Acura to reconcile contradictory ideals.



The RLX Sport Hybrid's revolutionary powertrain uses three separate electric motors to help achieve the power of a conventional V8 engine with 4-cylinder-like fuel economy.

Unlike most hybrids, RLX Sport Hybrid retains performance mettle; a combined 341 lbs.-ft of torque at 4,500 rpm thanks to its 3.5-liter Direct-Injected i-VTEC® engine and 3 electric motors.

A powerful front electric motor supplies astounding torque during hard acceleration and is designed to improve fuel efficiency at low cruising speeds.

Independent electric motors at the rear wheels provide power for standing starts, low-speed cruising and rolling acceleration, as well as harness torque for unprecedented cornering.

†None of the features we describe are intended to replace the driver's responsibility to exercise due care while driving. Drivers should not use handheld devices or operate certain vehicle features unless it is safe and legal to do so. Some features have technological limitations. For additional feature information, limitations and restrictions, please visit www.acura.ca/disclaimers or refer to the vehicle's owner's manual.



The RLX is the ultimate expression of Acura. A 310-horsepower, 3.5-litre 24-valve, Direct Injection, i-VTEC® 6-cylinder engine with Variable Cylinder Management® (VCM®); Acura's revolutionary Precision All-Wheel Steer™ system; sparkling Jewel Eye™ LED headlights—
The RLX story begins.*

VARIABLE CYLINDER MANAGEMENT®

Variable Cylinder Management is designed to help the RLX realize impressive fuel efficiency by automatically changing the V6 engine to run on six or three cylinders, depending on driving conditions. The cylinder activation is seamless and not felt by driver or passengers. The fuel consumption of as little as 7.7 litres/100 km† on the highway however, is something you're sure to notice.

6-SPEED SEQUENTIAL SPORTSHIFT® WITH PADDLE SHIFTERS

Race-inspired paddle shifters specifically tuned to complement a quick-shifting 6-speed Sequential SportShift® automatic transmission offer drivers the convenience of automatic shifting as well as the control and gratification that comes from changing gears manually.

*None of the features we describe are intended to replace the driver's responsibility to exercise due care while driving. Drivers should not use handheld devices or operate certain vehicle features unless it is safe and legal to do so. Some features have technological limitations. For additional feature information, limitations and restrictions, please visit www.acura.ca/disclaimers or refer to the vehicle's owner's manual.

†Estimated fuel economy based on Government of Canada's new 5-cycle testing method. Your actual fuel consumption will vary based on driving habits and other factors – use for comparison only. For more information on 5-cycle testing, visit <http://vehicles.nrcan.gc.ca>

HANDLING MEETS
HIGHER LEARNING



PRECISION ALL-WHEEL STEER™

Acura's Precision All-Wheel Steer system[†] is designed to deliver an unprecedented level of precision and control. It's the world's first system that enables the rear wheels to adjust toe angles independently of each other—1.8 degrees, optimizing handling for smooth, stable and quick lane changes. Working in concert with Vehicle Stability Assist (VSA®)[†] and the Agile Handling Assist[†] dynamic braking system, Precision All-Wheel Steer helps to enhance vehicle stability, maneuverability and control.



AGILE HANDLING ASSIST

Linear and precise, Agile Handling Assist[†] complements the Precision All-Wheel Steer™ system on the RLX to help improve cornering ability. This system pays further dividends by smoothing ride quality and making more pleasurable the tactile response of accelerating the RLX.

[†]None of the features we describe are intended to replace the driver's responsibility to exercise due care while driving. Drivers should not use handheld devices or operate certain vehicle features unless it is safe and legal to do so. Some features have technological limitations. For additional feature information, limitations and restrictions, please visit www.acura.ca/disclaimers or refer to the vehicle's owner's manual.

U.S. model shown.



AMP

LI

FY

KRELL AUDIO

The RLX Elite trim level offers the only in-car audio system designed and built by legendary Krell Industries. Audiophiles already know Krell for its fundamental research into amplifier design and performance. Every Krell component used in the RLX upholds their legacy, including an incredible 14-speaker array that delivers premium fidelity from a CD/AM/FM/SiriusXM™† tuner, MP3/Windows Media® Audio compatibility, auxiliary input jack, USB device connector* and more—a direct result of Krell's discoveries in audio amplification.

Unprecedented linearity and accuracy are the result.

†Only available in certain areas. Includes a no-charge trial of three months.

*Only compatible with certain devices and operating systems. Cellular data and/or voice charges may apply, including roaming charges and/or other amounts charged by your wireless carrier.

BRI LLIA NCE

JEWEL EYE™ LED HEADLIGHTS— LEADING THE WAY

Acura's signature Jewel Eye LED headlights present a dual-stacked array with a total of eight separate high-intensity LED lamps and utilize ultra-reflective optical lenses to provide powerful, down-the-road illumination. Even when they are not illuminated, Acura Jewel Eye LED headlights give the RLX a sophisticated, gem-like appearance.

LED TAIL LAMPS

Rear LED lighting further ensures crystal clear nighttime visibility and provides a striking exterior look.



U.S. model shown.





**ADAPTIVE CRUISE CONTROL (ACC)
WITH LOW-SPEED FOLLOW***

As with a conventional cruise-control system, the available Adaptive Cruise Control System with Low-Speed Follow allows you to set a desired speed, but it is also designed to keep a set distance from the car ahead of you, so you can enjoy cruise control even in light traffic conditions.

**LANE DEPARTURE
WARNING (LDW) SYSTEM†***

Should the RLX begin to drift out of its lane without a turning signal being applied, the available Lane Departure Warning system is designed to trigger both an audible and visual warning to alert the driver. This constant connection between car and road is achieved through an onboard camera that is designed to monitor the vehicle's lane position at all times.

**LANE KEEPING ASSIST
SYSTEM†* (LKAS)**

The available Acura Lane Keeping Assist System works proactively to keep the vehicle inside the lane during normal driving conditions. If the car begins to cross lane markings unintentionally, the Lane Keeping Assist System is engineered to apply light steering torque to return the vehicle to the centre of the lane while a continuous beep inside the cabin is provided to alert the driver.

†System operation may be affected by extreme interior heat.

*None of the features we describe are intended to replace the driver's responsibility to exercise due care while driving. Drivers should not use handheld devices or operate certain vehicle features unless it is safe and legal to do so. Some features have technological limitations. For additional feature information, limitations and restrictions, please visit www.acura.ca/disclaimers or refer to the vehicle's owner's manual.



**ACURA NAVIGATION SYSTEM
WITH VOICE RECOGNITION^{††*}**

The satellite-linked navigation system, found on the RLX Tech and Elite, can pinpoint your location almost anywhere in North America or access its onboard search directory. The system is equipped with bilingual voice recognition software and offers real-time directions by either voice or moving-map display. Just ask and the system can show you the most direct route to your destination or, with the Zagat Survey[®] ratings, help you find a restaurant based on the type of cuisine you're craving.

[†]None of the features we describe are intended to replace the driver's responsibility to exercise due care while driving. Drivers should not use handheld devices or operate certain vehicle features unless it is safe and legal to do so. Some features have technological limitations. For additional feature information, limitations and restrictions, please visit www.acura.ca/disclaimers or refer to the vehicle's owner's manual. ^{*}Map database covers major metropolitan areas in Canada and 48 contiguous U.S. states.

**MULTI-ANGLE REARVIEW CAMERA[†]
WITH DYNAMIC GUIDELINES**

This innovation provides a clear view from behind your vehicle. The image appears on the RLX cabin's colour information display and the navigation system display on the RLX Tech or Elite models. Even if the navigation system is turned off, the camera is activated automatically when you engage reverse—eyes in the back of your head, only better.

**BLIND SPOT INFORMATION
(BSI) SYSTEM[†]**

The RLX expands your field of vision by providing information about vehicles that are in, or about to enter your blind spot when you're passing, being passed, merging or changing lanes. The available Blind Spot Information system uses radar technology that is designed to detect objects moving as slow as ten kilometres per hour.

ACURALINK™†,*

A NEW BAR FOR CONNECTIVITY

AcuraLink

Available to RLX drivers is the AcuraLink™†,* connectivity system, and with it an unprecedented combination of technology and convenience. Using both embedded two-way communications and web-enabled devices, AcuraLink curates a truly digital experience with your RLX.

NAVIGATION

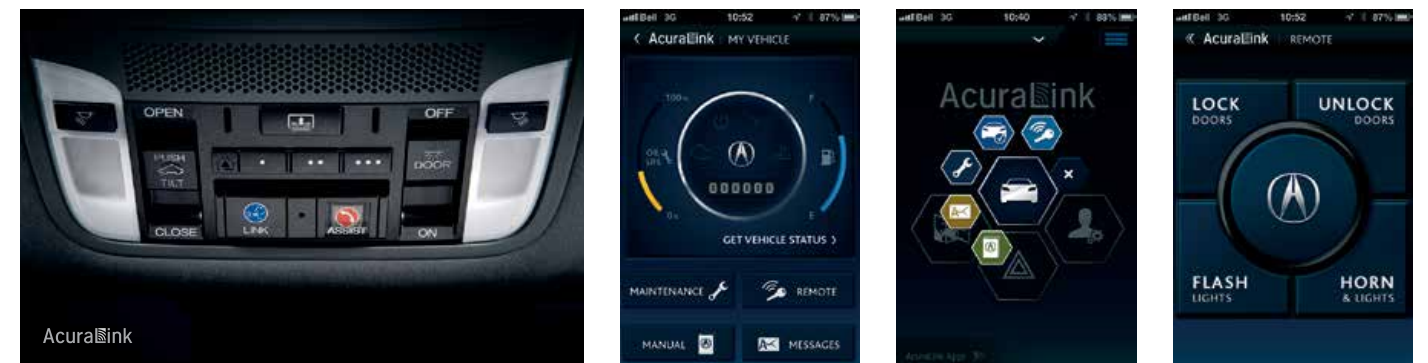
AcuraLink brings some impressive additions to your Acura Navigation System†† like Real-Time Traffic™*** with surface street traffic information. You'll also be able to request points of interest via a live concierge agent and have the route sent directly to your navigation screen. Or map locations yourself and upload them to your screen via the MyAcura website, or AcuraLink Connect app*.

ENTERTAINMENT

AcuraLink makes the RLX one of the first Acuras to feature Aha™** by Harman, a cloud-based interface that provides you with thousands of customizable media and connectivity choices. The AcuraLink* Streams app featuring Aha lets you access your desired content on the go. Once you have selected your favourite stations, you can connect your smartphone with your RLX through your on-board touchscreen and have immediate access to your favourite internet content, including personalized music, internet radio, podcasts, audiobooks, location-based searches and even have your Facebook® and Twitter feeds read out loud as you drive.

REMOTE CONTROL

With the AcuraLink™†,* Connect app, or MyAcura website, you no longer need to be in your RLX to connect with it. Using your web-enabled device, you can remotely lock and unlock doors; use the car finder feature in a crowded lot; even check things such as fuel level, tire pressure and odometer reading from your virtual dashboard. And the connection goes both ways as your RLX can send messages to you via the mobile app, alerting you of an alarm notification for example, even if you're out of town.



EMERGENCY

In the event of an airbag deployment, AcuraLink™†,* is engineered to automatically send a signal for immediate assistance to your location‡. The on-board one-touch Assist button also gives you access to live operator assistance in the case of non-collision emergencies.

MAINTENANCE

Not only will you be notified when your next service is due via the Maintenance Minder,™ but the Automated Appointments™ feature allows you to schedule an appointment with your favourite, or local, Acura dealer directly through the AcuraLink™†,* system.

LIVE CONCIERGE

The AcuraLink™†,* Premium package gives you access to the most personalized feature of all—access to live concierge agents. One touch puts you in direct voice contact with an Acura concierge who will assist you with virtually anything from finding a point of interest; booking dinner, hotel, or flight reservations; even searching the web for answers for you while you drive.

†None of the features we describe are intended to replace the driver's responsibility to exercise due care while driving. Drivers should not use handheld devices or operate certain vehicle features unless it is safe and legal to do so. Some features have technological limitations. For additional feature information, limitations and restrictions, please visit www.acura.ca/disclaimers or refer to the vehicle's owner's manual.

††Map database covers major metropolitan areas in Canada and 48 contiguous U.S. states.

*Only compatible with certain devices and operating systems. Cellular data and/or voice charges may apply, including roaming charges and/or other amounts charged by your wireless carrier. Subscription required. One year complimentary subscription to AcuraLink Standard, AcuraLink Connect, and AcuraLink Premium included, after which fees, taxes and other charges will apply in order to continue subscription. Ask your dealer for full terms and conditions.

**Real-Time Traffic™ is only available in 13 of Canada's largest metropolitan areas and is dependent upon data location reporting of connected vehicles.

‡Vehicle or the compatible smartphone tethered via the vehicle's HandsFreeLink Bluetooth connection needs to have cellular reception.

Intelligent design has graced the Acura RLX with a spacious, comfortable and balanced cabin typically associated with a much larger luxury sedan. Finishes in the form of available soft, Milano leather-trimmed seating surfaces and wood accents complete the cabin's welcoming aura.

12-WAY POWERED AND HEATED FRONT SEATING

Finding the ideal driving position is easy with the standard heated and 12-way power adjustable front seats, including 4-way power lumbar support and programmable driver recognition memory. Ventilated front seats are available for heating and cooling on the RLX Elite.

HEATED 2ND-ROW SEATING

An additional measure of comfort on the RLX comes from the available heated rear seats. Featuring three heat settings, each seat offers a little extra cold-weather comfort for rear-seat passengers.

HEATED STEERING WHEEL

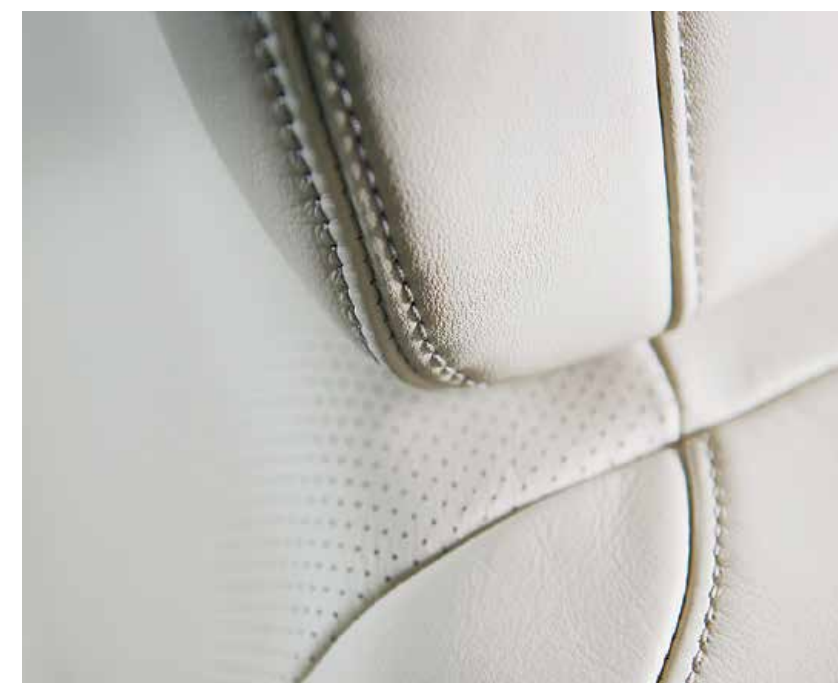
No less enticing is the availability of a heated, leather-wrapped steering wheel—a touch of more luxury for those cold winter morning drives.

ACTIVE NOISE CANCELLATION (ANC)

Discreet microphones inside the RLX cabin monitor low-frequency noise and, when detected, the Active Noise Cancellation system counteracts and cancels the disturbance with an equivalent waveform using the sound system. And acoustic glass further cocoons cabin occupants from auditory intrusion.

ACTIVE SOUND CONTROL (ASC)

Operating in unison with the Active Noise Cancellation system, Active Sound Control uses in-cabin microphones and complex electronic sensors to mitigate noise created by the engine as it goes through its rpm cycle.



SAFETY

Owning and driving a luxury automobile starts with the peace of mind that advanced safety features and innovative safety technologies afford. The RLX was meticulously designed with safety in mind, for driver and passengers alike.



ACE™ BODY STRUCTURE

The innovative Advanced Compatibility Engineering™ (ACE) body structure utilizes a high-tensile, high-efficiency steel body structure and is engineered to help provide enhanced protection from a multi-directional collision. ACE is designed to reduce the force of a frontal impact by absorbing energy over a large area and dispersing it away from you and other occupants of the cabin. ACE is also designed to help reduce occupant injuries caused by misalignment in collisions between vehicles of different sizes.

VEHICLE STABILITY ASSIST (VSA®)*

VSA with Traction Control automatically detects and corrects understeer or oversteer situations, sometimes before you're aware there's a problem. The system is designed to intuitively analyze conditions and reduce throttle and/or apply braking to individual wheels. Should a loss of traction occur on a slippery surface, Traction Control will help ensure you get underway safely.

*None of the features we describe are intended to replace the driver's responsibility to exercise due care while driving. Drivers should not use handheld devices or operate certain vehicle features unless it is safe and legal to do so. Some features have technological limitations. For additional feature information, limitations and restrictions, please visit www.acura.ca/disclaimers or refer to the vehicle's owner's manual.

ANTI-LOCK BRAKES

The 4-wheel Anti-lock Braking System¹ (ABS) helps you maintain steering control when braking hard on wet, slippery or loose surfaces, while Electronic Brake-force Distribution (EBD) and Brake Assist are designed to balance braking forces at each wheel to help compensate for cargo and passenger weight distribution inside the cabin.

AIRBAGS

A significant level of safety is achieved with seven standard airbags. The cabin of the RLX features side curtain airbags with a sensor to deploy in the event of a rollover and dual-stage, multiple-threshold front airbags (SRS). Plus, it has Smartvent™ side airbags, which are designed to deploy safely in a manner that mitigates the risk of injury to out-of-position or smaller occupants as well as a driver's side knee airbag.

U.S. model shown.

RLX

SPECIFICATIONS

EXTERIOR

ENGINE	
Engine	3.5-litre, 24-valve, Direct Injection SOHC, i-VTEC [®] aluminum-alloy V6
Horsepower	310 hp @ 6500 rpm
Torque	272 lb.-ft. @ 4500 rpm
Displacement	3471 cc
Bore and stroke	89 x 93 mm
Emissions	Tier 2 Bin 5
Compression ratio	11.5:1
Variable Cylinder Management [®] (VCM [®])	
Recommended fuel	Premium unleaded
Horsepower and torque calculations reflect SAE net, Rev. 08/04, SAE J1349 procedures.	

DRIVETRAIN

6-speed automatic transmission with Sequential SportShift[®] paddle shifters, Grade Logic Control and Sport mode Drive-by-Wire Throttle System™ Front-wheel drive

CHASSIS

18" alloy wheels
Agile Handling Assist[‡]
Amplitude Reactive Dampers
Double-wishbone, lower double-joint front suspension
Multi-link rear suspension
Power-assisted, solid rear disc brakes
Power-assisted, ventilated front disc brakes
Precision All-Wheel Steer™ system[‡]
Tires: P245/45 R18
Electric power-assisted rack-and-pinion steering (EPS)

CAPACITIES

Cargo volume (RLX and Technology/Elite/Sport Hybrid)	423/417/328 litres
Fuel tank capacity (RLX and Technology and Elite/Sport Hybrid)	70/57 litres
Passenger volume	2891 litres

SAFETY

Advanced Compatibility Engineering™ (ACE™) body structure
Anti-lock Braking System[‡] (ABS) with Electronic Brake-force Distribution (EBD) and Brake Assist
Driver's side knee airbag
Dual-stage, multiple-threshold front airbags (SRS)
Smartvent™ side airbags
Side curtain airbags
Immobilizer Theft-Deterrent System
Lower Anchors and Tethers for Children (LATCH) child-seat mounting system
Security system
Tire repair kit
Tire Pressure Monitoring System[‡] (TPMS) with location and pressure indicators
Vehicle Stability Assist[‡] (VSA[®]) with Traction Control

EXTERIOR

Heated power-adjusting side mirrors with driver recognition, reverse gear tilt-down, integrated turn indicators and expanded view driver's mirror
Front splash guards
Jewel Eye™ LED headlights
Headlamp washers
Variable intermittent windshield wipers
LED tail lamps
Power moonroof with tilt feature, auto-open/close, auto-reverse, key-off operation and sliding shade

COMFORT & CONVENIENCE

Active Noise Cancellation (ANC)/Active Sound Control (ASC)
Ambient cabin and door handle lighting
Ambient driver's and front passenger's footwell lighting
Auto-dimming rearview mirror
Automatic climate control system
Capless fueling system
Centre console
Electronic Parking Brake (EPB) with automatic brake hold
Electronically-locking glove compartment
Forward Collision Warning (FCW) system^{‡,††}
HandsFreeLink™-Bluetooth[®] wireless mobile phone interface^{‡,**} with steering wheel-mounted controls
HomeLink[®] remote system^{***}
Keyless Access System
Lane Departure Warning (LDW) system^{‡,††}
Multi-angle rearview camera[‡] with dynamic guidelines
Multi-Information Display (MID) with DOT display
On-Demand Multi-Use Display™
One-touch directional signals
Power tilt and telescoping steering column
Power windows with driver's and front passenger's auto-up/down, auto-reverse and key-off operation
Pushbutton start
Rear-seat centre armrest with locking trunk pass-through
Steering wheel-mounted audio, phone, MID and cruise controls

ENTERTAINMENT

Acura/ELS Surround[®] Premium Audio System with CD/AM/FM/SiriusXM™†† tuner, MP3/Windows Media[®] Audio compatibility, auxiliary input jack, USB device connector^{**} and 10 speakers
Bluetooth[®] Streaming Audio^{‡,**}
E-mail function^{‡,**}
SMS text message function^{‡,**}

SEATING & TRIM

12-way power adjustable driver's and front passenger's seat including 4-way power lumbar support
Driver's seat memory settings
Heated front seats
Leather-wrapped steering wheel and shift knob
Silver-plated interior trim

EXTERIOR DIMENSIONS

Curb weight (RLX/Technology/Elite/Sport Hybrid)	1788/1798/1817/1980 kg
Gross vehicle weight rating (RLX and Technology and Elite/Sport Hybrid)	2265/2440 kg
Ground clearance – full-load	96 mm
Height	1465 mm
Length	4982 mm
Track – front/rear	1632/1630 mm
Turning radius, curb to curb	12.3 m
Wheelbase	2850 mm
Width (excluding sideview mirrors)	1890 mm

INTERIOR DIMENSIONS

Headroom – front/rear	954/937 mm
Hip room – front/rear	1419/1385 mm
Legroom – front/rear	1074/985 mm
Shoulder room – front/rear	1514/1449 mm
Seating capacity	5

FUEL ECONOMY

City/Hwy/Combined	11.9/7.7/10.0 litres/100 km*
City/Hwy/Combined (Sport Hybrid)	8.0/7.5/7.7 litres/100 km*

PACKAGES

TECHNOLOGY PACKAGE

(Adds to or replaces RLX features)
19" alloy wheels
Tires: P245/40 R19

Acoustic glass
Acura Navigation System with Voice Recognition™^{‡,‡‡} and 8" display
Acura/ELS Surround[®] Premium Audio System with CD/AM/FM/SiriusXM™†† tuner, MP3/Windows Media[®] Audio compatibility, auxiliary input jack, USB device connector^{**} and 14 speakers
AcuraLink™^{‡,**,Δ} connectivity system
Blind Spot Information (BSI) system[‡]
Keyless Access System for rear doors
Power folding side mirrors
Hard disk drive (HDD) media storage
Heated rear seats
Heated steering wheel
Milano leather-trimmed interior
Rain-sensing windshield wipers
Woodgrain interior trim

ELITE PACKAGE

(Adds to or replaces Technology Package features)
Adaptive Cruise Control (ACC) with Low-Speed Follow[‡]
Auto-dimming side mirrors
Collision Mitigation Braking System™[‡] (CMBS[®])
Krell ultra-premium audio system with CD/AM/FM/SiriusXM™†† tuner, MP3/Windows Media[®] Audio compatibility, auxiliary input jack, USB device connector^{**} and 14 speakers
Lane Keeping Assist System^{‡,††} (LKAS)
Parking sensors
Power rear sunshade
Rear side sunshades
Ventilated front seats

SPORT HYBRID SUPER HANDLING ALL-WHEEL DRIVE™ (SH-AWD[®]) PACKAGE

(Adds to or replaces Elite Package features)
3-motor hybrid powertain: Front electric motor and rear twin motor unit
Total combined horsepower: 377 hp
Total combined torque: 341 lb.-ft.
Emissions: Tier 2 Bin 3
7-speed dual-clutch transmission with Sequential SportShift[®] paddle shifters, Grade Logic Control and Sport mode
Electronic gear selector
Reactive force pedal
Exclusive 19" alloy wheels
Engine idle stop-start feature
Sport Hybrid Super Handling All-Wheel Drive™[‡] (SH-AWD[®]) (replaces Precision All-Wheel Steer™[‡] system)
Dark chrome-plated grille
LED fog lights
Surround view camera system[‡]
Head-up display
Unique woodgrain interior trim
Rear-seat centre armrest (locking trunk pass-through not available on the Sport Hybrid SH-AWD[®] package)
Horsepower and torque calculations reflect SAE net, Rev. 08/04, SAE J1349 procedures.

^[S]None of the features we describe are intended to replace the driver's responsibility to exercise due care while driving. Drivers should not use handheld devices or operate certain vehicle features unless it is safe and legal to do so. Some features have technological limitations. For additional feature information, limitations and restrictions, please visit www.acura.ca/disclaimers or refer to the vehicle's owner's manual.
^[†]Only available in certain areas. Includes a no-charge trial of three months.
^[††]System operation may be affected by extreme interior heat.
^[‡]For optimal tire wear and performance, tire pressure should be checked regularly with a gauge. Do not rely solely on the monitor system.
^[‡‡]Map database covers major metropolitan areas in Canada and 48 contiguous U.S. states.

*Estimated fuel economy based on Government of Canada's new 5-cycle testing method. Your actual fuel consumption will vary based on driving habits and other factors – use for comparison only. For more information on 5-cycle testing, visit http://vehicles.nrcan.gc.ca
**Only compatible with certain devices and operating systems. Cellular data and/or voice charges may apply, including roaming charges and/or other amounts charged by your wireless carrier.
***HomeLink® can be programmed with codes of up to three remote-control devices (e.g., garage-door opener, home security system, etc.).
ΔSubscription required. One year complimentary subscription to AcuraLink Standard, AcuraLink Connect, and AcuraLink Premium included, after which fees, taxes and other charges will apply in order to continue subscription. Ask your dealer for full terms and conditions.

ACURA
MAKE IT YOURS.

*Choose from an array of genuine Acura accessories
that give you the practical luxuries and advanced styling
that will bring you together with your machine.*

PROTECTION PACKAGE

All-season floor mats
Rear splash guards
Trunk tray

REMOTE ENGINE STARTER PACKAGE

Base unit
Attachment
Key fob

Accessories listed in the packages may also
be added individually to your RLX.

ACCESSORIES AVAILABLE

All-season floor mats
Ashtray, cup-holder style
Body side molding
Car cover
Cargo net
Door edge film
Engine block heater
Hood edge deflector
Illuminated door sill trim
Rear bumper appliqué
Rear deck lid spoiler
Rear splash guards
Trunk carpet mat
Trunk tray
Trunk edge and bumper protector
Wheel locks



REAR DECK LID SPOILER



REAR SPLASH GUARDS



TRUNK TRAY



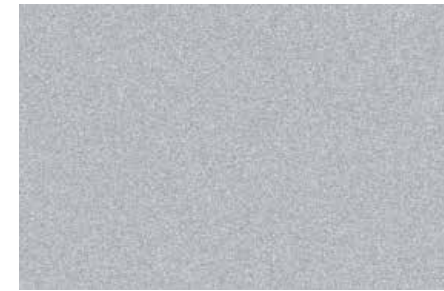
ALL-SEASON FLOOR MATS

RLX

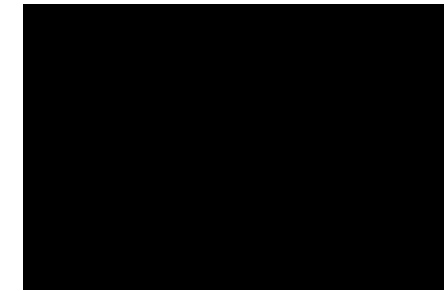
COLOUR AND TRIM GUIDE

Our colour and trim range is an extension of our commitment to craftsmanship and elegance. A palette of timeless exterior colours is complemented by equally refined interior options and a superior grade of leather trims. These are the finishing touches that elevate your relationship with your Acura, and the road, at every turn.

EXTERIOR RLX



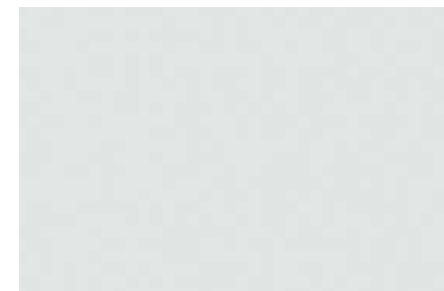
Alabaster Silver Metallic • NH-700M



Crystal Black Pearl • NH-731P



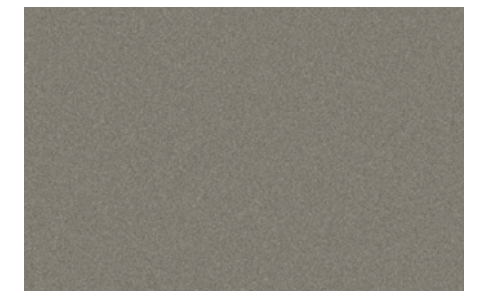
Graphite Luster Metallic • NH-782M



Bellanova White Pearl • NH-788P

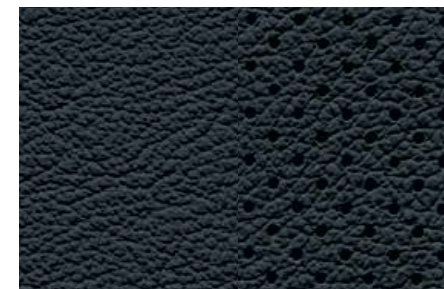


Pomegranate Pearl • R-540P



Gilded Pewter Metallic • YR-596M

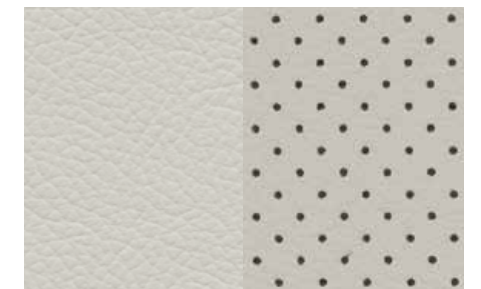
INTERIOR RLX



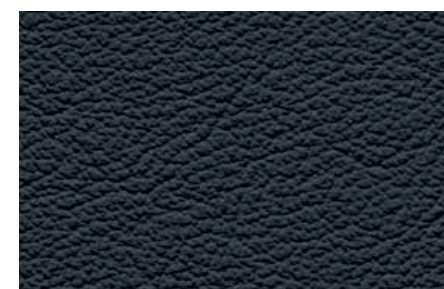
Ebony Milano Leather



Greystone Milano Leather



Seacoast Milano Leather



Ebony Leatherette

EXTERIOR COLOURS	RLX	TECHNOLOGY PACKAGE	ELITE PACKAGE	SPORT HYBRID
Alabaster Silver Metallic • NH-700M	Ebony Leatherette	Ebony or Greystone Milano Leather	Ebony or Greystone Milano Leather	Ebony Milano Leather
Crystal Black Pearl • NH-731P	Ebony Leatherette	Ebony, Greystone or Seacoast Milano Leather	Ebony, Greystone or Seacoast Milano Leather	Ebony, Greystone or Seacoast Milano Leather
Graphite Luster Metallic • NH-782M	Ebony Leatherette	Ebony or Greystone Milano Leather	Ebony or Greystone Milano Leather	Ebony or Greystone Milano Leather
Bellanova White Pearl • NH-788P	Ebony Leatherette	Ebony or Seacoast Milano Leather	Ebony or Seacoast Milano Leather	Seacoast Milano Leather
Pomegranate Pearl • R-540P	N/A	Seacoast Milano Leather	Seacoast Milano Leather	Seacoast Milano Leather
Gilded Pewter Metallic • YR-596M	N/A	Seacoast Milano Leather	Seacoast Milano Leather	Seacoast Milano Leather

At Acura, when innovation and performance meet purpose, remarkable things can be achieved. Through our commitment and continued involvement with events and organizations across Canada, we seek to create engaging and inspiring experiences for our customers and our community. Because at Acura we believe exhilaration goes beyond the driver's seat.



Acura is honoured to be the Canadian broadcast sponsor of golf's most historic and time-honoured tournament. The Masters is golf's first major open of the season and is famous for its ceremonial "Green Jacket" winner's presentation.



Mobile Clinics
Presented by Acura

Acura is proud to be the official vehicle sponsor of the CN Future Links Mobile Golf Clinics. Close to 70,000 junior golfers are expected to participate in the clinics facilitated by the ten provincial golf associations, each of which are provided a current model year MDX from Acura.

Driving a luxury vehicle should go beyond engineering and amenities. That's why Acura is committed to ensuring your ownership experience is equally luxurious. New Acura owners benefit from four-year 24-hour Roadside Assistance, which includes Dispatch Emergency Roadside Service, Emergency Lockout Service and Traffic Accident Services. See your Acura Retailer for details.

WARRANTY

Your new Acura vehicle comes with the following warranties: Major Component – 5-year/100,000-km limited warranty • Vehicle – 4-year/80,000-km Distributor's limited warranty • Rust Perforation – 5-year unlimited-distance warranty • Surface Corrosion – 4-year/80,000-km • Accessories – 4-year/80,000-km limited warranty (when installed by an authorized Acura Retailer at time of new vehicle delivery). Regular maintenance items and parts are subject to normal wear and replacement, and are not covered by warranty. Certain other items are excluded and certain conditions apply. See your Acura Retailer for details.

ACURA PLUS

Extend your worry-free ownership experience by purchasing additional coverage. Choose from Acura's flexible selection of Mechanical Coverage that extends up to 8 years or 200,000 km, whichever comes first. See your Acura Retailer for details.

LEASING AND FINANCING

Owning your Acura is easy. See your Acura Retailer for complete details on Conventional Financing.*

**A genuine service of Acura Financial Services. Conditions, restrictions and prepayment requirements might apply O.A.C.*