

IMPALA 2015



FIND **NEW** ROADS™



[facebook.com/
chevroletcanada](https://facebook.com/chevroletcanada)



[twitter.com/
chevroletcanada](https://twitter.com/chevroletcanada)



[youtube.com/
chevroletcanada](https://youtube.com/chevroletcanada)

CHEVROLET.CA





**EVERY MEMORABLE
JOURNEY BEGINS WITH
AN UNFORGETTABLE RIDE.**

Experience the harmonious blend of wants and needs. The convergence of aesthetics and aerodynamics in a stunning silhouette. Here craftsmanship puts comfort in a stunning context. Connectivity spreads its wings with standard OnStar 4G LTE¹ with Wi-Fi[®] connectivity built right in. The 2015 Impala doesn't just stand on its own with the world's leading premium sedans. It stands out entirely.

¹ Visit onstar.ca for coverage maps, details and system limitations. Services and connectivity may vary by model and conditions. OnStar with 4G LTE connectivity is available on select vehicle models and in select markets. Customers will be able to access OnStar services only if they accept the OnStar User Terms and Privacy Statement (including software terms). OnStar acts as a link to existing emergency service providers. After the trial period (if applicable), an active OnStar service plan is required.

FIND NEW ROADS™

EXTERIOR DESIGN



LAWS OF ATTRACTION.

- 1. Aesthetically pleasing design supports aerodynamic performance.*
- 2. Available LED daytime running lamps enhance visibility.*
- 3. The powerdome hood, wide chrome grille and available High-Intensity Discharge (HID) headlamps establish a confident presence.*



PURPOSEFUL DESIGN. With its sweeping roofline and sculpted body contours, Impala finesses the air with its aerodynamic styling while capturing the eye from every angle.

DAZZLING CHROME. In sunlight and under streetlights, bright chrome accents create a reflective dance that accentuates the graceful exterior lines.

WHEEL SELECTIONS. Poise meets pavement with a variety of stunning wheel choices, including available 20-in. aluminum wheels.

INTERIOR DESIGN

**“...COMFORT, ROOMINESS AND
LUXURY TOUCHES EXPECTED
OF A TRUE FLAGSHIP.”**

— CARS.COM, MARCH 2013

Impala LTZ interior in Jet Black/Mojave
with available features.



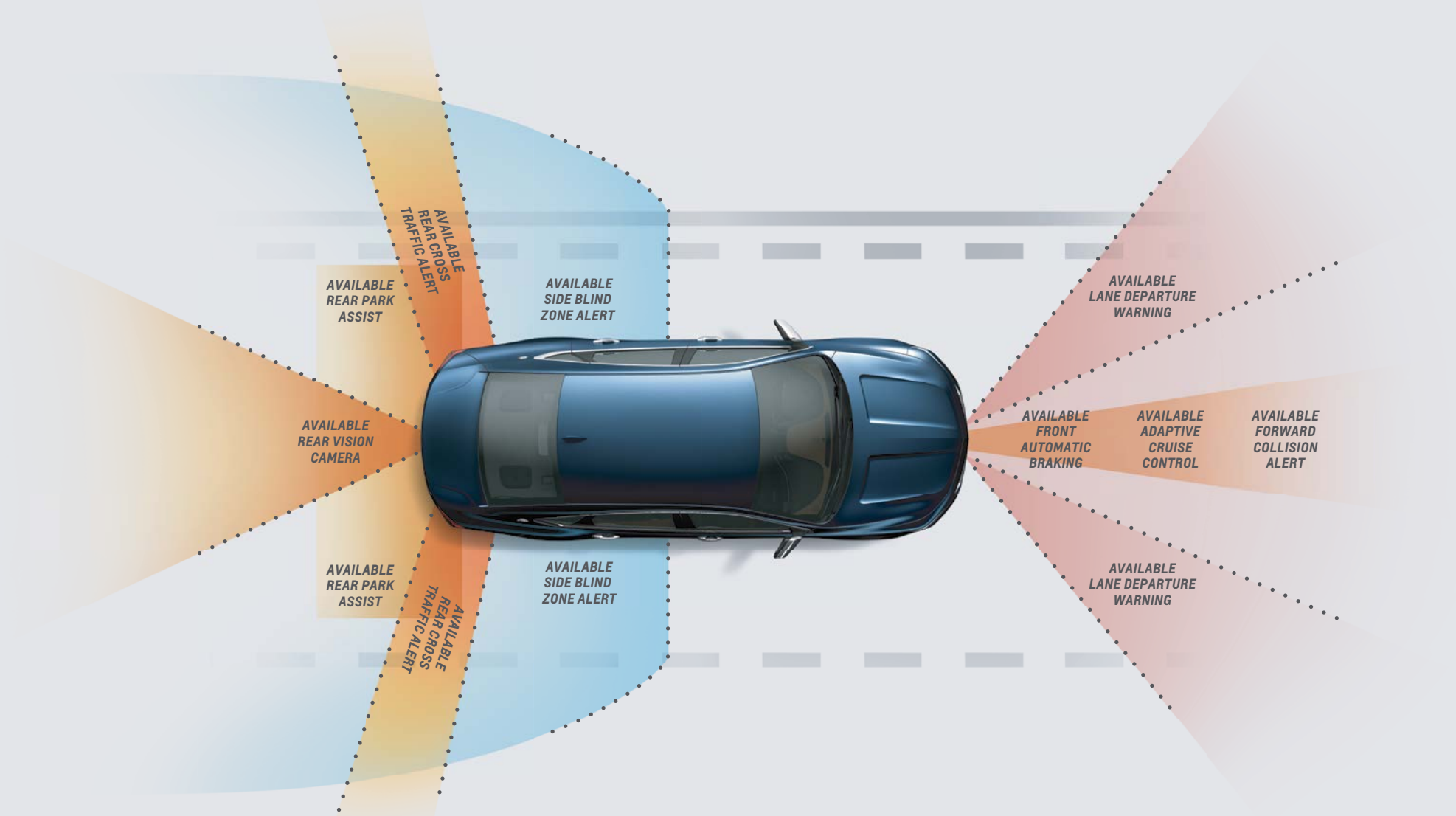
PREMIUM DETAILS. Inside Impala, meticulous French stitching and available woodgrain trim accentuate the flowing instrument panel, which wraps you in ergonomic comfort. Every last detail puts you first.

ERGONOMIC COMFORT, INTERIOR CONVENIENCE AND SPACIOUSNESS ABOUND.

- 1. Weather the storm with umbrella storage in the front door pockets.*
- 2. Get situated with available 8-way power-adjustable front seats with power lumbar control.*
- 3. Carry golf clubs and luggage with the cavernous 532 L (18.8 cu. ft.) of trunk space!*
- 4. Plug a laptop or other device into the available 120-volt outlet behind the centre console.*

¹ Cargo and load capacity limited by weight and distribution.

TECHNOLOGY



Safety features are no substitute for the driver's responsibility to operate the vehicle in a safe manner. The driver should remain attentive to traffic, surroundings and road conditions at all times. Read the vehicle Owner's Manual for more important safety information.

¹ Before making a lane change, always check the Side Blind Zone Alert display, check the exterior and interior rear-view mirrors, look over your shoulder for vehicles and hazards and start the turn signal. ² For more information, visit iihs.org/ratings.

TECH THAT PROTECTS. Some of the most impressive Impala features are the ones you can't see, including the available Advanced Safety Package with Forward Collision Alert, Side Blind Zone Alert,¹ Rear Cross Traffic Alert and Lane Departure Warning.

FORWARD COLLISION ALERT. A high-resolution camera scans for vehicles ahead and alerts you of a potential crash risk.

SIDE BLIND ZONE ALERT! Utilizing radar sensors on both sides of Impala, it identifies vehicles in your side mirror blind zones and triggers LED-lit symbols in the corresponding exterior mirrors to signal their presence.

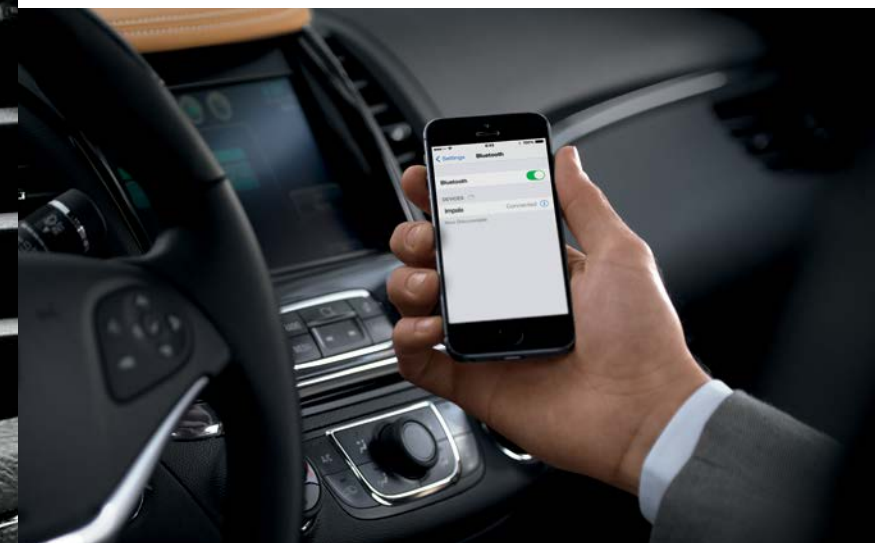
REAR CROSS TRAFFIC ALERT. Employing the same radar sensors as Side Blind Zone Alert,¹ it signals you of crossing traffic behind your Impala when backing up by sounding an alert and providing visual cues on the rear vision camera screen.

LANE DEPARTURE WARNING. If you unintentionally drift out of your lane without signalling, it sounds an audible alert to let you know.

REAR VISION CAMERA. When travelling in Reverse at low speeds, the available rear vision camera allows you to see stationary objects behind your Impala on the screen.

FULL-SPEED-RANGE ADAPTIVE CRUISE CONTROL. This available feature uses grille-mounted radar to maintain your selected cruise speed and following gap distance, automatically braking when necessary in stop-and-go traffic.

FRONT AUTOMATIC BRAKING. The 2014 Impala has earned a "Superior" rating from the Insurance Institute for Highway Safety (IIHS):² Working alongside Adaptive Cruise Control, this available feature alerts you if the vehicle ahead slows unexpectedly. If you don't react quickly enough, it automatically applies the brakes to help prevent a front-end collision.



TOTALLY CONNECTED. Available Chevrolet MyLink^{®1} with Bluetooth[®] wireless technology makes it easy to connect to calls, music, contacts and more on the go – all by using enhanced voice commands or the 203 mm (8-in.) diagonal colour touch-screen display.

SMART NAVIGATION. Get directions with OnStar^{®2} Turn-by-Turn Navigation, standard for six months. Or go for the available Chevrolet MyLink¹ Radio with Navigation, featuring full GPS navigation,³ along with a 3-month trial of SiriusXM NavTraffic.^{™4}

SIRI EYES FREE.⁵ For compatible iPhone[®] users, the system allows limited hands-free interactions for those times when you need to read or compose text messages, make phone calls or play your favourite music.

STREAMING MUSIC. Available Chevrolet MyLink¹ allows you to stream music from online sources like Stitcher SmartRadio^{®6} or from playlists stored on your compatible smartphone. You can also enjoy listening to your 3-month trial of SiriusXM Satellite Radio.^{™4}

DRAG AND DROP. To customize the home screen, simply drag and drop the application icons – just like you would on a smartphone or tablet.

HIDDEN STORAGE. The available 203 mm (8-in.) diagonal colour touch-screen includes hidden, lockable storage behind the display to stow valuables safely out of reach. It also includes a USB port⁷ for charging your smartphone.

¹ Full functionality requires compatible Bluetooth and smartphone, and USB connectivity for some devices. Visit MyLink.Chevrolet.ca for more details. ² Requires OnStar Directions & Connections Plan. Visit onstar.ca for coverage maps. Services vary by model. ³ At the time of printing, detailed map coverage is available for most major urban areas of the United States and for certain metropolitan areas of Canada (Vancouver, Calgary, Edmonton, Winnipeg, Windsor, London, Toronto, Ottawa, Montreal, Quebec City and Halifax). Coverage is significantly limited outside these areas. ⁴ Available in 10 Canadian provinces and the 48 contiguous United States. Subscription sold separately after trial period. If you decide to continue your service at the end of your trial subscription, the plan you choose will automatically renew and bill at then-current rates until you call 1.877.209.0079 to cancel. Other fees and taxes will apply. All fees and programming subject to change. See SiriusXM "Terms & Conditions" and complete details at siriusxm.ca. ⁵ Requires available Chevrolet MyLink and compatible iPhone running iOS 6 or later. ⁶ Data plan rates apply. ⁷ Not compatible with all devices.

PERFORMANCE



305^{HP} / 264^{LB.-FT.} TORQUE

305-HP 3.6L V6 ENGINE.

0 to 96 km/h (0 to 60 mph) in 6.8 seconds!

A highway fuel consumption rating of 8.2 L/100 km.²

Direct Injection improves power and efficiency while lowering emissions.

Variable Valve Timing provides near-peak torque over a wider rpm range.

196-HP 2.5L 4-CYLINDER ENGINE.

This engine combines Direct Injection, Variable Valve Timing and new stop/start technology to help save on gas. Stop/start technology can automatically shut off the engine when stopped and enables a smooth transition when the brake pedal is released.

PRECISION HANDLING. Premium electric rack-and-pinion steering provides crisp, responsive handling. The tight steering radius is enhanced by an available variable-effort feature, which increases power assistance during low-speed manoeuvres.

¹ Based on GM testing. ² 2015 Impala equipped with available 3.6L V6 engine. Fuel consumption estimates based on GM preliminary testing in accordance with new 2015 Model Year Government of Canada approved test methods. Refer to vehicles.nrcan.gc.ca for details. Your actual fuel consumption may vary.



SAFETY



OVERALL VEHICLE SCORE FOR SAFETY.

— U.S. NATIONAL HIGHWAY TRAFFIC SAFETY ADMINISTRATION¹



¹ U.S. Government 5-Star Safety Ratings are part of the National Highway Traffic Safety Administration's (NHTSA's) New Car Assessment Program (www.SaferCar.gov). ² Always use safety belts and the correct restraint for your child's age and size. Even in vehicles equipped with the Passenger Sensing System, children are safer when properly secured in a rear seat in the appropriate infant, child or booster seat. Never place a rear-facing infant restraint in the front seat of any vehicle equipped with a passenger airbag. See the Owner's Manual and the child safety seat instructions for more information. ³ Visit onstar.ca for coverage maps, details and system limitations. Services and connectivity may vary by model and conditions. OnStar with 4G LTE connectivity is available on select vehicle models and in select markets. Customers will be able to access OnStar services only if they accept the OnStar User Terms and Privacy Statement (including software terms). OnStar acts as a link to existing emergency service providers. After the trial period (if applicable), an active OnStar service plan is required. ⁴ OnStar acts as a link to existing emergency service providers. Not all vehicles can transmit all crash data. ⁵ Access is available for five years from the eligible new vehicle delivery date and is transferable. Does not include any Emergency Services or any other OnStar services. Terms and conditions apply. To cancel OnStar RemoteLink Key Fob Services (or OnStar Vehicle Diagnostics for eligible vehicles) or if your vehicle is sold, you must contact OnStar at 1.888.4.ONSTAR (1.888.466.7827). Subsequent owners will be able to activate the remaining term. Please visit onstar.ca/mobile for vehicle availability, system limitations and further details. ⁶ Available on select Apple, Android, BlackBerry and Windows devices. Requires an active OnStar service plan. Services vary by device, vehicle, conditions and the type of service plan you have. Please visit onstar.ca/mobile for vehicle availability, system limitations and further details.

FIVE-STAR SAFETY. Impala received the highest possible 5-Star Overall Vehicle Score for safety from the U.S. National Highway Traffic Safety Administration (NHTSA):

CORE STRENGTH. With high-strength steel forming a rigid structure around the passenger compartment and 10 standard airbags,² Impala establishes a solid foundation for safety.

ONSTAR³ WITH AUTOMATIC CRASH RESPONSE⁴ In many crashes, built-in sensors can automatically alert an OnStar[®] Advisor, who is connected to your Impala to see if you need help. Even if you don't respond, an OnStar Advisor can use GPS technology to pinpoint your exact location and request emergency help.

REMOTELINK KEY FOB SERVICES⁵ These services are a component of the OnStar RemoteLink[®] app,⁶ which gives you access to features such as locking and unlocking your doors — even when you are kilometres away from your vehicle. They come standard for five years on OnStar-equipped 2015 vehicles.

INTERNET IN YOUR IMPALA. Chevrolet is the first and only car company to bring built-in OnStar 4G LTE³ with Wi-Fi[®] to cars, trucks and crossovers, allowing drivers the ability to seamlessly connect their smart devices and vehicles to the Internet.⁷

THE ULTIMATE MOBILE WI-FI HOTSPOT. Whenever your Impala is on, available OnStar 4G LTE Wi-Fi is on too. It offers great signal quality and bandwidth for up to seven devices.⁷

FAST, EASY, RELIABLE. The strong signal means you have a reliable connection. It's automatically on after initial setup and ready to connect to your mobile devices.⁷

⁷ Devices must be WPA2 compliant with active OnStar service and data plan. Wi-Fi devices manufactured prior to 2006 may not be compatible. Please consult your device manufacturer for information regarding the WPA2 security protocol and Wi-Fi device compatibility. Vehicle must be started or in accessory mode to access Wi-Fi. Visit onstar.ca for system details and limitations.

INTRODUCING ONSTAR WITH 4G LTE WI-FI.

Connected by  4G LTE





CHEVROLET COMPLETE CARE We're with you all the way. Chevrolet Complete Care reflects our commitment to you and your new Impala. Please visit chevrolet.ca or see your dealer for full details.

- 2-year/40,000 km¹ Complimentary Oil Changes²
- 3-year/60,000 km¹ New Vehicle Limited Warranty
- 5-year/160,000 km¹ Powertrain Component Limited Warranty, with \$0 deductible on repairs and the warranty is fully transferable at no charge
- 5-year/160,000 km¹ Courtesy Transportation
- 5-year/160,000 km¹ 24/7 Roadside Assistance
- 6-year/160,000 km¹ rust-through perforation coverage
- 8-year/130,000 km¹ coverage on catalytic converters and Powertrain Control Modules (PCMs)
- OnStar³ with the Directions & Connections Plan for 6 months
- OnStar Basic Plan⁴ for 5 years on most Chevrolet vehicles – includes RemoteLink Key Fob Services to remotely start and lock/unlock your vehicle and activate your horn and lights from anywhere. Plus, get OnStar Vehicle Diagnostics⁵ and Dealer Maintenance Notification to make service scheduling simple. For Emergency and Advisor-based services, check out our additional available plans.

OTHER OWNERSHIP PRIVILEGES AND PROGRAMS*

- GM Protection Plan (GMPP) – the only extended service plan backed by the resources and commitment of General Motors, GMPP may be purchased at the time of sale or subsequently during the New Vehicle Limited Warranty period.
- Chevrolet Certified Service – to help your Chevrolet vehicle live up to its performance promise, Chevrolet Certified Service – found exclusively at your Chevrolet dealer – is there. With all the engineering excellence in your vehicle, GM-trained technicians have the expertise to care for all of it.
- Chevrolet Owner Centre – as an owner, take advantage of the Chevrolet Owner Centre. This online owner's destination gives you access to contests, current offers and the latest driving and maintenance tips. Find out more at chevroletowner.ca.

¹ Whichever comes first. Additional conditions and limitations apply. See your dealer for details. ² Limit of four complimentary Lube-Oil-Filter services in total. Fluid top-offs, inspections, tire rotations, wheel alignments and balancing, etc., are not covered. ³ Visit onstar.ca for coverage maps, details and system limitations. Services and connectivity may vary by model and conditions. OnStar with 4G LTE connectivity is available on select vehicle models and in select markets. Customers will be able to access OnStar services only if they accept the OnStar User Terms and Privacy Statement (including software terms). OnStar acts as a link to existing emergency service providers. After the trial period (if applicable), an active OnStar service plan is required. ⁴ The OnStar Basic Plan is available for five years from the date of delivery of the eligible new 2015 Model Year vehicle and is transferable. It includes Vehicle Diagnostics (capabilities vary by model), Dealer Maintenance Notification and access to RemoteLink Key Fob Services (available on select Apple, Android, BlackBerry and Windows devices). Please visit onstar.ca/mobile for more details. The OnStar Basic Plan does not include any Emergency Services, Automatic Crash Response, Stolen Vehicle Assistance, live Advisor service, or Hands-Free Calling. These and other services are available under a paid plan. See OnStar User Terms and Privacy Statement (including software terms) for more details. If you sell your vehicle or wish to cancel use of Basic Plan Services, you must contact OnStar at 1.888.4.ONSTAR (1.888.466.7827). ⁵ Capabilities vary by model. Visit onstar.ca for details and system limitations. ⁶ Conditions and limitations apply. ⁷ Subject to eligibility. ⁸ Program subject to change.

the model year for any product, for any reason, or to start and end model years at different times. Certain vehicle features may lose their usefulness over time due to obsolescence from technological changes. Unless otherwise noted, all claims based on the latest available competitive information. Excludes other GM vehicles.

ENGINES Chevrolet products are equipped with engines produced by GM Powertrain or other suppliers to GM worldwide. The engines in Chevrolet products may also be used in other GM makes and models.

ASSEMBLY Chevrolet vehicles and their components are assembled or produced by different operating units of General Motors, its subsidiaries or suppliers to GM worldwide. We sometimes find it necessary to produce Chevrolet vehicles with different or differently sourced components than originally scheduled. Since some options may be unavailable when your vehicle is assembled, we suggest you verify that your vehicle includes the equipment you ordered and that, if there were changes, they are acceptable to you.

FLEET ORDERS Some standard content may be deleted on fleet orders. See dealer for details.

AN IMPORTANT NOTE ABOUT ALTERATIONS AND WARRANTIES Installations or alterations to the original equipment vehicle (or chassis) as distributed by General Motors are not covered by the General Motors New Vehicle Limited Warranty. The special body company, assembler, equipment installer or upfitter is solely responsible for warranties on the body or equipment and any alterations (or any effect of the alterations) to any of the parts, components, systems or assemblies installed by GM. General Motors is not responsible for the safety or quality of design features, materials or workmanship of any alterations by such suppliers.

TRADEMARKS The marks appearing in this brochure including, but not limited to, General Motors, GM, Chevrolet, the Chevrolet emblem, Impala, the Impala emblem and their respective logos, emblems, slogans and vehicle model names and body designs; and other marks such as Duralife, ECOTEC, Find New Roads, MyLink, Solar-Ray and StabiliTrak are trademarks of General Motors LLC and/or General Motors of Canada Limited, its subsidiaries, affiliates or licensors. ©Copyright 2014 General Motors of Canada Limited. All rights reserved. OnStar, the OnStar emblem and OnStar RemoteLink are registered trademarks of OnStar, LLC. Apple, iPhone and Siri are trademarks of Apple Inc., registered in the U.S. and other countries. BlackBerry is a registered trademark of BlackBerry Limited. Bluetooth is a registered trademark of Bluetooth SIG, Inc. Bose and Centerpoint are registered trademarks of the Bose Corporation. Facebook is a registered trademark of Facebook Inc. Gracenote is a registered trademark of Gracenote, Inc. SiriusXM, the SiriusXM logo, channel names and logos are trademarks of SiriusXM Radio Inc. Stitcher and Stitcher SmartRadio are registered trademarks of Stitcher SmartRadio, Inc. TheftLock is a registered trademark of Delphi Technologies, Inc. Twitter is a trademark of Twitter, Inc. YouTube is a registered trademark and Android and Google Play are trademarks of Google Inc. Wi-Fi is a registered trademark of Wi-Fi Alliance.

COPYRIGHT ©Copyright 2014 General Motors of Canada Limited. All rights reserved. All text, images, graphics, and other materials in this brochure are subject to the copyright and other intellectual property rights of General Motors LLC and/or General Motors of Canada Limited. These materials may not be reproduced, distributed or modified without the express written permission of General Motors LLC and/or General Motors of Canada Limited.

Printed in USA, August 2014

SELECT VEHICLE FEATURES

IMPALA LS Impala LS (1LS) includes these standard features:
196 hp ECOTEC® 2.5L 4-cylinder engine with Direct Injection and Variable Valve Timing (VVT) with Auto Stop/Start feature
Oil life monitoring system
6-speed automatic transmission with manual mode
4-wheel disc brakes with Duralife™ brake rotors, ABS, Panic Brake Assist, cornering brake control and Hill Start Assist
StabiliTrak® Electronic Stability Control System
Traction control
4-wheel independent suspension
18-in. wheels with fascia-spoke wheel covers
Heated, power exterior mirrors with integrated turn signals and ground illumination
Remote keyless entry system
Content theft alarm
10 airbags
Driver Information Centre with colour display
Air conditioning with humidity sensor, air filtration system and particulate/pollen filter
Power windows and programmable door locks
Tilt and telescopic adjustable steering column
Cruise control
Steering wheel-mounted Bluetooth®, cruise and audio system controls
Front bucket seats
Premium cloth seating surfaces
Power 8-way driver-seat adjuster with power 4-way lumbar adjuster
Power front passenger-seat height adjuster
60/40 split-folding rear seatback with rear centre armrest
AM/FM stereo, CD player, auxiliary audio input jack and 107 mm (4.2-in.) colour display screen
6-speaker audio system
SiriusXM Satellite Radio™ ¹
USB port ² ; single in centre console
Bluetooth hands-free phone connectivity
OnStar ³ with 6 months of the Directions & Connections Plan featuring Turn-by-Turn Navigation and OnStar RemoteLink ⁴
OnStar 4G LTE ³ with Wi-Fi [®] hotspot capability ⁵

IMPALA LT (1LT) Impala LT (1LT) enhances LT (1LT) features with:
18-in. painted-aluminum wheels
Dual-outlet exhaust system with hidden tips

IMPALA LT (2LT) Impala LT (2LT) enhances LT (1LT) features with:
18-in. painted-aluminum wheels
Dual-outlet exhaust system with hidden tips

¹ Available in 10 Canadian provinces and the 48 contiguous United States. Subscription sold separately after trial period. If you decide to continue your service at the end of your trial subscription, the plan you choose will automatically renew and bill at then-current rates until you call 1.877.209.0079 to cancel. Other fees and taxes will apply. All fees and programming subject to change. See SiriusXM "Terms & Conditions" and complete details at siriusxm.ca. ² Not compatible with all devices. ³ Visit onstar.ca for coverage maps, details and system limitations. Services and connectivity may vary by model and conditions. OnStar with 4G LTE connectivity is available on select vehicle models and in select markets. Customers will be able to access OnStar services only if they accept the OnStar User Terms and Privacy Statement (including software terms).

IMPALA LT (1LT) (CONTINUED)
Dual-zone automatic climate controls
Leather-wrapped steering wheel and shift knob
Premium cloth/leatherette seating surfaces
4-way adjustable front-seat head restraints
2-way adjustable rear-seat head restraints
Power 2-way front passenger-seat lumbar adjuster
Chevrolet MyLink® Radio infotainment system with 203 mm (8-in.) colour touch-screen display
USB ports ² ; multiple
Bluetooth wireless audio streaming
SD memory card reader.

IMPALA LT (2LT) Impala LT (2LT) enhances LT (1LT) features with:
305 hp 3.6L DOHC V6 engine with Direct Injection and Variable Valve Timing (VVT).

IMPALA LTZ (1LTZ) Impala LTZ (1LTZ) enhances LT (1LT) features with:
Forward Collision Alert
Lane Departure Warning and Side Blind Zone Alert ⁷
Rear park assist and Rear Cross Traffic Alert
Rear vision camera
LED daytime running lamps and High-Intensity Discharge (HID) headlamps
Chrome exterior mirror caps
Chrome door handles
Lower bodyside chrome mouldings
19-in. machined-face aluminum wheels
Dual-outlet exhaust system with bright tips integrated into fascia
Passive Entry System with Keyless Push-Button Start
Remote vehicle starter system
Cargo convenience net
Leather-appointed seating surfaces
Heated front bucket seats
Power 8-way front passenger-seat adjuster
Ambient lighting system.

IMPALA LTZ (2LTZ) Impala LTZ (2LTZ) enhances LTZ (1LTZ) features with:
305 hp 3.6L DOHC V6 engine with Direct Injection and Variable Valve Timing (VVT)
Power sunroof with sunshade.

DIMENSIONS



1580 mm (62.2 in.)
1854 mm (73.0 in.)

1575 mm (62.0 in.)

1496 mm (58.9 in.)



2837 mm (111.7 in.)

5113 mm (201.3 in.)

INTERIOR, MM (IN.) FRONT/REAR	
Headroom	1013/950 (39.9/37.4)
Legroom	1163/1011 (45.8/39.8)
Shoulder Room	1471/1445 (57.9/56.9)
Hip Room	1394/1374 (54.9/54.1)
CAPACITIES	
Trunk, L (cu. ft.)	532 (18.8)
Fuel Tank, L (imp. gal.)	70 (15.4)
CURB WEIGHT, KG (LB.)	
– LS	1661 (3662)
– LT (1LT)	1670 (3682)
– LT (2LT)	1717 (3785)
– LTZ (1LTZ)	1722 (3796)
– LTZ (2LTZ)	1754 (3867)

OnStar acts as a link to existing emergency service providers. After the trial period (if applicable), an active OnStar service plan is required. ⁴ Available on select Apple, Android, BlackBerry and Windows devices. Requires an active OnStar service plan. Services vary by device, vehicle, conditions and the type of service plan you have. Please visit onstar.ca/mobile for vehicle availability, system limitations and further details. ⁵ Devices must be WPA2 compliant with active OnStar service and data plan. Wi-Fi devices manufactured prior to 2006 may not be compatible. Please consult your device manufacturer for information regarding the WPA2 security protocol and Wi-Fi device compatibility. Visit onstar.ca for details and system limitations. ⁶ Full functionality requires compatible Bluetooth and smartphone, and USB connectivity for some devices. ⁷ Before making a lane change, always check the Side Blind Zone Alert display, check the exterior and interior rear-view mirrors, look over your shoulder for vehicles and hazards and start the turn signal.

SPECIFICATIONS

	LS	LT	L TZ
SAFETY AND SECURITY			
Airbags <ul style="list-style-type: none">driver and front-passenger, dual-stage, frontal with Passenger Sensing System and airbag suppression driver and front-passenger, seat-mounted side-impact driver and front-passenger, knee protection front-to-rear, outboard seating positions, head curtain side-impact rear passenger outboard seating positions, seat-mounted side-impact	●	●	●
Door locks – rear doors, child-security, electronic	●	●	●
Forward Collision Alert	–	○ ¹	●
Lane Departure Warning	–	○ ¹	●
OnStar ² In-Vehicle Communications and Assistance Service <ul style="list-style-type: none">includes 6 months of the Directions & Connections Plan with Turn-by-Turn Navigation and OnStar RemoteLink™³	●	●	●
Rear Cross Traffic Alert	–	○ ¹	●
Safety restraints <ul style="list-style-type: none">3-point belts for all seating positions, front safety belt pre-tensioners, dual-mode retractors and shoulder belt height adjusters LATCH (Lower Anchors and Top tethers for CHildren), rear seats	●	●	●
Security system – content theft alarm, audible/visible, programmable	●	●	●
Side Blind Zone Alert ⁴	–	○ ¹	●
StabiliTrak – Electronic Stability Control System	●	●	●
Theft-deterrent system – electronic immobilizer	●	●	●
Traction control – electronic, full-function, all-speed	●	●	●

● STANDARD ○ AVAILABLE – NOT AVAILABLE PEG PREFERRED EQUIPMENT GROUP

	LS	LT	L TZ
MECHANICAL			
Battery – maintenance-free with run-down protection	●	●	●
Brakes <ul style="list-style-type: none">power, 4-wheel disc with Duralife™ rotors 4-wheel Anti-lock Braking System (ABS) with Panic Brake Assist, cornering brake control and Hill Start Assist	●	●	●
Engine <ul style="list-style-type: none">ECOTEC 2.5L I-4 with VVT and Direct Injection with Auto Stop/Start feature Horsepower – 196 @ 6300 rpm; Torque – 186 lb.-ft. @ 4400 rpm 3.6L DOHC V6 with VVT and Direct Injection Horsepower – 305 @ 6800 rpm; Torque – 264 lb.-ft. @ 5200 rpm	●	●	●
Engine – block heater	○	○	○
Exhaust system <ul style="list-style-type: none">aluminized stainless steel single-outlet, hidden dual-outlet, hidden dual-outlet with bright tips, integrated into fascia	●	●	●
Steering – power, electric, rack-and-pinion, variable-assist	●	●	●
Suspension – front MacPherson strut/rear 4-link	●	●	●
Transmission – 6-speed automatic with overdrive and manual mode	●	●	●
Vehicle starter system – remote	–	○ ⁷	●

	LS	LT	L TZ
EXTERIOR			
Door handles <ul style="list-style-type: none">body-colour chrome	●	●	–
Glass <ul style="list-style-type: none">acoustic-laminated windshield and front-side solar absorbing	●	●	●
Lighting <ul style="list-style-type: none">daytime running lamps with exterior automatic lamp control LED daytime running lamps, upper and lower auxiliary with exterior automatic lamp control halogen headlamps High-Intensity Discharge (HID) headlamps	●	●	–
Mirrors <ul style="list-style-type: none">body-colour caps chrome caps power remote control, heated with integrated turn signal indicators and ground illumination driver side auto-dimming mirror	●	●	–
Mouldings – lower bodyside chrome	–	–	●
Park assist – rear, obstacle detection with audible warning	○ ⁸	○ ⁷	●
Rear vision camera	–	○ ⁷	●
Spoiler – rear	–	○ ¹⁰	–
Sunroof – power, tilt/sliding glass panel, with sunshade and express-open feature	–	○ ¹¹	○ ^{6,12}
Tires <ul style="list-style-type: none">P235/50R18 all-season[†] P245/45R19 all-season[†] P245/40R20 all-season[†]	●	●	–

	LS	LT	L TZ
EXTERIOR (CONTINUED)			
Wheels <ul style="list-style-type: none">18" steel with fascia-spoke wheel cover 18" painted-aluminum 19" painted-aluminum 19" machined-face aluminum 20" aluminum	●	–	–
Windshield wipers – flat-blade, 2-speed with variable delay (intermittent)	●	●	●
INTERIOR			
Climate control <ul style="list-style-type: none">air conditioning automatic, dual-zone climate controls with rear-seat outlets humidity sensor air filtration system, particulate/pollen filter rear floor heating and cooling ducts	●	–	–
Console <ul style="list-style-type: none">front floor without covered storage front floor with covered storage	●	–	–
Cruise control <ul style="list-style-type: none">electronic, steering wheel-mounted controls Adaptive Cruise Control¹⁵ automatically adjusts speed and maintains a pre-set following distance with steering wheel-mounted controls (includes Front Automatic Braking)	●	●	●
Floor mats <ul style="list-style-type: none">front and rear, carpeted front and rear, premium carpeted	●	●	●
Instrumentation <ul style="list-style-type: none">analogue gauges (includes speedometer, tachometer, coolant temperature and fuel gauges) Driver Information Centre (includes colour display with compass, average speed, instantaneous and average fuel consumption, fuel range, oil life monitoring system, tire pressure monitoring system, vehicle programmable features and message centre)	●	●	●
Lighting <ul style="list-style-type: none">dome, delayed entry/exit, theatre dimming, front and rear, glovebox and trunk ambient lighting system, doors and instrument panel	●	●	●
Locks <ul style="list-style-type: none">power, programmable with lock-out protection remote keyless entry system with panic feature Passive Entry System includes door unlock/lock entry, keyless Push-Button Start and panic feature	●	●	–
Mirror <ul style="list-style-type: none">rear-view, manual day/night rear-view, auto-dimming	●	●	●
Power outlets <ul style="list-style-type: none">12-volt, three, in front of console, inside floor console and on rear of floor console 120-volt AC 3-prong household outlet on rear of floor console	●	●	●

	LS	LT	L TZ
INTERIOR (CONTINUED)			
Steering column <ul style="list-style-type: none">tilt and telescopic adjustable, manual tilt and telescopic adjustable, power	●	●	●
Steering wheel <ul style="list-style-type: none">4-spoke with Bluetooth[®] cruise and audio system controls leather-wrapped, includes leather-wrapped shifter heated	●	●	●
Trunk <ul style="list-style-type: none">cargo convenience net release, power remote	○ ²⁰	○ ²¹	●
Windows – power, driver express-up/down, express-down all other windows and passenger lock-out features	●	●	●
SEATS			
Reclining front bucket seats <ul style="list-style-type: none">with premium cloth seating surfaces with premium cloth/leatherette seating surfaces with sueded microfibre seating surfaces with leather-appointed seating surfaces	●	–	–
Power 8-way driver-seat adjuster with power 4-way lumbar adjuster	●	●	●
Front-passenger seat <ul style="list-style-type: none">with power height adjuster with power 2-way lumbar adjuster with power 8-way seat adjuster	●	●	–
Head restraints <ul style="list-style-type: none">front, 2-way adjustable (up/down) front, 4-way adjustable (up/down – fore/aft) rear, 2-way adjustable rear, 2-way adjustable and foldable	●	–	–
Heated front bucket seats	–	○ ²¹	●
Heated and cooled front bucket seats	–	–	○ ⁸
Memory Package – 2-position driver seat, exterior rear-view mirrors and power-adjustable tilt and telescoping steering column	–	–	○ ⁸
Seatback – rear, 60/40 split-folding and rear centre armrest with storage	●	●	●
ENTERTAINMENT			
AM/FM stereo with CD player, MP3 playback, seek up/down, auxiliary audio input jack, TheftLock [®] digital clock and 107 mm (4.2-in.) diagonal colour display screen	●	–	–
Chevrolet MyLink ²² Radio infotainment system – includes 203 mm (8-in.) diagonal colour touch-screen display,AM/FM stereo with CD player, MP3 playback, seek up/down, auxiliary audio input jack, TheftLock, digital clock, personal media connectivity by Bluetooth to vehicle audio system; voice-activated technology for audio, phone, phone book and music selection; colour touch-screen interface display; Gracenote [®] music database and Stitcher SmartRadio ^{®23} compatibility	–	●	●
Chevrolet MyLink ²² Radio with Navigation ²⁴ and SiriusXM NavTraffic™ ²⁵	–	○ ¹⁸	○ ²⁶

	LS	LT	L TZ
ENTERTAINMENT (CONTINUED)			
OnStar 4G LTE ² with Wi-Fi [®] hotspot capability ²⁷	●	●	●
Motorized up/down touch-screen with access to hidden storage area and USB port ²⁸	–	●	●
6-speaker audio system	●	●	●
Bluetooth <ul style="list-style-type: none">hands-free phone connectivity wireless audio streaming	●	●	●
Memory card – SD reader located in centre console	–	●	●
SiriusXM Satellite Radio™ ²⁵	●	●	●
USB ports ²⁸ <ul style="list-style-type: none">one, in centre console three, two in centre console, one behind touch-screen	●	–	–

AVAILABLE PACKAGES

Advanced Safety Package – includes Forward Collision Alert, Rear Cross Traffic Alert, Lane Departure Warning and Side Blind Zone Alert⁴

LS Package – includes rear park assist, manual foldable rear-seat head restraints and cargo net

LT Convenience Package – includes rear park assist, rear vision camera, remote vehicle starter system, universal home remote 3-channel programmable transmitter, interior auto-dimming rear-view mirror, premium carpeted front and rear floor mats and carpeted trunk mat

L TZ Comfort and Convenience Package – includes exterior driver-side auto-dimming mirror, heated and cooled front bucket seats, heated steering wheel, power-adjustable tilt and telescopic steering column, 2-position driver Memory Package, universal home remote 3-channel programmable transmitter, interior auto-dimming rear-view mirror, premium carpeted front and rear floor mats and carpeted trunk mat (includes power sunroof with PEG 1LZ)

Navigation Package – includes Chevrolet MyLink Radio²² with Navigation²⁴ and Passive Entry System with keyless Push-Button Start

Premium Audio and Sport Wheels Package – includes premium 11-speaker Bose[®] Centerpoint[®] surround sound audio system, ambient door and instrument panel lighting, 120-volt AC 3-prong household power outlet, 19" aluminum wheels, P245/45R19 all-season[†] tires and rear spoiler

Premium Audio Package – includes premium 11-speaker Bose Centerpoint surround sound audio system and 120-volt AC 3-prong household power outlet

Premium Seating Package – includes sueded microfibre seating surfaces, heated front bucket seats, power 8-way front-passenger seat and cargo net

^[1] Included with available Advanced Safety Package.
^[2] Visit onstar.ca for coverage maps, details and system limitations. Services and connectivity may vary by model and conditions. OnStar with 4G LTE connectivity is available on select vehicle models and in select markets. Customers will be able to access OnStar services only if they accept the OnStar User Terms and Privacy Statement (including software terms). OnStar acts as a link to existing emergency service providers. After the trial period (if applicable), an active OnStar service plan is required.
^[3] Available on select Apple, Android, BlackBerry and Windows devices. Requires an active OnStar service plan. Services vary by device, vehicle, conditions and the type of service plan you have. Please visit onstar.ca/mobile for vehicle availability, system limitations and further details.
^[4] Before making a lane change, always check the Side Blind Zone Alert display, check the exterior and interior rear-view mirrors, look over your shoulder for vehicles and hazards and start the turn signal.
^[5] Included with PEG 2LT.
^[6] Included with PEG 2LZ.
^[7] Included with available LT Convenience Package.
^[8] Included with available LTZ Comfort and Convenience Package.
^[9] Included with available LS Convenience Package.
^[10] Included with available Premium Audio and Sport Wheels Package.
^[11] Requires available LT Convenience Package, Advanced Safety Package, Premium Seating Package, Premium Audio and Sport Wheels Package or Navigation Package.
^[12] Included with available LTZ Comfort and Convenience Package on PEG 1LZ.
^[13] Included with available 20-in. aluminum wheels.
^[14] Includes P245/40R20 all-season† tires; requires available Chevrolet MyLink Radio with Navigation. Available on PEG 2LZ.
^[15] Adaptive Cruise Control is no substitute for the driver's personal responsibility to operate the vehicle in a safe manner. The driver needs to remain attentive to traffic and road conditions and provide the steering, braking or other inputs necessary to retain control of the vehicle.
^[16] Requires available 20-in. aluminum wheels. Available on PEG 2LZ.
^[17] Compass not included on LS.
^[18] Included with available Navigation Package.
^[19] Included with available Premium Audio Package.
^[20] Included with available LS Convenience Package.
^[21] Included with available Premium Seating Package.
^[22] Full functionality requires compatible Bluetooth and smartphone, and USB connectivity for some devices. Visit MyLink.Chevrolet.ca for more details.
^[23] Data plan rates apply.
^[24] At time of printing, detailed map coverage is available for most major urban areas of the United States and for certain metropolitan areas of Canada (Vancouver, Calgary, Edmonton, Winnipeg, Windsor, London, Toronto, Ottawa, Montreal, Quebec City and Halifax). Coverage is significantly limited outside these areas.
^[25] Available in 10 Canadian provinces and the 48 contiguous United States. Subscription sold separately after trial period. If you decide to continue your service at the end of your trial subscription, the plan you choose will automatically renew and bill at then-current rates until you call 1-877-209-0079 to cancel. Other fees and taxes will apply. All fees and programming subject to change. See SiriusXM "Terms & Conditions" and complete details at siriusxm.ca.
^[26] Requires available Premium Audio Package.
^[27] Devices must be WPA2 compliant with active OnStar service and data plan. Wi-Fi devices manufactured prior to 2006 may not be compatible. Please consult your device manufacturer for information regarding the WPA2 security protocol and Wi-Fi device compatibility. Vehicle must be started or in accessory mode to access Wi-Fi. Visit onstar.ca for system details and limitations.
^[28] Not compatible with all devices.
^[29] Requires LT Convenience Package.
^[30] Requires available Premium Audio and Sport Wheels Package.
^[31] Requires available Premium Seating Package on PEG 1LT and 2LT.
^[32] Requires available LTZ Comfort and Convenience Package.
^[33] Requires available Advanced Safety Package.

[†] All-season tires may not satisfy winter tire requirements in all regions of the country. Tires specifically designed for severe winter conditions and marked with the "winter tire" symbol 🌨️ may be required during certain months or in certain regions. Contact your Provincial, Municipal or local road authority for information regarding which tires are required in your particular area.

INTERIOR FABRICS



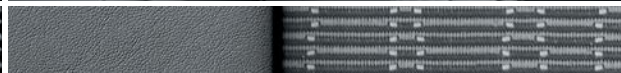
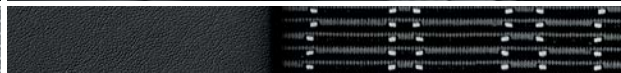
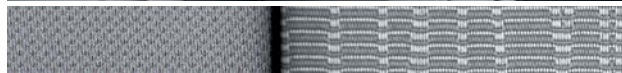
Jet Black/Dark Titanium-Colour Premium Cloth¹



Jet Black Premium Cloth with Leatherette Accents²



Jet Black/Dark Titanium-Colour Premium Cloth with Leatherette Accents²



Jet Black Sueded Microfibre Appointments³



Jet Black/Dark Titanium-Colour Sueded Microfibre Appointments³



Jet Black/Brownstone Sueded Microfibre Appointments³



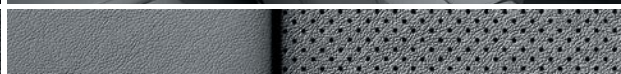
Jet Black Leather Appointments⁴



Jet Black/Dark Titanium-Colour Leather Appointments⁴



Jet Black/Mojave Leather Appointments⁴



¹ Standard on LS. ² Standard on LT. ³ Available on LT, requires available Premium Seating Package. ⁴ Standard on LTZ. ⁵ Available at extra cost. ⁶ Not available on LS. ⁷ Not available with Jet Black/Mojave interior. ⁸ Not available on LTZ. ⁹ Not available with Jet Black/Brownstone interior.

EXTERIOR COLOURS



G1M - BLUE VELVET METALLIC



G1W - IRIDESCENT PEARL TRICOAT^{5,6}



G7P - RED ROCK METALLIC^{6,7}



GAN - SILVER ICE METALLIC⁷



GAZ - SUMMIT WHITE⁸



GBA - BLACK



GBE - CRYSTAL RED TINTCOAT^{5,6,7}



GLJ - ASHEN GREY METALLIC⁹



GWS - SILVER TOPAZ METALLIC



GWT - CHAMPAGNE SILVER METALLIC

WHEELS



18" Steel with Fascia-Spoke Wheel Cover (Standard on LS)



18" Painted-Aluminum (Standard on LT)



19" Painted-Aluminum (Available on 1LT and 2LT)



19" Machined-Face Aluminum (Standard on LTZ)



20" Aluminum (Available on LTZ)

DEALER-INSTALLED ACCESSORIES

PERSONALIZE YOUR IMPALA AT GMACCESSORIES.CA



All-Weather Floor Mats



Body-Coloured Grille Surround



Cargo Mat



Chrome Mirror Caps



Remote Start