



TRVERSE 2015

CHEVROLET 



FIND **NEW** ROADS™



facebook.com/chevroletcanada



twitter.com/chevroletcanada



youtube.com/chevroletcanada

CHEVROLET.CA



Traverse LTZ AWD in Tungsten Metallic with available features.

**THE 2015 TRAVERSE:
FIND YOUR SPACE.**

With a boldly styled exterior designed around a rich and refined interior, Chevrolet Traverse leads the way. Traverse offers seating for up to eight,¹ best-in-class maximum cargo space,² award-winning safety technology and upscale details that make every ride feel like a vacation. No wonder Edmunds.com named Traverse a 2014 "Most Popular Large Crossover SUV" and the 2014 Traverse a "Top-Rated Vehicle" in its class.

FIND NEW ROADS™

¹ Standard on LS and 1LT. Available on 2LT. LTZ shown seats seven. ² Based on WardsAuto.com 2014 Large Cross/Utility Vehicle segment and latest competitive information at time of printing. Excludes other GM models.

EXTERIOR DESIGN

NAMED "A BEST FAMILY CAR OF 2014."

— KELLEY BLUE BOOK'S KBB.COM¹



Traverse LTZ AWD in Tungsten Metallic with available features.



REFINED IN EVERY DETAIL. With a confidence that flows from every line and a presence that stands alone, Traverse makes a lasting impression.

STYLE THAT STANDS OUT.

1. LTZ styling details include 20-in. aluminum wheels, dual-outlet exhaust with polished tips and chrome-accented bodyside mouldings.
2. Traverse LTZ features power-folding mirrors with turn signal indicators.
3. Inset clear-lens tail lamp elements add to the expressive style.

¹ For more information, visit www.kbb.com. Kelley Blue Book is a registered trademark of Kelley Blue Book Co., Inc.

INTERIOR DESIGN

**WHEN IT COMES TO SPACE,
TRAVERSE OVERACHIEVES.**



Traverse LTZ AWD in Tungsten Metallic
with Ebony/Saddle Up interior
and available features.



Traverse LTZ interior in Ebony/Saddle Up with available features.



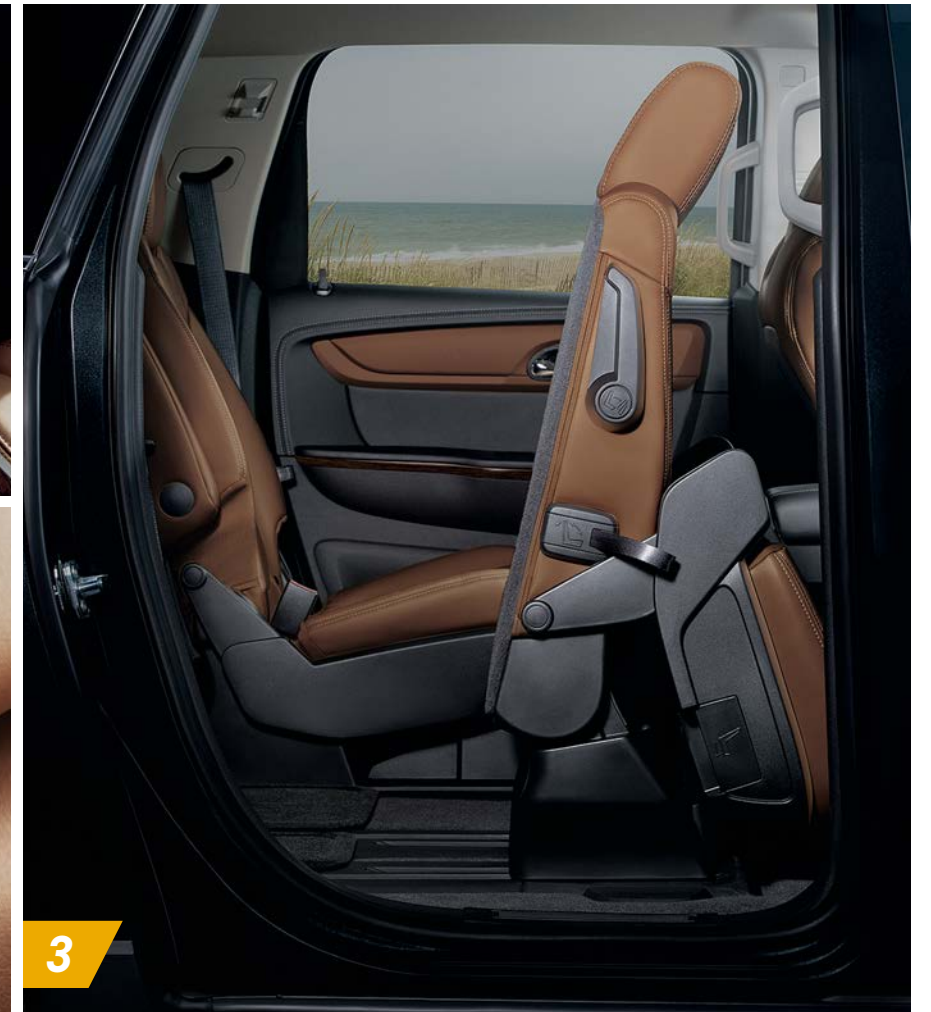
Traverse LTZ AWD in Tungsten Metallic with available features.

AVAILABLE POWER-REMOTE LIFTGATE. With a simple push of a button, the power-remote liftgate makes loading and unloading smooth and easy.

BEST-IN-CLASS CARGO. When it comes to space, Traverse overachieves. With 3294 L (116.3 cu. ft.) of maximum cargo space¹ and 691 L (24.4 cu. ft.) behind the third row,¹ Traverse is best-in-class²

AVAILABLE REAR PARK ASSIST. As you travel in reverse at speeds less than 8 km/h (5 mph), rear park assist uses sensors in the rear bumper to detect and alert you to stationary objects up to 2.4 m (8 ft.) behind your Traverse and to people walking past.

¹ Cargo and load capacity limited by weight and distribution.
² Based on WardsAuto.com 2014 Large Cross/Utility Vehicle segment and latest competitive information at time of printing. Excludes other GM models.



RICHLY APPOINTED AND THOROUGHLY PRACTICAL.

- 1. LTZ amenities include heated and cooled front bucket seats, tri-zone automatic climate controls and dual front cupholders.*
- 2. Supple soft touch surfaces and tailored appointments surround you.*
- 3. Ingenious Smart Slide® second-row seating allows easy access to the third row.*



1

CONFIDENT, CONNECTED, COVERED. THAT'S TRAVERSE TECHNOLOGY.

1. The rear vision camera uses the 165 mm (6.5-in.) diagonal colour touch-screen display to show the area behind your Traverse when backing up.
2. Download the OnStar RemoteLink^{®1} and myChevrolet² mobile apps to remotely connect to your Traverse.
3. Three USB ports³ provide the capability to power or connect with compatible devices like a smartphone or MP3 player.



2



3

¹ Available on select Apple, Android, BlackBerry and Windows devices. Requires an active OnStar service plan. Services vary by device, vehicle, conditions and the type of service plan you have. Please visit onstar.ca/mobile for vehicle availability, system limitations and further details. ² Requires Apple or Android platform. ³ Not compatible with all devices. ⁴ Full functionality requires compatible Bluetooth and smartphone, and USB connectivity for some devices. MyLink on Traverse does not include Gracenote functionality. Visit MyLink.Chevrolet.ca for more details.

STAY CONNECTED. With available Chevrolet MyLink⁴, you can handle calls, play music and access contacts from your compatible smartphone simply by touching the 165 mm (6.5-in.) diagonal colour touch-screen or through voice commands. Bluetooth[®] wireless technology and steering wheel controls let you make, answer and end phone calls without ever taking your hands off the wheel. You can also stream audio from online sources like Stitcher SmartRadio.⁵

SIRI[®] EYES FREE.⁶ Keep your hands on the wheel and your eyes on the road while you access your compatible iPhone.[®] Just connect your iPhone to your available Chevrolet MyLink⁴ Radio using Bluetooth wireless technology.

TRAVEL CONFIDENTLY. Get directions with OnStar^{®7} Turn-by-Turn Navigation (standard for the first six months). Or go for the available Chevrolet MyLink⁴ with Navigation, which offers full GPS navigation features plus 2-D/3-D maps, points of interest, and SiriusXM NavTraffic^{™8} and Local Forecast Weather with a 3-month trial subscription.

⁵ Data plan rates apply. ⁶ Requires available Chevrolet MyLink and compatible iPhone running iOS 6 or later. ⁷ Visit onstar.ca for coverage maps, details and system limitations. Services vary by model and conditions. OnStar acts as a link to existing emergency service providers. After the trial period (if applicable), an active OnStar service plan is required. ⁸ Available in 10 Canadian provinces and the 48 contiguous United States. Subscription sold separately after trial period. If you decide to continue your service at the end of your trial subscription, the plan you choose will automatically renew and bill at then-current rates until you call 1-877-209-0079 to cancel. Other fees and taxes will apply. All fees and programming subject to change. See SiriusXM "Terms & Conditions" and complete details at siriusxm.ca.





“★★★★★”
**OVERALL VEHICLE
 SCORE FOR SAFETY.**

— U.S. NATIONAL HIGHWAY TRAFFIC SAFETY ADMINISTRATION¹

REAR CROSS TRAFFIC ALERT. Using the same radar sensors as the Side Blind Zone Alert² system, this available feature alerts you to crossing traffic behind your Traverse when backing up. Audible alerts, as well as visual alerts on the rear vision camera screen, are triggered if approaching vehicles are detected.

REAR VISION CAMERA. When travelling in reverse at low speeds, the rear vision camera provides a real-time picture of the area immediately behind your Traverse on the 165 mm (6.5-in.) diagonal colour touch-screen display.

LANE DEPARTURE WARNING. This available camera-based system sends an alert if you unintentionally drift out of your lane (without starting the turn signal). The camera, mounted near the interior rear-view mirror, reads traffic lane markings when identifiable and provides audible and visual alerts.

SIDE BLIND ZONE ALERT.² This available feature uses radar sensors on both sides of the vehicle to help “look” for other vehicles in your side mirror blind zones and indicates their presence with LED-lit symbols in the exterior mirrors.

STABILITRAK[®] ELECTRONIC STABILITY CONTROL SYSTEM. This innovative safety technology is designed to improve vehicle stability on most road surfaces, especially during emergency manoeuvres and difficult driving conditions.

FRONT CENTRE SIDE-IMPACT AIRBAG. The available industry-first front centre airbag³ deploys from the right side of the driver seat and positions itself between the front seats for added cushioning and restraint to help protect the driver and passenger from colliding with one another in the event of a side-impact collision.

ONSTAR⁴ AUTOMATIC CRASH RESPONSE⁵ In a crash, built-in sensors can alert a specially trained OnStar Advisor who connects to your vehicle to see if you need help sent to your exact location — even if you can’t ask for it. You’re backed by a powerful network that will help get you the assistance you need.

FORWARD COLLISION ALERT. This available safety feature identifies vehicles ahead and alerts the driver to any potential front-end crash risks, helping provide time to stop and/or change course.

¹ U.S. Government 5-Star Safety Ratings are part of the National Highway Traffic Safety Administration’s (NHTSA’s) New Car Assessment Program (www.SaferCar.gov). ² Before making a lane change, always check the Side Blind Zone Alert display, check the exterior and interior rear-view mirrors, look over your shoulder for vehicles and hazards and start the turn signal. ³ Airbag inflation can cause severe injury or death to anyone too close to the airbag when it deploys. Be sure every occupant is properly restrained. Always use safety belts and the correct restraint for your child’s age and size. Even in vehicles equipped with the Passenger Sensing System, children are safer when properly secured in a rear seat in the appropriate infant, child or booster seat. Never place a rear-facing infant restraint in the front seat of any vehicle equipped with a passenger airbag. See the Owner’s Manual and the child safety seat instructions for more safety information. ⁴ Visit onstar.ca for coverage maps, details and system limitations. Services vary by model and conditions. OnStar acts as a link to existing emergency service providers. After the trial period (if applicable), an active OnStar service plan is required. ⁵ OnStar acts as a link to existing emergency service providers. Not all vehicles can transmit all crash data.

PERFORMANCE



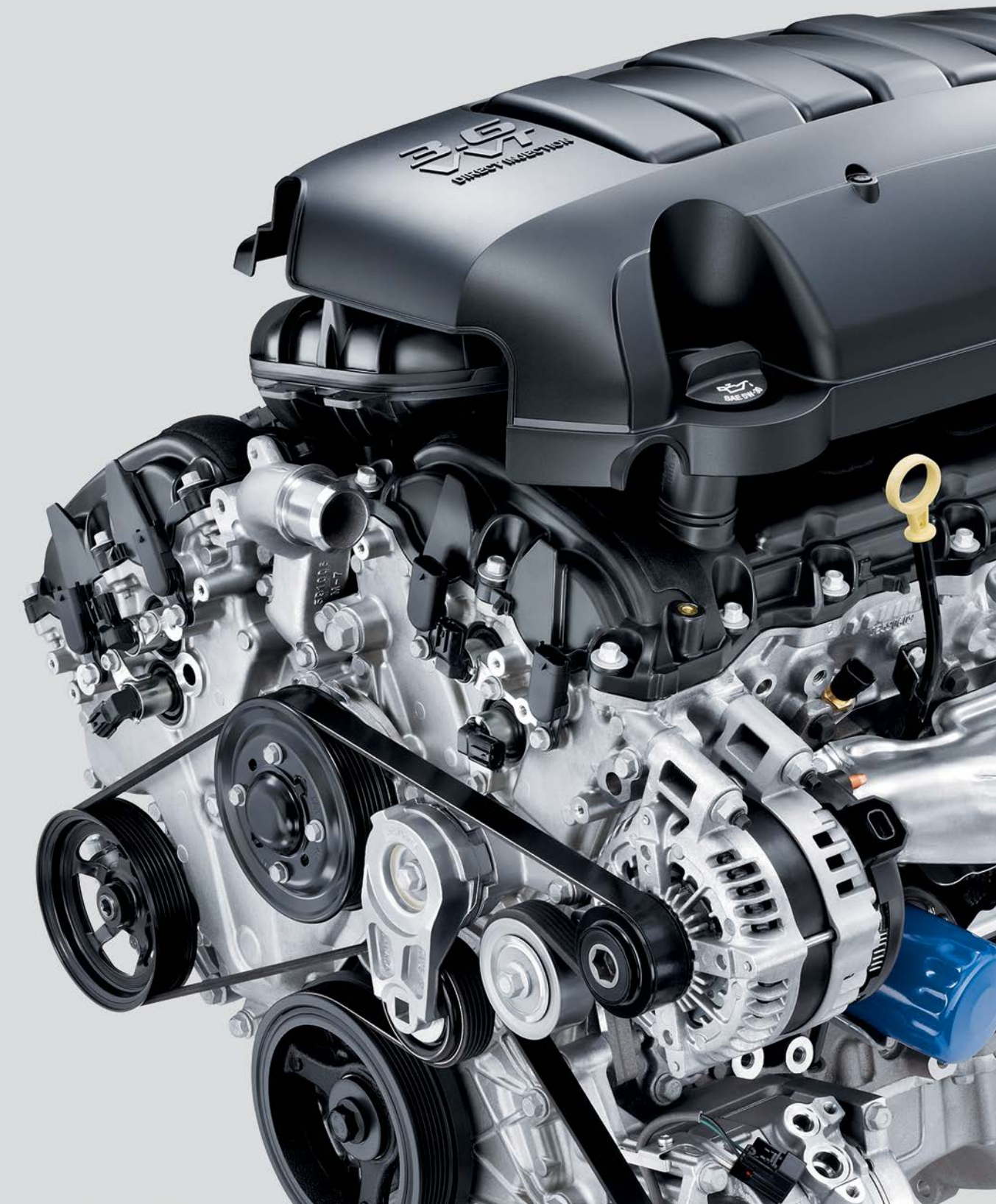
Traverse LTZ AWD in Siren Red Tintcoat (extra-cost colour) with available features.

ENJOY THE POWER OF EFFICIENCY.

REVVED UP. With more horsepower, torque and towing capability¹ than Honda Pilot or Toyota Highlander, Traverse lets you make the most out of every journey – and enjoy every minute of it. The catalyst is a spirited direct-injected 3.6L V6 engine that offers a winning combination of a highway fuel consumption rating of 9.9 L/100 km² and 281 horsepower.³

REFINED RIDE. This acclaimed performance is paired with a tuned 4-wheel independent suspension for confident response and an ultra-smooth ride. Available all-wheel drive helps maintain sure traction in all types of weather and road conditions.

¹ With available Trailer Towing Package. Before you buy a vehicle or use it for trailering, carefully review the Trailering section of the Owner's Manual. The weight of passengers, cargo and optional accessories may reduce the amount you can tow. ² 2015 Traverse FWD fuel consumption estimates based on GM preliminary testing in accordance with new 2015 Model Year Government of Canada approved test methods. Refer to vehicles.nrcan.gc.ca for details. Your actual fuel consumption may vary. ³ Traverse LTZ has 288 horsepower.





CHEVROLET COMPLETE CARE We're with you all the way. Chevrolet Complete Care reflects our commitment to you and your new Traverse.

Please visit chevrolet.ca or see your dealer for full details.

- 2-year/40,000 km¹ Complimentary Oil Changes²
- 3-year/60,000 km¹ New Vehicle Limited Warranty
- 5-year/160,000 km¹ Powertrain Component Limited Warranty, with \$0 deductible on repairs and the warranty is fully transferable at no charge
- 5-year/160,000 km¹ Courtesy Transportation
- 5-year/160,000 km¹ 24/7 Roadside Assistance
- 6-year/160,000 km¹ rust-through perforation coverage
- 8-year/130,000 km¹ coverage on catalytic converters and Powertrain Control Modules (PCMs)

- OnStar with the Directions & Connections Plan for 6 months³
- OnStar Basic Plan⁴ for 5 years on most Chevrolet vehicles – includes RemoteLink Key Fob Services to remotely start and lock/unlock your vehicle and activate your horn and lights from anywhere. Plus, get OnStar Vehicle Diagnostics⁵ and Dealer Maintenance Notification to make service scheduling simple. For Emergency and Advisor-based services, check out our additional available plans.

OTHER OWNERSHIP PRIVILEGES AND PROGRAMS⁶

- GM Protection Plan (GMPP) – the only extended service plan backed by the resources and commitment of General Motors, GMPP may be purchased at the time of sale or subsequently during the New Vehicle Limited Warranty period.
- Chevrolet Certified Service – to help your Chevrolet vehicle live up to its performance promise, Chevrolet Certified Service – found exclusively at your Chevrolet dealer – is there. With all the engineering excellence in your vehicle, GM-trained technicians have the expertise to care for all of it.
- Chevrolet Owner Centre – as an owner, take advantage of the Chevrolet Owner Centre. This online owner's destination gives you access to contests, current offers and the latest driving and maintenance tips. Find out more at chevroletowner.ca.

years at different times. Certain vehicle features may lose their usefulness over time due to obsolescence from technological changes. Unless otherwise noted, all claims based on the latest available competitive information. Excludes other GM vehicles.

ENGINES Chevrolet products are equipped with engines produced by GM Powertrain or other suppliers to GM worldwide. The engines in Chevrolet products may also be used in other GM makes and models.

ASSEMBLY Chevrolet vehicles and their components are assembled or produced by different operating units of General Motors, its subsidiaries or suppliers to GM worldwide. We sometimes find it necessary to produce Chevrolet vehicles with different or differently sourced components than originally scheduled. Since some options may be unavailable when your vehicle is assembled, we suggest you verify that your vehicle includes the equipment you ordered and that, if there were changes, they are acceptable to you.

FLEET ORDERS Some standard content may be deleted on fleet orders. See dealer for details.

AN IMPORTANT NOTE ABOUT ALTERATIONS AND WARRANTIES Installations or alterations to the original equipment vehicle (or chassis) as distributed by General Motors are not covered by the General Motors New Vehicle Limited Warranty. The special body company, assembler, equipment installer or upfitter is solely responsible for warranties on the body or equipment and any alterations (or any effect of the alterations) to any of the parts, components, systems or assemblies installed by GM. General Motors is not responsible for the safety or quality of design features, materials or workmanship of any alterations by such suppliers.

TRADEMARKS The marks appearing in this brochure including, but not limited to, General Motors, GM, Chevrolet, the Chevrolet emblem, Traverse and their respective logos, emblems, slogans and vehicle model names and body designs; and other marks such as Find New Roads, MyLink, Smart Slide and StabiliTrak are trademarks of General Motors LLC and/or General Motors of Canada Limited, its subsidiaries, affiliates or licensors. ©Copyright 2014 General Motors of Canada Limited. All rights reserved. OnStar, the OnStar emblem and OnStar RemoteLink are registered trademarks of OnStar, LLC. Apple, iPhone and Siri are trademarks of Apple Inc., registered in the U.S. and other countries. BlackBerry is a registered trademark of BlackBerry Limited. Bluetooth is a registered trademark of Bluetooth SIG, Inc. Bose is a registered trademark of the Bose Corporation. Facebook is a registered trademark of Facebook Inc. Gracenote is a registered trademark of Gracenote, Inc. SiriusXM, the SiriusXM logo, channel names and logos are trademarks of SiriusXM Radio Inc. Stitcher and Stitcher SmartRadio are registered trademarks of Stitcher SmartRadio, Inc. TheftLock is a registered trademark of Delphi Technologies, Inc. Twitter is a trademark of Twitter, Inc. YouTube is a registered trademark and Android and Google Play are trademarks of Google Inc.

COPYRIGHT ©Copyright 2014 General Motors of Canada Limited. All rights reserved. All text, images, graphics, and other materials in this brochure are subject to the copyright and other intellectual property rights of General Motors LLC and/or General Motors of Canada Limited. These materials may not be reproduced, distributed or modified without the express written permission of General Motors LLC and/or General Motors of Canada Limited.

Printed in Canada, August 2014

SELECT VEHICLE FEATURES

TRAVERSE LS Traverse LS includes these standard features:

281 hp 3.6L DOHC V6 engine with Direct Injection and Variable Valve Timing (VVT)

Oil life monitoring system

6-speed automatic transmission

4-wheel disc brakes with ABS, Panic Brake Assist and Hill Start Assist

StabiliTrak Electronic Stability Control System with Proactive Roll Avoidance

Traction control

4-wheel independent suspension

17-in. steel wheels with painted wheel covers

Battery run-down protection system

Power exterior mirrors, manual-folding, black

Roof rail mouldings

Rear spoiler

Rear window wiper and washer

Rear vision camera

Remote keyless entry system

Content theft alarm

6 airbags

Driver Information Centre with compass

Tire pressure monitoring system

Single-zone air conditioning with manual front climate controls and rear-seat manual controls

Power windows and programmable door locks

Tilt and telescopic adjustable steering column

Cruise control

Steering wheel-mounted Bluetooth® cruise and audio system controls

Acoustic Insulation Package

Seating for eight with front bucket seats, 2nd-row Smart Slide flat-folding 60/40 split-bench seat and 3rd-row flat-folding 60/40 split-bench seat

Premium cloth seating surfaces

Manual 4-way driver-seat adjuster and manual lumbar adjuster

Rear cargo underfloor storage system

AM/FM stereo, CD player, auxiliary audio input jack and 165 mm (6.5-in.) colour touch-screen display

TRAVERSE LS (CONTINUED)

6-speaker audio system

SiriusXM Satellite Radio™¹

USB port² in upper instrument panel and two charge-only USB ports in rear of centre console

Bluetooth hands-free phone connectivity

OnStar³ with 6 months of the Directions & Connections Plan featuring Turn-by-Turn Navigation and OnStar RemoteLink⁴

TRAVERSE 1LT Traverse 1LT enhances LS features with:

18-in. machined-aluminum wheels

Fog lamps

Heated, power exterior mirrors, manual-folding, body-colour with integrated turn signals

Rear park assist

Remote vehicle starter system

7 airbags (front centre side-impact airbag)

Leather-wrapped steering wheel

Power 8-way driver-seat adjuster with power lumbar adjuster

Heated front bucket seats

Simulated woodgrain on centre stack and interior trim.

TRAVERSE 2LT Traverse 2LT enhances 1LT features with:

Power rear liftgate

Tri-zone automatic climate controls

Auto-dimming exterior and interior rear-view mirrors

Seating for seven with 2nd-row Smart Slide captain's chairs

Chevrolet MyLink Radio infotainment system with 165 mm (6.5-in.) colour touch-screen display

10-speaker premium Bose® audio system

Bluetooth wireless audio streaming

Rear-seat audio controls and headphone jacks

Universal home remote, 3-channel programmable transmitter.

TRAVERSE LTZ Traverse LTZ enhances 2LT features with:

288 hp 3.6L DOHC V6 engine with Direct Injection and Variable Valve Timing (VVT)

All-wheel drive

Variable-effort power steering

Dual-outlet exhaust with bright tips

20-in. aluminum wheels

Forward Collision Alert

Lane Departure Warning

Side Blind Zone Alert⁶

Rear Cross Traffic Alert

Heated, power exterior mirrors, power-folding with integrated turn signals and memory feature

Perforated leather-appointed seating in first and second rows

Heated and cooled front bucket seats

Driver-side 2-position memory

Power 8-way front passenger-seat adjuster with power lumbar adjuster

Heated steering wheel

Power windows with driver express-up/-down feature, passenger express-down feature

Simulated woodgrain door trim

Chevrolet MyLink Radio with Navigation including 165 mm (6.5-in.) colour touch-screen display and SiriusXM NavTraffic!¹

¹ Whichever comes first. Additional conditions and limitations apply. See dealer for details. ² Limit of four complimentary Lube-Oil-Filter services in total. Fluid top-offs, inspections, tire rotations, wheel alignments and balancing, etc., are not covered.

³ Visit onstar.ca for coverage maps, details and system limitations. Services vary by model and conditions. OnStar acts as a link to existing emergency service providers. After the trial period (if applicable), an active OnStar service plan is required. ⁴ The OnStar Basic Plan is available for 5 years from the date of vehicle delivery of the eligible new 2015 Model Year vehicle and is transferable. It includes Vehicle Diagnostics (capabilities vary by model), Dealer Maintenance Notification and access to RemoteLink Key Fob Services (available on select Apple, Android, BlackBerry and Windows devices). Please visit onstar.ca/mobile for more details. The OnStar Basic Plan does not include Emergency Services, Automatic Crash Response, Stolen Vehicle Assistance, live Advisor service, or Hands-Free Calling. These and other services are available under a paid plan. See OnStar User Terms and Privacy Statement (including software terms) for more details. If you sell your vehicle or wish to cancel use of Basic Plan services, you must contact OnStar at 1.888.4.ONSTAR (1.888.466.7827). ⁵ Capabilities vary by model. Visit onstar.ca for details and system limitations. ⁶ Conditions and limitations apply. ⁷ Subject to eligibility. ⁸ Program subject to change.

¹ Available in 10 Canadian provinces and the 48 contiguous United States. Subscription sold separately after trial period. If you decide to continue your service at the end of your trial subscription, the plan you choose will automatically renew and bill at then-current rates until you call 1-877-209-0079 to cancel. Other fees and taxes will apply. All fees and programming subject to change. See SiriusXM "Terms & Conditions" and complete details at siriusxm.ca. ² Not compatible with all devices.

³ Visit onstar.ca for coverage maps, details and system limitations. Services vary by model and conditions. OnStar acts as a link to existing emergency service providers. After the trial period (if applicable), an active OnStar service plan is required. ⁴ Available on select Apple, Android, BlackBerry and Windows devices. Requires an active OnStar service plan. Services vary by device, vehicle, conditions and the type of service plan you have. Please visit onstar.ca/mobile for vehicle availability, system limitations and further details. ⁵ Full functionality requires compatible Bluetooth and smartphone, and USB connectivity for some devices. MyLink on Traverse does not include Gracenote functionality. Visit MyLink.Chevrolet.ca for more details. ⁶ Before making a lane change, always check the Side Blind Zone Alert display, check the exterior and interior rear-view mirrors, look over your shoulder for vehicles and hazards and start the turn signal.

DIMENSIONS



1792 mm
(70.6 in.)

1709 mm (67.3 in.)
1994 mm (78.5 in.)

1704 mm (67.1 in.)



3020 mm (118.9 in.)
5174 mm (203.7 in.)

INTERIOR, MM (IN.) FRONT/REAR

Headroom	1026/1001/960 (40.4/39.4/37.8)
Legroom	1049/935/843 (41.3/36.8/33.2)
Shoulder Room	1562/1549/1463 (61.5/61.0/57.6)
Hip Room	1473/1468/1227 (58.0/57.8/48.3)

CAPACITIES

Cargo Area, L (cu. ft.)	
– Behind 3rd-row Seats	691 (24.4)
– 3rd-row Seats Folded	1991 (70.3)
– 2nd- and 3rd-row Seats Folded	3294 (116.3)

Fuel Tank, L (imp. gal.)	83 (18.3)
--------------------------	-----------

CURB WEIGHT, KG (LB.)

– LS FWD	2108 (4647)
– LS AWD	2196 (4841)

SPECIFICATIONS

	LS	1LT	2LT	LTZ
SAFETY AND SECURITY				
Airbags				
– driver and front passenger, dual-stage, frontal with Passenger Sensing System and airbag suppression	●	●	●	●
– driver and front passenger, seat-mounted side-impact	●	●	●	●
– front-to-rear, outboard seating positions, head curtain side-impact	●	●	●	●
– driver inboard, seat-mounted side-impact	○ ¹	●	●	●
Door locks – rear doors, child-security	●	●	●	●
Forward Collision Alert	–	–	–	●
Lane Departure Warning	–	–	–	●
OnStar ² In-Vehicle Communications and Assistance Service – includes 6 months of the Directions & Connections Plan with Turn-by-Turn Navigation and OnStar RemoteLink ³	●	●	●	●
Rear Cross Traffic Alert	–	–	–	●
Safety restraints				
– 3-point belts for all seating positions, front safety belt pre-tensioners, dual-mode retractors and shoulder belt height adjusters	●	●	●	●
– LATCH (Lower Anchors and Top tethers for Children), rear seats	●	●	●	●
Security system – content theft alarm, audible/visible, programmable	●	●	●	●
Side Blind Zone Alert ⁴	–	–	–	●
StabiliTrak – Electronic Stability Control System with Proactive Roll Avoidance	●	●	●	●
Theft-deterrent system – electronic immobilizer	●	●	●	●
Traction control – electronic, full-function, all-speed	●	●	●	●
MECHANICAL				
Battery – maintenance-free with run-down protection	●	●	●	●
Brakes				
– power, 4-wheel disc	●	●	●	●
– 4-wheel Anti-lock Braking System (ABS) with Panic Brake Assist and Hill Start Assist	●	●	●	●
Drive				
– front-wheel (FWD)	●	●	●	–
– full-time, active electronic all-wheel (AWD)	○	○	○	●
Engine				
– 3.6L DOHC V6 with VVT and Direct Injection				
Horsepower with single exhaust – 281 @ 6300 rpm;				
Torque – 266 lb.-ft. @ 3400 rpm	●	●	●	–
– 3.6L DOHC V6 with VVT and Direct Injection				
Horsepower with dual exhaust – 288 @ 6300 rpm;				
Torque – 270 lb.-ft. @ 3400 rpm	–	–	–	●
Engine block heater	○	○	○	○
Exhaust system				
– aluminized stainless steel, single-outlet	●	●	●	–
– aluminized stainless steel, dual-outlet with bright tips	–	–	–	●

● STANDARD ○ AVAILABLE – NOT AVAILABLE

	LS	1LT	2LT	LTZ
MECHANICAL (CONTINUED)				
Steering				
– power, rack-and-pinion	●	●	●	–
– power, rack-and-pinion, variable-effort	–	○ ⁵	–	●
Suspension – 4-wheel independent	●	●	●	●
Transmission – 6-speed automatic with overdrive	●	●	●	●
Vehicle starter system – remote	–	●	●	●
EXTERIOR				
Glass – solar-absorbing, tinted (deep-tinted on all windows behind front doors)	●	●	●	●
Liftgate				
– rear, manual	●	●	–	–
– rear, power	–	–	●	●
Lighting				
– daytime running lamps with exterior automatic lamp control	●	●	●	●
– halogen headlamps	●	●	●	●
– fog lamps	–	●	●	●
Mirrors				
– manual-folding, power remote control, black	●	–	–	–
– manual-folding, power remote control, heated with integrated turn signal indicators, body-colour	–	●	–	–
– manual-folding, power remote control, heated with integrated turn signal indicators, driver-side auto-dimming, body-colour	–	–	●	–
– power-folding, power remote control, heated with integrated turn signal indicators, driver-side auto-dimming with memory, body-colour	–	–	–	●
Mouldings				
– bodyside, argent	●	–	–	–
– bodyside, body-colour	–	●	●	–
– bodyside, body-colour with chrome accent	–	–	–	●
Park assist – rear, obstacle detection with audible warning	–	●	●	●
Rear vision camera	●	●	●	●
Roof rail mouldings – black	●	●	●	●
Spoiler – rear, body-colour	●	●	●	●
Sunroof – SkyScape, 2-panel, power front and fixed rear with sunscreen	–	○	○	○
Tires				
– P245/70R17 all-season [†]	●	–	–	–
– P255/65R18 all-season [†]	–	●	●	–
– P255/55R20 all-season [†]	–	○ ⁵	–	●
Wheels				
– 17" x 7.5" steel with painted wheel cover	●	–	–	–
– 18" x 7.5" machined-aluminum	–	●	●	–
– 20" x 7.5" aluminum with painted spokes	–	○ ⁵	–	–
– 20" x 7.5" aluminum	–	–	–	●
Windshield wipers				
– front, 2-speed with variable delay (intermittent)	●	●	●	●
– rear with variable delay (intermittent)	●	●	●	●

	LS	1LT	2LT	LTZ
INTERIOR				
Climate control				
– manual, single-zone front air conditioning	●	●	–	–
– automatic, tri-zone climate controls with individual settings for driver, front passenger and 2nd-/3rd-row controls for rear-seat passengers	–	○ ⁶	●	●
– rear, manual	●	●	●	●
Console – front floor with 2 cupholders, storage compartment and 12-volt accessory power outlet	●	●	●	●
Cruise control – electronic, steering wheel-mounted controls	●	●	●	●
Cupholders – 10 with 7-passenger seating/12 with 8-passenger seating	●	●	●	●
Defogger – electric rear-window	●	●	●	●
Floor mats – front, 2nd- and 3rd-row, carpeted	●	●	●	●
Instrumentation				
– analogue gauges (includes speedometer, tachometer, coolant temperature, voltmeter and fuel gauges)	●	●	●	●
– Driver Information Centre (includes compass, exterior temperature display, indicators for low coolant, low fuel and low oil, oil life monitoring system, tire pressure monitoring system, instantaneous and average fuel consumption, fuel range, driving time, average speed, vehicle programmable features and message centre)	●	●	●	●
Lighting – dome, delayed entry/exit, theatre dimming, reading lamps for front seats, 2nd-row reading lamps integrated into dome lamp, cargo area, door- and tailgate-activated switches and illuminated entry and exit feature	●	●	●	●
Locks				
– power, programmable with lock-out protection	●	●	●	●
– remote keyless entry system, programmable with panic feature	●	●	●	●
Mirror				
– rear-view, manual day/night	●	●	–	–
– rear-view, auto-dimming	–	–	●	●
Power outlets				
– 12-volt auxiliary on instrument panel, inside front console, on rear of front console and rear cargo area	●	●	●	●
– 115-volt AC household power outlet	–	○ ⁶	○ ⁷	○ ⁷
Retained accessory power	●	●	●	●

¹ Requires available power 8-way driver-seat adjuster. ² Visit onstar.ca for coverage maps, details and system limitations. Services vary by model and conditions. OnStar acts as a link to existing emergency service providers. After the trial period (if applicable), an active OnStar service plan is required. ³ Available on select Apple, Android, BlackBerry and Windows devices. Services vary by device, vehicle, conditions and the type of service plan you have. Please visit onstar.ca/mobile for vehicle availability, system limitations and further details. ⁴ Before making a lane change, always check the Side Blind Zone Alert display, check the exterior and interior rear-view mirrors, look over your shoulder for vehicles and hazards and start the turn signal. ⁵ Included with available True North Edition. ⁶ Included with available Traveller's Package. ⁷ Included with available Rear-Seat Entertainment System. ⁸ Leather-appointed seating surfaces on front and 2nd row only. 3rd row is vinyl-covered. ⁹ Includes power 8-way front passenger-seat adjuster. ¹⁰ Included with available leather-appointed seating surfaces. ¹¹ Full functionality requires compatible Bluetooth and smartphone, and USB connectivity for some devices. MyLink on Traverse does not include Gracenote functionality. Visit MyLink.Chevrolet.ca for more details. ¹² Data plan rates apply. ¹³ At time of printing, detailed map coverage is available for most major urban areas of the United States and for certain metropolitan areas of Canada (Vancouver, Calgary, Edmonton, Winnipeg, Windsor, London, Toronto, Ottawa, Montreal, Quebec City and Halifax). Coverage is significantly limited outside these areas. ¹⁴ Available in 10 Canadian provinces and the 48 contiguous United States. Subscription sold separately after trial period. If you decide to continue your service at the end of your trial subscription, the plan you choose will automatically renew and bill at then-current rates until you call 1-877-209-0079 to cancel. Other fees and taxes will apply. All fees and programming subject to change. See SiriusXM™ Terms & Conditions™ and complete details at siriusxm.ca. ¹⁵ Not compatible with all devices. † All-season tires may not satisfy winter tire requirements in all regions of the country. Tires specifically designed for severe winter conditions and marked with the "winter tire" symbol may be required during certain months or in certain regions. Contact your Provincial, Municipal or local road authority for information regarding which tires are required in your particular area.

	LS	1LT	2LT	LTZ
INTERIOR (CONTINUED)				
Steering column – tilt and telescopic adjustable	●	●	●	●
Steering wheel				
– with Bluetooth [®] cruise and audio system controls	●	●	●	●
– leather-wrapped	–	●	●	●
– heated	–	–	–	●
Sunshades – LH and RH padded, illuminated vanity mirrors with extensions	●	●	●	●
Trim				
– silver-painted, centre stack and interior trim	●	–	–	–
– simulated woodgrain, centre stack and interior trim	–	●	●	●
– simulated woodgrain, door trim	–	–	–	●
Universal home remote – 3-channel programmable transmitter	–	○ ⁵	●	●
Windows				
– power, driver express-down and rear-window lock-out features	●	●	●	–
– power, driver express-up/-down, passenger express-down and rear-window lock-out features	–	–	–	●
SEATS				
8-passenger seating – includes front bucket seats with 2nd-row Smart Slide flat-folding 60/40 split-bench seat and 3rd-row flat-folding 60/40 split-bench seat	●	●	○	–
7-passenger seating – includes front bucket seats with 2nd-row Smart Slide captain's chairs and 3rd-row flat-folding 60/40 split-bench seat	–	○	●	●
Premium cloth seating surfaces	●	●	●	–
Leather-appointed seating surfaces ⁸	–	–	○ ⁵	–
Perforated leather-appointed seating surfaces ⁸	–	–	–	●
Manual 4-way driver-seat adjuster and manual lumbar adjuster	●	–	–	–
Power 8-way driver-seat adjuster with power lumbar adjuster	○	●	●	●
Power 8-way front passenger-seat adjuster with power lumbar adjuster	–	–	○ ¹⁰	●
Heated front bucket seats	–	●	●	–
Heated and cooled front bucket seats	–	–	–	●
Memory Package – includes 2-position driver seat and exterior rear-view mirrors	–	–	–	●

	LS	1LT	2LT	LTZ
ENTERTAINMENT				
AM/FM stereo with CD player, MP3 playback, seek up/down, auxiliary audio input jack, TheftLock [®] and 165 mm (6.5-in.) diagonal colour touch-screen display	●	●	–	–
Chevrolet MyLink [™] Radio infotainment system – includes 165 mm (6.5-in.) diagonal colour touch-screen display, AM/FM stereo with CD player, MP3 playback, seek up/down, auxiliary audio input jack, TheftLock, digital clock, personal media connectivity by Bluetooth to vehicle audio system; voice-activated technology for audio, phone, phone book and music selection and Stitcher SmartRadio ^{®12} compatibility	–	○ ⁵	●	–
Chevrolet MyLink [™] Radio with Navigation ¹³ and SiriusXM NavTraffic ^{™14}	–	–	○	●
6-speaker audio system	●	●	–	–
10-speaker premium Bose [®] audio system	–	–	●	●
Bluetooth				
– hands-free phone connectivity	●	●	●	●
– wireless audio streaming	–	–	●	●
SiriusXM Satellite Radio ^{™14}	●	●	●	●
USB port ¹⁵ in upper instrument panel and 2 charge-only USB ports in rear of centre console	●	●	●	●
Rear-Seat Entertainment System – includes rear-seat DVD player, remote control, overhead display, 2 sets of 2-channel wireless infrared headphones, auxiliary audio/video input jacks, Bose 10-speaker 5.1 surround sound system and 115-volt AC household power outlet	–	○ ⁶	○	○
Rear-seat audio controls and headphone jacks	–	○ ⁶	●	●
AVAILABLE PACKAGES				
Trailer Towing Package – 2359 kg (5200 lb.) capacity, includes hitch receiver platform, 50 mm (2 in.) hitch receiver, 7-wire trailering wire harness with sealed connector and heavy-duty cooling	○	○	○	○
Traveller's Package – includes automatic tri-zone climate controls, Chevrolet MyLink [™] Radio, Rear-Seat Entertainment System and an additional 9 months of SiriusXM Satellite Radio	–	○	–	–
True North Edition – includes Chevrolet MyLink [™] Radio, universal home remote 3-channel programmable transmitter, P255/55R20 all-season tires; 20" x 7.5" aluminum wheels with painted spokes and variable-effort power steering	–	○	–	–

INTERIOR FABRICS



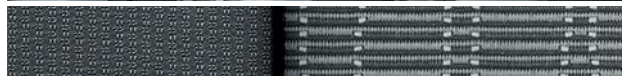
Dark Titanium-Colour/Light Titanium-Colour Premium Cloth^{1,2}



Ebony Premium Cloth²



Ebony/Saddle Up Premium Cloth²



Dark Titanium-Colour/Light Titanium-Colour Leather Appointments³



Ebony Leather Appointments³



Ebony/Saddle Up Leather Appointments^{3,4}



Dark Titanium-Colour/Light Titanium-Colour Perforated Leather Appointments⁵



Ebony Perforated Leather Appointments⁵



Ebony/Saddle Up Perforated Leather Appointments⁵



EXTERIOR COLOURS



17U – SILVER ICE METALLIC



40U – WHITE



58U – BLACK GRANITE METALLIC^{6,7}



98U – WHITE DIAMOND TRICOAT^{6,7}



61E – SIREN RED TINTCOAT^{6,7}



61M – BLUE VELVET METALLIC



67U – SABLE METALLIC^{6,7}



GWT – CHAMPAGNE SILVER METALLIC⁷



GXG – TUNGSTEN METALLIC

WHEELS



17" Steel with Painted Wheel Cover
(Standard on LS)



18" Machined-Aluminum
(Standard on 1LT and 2LT)



20" Aluminum with Painted Spokes
(Available on 1LT;
requires True North Edition)



20" Aluminum
(Standard on LTZ)

DEALER-INSTALLED ACCESSORIES

PERSONALIZE YOUR TRAVERSE AT GMACCESSORIES.CA



6" Chrome Oval Assist Steps



All-Weather Floor Mats



Dual DVD Rear-Seat Entertainment System



Front Door Illuminated Sill Plates



Roof Rack Cross Rail Package

¹ Standard on LS. ² Standard on 1LT and 2LT. ³ Available on 2LT. ⁴ Not available with 8-passenger seating. ⁵ Standard on LTZ. ⁶ Available at extra cost. ⁷ Not available on LS.